

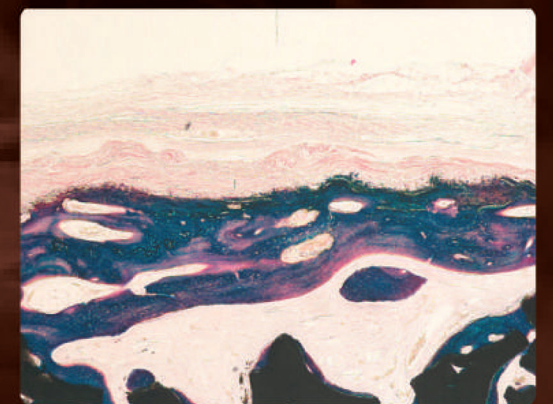
# Total Solution for Sinus Graft Surgery

# Collagen

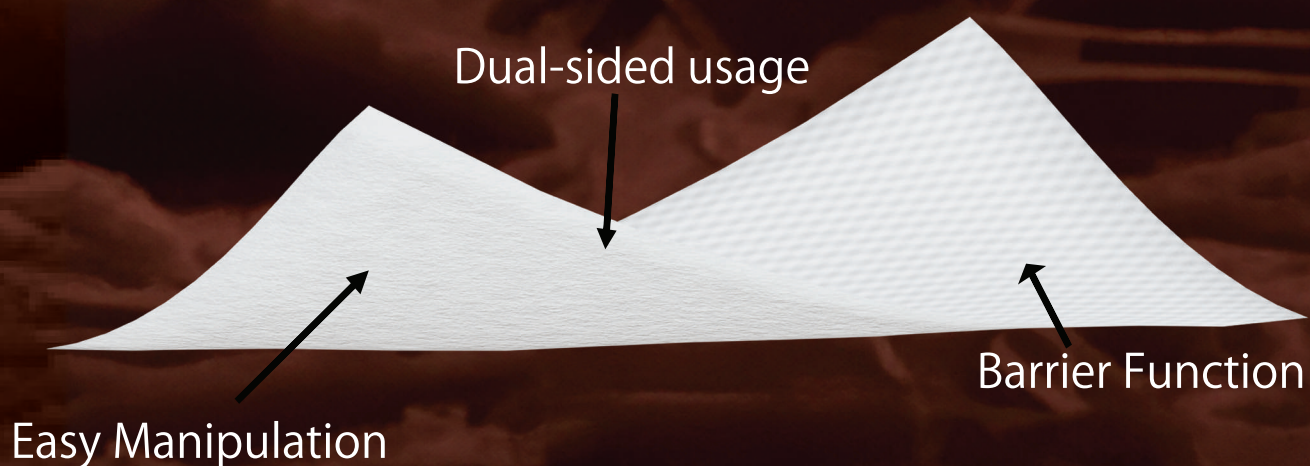
Membrane

- Crosslinking of highly pure type I collagen derived from bovine tendons sourced in New Zealand.
- Thin membrane (300 $\mu$ m) with multiple layers
- 6 months resorption period provides enough time for stabilizing graft materials and supporting bone to grow.
- Multiple-layered structure enables more effective bone regeneration by sparing enough space for hard tissue formation and facilitates proliferation of osteoblasts.
- Easy manipulation
- Dual-sided usage
- Size: 10x20, 15x20, 20x30, 30x40 (mm)
- Thickness: 0.3 mm

Rabbit Calvaria Model - 6-12 weeks



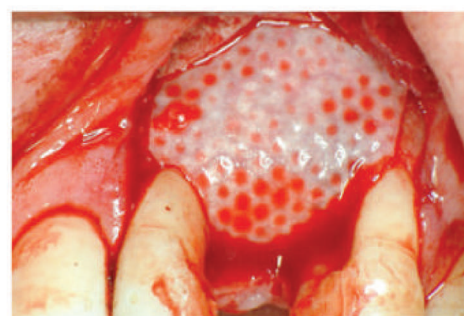
Biodegradable barrier membrane for guided bone / tissue regeneration



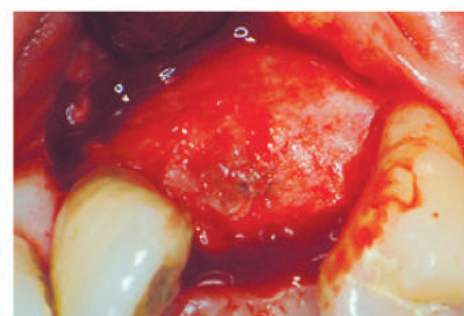
## • Clinical Evidence



Implantation



Collagen Membrane



4 months healing



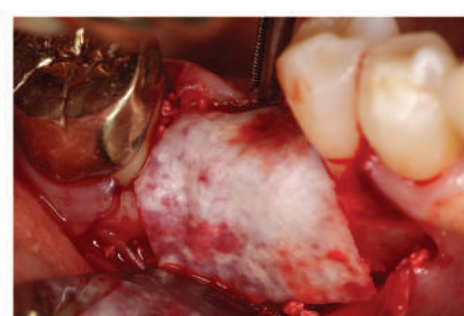
Final prosthesis



SuperLine 4510



OSTEON™II



Collagen Membrane



5 months healing



**DentiumUSA**  
Developed by Clinicians for Clinicians

6731 Katella Ave. Cypress, CA 90630  
Tel. 1-877-304-6752 Fax. 1-714-226-0019  
cs@dentiumusa.com



PN3041-1