

Maine Home

August 2014

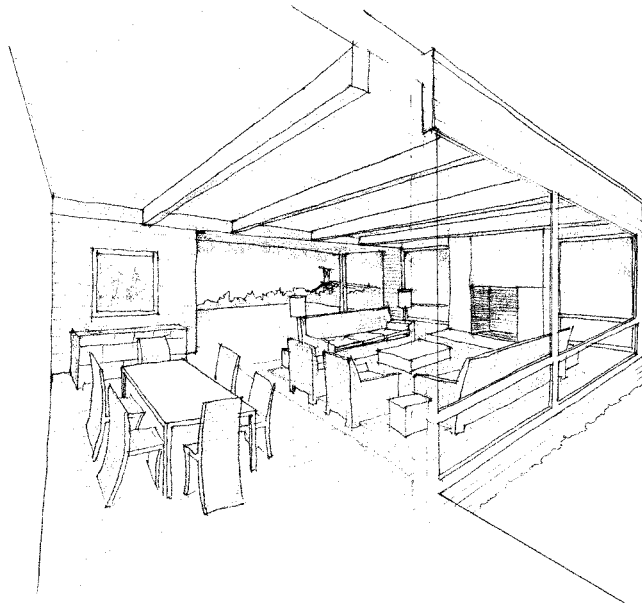
+ DESIGN

NATURAL BEAUTY

A stunning Southport estate, a lake house on the grounds of a former summer camp in Otisfield

+ A TINY FLOATING CABIN OFF VINALHAVEN

SIMPLICITY & FLEXIBILITY



This addition to a small camp on the coast of Maine features two volumes: a single-story glass pavilion that occupies most of the existing footprint and a two-story, bluestone-clad bedroom wing with a glass-enclosed stairway.

The bedroom/bathroom wing offers versatility in sleeping arrangements, and access at the second level to a roof deck set into a vegetated roof plane above the glass pavilion, providing unencumbered views in all directions. Both volumes have vegetated flat roof areas to present a natural overview from an existing house that dominates the site.

The bluestone cladding is also utilized at the fireplace and chimney. It is a material that is sympathetic to the exposed ledge and rocky shoreline. Other exterior materials include mahogany windows and doors, western red cedar flush-board siding, and red copper for flashing and roof edges.

The entry deck is marked with a large erratic a glacially deposited boulder at the edge of the bluestone walk. The solid entry door opens adjacent to a steel stair with wood treads and open risers that allow light to filter into the space. A 21 by 9-foot fully retracting door unites the living area with a porch that then opens to a deck beyond. Retracting screens on the porch provide protection from insects.

The emphasis is on simplicity, flexibility, and the notion that the site itself is the major determinant of form. **MH+D**

Location: Coastal Maine
Architect: Attardo Pondelis Architecture
Landscape Architect: Mohr & Seredin
Construction start: Fall 2014
Construction complete: TBD