

Advance

ANNIVERSARY EVENT



Look inside
FOR CELEBRATORY SAVINGS!

Why Advance?

73 YEARS OF SERVING OUR COMMUNITY, AND PROVIDING ALL YOUR ELECTRONICS NEEDS SINCE 1953.

We've seen and heard plenty of change over the years - vinyl to eight track to cassette to cd to... vinyl? From black-and-white televisions to today's stunning Smart TVs. From Mono to Stereo, from VHS to Blu-ray and beyond. It's been an incredible journey.

You know the old saying, 'The more things change, the more they stay the same?' At Advance, this rings true.

While some things have certainly evolved, others stand the test of time: impeccable customer service, unparalleled knowledge of the industry, and an outstanding shopping experience. Making philanthropy a priority, and continuing to honour the community we put down roots in.

Fantastic, talented staff. Innovation and adaptability. These are big parts of how we've reached this milestone. The most important part is you; our loyal customers who keep coming back, who tell their family and friends about us, who choose to support a home-grown business.

FROM ALL OF US AT ADVANCE, THANK YOU FOR BEING PART OF OUR STORY. WE WOULDN'T BE HERE WITHOUT YOU. HERE'S TO MANY MORE YEARS TOGETHER.

73
years!

Advance
LEADING EDGE. LOCAL. CANADIAN.

THANKS FOR SHOPPING LOCAL!

1300 Portage Ave | 204.786.6541 | advance.mb.ca

HOURS: MON - SAT 10AM - 6PM | SHOP ONLINE 24/7



Advance ANNIVERSARY EVENT



Why Advance?

Because shopping local doesn't cost you more - and let's face it; shopping local and supporting your community just feels good.

AT ADVANCE, WE PROMISE COMPETITIVE PRICING. IN FACT, WE'LL MATCH THE BIG-BOX STORES OR YOUR MONEY BACK!



SAMSUNG

Samsung 65" 4k Crystal UDH Smart TV

- CRYSTAL PROCESSOR 4K works to upscale all of your content to 4K picture quality.
- 4K HDR increases the range of light levels on your TV for stunning detail and an enormous spectrum of colours even in the darkest scenes.

65"

SAVE \$200

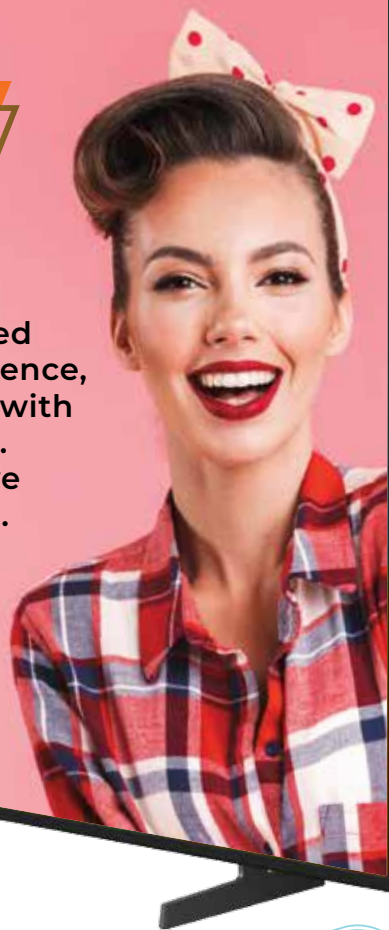
\$599

UN65U7900F

Why Advance?

With over 60 years of specialized delivery and installation experience, our team handles everything - with no subcontractors, and no fuss. With sleek, wire-free setups, we ensure every detail is just right.

THIS ISN'T JUST A SERVICE; IT'S PEACE OF MIND.



32"

Feature Value

Samsung 32" Smart LED HDTV

- PURCOLOUR produces a wide range of colours for a true-to-life experience.
- BUILT-IN WI-FI for streaming the hottest shows from Netflix and Disney.

\$229

UN32H5000

Samsung 4K QLED Smart TV

- REAL QUANTUM DOT DISPLAY delivers stunning picture quality. 100% Colour Volume takes light and turns it into breathtaking colours at even high levels of brightness.
- 120HZ NATIVE REFRESH RATE offers superior motion clarity, reducing blur for sports, eliminating motion judder in movies, and enabling smooth 120fps gaming on PS5 and Xbox Series X.



No Payments
AND NO INTEREST FOR 6 MONTHS!

55"

\$1099

QN55QN82F

UPGRADE TO MINI LED

SAVE \$300

65"

\$1499

QN65QN82F

SAVE \$400

85"

\$1999

QN85Q8F

Why Advance?

If you have a question or an issue, call us - we actually answer! Speak directly to your salesperson or even the General Manager.

OUR SUPPORT DOESN'T END WHEN YOU WALK OUT THE DOOR.



Samsung 48" S90F 4K OLED Smart TV

- OLED provides cutting-edge self-illuminating pixels, what you see is a picture that's pure, bright and more accurate than ever before.
- MOTION XCELERATOR provides ultra-smooth, tear-free, low-latency gameplay with real-time responsiveness for an immersive experience

48" **\$1499**

QN48S90F

SAVE \$500

65"

SAVE \$800

\$2199

QN65S90F

75"

SAVE \$1500

\$2999

QN77S90F

Samsung S90F 4K QD OLED Smart TV

- NQ4 AI GEN3 PROCESSOR enhances your picture and sound to superb heights. Enjoy the best 4K TV experience, whether you're streaming, playing video games or watching sports.
- OLED HDR+ analyzes each scene and boosts for improved brightness. The result is an incredibly bright screen with a deeper range of contrast, which makes even minor details stand out

Why Advance?

Our showroom lets you see, feel, and hear products before you buy, we've set it up to feel just like home. Compare different models side-by-side with personalized advice from our team of experts.

SKIP THE GUESSWORK OF ONLINE SHOPPING!



Advance
LEADING EDGE. LOCAL. CANADIAN.

THANKS FOR SHOPPING LOCAL!

1300 Portage Ave | 204.786.6541 | advance.mb.ca

HOURS: MON - SAT 10AM - 6PM | SHOP ONLINE 24/7

Advance

ANNIVERSARY EVENT

CELEBRATE WITH SAVINGS FROM SAMSUNG



SAMSUNG

55" **\$949**

UN55M80H

65" **\$1099**

UN65M80H

Save \$100



SAMSUNG | 
Official TV of Canada Soccer

NEW! Samsung M80H 4K Smart Mini LED TV

Experience deeper contrast that brings scenes to life. Mini LED technology uses smaller backlights than regular LEDs to control light with greater accuracy, revealing finer details and realistic depth for a clear, immersive picture.

20
YEARS
Global No.1 TV

NEW! Samsung S90H 4K Smart OLED TV

GLARE FREE WITH REAL BLACK & REAL COLOUR

Samsung OLED TVs deliver deeper blacks with VDE-certified Real Black and bring to life Real Color with Pantone validation, for an authentically immersive viewing experience.

55" **\$2199**

QN55S90H

Save \$100

65" **\$2899**

QN65S90H

Save \$100

77" **\$4199**

QN77S90H

Save \$300

New!



OLED

The **FRAME**

73
Years!



TV WHEN IT'S ON, ART WHEN IT'S OFF

The Frame matches your space as well as your style. When it's on, it's an amazing television. And when it's off, it's like a work of art.

- Frame-look Design
- Art Mode & Art Store
- 100% Colour Volume with Quantum Dot

65" **\$1499**

QN65LS03F

Save \$800

85" **\$3299**

PRO QN85LS03FW

Save \$2200

SEE THE WORLD IN QLED TECHNOLOGY

Experience our finest picture ever with one billion shades of pure colour at any brightness.



FRAME YOUR MOST-LOVED MOMENTS

You can easily upload and exhibit your own photography—or a new family portrait. Simply send your photos to The Frame via your phone or a USB flash drive.



BEAUTIFY YOUR SPACE WITH ART MODE

Experience the modern way to display your own personal art collection. The Frame matches your space as well as your style. When it's on, it's an amazing television. And when it's off, it's like a work of art.

Advance ANNIVERSARY EVENT



Why Advance?

With over 73 years in Winnipeg, we're not just a store; we're a community staple. Support a local business that actively gives back, all while enjoying the benefit of working with a dedicated team of familiar faces.

LOCAL, TRUSTED, AND COMMUNITY-ORIENTED



SONY

Sony BRAVIA 3 4K Google TV

OVER A BILLION COLOURS IN A BEAUTIFUL FLUSH DESIGN

Take colour to the next level on a 4K HDR TV that can reproduce the subtle differences of shade and hue. Real-world colours give you a smoother, clearer, more lifelike entertainment experience.

50" Save \$50 \$799 K50S30	55" Save \$50 \$899 K55S30
65" Save \$320 \$979 K65S30	75" Save \$100 \$1299 K75S30



No Payments AND NO INTEREST FOR 6 MONTHS!



Sony BRAVIA 5 Mini LED Google TV

PRECISE 4K PICTURE, AS PERCEIVED BY THE HUMAN EYE

Enjoy picture quality that feels deep, natural and real. The revolutionary XR Picture processor with Full Array LED panel creates ultra-realistic picture quality full of lifelike contrast.

55" Save \$400 \$1599 K55XR50
65" Save \$100 \$1999 K65XR50
75" Save \$400 \$2399 K75XR50
85" Save \$500 \$2999 K85XR50

Sony BRAVIA 8 OLED Google TV

PREMIUM OLED PICTURE WITH TRULY IMMERSIVE SOUND

See how we've maximized viewing realism with our OLED panel, powered by the revolutionary Cognitive Processor XR™ — it's sound and vision in perfect harmony.

55" Save \$300 \$2099 K55XR80
65" Save \$600 \$2399 K65XR80
77" Save \$1000 \$3499 K77XR80

Why Advance?

With over 73 years in Winnipeg, we're not just a store; we're a community staple. Support a local business that actively gives back, all while enjoying the benefit of working with a dedicated team of familiar faces.

LOCAL, TRUSTED, AND COMMUNITY-ORIENTED



Advance

ANNIVERSARY EVENT

SWEET SOUNDS, SWEET SAVINGS ON HOME AUDIO



HEADPHONES

Sennheiser Noise-Cancelling Wireless Headphones

\$149

ACCENTUM

Save \$100

Available in black or white.



Sony Noise-Cancelling True Wireless Earbuds

\$289

WF1000XM5

Save \$140

Available in black or silver.



Sony Noise-Cancelling Wireless Headphones

\$529

WH1000XM6

Save \$70

Available in black or silver.



Sennheiser Open-Back Hi-Fi Headphones

\$549

HD660S2

Save \$250



PORTABLE WIRELESS SPEAKERS



Save \$150

JBL Xtreme 4 Bluetooth Portable Speaker

\$299



Save \$200

Samsung MX-ST50 Bluetooth Portable Party Speaker

\$499



Save \$150

JBL Partybox Club 520 Bluetooth Portable Speaker

\$949



Sonos Roam 2 Wi-Fi and Bluetooth Portable Speaker

\$170

Save \$59



Sonos Move 2 Wi-Fi and Bluetooth Portable Speaker

\$519

Save \$130

SOUNDBARS



Sonos Bean Gen 2 Smart Soundbar

\$479

Save \$170



Sonos Arc Ultra Dolby Atmos Smart Soundbar

\$1189

Save \$260

Advance
LEADING EDGE. LOCAL. CANADIAN.

THANKS FOR SHOPPING LOCAL!

1300 Portage Ave | 204.786.6541 | advance.mb.ca

HOURS: MON - SAT 10AM - 6PM | SHOP ONLINE 24/7

Advance
ANNIVERSARY EVENT



Why Advance?

Our experienced staff are here to help you make the best choice, without the pressure, ensuring you leave with exactly what you need.

YOU'LL ALWAYS FIND KNOWLEDGEABLE, FRIENDLY STAFF.



WELCOME TO THE HI-FI ROOM

**LET'S BE HONEST,
THIS LEGEND
NEEDS NO
INTRODUCTION.**

12 MONTHS
NO PAYMENTS AND NO INTEREST ON HI-FI!

Founded in 1949, McIntosh is known for offering distinguished home audio systems that deliver the ultimate experience in music and film.

Offering products for two-channel stereo sound systems and multi-channel home theaters with surround sound, McIntosh continues to define the ultimate home audio entertainment experience for discriminating listeners around the world. Their iconic blue Watt output meter is globally recognized as a symbol of quality home audio. With a McIntosh home stereo system or home theater, listeners have the ability to create their own luxury audio experience – and truly live their music.



CALL 204-786-6541 OR VISIT: advance.mb.ca/hi-fi-room

the *hi-fi* room
Audio for Music Lovers

Bowers & Wilkins
The essential loudspeakers
for music lovers.



Advance
LEADING EDGE. LOCAL. CANADIAN.

THANKS FOR SHOPPING LOCAL!

1300 Portage Ave | 204.786.6541 | advance.mb.ca

HOURS: MON - SAT 10AM - 6PM | SHOP ONLINE 24/7



Advance

ANNIVERSARY EVENT

HIT THE ROAD WITH DEALS ON CAR & MARINE AUDIO

MARINE AUDIO

No Payments
AND NO INTEREST FOR 6 MONTHS!

CAR AUDIO



Kenwood Marine Digital Media Receiver with Bluetooth

\$198

KMRM332BT

SAVE \$21



Kenwood Marine Compact 4-channel Amplifier with Bluetooth

\$548

KACM5024BT

SAVE \$51



Kenwood Digital Media Receiver with Bluetooth

\$178

DPX305MBT

Save \$21

Kenwood 6.8" Media Receiver with Wireless Apple Carplay

\$498

DMX505

Save \$51



6.8"



Pioneer 9" Media Receiver with Wireless Apple Carplay

\$949

DMHWT5000NEX

Save \$50

9"

DASH CAMERAS



Thinkware Full HD

\$169

Q200

Save \$30



GNET G-ONX Full HD Dual Dash & Rear

\$229

GONX

Save \$20



Kenwood 6.5" Marine Speakers

\$148

KFC1653MRW/B

SAVE \$51



Kenwood 6.5" Marine Speakers

\$248

KFC1673MRWL/BL

SAVE \$51



Rockford Fosgate 6" Marine Speakers

\$379

M165/B

SAVE \$70

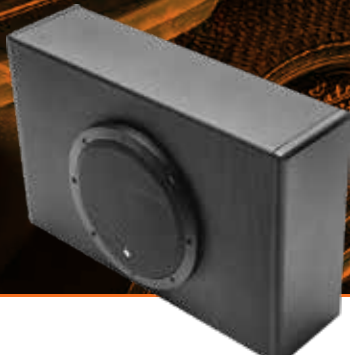
SUBWOOFERS



JL Audio 10W0v3 10" Ported BassWedge - 300W, 4Ω

\$379

CP110W0V3



Rockford Fosgate P300 8" Amplified Sub - 300W

\$449

P3008P

Save \$80



Alpine 10" Halo Series Ported Sub - 750W

\$898

R2SB10V

Save \$201

Why Advance?

No hunting for spots or membership fees here. With stress-free parking and a welcoming environment, your shopping experience at Advance is as convenient as it is enjoyable.

CONVENIENT, HASSLE-FREE PARKING!



\$649

TMS65

Save \$120

Rockford Fosgate Harley Davidson 6.5" Power Series Speakers

- Fit directly into front fairing and rear Tour-Pak locations.
- Weather and water resistant.
- For 2014-up Street Glide and 2015-up Road Glide Harley Davidson.



Rockford Fosgate Harley Davidson Digital Media Receiver

- SiriusXM Satellite Radio ready.
- Bluetooth, USB, iPod, iPhone, MP3 and AM/FM.
- For 1998-2013 Harley Davidson.

Save \$180

\$999

PMXHD9813



Advance

LEADING EDGE. LOCAL. CANADIAN.

THANKS FOR SHOPPING LOCAL!

1300 Portage Ave | 204.786.6541 | advance.mb.ca

HOURS: MON - SAT 10AM - 6PM | SHOP ONLINE 24/7

HOME SHOULD BE YOUR HAVEN. YOUR PERSONAL SANCTUARY...

At Advance, we believe your home should be a space that works for you and your lifestyle. Why not make every moment there more comfortable, connected, and effortless?

As Manitoba's trusted smart home automation and residential technology experts, we proudly serve all areas of the province. Whether you're a city dweller, enjoying the quiet life out in the country, or escaping to the lake, we create intelligent systems designed to simplify everyday life and elevate how you experience the comforts of home.

Let's face it, if home is your haven, it shouldn't feel like work.

Imagine driving up a well-lit driveway, the perfect temperature inside, your favourite music playing, and the lights welcoming you inside. No matter where you are, virtually every electronic system can be seamlessly connected and controlled - from anywhere.

With thoughtfully designed automation solutions, your home responds to you and

your needs, enhancing comfort, convenience, security, and peace of mind. Because true home automation isn't just about technology, it's about creating a lifestyle that feels effortless.

From prewire planning during construction to fully integrated smart home systems, we provide expert design, professional installation, and dedicated ongoing support. Our team ensures every detail works beautifully behind the scenes.

BECAUSE GOOD DESIGN IS IN THE DETAILS YOU DON'T SEE.

ADVANCE YOUR LIFESTYLE WITH



LIGHTING • AUDIO • SECURITY • CLIMATE • ENTERTAINMENT • SHADES • SURVEILLANCE • ACCESS CONTROL



Trevor Siepman
ART Manager
14 Years at Advance



Bruno Deleau
Sales Consultant
24 Years at Advance



Lyall Krahn
Sales Consultant
21 Years at Advance



Terry Young
Project Coordinator
34 Years at Advance

CALL 204-784-6391 OR VISIT:
advance.mb.ca/advanced-residential-technology

OUR PARTNERS INCLUDE:

