

# HOLMES

GARAGE DOOR COMPANY®



LEADERS IN  
STYLE ■ SELECTION ■ CRAFTSMANSHIP

Settlers® Design 13 in White  
with SQ24 Windows

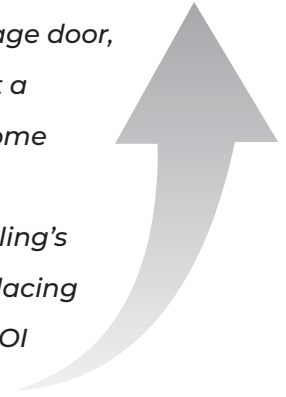


Holmes Garage Door Company® offers a complete line of top quality doors including traditional raised panel doors, carriage house style doors, contemporary styles and commercial. With thousands of garage door designs to choose from, Holmes is Making it Easy to find and purchase the right door for your style!



## RETURN ON INVESTMENT

*Most home upgrades, including a new garage door, increase a home's value at least a little. But a garage door replacement tops the list of home improvements with the best return on investment at resale. According to Remodeling's National Cost vs. Value Report for 2023, replacing a garage door gives a consumer a 102.7% ROI (Return on Investment).*



## WHY IS THE ROI ON A GARAGE DOOR SO HIGH?

A new garage door will increase the value of your home along with other benefits. Here are three key ways a new garage door increases the value of your home.



**CURB APPEAL** – A very old garage door can make a house look worn out or out of date with the rest of the neighborhood. New garage doors add visual appeal to the outside of the property.



**SECURITY** – Older garage doors can become safety and security problems as they age because they don't have all the advancements of a more modern garage door system.



**EFFICIENCY** – New garage doors tend to be energy efficient, especially if they're insulated. Some come with windows to cut down on the need to turn on artificial lights when you're in the garage. Over time, that's less money spent on utilities and a more environmentally-friendly home.

# TABLE OF CONTENTS



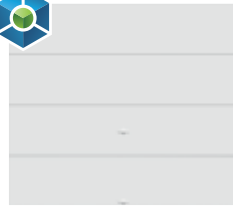
**Contemporary Aluminum**

pgs. 8–9



**Contemporary Aluminum Sleek**

pgs. 10–11



**Contemporary Steel**

pgs. 12–13



**Glenmoor™ Carriage House**  
5-LAYER CONSTRUCTION

pgs. 14–15



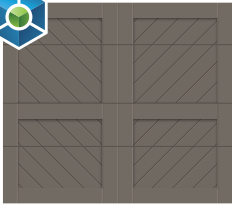
**Glenmoor™ Carriage House**  
4-LAYER CONSTRUCTION

pgs. 16–17



**Glenmoor™ Elements**

pgs. 18–19



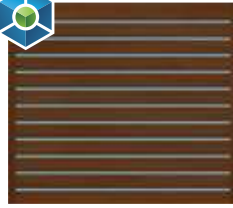
**Glenmoor™ Chevron**

pgs. 20–21



**Glenmoor™ Louver**

pgs. 22–23



**Glenmoor™ Modern**

pgs. 24–25



**Settlers®**

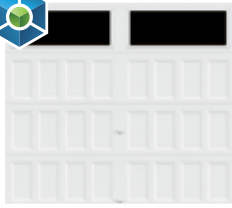
pgs. 26–27



Glenmoor™ Elements  
in Black Finish



**Artistry®  
Steel**  
pgs. 28–29



**Westport™  
Steel**  
pgs. 30–31



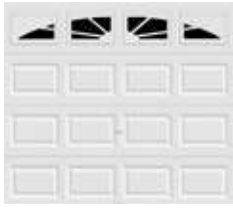
**Lodgewood®  
Semi-Custom**  
pgs. 32–33



**Decorative  
Hardware**  
pgs. 34–35



**Standard Steel  
Gold**  
pgs. 36–37



**Standard Steel  
Silver & Bronze**  
pg. 38



**Residential  
Windows**  
pgs. 40–41



**Residential  
Glass**  
pgs. 42–43



**Commercial  
Sectional Doors**  
pgs. 44–45



**Commercial  
Roll-Up Doors**  
pg. 47

## OTHER INFORMATION TO KNOW

Safety, Quality & Innovation ..... pg. 6  
 How-To-Measure Information ..... pg. 48



Glenmoor™ Carriage House  
4-Layer in Medium Finish

# intellcore<sup>®</sup>

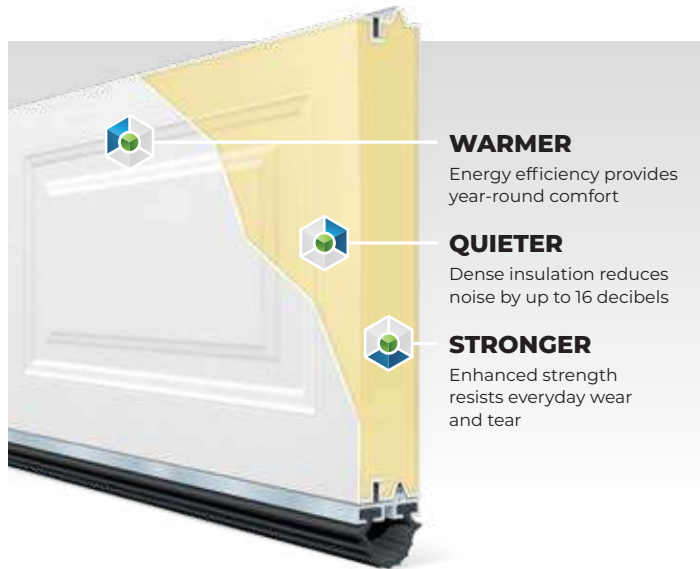
insulation technology

**WARMER. QUIETER. STRONGER.**

Garage doors featuring Intellcore<sup>®</sup> insulation technology represent the ultimate smart choice for homeowners. Intellcore<sup>®</sup> insulation by Holmes Garage Door Company<sup>®</sup> is a proprietary polyurethane foam that is injected into a garage door, expanding to fill the entire structure. The result is a door with incredible strength and durability. Its dense insulation also produces a quieter door while its industry-leading R-values (up to 20.4) provide year-round comfort and improved energy efficiency.



Look for the Intellcore<sup>®</sup> insulation icon throughout this brochure on select door models.



**WARMER**  
Energy efficiency provides year-round comfort

**QUIETER**  
Dense insulation reduces noise by up to 16 decibels

**STRONGER**  
Enhanced strength resists everyday wear and tear

## UPGRADE, PROTECT AND EXTEND

### THE LIFE OF YOUR GARAGE DOOR

#### HEAVY HARDWARE UPGRADE

- Nylon ball bearing rollers for quiet, long-lasting operation
- Heavy-duty 14 gauge hinges for smooth worry-free operation



## SAFETY, QUALITY & INNOVATION



#### Deep Embossed Panels

Natural woodgrain texture and detailed raised panel design enhance door's beauty.



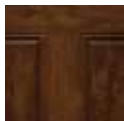
#### Coped Edges

Custom crafted steel doors are designed with stylish beveled, coped edges and decorative center grooves.



#### Decorative Windows

Inspired by current architectural trends, our windows add a new look to garage doors while complementing your home.



#### Ultra-Grain<sup>®</sup> Finish

Ultra-Grain<sup>®</sup> finish delivers the best of both worlds — the realism of natural wood with the low maintenance and energy-efficient benefits of insulated steel.



#### Rust-Prevention System

Unsurpassed rust-prevention system creates a virtually maintenance-free surface.



#### EZ-SET<sup>®</sup> Torsion Springs

Patented springs for easier, faster and safer installation. Eliminates the labor intensive and dangerous manual winding process.

7130 Standard Steel in Black with Clear Windows

## 3 EASY STEPS TO CHOOSING YOUR NEW DOOR

### 1 CHOOSE YOUR DOOR STYLE

**SPECIALTY** OR **STANDARD STEEL**

See page 4 for examples of each door style.

### 2 CHOOSE YOUR CONSTRUCTION

#### DOOR CONSTRUCTION

	2" Polyurethane	1-3/8" Polyurethane	2" Bonded Polystyrene	1-3/8" Bonded Polystyrene	1-5/16" Polystyrene	Steel
<b>FEATURES</b>						
<b>intellicores</b>						
<b>Insulation Rating (R-value)/ Energy Efficiency</b>	18.4*	12.9	9.0	6.5	6.3	N/A
<b>Security</b>						
<b>Noise Control</b>						
<b>Dent Resistance</b>						
<b>Warranty</b>	Limited Lifetime	Limited Lifetime	Limited Lifetime	Limited Lifetime	Limited Lifetime 25-year	Limited Lifetime 15-year

\*Glenmoor™ R-values range from 6.3 to 20.4. See pages 15, 17, 19, 21, 23 and 25 for more information.

NOTE: Higher R-values mean increased energy efficiency, reduced noise, improved security and durability. Calculated door section R-value is in accordance with DASMA TDS-163.

### 3 CUSTOMIZE YOUR DOOR



Colors



Windows

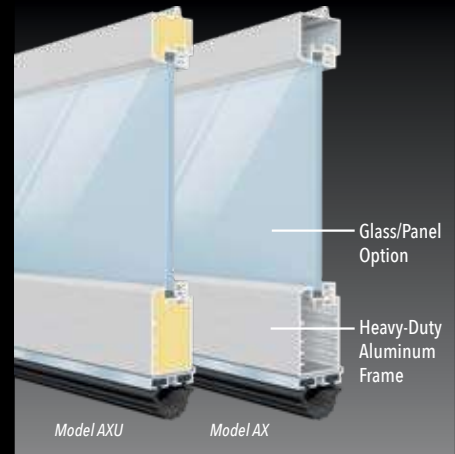


Hardware

# CONTEMPORARY ALUMINUM

CONTEMPORARY ALUMINUM garage doors combine aluminum and glass to create a sleek, modern look. Many glass and panel combinations are available for varying degrees of privacy.

## DURABLE CONSTRUCTION



Contemporary Aluminum Model AX with Bronze Anodized Frame and Insulated Frosted Glass



Contemporary Aluminum Model AX with Black Anodized Frame and Insulated Frosted Glass

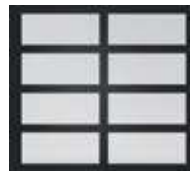
## CONSTRUCTION AND FINISH

- Durable, low-maintenance 2-1/8" commercial grade aluminum frame with many glazing options.
- Intellicore® polyurethane insulated rails and stiles (Model AXU).
- R-value 3.8/U-Factor 0.86 (Model AXU when glazed with clear insulated glass).
- Tempered full-view glass, acrylic or solid aluminum panel options. Insulated glass garage door panels are available for increased energy efficiency.
- Frame and solid aluminum panels available in choice of anodized and powder coated finishes.
- Choose from our selection of aluminum garage door panel colors: White, Bronze, Chocolate, Clear Anodized, Bronze Anodized, Black Anodized and Dark Bronze Anodized.
- Color-matched aluminum grip handle.
- WindCode® product available.

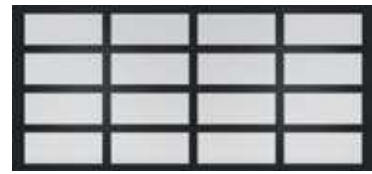
## WARRANTIES



## MODELS



AX/AXU  
(Single car door)

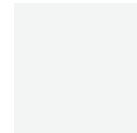


AX/AXU  
(Double car door)

## FRAME/SOLID PANEL COLOR OPTIONS



Clear Aluminum  
(Anodized)



Standard  
White



Bronze  
(Painted)



Chocolate  
(Painted)



Bronze\*  
(Anodized)



Black\*  
(Anodized)



Dark Bronze\*  
(Anodized)



Color-Matched  
Handles

\*Colors available at an additional cost.

Due to the anodizing process, slight color variation may occur.

The use of "Bronze (Painted)" is recommended for a more consistent bronze finish color.

Powder coated custom colors available upon request; contact customer service for pricing.

## GLASS/PANEL OPTIONS



Clear Glass\*



Gray Tinted Glass\*



Midnight Gray  
Tinted Glass\*



Bronze Tinted  
Glass\*



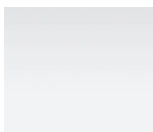
Mirrored Glass\*



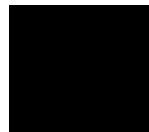
Obscure Glass\*



Clear Laminate  
Impact Rated Glass†



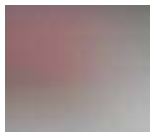
White Laminate  
Glass



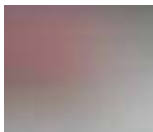
Black Laminate  
Glass



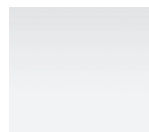
Clear Acrylic



Frosted Glass\*  
(Satin Etched)



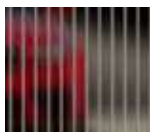
Frosted Acrylic



White Acrylic



Clear Polygal™



Bronze Polygal™



Clear Anodized  
(Color-matched to frame)

\*Glass is tempered.

† 5/16" clear, white, gray and bronze laminate impact rated glass is available only on AXW8/AXUW8.

Glass available in single pane or insulated (laminated and mirrored glass not available insulated).

Panels can be aluminum to match the frame. Glass/acrylic panels may be combined with aluminum panels. Custom glass and colors available.

Acrylic windows require special cleaning. Never use products that contain ammonia or petroleum products to clean acrylic. Please visit [holmesgaragedoor.com/acrylic](http://holmesgaragedoor.com/acrylic) for complete details.

# CONTEMPORARY ALUMINUM SLEEK

CONTEMPORARY ALUMINUM SLEEK garage doors are the perfect choice to modernize any home. Not only can they transform garages, they can also be used as an indoor loft partition or as versatile solarium doors.

## DURABLE CONSTRUCTION



Contemporary Aluminum Sleek Model AZ6U with Black Anodized Frame and Frosted Acrylic



Contemporary Aluminum Sleek Model AZ6 with Black Anodized Frame and Gray Acrylic

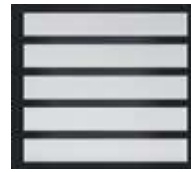
## CONSTRUCTION AND FINISH

- Durable, low-maintenance 2-1/8" commercial grade aluminum frame with many glazing options.
- Intellicore® polyurethane insulated rails and stiles (Model AZ6U).
- Tempered full-view glass, acrylic or solid aluminum panel options. Insulated glass garage door panels are available for increased energy efficiency.
- Frame and solid aluminum panels available in choice of anodized and powder coated finishes.
- Choose from our selection of aluminum garage door panel colors: White, Bronze, Chocolate, Clear Anodized, Bronze Anodized, Black Anodized and Dark Bronze Anodized.
- Color-matched aluminum grip handle.
- WindCode® product available.

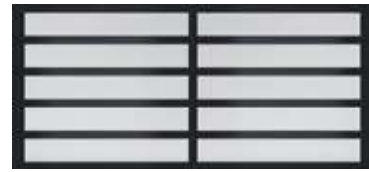
## WARRANTIES

<b>PAINT SYSTEM</b> LIMITED WARRANTY <b>5</b> YEAR	<b>HARDWARE</b> LIMITED WARRANTY <b>3</b> YEAR
---	---

## MODELS



AZ6/AZ6U  
(Single car door)

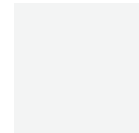


AZ6/AZ6U  
(Double car door)

## FRAME/SOLID PANEL COLOR OPTIONS



Clear Aluminum  
(Anodized)



Standard  
White



Bronze  
(Painted)



Chocolate  
(Painted)



Bronze\*  
(Anodized)



Black\*  
(Anodized)



Dark Bronze\*  
(Anodized)



Color-Matched  
Handles

\*Colors available at an additional cost.

Due to the anodizing process, slight color variation may occur.

The use of "Bronze (Painted)" is recommended for a more consistent bronze finish color.

Powder coated custom colors available upon request; contact customer service for pricing.

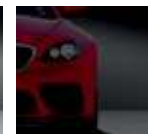
## GLASS/PANEL OPTIONS



Clear Glass\*



Gray Tinted Glass\*



Midnight Gray  
Tinted Glass\*



Bronze Tinted  
Glass\*



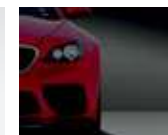
Mirrored Glass\*



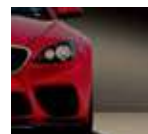
Clear Laminate  
Glass



White Laminate  
Glass



Gray Laminate  
Glass



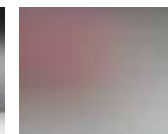
Bronze Laminate  
Glass



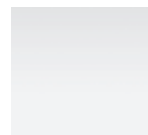
Black Laminate  
Glass



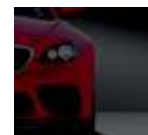
Clear Acrylic



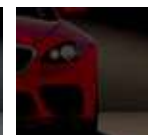
Frosted Acrylic



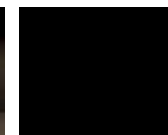
White Acrylic



Gray Acrylic



Bronze Acrylic



Black Acrylic

\*Glass is tempered.

Glass available in single pane or insulated (laminated and mirrored glass not available insulated).

Panels can be aluminum to match the frame. Glass/acrylic panels may be combined with aluminum panels. Custom glass and colors available.

Acrylic windows require special cleaning. Never use products that contain ammonia or petroleum products to clean acrylic. Please visit [holmesgaragedoor.com/acrylic](http://holmesgaragedoor.com/acrylic) for complete details.

# CONTEMPORARY STEEL

CONTEMPORARY STEEL garage doors complement contemporary and mid-century modern home styles.

## THREE-LAYER CONSTRUCTION

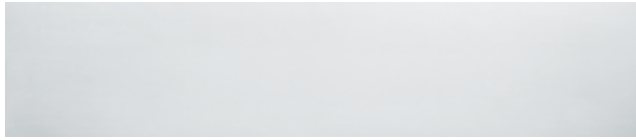


Polyurethane or Bonded Polystyrene Insulation



Contemporary Steel in Ultra-Grain® Plank Natural Finish with Contemporary Slim Windows

## DOOR STYLES

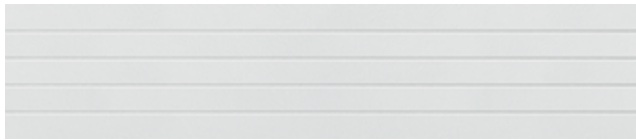


Modern Flush Panel

**FLUSH SERIES** – Models 7201, 7131, 6201 and 6131

**DESIGNER SERIES** – Models 7202, 7132, 6202 and 6132

**MODERN SERIES** – Models 7208, 7138, 6208 and 6138



Modern Grooved Panel

**DESIGNER SERIES** – Models 7205 and 6205

**MODERN SERIES** – Models 7209, 7139 and 6209

## WARRANTIES

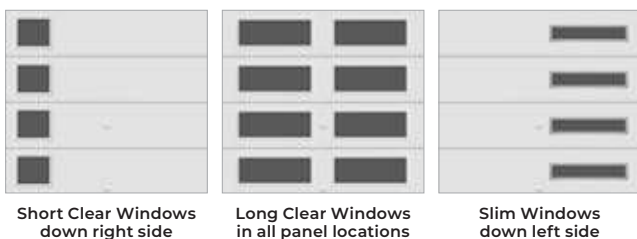


## WINDOWS



Additional window designs available.  
See page 40 for Designer Insert Series window options.  
See page 41 for Architectural and Contemporary Slim Series window options.

## CONTEMPORARY WINDOW OPTIONS



Available only on Modern Series models.  
Contemporary window configurations are available in many design options, including windows in each section and down one side, short, long and slim windows or windows in all sections. For doors with multiple window sections, the window locations must be the same in every section.  
Door models offering these configurations utilize 24" and 21" section heights.  
NOTE: Contemporary window configurations are described from inside the garage looking out.

## CONSTRUCTION AND FINISH

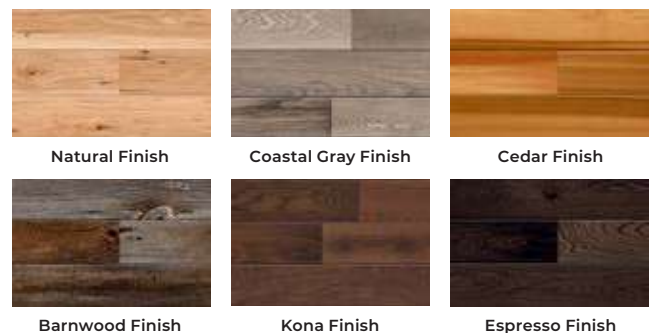
- Four 3-layer construction types to choose from:
  - 7202, 7201, 7208, 7205 and 7209 have 2" thick Intellicore® polyurethane insulation (18.4 R-value)
  - 7132, 7131, 7138 and 7139 have 1-3/8" thick Intellicore® polyurethane insulation (12.9 R-value)
  - 6202, 6201, 6208, 6205 and 6209 have 2" thick bonded polystyrene insulation (9.0 R-value)
  - 6132, 6131 and 6138 have 1-3/8" thick bonded polystyrene insulation (6.5 R-value)
- Many window options available.
- Ultra-Grain® and Lustra™ finishes available on select three-layer models.

## COLOR OPTIONS



\*Not available on all models; contact customer service for availability.  
Due to the printing process, colors may vary.

## ULTRA-GRAIN® PLANK

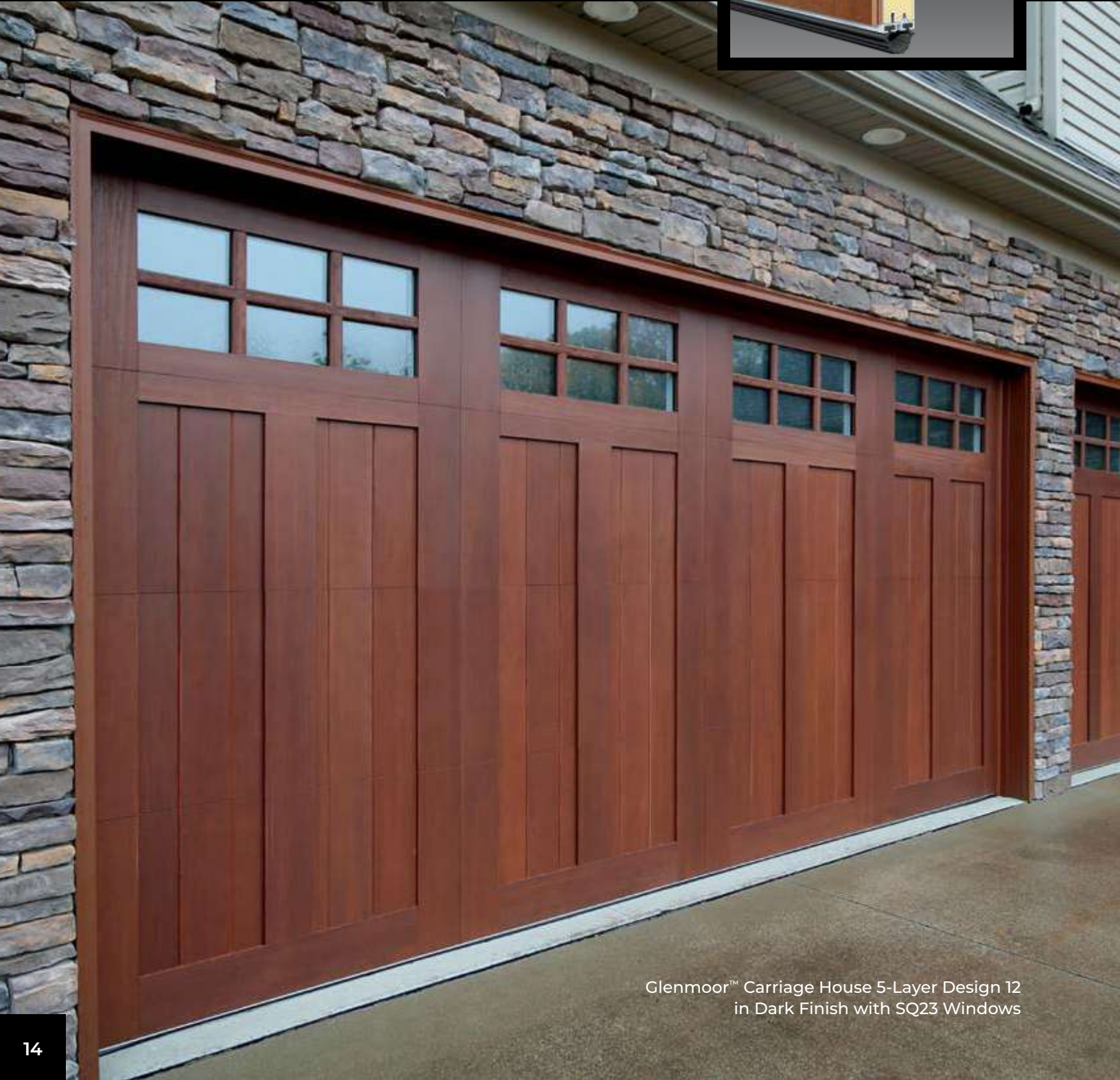


Available in six finishes that complement mid-century, farmhouse, coastal cottage and transitional home styles.  
Exterior steel surface has a wood-look plank design that runs horizontal, with clear and simple lines.  
Optional windows available in color matched frames or as a standout in Silver and Black accent colors.  
Not available on all models; contact customer service for availability.  
Due to the printing process, colors may vary.

# GLENMOOR™ CARRIAGE HOUSE 5-LAYER CONSTRUCTION

The natural beauty of wood with the durability and energy-efficient benefits of composite and steel.

## FIVE-LAYER CONSTRUCTION



Glenmoor™ Carriage House 5-Layer Design 12  
in Dark Finish with SQ23 Windows

## CONSTRUCTION AND FINISH

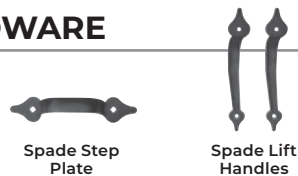
- Five-layer construction with Intellicore® polyurethane insulated, composite faux wood doors (20.4 R-value). Swing-out appearance — modern operation.
- Available in 15 door designs and 13 window or top sections for multiple door design options.
- Composite cladding options include Clear Cypress and Mahogany. Composite overlay options include Clear Cypress and Mahogany.
- Insulated glass options include clear, frosted, seeded, rain and obscure. See page 43 for specialty glass options.
- Attractive beveled-edge, clip-in grilles are removable for easy window cleaning.
- Premium grade hardware, rollers and track assure smooth, quiet, long-lasting operation.
- Factory finished in Natural, Medium, Dark, Walnut, Slate, Bronze, Charcoal, Espresso or Black Finish; doors can also be ordered in White Finish (Mahogany only) or primed for homeowners wishing to custom paint or stain their doors.

## WARRANTIES

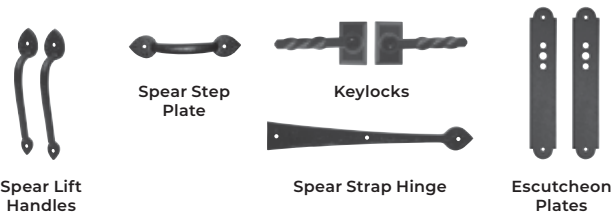


## DECORATIVE HARDWARE

INCLUDED

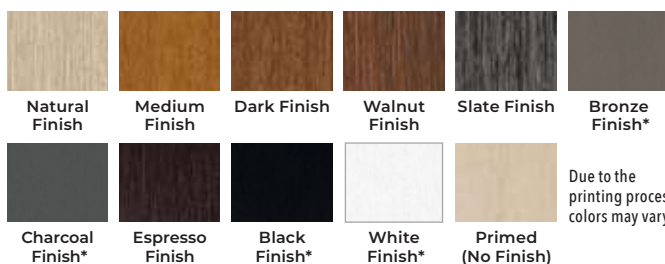


OPTIONAL



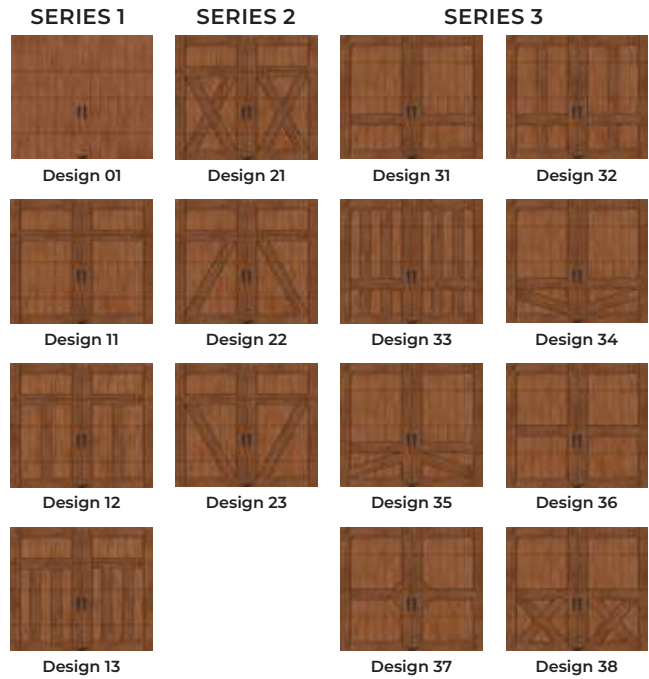
Additional hardware options are available; see pages 34-35.

## COLORS



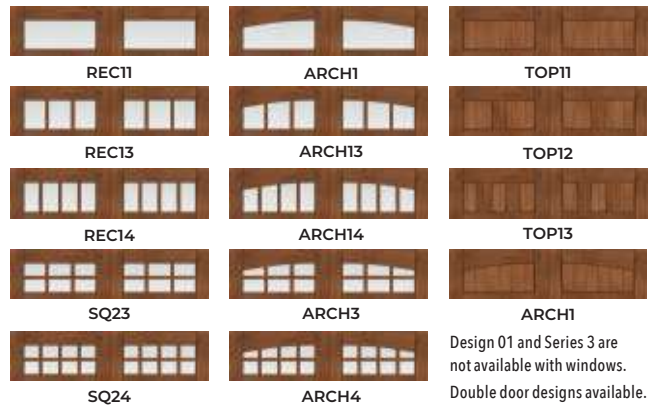
\*Bronze, Charcoal, Black and White Finish available only on Mahogany cladding and overlays. Doors can be ordered primed for those homeowners wishing to custom paint or stain their doors. Door stain color will vary slightly within a door due to finishing process.

## DOOR DESIGNS



Doors shown in Dark Finish with Clear Cypress composite cladding and Clear Cypress composite overlay. Design 01 does not have an overlay.

## WINDOWS/TOP SECTION OPTIONS



Design 01 and Series 3 are not available with windows. Double door designs available.

## MATERIAL DESIGN OPTIONS

CLADDING



OVERLAY



Cladding and overlay material options may be mixed and matched.

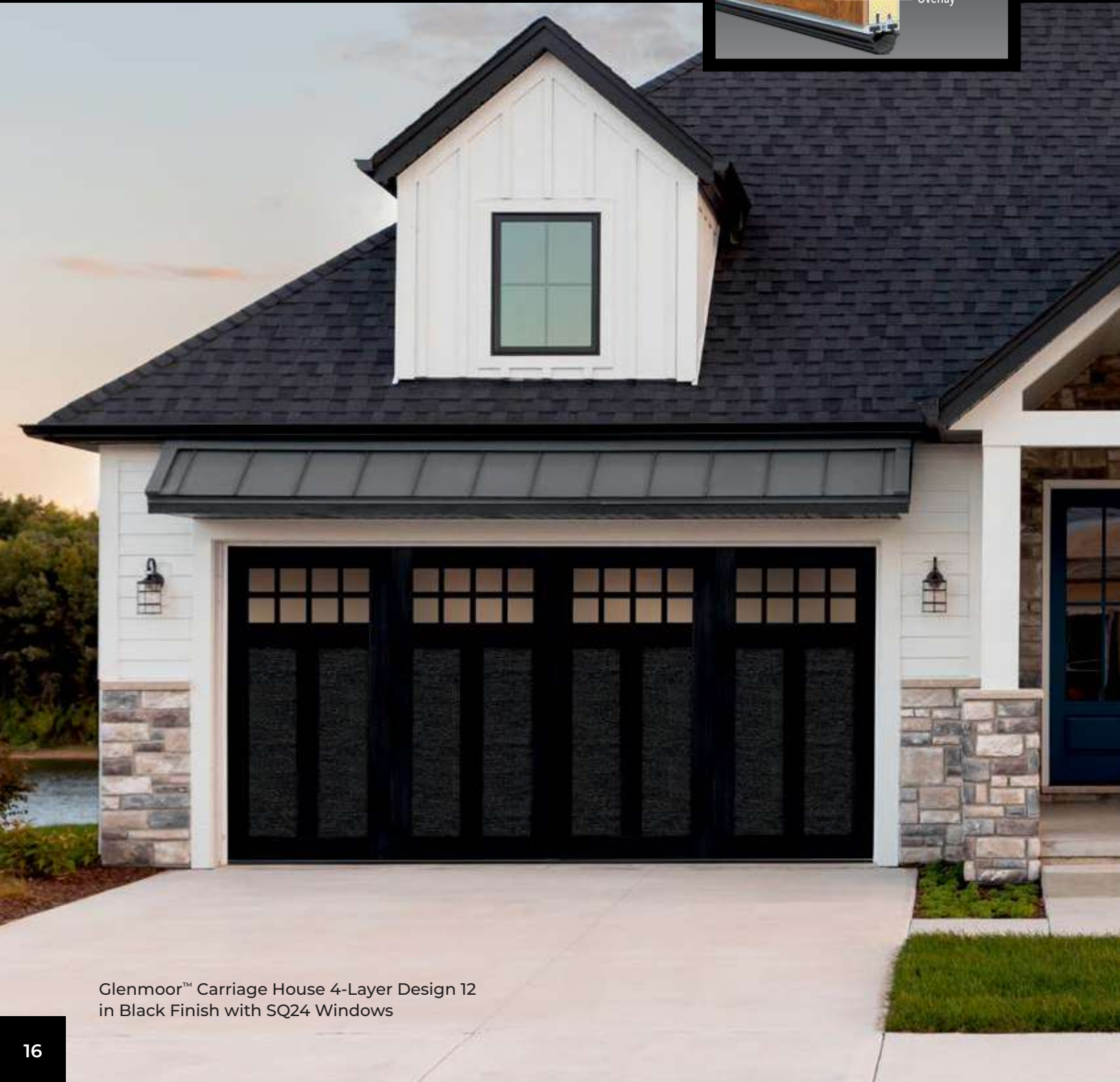
# GLENMOOR™ CARRIAGE HOUSE 4-LAYER CONSTRUCTION

Insulated carriage house garage doors with faux wood-look overlays on a steel base.

## FOUR-LAYER CONSTRUCTION



- Steel
- Insulation
- Steel with Ultra-Grain<sup>®</sup> Finish (shown) or Solid Color Steel
- Overlay



Glenmoor™ Carriage House 4-Layer Design 12  
in Black Finish with SQ24 Windows

## CONSTRUCTION AND FINISH

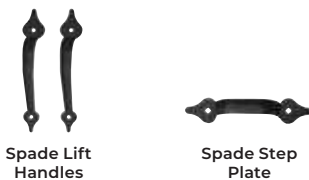
- Four-layer construction with Intellicore® polyurethane insulated, faux wood doors (18.4 R-value). Swing-out appearance — modern operation.
- Available in 14 door designs and 13 window or top sections for multiple door design options.
- Base steel options include Ultra-Grain® finish in Clear Cypress or solid color steel. Composite overlay available in Clear Cypress or Mahogany.
- Insulated glass options include clear, frosted, seeded, rain and obscure. See page 43 for specialty glass options.
- Attractive beveled-edge, clip-in grilles are removable for easy window cleaning.
- Premium grade hardware, rollers and track assure smooth, quiet, long-lasting operation.

## WARRANTIES

<b>COMPOSITE OVERLAY DELAMINATION</b> LIMITED WARRANTY <b>5 YEAR</b>	<b>HARDWARE</b> LIMITED WARRANTY <b>5 YEAR</b>	<b>STEEL PAINT SYSTEM</b> LIMITED WARRANTY <b>LIFETIME</b>
--	--	--

## DECORATIVE HARDWARE

### INCLUDED



### OPTIONAL



Additional hardware options are available; see pages 34-35.

## DOOR DESIGNS

SERIES 1	SERIES 2	SERIES 3	
Design 11	Design 21	Design 31	Design 32
Design 12	Design 22	Design 33	Design 34
Design 13	Design 23	Design 35	Design 36
		Design 37	Design 38

All doors shown in Medium Finish with Clear Cypress composite overlay.

## WINDOWS/TOP SECTION OPTIONS

REC11	ARCH1	TOP11
REC13	ARCH13	TOP12
REC14	ARCH14	TOP13
SQ23	ARCH3	ARCH1
SQ24	ARCH4	

Series 3 is not available with windows. Double door designs available.

## MATERIAL DESIGN OPTIONS

STEEL BASE	OVERLAY	
Ultra-Grain® Finish Clear Cypress or Solid Color Steel	Clear Cypress	Mahogany

Note: Cladding is not present on Carriage House 4-Layer doors.

## COLORS

Natural Finish	Medium Finish	Dark Finish	Walnut Finish	Slate Finish	Bronze Finish*
Charcoal Finish*	Espresso Finish	Black Finish*	White Finish*	Primed (No Finish)	

\*Bronze, Charcoal, Black and White Finish available only on Mahogany cladding and overlays.

Steel surfaces have woodgrain texture. Doors can be ordered primed for those homeowners wishing to custom paint or stain their doors. Note: Primed solid steel base is a brown color. Door stain color will vary slightly within a door due to finishing process. Due to the printing process, colors may vary.

# GLENMOOR™ ELEMENTS

Moisture-resistant composite overlays featuring clean, square “Shaker” edges and durable, insulated steel to give you the look of painted wood without the upkeep.

## FOUR-LAYER CONSTRUCTION

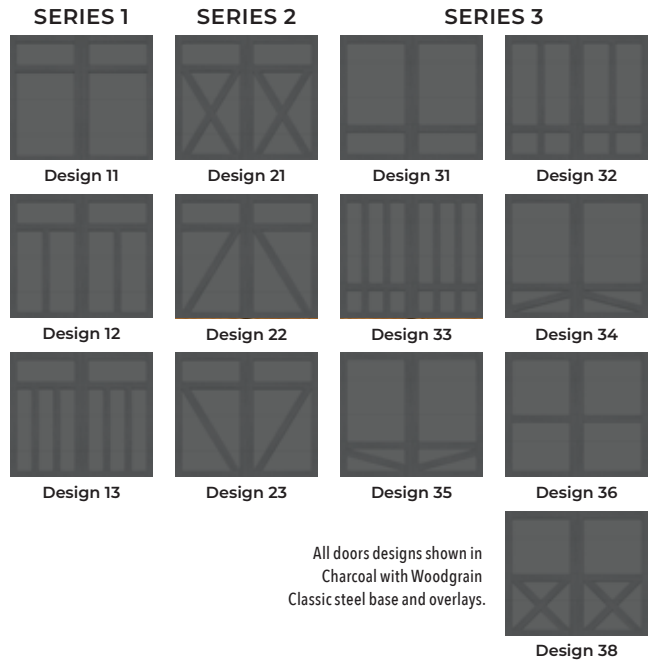


Glenmoor™ Elements Design 12 in Charcoal Finish with REC14 Windows

## CONSTRUCTION AND FINISH

- Four-layer, steel and composite overlay doors with 1-3/8" bonded polystyrene insulation (6.5 R-value).
- Multiple door designs and window options available.
- Base steel and composite overlay available in Woodgrain Classic surface texture.
- Insulated glass options include clear, frosted, seeded, rain and obscure. See page 43 for specialty glass options.
- Attractive beveled-edge, clip-in grilles are removable for easy window cleaning.
- Premium grade hardware, rollers and track assure smooth, quiet, long-lasting operation.

## DOOR DESIGNS

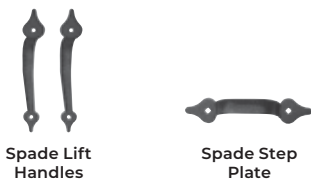


## WARRANTIES



## DECORATIVE HARDWARE

### INCLUDED

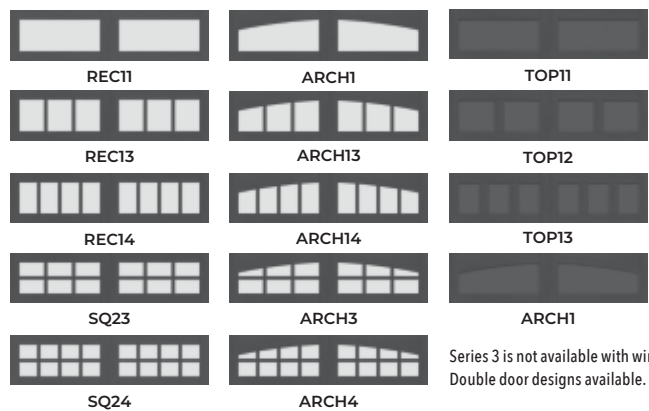


### OPTIONAL



Additional hardware options are available; see pages 34-35.

## WINDOWS/TOP SECTION OPTIONS



## MATERIAL DETAIL



## COLORS



# GLENMOOR™ CHEVRON

Charming and elegant, the exceptional style of Glenmoor™ Chevron garage doors makes an exquisite addition to any homeowner's exterior. With its unique cladding design options, it will give your home that extra charm it was longing for.

## FIVE-LAYER CONSTRUCTION



Glenmoor™ Chevron Design 11A in Dark Finish with REC14 Windows

## CONSTRUCTION AND FINISH

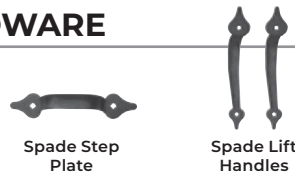
- Five-layer construction with Intellicore® polyurethane insulated, composite faux wood doors (20.4 R-value). Swing-out appearance — modern operation.
- Available in 8 door designs and 13 window or top sections for multiple door design options.
- Composite cladding options include Clear Cypress and Mahogany. Composite overlay options include Clear Cypress and Mahogany.
- Insulated glass options include clear, frosted, seeded, rain and obscure. See page 43 for specialty glass options.
- Attractive beveled-edge, clip-in grilles are removable for easy window cleaning.
- Premium grade hardware, rollers and track assure smooth, quiet, long-lasting operation.
- Factory finished in Natural, Medium, Dark, Walnut, Slate, Bronze, Charcoal, Espresso or Black Finish; doors can also be ordered in White Finish (Mahogany only) or primed for homeowners wishing to custom paint or stain their doors.

## WARRANTIES

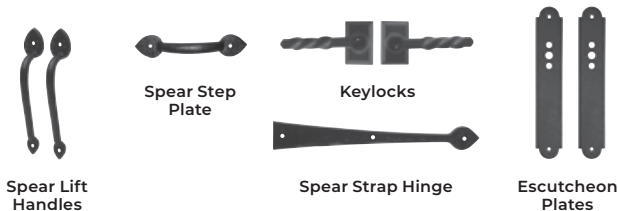


## DECORATIVE HARDWARE

### INCLUDED

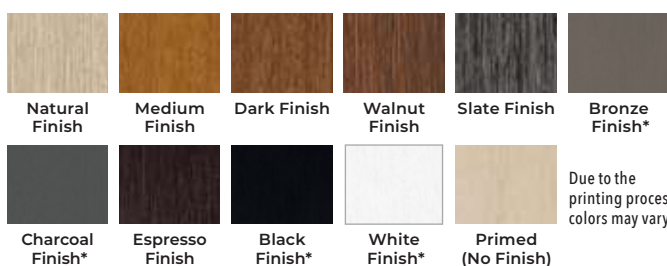


### OPTIONAL



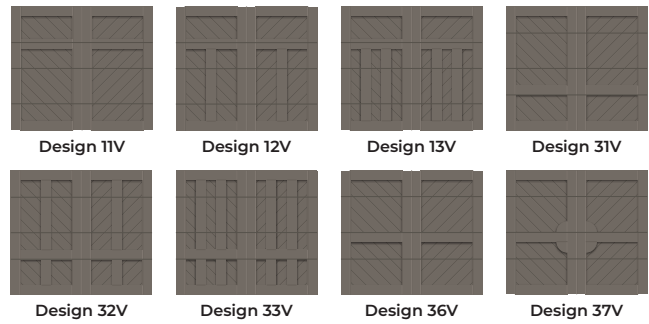
Additional hardware options are available; see pages 34-35.

## COLORS



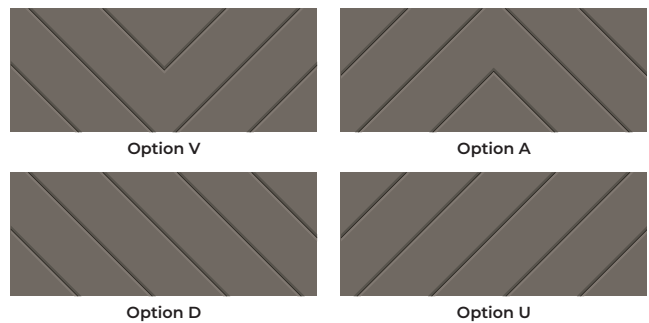
\*Bronze, Charcoal, Black and White Finish available only on Mahogany cladding and overlays. Doors can be ordered primed for those homeowners wishing to custom paint or stain their doors. Door stain color will vary slightly within a door due to finishing process.

## DOOR DESIGNS

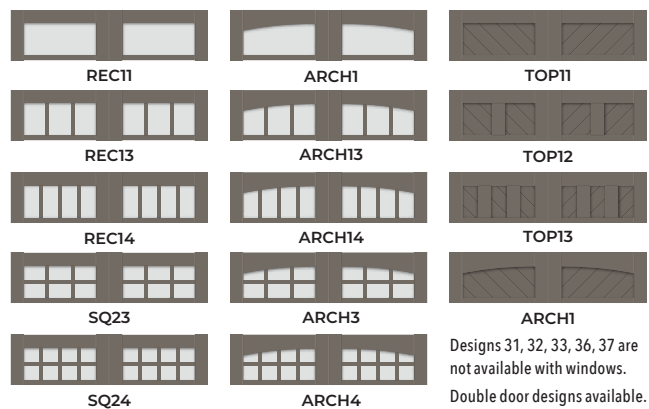


Doors shown in Bronze Finish with Mahogany composite cladding and Mahogany composite overlay.

## CLADDING DESIGN OPTIONS



## WINDOWS/TOP SECTION OPTIONS



## MATERIAL DESIGN OPTIONS

### CLADDING



### OVERLAY



Cladding and overlay material options may be mixed and matched.

# GLENMOOR™ LOUVER

Insulated garage doors with composite louver overlays adding charm with plantation shutter style.

## FIVE-LAYER CONSTRUCTION



Glenmoor™ Louver Design 52 in Walnut Finish with SQ24 Windows

## CONSTRUCTION AND FINISH

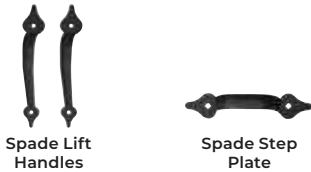
- Five-layer construction with Intellicore® polyurethane insulated, composite faux wood doors. R-values range from 18.4 to 20.4. Swing-out appearance — modern operation.
- Available in 12 door designs and 6 window or top sections for multiple door design options.
- Cladding/base steel options include Louver Mahogany, Ultra-Grain® finish in Clear Cypress or solid color steel. Composite overlay available in Clear Cypress or Mahogany.
- Insulated glass options include clear, frosted, seeded, rain and obscure. See page 43 for specialty glass options.
- Attractive beveled-edge, clip-in grilles are removable for easy window cleaning.
- Premium grade hardware, rollers and track assure smooth, quiet, long-lasting operation.
- Factory finished in Natural, Medium, Dark, Walnut, Slate, Bronze, Charcoal, Espresso or Black Finish; doors can also be ordered in White Finish (Mahogany only) or primed for homeowners wishing to custom paint or stain their doors.

## WARRANTIES



## DECORATIVE HARDWARE

### INCLUDED

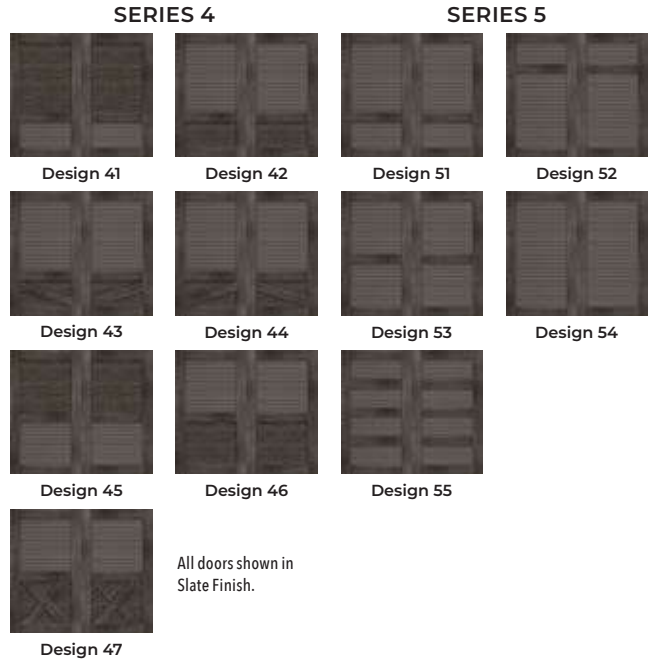


### OPTIONAL



Additional hardware options are available; see pages 34-35.

## DOOR DESIGNS



## WINDOWS/TOP SECTION OPTIONS



Window grilles are Mahogany texture. Windows available only on Louver Design 52. Standard windows available on the following widths only: 6'2", 8'0", 9'0", 10'0", 10'2", 12'0", 12'2", 13'6", 15'0", 15'2", 15'6", 15'8", 16'0", 16'2", 18'0", 18'2", 20'0", 20'2".

## MATERIAL DESIGN OPTIONS



Note: Cladding and overlay material options may be mixed and matched.

## COLORS

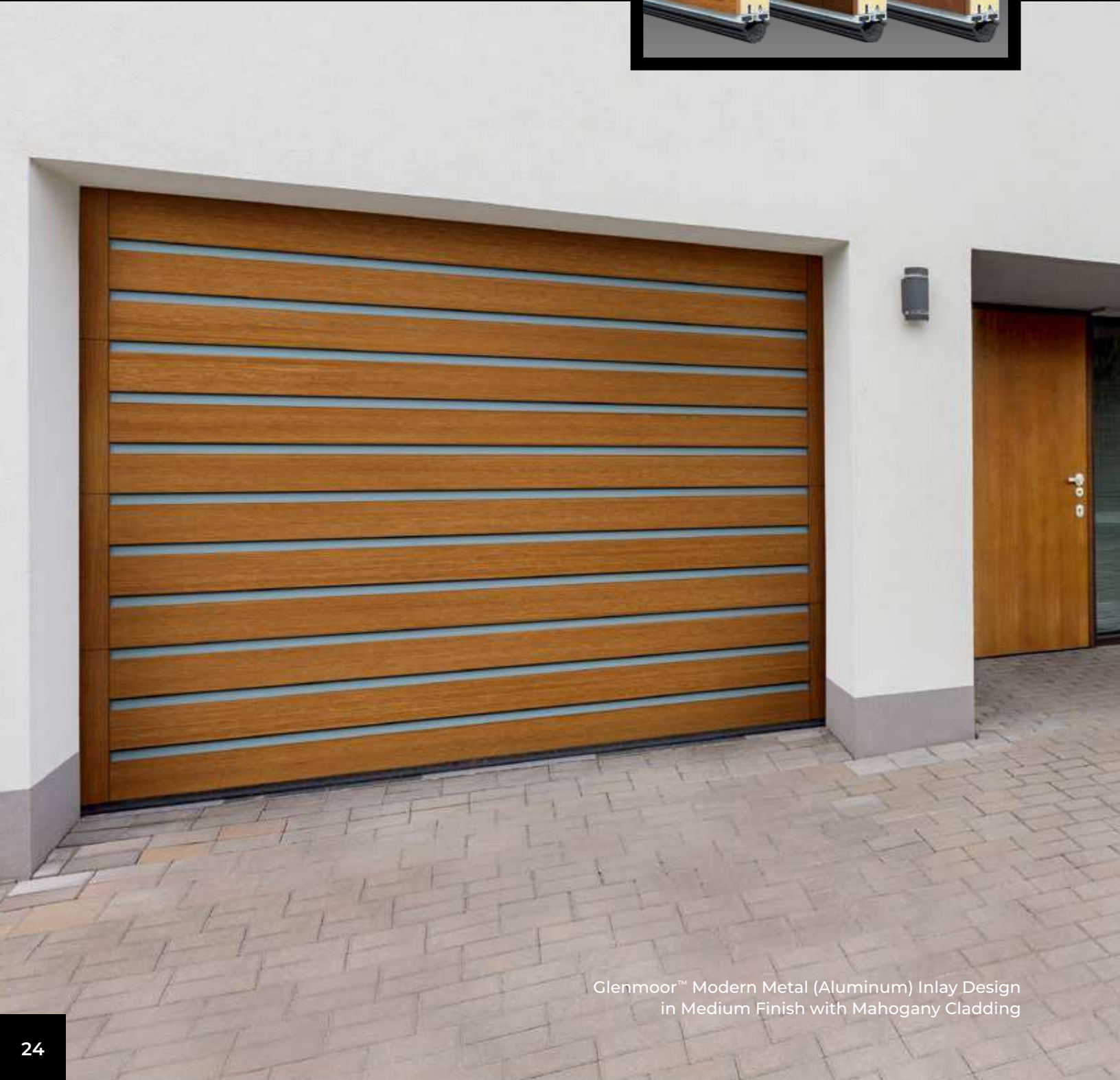


Steel surfaces have woodgrain texture. Doors can be ordered primed for those homeowners wishing to custom paint or stain their doors. Note: Primed solid steel base is a brown color. Door stain color will vary slightly within a door due to finishing process. Due to the printing process, colors may vary.

# GLENMOOR™ MODERN

A perfect complement to the natural materials and textures on your home's exterior.

## FOUR-LAYER CONSTRUCTION



Glenmoor™ Modern Metal (Aluminum) Inlay Design  
in Medium Finish with Mahogany Cladding

## CONSTRUCTION AND FINISH

- Three 4-layer designs to choose from:
  - Plank design steel faux wood doors with Intellicore® polyurethane insulation (20.4 R-value)
  - Steel faux wood doors combined with a Metal Inlay design and Intellicore® polyurethane insulation (18.4 R-value)
  - Full-View design steel faux wood doors with Intellicore® polyurethane insulation (6.3 R-value)
- Cladding and overlay options include Mahogany and Clear Cypress.
- Many glass options available including clear, frosted, rain and obscure as well as insulated.
- Premium grade hardware, rollers and track assure smooth, quiet, long-lasting operation.
- Factory finished in Natural, Medium, Dark, Walnut, Slate, Bronze, Charcoal, Espresso or Black Finish; doors can also be ordered in White Finish (Mahogany only) or primed for homeowners wishing to custom paint or stain their doors.

## WARRANTIES



## DECORATIVE HARDWARE

### INCLUDED



Spade Lift Handles

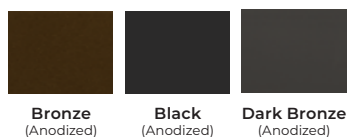
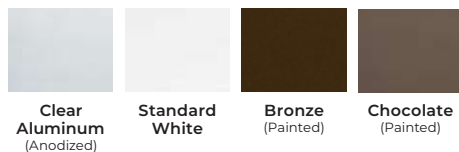


Spade Step Plate

### OPTIONAL



Aluminum Grip Handles



Due to the anodizing process, color variation may occur. The use of "Bronze (Painted)" is recommended for a more consistent bronze finish color. Custom colors available. Clear Aluminum complements the color of the Metal Inlay doors. Other colors are designed to complement design aspects of the home.

## DOOR DESIGNS



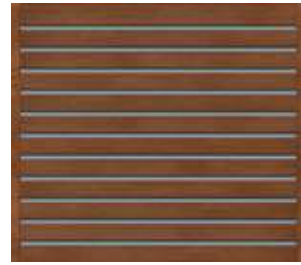
Plank Design



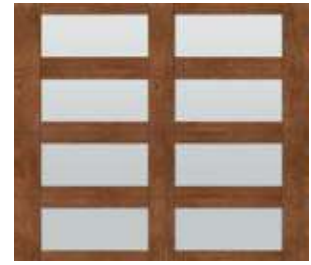
3" Plank



6" Plank



Metal (Aluminum) Inlay Design



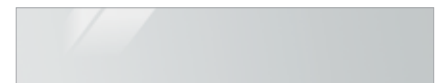
Full-View Design

## WINDOWS OPTIONS

Available only on Plank door designs.



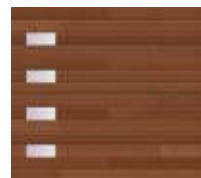
14" x 6"



35" x 6"

Both window sizes are available on single car and double car doors.

### PLANK WINDOW CONFIGURATIONS



14" x 6"

Windows down right side



35" x 6"

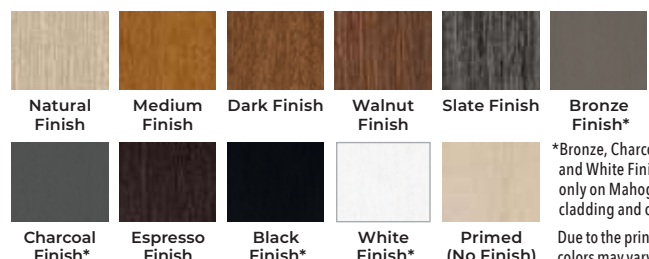
Windows in all panel locations

NOTE: Configurations are illustrated from outside garage. When ordering, window locations are identified from inside garage looking out. Please keep in mind to avoid windows ordered in incorrect location.

## MATERIAL DESIGN OPTIONS



## COLORS

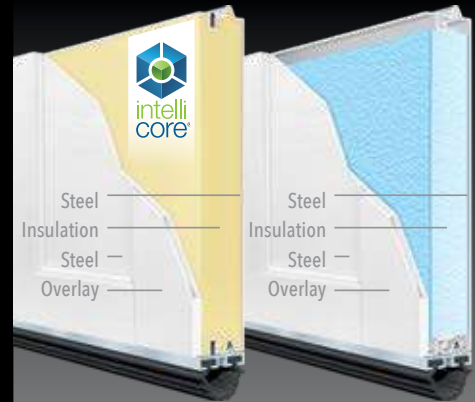


\*Bronze, Charcoal, Black and White Finish available only on Mahogany cladding and overlays. Due to the printing process, colors may vary. Doors can be ordered primed for those homeowners wishing to custom paint or stain their doors. Door stain color will vary slightly within a door due to finishing process.

# SETTLERS®

SETTLERS® doors provide a traditional carriage house appearance with upward-acting functionality and durable construction.

## FOUR-LAYER CONSTRUCTION



Polyurethane or Bonded Polystyrene Insulation



Settlers® SF13 in White with REC13 Windows

## CONSTRUCTION AND FINISH

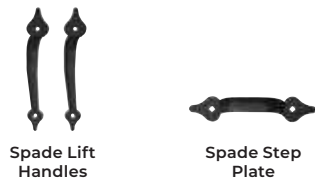
- Base door has a natural woodgrain texture, painted with a baked-on primer and polyester top coat.
- Detailed beveled, coped-edge overlay.
- Windows with complete overlay and true arch designs are available in double strength, frosted, seeded, obscure, rain and insulated glass. Grilles are removable for ease of cleaning.
- Includes automatic opener reinforcement.
- EZ-Set® torsion springs standard on most sizes.
- SXU models have 2" Intellicore® polyurethane insulation (18.4 R-value).
- SX models have 2" bonded polystyrene insulation (9.0 R-value).
- SF models have 1-3/8" bonded polystyrene insulation (6.5 R-value).
- For doors being painted black and very dark colors (having an LRV of 12 or less) contact Holmes for special product. For colors having an LRV of 13 to 38 we require the use of tested and approved paints. For more information call our Consumer Services Hotline at 1-800-557-0488.

## WARRANTIES

<b>PAINT SYSTEM</b> LIMITED WARRANTY <b>LIFETIME</b>	<b>WINDOW/OVERLAY DISCOLORATION</b> LIMITED WARRANTY <b>10 YEAR</b>	<b>OVERLAY DELAMINATION</b> LIMITED WARRANTY <b>5 YEAR</b>	<b>HARDWARE</b> LIMITED WARRANTY <b>5 YEAR</b>
--	---	--	--

## DECORATIVE HARDWARE

### INCLUDED

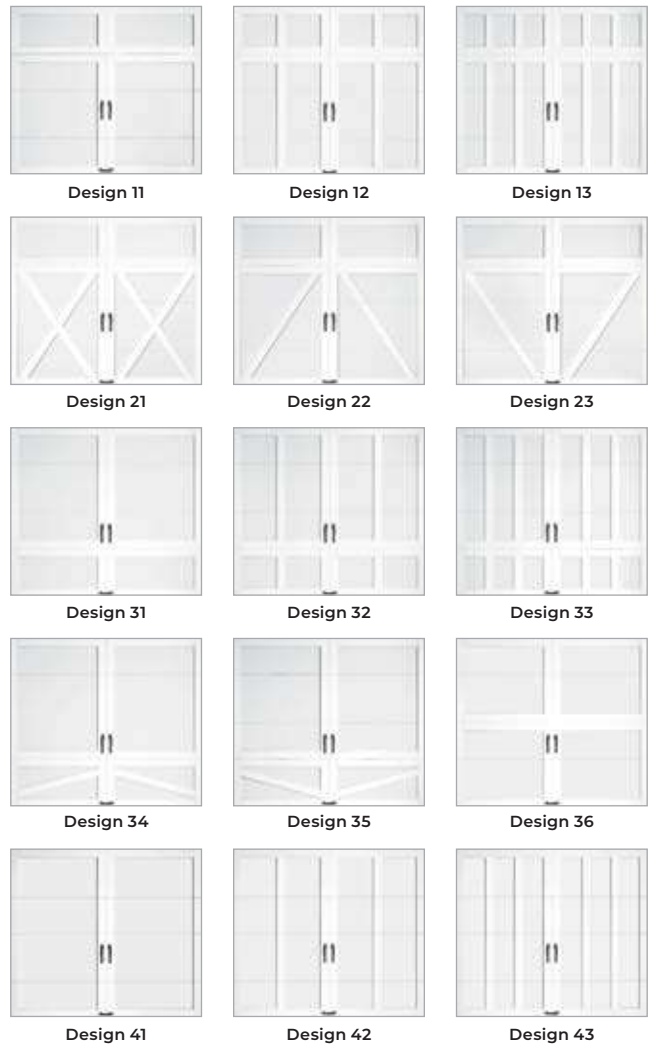


### OPTIONAL

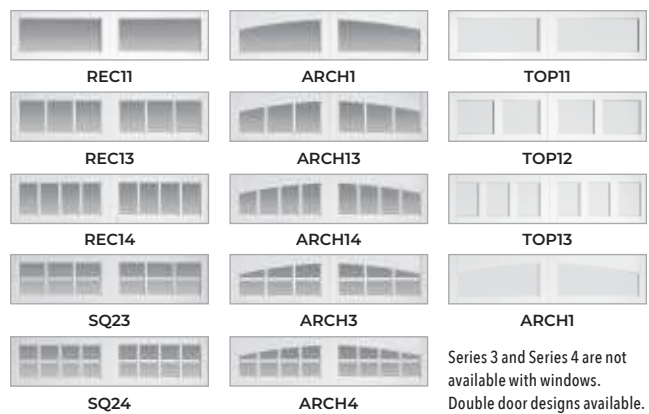


Additional hardware options are available; see pages 34-35.

## DOOR DESIGNS



## WINDOWS/TOP SECTION OPTIONS



## BASE DOOR/OVERLAY COLOR OPTIONS

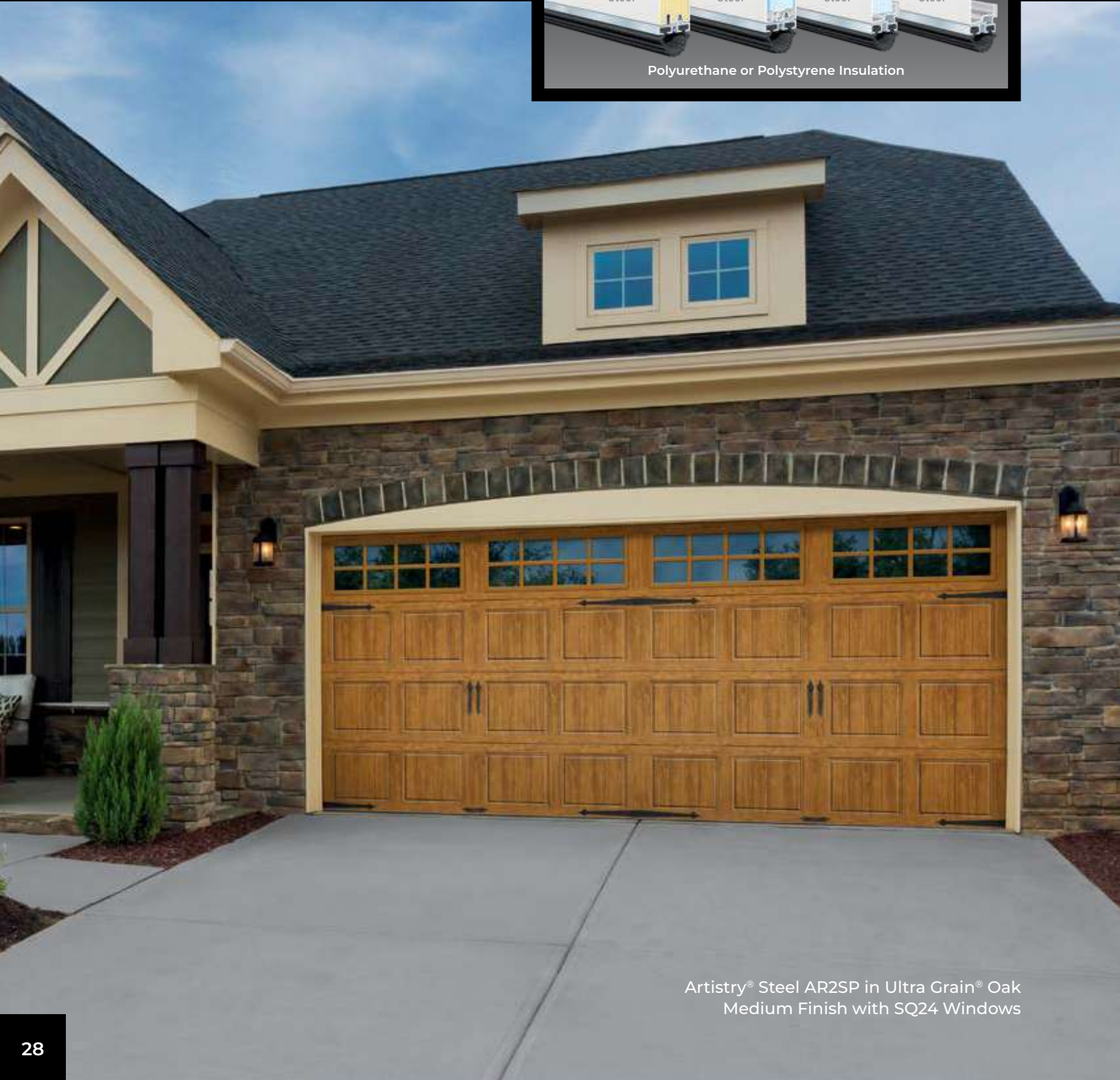
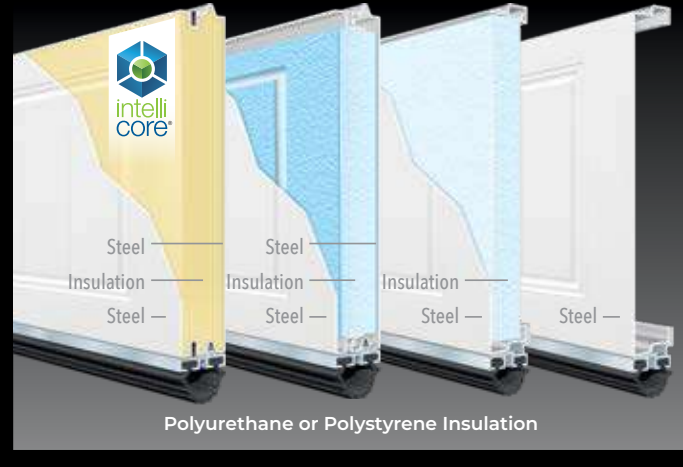


Note: Door and overlay colors can be mixed and matched. Due to the printing process, colors may vary.

# ARTISTRY® STEEL

ARTISTRY® STEEL doors create an authentic carriage house look at an affordable price.

## THREE, TWO & ONE-LAYER CONSTRUCTION



Artistry® Steel AR2SP in Ultra Grain® Oak Medium Finish with SQ24 Windows

## CONSTRUCTION AND FINISH

- Grooved-panel steel carriage house designs available in short and long-panel options.
- Available in 3, 2 or 1-layer construction options.
- Insulation options include 2" or 1-3/8" Intellicore® polyurethane, 2" or 1-3/8" bonded polystyrene or 1-5/16" vinyl backed polystyrene.
- Insulated door R-values range from 6.3 to 18.4.
- 17 factory finish paint colors available, including Almond, Black, Ultra-Grain® Oak Walnut Finish and more.
- Multiple glass options available including acrylic, insulated, midnight gray, frosted, seeded, rain and obscure options.
- The steel skins are protected by the use of a tough, layered coating system, which includes a hot-dipped galvanized layer and baked-on primer and top coat.
- Window grilles for easy cleaning.
- WindCode® reinforcement product available for high wind load applications.
- All models can be painted to match your home's exterior. Please visit <http://info.garagedoors.com/lrv> for paint instructions on Intellicore® insulation models.

## WARRANTIES

PAINT SYSTEM LIMITED WARRANTY	PAINT SYSTEM LIMITED WARRANTY	WINDOWS LIMITED WARRANTY	HARDWARE/SPRINGS LIMITED WARRANTY
<b>LIFETIME</b>	<b>15 YEAR</b>	<b>10 YEAR</b>	<b>3 YEAR</b>
AR2SU/AR2LU AR1SU/AR1LU AR2SP/AR2LP AR1SP/AR1LP AR4SV/AR4LV AR4S/AR4L	AR5SV/AR5S AR5LV/AR5L	ALL MODELS	ALL MODELS

## DECORATIVE HARDWARE

### INCLUDED



Spade Lift Handles



Spade Step Plate

### OPTIONAL



Spade Strap Hinge



Keylocks

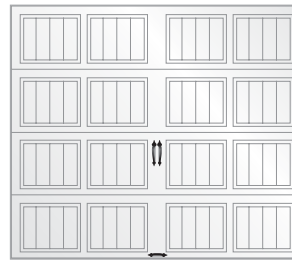


Escutcheon Plates

Additional hardware options are available; see pages 34-35.

## DOOR DESIGNS

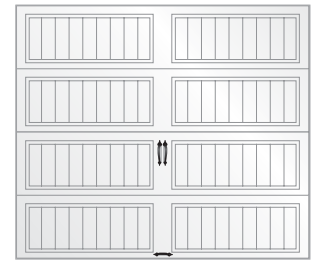
Single door width shown



**Three-Layer**  
AR2SU, AR1SU,  
AR2SP, AR1SP

**Two-Layer**  
AR4SV, AR5SV

**One-Layer**  
AR4S, AR5S



**Three-Layer**  
AR2LU, AR1LU,  
AR2LP, AR1LP

**Two-Layer**  
AR4LV, AR5LV

**One-Layer**  
AR4L, AR5L

## WINDOWS/TOP SECTION OPTIONS



Clear Short



REC12



SQ22



Clear Long



REC14



SQ24



ARCH1



Vertical Grille on ARCH1



Grille on ARCH1



ARCH2



Vertical Grille on ARCH2



Grille on ARCH2



Wrought Iron Short



Wrought Iron Long

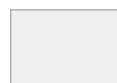


Wrought Iron Arch

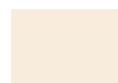
Double door designs available.

Acrylic windows require special cleaning. Never use products that contain ammonia or petroleum products to clean acrylic. Please visit [holmesgaragedoor.com/acrylic](http://holmesgaragedoor.com/acrylic) for complete details.

## COLOR OPTIONS



Standard White



Almond



Desert Tan



Sandtone



Bronze\*



Chocolate\*



Mocha Brown\*



Charcoal\*



Iron Ore\*



Black\*



Lustra™ Black\*



Lustra™ Charcoal\*



Lustra™ Silver\*

\*Not available on all models; contact customer service for availability. Due to the printing process, colors may vary.



Ultra-Grain® Oak Medium Finish\*



Ultra-Grain® Oak Dark Finish\*



Ultra-Grain® Oak Walnut Finish\*

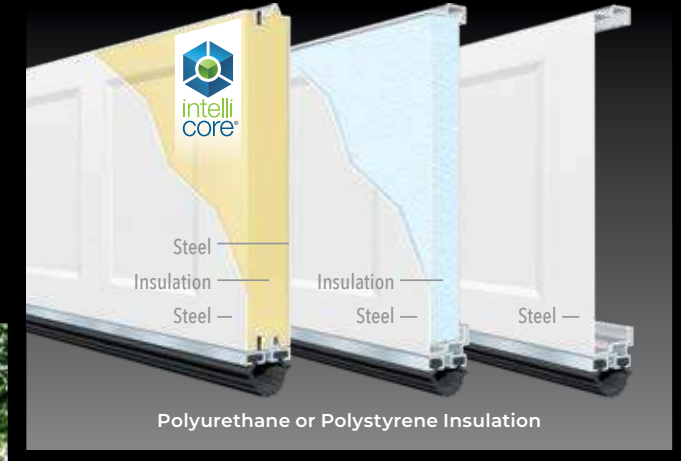


Ultra-Grain® Oak Slate Finish\*

# WESTPORT™ STEEL

WESTPORT™ STEEL doors combine the traditional symmetry of wood stile and rail door designs with the proven durability of steel construction.

## THREE, TWO & ONE-LAYER CONSTRUCTION



Westport™ Steel PR2NU in White with REC14 Windows

## CONSTRUCTION AND FINISH

- Recessed-panel steel designs available in narrow and extended-panel options.
- Available in 3, 2 or 1-layer construction options.
- Insulation options include 2" or 1-3/8" Intellicore® polyurethane or 1-5/16" vinyl backed polystyrene.
- Insulated door R-values range from 6.3 to 18.4.
- 17 factory finish paint colors available, including Almond, Black, Ultra-Grain® Oak Walnut Finish and more.
- Multiple glass options available including acrylic, insulated, midnight gray, frosted, seeded, rain and obscure options.
- The steel skins are protected by the use of a tough, layered coating system, which includes a hot-dipped galvanized layer and baked-on primer and top coat.
- Window grilles for easy cleaning.
- WindCode® reinforcement product available for high wind load applications.
- All models can be painted to match your home's exterior. Please visit <http://info.garagedoors.com/lrv> for paint instructions on Intellicore® insulation models.

## WARRANTIES

<b>PAINT SYSTEM</b> <b>LIMITED WARRANTY</b> <b>LIFETIME</b>	<b>PAINT SYSTEM</b> <b>LIMITED WARRANTY</b> <b>15 YEAR</b>	<b>WINDOWS</b> <b>LIMITED WARRANTY</b> <b>10 YEAR</b>	<b>HARDWARE/SPRINGS</b> <b>LIMITED WARRANTY</b> <b>3 YEAR</b>
PR2NU, PR2EU, PR1NU, PR1EU, PR4NV, PR4EV, PR4N, PR4E	PR5NV, PR5EV, PR5N, PR5E	ALL MODELS	ALL MODELS

## DECORATIVE HARDWARE

### INCLUDED



Color-Matched Lift Handles

### OPTIONAL



Spade Lift Handles



Spade Step Plate



Keylocks



Spade Strap Hinge



Escutcheon Plates

Additional hardware options are available; see pages 34-35.

## DOOR DESIGNS

Single door width shown



**Narrow Panel**

Three-Layer  
PR2NU, PR1NU  
Two-Layer  
PR4NV, PR5NV  
One-Layer  
PR4N, PR5N



**Extended Panel**

Three-Layer  
PR2EU, PR1EU  
Two-Layer  
PR4EV, PR5EV  
One-Layer  
PR4E, PR5E

## WINDOWS/TOP SECTION OPTIONS



Clear Short



REC12



SQ22



Clear Long



REC14



SQ24



ARCH1



Vertical Grille on ARCH1



Grille on ARCH1



ARCH2



Vertical Grille on ARCH2



Grille on ARCH2



Wrought Iron Short



Wrought Iron Long

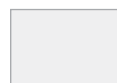


Wrought Iron Arch

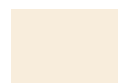
Double door designs available.

Acrylic windows require special cleaning. Never use products that contain ammonia or petroleum products to clean acrylic. Please visit [holmesgaragedoor.com/acrylic](http://holmesgaragedoor.com/acrylic) for complete details.

## COLOR OPTIONS



Standard White



Almond



Desert Tan



Sandtone



Bronze\*



Chocolate\*



Mocha Brown\*



Charcoal\*



Iron Ore\*



Black\*



Lustra™ Black\*



Lustra™ Charcoal\*



Lustra™ Silver\*

\*Not available on all models; contact customer service for availability. Due to the printing process, colors may vary.



Ultra-Grain® Oak Medium Finish\*



Ultra-Grain® Oak Dark Finish\*



Ultra-Grain® Oak Walnut Finish\*



Ultra-Grain® Oak Slate Finish\*

# LOGGEWOOD® SEMI-CUSTOM

LOGGEWOOD® SEMI-CUSTOM combines authentic wood designs with the functionality of an upward-acting sectional door.

## HANDCRAFTED TWO-LAYER CONSTRUCTION



Lodgewood® Semi-Custom Design 2 with SQ24 Windows

## CONSTRUCTION AND FINISH

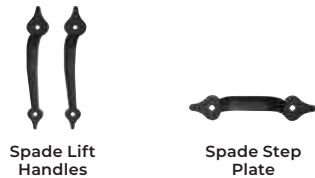
- Handcrafted, two-layer, non-insulated wood doors in authentic carriage house designs. Swing-out appearance — modern operation.
- Available in three wood species. All stain-grade wood rails, stiles and panels are made from Redwood, Cedar or Hemlock. Hemlock (paint grade and grooved) doors have Hemlock stiles and rails with exterior grade Extira® panels.
- 1/4" thick imported Luan interior backer glued to stiles and rails.
- True divided windows are standard with 1/8" DSB glass. Specialty glass options available.
- All doors can be factory primed or finish painted White. Factory stain available for stain-grade wood species (additional cost).

## WARRANTIES

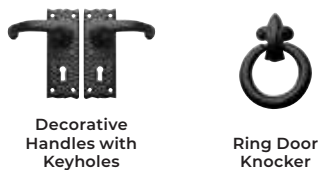


## DECORATIVE HARDWARE

### INCLUDED

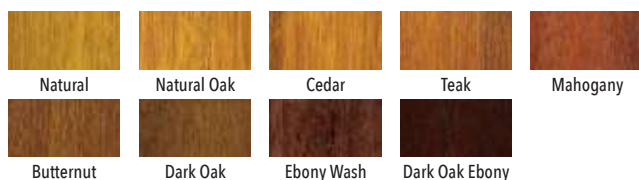


### OPTIONAL



Additional hardware options are available; see pages 34-35.

## OPTIONAL FACTORY STAINING\*



Not all wood types stain equally and all stain colors will vary in appearance on all wood types. Variations in color will occur from printed material to actual doors, or even from door to door. \*Additional cost.

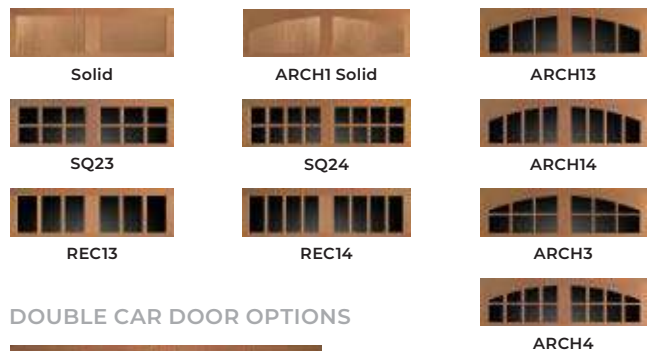
Proper care and maintenance are imperative to the appearance, longevity and performance of all wood doors. Doors must be painted or stained on all six sides prior to installation. Failure to follow the installation and maintenance instructions will void the warranty. Please refer to the installation and maintenance manual for additional information about caring for a wood door.

## DOOR DESIGNS

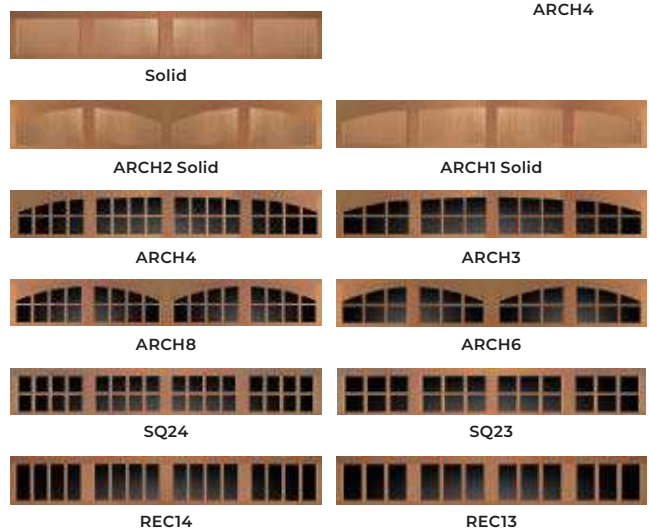


## WINDOWS/TOP SECTION OPTIONS

### SINGLE CAR DOOR WIDTHS



### DOUBLE CAR DOOR OPTIONS



## MATERIAL OPTIONS



Paint grade and grooved doors cannot be stained.

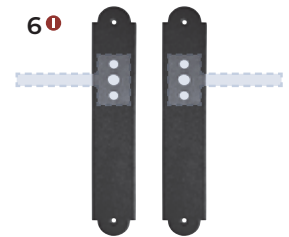
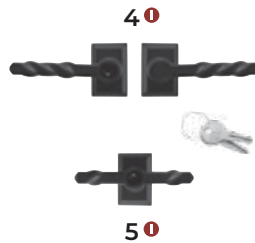


Hardware Description <i>Numbers below correspond with images on page 35</i>		Availability								
		CONTEMPORARY ALUMINUM / CONTEMPORARY ALUMINUM SLEEK	GLENMOOR™ CARRIAGE HOUSE 5-LAYER / 4-LAYER	GLENMOOR™ ELEMENTS	GLENMOOR™ CHEVRON	GLENMOOR™ LOUVER	GLENMOOR™ MODERN	SETTLERS™	ARTISTRY™ STEEL	WESTPORT™ STEEL
1	Spade Lift Handles		✓	✓	✓	✓	✓	✓	✓	✓
2	Spade Step Plate		✓	✓	✓	✓	✓	✓	✓	✓
3	Spade Strap Hinge*		✓	✓	✓	✓	✓	✓	✓	✓
4	Twisted "L" Handles		✓	✓	✓	✓	✓	✓	✓	✓
5	Twisted "T" Handle							✓	✓	
6	Escutcheon Plate(s)		✓	✓	✓	✓	✓	✓	✓	✓
7	Spear Lift Handles		✓	✓	✓	✓	✓	✓	✓	✓
8	Spear Step Plate		✓	✓	✓	✓	✓	✓	✓	✓
9	Spear Strap Hinge*		✓	✓	✓	✓	✓	✓	✓	✓
10	Colonial Lift Handles		✓	✓	✓	✓	✓	✓	✓	✓
11	Colonial Step Plate		✓	✓	✓	✓	✓	✓	✓	✓
12	Colonial Strap Hinge*		✓	✓	✓	✓	✓	✓	✓	✓
13	Decorative Handles with Keyhole		✓	✓	✓	✓	✓			✓
14	Ring Door Knocker		✓	✓	✓	✓	✓			✓
15	Aluminum Grip Handles	✓					✓			
16	Color-matched Lift Handles								✓	

\*Door may not open properly if installed near the top depending on opening dimensions and lift type.

# DECORATIVE HARDWARE

Attractive black powder coated handles and step plates are provided standard on select Holmes garage doors to further enhance the design of the door. Optional decorative hardware, including handles, operable L-keylocks and strap hinges, is also available.



*\*Complements Spade Lift Handles and Spade Step Plate.*

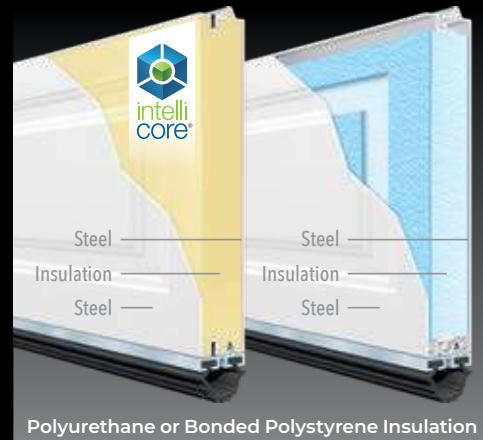


- Ⓢ = Steel Construction
- Ⓜ = Cast Iron Construction
- Ⓐ = Aluminum Construction
- Ⓟ = Color-matched Plastic Construction

# STANDARD STEEL GOLD

Three-layer construction provides maximum energy efficiency, the quietest operation and superior durability.

## THREE-LAYER CONSTRUCTION



7130 Standard Steel in White with Madison 611 Windows

## CONSTRUCTION AND FINISH

- Elegant raised and long panel designs for improved curb appeal.
- Three-layer construction provides maximum energy efficiency, the quietest operation and superior durability.
- Prefinished, stucco textured flush interior for beauty inside and out.
- 7200 and 7203 have 2" thick Intellicore® polyurethane insulation (18.4 R-value).
- 7130 and 7133 have 1-3/8" thick Intellicore® polyurethane insulation (12.9 R-value).
- 6200 and 6203 have 2" thick bonded polystyrene insulation (9.0 R-value).
- 6130 and 6133 have 1-3/8" thick bonded polystyrene insulation (6.5 R-value).
- All models can be painted to match your home's exterior. Please visit <http://info.garagedoors.com/lrv> for paint instructions on Intellicore® insulation models.

## DOOR DESIGNS



Elegant Raised Panel – Models 7200, 7130, 6200 and 6130



Elegant Long Panel – Models 7203, 7133, 6203 and 6133



Decorative panel edging and natural embossed woodgrain texture improve appearance close-up and from the curb.

## WARRANTIES



## COLOR OPTIONS



\* Not available on all models; contact customer service for availability.  
Due to the printing process, colors may vary.

## WINDOWS



Clear



Designer Inserts

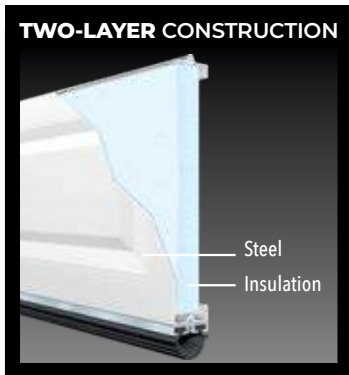


Architectural Series\*

\*Not available on Models 6130 and 6133.  
Additional window designs available;  
see pages 40-41.

# STANDARD STEEL SILVER & BRONZE

Residential garage doors are available with or without insulation.



## CONSTRUCTION AND FINISH

- Two-layer construction for energy efficiency and enhanced durability.
- Thick vinyl-backed polystyrene insulation for added energy efficiency.
- 5500 and 5503 have 1-5/16" thick polystyrene insulation (6.3 R-value).



## CONSTRUCTION AND FINISH

- One-layer steel construction is durable and economical.
- Traditional raised and long panel designs for improved curb appeal.
- Woodgrain textured short and long raised panel designs complement traditional home styles.

## DOOR STYLES



Traditional Raised Panel – Models 5500, 4200



Traditional Long Panel – Models 5503, 4203



Decorative panel edging and natural embossed woodgrain texture improve appearance close-up and from the curb.

## COLOR OPTIONS



Standard White Almond Desert Tan Sandtone Chocolate

Due to the printing process, colors may vary.

## WINDOWS



Clear



Designer Inserts

Additional window designs available; see pages 40-41.

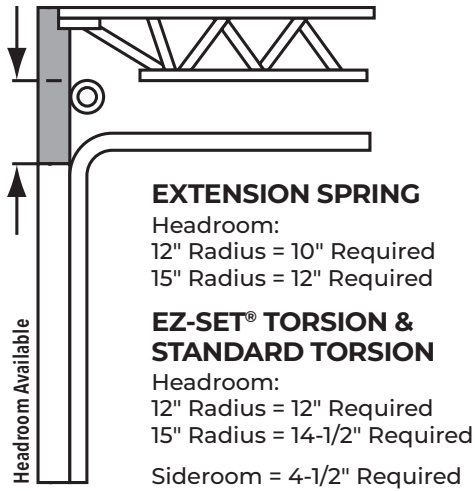
## WARRANTIES

PAINT SYSTEM LIMITED WARRANTY <b>25</b> YEAR 5500/5503	PAINT SYSTEM LIMITED WARRANTY <b>15</b> YEAR 4200/4203	WINDOW LIMITED WARRANTY <b>10</b> YEAR ALL MODELS	HARDWARE LIMITED WARRANTY <b>3</b> YEAR ALL MODELS
--	--	---	--

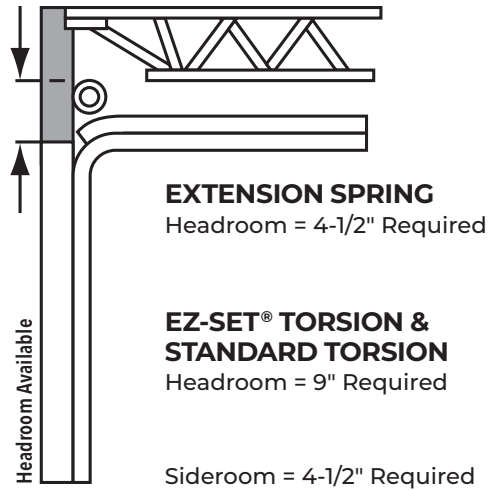
# RESIDENTIAL TRACK OPTIONS

Determine the right track option for your new residential garage door from the options below.

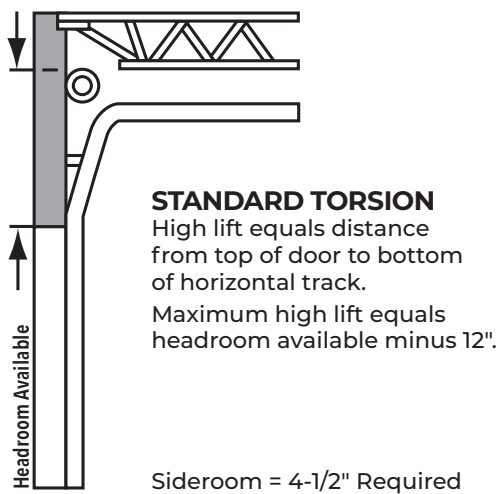
## STANDARD RADIUS



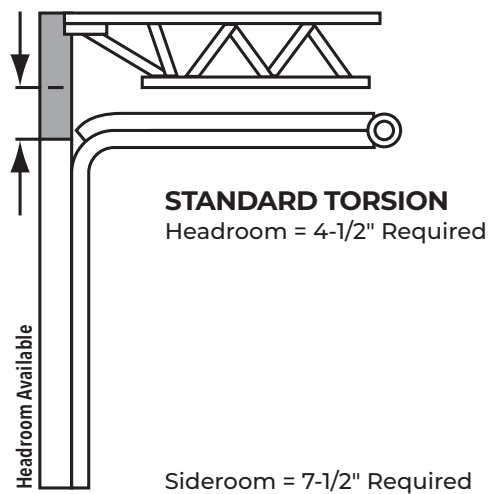
## LOW HEADROOM FRONT MOUNT



## HIGH LIFT



## LOW HEADROOM REAR MOUNT



Headroom = Top of door to nearest obstruction (truss, ceiling or light fixture).  
 Up to 3" of additional headroom may be required for a trolley door opener.

**NOTE:** Dimensions listed cover the most common applications on doors up to 8'0" high using 2" track.

# WINDOW SELECTION GUIDE

Add a personal touch with designer window lites.  
Available on Contemporary Steel, Standard Steel GOLD, SILVER and BRONZE.

## CLEAR

Single pane, double-strength glass.



Short



Long

## DESIGNER INSERTS

Dress up our clear windows with our UV-protected, color-matched Designer Inserts. They simply snap in over our clear window.



Charleston 508



Charleston 608



Colonial 509



Stockton 612



Sunset 502 (7', 7'6", 12' widths only)



Prairie 510



Prairie 610



Sunset 501 (8', 9', 12', 16', 17', 18', 20' widths only)



Madison 611



Sunset 503 (8', 9', 16', 17', 18' widths only)



Madison Arch 613



Sunset 504 (14', 15', 15'6" widths only)



Sunset 601



Sunset 505 (16', 17', 18' widths only)



Sunset 603



Sunset 506 (10', 20' widths only)



Sunset 605 (15', 16', 17', 18' widths, long panel doors only)

Designer Insert Series Windows are available on Contemporary Steel Models 7201, 7131, 6201, 6131 and all Standard Steel Gold, Silver and Bronze models.

# ARCHITECTURAL SERIES

For a larger viewing area, choose our Architectural Series options.



Clear Short



REC12



SQ22



Clear Long



REC14



SQ24



ARCH1



Vertical Grille on ARCH1



Grille on ARCH1



ARCH2



Vertical Grille on ARCH2



Grille on ARCH2



Wrought Iron Short\*



Wrought Iron Long\*



Wrought Iron Arch\*

\*Available non-insulated only.

Architectural Series Windows are not available on Contemporary Steel Model 6131, Standard Steel Gold Models 6130 and 6133, Standard Steel Silver or Bronze models.

Acrylic windows require special cleaning. Never use products that contain ammonia or petroleum products to clean acrylic. Please visit [holmesgaragedoor.com/acrylic](http://holmesgaragedoor.com/acrylic) for complete details.

# CONTEMPORARY SLIM

Contemporary Slim windows are designed to further enhance the clean aesthetic common to modern architecture. Contemporary Slim windows are 37" x 8" with aluminum frames available in powder coated silver or black.



378SV - Silver



378BK - Black

Available only on Contemporary Steel Models 7208, 7209, 6208 and 6209.

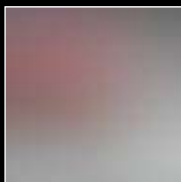
Glass is available in different designs depending on door model. Options include acrylic, clear, midnight gray, frosted, seeded, obscure and rain, as well as insulated versions for a more energy efficient door.



Clear



Midnight Gray



Frosted



Seeded



Obscure



Rain

See page 43 for specialty glass options.

# RESIDENTIAL GLASS OPTIONS

Glass is available in different designs depending on door model. Options include acrylic, clear, midnight gray, frosted, seeded, obscure, narrow reed and rain, as well as insulated versions for a more energy efficient door.



Clenmoor™ Carriage House  
5-Layer with Seeded Glass

**GLENMOOR™ AND SETTLERS®**



Frosted



Seeded



Obscure



Rain

**ARTISTRY® STEEL, WESTPORT™ STEEL AND STANDARD STEEL**



Midnight Gray



Frosted



Seeded



Obscure



Rain

**CONTEMPORARY STEEL**



Tempered Midnight Gray



Tempered Frosted



Tempered Obscure



Tempered Narrow Reed



Tempered Rain

**LODGEWOOD® SEMI-CUSTOM**



Frosted



Seeded



Obscure



Narrow Reed



Rain



Frosted Gluechip

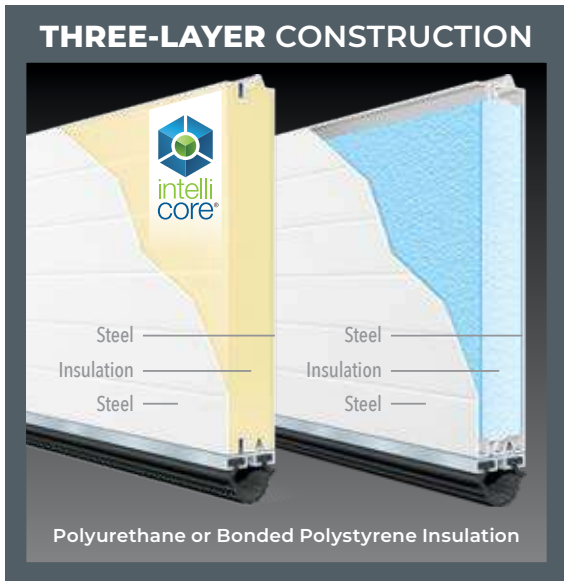


Delta Frost

Seeded not available on Glenmoor™ Modern, Standard Steel Silver and Standard Steel Bronze.  
Additional charges for optional glass apply.

# COMMERCIAL STEEL GOLD

Three-layer construction provides a durable, quiet and energy-efficient door for your commercial applications.



## DOOR STYLES

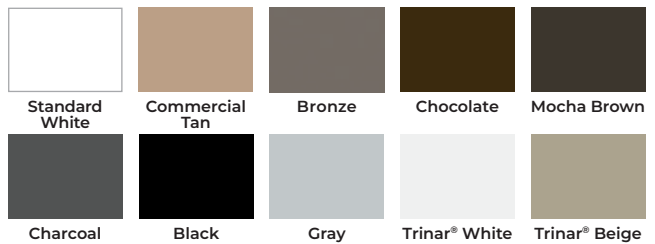


Holmes 240U, 240, 210U, 210 Shallow Ribbed Panel

## CONSTRUCTION AND FINISH

- 2" or 1-3/8" thick Intellicore® polyurethane insulation (18.4, 12.9 R-values, respectively).
- 2" or 1-3/8" thick bonded polystyrene insulation (9.0, 6.5 R-values, respectively).
- Insulation is pressure bonded between two layers of steel.
- Superior strength and durability.
- Maximum energy efficiency and quietest operation.
- Ribbed panel style and nine colors available.
- Commercial-duty rollers.
- Heavy-duty commercial track, hardware and springs.

## COLOR OPTIONS



Due to the printing process, colors may vary.  
Colors not available on all models; contact customer service for availability.

## WINDOWS



24" x 8"



24" x 12"



Full-Vision Section

See pages 40-41 for additional window availability.

# COMMERCIAL STEEL SILVER & BRONZE

Commercial ribbed doors are available with or without insulation.



## CONSTRUCTION AND FINISH

- 1-3/8" thick polystyrene insulation (6.6 R-value) is behind an exterior steel skin.
- Added energy efficiency.
- Commercial-duty rollers.
- Heavy-duty commercial track, hardware and springs.



## CONSTRUCTION AND FINISH

- Durable and economical steel construction.
- Commercial-duty rollers.
- Heavy-duty commercial track, hardware and springs.



## DOOR STYLES



Holmes 224V, 224S, 225V, 225S Deep Ribbed Panel



Holmes 224, 225 Deep Ribbed Panel

## COLOR OPTIONS



Due to the printing process, colors may vary.  
Colors not available on all models; contact customer service for availability.

## WINDOWS

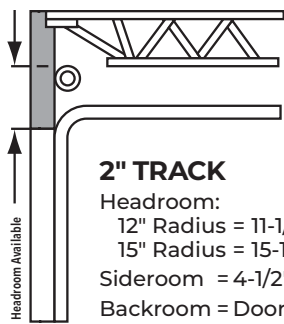


Full-Vision Section

# COMMERCIAL TRACK OPTIONS

Determine the right track option for your new commercial garage door from the options below.

## STANDARD RADIUS



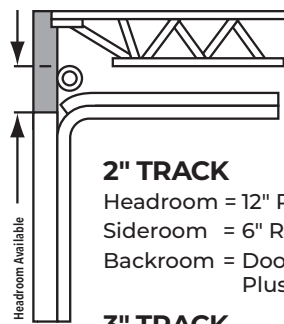
### 2" TRACK

Headroom:  
 12" Radius = 11-1/2" Required  
 15" Radius = 15-1/2" Required  
 Sideroom = 4-1/2" Required  
 Backroom = Door Height  
 Plus 23" Required

### 3" TRACK

Headroom = 16-1/2" Required  
 Sideroom = 5-1/2" Required  
 Backroom = Door Height  
 Plus 25" Required

## LOW HEADROOM FRONT MOUNT



### 2" TRACK

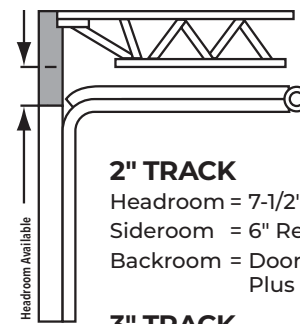
Headroom = 12" Required  
 Sideroom = 6" Required  
 Backroom = Door Height  
 Plus 23" Required

### 3" TRACK

Headroom = 14-1/2" Required  
 Sideroom = 6-1/2" Required  
 Backroom = Door Height  
 Plus 25" Required

(1,200 lb. limit on door weight)

## LOW HEADROOM REAR MOUNT



### 2" TRACK

Headroom = 7-1/2" Required  
 Sideroom = 6" Required  
 Backroom = Door Height  
 Plus 30" Required

### 3" TRACK

Headroom = 8-1/2" Required  
 Sideroom = 6-1/2" Required  
 Backroom = Door Height  
 Plus 32" Required

(800 lb. limit on door weight)

## VERTICAL LIFT



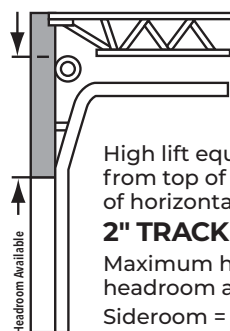
### 2" TRACK

Headroom = Door Height  
 Plus 12" Required  
 Sideroom = 4-1/2" Required  
 Backroom = 23" Required

### 3" TRACK

Headroom = Door Height  
 Plus 12" Required  
 Sideroom = 5-1/2" Required  
 Backroom = 23" Required

## HIGH LIFT



High lift equals distance from top of door to bottom of horizontal track.

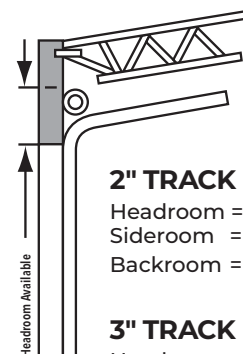
### 2" TRACK

Maximum high lift equals headroom available minus 12".  
 Sideroom = 4-1/2" Required

### 3" TRACK

Maximum high lift equals headroom available minus 14".  
 Sideroom = 5-1/2" Required  
 (Minimum high lift = 12" Required)

## ROOF PITCH



### 2" TRACK

Headroom = 17" Required  
 Sideroom = 4-1/2" Required  
 Backroom = Door Height  
 Plus 23" Required

### 3" TRACK

Headroom = 18-1/2" Required  
 Sideroom = 5-1/2" Required  
 Backroom = Door Height  
 Plus 25" Required

Headroom = Top of door to nearest obstruction (truss).

Dimensions listed cover the most common applications using standard hardware.

**NOTE:** Up to 4" of additional headroom may be required for a trolley door opener.

# ROLL-UP GARAGE DOORS



**Model 270H**

## GOLD

- Trucking Terminals
- Post Frame Buildings
- Light Industrial Warehousing
- Job Site Trailers
- Farm Machinery Storage Sheds
- Available in sizes 2'6" wide x 3'0" high through 12' wide x 14' high
- Door size should match rough opening\*

\*Door will arrive 7" - 8" wider than opening



**Model 260H**

## BRONZE

- Yard Barns
- Mini-Warehouses
- Storage Sheds
- Boat Houses
- Other light-duty applications
- Available in sizes 2'6" wide x 3'0" high through 12' wide x 14' high
- Door size should match rough opening\*

\*Door will arrive 2" - 4" wider than opening



### SILICONIZED POLYESTER PAINT\*

32 finishes complement any building

Bronze	Cedar Red	Continental Brown	Desert Sand	Desert Tan
High Gloss White	LG (Forest) Green	Light Stone	Sandstone	Satin White
Silhouette Gray	AG Galvalume	Colony Green	Charcoal Gray	Evergreen
Fern Green	Polar Blue	Royal Blue	Smart Blue	Sunset Orange
Teal	Ultra Marine Blue	Patriot Red	Sierra Sunset	Valentine Red
EXR Wasabi	Apple Lime Cocktail	Dark Teal	Maroon	Safety Yellow
LS Yellow	Coal Black			

\*Due to the printing process, colors may vary.

All colors are backed by a film integrity warranty for 40 years guaranteed to hold up against cracking, checking or peeling. In addition, these colors are guaranteed not to chalk or fade for 25 years.

# MEASURING FOR YOUR NEW DOOR

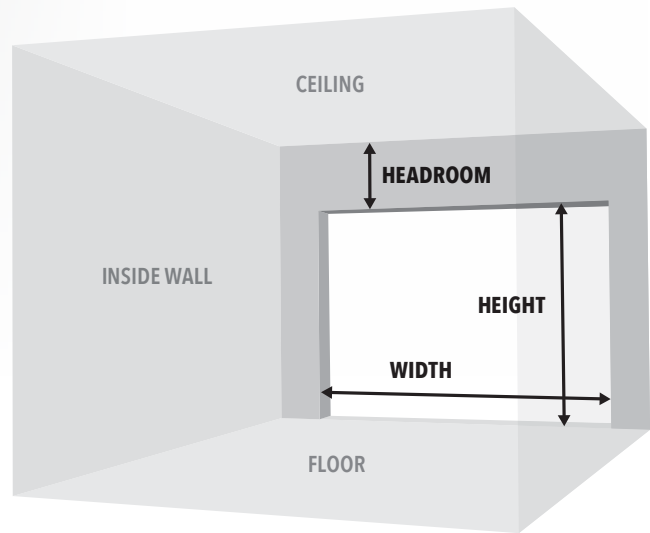
Measure existing door width and height in feet and inches. This determines the size of door needed. The rough opening should be the same size as the door.

**WIDTH:** \_\_\_\_\_ **HEIGHT:** \_\_\_\_\_

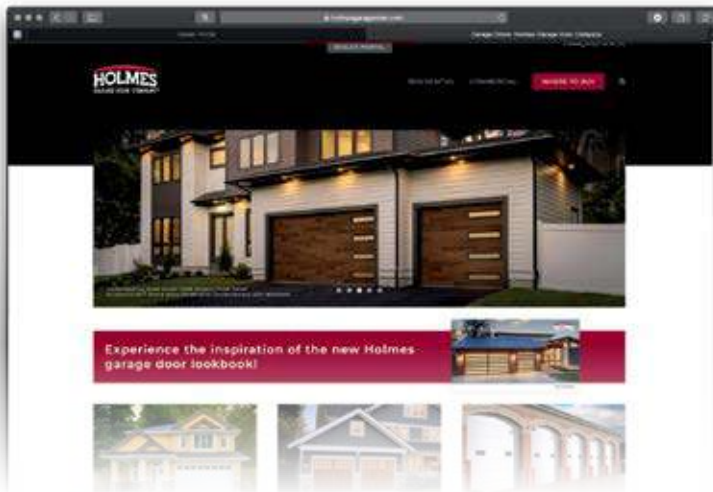
*Common garage door widths include 8', 9', 10' and 16'.  
Common garage door heights include 7' and 8'.*

Measure headroom as the distance between the top of the door and the ceiling (or first obstruction, e.g., light fixture).

**HEADROOM:** \_\_\_\_\_



## VISIT OUR WEBSITE



Visit today to order color samples, guidance on selecting the right door, installation instructions and information on maintaining your new Holmes garage door! Visit us at [www.holmesgaragedoor.com](http://www.holmesgaragedoor.com) or call the Holmes Helpline® at 800-557-0488

**HOLMES**  
GARAGE DOOR COMPANY®