

What We Do

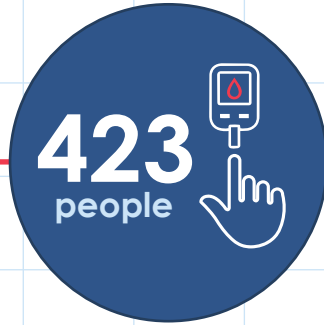
(Programs & Services)

1. Prevention & Early Detection



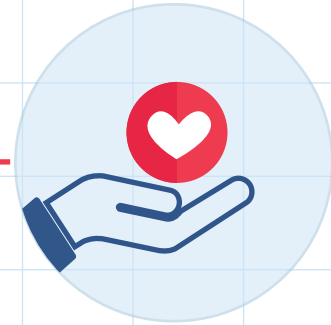
Screenings

Screenings for diabetes, pre-diabetes and blood pressure



423
people

were screened
in 2025



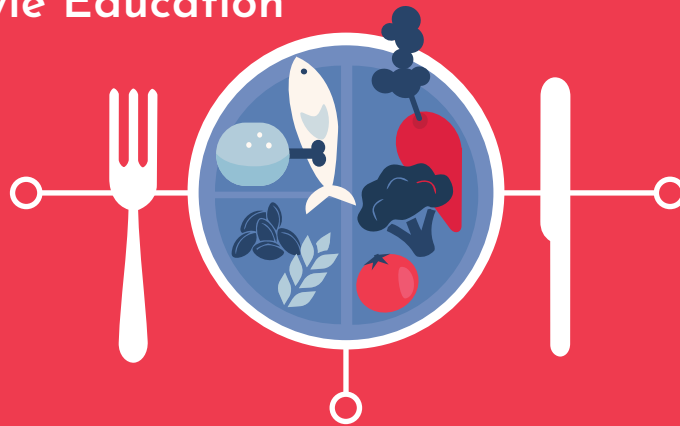
Community outreach

Through corporate events, public screenings, public education events, diabetes-support events etc.)

2. Healthy Lifestyle Education

Cooking & nutrition classes

(teaching kitchen + livestreams)



Affordable healthy food initiatives

(fruit & water stall at the Agriculture Show)

Focus

on nutrition, physical health, and mental wellbeing

3. Medication Support

(Know Your Medicine)



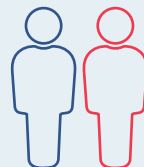
Free one-on-one medication reviews



Guidance on usage, side effects, and achieving the best value for money



GP follow-up support by the Pharmacist Educator



163

new participants

benefited from KYM

240



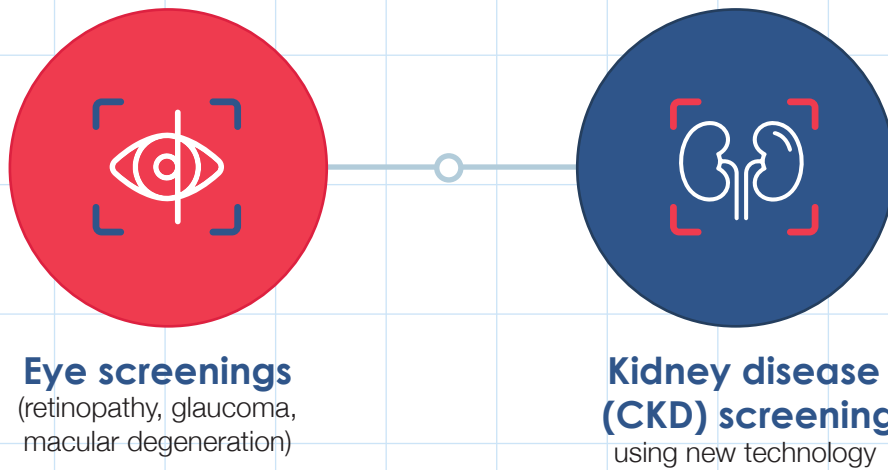
follow-up care
& management
appointments

helped individuals
improve their
health outcomes

4. Clinical Care & Support



5. Early Detection of Complications



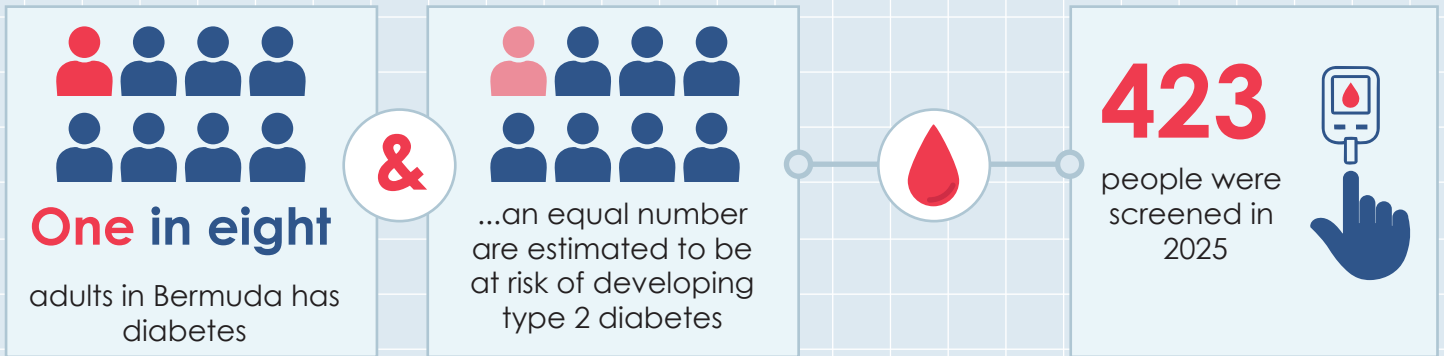
6. Access & Affordability



What We Achieve

(Impact & Outcomes)

1. Prevention Impact



2. Know Your Medicine (KYM) outcomes



improved their understanding of their medication, its use and purpose



of participants learned how to optimise their medication usage

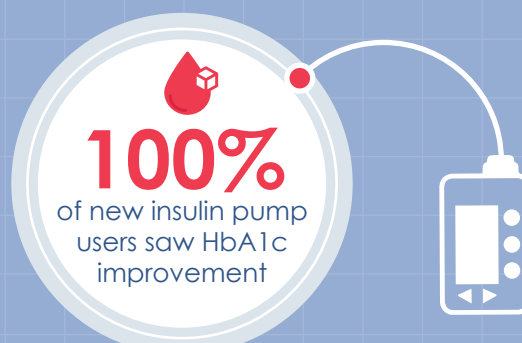


of participants who returned for follow-up, improved their blood pressure or HbA1c

3. Nutrition Therapy Outcomes



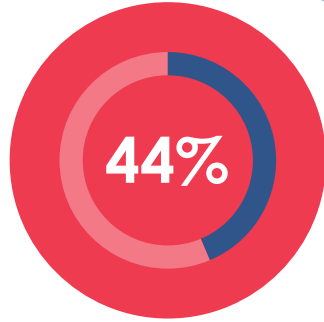
4. Diabetes Technology Outcomes



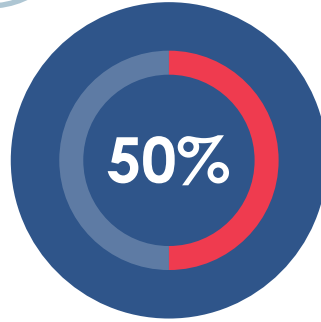
5. Eye Health Impact



screened in 2025



showed signs of eye conditions

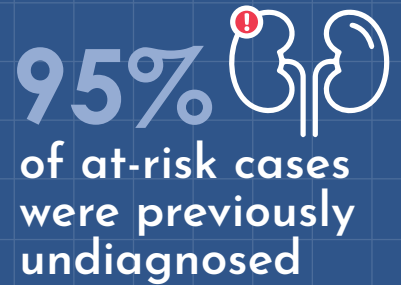
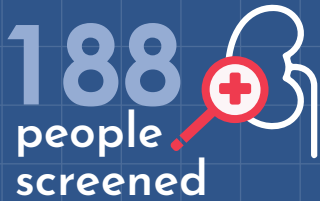


were identified as having high HbA1c ($\geq 7\%$)

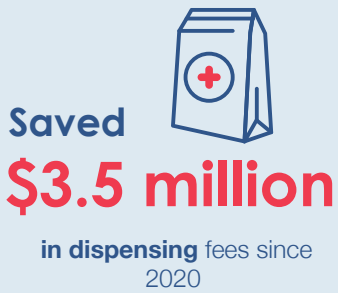


received funded treatment since 2023

6. Kidney Disease (CKD) Impact



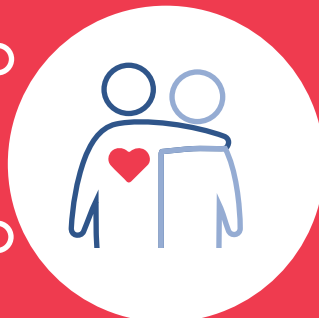
7. Access & Affordability Impact



8. Community & Support Impact

500+ views on first livestream cooking class

T1D youth gaining confidence through camp experiences



Ongoing Peer Support groups improving wellbeing and self-management