



Graver Technologies

FILTRATION | SEPARATION | PURIFICATION



Citadel® Series Filter Cartridges

*100% integrity tested to ensure
performance standards*

Product Specifications

Media: PTFE Membrane

Inner core, end caps, cage: PFA

Support layers:

FEP, Expanded PTFE

Gaskets/O-Rings:

Teflon Encapsulated Viton, FFKM

O-Ring Insert: PBT

Micron ratings:

0.05, 0.1, 0.2, 0.45, 1, 10 μm

Dimensions

Nominal lengths:

10" 20" 30" 40"

25.4 50.8 76.2 101.6 cm

Outside diameter: 2.7" (6.9 cm)

Inside diameter: 1.0" (2.54 cm)

Surface area: 7.9 ft² (0.71 m²)
per 10-inch

Operating Parameters

Maximum differential pressure:

80 psid (5.5 bar) @ 24°C (75°F)

55 psid (3.8 bar) @ 75°C (167°F)

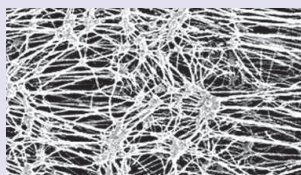
30 psid (2.0 bar) @ 125°C (257°F)

15 psid (1.0 bar) @ 150°C (300°F)

Maximum reverse pressure:

50 psid (3.4 bar) @ 24°C (75°F)

15 psid (1.0 bar) @ 121°C (250°F)



ALL-FLUOROPOLYMER CARTRIDGE FILTERS FOR AGGRESSIVE APPLICATIONS

Citadel pleated membrane cartridges feature a PTFE membrane and PFA structural components to provide excellent chemical and temperature resistance for aggressive chemical applications such as etchers, strippers, cleaners and bulk chemicals. The all- fluoropolymer construction provides for the highest level of fluid purity and will exhibit rapid rinse-up to 18 M Ω -cm resistivity and single digit ppb levels of TOC. Citadel filter cartridges are produced and manufactured in an ISO cleanroom and are 100% integrity tested to ensure performance standards.

FEATURES & BENEFITS

- Manufactured, flushed, tested and packaged in an ISO Class 7 Cleanroom Environment
- Filters are flushed with 18 M Ω -cm DI water to ensure low extractables and low particle shedding
- 100% integrity tested to provide reliable performance
- Resistivity rinse-up to 18 M Ω -cm and single digit ppb TOC levels with minimal throughput
- Pore size ratings from 0.05 to 10 micron to meet a broad range of applications
- Wet-Pack option available to eliminate the requirement for solvent pre-wetting in aqueous applications

CERTIFICATIONS

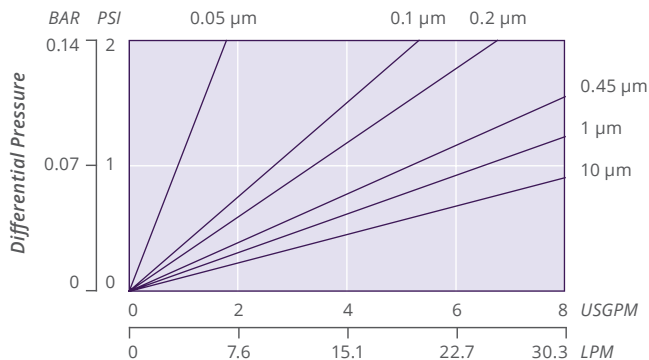
- USP Class VI: Meets USP Class VI Biological Test for Plastics
- FDA Listed Materials: All materials comply with FDA Title 21 of the Code of Federal Regulations Sections 174.5, 177.1550, and 177.2600 as applicable for food and beverage contact.
- European Directive for Food Contact: European Regulation No. 1935/2004 and European Regulation 10/2011 with amendments and corrections from European Reg No 2020/1245: Tested for migration behavior and is suitable for contact with all kinds of foodstuffs with minimal rinse-up. Data available upon request.

CITADEL NOMENCLATURE INFORMATION

Filter Type	Retention Rating (microns)		Nominal Length (inches)	End Configuration	Gasket or O-Ring	Option
Citadel Series Filters	0.05	0.45	–10	P2 226/Flat Single Open End	C FFKM	–W Pre-Wet
	0.1	1	–20	P3 222/Flat Single Open End	T Teflon encap. Viton (Standard)	
	0.2	10	–30		N No O-Ring	
			–40			
Example: CTL 0.05–20P3T–W						
CTL	0.05		–20	P3	T	–W

CITADEL FLOW RATE

Typical Flow Rate Clean Water at Ambient Temperature
(per 10" cartridge)



RINSE-UP VOLUMES

Resistivity rinse-up to 18 MΩ-cm	< 5 liters
Particle cleanliness	< 10 particles/mL > 0.1 µm
Extractable levels	< 25 ppb total in 5% HCl

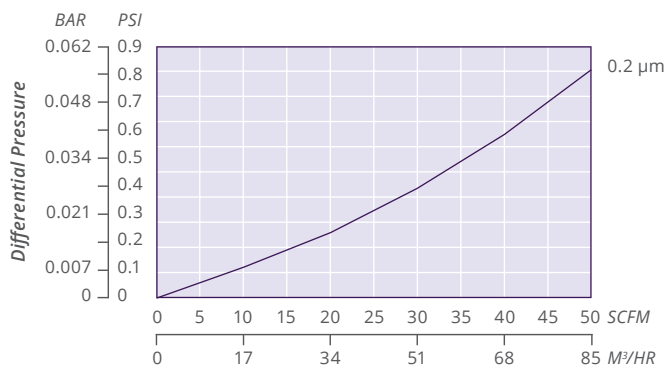
INTEGRITY TEST SPECIFICATIONS

Maximum Diffusive Air Flow (per 10-inch cartridge) values for Citadel filters wet with 60/40 IPA/water:

Pore Size	Specification
0.05 µm	≤ 90 cc/min @ 22 psig (1.5 bar)
0.1 µm	≤ 50 cc/min @ 18 psig (1.2 bar)
0.2 µm	≤ 50 cc/min @ 12 psig (0.8 bar)
0.45 µm	≤ 50 cc/min @ 5 psig (0.34 bar)
1 µm	≤ 50 cc/min @ 3 psig (0.2 bar)
10 µm	N/A

CITADEL AIR FLOW RATE

Air Flow Rate (per 10" cartridge)



Test conditions: System Pressure at 40 PSIG, 65F (18C) outlet open to atmosphere

FOR MORE INFORMATION

GTX-345 9-25

DISTRIBUTED BY

Customer Service/Technical Support: 1-888-353-0303

China: +86-21-5238-6576 Asia: +65-9671-9966

All information and recommendations appearing in this bulletin concerning the use of products described herein are based on tests believed to be reliable. However, it is the user's responsibility to determine the suitability for his own use of such products. Since the actual use by others is beyond our control, no guarantee, expressed or implied, is made by Graver Technologies as to the effects of such use or the results to be obtained. Graver Technologies assumes no liability arising out of the use by others of such products. Nor is the information herein to be construed as absolutely complete, since additional information may be necessary or desirable when particular or exceptional conditions or circumstances exist or because of applicable laws or government regulations. Citadel is a trademark of Graver Technologies, LLC.



Graver Technologies | 302-731-1700 | 800-249-1990
info@gravertech.com | www.gravertech.com

A member of The Marmon Group—A Berkshire Hathaway Company