



ZTEC™ B Series Filter Cartridges

Pleated TECpore™ Polyethersulfone (PES) Membrane for Bioburden Reduction

ZTEC B Bioburden Reduction grade membrane cartridges provide highly consistent performance for bioburden reduction and particle removal across a wide range of beverage, pharmaceutical and biological fluids. The naturally hydrophilic TECpore PES membrane filters provide exceptional flow rates, long on-stream life, broad chemical compatibility and have no added surfactants to contribute to extractables. The cartridges are integrity testable and steamable to assure reliable service in critical applications.

Product Specifications

Media: TECpore Asymmetric Polyethersulfone Membrane

Inner core, end caps, cage: Polypropylene

Support layers: Spunbonded Polypropylene

Gaskets/O-Rings:

Buna-N, EPDM, Silicone, Teflon Encapsulated Viton (O-Rings only), Teflon (gaskets), Viton

O-Ring Insert: PBT

Micron ratings: 0.2, 0.45, 0.65 μm

Dimensions

Nominal lengths:

9.75" 10" 20" 30" 40"
24.8 25.4 50.8 76.2 101.6 cm

Outside diameter: 2.7" (6.9 cm)

Inside diameter: 1.0" (2.54 cm)

Surface area: 7.6 ft² (0.7 m²)
per 10" element

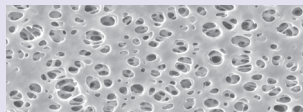
Operating Parameters

Maximum sustained operating temperature:
176°F (80°C) at 20 psid (1.38 bar)

Maximum differential pressure:
80 psid @ 70°F (5.5 bar @ 21°C)
40 psid @ 160°F (2.8 bar @ 71°C)

Maximum reverse differential pressure:
40 psid @ 70°F (2.8 bar @ 21°C)

Recommended change-out pressure:
35 psid (2.4 bar)



FEATURES & BENEFITS

- Manufactured with Graver Technologies' high performance TECpore PES membrane in an ISO Class 7 Cleanroom Environment
- 100% flushed with ultrapure DI water and integrity tested
- Repeatably steamable/sanitizable
- High retentions up to 10⁷/cm² challenged for bacteria and yeast
- Pore size, lot and serial number are stamped on each filter element for identification and traceability
- Complete qualification guide available
- Every cartridge comes standard with an embedded O-ring support ring

CERTIFICATIONS

- USP Class VI: Meets USP Class VI Biological Test for Plastics
- FDA Listed Materials: All materials comply with FDA Title 21 of the Code of Federal Regulations Sections 174.5, 177.1520 (polypropylene), 177.2440 (PES Resin) and 177.2600 (rubber) as applicable for food and beverage contact.
- European Directive for Food Contact: European Regulation No. 1935/2004 and European Regulation 10/2011 with amendments and corrections from European reg No2020/1245: Tested for migration behavior and is suitable for contact with all kinds of foodstuffs with minimal rinse-up. Data available upon request.

TYPICAL APPLICATIONS

- Bottled Water
- Ophthalmic Solutions
- Culture Media
- Reagent Chemicals
- LVPs
- Biopharmaceuticals
- Buffers
- Juices

PERFORMANCE SPECIFICATIONS

- Hot DI Water: Filter cartridge will withstand temperatures of 185°F (85°C) for up to 30 consecutive minutes.
- Cleaning/Sanitization: Compatible with most common chemical cleaning, sanitizing and sterilizing agents and with pH range from 1-14. Consult factory for specific compatibility information.
- Steam/Autoclave: Cartridges may be steamed or autoclaved for at least 50 thirty-minute cycles @ 275°F (135°C).

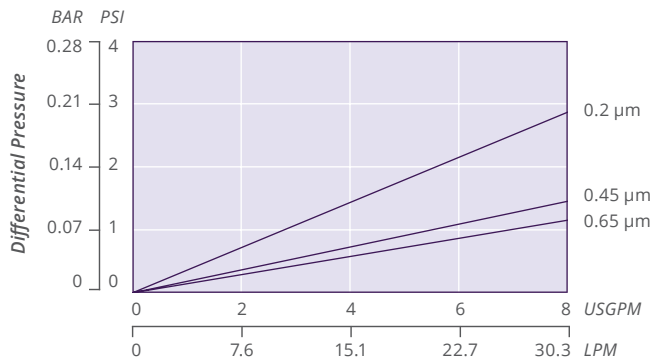
ZTEC B NOMENCLATURE INFORMATION

Filter Type	Retention Rating (microns)	Nominal Length (inches)	End Configuration	Gasket or O-Ring
ZTEC B Series	0.2	-5 -20	P Double Open End	B Buna-N
	0.45	-9.75*	P2 226/Flat Single Open End	E EPDM
	0.65	-10 -40	P3 222/Flat Single Open End	S Silicone
			P7 226/Fin Single Open End	T Teflon encap. Viton (O-Rings only)
			P8 222/Fin Single Open End	T Teflon (gaskets)
			P28 222 w/3 tabs/Fin Single Open End	V Viton
			AM Single Open End, Internal O-Ring	
			NPC Double Open End, Internal O-Ring	
Example: ZTEC B 0.2-20P2E				
ZTEC B	0.2	-20	P2	E

*Available only for DOE (P) configuration

ZTEC B FLOW RATE

Typical Flow Rate Clean Water at Ambient Temperature
(per 10" cartridge)



For liquids other than water, multiply pressure drop by the fluid viscosity in centipoise



INTEGRITY TEST SPECIFICATIONS

Minimum Bubble Point values and maximum Diffusive Air Flow (per 10-inch cartridge) values for ZTEC B filters wet with water:

Pore Size	Bubble Point	Diffusive Air Flow
0.2 µm	≥ 38 psig (2.8 bar)	≤ 35 cc/min @ 30 psig (2.0 bar)
0.45 µm	≥ 25 psig (1.7 bar)	≤ 35 cc/min @ 20 psig (1.4 bar)
0.65 µm	≥ 18 psig (1.2 bar)	≤ 35 cc/min @ 15 psig (1.0 bar)

TYPICAL BACTERIAL RETENTION

0.2 µm	LRV for <i>B. diminuta</i> ≥ 7.2
0.45 µm	LRV for <i>S. marcescens</i> ≥ 7.1
0.65 µm	LRV for <i>S. cerevisiae</i> ≥ 11

FOR MORE INFORMATION

Customer Service/Technical Support: 1-888-353-0303

China: +86-21-5238-6576 Asia: +65-9671-9966

GTX-296 5-25

DISTRIBUTED BY

All information and recommendations appearing in this bulletin concerning the use of products described herein are based on tests believe to be reliable. However, it is the user's responsibility to determine the suitability for his own use of such products. Since the actual use by others is beyond our control, no guarantee, expressed or implied, is made by Graver Technologies as to the effects of such use or the results to be obtained. Graver Technologies assumes no liability arising out of the use by others of such products. Nor is the information herein to be construed as absolutely complete, since additional information may be necessary or desirable when particular or exceptional conditions or circumstances exist or because of applicable laws or government regulations. ZTEC and TECpore are both trademarks of Graver Technologies, LLC.



Graver Technologies | 200 Lake Drive, Glasgow, DE 19702 | 1-302-731-1700 | 800-249-1990
Fax: 1-302-369-0938 | info@gravertech.com | www.gravertech.com

A member of The Marmon Group—A Berkshire Hathaway Company