

EAST  
QUAY

Open Call  
Outdoor Furniture Commission

contains

# Contents

- 1 About East Quay**
- 2 Commission Overview**
- 3 Commission Site Images**
- 4 Design Specifications and Site Requirements**
- 5 Commission Site Overview**
- 6 Commission Site Floor Plans**
- 7 To Apply**
- 8 Equal Opportunities**

# About East Quay

East Quay is an arts venue which opened in September 2021 in the harbour town of Watchet, West Somerset. It is home to two contemporary art galleries, nine artist studios, a project space, a paper mill, a geology workshop, a print studio, a bookshop, an education space, a restaurant, and five unique accommodation pods, all overlooking the town's quayside on Somerset's beautiful coast.

East Quay is managed by Onion Collective CIC, a Somerset-grown, female-led, not-for-profit social enterprise, illustrating that when people have the space and time to imagine collectively, the results can be creative, welcoming, ambitious, and fun.

The galleries at East Quay are managed by Contains Art CIO (charity number 1193931) and are founded on the belief that who you are, where you live and what you have should not constrain access to creativity and culture.

Since opening in 2021, East Quay has showcased exhibitions and artworks by a range of artists, including: Jo Lathwood, Serena Korda, Jake Elwes, Lyn Barlow, Grayson Perry, Peter Liversidge, Laura Ford, Bedwyr Williams and many more!

In 2022, Contains Art was awarded NPO status by Arts Council England, with its purpose being to raise ideas, open minds, invite discussion, and encourage a social, economic, and environmental conversation through culture. As part of this, we offer a range of opportunities to creative practitioners working in different fields, with the aim of building conversations about the important role of art and culture within communities in Somerset and beyond.



# Commission Overview

East Quay is inviting proposals from architects, craftspeople, artists and designers to create a new piece of outdoor furniture for our unique building in Watchet, West Somerset. The furniture will be installed on the terrace outside one of our bespoke accommodation Pods, offering a place for guests and members of the public to sit and soak up the coastal atmosphere .

Designed by PEARCE+Faegen, each of our five accommodation Pods has its own concept and story, reflecting the town, its culture, heritage, and future. This commission is for the space outside Pod 3, our 'Romantic Industrial' pod, which is situated on a platform above the second floor of East Quay.

## **Commission fee**

East Quay is offering a fee of £3,000 (inclusive of VAT) for the commission, to support development, build and delivery. The fee is intended to cover all expenses associated with realising the project, including research time, development, materials, fabrication, transportation and on-site installation of the furniture.

## **Travel budget and accommodation offer**

The selected applicant will receive a £300 contribution towards travel expenses to be used during the course of the project, along with the offer to stay in one of our accommodation pods for two nights while the furniture is being installed (dates tbc).

## **Commission delivery**

It is the responsibility of the selected maker to deliver the furniture to East Quay and take the lead with installing the structure. Our team will be available to assist if needed.

## **Eligibility**

This opportunity is open to architects, craftspeople, artists and designers. Previous experience of working with outdoor sculpture/in public spaces is beneficial, but not essential. We welcome collaborative proposals, however, the commission fee will remain the same.

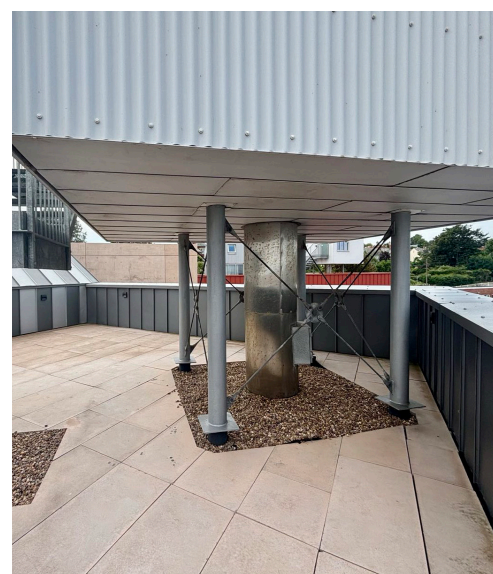
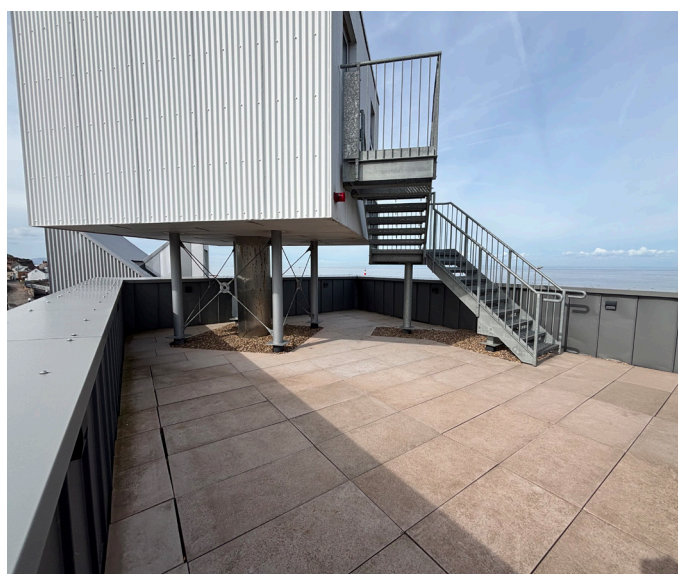
## **Application deadline**

Friday 30th January 2026, at 5pm

## Commission Site Images

The images below show Pod 3 and the surrounding area, where the furniture commission will be installed.

Pod 3 is perched at the highest point of East Quay and offers unparalleled views across the harbour and out over the Bristol Channel. It is a split-level studio that takes inspiration from Watchet's industrial past as a hard-working maritime town, with a rich history of paper-making. It sleeps two people and boasts a bathtub on the mezzanine floor, with dramatic views stretching out across the sea.



# Design Specifications and Site Requirements

## Design Specifications

- The furniture must comfortably accommodate a minimum of two people, however, you may wish to consider designing a larger-scale piece.
- The design must actively consider the surrounding environment and the varied audiences who will be interacting with the furniture on a regular basis.
- The design should be fun, playful and eye-catching.
- We are also interested in receiving ideas which consider creative ways of reusing/recycling materials. For example, you could consider using locally-sourced materials, or reflect on the historic use of materials in this area.
- The furniture should take into account a range of access needs (you may wish to incorporate elements such as backs or arms into the design), notwithstanding the fact that in order to reach Pod 3, visitors are required to use external stairs.
- We welcome proposals which echo existing architectural features of the building, but are also keen to review designs which use a different visual language, be that through colour, form, materiality etc.

## Site Requirements and Health & safety

- The furniture will need to be made safe and secure, ensuring it cannot be moved by members of the public.
- The furniture cannot be built next to the outer parapet that surrounds the commission site, as somebody might climb on it, jump or fall.
- The furniture design must prioritise the safety and security of passers-by, taking into account the headspace requirements underneath Pod 3. The height from the floor to the bottom of Pod 3 is approximately 2000mm, and from the floor to the bottom of the external staircase is approx 1470mm (see images on Page 3 for reference).
- Please note: Access to the site is via an external metal staircase. It is therefore essential that the furniture can be safely manoeuvred to the site (for example, it could be built in detachable sections) and feasibly constructed in-situ.
- The materials used to create the furniture must be durable and able to withstand the very strong coastal winds we experience here in Watchet (especially during winter months).
- The furniture must be easy to keep clean, litter-free and maintained in a good condition. Details on how the furniture should be maintained must be included within the submission.
- The design should be created with the intention of remaining in-situ for at least two years.
- Details of installation requirements should be included as part of the submission.
- A Risk Assessment and Method Statement (RAMS) will be required prior to installation.

## Additional Considerations

- The RAMS guidance will be checked by a member of the East Quay team before approval is given to progress with the commission.
- Upon delivery, the furniture will be checked by the East Quay Team alongside the maker, to ensure it is safe for installation and public use.
- The commissioned maker may be asked to make modifications if required, and the final sign-off of the furniture will be the responsibility of the East Quay Team.

## Commission Site Overview



Above: Pod 3 interior



Above left: The view from the boatyard, looking up towards Pod 3



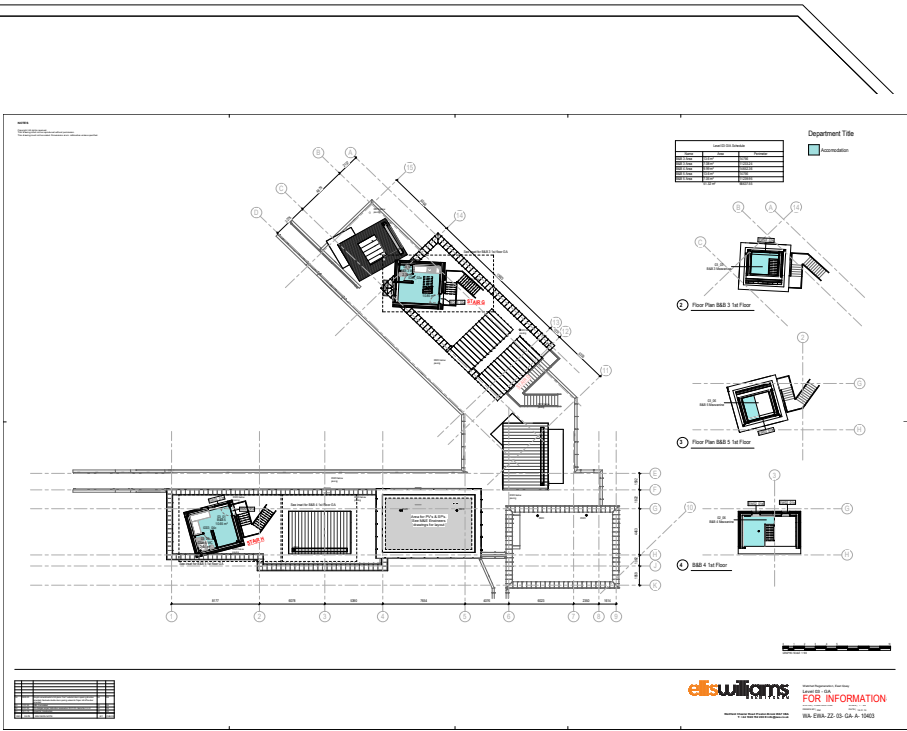
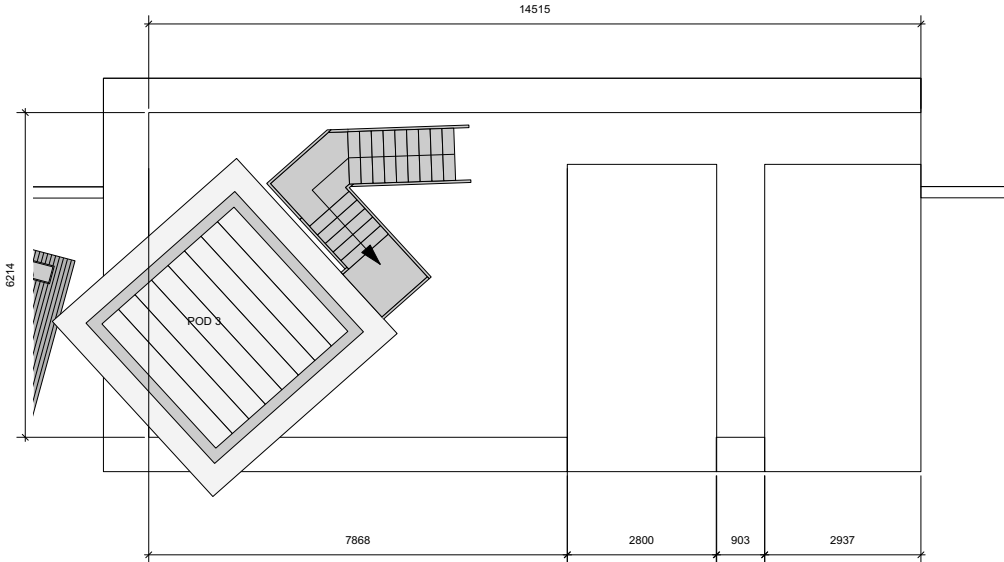
Above right: The view from the second floor of East Quay, looking out towards Pod 3

# Commission Site Overview and Building Floor Plans

The following link contains a video of the access to Pod 3, as well as footage of the commission site and the surrounding area: <https://youtu.be/4o0qXjvmdOM>

We welcome applicants to visit East Quay in person if they are able, to help gain a better understanding of the site and the surrounding area. Please contact Millie Laing-Tate at [millie@containsart.co.uk](mailto:millie@containsart.co.uk) to arrange an in-person conversation about the site during your visit.

Below are the floor plans for Pod 3 and the East Quay building as a whole.





# To Apply

To apply, please complete all the fields in the Google Form (link below) and submit your application online by Friday 30th January 2026, at 5pm.

Apply here: <https://forms.gle/iu4C2scDwEdyoMPo9>

## **In the application form, you will be asked to submit the following information:**

- Full name and contact details
- Postal address/where you're based
- Website and social handle (if applicable)
- A PDF (max 10MB) including the following details:
  - Brief artist biography (max 300 words), including description of artist practice, along with any relevant technical expertise acquired through previous experience of project delivery.
  - Description of the ideas behind your furniture design
  - Hand/computer drawn visualisation of the furniture design. This can include details of the construction process.
  - Outline of materials, budget and production costs
  - Installation information, including risk assessments
  - Maintenance regime
  - Projected timeline for project delivery and completion
  - Contact details for one referee

## **Contains Art CIO will review all applications received, judged on the following criteria:**

- Originality of design and concept:
  - How does the proposal demonstrate creativity and respond to the unique location of the site and its surroundings?
- Proof of previous relevant project delivery:
  - The strength of previous relevant projects and your track record of project delivery.
- Feasibility:
  - How would the proposed design work in the context of the site particularly in relation to health and safety requirements and environmental conditions?

## **Letting you know our decision**

Contains Art CIO will review all applications received. Shortlisted artists may be invited for interview depending on the nature of the application.

All applicants will be contacted with the results in the week commencing Monday 15th February 2026.

## **Contact**

For more information about the Commission or East Quay as a whole, please contact: Millie Laing Tate, Assistant Curator, at [millie@containsart.co.uk](mailto:millie@containsart.co.uk)

# Equal Opportunities

East Quay is an equal opportunities employer, dedicated to creating opportunities for everyone, regardless of their background.

We are committed to creating a truly inclusive environment where everyone can participate, learn, work, and engage in a safe, supportive space, free from prejudice and discrimination. As part of our commitment to promoting diversity in creative practices, we strive to implement reasonable adjustments to support artists who may face barriers during the selection process, regardless of the reason.

Please note that Pod 3 is located on the second floor of our building and is not accessible via a lift. Whilst we acknowledge the limitations this may impose, we are open to discussing how we can accommodate individuals with mobility issues for the project.

Once you have submitted your application, we kindly ask that you complete our Equal Opportunities form using the following link: <https://uk.culturecounts.cc/s/5979rK>



Supported using public funding by  
**ARTS COUNCIL  
ENGLAND**

contains

**EAST  
QUAY**