



NETPRO



NETPRO

In addition to the detailed design of transportation, water structures, and various excavation projects, NETPRO provides powerful tools to efficiently produce field applications, as-built projects, and progress payments.



Increase Efficiency

Time and cost overruns can be prevented, significantly enhancing competitive advantage.



Project Controls

Automatic project controls can be applied at every phase, particularly during the project production stage.



Dynamic Structure

Projects can be revised automatically. The flexibility of dynamic and interactive design environments ensures responsive workflows.

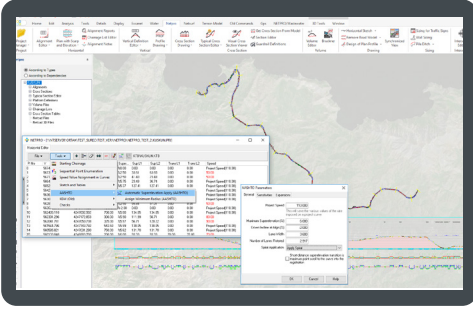


Ease of Use

The intuitive, rich-featured interface—thoroughly tested and thoughtfully designed—allows for seamless interaction.

NETPRO offers advanced capabilities for the design of transportation and water structure projects such as highways, railways, airports, intersections, tunnels, ponds, dams, flood protection systems, field applications, excavation, final calculation processes, and as-built projects. With its latest version, NETPRO introduces cutting-edge solutions that enhance productivity, reduce costs, enable better planning, prevent issues in advance, and allow greater control over more scenarios.

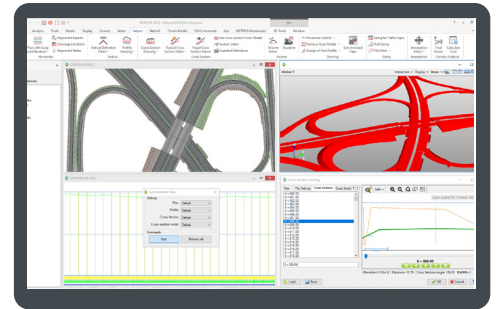
PROJECT DESIGN ACCORDING TO DIFFERENT STANDARDS



Horizontal and vertical geometries can be quickly defined in compliance with AASHTO and other standards. Designs can be adapted to various regulations, with the flexibility to add new standards as needed. Parameters can be customized, and all relevant calculations can be updated accordingly.

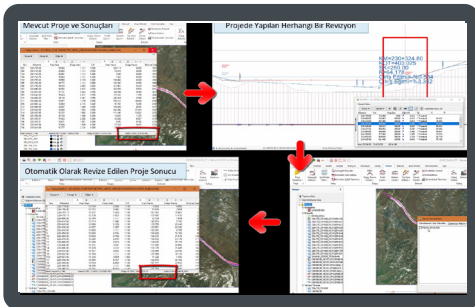
AUTOMATIC REVISIONS & DYNAMIC STRUCTURE OPERATIONS

Projects can be revised rapidly within a dynamic structure. Any changes made automatically update all related project and output files. Modifications such as horizontal and vertical alignments, cross-sections, superelevation, slopes, survey points, retaining walls, and typical section changes are reflected throughout volume calculations and outputs.

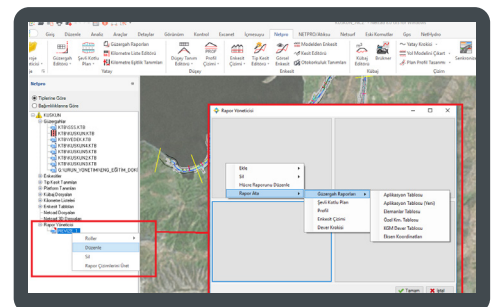


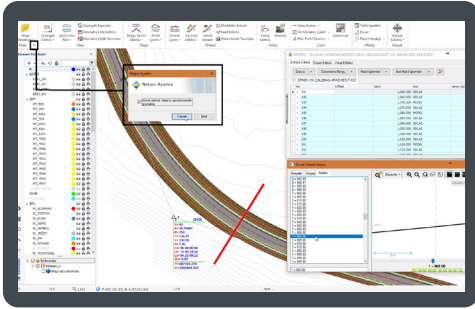
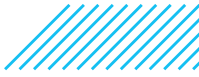
In alignment design, any coordinate changes, deletions, or additions to control points are automatically shown in final alignment plans.

Following elevation readings, complete project updates can be performed automatically.



Reports to be generated after dynamic updates can also be pre-defined.

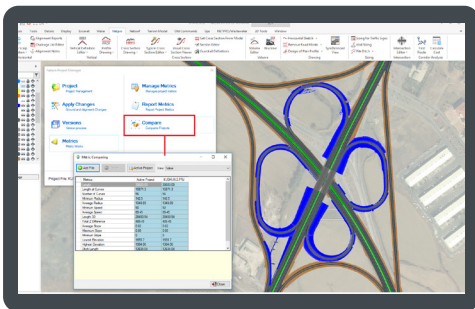
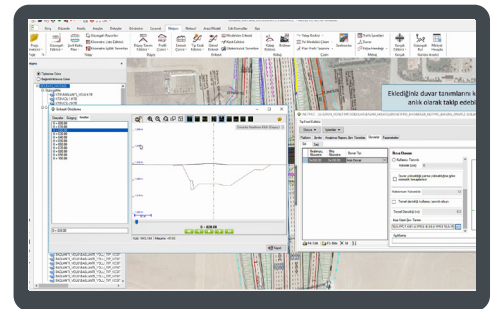




The visual cross-section viewer can be opened as a separate editor and window. This provides a detailed overview—across the main screen, cross-sections, and editors—with highlighted visuals, eliminating the need to switch between interfaces.



Changes in the typical cross-section editor are instantly visible, even before sections are generated, enabling real-time monitoring during the editing phase.



DETERMINE THE OPTIMAL PROJECT

Multiple design alternatives of the same project can be created within a dynamic structure. These alternatives can be compared according to defined criteria to determine the most suitable option. This process enhances planning quality and improves competitiveness.



FWORK SEAMLESSLY WITH OTHER SOFTWARE

Projects can be exported to different software platforms, and data from external software can be imported to continue work without disruption. Revisions and updates can be applied easily and efficiently.





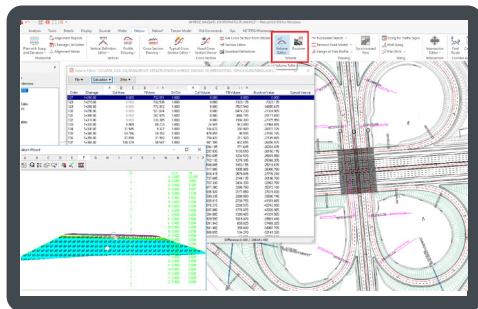
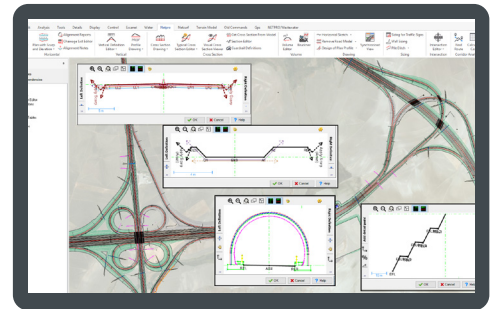
PREPARE APPLICATION PLANS WITH A SINGLE OPERATION

Field implementation of the project can be facilitated using all necessary tools. Project data can be transferred to various surveying instruments in a single operation, allowing immediate application in the field.



READY-TO-USE TEMPLATE LIBRARIES

Predefined template libraries can be utilized at all project stages. Custom libraries can be expanded and adapted to specific project needs.



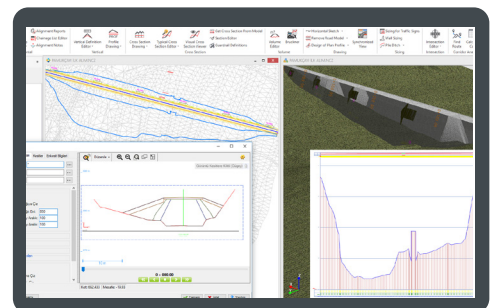
PERFORM VOLUME AND EXCAVATION CALCULATIONS QUICKLY

Volume calculations can be performed between any selected surfaces. Brückner classifications can be defined, and results can be exported in various report formats.



AUTOMATIC PROJECT VALIDATIONS

Real-time validation tools can be used for all core geometries and calculations—such as alignment definitions, typical cross-sections, and volume computations—throughout both new and as-built project stages.



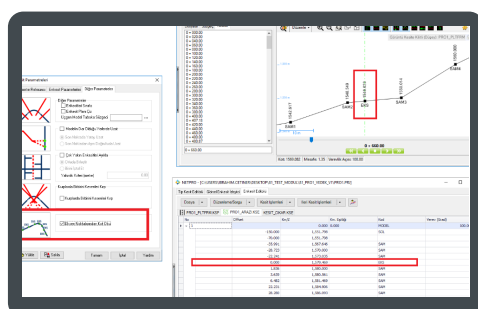
GENERATE AND MANAGE DETAILED SECTIONS

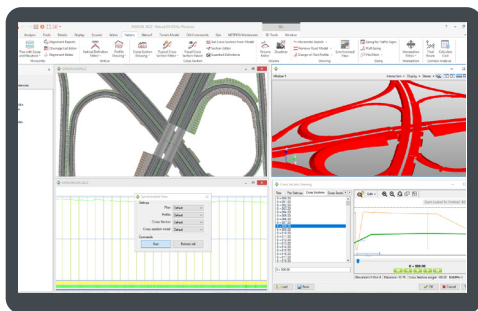
Terrain cross-sections and longitudinal profiles can be created with a high level of detail.

Typical cross-sections can be generated using rules based on interconnected alignments.

Finished grade lines can be automatically determined through 3D calculations that minimize cut/fill scenarios. Cross-sections for structural components such as reinforced concrete or stone retaining walls, head/toe ditches, guardrails, drainage channels, stripping, and bench excavations can be automatically produced in a single operation.

Generated sections can be managed and edited either from section editors or the CAD interface. Reports can be created using custom queries.





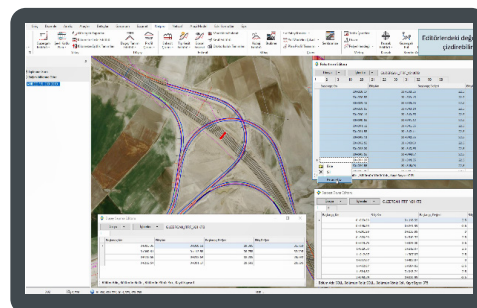
AUTOMATIC ALIGNMENT ANALYSIS

The most cost-effective alignment and corridors between two points can be identified automatically based on defined slope parameters.



UTILIZE POWERFUL EDITORS

Comprehensive editors are available to handle all necessary details during horizontal, vertical, and typical cross-section design. These editors function interactively with the display in real time, can share data, import/export from multiple file formats, and offer enhanced functionality across the platform.



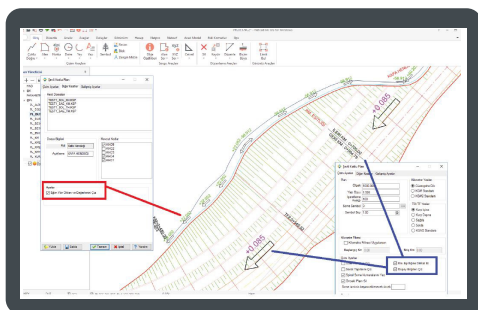
ADVANCED FEATURES FOR DRAINAGE PROJECTS

MCulverts can be automatically sized, and hydraulic result reports can be generated.

Normal and critical flow depths, velocities, critical slopes, and air clearances are calculated automatically. Real-time checks during calculations allow for immediate detection of non-compliant dimensions. Flood protection structures can also be automatically sized.

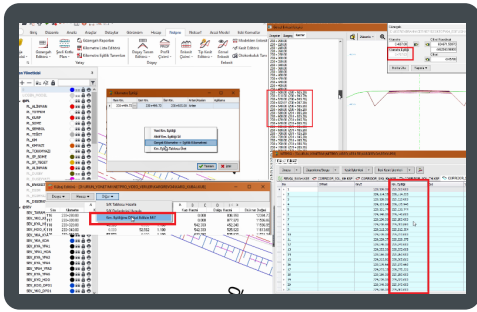
Flow directions within any cross-section can be identified, and drainage structures can be determined automatically.

Through **Netpro 9 & Nethydro** integration, flood discharges can be calculated. With **Netpro 9 & Canalise** integration, pipeline designs can be developed, discharges can be calculated using different methods, and pipe diameters can be automatically determined.





KILOMETER EQUALITY

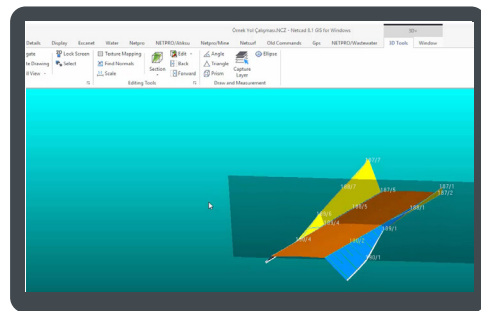
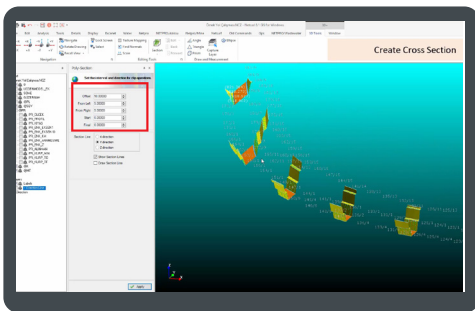


Station equivalency (kilometer equality) values can be defined and applied to existing or new project files. Both increasing and decreasing station values are supported and can be reflected across relevant editors, including volume editor, section editor, cross-section drawings, slope-and-elevation plans, alignment plans, and the visual section viewer. A comprehensive "Kilometer Equality Table" can also be generated, showing forward and reverse station values.

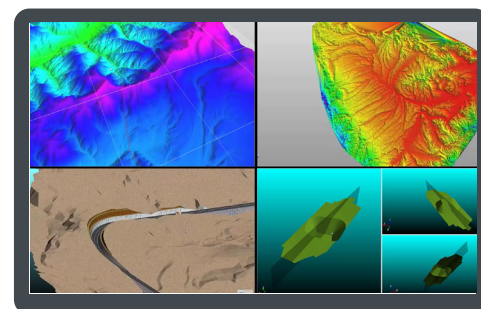
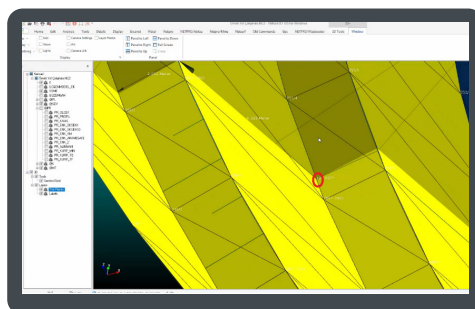
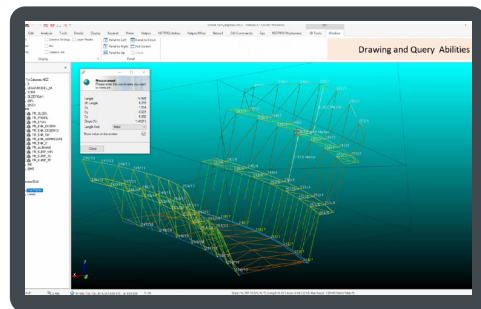
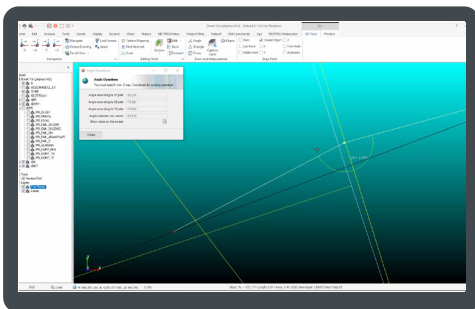


3D FEATURES

Projects can be visualized using the 3D viewer, allowing geometric queries and design scenario adjustments. Cross-sections can be extracted and reviewed at specific station points directly within the 3D interface.



You can make drawings and queries.





Ankara Headquarter
Bilkent Cyber Plaza, B Blok
No:409 Cyberpark
06800 Çankaya/Ankara
Telefon
+90312 265 0510

İstanbul Region Office
Nidakule Göztepe, Merdivenköy Mah.
Bora Sok. No:1 Kat:1
34732, Kadıköy/İstanbul Türkiye
Telefon
+90216 417 6210