**PRODUCT FEATURES:**

Urinal flushometer valve with automatic activation sensor of electrical current and mechanical manual over-ride button to generate a complete flushing without power.
With two anti-theft systems.
Touch free and hygienic operation.
Titanium-coated button with antibacterial action.
Adjustable tailpiece.
Easy installation, maintenance and sensor detection adjustment.
High efficiency.
Vacuum breaker for back-flow protection.
Left or right installation.
This product can be used to help achieve water efficiency goals as well as gaining USGBC LEED points.

MATERIALS:

Solid brass, for durability and reliability.
Ultra-high resistance to corrosion and tarnishing finishes.

INCLUDED COMPONENTS:

3/4" - 14 NPT sweat solder adapter.
1 1/2" vacuum breaker.
9 VDC power adapter.
5/64" allen wrench.

SPECIFICATIONS:

9 VDC
3 W Power

INSTALLATION:

Ø 3/4" pipe water supply line.
Spud coupling and escutcheon for 3/4" top spud.

OPERATION:

Automatic detection with a proximity sensor.
When the user leaves the sensor detection zone, in 2,5 s the system automatically flushes 0,25 GPF.
Includes a mechanical manual over-ride button to generate a flushing without power.

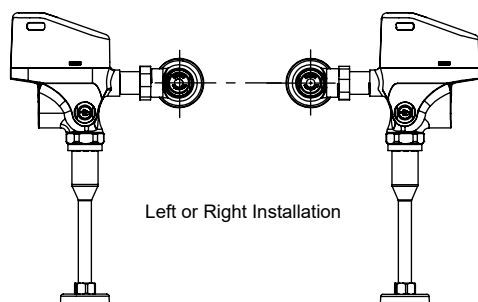
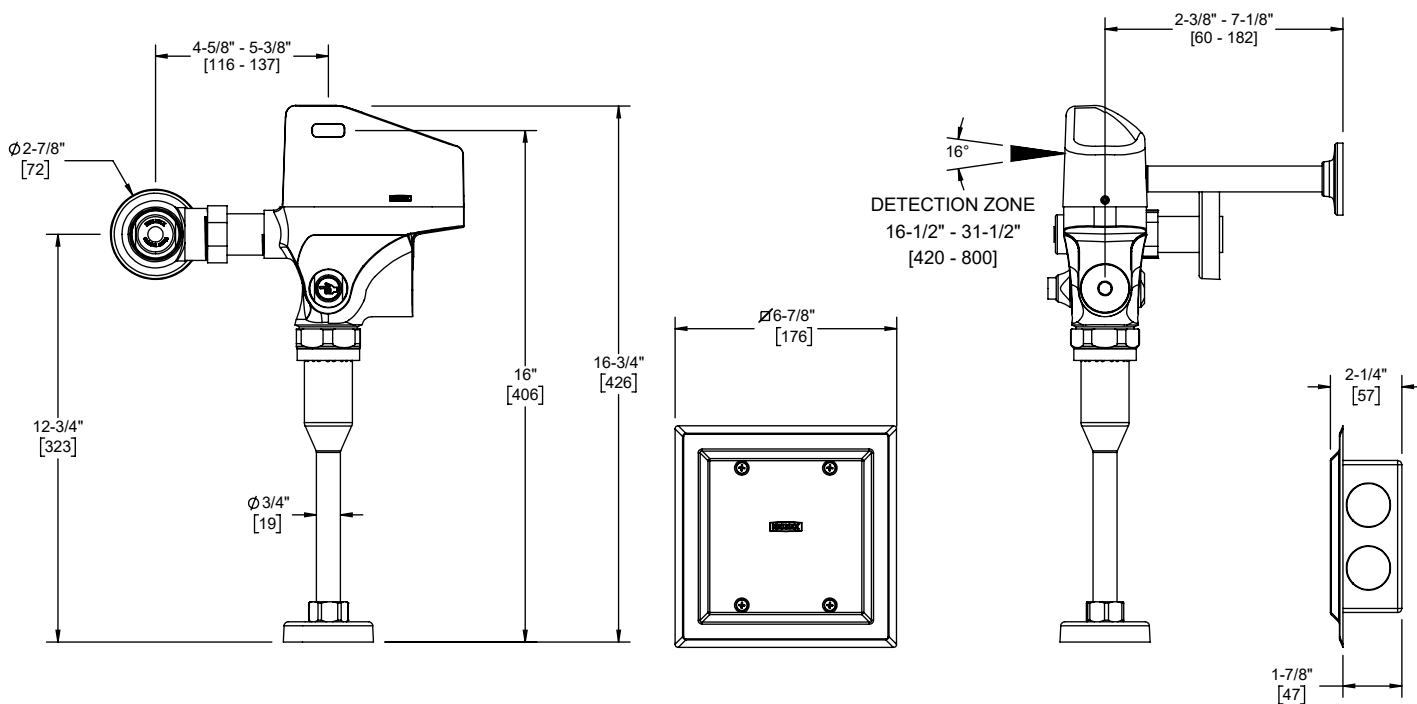
CODES AND STANDARDS:

EPA WaterSense Specification for
Flushing Urinals (Version 1.0)
ASSE 1037/ASMEA112.1037/CSA
B125.37
CEC/DOE-ENERGY POLICY ACT 1992

FINISHES:

PC Polished Chrome

Estimated Dimensions Dim. inch. [mm]



WORKING PRESSURE:

Pmin.= 20 PSI

Pmax.= 125 PSI

MAXIMUM FLOW RATE:

0,25 GPF

NOTES:

Install the product according to the Installation Guide.

Technical Support and Service

technicalservice@helvexusa.com

Toll Free Number: (210) 394-5686

Customer Service

contact@helvexusa.com

Toll Free Number: (855) 267-2498

Original Spare Parts

The product's illustration may vary in appearance or its parts to the actual product as a result of the ongoing improvement process. This does not imply any liability to the manufacturer. Visit our website www.helvexusa.com