

THE APSLEY Advocate

CIRCULATION 1920 – P 02 6777 1111 F 02 6777 1112 wtc@walchatelecottage.com.au walchatelecottage.com.au

20 August 2025



**THE STATION
ANGUS**
— YARROWITCH —

Grown on grass

**ANGUS
BULLS
PADDOCK
SALES**



Alan 0457 311 952
Austin 0407 870 333

thestationangus.com



MICHAEL McHUGH
BA LLB (Hons)

Acc. Specialist - Property Law
Australian Legal Practitioner

Property Law & Conveyancing
Company & Business Law
Dispute Resolution
Succession Planning
Wills and Estate

17/429 Peel Street, Tamworth

WALCHA
By Appointment

6768 0888
0418 658 217

mmchugh@lawexchange.com.au
www.lawexchange.com.au



The Cup that stopped Walcha



The 'race that stops the nation' stopped the streets of Walcha on Friday. Melbourne Cup trophy glistened under the Walcha sun as it travelled along the streets aboard a horse drawn carriage with winning trainer, Sheila Laxon hoisting the trophy high for all to see. The Lexus Melbourne Cup Tour visiting Walcha was a magic moment, with hundreds lining the streets to get a glimpse of the trophy which is valued at over \$800,000. Smiles radiated from ear to ear, and it wasn't just the young children who were excited to see the Cup and have their photo taken with it, with community members swarming to McHattan Park to have their photo taken with the prized trophy.

One hundred and forty people joined the celebrations at the Bowling Club on Friday night to see a presentation on how the Cup is made and witness a very special presentation as Norm Bazeley received the 'Breeders Trophy' for last year's winner 'Knight's Choice'.

Emcee Gary Olrich capped off the celebrations with a poem encapsulating the excitement of the day, which was such a memorable and happy occasion for our community.

More photos on Page 7 >

Above: Norm Bazeley with 'Midnight Pearl' (mother to 'Knights Choice', 2025 Lexus Melbourne Cup winner), Trainer, Sheila Laxon with Walcha Central School Student, Bonnie Forrester wearing the silks of the winner.



NEW PRODUCT
Rata Power Claw

Multiple sizes available
in store now.



6 Aberbaldie Rd Walcha. P 6777 2588 • www.wvs.com.au



CIVIL CONSTRUCTION EXPERTS

OUR PLANT:

- ✓ D6T Dozer - 18ft Stickrake + GPS + Lazer grade
- ✓ 5t, 13t, 20t, 36t Excavator GPS, grabs, screen
- ✓ 2t - 12t tipper & dog, 40t moxi, water cart
- ✓ Positrack, tractor, augur, post driver

OUR SERVICES:

- ✓ Wet and dry hire options
- ✓ Driveways, dams, pads, quarry
- ✓ Sheds, bridges + farm infrastructure
- ✓ Design & Engineering services

CONTACT GLEN
0403 726 780
 OXLEYCIVIL.COM.AU
 VISIT FOR A FULL RANGE OF
 EQUIPMENT & SERVICES

**COMPETITIVE
RATES**

around the traps

By SIMON NEWTON

The rest of the week is looking very wet once again and it's highly likely we will see more flooding, especially along the coast which will wear the brunt of the rain. Forecasts suggest anywhere from 25 – 70mm for our district and more for those who live closer to the coast. It was very spring-like over the weekend, but a huge frost on Monday reminded us that winter still lingers and we have a way to go before it recedes. The weather looks fine for next week with daytime temps anticipated to hit the high teens which will be welcomed after this wet week. The cleanup from the snow has still been underway with people working overtime to get our town back in shape.

The excessive wet winter has really taken its toll on the country as well as on many of the waterways. We can all see the erosion of the levee bank in town at the mill hole which will take some fixing. That erosion is not an isolated case, I have seen multiple banks washed away along rivers and creeks that we will never get back. Now we talk about farming practices affecting the natural landscape however, natural weather events cause the biggest issues to our environment. These weather extremities are not unusual with records showing this has happened before, it's just a shame to see what the weather can do to our landscape.

Now, I missed the meeting in town regarding the Native Vegetation Regulatory Act, but the more I think about this the more it gets under my skin. Please tell me how a river, five metres wide can divide an area that is Category 2 (regulated land) on one side to Category 1, (exempt) on the other side, both with the exact same landscape. Secondly, you can't tell me that soil health is better off with native species than it is when improved and our current environmental challenges speak volumes to this statement. We have a lot of issues including soil acidity, runoff and erosion at present due to a wet winter and I don't believe that native country has better water infiltration and water utilisation than improved. There are bigger problems in Australia than graziers improving their paddocks and it just grinds me when you see large new areas bulldozed for housing estates, take for instance north of Brisbane, and they are trying to over regulate farmers. I completely understand that some people are doing the wrong thing with farming country, but the majority are doing an exceptional job, improving paddocks to increase production while being better land managers – why would people improve country just to flog the life out of it? It seems that the more land rises in value over time; the more regulations land holders are scrutinised and the higher the taxes we pay to keep these regulators in a job. We also live in a time when we need to become more efficient, getting more from the land that we farm by improving the ways we farm to become more productive to feed an increasing world population.

Let's look at the USA beef market again with Angus cows with calves recently hitting \$5750 US, that's \$8800 AU a unit in comparison to the top of our commercial units bringing \$3320 on AuctionsPlus just last week. The USA currently has its' lowest beef herd since 1951 (approximately 87 million head) and just last week, ground beef on the shelves of the US supermarkets hit record prices at around \$6 per pound, equating to nearly \$20 Australian per kilo.

Saleyard numbers continue to swell as we edge closer to spring with Tamworth yarding 3000 cattle on Monday, Gunnedah 5000 on Tuesday and last Thursday Dubbo, 7000 cattle. Extra numbers haven't dampened buyers' spirits with restocking cattle meeting strong demand with Angus steers topping at 608c/kg for 252kg. Feeder cattle met strong competition, Angus feeder steers to 528c/kg while XB made 472c/kg, Angus feeder heifers to 468c/kg while heavy kill cows topped at 384c/kg for 764kg. The lamb market might have run its race with all lamb markets quoted softer by at least \$15 – 20 per head throughout the saleyards last week. Speaking with a southern processor of trade lambs he mentioned they are dropping their kill numbers back which will mean less lambs required. Kill lambs at \$11–12 per kilo is still an exceptional price and one we shouldn't budget on every year but have a go at the mutton job knocking on \$8 per kg, that's solid.



Design the life you want and let us take care of the rest.

Introducing Paul Macfarlane and Wealth Architects Tamworth, now succeeding Greig Meyer and PKF Wealth. Paul, a seasoned financial planner and principal of Wealth Architects, serves the Tamworth and Walcha communities.

Reach out to our office to see how Paul can help you achieve your financial, retirement, and investment goals.



Tamworth
22 – 24 Bourke St Tamworth 2340

Walcha
12 Derby St Walcha 2354

P: 6768 4560

Wealth Architects Tamworth is a Corporate Authorised Representative (001247176) of Insight Investment Services Pty Ltd, AFSL 309 996.

'Miltiades' Golden Fleece Success at the Ekka

The Hoy family of 'Miltiades', Walcha enjoyed great success with their competition fleeces at the 2025 Royal Queensland Show, more commonly known as the Ekka. The Hoy family took home the *Champion Superfine Flock Merino Ewe or Wether Fleece of Show* as well as placing second in the same category. The Champion 5.5kg fleece, an impressive weight for a superfine fleece, was from a vendor bred three year old wether with 'Karori' and 'Glenburnie' bloodlines. The fleece did not have a lot of colour, which was deemed lucky considering the relentless wet conditions endured by the flock in the 'Miltiades' paddocks in the lead up to the 2025 Ekka.

John Croake, AWN Agent, assisted Stephen and Barry Hoy with the selection of wethers to shear for the competition and helped prepare the chosen fleeces for show. John commented; The fleeces were very stylish, extremely bright and soft, with a spinning quality count of 74's.



The Hoy family's 'Miltiades' fleece on show at Brisbane's Ekka
2025 Champion Superfine Flock Merino Ewe or Wether Fleece of Show

Man's Not A Camel

Two Walcha locals, Jed and Cameron, are currently taking on the outback in a car older than most of the competitors themselves, all in the name of raising funds for the Cancer Council.



The pair are competing in the 2025 Mystery Box Rally, one of Australia's largest community-led fundraising events for cancer research. Since its inception, the rally has raised over \$8 million for the Cancer Council, with teams from across the country driving vehicles at least 25 years old through some of the harshest and most unpredictable terrain the Australia has to offer.

Starting in Broken Hill, participants drive around 2,500 kilometres in five days, with each day's destination revealed only on the morning of departure. For Jed and Cameron, that means tackling unsealed roads, fuel blockages, jammed gearboxes and the ever-present question of whether their "trusty" Kingswood will make it to the next checkpoint.

Day one of the rally saw them cover 497 kilometres, including 270 kilometres of unsealed road. As they pushed towards Arkaroola, north-east of the Flinders Ranges. Along the way, the group has faced breakdowns, roadside repairs, and even found time to take in the beauty of Lake Eyre.

To take part in the rally, each team must raise a minimum of \$4,000, with all proceeds going directly to the Cancer Council. So far Jed and Cameron have raised \$15,151 and are still accepting donations. Donations can be made via their official fundraising page.



Stock and Property Watch
www.nutrienharcourts.com.au



HIGHRENT ANGUS BULL SALE

This Friday 22nd August

Inspections from 9:30am to 12:30pm at "Highrent"
12524 Oxley Hwy Yarrowitch

Sale starts at 1:30pm on Auctions Plus ONLY



Walcha Garden Club Annual Luncheon

Friday 5th September

Walcha Golf Club at 9.30am

Guest Speaker: Angela Sole (Horticulturist)

**Speaking on: Designing gardens
with cool climate plants**

Plant Stall, Raffles and Lucky Door Prizes available

Cost: \$35 per person includes Morning Tea and Lunch

RSVP: 29th August

Please advise of any dietary requirements

Payments

Regional Australia Bank

BSB: 932 000

Account Number: 958 427

Please reference your name and club

Payments can be made to

Treasurer Jenny Hoy 0427 367 711,

post to PO Box 10 Walcha 2354,

or can be made at Paper Dolls



The Great Escape OZ Car Rally

The most incredible charity motoring event raising awareness and funds for Cystic Fibrosis research is coming to Walcha.

This event began back in 2002 and to date we have raised in excess of \$6 million.

Cystic Fibrosis is the most common life-threatening illness affecting our children today, there is no cure. CF primarily attacks the lungs and the digestive system before taking life itself.

The rally will start in Newcastle and end in Airlie Beach. There will be two opportunities in Walcha to see and support the OZ Car Rally:

Sunday September 14 | 6:30pm | Apsley Arms Hotel

Monday September 15 | 7:30 - 8:30am | Walcha Royal Cafe

Please contact Mal Boardman for further information.

0428 866 091 | malcolm.boardman@hotmail.com

Ambrose Golf Fundraiser

Walcha Central School P&C are holding an ambrose golf tournament on Saturday 20 September, 2:30pm, followed by a presentation, dinner and auction.

The event is to raise funds for the school's technology and everyone is invited come along and get involved. Enjoy good company, riveting rivalry and no doubt a bit of banter on the Walcha Golf Course. Gather a group of your friends and register your team of three through the trybooking link below.

Auction items include a beautiful artwork donated by Gemma King, a highland calf donated by Sam and Jodie Martin, a \$500 voucher to Brooklyn Quarry and a five-person 'Mens Working Bee' team for three hours.

This event has been proudly supported by Origin Energy, Betts Transport, Transwest Fuels, Nutrien Boulton's, Marchant Bros, RABO Bank Australia, Winterbourne Wind, Walcha Vet Supplies, Oxley Civil, Davidson Cameron & Co, Elders Walcha, Brooklyn Quarry, Ridley Agriculture and Southcote Shorthorns.

Saturday 20 September, 2:30pm

<https://www.trybooking.com/events/landing/1428315>

Nowendoc 'Back to the Bush'

Enjoy four days of good old fashion bush events, fun and activities for all ages at Nowendoc.

Starting on 2 October, community members will host a 'Back to the Bush' long weekend. To be held at the Nowendoc Recreation Reserve, campers are invited to stay for four days to participate and enjoy the activities. Activities include; sheep/human penning, a team penning competition, dog high-jump and more.

Live entertainment comes in the form of country music every night and a talent quest on Saturday. There will be great food on offer from mango chicken curry, burgers, spit-roast lamb and pork and even a camp-oven cook up.

So put it in your diaries, invite your friends and family up for a great weekend at Nowendoc.

For more information please contact:

Jayne Doolan | 0427 492 252 | doolans_1234@bigpond.com

Peter Etheridge | 0411 655 565 | peter@etheridge.net.au



AMBROSE GOLF TOURNAMENT



Join Walcha Central School P&C for an Ambrose Golf Tournament.

Help us raise funds for our School's technology upgrade, whilst enjoying good company and riveting rivalry on the Golf Course.

The tournament will be followed by presentations, dinner and an auction.

**SATURDAY
SEPT 20th
2025**

**2.30pm
Shotgun
Start**

**Walcha Golf
Course**

**Scan the QR code to
book today!**



Tree Clean up after the Snowfall

The aftermath of the recent heavy snowfalls, has left many to face a big clean up of fallen trees and branches.

A timely reminder, Walcha Council is offering FREE GREEN WASTE drop-off for residents up until this Friday 22 August to support the clean up of recent weather events. However for those with larger clean-ups, needing to burn piles, it is important to be aware of the current fire regulations and safe lighting practices. Here is some important information.

Before lighting ANY fire you are required to notify your neighbours and the Rural Fire Service (RFS) at least 24 hours beforehand, regardless of whether a permit has been obtained or not.

Fire Permit Basics

Rural properties MUST obtain a fire permit for each individual burn event being administered. In the Walcha Local Government Area permits need to be applied for from 1 September to 31 March annually (dates may vary locally based on conditions). Fire Permits can be obtained by contacting your local Fire Permit Officer or via the RFS website www.rfs.nsw.gov.au.

If you are planning a burn in town, you require a Fire Permit all year-round for any backyard burning (other than in an incinerator). Contact Fire and Rescue NSW (FRNSW) on 5732 8481. For further assistance, please

contact 6771 7700 during business hours.

Permit Conditions

- Always carry the permit on site when lighting a fire (this may include a digital copy on a device).
- Supervise the fire at all times, unless stated otherwise in your Fire Permit.
- The permit may be modified or revoked by the responsible authority based on weather or fire risk at any time.

Before Lighting a Fire

- Follow all conditions listed on the permit and ensure the fire can be contained and controlled for the duration of the burn.

Penalties

- Fines up to \$5,500 and/or one year in jail for non-compliance with a Fire Permit or notification.
- If a fire escapes into, and damages your neighbouring property, fines up to \$110,000 and/or five years imprisonment may apply.

Significant penalties apply under the Rural Fires Act 1997, including possible civil suits for damages.

Always obtain a permit from the appropriate authority and give notification to all adjoining neighbours and authorities before lighting any fires. These regulations have been closely monitored and, where required, enforced in recent years to ensure our community remains safe. Please be mindful of adhering to these regulations.

thumbs



- 👍 To Johnny, Buck and Wacey – your thoughtfulness is greatly appreciated.
- 👍 To all who participated in the Melbourne Cup Parade. What a great event.
- 👍 To the organiser's of Indoor Hockey and the parent/grandparent helpers. You all do a great job running the weekly games.
- 👍 Huge thanks to the chef and kiwi bar lady at the Commercial Hotel for a great dinner on Monday night.
- 👍 To Rebecca Whillock from Walcha Council and organising committee for coordinating a successful Melbourne Cup Tour. Well done to all involved.
- 👎 To the many trucks that are not adhering to the 50km/h speed limit through town.
- 👎 To ALL the people that enjoy walking their dogs around the river levy but don't pick up after their dogs - disrespectful to all those that do, the community and tourists. Bags are provided, use them.
- 👎 To the new, inefficient and impractical set up at the Council tip/recycling centre.
- 👎 To the person who feeds the cockatoos and corellas. You are not doing the birds any favours and they are causing damage to neighbour's properties.

Contributions will be received in person, by phone or email and must be accompanied by your name and contact details. They will be printed at the discretion of the editor.

REAL ESTATE & LIVESTOCK

pitt.son.walcha@bigpond.com

www.pittsons.com.au

Pitt Son's

OFFICE 6777 2000

Sam Payne 0428 667 404

Ron Vincent 0427 775 821

~ Solid Home – Great Location ~



- Four bedrooms all with built in robes.
- New modern bathroom, large shower no steps.
- Kitchen with ample cupboards.
- Spacious entertaining room with own toilet.
- Lounge room opening out onto verandah.
- Car accommodation plus workshop area under home.
- Double garage, lock up with roller doors

🛏 4 🛁 1 🚗 3

\$525,000

Great Outlook



• Double block • 4 bedrooms

🛏 4 🚗 1

Locally owned and operated

Discover the Gardens of Walcha

Walcha Garden Festival 2025

GARDEN 1 – ALLEN AND COLLEEN GREEN

'Ivybank' garden was first established in the late 1800's by the Green family. It was originally very much a traditional cottage garden of the time. It consisted of gravel paths lined with plantings consistent of the time such as gladioli, dahlias, and carnations.

Other early plantings were camellias, bottle brush and some roses. The elm tree in the north-east corner of the garden was one of four planted to mark the boundary of the original selection.

The beautiful garden was extensively extended in 2000. It was done without any real plan, but now features vintage machinery sourced from the property.

Plants of note include a Wollemi Pine, succulents and rhododendrons. There is also a very productive Meyer lemon tree planted on the northern aspect of the house. Typically preferring a Mediterranean type climate, this tree has remarkably defied Walcha's harsh, cool environment.



GARDEN 2 - ROS WALL

'Summerfield', is a labour of love that Ros and her late husband, Brian, created. They have created a wonderful garden using the old established trees from the original garden.

After removing a privet hedge, they started to move the garden fence out. After moving the garden fence three times, they set to work and built a large dam and brought in very large rocks to build a frame for their garden. The garden came together with no actual plan. It just evolved.

In 2004 we decided to build a new home on the existing site. Many mature trees and old gardens had to be removed to make way for the new home. This when the planning began to make new gardens to fit in with the existing gardens.



NEVER BIN A BATTERY



Just one battery can spark a fire



Find a safe battery drop-off near you

 [battery epa](#)



Proudly funded by the NSW Government.

nirw
NORTH ISLAND REGIONAL WATER
making matters in our region



45ft flat top • 45ft single deck cattle float • 26mtr B Double
19mtr mini B Double • Low Loader available for hire



BRIAN
Smith
TIMBER
TRANSPORT

Call us for
your large
Transport
needs

WALCHA

02 67772126

Bonnie Smith 0429 772 077

Brian Smith 0427 780 216

Melbourne Cup parades through Walcha



Hunter Valley Classic Carriages leading The Cup parade.



The Walcha Community got together on Friday to celebrate the Melbourne Cup making its way through the streets of Walcha! Huge thank you to the organisers for giving us the opportunity to experience this event! – Photo credit 'Captured by Laura Amy'

A heartfelt thank you to the Walcha Community

On behalf of the organising committee, we would like to extend our heartfelt thanks to everyone who was part of the Lexus Melbourne Cup Tour visit to Walcha. What an incredible day for our town!

To the committee – your dedication and hard work ensured the day was such a success, and we are deeply grateful.

To those who contributed their time and talents – Laura Donnelly for her fantastic photography, the Walcha Men's Shed for their support, and the Walcha Bowling and Recreation Club – thank you. A special mention goes to Adam, Di, and the entire team on the night. You were amazing! Our sincere thanks also go to the schools and aged care facilities for the planning and support given in the lead-up to the day – your involvement was truly appreciated by the committee.

And what a spectacular street parade! To all who participated and played a role in creating such a vibrant display of Walcha at its best – thank you. Having Hunter Valley Classic Carriages present on the day added to the grandeur and excitement, and our heartfelt thanks extend to them as well.

We would also like to acknowledge the generosity of the businesses who donated to the auction: Lowes Petroleum, GrazAg Armidale, Sew

On Embroidery, Victoria Racing Club, Thunderbolts Equine Vet, and Marchant Bros. Your support added so much to the occasion.

To Gary Olrich, emcee extraordinaire. With a microphone in his hand he had the crowd at his feet. He was fabulous. Thank you Gary.

A very special thank you goes to the representatives from the Victoria Racing Club, whose presence and support made the day all the more memorable, and to the amazing Sheila Laxon, who brought such energy and spirit to the festivities.

Finally, to the Walcha community – thank you for getting involved and making this event so memorable. Hold your heads high: the representatives from the Victoria Racing Club said this was among the very best Cup Tour visits they had seen in years. What a wonderful testament to the spirit of our town.

Now, let's keep our fingers crossed that Walcha draws the barrier of the winning horse at the 2025 Lexus Melbourne Cup, and brings home \$50,000 for our community!

With gratitude,

Norm and Di Bazeley and the Cup Tour Committee



RUGBY REPORT WALCHA V BAA BAAS

By Eric the Spider

The Walcha Rams 1st Grade side delivered a commanding performance in their final regular season match, defeating the Armidale Barbarians 76-5 at home. The victory sets the Rams up with strong momentum heading into the finals. The Rams came out firing, establishing early dominance through structured phase play that put the Barbarians' defense under immediate pressure. Powerful carries from prop Richard Hunt gave Walcha prime attacking position inside the Barbarians' 22. The forwards capitalised with relentless work at the breakdown, securing quick ball that was then spun wide to winger Troy Hawkins, who crossed for the first try in the corner, putting Walcha up 5-0. Despite their early dominance, the next 15 minutes saw Walcha struggle to convert promising field position into points. Multiple turnovers in the attacking red zone, through handling errors and staunch Barbarians defense, kept the scoreline tight. However, the Rams' defense remained rock-solid, with Cole Tweedy leading the way. His bone-rattling tackles on the Barbarians' ball carriers stifled any momentum the visitors tried to build, ensuring Walcha maintained control. As the first half progressed, Walcha regained their composure and began to assert their attacking prowess. Ed Cordingley straightened the attack well to create space for the outside backs. The Rams capitalised with three more tries before halftime, including a well-worked team try to Ross Monie. At the break, Walcha led 26-0, with their clinical execution and physicality overwhelming the Barbarians.

The second half saw the Rams shift into overdrive, wearing down the

Barbarians with relentless attacking waves. Moses Tuvou was electric on the wing, carving through the defense with a series of clean line breaks that led to multiple tries. His speed and footwork left defenders grasping at air, adding significant points to the tally. Inside centre Chaden Hawkins was equally devastating, bulldozing through tackles with bruising runs that set the tone for Walcha's forward dominance. Halfback Matty Tisdell was instrumental in organising the forwards, barking orders and ensuring quick ball from rucks to keep the tempo high. His sharp distribution allowed the Rams to exploit gaps in the tiring Barbarians' line. The Rams' bench played a pivotal role, injecting fresh legs and maintaining the high intensity. Replacement forward Enda Love powered through the middle on a number of occasions, while the backline substitutes added flair, contributing to a mountain of tries in the second half.

In the end, the Walcha Rams were simply too strong, running in a total of 12 tries to secure a 76-5 win. The performance showcased Walcha's depth, physicality, and attacking flair. The bench's seamless integration ensured there was no let-up in momentum. The win clinches the Minor Semi Final for both 1st Grade and Reserve Grade. An excellent achievement for the club.

NEXT WEEK

The Walcha Rams 1st Grade take on the Armidale Blues in the Major Semi Final with the winner getting a spot in the Grand Final. Reserve Grade are also in the Major Semi Final taking on Tamworth in Armidale.

Major Sponsors



Red: TA Field Estate P/L, Davidson Cameron & Co, Elder Rural Services, Super Moto New England, Agriforce Machinery and Marchant Bros.

White: Branga Plains Pastoral Co, S.N. Nivison, Nutrien Boultons, Nerstane Merino Stud, MTA Travel, The Bolt Inn, Sarah Day MTA Travel, Walcha Hire, Richos Rural and Peter Norbury Motors.

Club: Merlanie Pastoral Co, D&C Kermode, DW & AM Cameron, Thomas Foods, Walcha Vet Supplies, Ben Nevis Angus, Walcha Law and Commercial Hotel.

HIGH SCHOOL TASTER DAY

Year 5 & 6 students

Term 3: Wednesday 27 August 2025

including Careers Expo + Science Week



ORIENTATION DAYS

for Year 6 students entering
Year 7 at WCS in 2026
Term 4: Thursday 20
& Friday 21 November 2025

RSVP

Please contact the school now to register for our transition programs



WALCHA CENTRAL SCHOOL

PHONE 6777 2777 - 154E NORTH STREET WALCHA NSW 2354

WWW.WALCHA-C.SCHOOLS.NSW.GOV.AU

*A Journey of Learning
Kindergarten to Year 12*

what's the goss

with AJ Cross



It was reported here last week that former Walcha resident Stella Dunn, who left Walcha at a very early age, won a gold medal at the World Benchrest Shooting Championships in Finland. The following day Stella's father Andrew followed in his daughters footsteps when he picked up a bronze medallion after finishing 3rd out of 96 competitors. Hill Street residents Peter and Beryl Dunn are very proud of the achievements of their son and granddaughter.



Andrew and Stella Dun

Congratulations to the Walcha Rugby Club after both their 1st Grade and Reserve Grade teams finished Minor Premiers in the New England competition after the final round was played last Saturday. The Rams belted the Armidale Barbarians 76 – 5 in A Grade, while the Reggies received a forfeit in Reserves. Best of luck to both teams when they play in their Major Semi Finals this Saturday at Bellevue Oval.

...

This may have been the first time both the Rams 1st and 2nd Grade teams have finished

Minor Premiers in the same season. Having scrolled through the Rams Bible *Memories From Scrum and Ruck* written by Graham Croker, as well as talking to a number of senior players, no evidence could be found to suggest the feat had been achieved before. Please have no hesitation contacting me if you are aware of anything different.

...

Veteran Walcha athlete Taddy Macfarlane competed in the Gold Coast Marathon a few weeks ago where he won his 10km age division 80 to 84 years in 1 hour 3 minutes, his son Robbie placed 5th in the 45 to 49 years division and his granddaughter Layla completed her 5km journey in 25:30 minutes for 15 to 17 year olds. The day after the big local snowfall Taddy headed off to Tamworth to compete where he reckons the 3 hour trip down due to the conditions and the return journey home were much more difficult than the race itself. Taddy did mention his better half Margie reckoned he had 'rocks in his head' for travelling to Tamworth in the first place.

...

While putting my footy tips in at the Newie at the same time as fellow tipster Donna Lynch somehow the subject of 'brain freeze' entered the conversation. I told Donna that would be 'sphenopalatine ganglioneuralgia', explaining it was one of my trivia questions years back.

...

Talk about from the Penthouse to the Outhouse in 24 hours. Last Saturday 9 hole golf competition organiser Johnny McCormack complied 16 stableford points to win the event before heading out again the following day where he notched up 18 points for 18 holes

to finish as the wooden spooner. When I asked 'Macca' if he had only played 9 holes on Sunday his answer can't be printed here.

...

Gee it was great to see plenty of people turn up to support the 2025 Lexus Melbourne Cup Tour last Friday whether at the street parade, civic reception at the Bowling Club, community lunch at the Men's Shed or the post parade community afternoon at McHattan Park. Wouldn't mind a dollar for every photo taken with the Melbourne Cup.

...

Former Walcha Musical Society member Hazel Cameron, who I had the pleasure of participating in a few shows with, will be farewelled at St Paul's Presbyterian Church tomorrow, Thursday 21 August from 2.00pm. May Hazel Sophia Cameron Rest in Peace.

...

A memorial service for former Walcha resident Jason Norris will be held at Valla Beach Nature Reserve this Friday 22 August from 10 am. May Jason Charles Norris Rest in Peace.

...

Big Wigs of the Week NRL Rd 24 Newie – Michelle Schaefer somehow Picked the Card ... How? Good on ya Shell; BC – Biekie Brazel 14pts; TBW Cafe – Leanne Presnell, Martin Wratten; Vet Supplies – DJ Bird; Apsley – Brian Smith, Amanda Swain, 'Hook' Cross, Steven Avery, Barry Partridge all 12pts. With 3 rounds remaining good luck to all tipsters in with a chance of picking up prizemoney in the various competitions. The Newie have set their End of Season Party Saturday 13 September from 12 noon.

advocate sport



Netball

With just two more rounds yet to be played before the finals of the winter netball season, the Walcha Opals and Diamonds both had strong wins over their opposing teams. Opals convincingly defeated VIP Fireflies 32-9. Diamonds defeated VIP Stars, the team on top of the ladder, 17-4. Sapphires and Pacifica both had close matches, with Sapphires conceding to ASCS Uralla 6-8 and Pacifica came close to defeating the team on the top of their ladder, but conceded the match at full-time 28-31. Players of the Week were Sapphires - Charlie Makeham, Opals - Hannah Marchant, Diamonds - Alice Swilks.

Wednesday Golf

After witnessing the snowstorm debacle at the golf course last week, we can only give a humongous "shout out" to the wonderful clean-up crew, that had the front nine holes back in order for the girls to play on Wednesday. Due to the recent bad weather on Wednesdays, the Ladies golfing program has changed somewhat, as some of the programmed events require the 18 holes to make the event legitimate.

A stableford round playing the front nine holes twice was played on Wednesday, and the trophy was donated by Sally McCormack.

The winner was Jenny Lisle with 33 stableford points, and sweepstakes were won by Penny King, also with 33pts,

Sal Rutherford, 32 pts and Ann Martin also with 32 pts. NTP on Hole 3 was Pauline Carter, Hole 9 was Pip Monie, and Simone Sweeney claimed second shot on Hole 7. All being well, today's round is a 4 ball multiplier, draw for partners, with Vicki Heffernan and Jill Burnell donating the trophies.

At the Nineteenth

A stableford round was played for a trophy donated by Bill Fletcher last Sunday which attracted 28 players, where Club President Miles Archdale survived a three way play-off with Jenny Lisle and Sue Partridge to win the event after all three players racked up 34 points each.

Sweepstakes went to the two runners-up, Ross King 33, Dion Bird 31, Michael Stackman 31 and Col Berry 30 on countback from Club Captain Will Brennan (surprise, surprise).

Sharpest shooter at the 3rd pin was Vicki Heffernan, whereas no player was clever enough to reach the beach on either 9 or 18.

Last Sunday was meant to be the annual Mixed Foursomes Championships, but due to the state of the 13th fairway the event was postpone to a date to be rescheduled although play went ahead in the stableford round despite the wet conditions last Sunday.

Last Saturday the Weekly 9 Hole Competition was won by organiser John McCormack after he accumulated 16 stableford points to sneak home from runner-up Sue

Partridge on countback from Vicki Heffernan and Pete Whellan all on 15 points. No player was accurate enough to register for the NTP on 3.

This Sunday is the annual Workplace Challenge Three Person Ambrose where New Hotel publican Peter Berry is in charge of supplying the prizes.

Ladies Bowls

Last week Wendy Moore and Lee McCoy who played in two positions had a win against Jan Cross, Janice Rizzi and Rosie Aitken in a very enjoyable game. It was a close tussle until the end when Wendy and Lee streaked away. The AGM is being held tomorrow in the clubhouse commencing 10.00am due to Hazel's funeral at 2.00pm at the Presbyterian Church. Those attending her funeral please wear bowls uniform. We will be joining a guard of honour when leaving the church.

There is still time to enter the Regional Championships. The notices are on the board along with other invitations. There is no social bowls tomorrow.

Bowls

The last round of the competition triples will be played this Saturday 23rd at 9.30am. Hopefully the weather will hold out. Thursday bowlers had a game of consistency. It was good to see Peter Hayes back on the green again.



In Memoriam

Robbie Brazel

19/11/63 - 16/8/2017

Always in our hearts

Public Notice

DR GENEVIEVE FREER

Phone 6777 2068 0429 668 583

Walcha Law - 02 6777 2066

Bree Curtis – Justice of the Peace

Available by appointment only.

No charge for JP services.

Church Service at Nowendoc Church,
2.00pm this Sunday.

Meeting Notice

Walcha Support Group Thursday 28 August
WCCC Rooms Middle Street. NO relaxation
this month. MEETING: 1.00pm sharp with
Guest Speaker Dr Ali Jones.

Position Vacant

**National Parks & Wildlife Service
Office Cleaning Contract**

Two separate cleaning contracts for twice a
week cleaning at:

- 145 Miller Street, Armidale
 - 174W North St, Walcha
- Must have ABN and Insurance

For More Information contact:
Cecilia Brennan: 6777 4720



church notices

ANGLICAN

August 24

9.30am Lord's Supper

August 31

9.30am Combined Service with
Presbyterians at Anglican Church

Phone 6777 2543 or email:
walchaanglican@gmail.com

PRESBYTERIAN

Walcha, every Sunday 9.30am,
Youth Group every Saturday 5pm – 7pm,
during term time.

All welcome. Phone 6777 539.

CATHOLIC

Sunday Mass 10.00am

Walcha Baa Baas 30 year re-union

By A.J Cross

The Walcha Baa Baas held a reunion at the clubhouse last Saturday to primarily celebrate the inaugural 'Golden Oldies' team that toured New Zealand in 1995, however players who have represented the club since were also in attendance.

Twelve members of the 17 player New Zealand squad were present to enjoy a roast beef luncheon washed down by a beverage or three while reminiscing 'The Good Old Days'.

Sadly one of the Baa Baas pioneers Rod Whyllie and Graham Yeo are no longer with us, whereas Richard Lyne, John Maher and Mark Whitehead were unable to attend for various reasons.

On a personal note it was great to catch up with some of our 2009 West Australia tourists including Barraba trio Dave Penna, Shane Middlemiss and John Bishton who were with us on that trip.

Well done to organisers John Burnell and Mark Whitehead on the time and effort they put into the function, unfortunately Mark couldn't be there due to his recent surgery.



1995 Team – Back Row: Mark Whitehead, David Lisle, John Burnell, Gordon Barbara, Buster Fenwicke, Daryl Bath. Middle Row: John Tourle, David Wauch, Graham Yeo, Phillip Dutton, John Maher. Front Row: Rod Whyllie, Rob Fagan, Bob Burnell, Gordon Williams and Richard Lyne. Absent from photo Scot McLeod.

Ladies! This is for you

Would you enjoy a day of relaxation and entertainment? Let the Quota Club know. Phone Pam 0429 772 419, Chris 0437 772 333 or Julie 0427 780 132 before Friday September 5 or email julieyates512@gmail.com.

Saturday 13 September is the day to mark in your calendar. Starting at 11.00am at the Walcha Bowling Club, canapes will be served with a complimentary glass of champagne. See the new Spring fashion with parades by Emporium on Derby, Paper Dolls and New Birds. These are all local businesses.

But that's not all! There will be a skin care and make-up demonstration with Lisa from Glamour Empire. Come and find out about Lisa and what she can offer you through her business Glamour Empire.

You can visit the trading tables and enjoy a beading display. Prizes galore will be up for grabs from raffles, lucky door and lucky spots.

A delicious lunch will be provided. All money raised will support our local charities. Local project that Quota support includes audio books for the Walcha Library, Show Society Cancer bus which enables locals to have free checks, books for local Walcha schools, scholarships to encourage girls at Walcha Central School to continue their education, and Walcha Youth Group. Many families have been supported in times of hardship. Quota has provided softfall at Quota Park for the comfort and safety of children playing there and the provision of additional seating around town.

The cost per person will be a very reasonable \$40. Pay at the door but we do need to know numbers so RSVP by Friday 5 September. Bring your friends and relatives for a fun day. Support this fund raiser by the Walcha Quotarians and have a very enjoyable and informative time as well.

telecottage
WALCHA

Design, print and secretarial services

- Photocopying and laminating
- Business cards, stationery, invoice books and labels
- Catalogues, flyers and more...

P6777 1111

wtc@
walchatelecottage.
com.au



Nick Moore PLUMBING & EXCAVATION SERVICES

WALCHA & SURROUNDING AREAS



Highly qualified and experienced plumber
All aspects of Plumbing and Gas Fitting
Wood heater installation
Roofing and Guttering
Gold License No 59555C

Nick 0418 691 306

nickmoore203@yahoo.com.au

Katy 0422 034 660

LUX ELECTRICAL

LEE HARRISON

0448 840 461

lee.harrison@electrical@gmail.com

LICENCE NO. 480735C

CCTV | SECURITY SYSTEMS | RE-WIRES | LIGHTING & POWER | SAFETY
SWITCH UPGRADES | RENOVATIONS | INSTALLATIONS & MAINTENANCE
| FULLY LICENCED & INSURED



Building Maintenance Roofing

RURAL BUILDING REPAIRS HOME MAINTENANCE GUTTERING — DOWNPIPES

TIM - 0415 668 791

bmr4@bigpond.net.au
Roof Plumber

Licence 1002472

Andrew McGuffog

CONTRACT FENCING

NO JOB TOO BIG OR SMALL

- All types of rural fencing
- Caterpillar Skidsteer hire with a range of implements

Andrew..... 0428 360 985

James..... 0412 800 451



PETER NORBURY MOTORS MECHANICAL

117E Fitzroy Street

General Maintenance • Servicing • Pink Slips • Wheel Alignments & More

Monday – Friday

6777 2944



WALCHA LAW

- PROPERTY • ESTATES • WILLS
- POWER OF ATTORNEY & ENDURING GUARDIAN DRAFTING
- FAMILY LAW & MEDIATION

Sophie Thomson

Director/Solicitor

James Levingston

Consultant/Solicitor

6777 2066

info@walchalaw.com.au

– Local lawyers for over 76 years –
Incorporating Patterson Byfield and Bryen

**MOBILE-FIX
AUTO+AIR**
Mobile Repairer & Airconditioning Specialist
Licensed Vehicle Repairer
Lic.No.46696 RTA Lic.No. AU22616
PATRICK STACE – WALCHA
Mob. 0428 780 077 Ph. 6778 0595

**A G W
RURAL CONTRACTING**
GPS Equipped boom spraying
Andrew Wauch 0427 549 748

CHIROPRACTOR

K Samantha Goor

B.Sc. Anatomy (NSW) M Chiroprac (Macq)

Tuesday & Friday from 9.00am

6777 1340

AQF3 ARBORIST
Tree lopping & removal
Truck
Bobcat
Post hole digger
Trencher
Woolshed Cleaning
Scott Kermode
0427 100 889
TREETOP
services
treetopservices@bigpond.com

New England IT
**ONSITE COMPUTER
SERVICE + SALES**
Tim Sutton 0414 874 523



Andrew: 0427 549 748

Toni: 0421 972 354

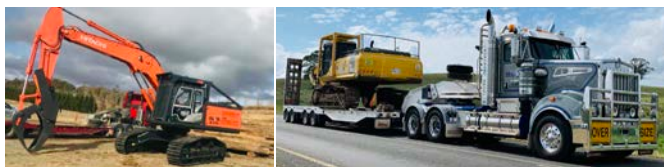
MOUNT VIEW GRAZING
Rural Fencing - Quick Spray
Tractor & Post Driver
ADAM TATE 0457 772 515
mount.view@outlook.com.au

DISCLAIMER LETTERS TO THE EDITOR are submitted on the condition that The Walcha Telecottage as the publisher of The Apsley Advocate may edit and has the right to, and license third parties to reproduce in electronic form and communicate these letters. They are published at the discretion of the Editor and Board. The Apsley Advocate is printed by The Walcha Telecottage, PO Box 116 Walcha NSW 2354. Phone 6777 1111 Fax 6777 1112. The Walcha Technology Co Operative Limited, the Editor and Staff of this Newspaper have published any article here-in in good faith and bear no responsibility in respect to the accuracy of the information contained in such article. Any person or persons publishing material in this Newspaper do so in the knowledge that they shall personally accept any responsibility for the accuracy and other correctness of such articles and also accept full responsibility for the legal consequences if it be found that the article contains any inaccuracies in the contents of any such articles.

DEADLINE MONDAY 4.30PM Editor: Anthea Macpherson. Advertising/Sport: Megan Scrivener, Joscisca Matapakia and Kate Connors.

Marchant

BROS. PTY. LTD. Est. 2000



BULK WATER DELIVERY AVAILABLE

A FULL RANGE OF AFFORDABLE TRANSPORT & EARTHMOVING

Dam construction/maintenance, stick raking, gravel available, road building, site prep, pipe laying and all timber work. Check out our website for the full range of machinery, attachments and services available.

FIREWOOD AVAILABLE DELIVERING NOW

Earthmoving and Heavy Haulage Transport
Jason 0427 490 487 • Jamie 0429 771 351
 02 6777 2024 marchantbros@bigpond.com
 www.marchantbros.com.au



OK EARTHMOVING

SPECIALISING IN ROAD CONSTRUCTION & MAINTENANCE

- Bulldozers
- Excavator 2t - 30t
- Truck and Dogs
- Gravel supply
- Graders
- Rollers
- Skid steers + multiple attachments
- Forestry mulching
- Land development
- Large Dam construction

Peter O'Keefe : 0429 944 821
 Will O'Keefe : 0488 925 845



Proudly servicing Walcha and surrounding districts for over 30 years

WALCHA

BOWLING

& RECREATION CLUB

WHAT'S ON?

Thursday 21 12.00pm – Close

BOWLS 9.30am Ladies, 1pm Social

Friday 22 2.00pm – Close

2.00PM BINGO 6.00PM BISTRO

6pm Raffle tickets meat & vege trays

6.30PM FREE BINGO

7.00PM Raffles and Members draw

BISTRO

• Honey & Lemon Chicken with Rice

• Open Meatball Sub

• Salt & Vinegar Crusted Fish

• Delicious desserts

Home deliveries - town limits only

CATERING NEEDS

Dianna - 0412 536 760 or 5722 6003

Saturday 23 11.00am – Close

5.00PM BISTRO

Sunday 24 11.00am – Close

12.00PM BISTRO

Raffle tickets from 12pm,
drawn 1.00pm.

MEMBERS DRAW
\$1200
 YOU MUST BE A MEMBER
 FOR 2024/2025 TO BE
 ELIGIBLE TO WIN

Up Coming Live Music

Saturday 6 September

Matt Barratt

Saturday 11 October

Yea Copy Duo

Saturday 15 November

Dave Alexander

Saturday 13 December

Matt Barratt Christmas Show

Other Happy Hours

Tuesday and Wednesday
4pm - 6pm \$6 Schooners

Sunday Happy Hour

\$5 SCHOONERS 3pm
FOOTY ON THE BIG SCREEN

Do you live in Walcha Shire? If so you MUST be a member to enter the Club
 Social Membership \$15. Full Membership \$120. PHONE 6777 2077

LINMAC ENGINEERING

IF YOU NEED IT – We make it!

MASSIVE DISCOUNTS
 On products
 in store

**STOCK
 CLEARANCE
 ALL MUST
 GO!**

STRONGER, BETTER, TOUGHER!

- Husqvarna Products
- Chains
- Automotive Products
- Belts
- Oils
- Steel products
- Welding products
- Bare Co products
- Bearings
- Hydraulic Fittings

PLUS MORE!



Check out our facebook page

211N Pakington Street WALCHA
 Phone 6777 2822 Email enquiries@linmacengineering.com.au