

THE APSLEY Advocate

CIRCULATION 2000 – P 02 6777 1111 F 02 6777 1112 wtc@walchatelecottage.com.au walchatelecottage.com.au

3 December 2025

**Nutrien
Boulton's**

**Friday 5th
December**

**48 EU Angus
Heifers**

**Avg 307kg
curfewed**

**21 EU Angus X
Heifers**

**Avg 314kg
curfewed**



AuctionsPlus

For Further information contact:

**Dan Coulthurst
0419 879 793**

APSLEY ARMS HOTEL

**Christmas Functions,
Christmas Day &
New Years Day**

**Lunch and
Dinner
BOOK NOW!**

GANESH

0449 118 026

33n Derby Street, Walcha 2354

DRINKS MEALS ACCOMMODATION

Australian Stockman Rugby Tour for Hunt

Walcha Rams front rower Richard Hunt recently returned from Fiji on a tour with Australian Stockman Rugby.

Stockman Rugby, established in 2013, selects players with country roots from all over Australia to form an Australian Country touring team promoting the classic Aussie values of integrity, mateship, hard work and selflessness. Run by and supporting Little Windmills, a charity providing relief through financially assisting families of children who are seriously sick, injured or have special needs, allowing mums and dads to focus on the wellbeing of their little ones'

Past tours include Australia, Ireland, Argentina and England and the program aims to develop the opportunities of grass root players while tackling and promoting men's health related issues.

Kicking off the tour, Richard and the team played in Sydney against the Australian Police Force resulting in a 29-29 draw. While in Fiji, they played Republic of Fiji Military Forces (24-41 loss), claimed a win against Malolo Rugby Club (38-31) and went down to Fiji Under 23s (19-36).

When he wasn't playing rugby, Richard visited local schools engaging with the local kids and sharing some Rams merchandise. The 2026 tour is scheduled for Spain and France. Walcha Rugby Union Football Club congratulate Richard on his selection and are proud to support Richard with his tour and encourage any future Rams to consider opportunities with the Australian Stockman Rugby.

Well done Richard.



Above: Rob Puliueva (C), sponsor Mitch Donovan, Richard Hunt and coach Ben Moran Below: Richard giving some Walcha Rams Merch to local school kids



**BUY 2 X Q-DRENCH 10L OR
\$2000 OF ZOETIS PRODUCTS
AND RECEIVE A
BONUS FREE
CARTON OF BEER**

* Limited to customers 18 years and older



WVS
WALCHA VETERINARY SUPPLIES

Merry Christmas

6 Aberbaldie Road Walcha. Ph 6777 2588. www.wvs.com.au



CIVIL CONSTRUCTION EXPERTS

OUR PLANT:

- ✓ D6T Dozer - 18ft Stickrake + GPS + Lazer grade
- ✓ 5t, 13t, 20t, 36t Excavator GPS, grabs, screen
- ✓ 2t - 12t tipper & dog, 40t moxi, water cart
- ✓ Positrack, tractor, augur, post driver

OUR SERVICES:

- ✓ Wet and dry hire options
- ✓ Driveways, dams, pads, quarry
- ✓ Sheds, bridges + farm infrastructure
- ✓ Design & Engineering services

CONTACT GLEN
0403 726 780
OXLEYCIVIL.COM.AU
VISIT FOR A FULL RANGE OF
EQUIPMENT & SERVICES

**COMPETITIVE
RATES**

around the traps



By SIMON NEWTON

The weather had us almost tricked into thinking we were heading back into winter on Tuesday morning with that cold wind which was a shock to the system. A light dusting of snow also fell on the highest of elevations throughout Tasmania, Victoria and NSW which would have had the fireplaces going again in those areas. The wind has been horrendous over the last week and although those storms delivered some good drops of rain last week, they were destructive. Parts of the district got winds that ripped out trees and made another huge mess for landholders. Parts of the northwest saw roofs ripped from homes and large areas went without power for some time.

The federal government announced last week that it has done a deal with the Greens to overhaul the country's environmental laws. This news shouldn't come as a shock after the Labor government elected in 2022 to pass laws to make it harder for businesses and limit industry's ability to have a say on new legislation. Shortly after, the Labor government announced it would shut down the live sheep export trade which was just politics to Labor. The government has also brought in new climate reporting rules which is set to cost the agricultural industry millions and impact the larger agricultural businesses, well for now that is, and it was passed into legislation almost unnoticed as it was backed by the Greens and the Teals simultaneously. The interesting part is that almost everybody is unaware of these new laws and the impacts they could have on an agricultural business. Agriculture is in for a complete overhaul with multiple changes being forced on us by our government and its attempt to meet net zero emissions.

Last week, local member Barnaby Joyce, officially quit the National Party and announced he will serve out the remainder of his term as an independent. Mr Joyce departs the Nationals after 30 years as a member and wouldn't confirm if he was going defect to Pauline Hanson's One Nation Party. If Barnaby returns to the senate I'm guessing it will be with One Nation, he's a front row forward and front row forwards want to be in the ruck, so if he stays in politics which plenty of people want him to, that's where I think he wants to be, in the ruck in the senate and not on the back bench.

Livestock physical markets continue to swell as we head into Christmas with the market holding firm under these excessive numbers. For the last month; Dubbo, has yarded nearly 10,000 cattle per week, Gunnedah nudging 4500 hd per week while Tamworth has been 3000 plus per week. These numbers are excessive for this time of year, but it goes to show the amount of cattle throughout the northern parts of NSW and the better season we have had throughout these areas. The livestock are presenting extremely well with plenty of weight so the dollars per head are really starting to add up for those who are selling. I can't remember seeing these large numbers of cattle run through our selling centres since the drought. Just a reminder that the final 2025 sale dates for Tamworth prime cattle and sheep will be 15 December, last store sale the 12 December while Gunnedah prime cattle will be the 16 December. AuctionsPlus final cattle sales will be 19 December, while the final sheep and lamb sales will be held on the 16 December.

3708 head of cattle were yarded in Tamworth on Monday and it was quoted as firm to slightly cheaper, especially on the secondary cattle. Restocking cattle sold to a top of 536c/kg for Angus weaner steers, feeder heifers topped at 478c/kg while feeder steers made to 526c/kg. Heavy cows stepped back off the prices from the previous week and topped at 417c/kg for prime heavy weights, while the second run of 3 score cows dropped by as much as 30c/kg to top at 404c/kg. 4563 sheep and lambs were yarded in Tamworth on Monday with new season lambs to the trade quoted as being \$18 per head cheaper topping at \$260 while extra heavies remain firm to top at \$365. Mutton market was cheaper with the best of the merinos making \$200 and the XB topped at \$175.



WALCHA LAW

- PROPERTY • ESTATES • WILLS
- POWER OF ATTORNEY & ENDURING GUARDIAN DRAFTING
- FAMILY LAW & MEDIATION

Sophie Thomson
Director/Solicitor

James Levingston
Consultant/Solicitor

6777 2066
info@walchalaw.com.au

– Local lawyers for over 76 years –
Incorporating Patterson Byfield and Bryen

Paula Jenkins – *Nirvana : A Pilgrimage*

An upcoming exhibition at Tamworth Regional Gallery opening Friday 12 December marks the pilgrimage of two artists. Walcha painter Paula Jenkins, along with Tamworth ceramicist Sasha Jury Radford, will be exhibiting their extensive work in this exciting, vibrant and intensely meaningful exhibition.

The works of each artist complement each other beautifully, showcasing their independent journeys inspired by recent travels.

Paula presents 32 paintings and a poem in this exhibition, marking her most extensive body of work to date. Developed over the past 12 months, the works draw inspiration from her time hiking through the alpine environments of New Zealand's South Island during winter last year. The vivid memories of crisp air, quiet expanses, glacial streams, turquoise ice, and the commanding presence of snow-capped mountains lingered long after her return home. To Paula, this landscape is Nirvana—a place of profound peace and harmony. Through this exhibition, she translates her connection to place through colour and marks, using colour as a bridge between self and landscape.

In this exhibition Sasha's ceramic sculptures, totems and suspended works are inspired by her pilgrimage of walking the Camino de Compostela. Following these ancient paths in

Spain, she has found herself drawn towards the worn stone paths, ruins of medieval villages, stunning landscapes and the appreciation and significance of endurance.

The two creative disciplines – painting and ceramics – meld beautifully in this must-see exhibition about travelling journeys. Their works intertwine to create a visual narrative of landscape, halting time and revealing the significance of place and presence. A truly refreshing and vibrant showcase.

'Nirvana: A Pilgrimage' opens **Friday 12 December from 6pm** at Tamworth Regional Gallery.



Paula's exhibition works include:

Top: 'Enormity' 122 x 152cm Acrylic on paper,
Left: 'Hooker Valley Flowing' 76 x 57cm Gouache
on paper. Inset: 'Footbridge' 92 x 122cm Acrylic
on polycotton. Above right: 'Emerald Lake'
40 x 50cm Acrylic.

Nutrien Boulton's

Stock and Property Watch

www.nutrienharcourts.com.au

White picket fence and all



Situated in the quiet village of Niangala

- This home is situated on a level block with the additions of a double garage
- Two bay parking shed and workshop
- The property backs onto the Niangala Rec ground and hall, which hosts many wonderful events throughout the year.
- The property is northerly facing with an outlook over the local grazing country.
- The first time in nearly 50 years this property is to be offered to the market, with 3 bedrooms warmed by a wood fire in the open plan lounge room.
- This property is ideal for those looking to escape the town life or for the first home buyer looking to enter the market. Located a short 45km drive to Walcha or 70km to Tamworth.

Contact Mat Larkings 0427 002 427



3 bedrooms 1 bathroom 3 car spaces

\$250,000

Nutrien Boulton's Walcha ■ 3n Derby Street Walcha ■ 6777 2044

letters to the editor



Walcha landowners are currently being approached by EnergyCo representatives seeking access to private properties for ground investigations relating to the New England REZ. Representatives have implied that access is required and have even suggested that security may be brought onto land if consent is not given. Let's be very clear: EnergyCo has no lawful right to enter private land without voluntary landholder permission. These aggressive tactics are designed to pressure people into signing access agreements that they do not have to accept. This has been confirmed in correspondence with EnergyCo, Melissa Maurer, Community Engagement Manager.

Landowners should feel empowered to say no. These studies are not for our benefit — they are required for EnergyCo to progress their project approvals and construction plans. While they claim access is needed to design a route that "suits landholders," the real objective is to advance the project, not protect our land, livelihoods, or biosecurity. Property acquisition managers are incentivised to get agreements signed and are using intimidation and strong-arm tactics to achieve that outcome. They will also use language to make you feel that your case is unique or "special". Walcha must stand united and refuse to be divided or bullied. We continue to hold — do not sign anything.

Don't hesitate to contact High Country Guardians for further information or support. If you find someone on your property call the police, take video and contact supports. If you need or want further information please contact Walcha High Country Guardians Daniel (0448 776 499), Aaron (0418 602 767) or Gary (0402 432 132).

Anna Young
Walcha High Country Guardians

BRETT AG

Contracting



CONTRACT SOWING AND BOOM SPRAYING

3.6m Williams double disc seeder
6m Williams double disc air seeder
18m trailing Stoll boom spray
Prime mover with drop deck widener
8t rigid crane truck with groupers
Fleet of 4 modern Deutz Fahr tractors
with GPS auto steer

KERRY BRETT: 0409 273 228

JAKE BRETT: 0413 652 530

The 'Have Your Say' period with EnergyCo has been **EXTENDED**



MUST now be received by 12 December

We need as many letters to EnergyCo and Cc'd to politicians as possible (even a short paragraph). Remember to write your object to the route and If you are an affected farmer do not forget to write that you will not be negotiating with them, they will need to go down the path of forced acquisition.

Email: nerez@energyco.nsw.gov.au or

Mail: EnergyCo – New England REZ Transmission Project, Suite 7, 175 Rusden Street, Armidale NSW 2350.

Re: EnergyCo's re-routing of the New England Renewable Energy Zone (REZ) Transmission Lines from the proposed Central South Hub at Walcha to Bayswater.

Also: send to Penny Sharpe (NSW Minister for Climate Change, Energy, Heritage and the Environment) at office@sharpeminister.nsw.gov.au, as well as the Shadow Minister James Griffin, Premier Chris Minns, Treasurer, Opposition and our local MP Brendan Moylan.

Need help? If you need assistance with your email or help with writing feedback, please contact either:

Kate Mackaway kamack88@hotmail.com OR the **Walcha High Country Guardians Committee** whcg.info@gmail.com

The Perfect Blend

Walcha locals, media, regional representatives and politicians turned out in strength last Friday for a celebratory brunch at the Walcha Coffee Roastery. The event marked Walcha Coffee's remarkable achievement in being named the 2025 NSW Business of the Year, as well as taking out Excellence in Micro Business for both the New England North West region and the entire state.

Emceed by Tim Coates, Business NSW Regional President for New England North West who spoke very highly of the achievement and how proud he was that the NSW Business of the year had come out of his region. Ensuring the crowd knew the prestige of the award, commenting that the NSW Premier, NSW Treasurer, along with shadow ministers were all in attendance on the night. He went on to say that "the Business NSW awards are judged by nine to ten different people, and to win, Walcha Coffee was deemed worthy of the top prize by numerous judges. And on speaking to one of the judges he learnt that it was Walcha Coffee's genuine passion that secured the win."

Cameron Hayton said how it all started with a small \$400 roaster in their kitchen and it grew from there. Now they supply numerous retail outlets from Brisbane in the north to Kiama on the South Coast.

Other dignitaries in attendance were Cllr Gary Olrich representing Walcha Council. Hon. Barnaby Joyce MP — notable given the substantial national news surrounding him this week. Brendan Moylan MP offered warm words about Walcha's spirit and the role regional enterprise plays in the fabric of the state.

For Walcha Coffee, the honours are significant. For Walcha, they are a reminder that this region produces not just great coffee, but world-class dedication, imagination, and tenacity.



Left: Tim Coates, Business NSW Regional President for NENW.
Right: Barnaby Joyce MP, Cameron Hayton and Brendan Moylan MP.

Yarrowitch Campdraft set to deliver the best

~ FRIDAY 5 – SUNDAY 7 DECEMBER ~

The Yarrowitch community is gearing up for one of the most anticipated events on the regional sporting calendar—the annual Yarrowitch Campdraft. With strong nominations and preparations in full swing, this year's event promises an action-packed weekend for riders and spectators alike.

Running from Friday 5 to Sunday 7, the program will showcase some of the finest campdrafters from across the district and beyond. A major highlight of the weekend will be the Waldron Stock Haulage Open Draft, featuring two thrilling rounds of competition and a prize pool exceeding \$20,000, along with trophies and a service fee to WP Smooth Talker valued at \$3,300.

This event would not be possible without the incredible support of our sponsors. The Yarrowitch Campdraft Committee extends sincere thanks to the following businesses and individuals for their generosity:

Smooth Talker, Waldron Stock Haulage, Maloney Livestock Transport, OK Earthmoving, Walcha Veterinary Supplies, Ben Nevis Angus, Betts Transport, Wingham Beef Exports, New England Hotel Motel, Elders, APL Guyra Armidale, Walcha Law Solicitors, Martin's Lime, Walcha Coffee, Superair, Gooch Agencies, Brady's Saddlery, Burragillo Farming, Kempsey Stock & Land, Nutrien Boulton's, GJ Kennedy & Co Pty Ltd, Ben Wickham Farrier Service, Tamworth Equine Veterinary Centre, The Station Angus, Diamond H Saddlery & Country Clothing, and Stylewest Elite Performance Apparel.

With excellent facilities, quality cattle, and the dedication of hardworking volunteers, the 2025 Yarrowitch Campdraft promises a well-organised, family-friendly weekend. The Buddha Belly Kitchen will be running the canteen, serving delicious meals for breakfast, lunch and dinner, along with a fully stocked bar to keep everyone refreshed.

The Yarrowitch Campdraft is a proud celebration of community spirit and generosity. We warmly invite everyone to join us at the Yarrowitch Showground and experience the excitement of this iconic event.



Above: Last years Open Winner, Ben McNaughton.



Right: Troy Tape in action at the 2024 Yarrowitch Draft.

REAL ESTATE & LIVESTOCK
pitt.son.walcha@bigpond.com
www.pittsons.com.au

Pitt Son's

OFFICE 6777 2000
Sam Payne 0428 667 404
Ron Vincent 0427 775 821

Great Location



- Spacious open plan living.
- Three generous size bedrooms all with built in robes and ensuit to main bedroom.
- Main bedroom has great views to the north.
- Lovely kitchen with dishwasher and many cupboards.
- Free standing wood fire, covers all living area.
- Downstairs you enjoy formal office, workshop, and very spacious storage area.

\$520,000



Locally owned and operated

ADVERTISEMENT



Walcha Little Athletics

\$11,733 was secured for Walcha Little Athletics from the Community Building Partnership program to purchase new equipment. I caught up with Walcha Little Athletics' coordinator Rebecca Whillock to deliver the funding which will go a long way in expanding the current athletics programs on offer and make transporting that equipment much easier. Walcha Little As has around 40 registered participants who get to try a range of sports and having better equipment will widen that scope.

November visit

It was excellent to get down to Walcha on Friday with Business NSW honouring Walcha Coffee for taking out the top gong at the NSW state business awards. Congratulations again to Cameron and his team for their achievements.

While in Walcha, I also caught up with and thanked the paramedics from the Ambulance Station who were incredible in their response to the incident at the Motorcycle Rally's demolition derby.

Rejection of the new transmission corridor ePetition

A Parliamentary ePetition opposing the re-routed transmission corridor from Bayswater to Walcha. It is at 6000 and needs 20,000 to be debated in Parliament. To view and sign, visit: www.parliament.nsw.gov.au/la/Pages/ePetition-details.aspx?q=jz_sF2FRsWHj_36IRBvdcw

Youth crime Bill misses the mark

The Minns Labor Government rejected the NSW Opposition's amendments to address Doli Incapax in the Children (Criminal Proceedings) and Young Offenders Legislation Amendment Bill 2025.

The amendments would have strengthened laws for repeat youth offenders, bringing Doli Incapax in line with the Queensland model.

The Bill in its current form only tinkers at the edges. If the Government were serious, they would have shown some bipartisanship and worked with the opposition on our amendments. I will keep pushing this in Parliament.

Legal Aid Seniors Diary

The very popular and free Legal Aid Seniors Diary is back for 2026. It is full of useful tips and legal information on avoiding scams, goods and services, driving and fines, Elder abuse, money and Centrelink, and much more. The Seniors Diary features a calendar, important dates and puts legal information in an understandable and easy-to-read format. I encourage seniors across the region to secure their copy. The 2026 Seniors Aid Legal Diaries are free but limited to two per household. It is available by contacting the Armidale, Moree and Inverell electorate offices. The diary's cover features artwork by Aboriginal artist Shelby-Rae Lyons.

Brendan Moylan MP

MEMBER FOR NORTHERN TABLELANDS

Suite 1, 175 Rusden Street, Armidale NSW 2350

02 6772 5552 (Armidale) 02 6752 5002 (Moree)

northerntablelands@parliament.nsw.gov.au

[brendanmoylanmp](https://www.brendanmoylanmp.com.au) [brendanmoylanmp](https://www.brendanmoylanmp.com.au)

Suites 2-6, 161 Balo Street, Moree NSW 2400

PO Box 77, Armidale NSW 2350

www.brendanmoylan.com.au

NATIONALS for Regional NSW

Authorised by Brendan Moylan MP. Funded using Parliamentary entitlements.

Twilight Markets a hit

Last Saturday, 29 November, thirty Twilight Market stall holders had to make a last-minute move from the proposed Derby Street site to set up in Walcha's Multi Purpose Centre due to the weather looking unfavourable. However word of the move circulated quickly and the markets were a huge success.

As the clock struck 1pm, the hall filled with smiling faces ready to browse and shop around all the different trade stalls. The atmosphere was wonderful with lots of people catching up and ticking off their Christmas lists, as kids played and enjoyed having their faces painted. Stall holders were happy and had a great day.

Logan Stace worked hard to keep the crowd caffeinated and hydrated with his great coffee and cool drinks, while Bellinghen Pasta and Pho Plus Sushi kept everyones hunger at bay as they shopped the day away.

The afternoon finished with a visit from Santa, arriving in a Brian Smith Timber Transport truck. Santa made sure all the children had plenty of lollies before he headed back home.

Organisers would like to thank the stall holders, market supporters and Santa for starting off the silly season with his magical visit.



thumbs



- 👍 To Jodie Provost, the Walcha Central School Ag Team, sponsors and volunteers for the extraordinary work they put into pulling off a fantastic Northern Schools Steer Show under extenuating circumstances. Amazing job.
- 👍 To Jodie Provost – you are such a superstar teacher! Especially your adaption to obstacles to the Steer Competition. WCS are lucky to have you.
- 👍 To Walcha Tyre Service for great service to customers and the community.
- 👍 To Albert Connors, Alissa Wall and Bruce Rutherford for their quick action to clear trees off the Niangala Road during the storm enabling traffic to get through.
- 👍 To the many volunteers and ex-WCS Ag students who assisted with the Steer Show.
- 👍 To Mel and her Pre-school team for the amazing graduation ceremony held for the pre-school leavers going into Kindergarten.
- 👍 To Dino Vannucci for 30 years of service to the Walcha Community. You will be sadly missed.
- 👍 To Walcha Council for not having a return and earn drop off location.

Contributions will be received in person, by phone or email and must be accompanied by your name and contact details. They will be printed at the discretion of the editor.

Chopping over the ditch

Local axemen, Mitchell and Austin Scrivener travelled over the ditch in mid November to compete at the The Royal A&P Show of New Zealand held at Canterbury Agricultural Park, Christchurch.

As members of the NSW Axemen's Association's rep team, both Mitch and Austin competed in the tri-series relay where NSW took on New Zealand South Island axemen. Consisting of several disciplines, Austin was chosen to compete with the stock saw, while Mitch the single saw in all three races of the series. The NSW team, consisting of seven axemen and one axewoman, had a very successful trip and took out the series in a clean sweep.

While at the Royal, the boys also competed in individual events, with the highlight being Austin winning and Mitch placing third in the 2025 Tuatahi Tree Championship.

With a break until 2026, both Mitch and Austin will be back competing in late January gearing up for the largest and longest woodchopping event in the world – The Sydney Royal Easter Show.



Left: Austin heading out to contest the stock saw.
Above: Mitch and Austin cutting the tree in Christchurch.
Photo credit: SMR Event Photography

Dog Trials this weekend

The Walcha Utility & Cattle Dog Trial has been running for the last 4 years and brings dogs and their handlers to Walcha from all over the state.

Kicking off on **Friday | 8:30am** with the **Utility Trial**, where dogs and handlers will face 20 sheep that test versatility, obedience and stock-handling instincts. The Utility Trial is a combination of yard and paddock work, which aims to assess a dog's real-world usefulness with handlers having 15minutes to complete both the yard and three-sheep components combined.

Later on Friday, approximately 3pm, attention turns to the **Cattle Dog Trial** in the Rodeo Ring where competitors will test the dog's instincts and the handler's skill to manoeuvre three head of cattle around a series of obstacles.

These events will be running throughout the weekend, and spectators are welcome to come along and enjoy watching incredibly athletic and intelligent working dogs do what they do best.





WALCHA EXCLUSION FENCING DAY

MONDAY, 15th DECEMBER 2025

Waratah Fencing invite you to attend an exclusion fencing information day at Gleneagles, Walcha.

The day will include practical insights & discussion:

- See the Waratah Exclusion Fencing System up close, including fencing machine demonstration.
- Understand the 'Over, Under, Through' Principle.
- Understand different fence designs including the types of prefabricated wire and post heights available.
- How exclusion fencing can boost profitability & biosecurity.
- The benefits of exclusion fencing for managing invasive species (wild dogs, pigs & deer).
- How exclusion fencing can protect your assets to maximise your return on investment.
- The Waratah team will talk through the benefits, paybacks and results based on the property's existing fence history.

Whether you're looking to build a new fence or retrofit an old fence, the team will work with you to help design the best fence for your needs.

WHEN
Monday, 15th December 2025
10am - 12pm
Followed by a BBQ lunch.

WHERE
"Gleneagles"
91 Gill Road,
Walcha, NSW, 2354
(Look for the Waratah flag)

RSVP
Please RSVP by Thursday, 11th December 2025

RSVP to Ben on
either 0408 659 083
or ben.heffernan@waratahfencing.com.au

If you have any questions please email events@waratahfencing.com.au or contact Ben Heffernan on 0408 659 083

Waratah's innovative range of Australian made fencing systems has been proven in the field since 1884. When you need the best fencing & trellising solutions for your farming enterprise, contact the market leader - Waratah

WARATAHFENCING.COM.AU

Thank you from us!

You're invited to attend

Neighbour Morning Tea

at
Walcha Central School
on
Wednesday 10 December 2026
11:00am

following our K-12 Awards Assembly at 10am

RSVP Monday 8 December
6777 2777
walcha-c.school@det.nsw.edu.au

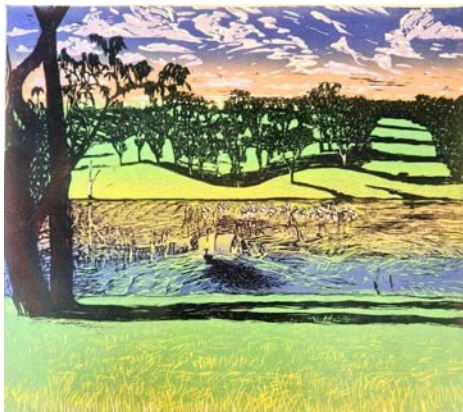
Walcha Gallery of Art Christmas Exhibition



This Friday 5 December at 6.00pm will see the final art exhibition opening of 2025 for the Walcha Gallery of Art.

This Christmas Exhibition is a fabulous way for the Gallery to end the year, offering paintings, prints and sculptures from a great variety of numerous artists.

Exhibitors include: local artists James Rogers, Julia Griffin, Stephen King, Kate Durack, Gemma King (*artwork below*), Jemma Warden (*bottom left*) and Ross Laurie, as well as Sarah Bishop (*left*), Caroline Croft, Kerry Gulliver and Jane O'Sullivan. WGoA looks forward to seeing you Friday at 6pm.



Hearing Clinic closes

Sharon King Hearing centres will no longer be visiting Walcha:

A statement from Sharon King Hearing:

After careful consideration, we will be closing our Walcha clinic. This decision has not been made lightly, and we want to extend our heartfelt thanks to the wonderful Walcha community for your support over the years.

While our Walcha site will no longer be operating, we remain committed to providing you with exceptional hearing care. Our closest clinics – Tamworth and Armidale are ready to continue supporting all of your hearing needs, and our team will ensure a smooth transition for existing and new clients.

If you have any questions, need to book an appointment, or would like assistance transferring your care, please reach out — we're here to help.

Thank you again for being a valued part of our community.

02 6766 2100
Sharon King Hearing Centre

Join us for

Shepherds' watch

CAROLS BY CANDLELIGHT
7PM TUESDAY 23RD DECEMBER 2025
WALCHA PRESBYTERIAN CHURCH
Celebrating Christ through music

Financial Services



- Rural and Commercial Finance
- Leasing
- Home Loans
- Insurance Premium Funding

Kel Penfold

6766 5309; 0427 667 118



**LOCAL
KNOWLEDGE.
REAL RESULTS.**

GIVE ME A CALL 0438 081 736
GEORGE.BERRY@LAWD.COM.AU



GEORGE BERRY
RURAL & LIFESTYLE
SPECIALIST

LAWD.com.au

Local Success at Pasture Wonderland

By AJ Cross

This could have been a first in Pasture Wonderland history when a team consisting of bowlers representing four different clubs won the annual carnival at the Walcha Bowling Club last weekend. Local Graham Marshall joined forces with his cousin Andrew McGuffog from the Uralla Club, long time attendee Glenn Brooker (Comboyne) and Paul Ireland (Wauchope) to clinch the A.S. Nivison Memorial trophy, but only after surviving a count-back.

The top four teams all finished with five wins each which then went to ends, where the winners won 39 ends ahead of runner-up South Tamworth (Scott Sweeney, Steve Graham, Graeme Nicholls and Craig Graham) 37 ends. Third place went to North Tamworth/Walcha (Graeme Cameron, Terry Parker, Paul Eggers and Ken 'Fred' Cameron) 34 ends 74 points, while Picnic Point (Darren Bromley, Gary Melvoid, Phil Wall and Richard Wilkes) ran fourth on 34 ends 66 points. The Ray Bird Memorial for best Walcha quartet outside the Top 4 was taken out by Steve Goodwin, Ray's brother Ian Bird, Matty Hamel and Geoff Salt.

A total of 26 teams consisting of over 100 players lined up over the weekend – which certainly benefited the club financially. Co-founder of the Carnival Aiden Wall was special guest who presented some of the trophies.



Pictured are Glenn Brooker, Andrew McGuffog, Graham Marshall and Paul Ireland



CAROLS IN THE PARK



McHattan Park
Tuesday 9 December
BBQ 6pm | Carols 7:15pm

Free Sausage Sizzle & Drink
\$10 Steak Sandwiches
\$2 Glow Stick Candles
with a song book

BYO Chairs
Fun for all the family
Tune up the vocal chords
Sing along with the Choirs



LAWD.com.au

1,057.5ha*



DELANTES | NOWENDOC, NSW LIFESTYLE WITH COOPLACURRIPA RIVER FRONTAGE

Private Treaty
\$2,000,000

- Estimated carrying capacity of 100* cows & calves
- Securely watered by eight* dams, Delantes Creek, Patons Creek, Cooplacurripa River & two permanent spring-fed gullies
- Timber species include blue gum, silvertop stringybark, & grey gum
- Infrastructure includes a machinery shed/hay shed, cattle yards & transportable accommodation
- Located 82km* south of Walcha & 330km* north of Sydney

George Berry
0438 081 736

Michael Corcoran
0417 657 589

*Approx 

what's the goss



with AJ Cross

Gee, it was sad to hear our neighbour of two years Jenny Grub (nee Green) left this world last weekend after battling a relatively short illness diagnosed earlier this year. Sincere Condolences to her husband David along with family and friends. Jenny will be farewelled at a private ceremony next Monday. May Jennifer Ann Grub Rest in Peace.

...

For many years some locals have traveled to Port Macquarie to attend the annual 'Oystermans' event, where they have enjoyed an array of oysters, prawns, fish and beverages – but even the old stagers couldn't put a year on the first time it was held up at Limeburners Creek. Some reckon it was the late 1980's and other the 1990's but all will agree it has been happening for a while now.

...

For the first time since it became a celebration for Ex Walcharites, some of their friends, and the usual Walcha suspects at Port, the get-together was held in Walcha at co-organisers Gary Natty's residence last Friday. The 21 attendees enjoyed a great afternoon and let's just say if you went home hungry check out the nearest mirror if looking for someone to blame. A big thank you to Chefs Gerry Moran, Graeme Wall, GJNatty and Stork Brazel, along with lemon cutter-upperer Mark 'Turbo' Peters.

...

Former Walcha plumber and gasfitter Neil Dark was in attendance with a fairly flash looking white handled oyster knife which had a slightly raised tip on the end of it. When I asked Neil how good his knife was his reply was "It's a bloody ripper" but wait there is more.

...



45ft flat top • 45ft single deck cattle float • 26mtr B Double
19mtr mini B Double • Low Loader available for hire



BRIAN
Smith
**TIMBER
TRANSPORT**

Call us for
your large
Transport
needs

WALCHA
02 67772126

Bonnie Smith 0429 772 077
Brian Smith 0427 780 216

Neil then went on to explain his much better half Lyn had purchased it in South Australia while they were on one of their adventures, prompting our 'knight in shining armour' to inform her the knife wouldn't be much good. When I asked 'Darky' if he had apologised to his wife he told me he hadn't and would appreciate it if I didn't mention anything about it to Lyn. Your wish is my command Neil.

...

During recent times local Veteran sporting legend Max Holstien and his good friend Janice Rizzi traveled to Uralla for an appointment which turned more into a sight seeing trip. The reason being the 'Dynamic Duo' headed north on the Monday when it was meant to be the Tuesday.

...

Former Walcha resident Andrew Dunn has been selected in the Australian Bench Rest Rifle Shooting team to compete in the World Championships in Portugal next year after good performances at selection trials in Toowoomba recently. Way to go Andrew.

...

Congratulations to the Walcha players who performed well at the three Uralla Opens last weekend. The hard luck story in the Mens 4BBB Open on Sunday had to go to 'Kobada King' Andrew Crawford and his son Ollie who carded the same score as the winners Will Archdale and Matt Jackson (+9). Sadly there was a scoring malfunction by the elder of the two players when a wrong number was put on the card which lead to team Crawford being disqualified. Little chance Ollie would have said much to his 'Old Man'.

...

What a performance by local junior cricketer Will Hall when he spearheaded his TAS team to victory over ladder leaders Hillgrove at Lambert Park in the Armidale 1st Grade competition last Saturday. TAS had set their opponents a total of 129 runs before left arm quick Will tore the heart out of the Hillgrove batting lineup snaring seven wickets at a cost of 22 runs off his 7.5 overs when he opened the bowling. Not a bad days work Will.

...

Another eye catching bowling performance by another young local and Farrer 1st X1 member handed in by right arm 13 year old quick Leo Blomfield, when he claimed five wickets for just 14 runs off his nine overs, which included three maidens when he played for Northern Inland Cricket Council U/14's against Mid North Coast at Tamworth last weekend. M.N.C won the game but not before facing the music from Leo.

...

Still on cricket congratulations to Walcha/Uralla 2nd Grade batsman Shannon Rafferty on scoring an unbeaten 105 runs against Armidale United here at Peter Fenwicke Oval last Saturday. Opener Josh Wearne was unlucky not to register his ton when he had his furniture re-arranged on 92 runs. Good on ya boys.

...

The Walcha/Uralla 2nd Grade players Shannon Rafferty and Ed Blomfield will be representing Mid North Coast at the Over 40's NSW Veterans Cricket Championships in Wollongong next week. Unfortunately New England and Central North were unable to field teams so our boys have looked further a field for an opportunity. Go Gettum 'Raff' and 'Bloomy'.

...

Walcha's Petuha sisters Veja-Lee and Xaphyn were rewarded for their efforts throughout 2025 when PLC held their Sports Dinner at the Armidale Bowling Club last week. Veja-Lee was named Year 7 Rookie of the Year, Junior Athletics and Junior Cross Country Champion, while Year 8 student Xaphyn was awarded Best and Fairest Player in Junior Netball. Go Girls!!



Cricket

Last Saturday Walcha/Uralla 2nd Grade team defeated Armidale United by 226 runs in their Armidale and District Cricket match here at Peter Fenwicke Oval whereas 3rd Grade were belted by TAS 2nds at Wakefield in Armidale.

At home the hosts compiled 6/268 off their 40 overs spearheaded by Shannon Rafferty with an unbeaten 105 runs and opener Josh Wearne 92 runs which included a 142 run third wicket partnership.

All rounder Peter Mooney was unconquered on 19 runs while Daniel Boyd contributed 16 runs.

In reply A.U.C.C. were never in the hunt with left arm trundler Peter Mooney taking 4 wickets for just 2 runs, Jay Grills collected 3 wickets at a cost of 11 runs whereas openers Cameron Mooney and Matthew Harper also picked up a wicket each.

Up in Armidale the visitors lasted around 32 overs where they scored 101 runs mainly from captain Nathan Laurie 25 and Brett Dwyer 23 while David Morley 14 and Bob Jex 9 not out also chipped in.

In reply TAS were in a bigger hurry than Travis Head in the first Ashes Test passing their assignment in 16 overs whole losing just one wicket.

This Saturday 3rd Grade are down to play both Hillgrove and A.U.C.C in a T20 Double Header at Newling Oval whereas 2nd Grade take on City/UNE in their 1st Grade T20 at Lambert Park.

Walcha/Uralla v AUCC 2nd Grade

Walcha/Uralla

E BLOMFIELD b M Bhandari.....	1
J WEARNE b M Bhandari.....	92
D BOYD b M Bhandari.....	16
S RAFFERTY n.o.....	105
W ARCHDALE lbw M Bhandari.....	0
J GRILLS b M Bhandari.....	7
C MOONEY b S Bhat.....	3
P MOONEY n.o.....	19
Total 268 (40 overs) Extras 25	

Bowling (overs/maidens/runs/wkt): E Blatch 7-0-46-0, M Bhandari 8-0-27-5, A Chand 8-1-39-0, A Pantha 5-0-37-0, S Bhat 8-0-64-1, H Kumar Mishra 4-0-40-0.

AUCC

T RAWAL c S Rafferty b C Mooney.....	3
A SHARMA c E Blomfield b P Mooney.....	10
A PANTHA c B Hoy b M Harper.....	2
H MISHRA c D Boyd b P Mooney.....	21
A CHAND b P Mooney.....	0
M BHANDARI n.o.....	3
E BLATCH c C Mooney b P Mooney.....	0
K RAI c W Archdale b J Grills.....	0
S BHAT lbw J Grills.....	0
MD SARKER c C Mooney b J Grills.....	0
Total 42 (14.5 overs) Extras 3	

Bowling (overs/maidens/runs/wkt): M Harper 5-1-10-1, C Mooney 5-0-19-1, J Grills 2.5-0-11-3, P Mooney 2-0-2-4.

Walcha/Uralla v TAS 3rd Grade

TAS

J BACH n.o.....	50
H BROWNIE lbw B Ussher.....	14
J ROGERS n.o.....	30
Total 102 (16 overs) Extras 7	

Bowling (overs/maidens/runs/wkt): B Ussher 8-0-55-1, N Laurie 4-0-18-0, D Morley 4-0-27-0.

Walcha/Uralla

B MULLEN b M Mayo.....	7
N SWAN b M Mayo.....	0

PRIVATE PLAYER b B Williams.....	4
B MOORE c? b B Williams.....	1
D MORLEY c? b M Mayo.....	14
N LAURIE c? b M Clout.....	25
B DWYER c B Williams b M Clout.....	23
B JEX n.o.....	9
B USSHER b H Brownlie.....	7
G BROWN b.....	3
Total 101 (32.2 overs) Extras 8	

Bowling (overs/maidens/runs/wkt): M Mayo 5-0-13-3, B Williams 4-1-7-2, J Bach 3-0-22-0, C Wellings 5.2-1-10-1, H Brownlie 2-1-6-1, G Douglas-Menzies 5-1-24-9, J Rogers 3-1-6-0, J Palfreyman 3-0-1-0, M Clout 3-1-1-2.

Walcha/Uralla 2025/26 Cricket Sponsors

MAJOR SPONSORS

- Karori • New England Vets Cricket
- Winterbourne Wind • SuperAir
- First Contact Security

SPONSORS

- JM Grills Tiling • Walcha Carrying Co
- Walcha Tyre Service • Commercial Hotel
- Transwest Fuels • Thunderbolt Gas
- Davidson Cameron & Co.

ADVERTISEMENT

Bowls

Congratulations to all concerned with the Pasture Wonderland Carnival it was a great success.

A composite side of Glen Brooker, Graham Marshall, Andrew McGuffog and S Ireland were this year's winners. Glen has competed for many years in this carnival, congratulations to him and his team, a great result.

Pasture raffle results 1st prize-Amanda Jane, 2nd prize Margie Ratcliffe, 3rd Ken McLeod.

Results: Graham Marshall and John Byrne have played their way into the pairs final defeating Fred Cameron and Ian Bird 18 to 12. Well done fellas.

Thursday: Noel Goodwin, Barry Hoad and Tony Batterham defeated John McCormack, Barry Kliendienst and Darrel Brazel, 8/7.

Pennants start on 14 February 2026. All interested should place their names on board.

Draw for this Saturday: Pairs Noel and Brian Goodwin v Mat Hamel and Mick Steep.

Ladies Bowls

The ladies continued to improve their bowling skills with more activities last Thursday. Pam Makeham, Debbie Richards and Lyn Burnell had a win playing two jack bowls against Marg Morris, Lee McCoy and Marie Spink. While Wendy Moore and Margaret Tickle played a singles game. We have been invited by our Bowling Club president Adam, to play in the President's Day on Saturday 10 January. You need to gather a team of four and have your nominations in by 21 December. Hopefully we can field a couple of teams. See notice on board.

Don't forget to nominate for our Christmas party on 11 December at the Bowling Club when the men will be joining us for a game of bowls. Please write your name on the nomination sheet by tomorrow.

Bowls commencing 9.00am for 9.30am start tomorrow with maybe more interesting activities!

Wednesday Golf

Firstly, I would like to apologise to Vicki Heffernan for not reporting that she was the runner-up last week with +1.

On Wednesday we played stableford for Sue Partridge's trophy. The winner was Pip Monie with 36 points, on a countback from Bec Hall.

Sue also gave prizes for the best front and back nines.

Bec Hall was the winner on the front nine with 22 points and Cheryl McDonald took out the back nine with 20 points.

Sweepstakes were won by Ruth Fletcher with 34 pts, Sal McCormack with 33 pts and the final sweepstakes went to Sue Partridge with 32 pts.

Pauline Carter was nearest the pin on Hole 3 and Cheryl McDonald on 18.

Today we are playing stableford for Ruth Fletcher's trophy.

At the Nineteenth

With a number of locals competing at the Uralla Open last Sunday a modest field of teed off here at home for a trophy donated by Dion Bird where Club Champion Lee Fletcher racked up 37 stableford points to collect the prize.

Sweepstakes went to Margaret Davidson, Ross King and Andrew Robertson all on 34 points after counting out Anne Martin also on 34 points.

Sharpest shooter at the 3rd pin was 'Waterloo Mayor' Ross King.

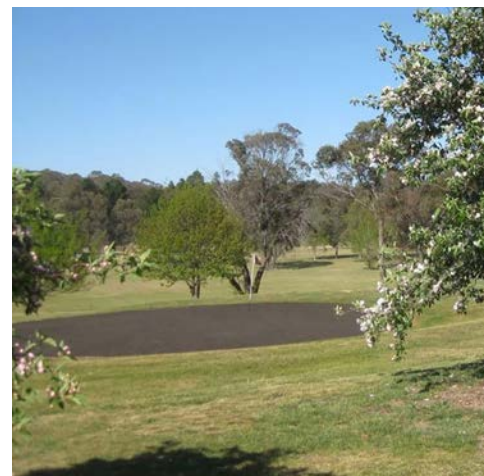
With a bit going on last Saturday the weekly 9 hole competition was called off.

Walcha players were successful at the Uralla weekend of golf including Will Archdale who teamed up with Matt Jackson from Armidale to win the Mens Open 4BBB with a score of +9 on Sunday.

Cheryl and Doug McDonald finished fifth in the Mixed Open on -8 whereas Doug accumulated the equal best score 40 points in the Veterans Mens Open the same as Bill Fletcher on Friday.

In the Veterans Ladies Open Jenny Lisle produced the best score 37 points while Cheryl McDonald 34, Sue Partridge 32 and Pauline Carter 29, all finished in the Top 10.

This Saturday is the Anne Berry Memorial 9.30am for 10.00am tee off, then on Sunday the postponed Mixed Foursomes Championships are scheduled to be played in conjunction with a 4BBB Medley for prizes provided by Brendon Blake at New England Taxation Services. Please note 10.30am tee off to be followed by presentation night later in the day.





telecottage
WALCHA

Design, print and secretarial services

- Photocopying
- Laminating
- Business cards
- Stationery
- Invoice books
- Labels
- Catalogues and flyers
- Invitations
- Cards
- Stamps and more ...

39w Fitzroy Street, Walcha
Phone 6777 1111
wtc@walchateleccottage.com.au

Death Notice

Bridget Nivison (nee Pennefather)

12/5/1934 – 30/11/2025

of "Mirani", Walcha

Much loved wife of Peter (dec'd), loving mother of Hugh, Fiona, Tim, Dougal & Robert (dec'd)

Dear "B" to Hugo, Grace, Jock, Zoe, Tom, Jack, Ali, Edward, Heather & Cara.

A private cremation will be followed by a celebration in the new year – details TBC.

Public Notices

DR GENEVIEVE FREER

Phone 6777 2068 | 0429 668 583

Carols Tia Church Sunday 14 December, 4pm. Bring chair, nibbles and drink for gathering afterwards.

Barber Shop closed this Thursday and Friday afternoon. Open normal hours next week before closing for Christmas break.

Walcha Home Furnishing

Now Open

Buying and Selling

Quality furniture

PH: Dave 0427 771 469

Positions Vacant

Expressions of interest

Are invited for the provision of Grounds & Maintenance services at St Patrick's Primary School.

An information pack is available from the Administration Office by contacting 6777 2328 or via email spwadmin@arm.catholic.edu.au

Interested companies can arrange a suitable site visit by contacting school office, details above.

Tenders close at 3:00pm, Monday 15th December 2025 and should be addressed to:

Dallas Hyatt
Principal
St Patrick's Primary School
PO Box 165
Walcha NSW 2354



Positions Vacant *cont.*

School Canteen Assistant and Admin - Part Time -

Walcha Central School P&C canteen seeks a friendly Canteen Assistant (2 days/week) plus Canteen Admin support (1/2 day/week).

Tasks include food prep, serving, cleaning, stock checks and basic admin. No experience needed - just reliability and a positive attitude.

To apply or for more information please email walhacentralpandc@gmail.com.

For Sale

We have plenty of plants available for a special deal of just \$1 each at the Mens Shed. Open from Mon, Wed and Friday from 9am to 3pm. See you then.

Meeting Notices

Woolbrook Stampede AGM Wednesday 3 December 6.00 pm at Woolbrook Sports Ground. All welcome.

Walcha Garden Club Christmas Party Friday, 5th December at Jim & Jules Young's garden, 'Sallywood', 1934 St Leonard's Creek Road, Walcha. Cars depart McHattan Park at 9.30am. BYO chair, cup and plate of food to share. Bring a gift or plant to exchange. Members are encouraged to invite guests. Enquiries: S Law 0467 450 243, D Lisle 0429 799 083.

Thank You

Our family would like to thank each and everyone of you that have sent flowers, plants, cards, texted, called and attended the funeral of our beautiful girl Jenelle Smith (nee Walker). Jenelle touched so many lives. Thank you for your support.

John, Brenda, David & family. Darren Smith & family.

On behalf of myself and husband John we would like to extend our thanks to the Dr's, Nursing Staff, Paramedics and the local Community for their support and care to us both after our recent accident. Your get well wishes, help, phone calls and concern meant so much to us during this difficult time. A Special thank you to the Community Care Transport Bus team for making sure I got home safely, your assistance was truly appreciated. Thank you to this wonderful Community for your care and support. Bec & John Sanders.

THE APSLEY
Advocate

Christmas Box Ads

LAST TWO EDITIONS FOR 2025
10 & 17 December

**BUSINESSES
BOOK YOUR
ADVERTISING NOW**

First Advocate for 2026
Wednesday 14 January





LUX ELECTRICAL

LEE HARRISON

0448 840 461

lee-harrison-electrical@gmail.com

LICENCE NO. 480735C

CCTV | SECURITY SYSTEMS | RE-WIRES | LIGHTING & POWER | SAFETY
SWITCH UPGRADES | RENOVATIONS | INSTALLATIONS & MAINTENANCE
FULLY LICENCED & INSURED

Nick Moore PLUMBING & EXCAVATION SERVICES

WALCHA & SURROUNDING AREAS



Highly qualified and experienced plumber
All aspects of Plumbing and Gas Fitting
Wood heater installation
Roofing and Guttering
Gold License No 59555C

Nick 0418 691 306

nickmoore203@yahoo.com.au

Katy 0422 034 660

SELF STORAGE

NORTH STREET – WALCHA

Various sized sheds
Security fenced

0439 584 344
or 0428 653 307



PETER NORBURY MOTORS MECHANICAL

117E Fitzroy Street

General Maintenance • Servicing • Pink Slips • Wheel Alignments & More

Monday – Friday

6777 2944

Andrew McGuffog

CONTRACT FENCING

NO JOB TOO BIG OR SMALL

- All types of rural fencing
- Caterpillar Skidsteer hire with a range of implements

Andrew..... 0428 360 985

James..... 0412 800 451

STACES FAST FREIGHT

Delivering
Tamworth – Walcha
0429 608 409



ENGINEERING

John Wall

• Stock floats • Feeders • Sheep & cattle yards • Steel framed sheds & mobile welding

6778 0588 • 0428 778 087

A G W RURAL CONTRACTING

GPS Equipped boom spraying
Andrew Wauch 0427 549 748

AQF3 ARBORIST

Tree lopping & removal
Truck
Bobcat
Post hole digger
Trencher
Woolshed Cleaning



treetopservices@bigpond.com



Andrew: 0427 549 748

Toni: 0421 972 354



PATRICK STACE – WALCHA
Mob. 0428 780 077 Ph. 6778 0595

SPLITZAIR WALCHA

AIR CONDITIONING AND ELECTRICAL

- Domestic and Commercial
- Split system specialists
- Quality installations



Dave Stevens 0438 007 275

Lic.182154c
Lic. AU42686

CHIROPRACTOR

Samantha Goor

B.Sc. Anatomy (NSW) M Chiroprac (Macq)

Tuesday & Friday from 9.00am

6777 1340

DISCLAIMER LETTERS TO THE EDITOR are submitted on the condition that The Walcha Telecottage as the publisher of The Apsley Advocate may edit and has the right to, and license third parties to reproduce in electronic form and communicate these letters. They are published at the discretion of the Editor and Board. The Apsley Advocate is printed by The Walcha Telecottage, PO Box 116 Walcha NSW 2354. Phone 6777 1111 Fax 6777 1112. The Walcha Technology Co Operative Limited, the Editor and Staff of this Newspaper have published any article here-in in good faith and bear no responsibility in respect to the accuracy of the information contained in such article. Any person or persons publishing material in this Newspaper do so in the knowledge that they shall personally accept any responsibility for the accuracy and other correctness of such articles and also accept full responsibility for the legal consequences if it be found that the article contains any inaccuracies in the contents of any such articles.

DEADLINE MONDAY 4.30PM Editor: Anthea Macpherson, Susie Crawford. Advertising/Sport: Megan Scrivener, Joscisca Matapakia and Kate Connors.

church notices



ANGLICAN

December 7

9.30am Walcha Service

2.00pm Niangala Service

Anglican church

Phone 6777 2543 or

email:

walchaanglican@gmail.com

PRESBYTERIAN

Walcha - Every

Sunday 9:30am

Youth Group every

Saturday 5pm –

7pm, during term

time.

All welcome. Phone

6777 2539.

CATHOLIC

Sunday Mass

10.00am

Marchant

BROS. PTY. LTD. Est. 2000



BULK WATER DELIVERY AVAILABLE

A FULL RANGE OF AFFORDABLE TRANSPORT & EARTHMOVING

Dam construction/maintenance, stick raking, gravel available, road building, site prep, pipe laying and all timber work. Check out our website for the full range of machinery, attachments and services available.

FIREWOOD AVAILABLE DELIVERING NOW

Earthmoving and Heavy Haulage Transport
Jason 0427 490 487 • Jamie 0429 771 351
 02 6777 2024 marchantbros@bigpond.com
 www.marchantbros.com.au



OK EARTHMOVING

SPECIALISING IN ROAD CONSTRUCTION & MAINTENANCE

- Bulldozers
- Excavator 2t - 30t
- Truck and Dogs
- Gravel supply
- Graders
- Rollers
- Skid steers + multiple attachments
- Forestry mulching
- Land development
- Large Dam construction

Peter O'Keefe : 0429 944 821
 Will O'Keefe : 0488 925 845



Proudly servicing Walcha and surrounding districts for over 30 years

WALCHA

BOWLING & RECREATION CLUB

WHAT'S ON?

Thursday 4 12.00pm - Close

BOWLS 9.00am Ladies, 1pm Social

Friday 5 2.00pm - Close

2.00PM BINGO 6.00PM BISTRO

6pm Raffle tickets meat & vege trays

7.30PM FREE BINGO

8.00PM Raffles and Members draw

BISTRO

- Grilled Salmon
- Chicken taco
- Homemade rissoles

Home deliveries - town limits only

CATERING NEEDS

Dianna - 0412 536 760 or 5722 6003

Saturday 6 11.00am - Close

5.00PM BISTRO

NO DELIVERY SATURDAY NIGHT

Sunday 7 11.00am - Close

12.00PM BISTRO

Raffle tickets from 12pm,
drawn 1.00pm.

MEMBERS DRAW

\$550

YOU MUST BE A MEMBER
FOR 2024/2025 TO BE
ELIGIBLE TO WIN

Upcoming Live Music
7:30-10:30pm

Saturday 13th December
 Christmas Show Matt Barratt

Please note!

The Club will be closed on
Saturday night from 6pm for a
private function.
Sorry for the inconvenience
caused.

Sunday Happy Hour

\$5 SCHOONERS
 3pm - 6pm

Do you live in Walcha Shire? If so you MUST be a member to enter the Club
 Social Membership \$15. Full Membership \$120. PHONE 6777 2077



Christmas Opening Hours

Open | 24 Dec (until 2pm)
 Closed | 25 Dec - 4 Jan
 Open | Monday 5 Jan 2026

We would like to thank
our valued customers
and the community for
their support and wish
you all a Merry Christmas.

From the team at
Linmac Co.

Suppliers of products from

- Safestyle Eyewear • Yowy • Kincrome
- Macnaught • Bosch Batteries • Farm Her Hands

■ METAL FABRICATION
 ■ SMALL ENGINE REPAIRS
 ■ FUEL

AGENTS FOR



BOC

Husqvarna

KINCROME

Transport
NSW TrainLink

QBE

Phone 02 6777 2822 • admin@linmacco.com.au