

THE APSLEY Advocate

CIRCULATION 1920 – P 02 6777 1111 F 02 6777 1112 wtc@walchatelecottage.com.au walchatelecottage.com.au

28 January 2026

OAM for Walcha sculptor

The Order of Australia Medal is one of the highest honours in the Australian Honours System which recognises those who have made a positive difference in their community.

It is extremely fitting that Stephen King was honoured with this award on Australia Day for his service to the visual arts as a Sculptor.

Stephen founded Walcha's Open Air Gallery in 1996 and he has dedicated many hours to managing and curating this Gallery. It was appropriate that the Australia Day ceremony was held in McHattan Park on Monday with residents sitting around Stephen's first sculpture for the Open Air Gallery, *Weather Signs*. "By 2001 we had 25 sculptures in the Open Air Gallery and it has now grown to 65 with four new ones coming," Stephen said. The Open Air Gallery gives Walcha a unique feel with Stephen's sculptures featuring on the eastern entrance to town, around the streets as verandah posts, as well as numerous pieces along the levee banks.

Sculpture by the Sea assisted with the growth of the Open Air Gallery. "I hosted many of the overseas sculptors here in Walcha who were in Australia working on their pieces for Sculpture by the Sea. When the exhibition concluded, more often than not the sculptors have given their pieces to the Open Air Gallery, so the collection has built up over the years, and cost the community very little," Stephen explained.

Stephen is now working on the New England Sculpture Track from Bendemeer to Walcha. "This is a way to get travellers off the highway and spending money in our towns. I am hoping to have sculptures in Bendemeer, Woolbrook and Walcha Road. There are similar ideas in towns in southern NSW and it has helped bring people into these towns and revived many small communities. There is nothing like this in the northern NSW," Stephen said.

Stephen is looking forward to exhibiting in Sculpture by the Sea again this year. This will be the 24th year he has been selected for the exhibition. "This is fabulous for art in Australia with around 500,000



people visiting over the three week period."

Other awards Stephen has received include:

- Transfield Australian Invited Artists Program, Sculpture by the Sea, Bondi, 2023
- Winner, Artists' Prize, Palmer Sculpture Biennial, 2022
- Winner, Sculpture in the Vineyards, Wollombi Valley Sculpture Festival, 2020
- Winner, Sculpture in the Garden, Mudgee, 2020

He was also selected as the Australian representative to the Inmai Wood Carving Symposium in Japan in 2007.

Stephen enjoyed receiving many phone calls from friends and fellow artists on Monday. "It's strange to receive an award for something you love doing," he commented.

LEVERAGING NATURAL CAPITAL ON YOUR FARM AVOIDING RISKS, MAXIMISING REWARDS.

4 WORKSHOPS

Join SNEL at one of 4 workshops with **Rachel Lawrence, Natural Capital Adviser, NTLLS**. Build your understanding of how to maximise opportunities via interactive discussions hosted by local, trusted organisations in our community.

- Key terms and drivers
- Markets vs financial recognition
- Links to sustainability and regeneration
- View your farm through an agro-ecological lens
- How to follow up on opportunities

Cost: \$25 pp | Time: 5.30 - 9.00 pm.

Uralla - 18 February 2026

Walcha - 19 February 2026

Armidale - 25 February 2026

Guyra - 26 February 2026

Call 02 6772 9123 or
visit www.snelandcare.org.au
for more info



LINTON

Poll Dorsets
\$uperBorder\$

Sale

Monday 9th Feb
1pm

Walcha Showground

George Carter
0447 272 371

JOIN US
FOR AN
UPDATE

10 February
9am start
at WVS
Please **RSVP**
by Friday
6 February



WEANER MANAGEMENT TUESDAY 10 FEBRUARY

Come along and learn how to get the most out of your weaners with Dr Michael Duggan and Zoetis.

Learn how to protect against BRD and parasites through an on-farm product demonstration.



Call 6777 2588 • 6 Aberbaldie Road Walcha • www.wvs.com.au



CIVIL CONSTRUCTION EXPERTS

OUR PLANT:

- ✓ D6T Dozer - 18ft Stickrake + GPS + Lazer grade
- ✓ 5t, 13t, 20t, 36t Excavator GPS, grabs, screen
- ✓ 2t - 12t tipper & dog, 40t moxi, water cart
- ✓ Positrack, tractor, augur, post driver

OUR SERVICES:

- ✓ Wet and dry hire options
- ✓ Driveways, dams, pads, quarry
- ✓ Sheds, bridges + farm infrastructure
- ✓ Design & Engineering services

CONTACT GLEN
0403 726 780
 OXLEYCIVIL.COM.AU
 VISIT FOR A FULL RANGE OF EQUIPMENT & SERVICES

COMPETITIVE RATES

around the traps



By SIMON NEWTON

The Australia Day long weekend turned the temperature gauge up with a heat wave that will stick around for the entire week. Spare a thought for those Victorians still battling drought conditions, bushfires and now extreme temperatures. Ceduna in South Australia broke a daytime temperature record hitting 49.5 degrees on the weekend, now that's hot! Walcha hit 36 degrees, but the night times are still pleasant, lets hope this heat brews up some moisture for everyone. February is always hot for us and always touch and go as to whether to plant your annuals or not. It's a gamble either way, but if luck is on your side it will pay dividends for an early crop. Someone mentioned that they have seen nature signs showing it will rain in the next few weeks, the ants are building, lets hope this is right.

Lumpy Skin disease has been officially reported in Bali and is edging closer to our northern coastline, just 1200km away which now means less buffer for Australia to the disease. Australia hasn't had Lumpy Skin disease before, but the risk is growing considering its ability to be spread by humans. Australia needs to increase its biosecurity measures with increased surveillance, diagnostics and border security. The unknown for Australia is the non-regulated pathways the disease can travel via such as wind-borne insects.

The Chinese government decision to restrict beef imports will change the flow of beef throughout the world. Australia will need to find a new home for 100,000t of Australian beef and Brazil will have 600,000t beef looking for a new home. Brazil is our biggest competition considering it is now recognised as free from foot and mouth disease, which means they will attempt to gain access to new markets that will compete directly with ours. The Chinese market is a very important non-HGP grain fed market for Australia considering it takes 50 per cent of our total grain fed beef exports. These restrictions will in-turn push Australian feedlots and processors to move away from China specific feeding programs. The change in feeding regimes will put price pressure on those suitable cattle, but by the sounds of it the EU accredited producers might have another string in their bow to combat these losses due to European market access if China is restricted. Australia needs to get a self-imposed quota management system in place to ensure we send only the highest value beef into the Chinese market. The major competition will be the lean manufacturing beef from Brazil into non-Chinese markets; this competition will put some pressure on our manufacturing beef, especially cows. What will help us is the hunger for manufacturing beef into the USA and the lack of suitable kill numbers, especially in the south.


The sheep and lamb markets have kicked off in strong fashion for 2026 on the back of its second highest slaughter levels ever recorded for mutton. Suggestions are that the flock will begin to rebuild this year, but I personally don't see it, especially throughout the tablelands. The mutton indicator is 350c/kg higher than the same time last year, meaning the lack of slaughter animals have prices humming and it doesn't look to be slowing anytime soon. Lamb prices have also started the year strong, sitting 280c/kg higher than the same time last year with reports that the lack of lamb numbers will push prices higher this year than last. Another bonus for sheep producers is the lift in wool prices with the eastern market indicators for wool sitting at nearly 1700c/kg clean, which is a whopping forty-two per cent higher than the same time last year. If you're in the ultra-fine merino wool than that market is solid, twelve microns making more than 12000c/kg clean.

The heat has pushed some big numbers onto the market in the last week with no market held in Tamworth on Monday due to the Australia Day public holiday. Prices have softened over the last week, best of the cows made to 400c/kg, feeder steers nudged 500c/kg, while feeder heifers softened to make 450c/kg. Prices still look great, especially if your livestock have weight and condition.



Make it a clover year!

DRIVING PERFORMANCE ACROSS THE BOARD
WOOL, MEAT, REPRO, HEALTH & WELFARE



6TH ANNUAL ON-PROPERTY RAM SALE
40 POLL MERINO RAMS
1pm THURSDAY 5th FEB 2026
INSPECTIONS FROM 10.30am

Todd Whillock 0427 740 283
 clovernook13@gmail.com
 1049 Campfire Rd, WALCHA NSW

AuctionsPlus

RWS RESPONSIBLE WOOL STANDARD CERTIFIED

Elders

Tom Henry 0409 659 877
John Newsome 0428 669 498
James Sharpe 0409 272 490

National John's Program MN2

MERINOSELECT ASBV

Bucket list achievement for Danny at Summernats

Danny Hoy recently travelled to Canberra for the Summernats 38 Car Show after being personally invited by Owen Webb to unveil his 1956 Holden FE Station Wagon he has been restoring over the past few years.

Only 23 cars were unveiled with Danny's 1956 Holden FE Station Wagon being placed in the Top 60 cars for Australia from over 4000 entrants that attended the show.

The Holden is also one of five cars to be invited to attend the Red Centre Nats in Alice Springs in September 2026.

The car was previously owned by Barbara and the late Stewart Dunn.

Danny purchased the car four years ago. It had been sitting in the Dunn's shed since an accident in 1969.

The 1956 Holden FE Station Wagon is affectionately known as 'Barbara' with her classy two-tone paint work in Champagne and Honeycomb.

The restoration is by no means standard, under the bonnet you will find an LS1 motor tickled with a camshaft to around 342 hp supported with a Statesman transmission and independent suspension front and rear.

Locals Juan Carey, Gary Dunn, Aiden Goodwin and Brad Keable all worked on bringing the restoration to life, along with Robin Frank, Guyra Smash Repairs and Armidale Upholstery.

Juan and Gary travelled to Summernats with Danny to witness the unveiling. Family and friends also travelled to Canberra to witness Danny's bucket list achievement.



Stock and Property Watch

www.nutrienharcourts.com.au

Established Horse Stud on edge of Walcha



NEW PRICE
\$2,700,000

'Tamac' 543 Aberbaldie Road, Walcha

- 61 hectares.
- 4-year-old main homestead.
- 3 spacious bedrooms.
- Renovated cottage consists of 4 bedrooms, 2 bathrooms and new kitchen.
- Horse Stud fenced into 23 paddocks with water troughs and shade shelters.
- Sown with improved pasture.
- All paddocks are connected with a laneway system.
- Watered by a reliable bore, reservoir and dams.
- 21 horse stable block, covered round yard, covered wash bay and 6 horse walker.
- "Tamac" also comes with a well-established substantial income.

Miles Archdale M 0428 660 326 E miles.archdale@boultonswalcha.com.au



Nutrien Boulton's Walcha ■ 3n Derby Street Walcha ■ 6777 2044

Walcha Australia Day Awards

On Monday 26 January, locals were acknowledged for their dedication and talent at Walcha's 2026 Australia Day ceremony in McHattan Park.



Pictured above: Walcha Mayor Eric Noakes, Norm Bazeley, Mitch Scrivener, Australia Day Ambassador Jane Rutter, Jenny Hoy, Logan Stace and Kix Brown.

Left: A great crowd gathered in McHattan Park for our Australia Day ceremony



Citizen of the Year: Jenny Hoy

Described as kind, hardworking and someone who makes the community a better place to live in, Jenny Hoy was a fitting recipient of Walcha's Citizen of the Year on Australia Day.

Jenny is involved in numerous community groups and is the organiser of Walcha's Biggest Morning Tea where she has helped raise over \$100,000 for cancer research.

Jenny is Treasurer of the Garden Club, a Life Member of the Basketball Association, is involved in the administration of the Tennis Club, helps on the canteen at the Rugby Club, as well as Camp Cook for the local Pony Club. If this isn't enough, Jenny assists many elderly with their gardens and visits to check on many around the community. "Jenny is an amazing person who shows understanding and sincerity to all," her nominee commented. We thank Jenny for the work she has done to help so many.

Young Citizen of the Year: Logan Stace

The proprietor of Walcha's newest business, *Coffee-to-Go*, Logan was recognised for his community mindedness.

Described as a friendly, respectful and customer- focused young man, in 2025 Logan set up a pop-up coffee stand and mobile cafe providing services at community events,



WALCHA LAW

- PROPERTY • ESTATES • WILLS
- POWER OF ATTORNEY & ENDURING GUARDIAN DRAFTING
- FAMILY LAW & MEDIATION

Sophie Thomson

Director/Solicitor

James Levingston

Consultant/Solicitor

6777 2066

info@walchalaw.com.au

– Local lawyers for over 76 years –
Incorporating Patterson Byfield and Bryen



MARYLAND

White Suffolks

RAM SALE

ON PROPERTY

WED 11 FEBRUARY 2026

40 WHITE SUFFOLK RAMS 25 2TOOTH RAMS 15 RAM LAMBS

Inspection from 10am
Sale commences at 1pm
115 Bergen Rd Wollun

Angus Burnell 0427 787 332

James Sharpe 0409 272 490



offering a service during periods of limited local cafe availability. Prior to this Logan worked as a barista at Walcha Coffee.

At Junior Indoor Hockey he referees and also mentors younger players. At Walcha Central School he is involved in leadership roles, is Vice Captain of his sporting house, and a member of the school band. As a member of the school's Agriculture Team he represented WCS in various competitions around the region. He is an active participant in rugby league, indoor hockey and competitive swimming.

"Hardworking and reliable, Logan demonstrates initiative and perseverance in balancing school, sport and business responsibilities".

Junior Sportsperson: Kix Brown

Kix has delivered an exceptional year of sporting achievement, displaying remarkable skill, dedication and sportsmanship across a wide range of disciplines.

On the basketball court he represented the region with distinction at North West (NW) trials, in the pool continues to shine, and in Cross Country was a member of the winning Armidale 11 years boys team that placed first at the NW Carnival. He has been selected on numerous teams, including PSSA Touch Football, NW Rugby League, PSSA Rugby Union.

In athletics Kix earned a NSW PSAA bronze medal which saw him compete and place 11th at Nationals.

His leadership and ability consistently lifts his school team across numerous sports.

Senior Sportsperson: Mitch Scrivener

Mitch is an all-round axemen, competing across all woodchop disciplines – the underhand, standing block, tree felling and stock saw, along with single and double-handed sawing. He has won numerous ribbons including many at Royal Shows across the country.

Mitch won the silver medal at the 2022 Stihl Timbersports™ Australian Rookie Under 25 final and ranked 11th on the Stihl World Rookie standings. He has represented NSW in New Zealand for the past three years, and his sporting career highlight to date is making the World Title Tree Felling final in 2024 and 2025.

Community Group, Organisation or Event: Walcha 2025 Lexus Melbourne Cup Tour Committee

Since 2003 the Victorian Racing Club has provided the opportunity for communities to unite and celebrate the 'race that stops the nation' and a local committee was formed to attain a Tour visit to Walcha. The partnerships formed to secure the visit included Council, local schools, horse fraternity, businesses and community.

The committee, led by Norm Bazeley, organised an extremely successful and well received Walcha tour. This included a procession, speeches, viewing of the Melbourne Cup, school visits, a luncheon, dinner and auction. The 2025 Lexus Melbourne Cup Tour in Walcha raised a total of \$7000 which was distributed to local organisations.



Congratulations to Jenny Hoy and Logan Stace on receiving the honour of Citizen and Young Citizen of the Year.



REAL ESTATE & LIVESTOCK

pitt.son.walcha@bigpond.com

www.pittsons.com.au

Pitt Son's

OFFICE 6777 2000

Sam Payne 0428 667 404

Ron Vincent 0427 775 821

Subdivision Potential

2 Hectares ~ 5 Acres



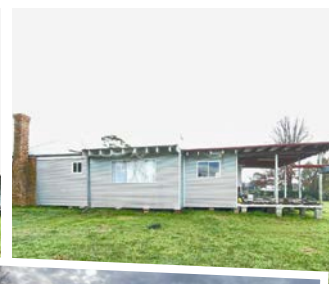
Lovely clean block on edge of town

\$180,000 ONO



Large flat block on the edge of town!

- Picturesque flat block
- Two bedroom cottage
- Re-modelled kitchen



- 5000 gallon rainwater tank
- Four-bay shed with roller doors with a durable concrete floor

\$350,000

Locally owned and operated



70 Superfine Merino Rams available for Private Sale

THURS 12 & FRI 13 FEB 2026

'Karori' 754 Table Top Road, Walcha
By appointment – Ed 0409 608 697

- Uniquely Soft & Stylish
- No Mulesing
- High Tops Low Culls
- Top Worm Resistance
- High Profitability
- Excellent Value

ED & KAREN BLOMFIELD 0409 608 697
Email: ed.karen@karori.com.au
www.karori.com.au

2026 NERSTANE MERINO EWE SALE

Friday 30 January 12:30pm via AuctionsPlus
ACC: Nerstane Merino Stud

Stud Merino Ewes

25 x Special Stud ewes
35 x Special Stud Poll ewes
36 x Stud ewes
60 x 2020 drop stud ewes
43 x 2019 drop stud ewes

Commercial Merino Ewes

312 x 2024 drop ewe hoggets
200 x 2024 drop ewe hoggets
213 x 2023 drop ewes
96 x 2022/23 Drop ewes
324 x 2020 drop ewes

ACC: MM Lisle

378 NSM Ewes 4.5 year-old 2021 drop Merinos
352 NSW Ewes 5.5 year-old 2020 drop Merinos

2026 YALGOO MERINO EWE SALE

Saturday 31 January 11:30am via AuctionsPlus
ACC: Yalgoo Partnership

600 x 2024 drop Merino Ewe Lambs/Hoggets
589 x 2024 drop Merino Ewe Lambs/Hoggets

Elders Walcha 6774 2600
James Sharpe 0409 272 490
Tom Henry 0409 659 877
Shane Rule 0427 456 878



Australia Day, 26 January 2026

Australia, The Great Southern Land,
The Land down under, made famous by the band.

We are many, but we are one,
Through deeds of sacrifice, our freedom was won.

Whether traditional, convict, immigrant or born,
We are all Australians, standing together, not torn.

From Walcha to wherever, being Australian is a choice,
Play your sport, enjoy a beer, you always have a voice.

The lucky country, the greatest country, to live and work and play,
From traditional owners to today, this is the Australian way.

So, let's be patriotic, let's stand and fly the flag,
Remember our long rich heritage, waltzing matilda and a swag.

Today we're all Australians, stand united, say G'day,
Be grateful, be forgiving, Let's celebrate Australia's day.

~ Gary Olrich ~

School Holiday Golf

Walcha Golf Club hosted a School Holiday clinic for primary and high schoolers last Thursday. Golf NSW Regional Manager Sophie Cusack travelled from Tenterfield to teach the eager participants the MyGolf program. They all enjoyed a BBQ after the session.



1PM TUESDAY
3 FEBRUARY 2026

old
woombi
POLL DORSET STUD



Chain-o-Ponds
BORDER LEICESTERS



ON-PROPERTY RAM SALE



LOT 7. CoP--249005
SIRE: I 220009



LOT 43. OW-240087
SIRE: OW 220009



LOT 8. CoP-249077
SIRE: T 210141



LOT 12. CoP-249001
SIRE: I 220009



LOT 32. CoP-249132
SIRE: COP 219015



LOT 41. OW-240052
SIRE: OW 220193



LOT 47. OW-240053
SIRE: OW 220009



LOT 68. OW-240385
SIRE: OW 220009

120 QUALITY RAMS

- 40 BORDER LEICESTER
- 80 POLL DORSET

'Ashfield' Oxley Highway, Walcha NSW 2354

Sam and Kate Lisle

02 6777 2605 or 0427 773 944

INTERFACED LIVE WITH

 AuctionsPlus

Elders Walcha02 6774 2600
James Sharpe0409 272 490
Scott Cooper 0427 674 411

Elders

SCAN THE QR CODE
TO VIEW OUR 2026
SALE CATALOGUE





EXCITING NEWS

At Davidson Cameron & Co Walcha, we combine extensive local knowledge with the reach and resources of a national network to deliver quality results for our clients. Our services include:

LIVESTOCK SALES - processor, feedlot, saleyards, online & stud sales

RESIDENTIAL PROPERTY SALES - home & investment

RURAL PROPERTY SALES - grazing & lifestyle

FINANCE - livestock, stud stock & trading

MACHINERY - clearing, dispersal & online

INSURANCE - farm, home & equipment

LIVESTOCK SALES - WELCOME NICK ROGERS

Nick is a proud Walcha local, with over 10 years' experience as a stock and station agent with DCC. Throughout his career, Nick has worked across north-western NSW before returning home to Walcha with his family. Nick attends weekly sheep and cattle sales across the region and is a competent Level 1 sheep and cattle assessor for AuctionsPlus. He has built strong relationships with buyers for paddock sales and feedlot contracts and brings valuable expertise in Stud Sales. Nick is dedicated to serving his long-standing local clients and excited to welcome new ones. Please drop by the office or reach out to Nick directly.

REAL ESTATE SALES - WELCOME COURTNEY WARK

We are delighted to announce that Courtney Wark has completed her Certificate in Real Estate Practice. Courtney is ready to assist vendors with the marketing of their property using innovative strategies and modern technology including professional photography, videography, digital floor plans, social media campaigns, internet marketing and 24/7 electronic window displays. With 10 offices across the region, we are well-positioned to connect sellers and buyers. We invite you to visit our office or contact us to discuss how we can assist you.

NICK ROGERS: 0429 382 108

TROY DAVEY: 0427 157 557

ANDREW BLOMFIELD: 0428 667 402

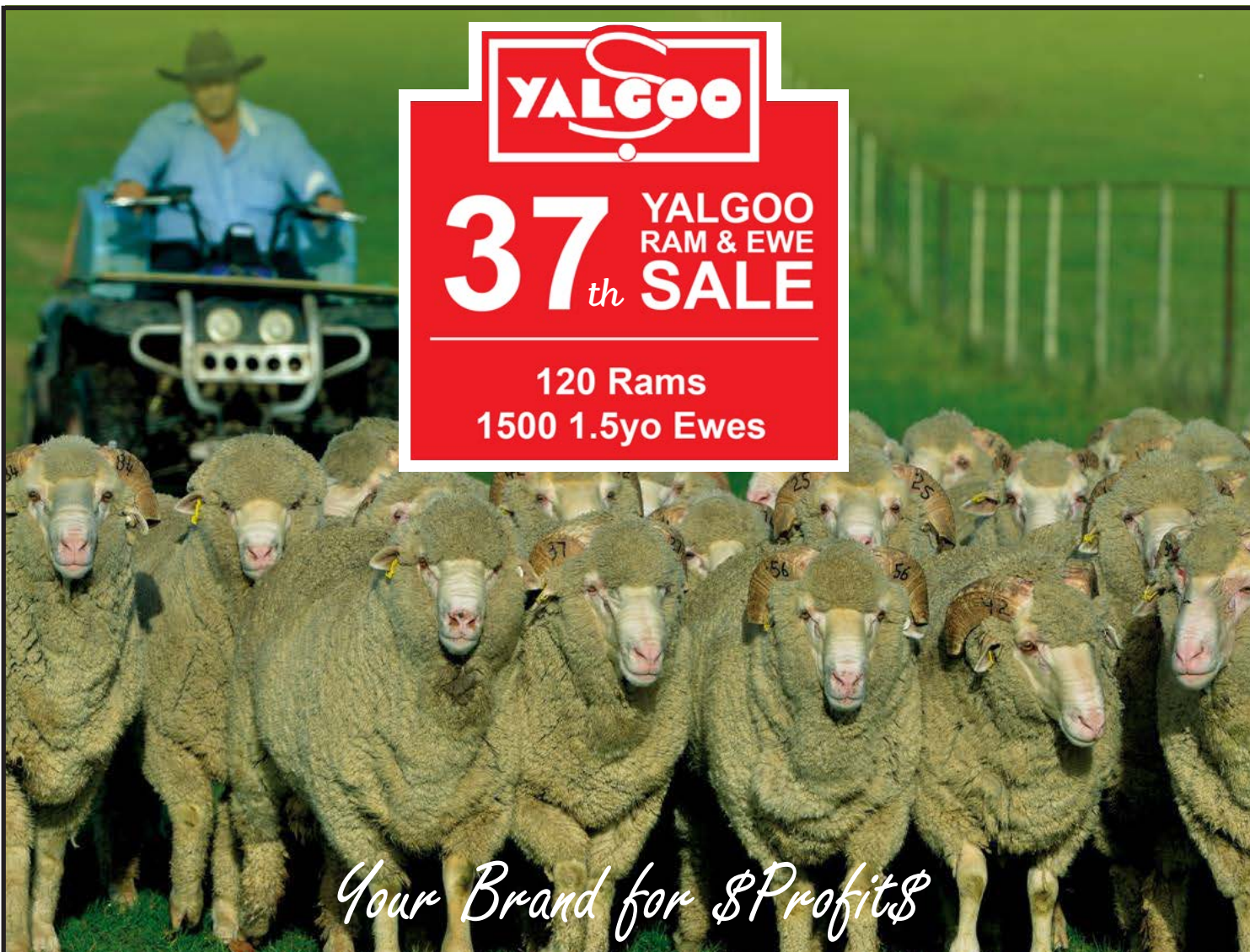
COURTNEY WARK: 0436 479 158

3W FITZROY STREET WALCHA NSW 2354

Let us do the

HARD YARDS







37th

YALGOO
RAM & EWE
SALE

120 Rams
1500 1.5yo Ewes

Your Brand for \$Profit\$

Saturday 31 January 2026

ALL BASES COVERED!

***Congratulations to our
long term clients***

Wool

Scrubby Gully - \$550/kg

Ashby - \$330/kg

Meat

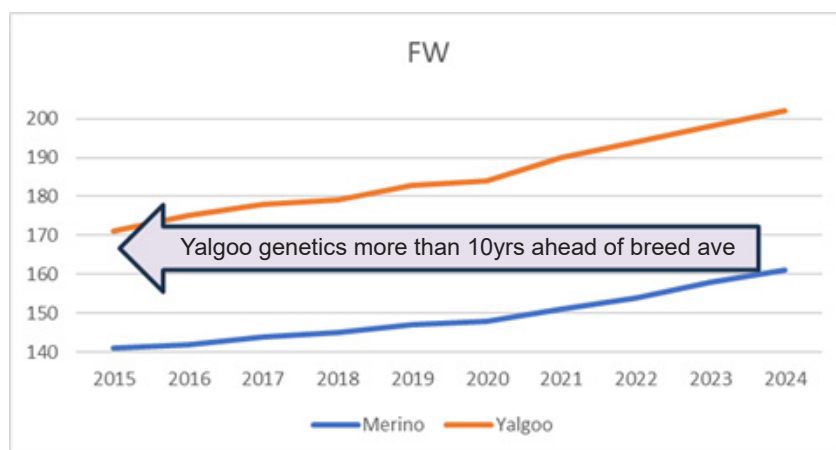
Blaxland - \$301/hd ave (merino lambs)

Profit

Henry and Kate King - \$/hd and \$/DSE winner
of DPI wether trial from 27 teams

Industry Recognition

- Yalgoo has the 2 all all-time highest FW ranking rams for Merino Superior Sires
- The 2nd all time highest ranking WP and SM ranking ram for Merino Superior Sires



Jock Nivison 0497 762 977
James Sharpe 0409 272 490

Tom Henry 0409 659 877
Nick Hall 0436 449 033



45ft flat top • 45ft single deck cattle float • 26mtr B Double
19mtr mini B Double • Low Loader available for hire



BRIAN
Smith
**TIMBER
TRANSPORT**

Call us for
your large
Transport
needs

WALCHA
02 67772126

Bonnie Smith 0429 772 077
Brian Smith 0427 780 216

what's the goss

with AJ Cross



Congratulations to local sculptor Stephen King on being awarded the Medal of the Order of Australia for his service to visual arts when Australia Day Honours were announced for 2026. Good on ya Horrie (OAM).

...

Congratulations to Woolbrook Rough Rider Gerard 'Westy' Oversby on being named ABCRA All Round Cowboy when the National Finals were held in Tamworth last weekend. 'Westy' finished on 212 points, seven points clear of runner-up Josh Barnett.

...

Well done to Junior Rough Rider Benji Provost who finished second in the 8 to Under 11 Mini Bull Ride standings. His older brother Lachie finished fourth in the 11 to Under 14 Mini Bull Ride standings. Good job boys.

...

Congratulations to 2026 'Walcha Citizen of the Year' Jenny Hoy who on a very rare occasion was lost for words when she received her award. When she graced the microphone Jenny said that usually she could talk under water with a mouth full marbles which certainly didn't happen Monday at McHattan Park. Well it may have occurred after all the formal stuff was over. Good on ya Jenny.

...

Congratulations are also in order for Young Citizen of the Year Logan Stace, Senior Sportsperson Mitchell Scrivener, Junior Sportsperson Kix Brown, Community Group the 2025 Lexus Melbourne Cup Tour Committee and Walcha's Oldest Citizen Gwen Lisle who reaches the remarkable milestone of 103 years young later this week.

...

Australia Day Ambassador Jane Rutter not only kept the crowd in attendance entertained with her flute playing, she also came out with some jovial comments during the ceremony to celebrate the people in our community who deserve recognition not only for the past 12 months but before that as well.

...

Well done to former Walcha resident, who attends University in Newcastle, Iona Stanton a talented gymnast and pole vaulter on her recent sporting achievements. After finishing with a silver medal at the NSW Country Championships in the Womens Open Pole Vault not long back, the 21 year old collected a bronze medal at the ACT State Championships last weekend. Currently her PB is 3.5 metres. Good job Iona.

...

Best of luck to local cricketer Ed Blomfield when he heads to Adelaide next week to play in the over 40's National Championships. Ed has been selected in the NSW Emus team to be captained by former Kentucky all rounder Jamie Andrews who now resides in Gloucester. All the action kicks off this weekend.

...

Bad luck to the Walcha/Uralla 2nd Grade Cricket team who were defeated by 40 runs in the Armidale District T20 final by Armidale City/UNE at the Armidale Sportsground on Australia Day. All-rounder Matt Jackson tried his best to lift his team by capturing 3 for 19 off his 4 overs and then top scoring with 30 runs from 26 deliveries.

Financial Services



- Rural and Commercial Finance
- Leasing
- Home Loans
- Insurance Premium Funding

Kel Penfold

6766 5309; 0427 667 118

thumbs



- To Dallas at Richos Rural for his friendly, helpful and knowledgeable service. What an asset to that business.
- To Linmac Co for great service. Brian and Lisa were very friendly and helpful.
- To the young people driving around doing burnouts at night.

Contributions will be received in person, by phone or email and must be accompanied by your name and contact details. They will be printed at the discretion of the editor.



Ladies Bowls

Last Thursday there were two games of pairs played. Joy Sly and Rosie Aitken lost to Marie Spink and Esther Hunt 17-8. Janice Rizzi and Margaret Tickle played a very close game against Lee McCoy and Phyllis Hoy winning by one point on the last end 13-12.

If you have never won a Minor Singles or a Major singles event, then you are eligible to play in the Minor Singles which commences on 12 February. Names are to be on the board by 5 February. There is bowls tomorrow 9am for a 9.30am start.

Bowls

Thursday results: Noel Goodwin & Barry Kliendienst defeated John McCormack & Tony Asmus 22/11. Greg Carter, Geoff Salt & Warwick Hogan defeated Jason Asmus & Mat Andrews x2 16/9. Noel & Barry won the chooks. Tony Asmus & Robbie Hunt were successful in the raffle.

The pennant players had a good roll up on Sunday afternoon.

Numbers are shaping up ok. Next Saturday morning the 31st January we are having a trial against Bendemeer starting at 11am at Walcha BC, followed by a sausage sizzle, mufti dress.

The final of the A grade Singles will be played on Saturday afternoon 31st January between Stephen Goodwin & Barry Kliendienst at 1pm. Greg Carter will umpire the encounter. Good luck Barry & Norm.

The Open Triples Carnival Played on Thursday 5th Feb still has a couple of vacancies

At the Nineteenth

Over 30 players teed off in the 'Draw for partners multiplier' event for trophies donated by Wayne Brennan and Mal Ballard last Sunday where Barry Hoad and Dougal Payne ran out the winners with a score of 82.

Runners up were Ollie Crawford and Jenny Lisle 77 whereas the remaining sweepstakes went to Will Archdale and Julie Hoad 75, Andrew Crawford and Sue Partridge 64, Willy Brennan and Margaret Davidson 63, Anne Martin and Simone Sweeney 62, Brian Lynch and Vicki Heffernan 62.

Sharpest shooters at the pins were Will Archdale (3) and Don Brooks (16).

Word has it prize suppliers 'Brenno' and 'Former English Wrestler' Mal, who played together, found the going a bit tough struggling to generate many numbers.

Last Saturday a very good field of 14 players played in the weekly 9 hole competition and it was chief organiser John McCormack who won after accumulating 20 stableford points.

Retired Commonwealth Bank Manager Anne Martin was runner up on 19 points which included the N.T.P on 3.

Next Sunday is a Stableford round for a trophy donated by Angus Warden.

Cricket

The Walcha/Uralla 2nd Grade cricket team was defeated by 40 runs when they played Armidale City/UNE in the Armidale and District 1st Grade T20 final at the Armidale Sportsground on Australia Day.

The hosts made 6 for 139 off their 20 overs where visiting trundler Matt Jackson snared three wickets at a cost of 19 runs while openers Matt Harper and Peter Mooney both claimed a victim as did Jay Grills.

In reply Walcha/Uralla were bundled out for 99 runs early in their 17th over after Matt Jackson top scored with 30 runs, Daniel Boyd made 19, Will Fletcher remained unconquered on 14 and Shannan Rafferty contributed 13. Last Saturday at Lambert Park Walcha/Uralla qualified for the 'Big Dance' when they defeated Hillgrove by 7 wickets. Hillgrove made 7 for 113 off their 20 overs where W/U opener David Ford captured 4 for 17 fellow opener Matt Harper 2/16 and Jay Grills 1/20.

In reply W/U passed their assignment in their 16th over thanks to 61 runs from the consistent Daniel Boyd who put on an 80 run second wicket partnership with his skipper Ed Blomfield who made 27 runs.

Here at Peter Fenwicke Oval Hillgrove 6 for 117 defeated Walcha/Uralla all out 108 in their 3rd Grade fixture last Saturday.

When Hillgrove batted all six W/U bowlers Hugo Ussher 1/10, skipper Nathan Laurie 1/11, Matt Tasik 1/19, Blaine Moore 1/19, David Morley 1/21 and Ben Ussher 1/34 picked up a wicket each.

In reply the hosts needed 9 runs with two wickets up their sleeve off the final over before veteran Bob Jex was bowled first ball and then the game was finalised next delivery when Gary Brown was trapped LBW.

This Saturday 2nd Grade play Hillgrove in Armidale and 3rd Grade play Armidale City/UNE here at Peter Fenwicke Oval.

Walcha/Uralla v Grove 1st Grade

Grove

G RYAN st E Blomfield b J Grills	23
D SCHMUDE c E Blomfield b D Ford	1
L KIEL b M Harper	8
C LITCHFIELD b M Harper	46
B KING n.o	14
I RANGER c D Boyd b D Ford	3
F BERRY c W Archdale b D Ford	4
B LAURIE c W Fletcher b D Ford	2
Total 113 (20 overs) Extras 12	

Bowling (overs/maidens/runs/wkt): M Harper 4-0-16-2, D Ford 3-0-17-4, P Mooney 3-0-14-0, W Fletcher 3-0-15-0, M Jackson 4-0-27-0, J Grills 3-0-20-1.

Walcha/Uralla

E BLOMFIELD st b L Kiel	27
J GRILLS lbw M Woods	4
D BOYD b H Biddle	61
M JACKSON n.o	4
S LITTLE n.o	7
Total 114 (15.2 overs) Extras 11	

Bowling (overs/maidens/runs/wkt): R Harris 2-0-13-0, M Woods 4-0-22-1, C Litchfield 1.2-0-11-0, L Kiel 3-0-25-1, B Laurie 2-0-16-0, H Biddle 3-0-23-1.

Walcha/Uralla v Grove 3rd Grade

Grove

P TOWNSEND c B Mullen b N Laurie	7
A COWAN c B Dwyer b D Morley	16
B DEXTER b B Ussher	0
J FROST c D Morley b H Ussher	31
T JONES b M Tasik	8
C FROST c N Laurie b B Moore	12
L EASTWOOD n.o	15
H EASTWOOD n.o	12
Total 117 (20 overs) Extras 16	

Bowling (overs/maidens/runs/wkt): B Ussher 4-0-34-1, N Laurie 4-1-11-1, D Morley 4-0-21-1, M Tasik 4-0-19-1, H Ussher 2-0-10-1, B Moore 2-0-19-1.

Walcha/Uralla

B MULLEN b L Eastwood	0
B DWYER st P Townsend b T Lloyd	23
B MOORE b T Lloyd	8
M TASIK b M Eastwood	1
D MORLEY c P Townsend b C Frost	26
N LAURIE lbw R van der Veer	14
S HASLEM c J Frost b H Eastwood	2
H USSHER n.o	9
B USSHER c A Cowan b C Frost	2
B JEX b T Lloyd	1
G BROWN lbw T Lloyd	0
Total 108 (19.2 overs) Extras 22	

Bowling (overs/maidens/runs/wkt): C Frost 4-1-19-2, L Eastwood 4-0-16-1, H Eastwood 2-0-10-1, M Eastwood 4-0-31-1, T Lloyd 3.2-0-12-4, R van der Veer 2-0-15-1.

Walcha/Uralla v Armidale City UNE 1st Grade Grand Final

Armidale City UNE

J MARTIN c M Jackson bn J Grills	19
L MEPHAM b M Harper	7
K TRIEBE c W Fletcher b M Jackson	45
S STUBBS c W Archdale b M Jackson	31
C BRENNAN st B Hoy b M Jackson	6
C ROFE n.o	11
O STUBBS c S Rafferty b P Mooney	3
G Baker n.o	1
Total 139 (20 overs) Extras 16	

Bowling (overs/maidens/runs/wkt): M Harper 4-0-19-1, P Mooney 3-0-22-1, W Fletcher 3-1-19-0, J Grills 3-0-23-1, Matt Jackson 4-0-19-3, E Blomfield 3-0-37-0.

Walcha/Uralla

J GRILLS c C Rofo b F Maher	5
S RAFFERTY c J Martin b O Stubbs	13
D BOYD b O Stubbs	19
S LITTLE c L Mephram b S Stubbs	8
E BLOMFIELD b S Stubbs	1
M JACKSON b S Stubbs	30
W ARCHDALE lbw K Triebe	0
B HOY b K Triebe	0
P MOONEY b S Stubbs	1
W FLETCHER n.o	14
M HARPER b K Triebe	1
Total 99 (16.1 overs) Extras 7	

Bowling (overs/maidens/runs/wkt): O Stubbs 4-0-15-2, F Maher 2-0-22-1, C Wild 1-0-8-0, S Stubbs 4-0-15-4, K Triebe 2.1-0-9-3, I Stubbs 2-0-20-0, G Baker 1-0-7-0.



Memorial

There will be a gathering to remember
Bridget, Bid, "B" Nivison (nee Pennefather)

11am, Saturday 7th February
at "Mirani", Walcha

Please let us know if you are attending:
bnmemorial2026@gmail.com

or scan



Anniversary



Congratulations Johnny & Lynn Watts
on their 60th Wedding Anniversary
celebrated 29 January.
Love from all the family!

Public Notices

DR GENEVIEVE FREER

Phone 6777 2068 | 0429 668 583

WALCHA COUNCIL

**Part Day
Public Holiday**



A part day public holiday is to be observed in the Walcha Council Local Government Area commencing at 12 noon and finishing at 6:00pm on Friday, 6 February 2026 for the Walcha Jockey Club's Race Meeting.

The Public Holidays Amendment Order 2025 under the Public Holidays Act 2010 was signed by the Minister for Industrial Relations on Tuesday, 16 December 2025.

Stephen Parry, General Manager
Walcha Council, PO Box 2, Walcha NSW

Preschool Orientation Day



All families who have children enrolled at Walcha Preschool for 2026 (or are thinking about it) are invited to attend the orientation day on Saturday 31 January 2026 from 10am-12pm at the Preschool.

This day is to introduce your child to the preschool environment, and to give them an opportunity to explore and settle in with you there. Many of the preschool staff will be there so come along and meet our educators and have a look around at our preschool. This is also a great opportunity to ask any questions that you may have.

Enrolments are now open and can be completed online by going to: <https://walcha.nsw.gov.au/community/children-young-people/walcha-preschool/>

Children need to be three to attend preschool. Enrolments will be taken and places held for children turning three before 31 July 2026. Children turning three after this date will be able to attend if vacancies exist, but places will not be held for them.

Council will be answering any questions you may have, and providing information about fees, subsidies, bus days, extended hours and the preschool program that is based on the Early Years Learning Framework.

For enquiries please call Alice on 02 6777 2117 or Walcha Council on 02 6774 2500.

Stephen Parry, General Manager
Walcha Council, PO Box 2, Walcha NSW

Come Try

Walcha Polocrosse Club will be having a practice on the 8 Feb. New members are welcome. Call Kersten Wall 0467 773 891 or John Donnelly 0488 771 869 for more information.

For Sale

Laver pullets, all breeds, 20 weeks. Delivered Friday 13/02/2026, Phone Jim 0428 194 105.

Grey Pony Mare eight years old 13 hands high. Would make a lovely companion mare. Can catch and pat in the paddock. Teeth and vaccinated. \$250.00 Adoption fee. Contact Mark Taylor 0418 610 324.

Grey Brumby Filly 12 hands, two years old Nice sort, very limited handling. Would make a good project horse for an experienced horse person. \$250.00 adoption fee. Contact Mark Taylor 0418 610 324.

For Sale

Poriya Lawn Mower, 16" with 40ltr catcher, 5hp motor, brand new/never used, \$230. For more info call Phil on 0468 345 324.

Support a local business ... don't send your printing away!

The Walcha Telecottage
have got your printing
needs covered. We can
design and print almost
anything you require.

- Catalogues
- Brochures
- Flyers
- Newsletters
- Business Cards
- Letterheads
- Invoice Books
- Invitations
- Postcards
- Greeting Cards
- Signs
- and more ...

telecottage
WALCHA

Phone 6777 1111
wtc@walchateleccottage.com.au



LUX ELECTRICAL

LEE HARRISON
0448 840 461
leeharrisonelectrical@gmail.com

LICENCE NO. 480735C
CCTV | SECURITY SYSTEMS | RE-WIRES | LIGHTING & POWER | SAFETY
SWITCH UPGRADES | RENOVATIONS | INSTALLATIONS & MAINTENANCE
FULLY LICENCED & INSURED

Nick Moore PLUMBING & EXCAVATION SERVICES

WALCHA & SURROUNDING AREAS



Highly qualified and experienced plumber
All aspects of Plumbing and Gas Fitting
Wood heater installation
Roofing and Guttering
Gold License No 59555C

Nick 0418 691 306
nickmoore203@yahoo.com.au
Katy 0422 034 660

SELF STORAGE

NORTH STREET – WALCHA
Various sized sheds
Security fenced

0439 584 344
or 0428 653 307



Stress Management and General Counselling
Appointments available in Walcha on Monday and Wednesday Afternoons
Peter Barton
Accredited Social Worker (MAASW)
0494 379 663

A G W RURAL CONTRACTING

GPS Equipped boom spraying
Andrew Wauch 0427 549 748

MOBILE-FIX AUTO+AIR

Mobile Repairer & Airconditioning Specialist
Lic.No.46696 RTA Lic No. AU/22616
PATRICK STACE – WALCHA
Mob. 0428 780 077 Ph. 6778 0595



ENGINEERING

John Wall
• Stock floats • Feeders • Sheep & cattle yards • Steel framed sheds & mobile welding
6778 0588 • 0428 778 087

STACES FAST FREIGHT

Delivering
Tamworth – Walcha
0429 608 409



CHIROPRACTOR

Samantha Goor
B.Sc. Anatomy (NSW) M Chiroprac (Macq)
Tuesday & Friday from 9.00am
6777 1340

AQF3 ARBORIST
Tree lopping & removal
Truck
Bobcat
Post hole digger
Trencher
Woolshed Cleaning

Scott Kermode
0427 100 889



treetopservices@bigpond.com

ADVERTISE YOUR BUSINESS ON THIS TRADE & PROFESSIONS PAGE

Small Trade Ad \$30 • Large \$40



WALCHA HIRE
Andrew: 0427 549 748
Toni: 0421 972 354

DISCLAIMER LETTERS TO THE EDITOR are submitted on the condition that The Walcha Telecottage as the publisher of The Apsley Advocate may edit and has the right to, and license third parties to reproduce in electronic form and communicate these letters. They are published at the discretion of the Editor and Board. The Apsley Advocate is printed by The Walcha Telecottage, PO Box 116 Walcha NSW 2354. Phone 6777 1111 Fax 6777 1112. The Walcha Technology Co Operative Limited, the Editor and Staff of this Newspaper have published any article here-in in good faith and bear no responsibility in respect to the accuracy of the information contained in such article. Any person or persons publishing material in this Newspaper do so in the knowledge that they shall personally accept any responsibility for the accuracy and other correctness of such articles and also accept full responsibility for the legal consequences if it be found that the article contains any inaccuracies in the contents of any such articles.

DEADLINE MONDAY 4.30PM Editor: Anthea Nivison. Advertising/Sport: Megan Scrivener, Joscisca Matapakia and Kate Connors.

church notices



ANGLICAN

February 1 - 9.30am Walcha Service
2.00pm Niangala Service

February 8 - 9.30am Walcha Service
2.00pm Nowendoc Service

February 15 - 9.30am Walcha Service

February 22 - 9.30am Walcha Service

Anglican church

Phone 6777 2543

or email: walchaanglican@gmail.com

PRESBYTERIAN

Walcha: every Sunday 9:30am

Youth Group every Saturday 5pm - 7pm, during term.

All welcome.

Phone 6777 2539.

CATHOLIC

Sunday Mass 10.00am

Marchant

BROS. PTY. LTD. Est. 2000



BULK WATER DELIVERY AVAILABLE

A FULL RANGE OF AFFORDABLE TRANSPORT & EARTHMOVING

Dam construction/maintenance, stick raking, gravel available, road building, site prep, pipe laying and all timber work. Check out our website for the full range of machinery, attachments and services available.

FIREWOOD AVAILABLE DELIVERING NOW

Earthmoving and Heavy Haulage Transport
Jason 0427 490 487 • Jamie 0429 771 351
 02 6777 2024 marchantbros@bigpond.com
 www.marchantbros.com.au



OK EARTHMOVING

SPECIALISING IN ROAD CONSTRUCTION & MAINTENANCE

- Bulldozers
- Excavator 2t - 30t
- Truck and Dogs
- Gravel supply
- Graders
- Rollers
- Skid steers + multiple attachments
- Forestry mulching
- Land development
- Large Dam construction

Peter O'Keefe : 0429 944 821
Will O'Keefe : 0488 925 845



Proudly servicing Walcha and surrounding districts for over 30 years

WALCHA

BOWLING & RECREATION CLUB

"Let the good times roll"

WHAT'S ON?

Thursday 29 12.00pm – Close

BOWLS 9.00am Ladies, 1pm Social

Friday 30 2.00pm – Close

2.00PM BINGO 6.00PM BISTRO

6pm Raffle tickets meat & vege trays

7.30PM FREE BINGO

8.00PM Raffles and Members draw

BISTRO

Chicken cutlets

Baked BBQ lamb chops

Prawns and oyster board

• Home deliveries • Town limits only

FOR CATERING NEEDS CALL:

Dianna – 0412 536 760 or 5722 6003

Saturday 31 11.00am – Close

5.00PM BISTRO

Sunday 1 11.00am – Close

12.00PM BISTRO

Raffle tickets from 12pm, drawn 1pm.

**MEMBERS
DRAW
\$50**

YOU MUST BE A MEMBER
FOR 2025/2026 TO BE
ELIGIBLE TO WIN

UPCOMING EVENTS:

Valentine's Day

More details coming soon



DO YOU LIVE IN WALCHA SHIRE?

If so you MUST be a member
to enter the Club

Social Membership \$15. Full

Membership \$120.

PHONE 6777 2077



Wayne Hoy: 0427 281 060
 Matthew Hoy: 0427 322 640
 Aaron Bullen: 0409 776 340

SPRAYING EXCAVATING EARTHMOVING

GPS & Auto Steer Equipped

Remote Aerial Spraying & Spreading
 4x4 Truck & Boomspray, Quickspray Trailers
 4x4 Tractors & Casotti's

