

THE APSLEY Advocate

CIRCULATION 1920 – P 02 6777 1111 F 02 6777 1112 wtc@walchatelecottage.com.au walchatelecottage.com.au

22 April 2026

Nutrien  Boulton's

WANTED

XB Store Lambs
30–40kg
Competitive
on farm prices
available

Contact Dan
for specific prices
& quotes

Dan Coulthurst
0419 879 793

 LAW EXCHANGE
PROPERTY & CORPORATE LAW

MICHAEL MCHUGH
BA LLB (Hons)

Acc. Specialist - Property Law
Australian Legal Practitioner

Property Law & Conveyancing
Company & Business Law
Dispute Resolution
Succession Planning
Wills and Estate

17/429 Peel Street, Tamworth

WALCHA
By Appointment

6768 0888
0418 658 217

mmchugh@lawexchange.com.au
www.lawexchange.com.au

More than a job: Why more locals are stepping forward in Walcha



In Walcha, stepping forward has never been about recognition.

It's about doing what needs to be done. That mindset sits at the core of Fire and Rescue NSW Station 481, where a small crew continues to respond across the district — and is now looking for a few more locals to join them.

"It's not just a job. It's a challenge. It pushes you, and it builds you," Firefighter Aiden said. On-call firefighters come from all walks of life — farmers, tradies, professionals — maintaining their everyday jobs while taking on a second role in their community. The structure makes it possible. It's paid, flexible, and built around availability. Training covers firefighting, rescue, and first aid — but the real impact goes further.

"You learn to stay calm under pressure. You learn to rely on your team." That team is central. A close, trusted group built through shared experiences — where every member depends on the other. "It's

not just working together — you rely on each other."

Over time, that carries into daily life — building confidence, discipline, and a stronger sense of responsibility. For many, it also sets an example at home. "Your kids see it. They understand what stepping up looks like."

No prior experience is needed, training is provided. The pathway is clear. For those considering it, the crew is making it easy to start. Residents can attend any drill night to observe training and meet the team (the next one, 6–8pm Tuesday 28 April).

An information session will be held at the Commercial Hotel from 6:30pm on 23 April. Firefighters will also be available at Walcha Parkrun each week in April and during ANZAC Day events. It starts with a conversation.

In a town like Walcha, opportunities like this don't come often, and are not available indefinitely. Applications close on 30 April at 11:59pm

100% Australian Manufactured



Goldacres Small Frame 3 - Point Linkage Sprayers

TOUGH, RELIABLE & VERSATILE

Engineered for precision and performance, ranging from 600 to 1000L and Boom options from 4 to 12m, we've got the perfect fit for every job.

 WVS
WALCHA VETERINARY SUPPLIES

6 Aberaldie Road Walcha. Phone 6777 2588 • www.wvs.com.au



CIVIL CONSTRUCTION EXPERTS

OUR PLANT:

- ✓ D6T Dozer - 18ft Stickrake + GPS + Lazer grade
- ✓ 5t,13t, 20t, 36t Excavator GPS, grabs, screen
- ✓ 2t -12t tipper & dog, 40t moxi, water cart
- ✓ Positrack, tractor, augur, post driver

OUR SERVICES:

- ✓ Wet and dry hire options
- ✓ Driveways, dams, pads, quarry
- ✓ Sheds, bridges + farm infrastrucure
- ✓ Design & Engineering services

CONTACT GLEN
0403 726 780
 OXLEYCIVIL.COM.AU
 VISIT FOR A FULL RANGE OF
 EQUIPMENT & SERVICES

**COMPETITIVE
 RATES**



around the traps



By BRUCE RUTHERFORD

Another week of dry weather with a few frosts thrown in has not helped seasonal conditions around Walcha, but more specifically from the central west of NSW to central QLD. There are a few patches in this area that have had the benefit of some rain, but generally seasonal conditions are deteriorating rapidly for a large area west of the ranges in the northern half of NSW and the southern half of QLD. There is nothing in the way of rainfall on the radar either.

South western QLD and far western NSW appear to be in a purple patch with plenty of feed and pastoral conditions well above average. I have been talking with some graziers to the west of us who have been desperately chasing agistment for large numbers of cattle. They tell me there is not much coming forward outside the far west of NSW. The feed is apparently very good and they have a good 12 months ahead of them. The trick might be getting them back! Someone suggested this week this may be a great exercise for virtual fencing with all the cattle heading into that country.

Cattle numbers through saleyards have certainly continued to defy everyone's expectations. Talking with agents several weeks ago, they were suggesting the numbers would not last, but there are a lot of cattle out there running out of feed and in some cases water. I do remember in past droughts wondering how long numbers can keep coming, but it is a big country and many leave the exit until too late believing numbers will back off and prices will improve. Eventually you find yourself in mid-winter with cattle having fallen apart and only weeks before calving! It is always so tempting to hang in there in the hope conditions improve.

On the numbers through saleyards, I am not sure what is yarded today (Tuesday) in Gunnedah or Inverell, but in the last week we have seen Tamworth yard close to 7,000, Gunnedah with a handful more, Inverell 4,500, Armidale 4,000, Dubbo 11,000 and Dalby with 9,000. It is no wonder prices are coming off the boil. I didn't quite catch the complete report, but I am pretty sure one analyst talking on the ABC's Country Hour last week said that there had been 50,000 cows sold in New England saleyards in the last month. That is an amazing number given it does not take into account numbers sold direct from farms or on Auctions Plus.

The cattle market has held together so well until this point and just this week we are seeing values come under pressure. Restockers have backed off as conditions have stalled in the south and the weight of numbers is now playing its part. Prices for plainer conditioned cattle have been most affected while heavy cattle are still keenly sought after, particularly from southern processors. Heavy cows are still selling well albeit cheaper, but plainer conditioned cows are meeting with less competition every week. I am told one buyer bought a large percentage of the cows yarded in Tamworth last week, with many of the lighter cows headed for the far west and the channel country.

The Walcha High Country Guardians had a huge result with their petition over the weekend, to have the proposed Transmission project south of Walcha through to Bayswater debated in the NSW Parliament. The Guardians needed 20,000 signatures to force the Parliament into a debate and it was so good to see this gain so much traction over the last month or so. This is not an easy task as over the last two years less than 5% of these petitions get across the line. There is now so much interest in this project we are hopeful we can at least have it independently assessed. Energy Co is a state agency and have done everything they can to ignore impacted landholders and push this project through. It is a disgrace and points to just how few votes we have in the bush. These projects are necessary to connect renewable projects to the grid, but there are much more suitable corridors than this with much less impact on habitat and prime agricultural land. A huge thanks to all who have supported us in our endeavour for better outcomes for impacted landholders and NSW taxpayers.



FENCING & ENVIRONMENTAL SERVICES

Protect your property and invest in your land with professional, durable solutions tailored for the rural landscape.

FENCING SERVICES

Focused on large scale project & annual programs 'Heat On Ag' provides:

- Standard Steel Fencing • Exclusion Fencing • Security Fencing

ENVIRONMENTAL SERVICES

Enhance your land's health and meet your conservation goals:

- **Erosion Control:** Professional grading, drainage solutions, and ground stabilisation to prevent soil loss.
- **Tree Planting:** Large-scale re-vegetation and windbreak installation to improve shelter and biodiversity.

SAFETY, QUALITY, QUANTITY | LOCALLY OWNED

Contact:

Dave Healey (Quotes and Admin) 0490 307 766

Ben Fussell (Operations Management) ... 0448 964 519

Walcha SES celebrates 50 years

More support needed

For 50 years, the Walcha SES Unit has been a vital lifeline for the local community, standing ready through floods, storms, and emergencies of all kinds. From storm damage, response to road crash rescues, land searches, and farm accident support, their dedicated volunteers have consistently stepped up when it matters most.

Today, the unit is looking to the future and seeking new members to help carry on this proud legacy. Whether you're interested in hands-on fieldwork, rescue operations, or supporting behind the scenes in administration or incident management, there's a role for everyone. Full training is provided, making it a rewarding opportunity to learn new skills while giving back to your community.

If you're keen to make a difference, come along to training; 7pm, on 2nd and 4th Thursdays of the month at SES, 5W Apsley St, Walcha or to find out more and apply visit www.ses.nsw.gov.au/volunteer.

Last Saturday saw a fabulous reunion celebrating 50 years of the SES in Walcha. Walcha SES all began in 1976 with a group of locals recognising the need to have a locally based rescue squad. "Many parts of Walcha are quite isolated and local SES crews can often get to the incident site an hour faster than other emergency services located out of bigger centres such as Tamworth or Armidale," long-term SES volunteer Peter McNeill said. "This could be the difference between life and death in many instances."

NSW SES was established to enhance emergency preparedness and response across the state. Initially known as the Civil Defence Service until the 1970s, the organisation has since evolved into a vital force in disaster response and community support.

Walcha SES has always been run by locals, the first female members were Mandy Haslem, Carolyn Noon and Lyn Partidge. Initially kitted out with a very basic boxtrailer (that members had to tow with their own vehicles) only containing a first aid kit and metal cutters. Walcha SES then



Celebrating 50 years: John Stuart, Bernie Brady, Shane Paul, Bob Burnell, Norm Miller, Joe Mansfield, Danny Reardon, Steve Lisle, Peter Sendall, Mandy Haslem, Peter McNeill, Warwick Fletcher, Don McHattan, Rodney Bath. Front: Juan Carey and Steve Wiggins.

Past & Current members who were unable to attend :

Colin & Carolyn Noon, Mark Fox, Patrick Stace, David Salter, Cameron Norbury, Lynette Partridge, Chris Feltham, Terry Olsen, Lisa Wratten, Meg Nolan, Lindsay Stace, Ron Dyason (deceased).

raised the money themselves to purchase a proper rescue vehicle. "It was a real community effort to put the first truck on the road," said Warwick Fletcher.

Past and present members joined in the celebrations at "Cairnie", home of Warwick and Jackie Fletcher. Warwick, a long-time SES member himself.

Of the 30 people in attendance, 10-15 were original members, travelling from Tamworth and beyond to catch up with old friends - it was a great day for everyone to catch up and reminisce.

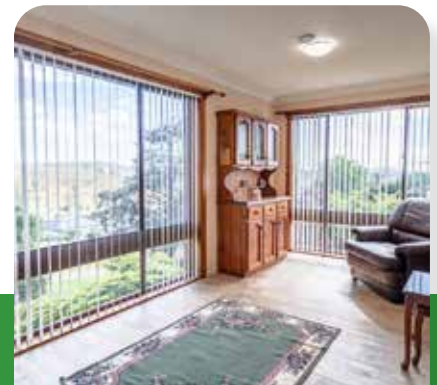


Stock and Property Watch

www.nutrienharcourts.com.au

Looking for listings & rental properties

Call Peta Carter 0407 350 781 today



Anzac Day



Closed
Saturday 25th
Sunday 26th & Monday 27th



Kings Pharmacy Walcha
10N Derby St Walcha NSW 2354
PO Box 72
Ph: 02 6777 1308 | Email: admin@kingspharmacy.net.au

letters to the editor



A message from the Walcha High Country Guardians

As you are all likely aware, hundreds of farmers in our town and region are being threatened with forced acquisition of our land for two rows of 70-80m high 500Kv transmission lines and towers that run over 200km from Bayswater to Walcha. We are absolutely united in saying no to EnergyCo (the government organisation forcing this on us) and supported by a Mayoral Minute from council saying no to the project also.

E-petition - We're very excited that the e-petition to the NSW Legislative Assembly to reject this NE Transmission Project has officially reached 20,000 signatures in the early hours of Sunday morning.

First and foremost, thank you. To everyone who signed, shared with friends and family, showed up at events, and helped spread the word — this milestone is because of you. We've also been fortunate to have strong support behind the scenes from politicians, media, and advocates online. For context, only around 5% of e-petitions that were opened over the past two years have reached the required numbers, so this is a significant achievement that we are very proud of.

The next steps is a date to be locked in for a parliamentary debate that will be run on our behalf by Brendan Moylan with details to be confirmed in the coming days. We're also expecting the return of Upper House documents this week, which should be helpful to our cause.

It's not always easy to measure progress, but this is a clear win. It sends a strong message about how many people are paying attention, care deeply about this issue, and expect accountability and transparency from our government.

Social Impact Assessment - We have been advised that a contractor (Umwelt) engaged by EnergyCo is contacting Walcha residents by phone to conduct surveys regarding the proposed project for what is called a 'social impact assessment'.

We encourage residents to support the united position of Walcha High Country Guardians, alongside other community groups, by either declining to participate in the survey (this is what our members are doing) or clearly stating that the proposed transmission lines are not supported by our community. Key concerns include their impact on prime agricultural land, unique biodiversity, proximity to sites of Indigenous significance, and the broader imposition on our region.

Experience from the Central West indicates these projects can result in significant and lasting impacts, including infrastructure strain, increased heavy vehicle traffic, pressure on local services, social disruption from transient workforces, environmental damage, and long-term economic consequences such as land devaluation and reduced community revenue.

We maintain that compulsory land acquisition for this project is not justified, particularly where less damaging alternatives may exist, such as utilising existing transmission corridors.

We appreciate your continued support.

Japanese Encephalitis

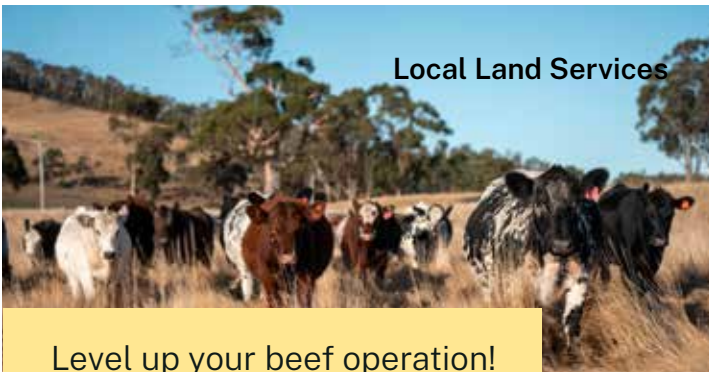
Walcha now declared high-risk area

Walcha has very recently been declared a high risk area for Japanese encephalitis. A serious illness spread by mosquitoes.

Symptoms: Most infections (99%) are mild or asymptomatic. Symptomatic cases (5-15 days after bite) include fever, headache, vomiting, and confusion. Severe cases may develop encephalitis (brain inflammation), resulting in neck stiffness, disorientation, tremors, coma, seizures and paralysis. More information on the illness and vaccines can be found online at www.immunisationhandbook.health.gov.au where you can conduct a search on Japanese Encephalitis.

Kings Pharmacy has a staff member who can administer the vaccine, which is now free of charge since the change of status for our area to being of high risk. Bookings are required, call 6777 2744.

Local Land Services



Level up your beef operation!

North West Local Land Services is hosting the 2026 North West Beef Producers Forum this May.

Stay productive with an update from global market analyst Simon Quilty, tailored seasonal forecasts, advice on confinement feeding and new ag technologies, as well as insights into supply chain requirements.

📍 13 May 2026
Tamworth Jockey Club



Scan to
register or call
1300 795 299



Small town, big results

Sydney Royal Easter Show continued...

After Mick and Jenny Sweeney won both the Grand Champion Merino Fleece and Champion Crossbred Fleece at this year's Walcha Show, the fleeces were then entered into the District Exhibits Wool Competition at the recent Sydney Royal Easter Show.

The Merino fleece went on to win the Medium Merino section and was ultimately awarded Champion Merino Fleece of the Show. Following their impressive double win at Walcha in March, Mick and Jen came close to repeating the feat in Sydney, also earning Reserve Champion Crossbred Fleece.

"The District Exhibits Wool Competition is regarded as one of the premier wool shows in NSW, so it was especially rewarding to achieve this result, particularly off the back of our success at Walcha," Mick said.

Local axemen, Mitch and Austin Scrivener spent 12 days in the woodchop arena. While Mitch made two finals, it was Austin who came home with some outstanding results. A highlight for Austin was making the World Title Tree Felling Final, a goal he has had for many years. Qualifying for the final on Thursday 9 April saw him compete head-to-head against the current and past world champions the following day in front of a capacity crowd. In his first taste of a World Title final Austin cut well and finished eighth overall.

Austin's other results included a second and two thirds in other Tree Felling events, a second in the Standing Block and a fourth in an Underhand. At the conclusion of the show Austin was named the winner of the special Woodchopping Prize for the 'Most Successful Competitor in Tree Felling Events'.

The Station Angus took three bulls and three heifers to this year's Sydney Royal Easter Show. In the Angus judging they placed first in Class 22 Bull over 19 and not over 20mo with The Station Cracking U56, first in Class 26 Bull over 24 and not over 30mo with The Station

Cracking U122, and second in the Abbington Perpetual Trophy for two bulls.

This year Megan Scrivener was back at the Sydney Royal Easter Show officiating in the Show Jumping section. Megan worked with Foreign Judge Nai Yue Ho from Singapore, along with several other Australian officials, and international Course Designer Alan Wade of Ireland, who will be course building at the 2028 Olympics in Los Angeles.



Right: Mick & Jenny Sweeney
Below: Austin Scrivener
Bottom right: Megan Scrivener with fellow showjumping officials

Head First Photos

REAL ESTATE & LIVESTOCK
pitt.son.walcha@bigpond.com
www.pittsons.com.au

Pitt Son's

OFFICE 6777 2000
Sam Payne 0428 667 404
Ron Vincent 0427 775 821

Room to move



- Great views over town
- All facilities ready to go
- Well fenced

5329m²

Quiet Location



- Double block
- Comfortable cottage style home with two bedrooms, lounge room, spacious kitchen and bathroom with a shower and tub
- Has had a new roof, aluminum windows and new skin in recent years
- Double garage with electric doors and separate workshop at rear of shed
- Lovely quiet spot on edge of town with great views

\$360,000 ONO

Locally owned and operated



PKF New England North West Accountants and Business Advisers providing a full suite of professional services to our clients.

IMPORTANT NOTICE
Change to office hours- Effective from April 2026

Mon to Thurs **8.30am - 5pm**
 Friday **open by appointment only**

To discuss your requirements please contact the Walcha office on 6777 2377



45ft flat top • 45ft single deck cattle float • 26mtr B Double
 19mtr mini B Double • Low Loader available for hire



Call us for your large Transport needs

WALCHA
02 67772126

Bonnie Smith 0429 772 077
Brian Smith 0427 780 216

ANZAC Day in Walcha

Walcha residents will have two services in town again this Anzac Day, a Dawn Service and Main Service which will both be held at the War Memorial Monument on the corner of Hill and Derby Streets.

Details of the Services:

6amDawn Service

Walcha Bowling Club will be open for breakfast following this Service

11am.....Main Service

Those wishing to participate are asked to assemble on the corner of Hill and South Streets by 10:30am. The procession will march to the War Memorial, and following the 11am service it will proceed along Derby and Fitzroy Streets to the monument in McHattan Park where a wreath will also be laid.

Walcha RSL would like to invite members of the community to enjoy lunch at the Bowling Club following the March.

The RSL Auxiliary will also hold a street stall on Friday morning.

David Campbell, Walcha RSL President



Bush Fire Danger Period ends

The Bush Fire Danger Period ended on 31 March for most of NSW, including Armidale, Uralla and Walcha Local Government Areas.

During the season, firefighters from the New England District responded to 190 bush and grass-type fires, which burned approximately 7,625 hectares.

As the Bush Fire Danger Period ends, fire agencies and land managers will begin increasing hazard reduction activities where conditions allow, lowering the risk of future bush fires.

Although permits are no longer needed, residents must still notify their neighbours and their local fire authority (easily done on the RFS website) at least 24 hours before lighting a fire.

“Letting fire authorities know about planned burning helps avoid unnecessary callouts for local firefighters.”

Inspector McKean said the end of the Bush Fire Danger Period should not lead to complacency.

“Fires can still occur outside the declared danger period, particularly during dry or windy conditions,” he said.

Residents planning to burn off can notify their local brigade using the online burn notification tool at www.rfs.nsw.gov.au/notify



FridayOpen
 Saturday (ANZAC Day)Closed
 SundayClosed
 MondayClosed
 Tuesday..... 8.30am - 5.00pm

wtc@walchatelecottage.com.au | 6777 1111



RUGBY REPORT

WALCHA V ALBIES

By Eric the Spider

Reggies

Reserve Grade kicked off their 2026 New England Rugby Union season at home against St Alberts College on Saturday. A big crowd enjoyed the classic country rugby atmosphere as the Rams went down 32-52 in a high-scoring affair.

Walcha showed plenty of spirit in the opening round. Steve McAnally at halfback had a strong game, sniping around the rucks and delivering quick ball. Jason O'Keefe at flyhalf controlled play well with smart kicking and flat passes. In the centres, Digby Bell was electric, making strong runs and line breaks. Debutant Jensen Shields starred with two excellent tries, while club legend Sam Martin came out of retirement and scored a try to the delight of the home crowd. Harry Partridge put in a solid all-round performance, and young Hunter Scrivener showed real class on debut with some impressive skills. The Rams pack battled hard up front, but St Alberts' clinical finishing proved too much on the day.

Final score: Walcha Rams 32 – St Alberts College 52. Despite the defeat, there were plenty of positives for the Rams to build on. With a good mix of experience and exciting new talent, Walcha will be looking to bounce back next week.

First Grade

The 2026 New England Rugby Union season burst into life on Saturday, where the Walcha Rams First Grade delivered a heart-stopping performance to defeat St Alberts College 40-35 in a see-sawing blockbuster. In front of a vocal home crowd, the Rams produced some well-structured, disciplined rugby while the visitors from Armidale played an expansive, wide-running game that kept both sides and the spectators on edge right until the final whistle.

The match was a classic country rugby battle—full of big hits, momentum swings, and long range tries. Walcha consistently earned good field position through strong set-piece work and forward carries, but finishing proved tricky at times.

St Alberts, meanwhile, looked dangerous whenever they flung the ball wide, creating overlaps and forcing the Rams defence to scramble.

It all came down to the last minute. With the scores locked in a tense arm-wrestle, Walcha launched one final attack. The crowd rose as one when the Rams crossed the line with just 30 seconds remaining, sealing a dramatic 40-35 victory and sending the home faithful into raptures.

Hamish Heeney was a colossus all afternoon. The big centre produced huge carries that punched holes in the Albies defence and backed it up with bone-rattling tackles that stopped several dangerous raids. In the front row, James Anderson put in an enormous shift at prop. His engine never stopped — relentless scrumming, tireless work around the field, and plenty of hard yards in the tight exchanges. Banjo Lawrence enjoyed easily his best game in Rams colours. The back-rower was dominant with powerful carries and put in a masterclass of relentless defence, chasing everything and making life miserable for the St Alberts attack. Chaden Hawkins was heavily involved throughout, popping up with strong runs, and reliable defence that helped hold the structure together. Thor Crombie, made a successful return to the club by scoring two crucial tries. His finishing under pressure proved vital in keeping Walcha in the contest during the see-saw battle.

Both teams deserve credit for an entertaining contest that had everything: big tackles, slick handling, periods of controlled rugby from the Rams. While Walcha couldn't always convert their attacking opportunities into points early on, their composure and ability to strike when it mattered most in the dying minutes showed real character.

Final score: Walcha Rams 40 – St Alberts College 35.

What a way to open the season! The Rams have set down a strong marker with a hard-fought win built on forward grunt, defensive resolve, and clutch finishing. The mix of experienced campaigners and returning talent bodes well for the year ahead.

Walcha Rugby Union Football Club notice for special general meeting for acceptance of amended constitution, as per changes made and recommended at previous meeting in 2025. All welcome. Tuesday 5 May, 5.30pm - Rugby Club House.

Major Sponsors



Red: New England Hotel, Marchant Bros, The Bolt Inn, LAWD, Robson Wines of Mudgee, Elders Rural Services, Agriforce Machinery, Super Moto New England, TA Field Estates P/L and Commercial Hotel.

White: Nutrien Boultons, SN Nivison, Branga Plains Pastoral Co, Walcha Hire, Nerstane Merino Stud, Sarah Day MTA Travel and Peter Norbury Motors.

Club: Thomas Foods, D & C Kermod, DW & AM Cameron, Merlanie Pastoral Co, Walcha Law, Walcha Vet Supplies, Ben Nevis Angus and Law Exchange.

EnergyCo

News from New England REZ

Hi there, it's Doug Parris again – Project Director for the New England Renewable Energy Zone (REZ) with EnergyCo. I'm back to share another update on our project.

Since publishing our revised corridor for consultation in October 2025, we have received a wealth of local knowledge and feedback from the community. Your insights have been crucial while we work to narrow the 3km-wide study area and to help us understand how you use your land to identify constraints or opportunities.

Thank you to everyone who took the time to provide your thoughts and recommendations. We received over 480 submissions during our 'have your say' period which we have summarised and responded to in a feedback report.

You can find the feedback report on our website at energyco.nsw.gov.au/nerez by scanning the QR code below.

We are considering all feedback received and have already made refinements to our design. We encourage landholders to continue sharing details about how they use their land so we can minimise impacts to properties as we develop the project.

Project next steps

We expect to share an update shortly on the refined 1km-wide corridor. If you are a landholder in the current 3km-wide corridor, we will be in touch to discuss how this may impact your property.

We have also kicked off our next round of social impact assessments (SIA), which aims to understand community views, interests, and concerns and to help us understand the potential impacts of the project, so we can minimise our impacts and enhance the opportunities.

Our SIA survey is available in the 'share your feedback' section of our website, and we invite you to take part so we can hear your views. All feedback will be treated confidentially, de-identified and only used in the SIA report, which will be publicly available as part of the environmental impact statement (EIS). The survey is open from 9 April until 1 May.

Work continues on our EIS in preparation for it to be on public display later this year. We have teams on the ground carrying out essential assessments like biodiversity surveys, geotechnical work (bore holes), visual impact assessments, noise monitoring, heritage surveys and traffic surveys. You may see our teams out in the field as they complete this work, including in public areas like road reserves.



To stay up to date on the project, to provide feedback, subscribe to updates or to see what events we have coming up you can visit our website, www.energyco.nsw.gov.au/nerez or contact us at nerez@energyco.nsw.gov.au or by calling 1800 061 114 (toll free).

Until next time, Doug Parris



AG0091



National Fuel Security Plan

To keep Australia moving, the government has been working to secure fuel supply and has put in place the 4-level National Fuel Security Plan.

We're now at Level 2. So, consider simple actions to use less fuel, like using your car less.

Every little bit helps

For fuel saving tips, visit fuelplan.gov.au



Australian Government

National Fuel Security Plan



By Walcha Garden Club

Autumn is well and truly upon us. Even though it is very dry it is still a busy time in the garden. Tidying up the garden in preparation for winter is probably at the top of the list for most people.

Let's take one step back before winter and do our seed collecting for future planting. Preferably take a photo of what you are collecting for proper identification. If you're not sure what the plant is then ask someone to assist with identification such as garden club members, garden centres or the place it came from. Plant identification APPS are helpful but not always correct. Seeds must be mature before collecting. Choose a dry day and place in a paper bag that is clearly written on as to what the seeds are. Store in a cool, dry place. Fresh seed germinates the best but for long term it is wise to place seed in airtight containers. Create a seed library in order of seasons for the next planting. To collect seeds from pumpkins, squash, melons, rockmelons, cucumbers and tomatoes try the following method. Use paper hand towels and write the vegetable variety for identification as well as a photo of the vegetable. Remove seeds from the flesh and place on the paper hand towel. Leave to dry in a warm, dry room out of direct sunlight. When pumpkin and squash seeds are dry remove the paper like skin before putting seeds in a named envelope.

Spring is such a lovely time of the year so let's start planting in readiness for a colourful display. These days there are so many varieties of bulbs to choose from. Plan your planting. Bulbs look best when planted in groups. Daffodils and tulips look especially captivating with their colour combinations and different styles. Plant directly into the garden or in pots. If planted in garden pots they can be 'layer planted' for an extended flowering season. Start with the largest bulbs in the bottom of the pot and continue in layers with till the smallest bulbs are near the surface. The top of the pot can be planted with colourful annuals to complete the look. Keep the bulbs

damp but not wet over winter. In spring you will have an amazing display to greet your visitors or brighten up a corner of the garden.

Let's not forget the vegetable garden at this time of year. Once the first few frosts have been then it is pumpkin harvest time. Pumpkins have better flavour and keep well after frosts. Preferably store pumpkins in a cool, dry place on pallets so as there is good air flow between them. Protect appropriately from rodents.

The Walcha Garden Club Community Day is being held on Friday, 1st May, at the Walcha Health Service commencing 9am. Members are asked to bring their own pruning equipment. Morning tea will be provided. For catering purposes please advise S.Law 0467 450 243 or D.Lisle 0429 799 083. New helpers are most welcome.

Lament: I pinched, pruned, planted, mulched, manured and mowed, dug, dressed, divided, harvested and hoed, thinned, trimmed, transplanted, sprayed, sowed and staked, wheeled, watered, weeded, tilled and raked, loosened, limed, and layered, gardened by the book, but one thing I neglected - I forgot to look!! - Bonita Laettner



Design the life you want and let us take care of the rest.



Wealth Architects Tamworth has been supporting clients across Tamworth and Walcha for the past 18 months under Paul Macfarlane, Principal and seasoned financial planner.

We're now pleased to welcome Andrew Beer to the team. Andrew brings a wealth of experience to the team, with deep expertise in financial planning, and long-term client care.

To discuss your financial, retirement, or investment goals, get in touch with our office to arrange a chat with Paul or Andrew.

Tamworth
22 – 24 Bourke St Tamworth 2340

Walcha
12 Derby St Walcha 2354

P: 6768 4560

Wealth Architects Tamworth is a Corporate Authorised Representative (001247176) of Insight Investment Services Pty Ltd, AFSL 309 996.

A.J WARK CONTRACTING



**FULLY INSURED
COMPETITIVE RATES**

Reliable service available for a range of property maintenance work, including:
Timber clearing/stacking, dam cleaning and maintenance, driveway & stockyard regravelling.



- ✓ 21T Excavator with stick rake, log grab & bucket
- ✓ Bobcat with stick rake & bucket
- ✓ Tipper Truck

**Contact ANDREW WARK:
0427 040 832**



Kindergarten Orientation

Friday 5 June 2026
9:15 – 11am

Walcha Central School invites parents and children beginning Kindergarten in 2027 to our Kindergarten orientation and classroom experience.

Meet in the school library
Morning tea provided.

Phone 6777 2777
154e North Street
RSVP by 1 June

a journey of learning from K to 12

what's the goss

with AJ Cross

A memorial service to celebrate the life of Former Walcha resident John 'Jive' Schaefer will be held at the Walcha Sports Club on Anzac Day from 1.00pm to be farewelled by 'Jive's Final Run' led by the Oxley Riders. May John McCrae Schaefer Rest in Peace.

Veteran Cross Country athletics coach Kevin Creighton, who commenced giving kids running tips over a quarter of a century ago, will be kicking off his latest sessions this Sunday at the Golf Club from 3.45pm for a 4.00pm start. An open invitation to all interested participants where K.C. hopes to not only run competitors through their paces but to also advise parents on what each individual needs to do while training by themselves. Sessions each Sunday are estimated to last for 30 to 40 minutes Free of Charge. Hopefully K.C. will get plenty of numbers.

Newie 2.I.C. and Bar Manager Megan Tisdell along with her assistant Audi Dunn ran a very successful Trivia Night last Tuesday which attracted no less than 11 teams. Le Cross and Co consisting of Troy and Jake LeStrande, Ben and A.J. Cross, Rebecca Taiki, Mitchell Foster and Kirsty Brennan snuck home by just half a point (44) from Newie Rednecks - Rach and Bernie McMaugh, Jack Nielsen, Ellie Clarke, Andrew Kelly, Katlyn and Josh Gollan (43^{1/2}), Betts Transport were 3rd on 42^{1/2} followed by 14 North, And Answers Pending 41^{1/2}, Save Ferris Trivia 40^{1/2}, Magnificent 6, Sparkles, The Paddlers, Risky Quizness and Newbies, A good night out especially for a Tuesday.

What a great performance by Young Walcha horserider Phoebe Grills when she competed as a member of Zone 13 team at the NSW Pony Club Championships at Gresford last weekend. Phoebe was named NSW Under 11 Sporting Champion after winning the Bonfield Bounce, Barrel, Bending and Flag Races along with Sporting Figure of 8 while riding homebred horse *Grills Traveller*. Way to go Phoebe.

Heard a whisper that Hill Street resident, Rabbitohs tragic, Roos and Rams legend John 'Goodooga' Walker was trouble with his radio a while back to the point where his son David was about to purchase him a new one. When 'Scrawny' checked with his mother about what brand to get Brenda told him not to worry about it as his father had put new batteries in the old one and it was going as 'Good as Gold'.

To suggest my sister in law Sandra Laurie wasn't a happy little camper last Saturday would be grossly understating the fact. When Sandy discovered their 'Quiet Valley' mailbox had been stolen she was really disappointed the letter collector had been removed simply because it was built by her father Ken and held sentimental value for her.

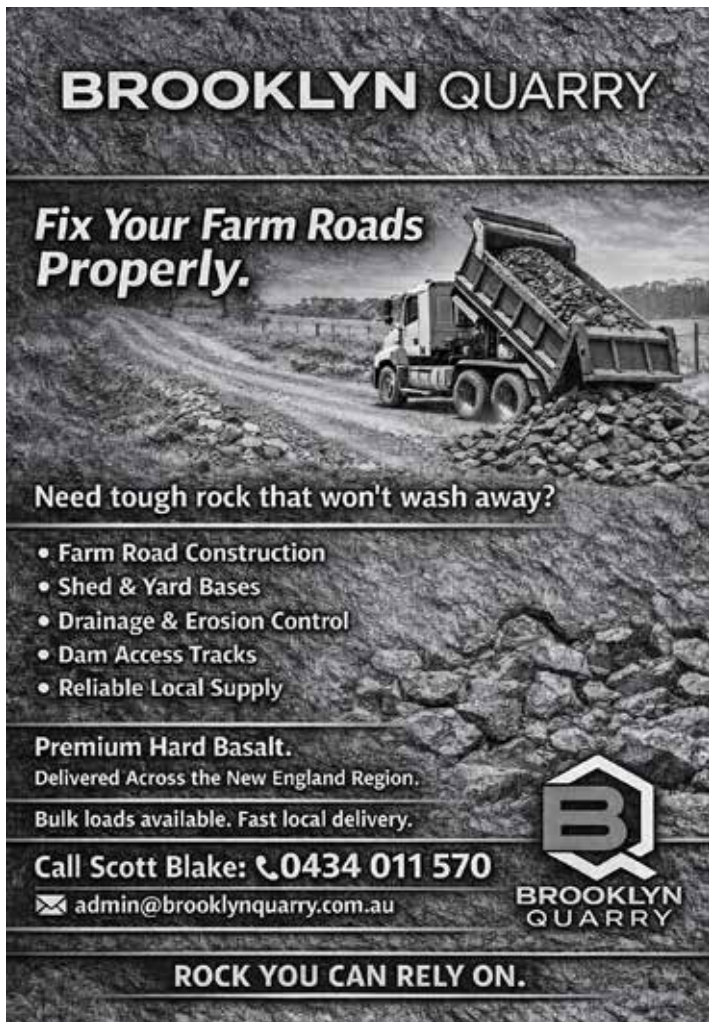
Another local who wasn't a happy little camper was Michael 'Red' Hoy who discovered 20 craybobs he had in a holding net in a pond on the western side of town had mysteriously gone missing last week. Nothing worse than Craybob Wranglers Michael.

Last week Walcha Hospital Auxiliary were on BBQ duties when 'Ben Nevis' held their Female Sale where Pamela Cairo Clare was one of their members helping out. Leading up to the 'animal auction' Pam informed her sister Christine Hamel she was heading to a Female Bull Sale before Chris suggested that wasn't going to happen for obvious reasons.

Well done to the Walcha Rams 1st Grade team that opened their 2026 New England Rugby campaign last Saturday at Peter Fenwicke Oval with a 40-35 win over Albies. Bad luck to the Reggies who went down 52-32. Defence mustn't have been a big priority - 159 points in two games. Best of luck to the Rams when they head to Tamworth on Anzac Day.

Big Wigs of the Week - Vet Supplies - Cameron Barton; Newie - Buck Byrne, D.G. Clare, Jagger Jamieson; B.C - Lyn Levingston, Neil Dunn, D.G. Clare (all 14); TBW Cafe - Lisa Swanton, Miles Lawrence; Apsley - Mick O'Reilly, Ben Partridge, Steven Avey, Hook Cross, Niraj Sarmah (all 12).

Tune into the Walcha Sports Report on 2AD Sin Bin this Saturday on 1134 AM after the 8.00am news. The Walcha Report is usually on each fortnight.



BROOKLYN QUARRY

Fix Your Farm Roads Properly.

Need tough rock that won't wash away?

- Farm Road Construction
- Shed & Yard Bases
- Drainage & Erosion Control
- Dam Access Tracks
- Reliable Local Supply

Premium Hard Basalt.
Delivered Across the New England Region.

Bulk loads available. Fast local delivery.

Call Scott Blake: ☎ 0434 011 570
✉ admin@brooklynquarry.com.au

BROOKLYN QUARRY

ROCK YOU CAN RELY ON.



Wednesday Golf

Last Wednesday was the first round of our Championships, playing for Drew's Seafood trophy. It was great to see so many starters and the scores were extremely impressive. Our winner was Donna Martin with 65 points, counting out both Katie Smith and Anne Martin also with 65. Next sweepstakes went to Pip Monie, 67, Jill Burnell, 67 and Penny King on 69. A few reductions in handicaps there. NTP on Hole 3 went to Julie Hoad and Jenny Lisle claimed the second shot on Hole 18.

On Saturday we played the second round of the Championships. It was a stroke round with putting and the monthly mug. The trophy was supplied by the Gallery of Art. Katie Smith, with 63 points was our winner, counting out Lorraine Walshe also with 63 points. Great work girls. Sweepstakes went to Bec Hall 65, Polly Locke 66, and Cark Street also on 66. Polly Locke won the putting with 26 putts. Lorraine Walshe took nearest the pin on Hole 3 and Donna Martin on Hole 16.

Our final round of the Championships is on today with a trophy donated by Paperdolls.

At the Nineteenth

The monthly Stroke Medal Round played last Sunday for a trophy donated by Angus 'Fatty' Crawford attracted a field of 31 including Will Nicholls who was the overall winner and also took out the A Grade division with 63 nett on the back of the best scratch score on the day, a five over par 75 off the beater.

B Grade went to Don Brooks after he carded a 66 nett whereas Julie Presnell registered 65 nett to win C Grade.

Long drives sponsored by Tony 'Backhand Larry' Asmus were caressed by club champion Michael Stackman (A), James Norton (B) and Alex Gill (C). Sweepstakes to President Miles Archdale 67, Mata Matapakia 68, Alex Gill 68, John McCormack 69, Jenny Lisle 70 and Jock McLaren 70. In Match Play Miles Archdale defeated Nixon Bird 4 and 3, Will Nicholls rounded up Dion Bird 6 and 5, Jock McLaren downed James Norton 3 and 2. Sharpest shooters at the pins were Alex Gill (3), Mark Hogan (9) and Will Archdale (18) while no player was clever enough to reach the beach on the 16th.

The putting competition was won by Don Brooks after he engaged his flat stick on 23 occasions whereas the coveted 'Pink Shirt' for most putts went to South African visitor and John McCormack's mate Nico du Plessis with 35 jobs.

No Saturday 9 hole competition due to the second round of the ladies championships which will be finalised today. Best of luck to all competitors.

This Sunday is a 4BBB BAM Owen and Julie Presnell are in charge of supplying the prizes to be played under a format of holes 1 to 6 - Best Ball. Holes 7 to 12 - Aggregate Holes 13 to 18 - Multiplier.

Ladies Bowls

Janice Rizzi and Lee McCoy played a friendly game of 3 bowl pairs against Esther Hunt and Deb Richards. Numbers were down this week due to the commencement of the Flu Clinic.

Don't forget WLBC are hosting a FREE beginner's day on Thursday 30 April from 9am. There will be a registered coach who will present an introductory overview about lawn bowls followed by a morning tea, before we all head out to the green for a session where our local lady bowlers, as well as the coach will assist everyone in having-a-go at lawn bowls. This will then be followed by a light lunch.

All equipment is supplied. We just ask participants to wear flat soled shoes, thongs or play bare footed.

Basketball

The Walcha basketball season is not far away. At the AGM the executive committee remained unchanged with President - Kim Lisle, Secretary - Amanda Scott and Treasurer - Jenny Hoy.

The competition will start on Monday 4th May, nominations close on 25th April. Subs are \$50 for school students and \$60 for everyone else. Men also need to pay a \$10 deposit for the use of an association singlet.

At this stage matches will be played Mondays and Wednesdays, this is dependent on the number of nominations. If only one night is required it would be Monday nights.

Both team and individual nominations are being taken for the women's competition. Ladies if you would like to play but don't have a team, nominate and we will do our best to get you into a team.

Men nominate individually and are put into teams by the committee. This is done to keep the teams as even as possible. If there is couple of players who really want to play in the same team put a request in when you nominate.

The only thing the committee asks is if you nominate that you commit to the whole season. It is very disappointing when a team doesn't field enough players, neither team enjoy the game.

Nominations to Amanda Scott 0488 226 722, Jenny Hoy on 0427 367 711 or on the Walcha Basketball Facebook page.

Bowls

Thursday results: Noel Goodwin, Stephen Goodwin & Tony Batterham defeated Barry Hoad, Matt Andrews & Peter Hayes 13 to 7. Brian Goodwin, Adam Hall & Nico were too good for Barry Kliendienst, Nick & John McCormack 15 to 9.

The A grade singles results: Kyle Goodwin defeated Barry Kliendienst 31/11; Brian Goodwin defeated Noel Dunn 31/6 this was a better game than the score indicated. Noel Goodwin and Jamie Kerr had a good tussle with Noel finally winning 31 to 24.

There was a mistake with last week's triples results it should have been as follows. Noel & Brian Goodwin along with Dacian Andrews defeated John Byrne, Buck Byrne & Scott Withers 19/9. Fred Cameron, Mat Hamel & Garth Clare were too solid for Tony Asmus Jason Asmus & Adam Hall 18/10. I have spoken to myself about the person responsible. Sorry about that.

Nominations for the John Oxley Carnival are on the board - Triples & Pairs on the 6th & 7th of June.

Bendemeer Art Show
Colours of Autumn

Show Days
Thurs 30 April - Sun 3 May 2026
10 am - 4 pm daily
Entry: \$15 (Kids free)
Bendemeer Town Hall

Opening Night
Friday 1 May, 6 pm
Entry fee: \$30
(Bookings essential)

For more information visit:
<https://bendemeerartshow.org/>

TAMWORTH REGION | CAPITAL OF COUNTRY

Support your local business

telecottage
WALCHA

Need a sale catalogue designed & printed?

Contact us for all your printing & design needs.

wtc@walchateleccottage.com.au | 6777 1111



In Memoriam

Wayne Stephen Partridge
10.7.55 - 27.4.16

Though his smile is gone forever
And his hand we cannot touch
We still have all our memories
Of the one we loved so much
His memory is our keepsake
With which will never part
God has him in his keeping
We have him in our heart.

Susie, Lindsay and Becco, Dallas and
Maddy, Adam and Ally, Tanya, Lee and
Families.

Public Notice (cont)

Walcha Home Furnishing
Now Open
Buying and Selling
Quality Furniture
PH: Dave 0427 771 469

For Sale

SO HOT FIREWOOD - Keep warm this season. Premium well seasoned hardwood. Locally owned and operated supporting our rural community. Call now to place your order 0428 370 356.

Layer pullets, all breeds, 20 weeks. Delivered Friday 24/04/2026, Phone Jim 0428 194 105.

Public Notices

DR GENEVIEVE FREER

Phone 6777 2068 | 0429 668 583

Walcha Law – 02 6777 2066
Bree Curtis – Justice of the Peace
Available by appointment only.
No charge for JP services.

Winter Squash comp starting Tues 28 April.
New players welcome. Names to James
Norton 0427 049 378.

Stace's Fast Freight will not be running on
ANZAC Day. (Saturday 25th April). Walcha
deliveries recommence Wed 29th April.

Basketball comp nominations are now
being taken. See sports write up on Page 11
for all the details.

Position Vacant

Qualified Motor Mechanic – Full Time
Mountain Motors are seeking a qualified
motor mechanic to join our busy workshop.
Duties include servicing, diagnostics, and
general mechanical repairs.
Trade qualification and driver's licence
required. For further information, please
contact the office on 02 6777 2542 or send
resume to admin@mountainmotors.com.au

Raffle Results

Sorry this was missed in a earlier version
of the Apsley Advocate. WRHS Walcha
Volunteer Support Group 20.03.26. 1st
Timothy John and 2nd Larissa Wall. Thank
you for your continued support. Olive
Chandler.

Friends of Riverview. 1st Jane McLaren,
2nd Peter Mclvor and 3rd Kathy Canten.
Thank you for your support. Olive.

Meeting Notice

Walcha Support Group Thursday 30th April
1.30pm WCCC Room Middle St. Relaxation
12.30pm, BYO Lunch 1pm, Meeting 1.30pm.
All Welcome.

Walcha Garden Club Community Day
Friday, 1st May, at the Walcha Health
Service, commencing 9am. Please bring your
own gardening equipment. Morning tea will
be provided. For catering purposes please
advise S.Law 0467 450 243 or D.Lisle 0429
799 083 of your attendance. New helpers are
most welcome.

Wanted

Wanted to buy empty 1000L shuttles. Phone
Brett 0428 771 213.

thumbs



- 👍 To Dr Deng and team for a wonderful flu clinic last week, keeping Walcha healthy.
- 👍 To Bill at the recycle centre for his customer service and friendly nature, a credit to the Council and town.
- 👍 To the team at Walcha Tourism who do a fabulous job promoting our town and region.
- 👍 To Meg for efficiently helping me with my transport needs.
- 👍 To Tom for the group exercise.
- 👍 To Walcha Council for repainting the white lines in parking areas. Much appreciated by us drivers.
- 👍 To Melanie Oppenheimer for her awesome presentation on "Two Grandfathers at War" as guest speaker of Walcha Sports Club Autumn Lunch.
- 👍 To Walcha Historical Society volunteers for manning the street stall on Saturday and helping raise funds for the Craft Shop Cover-Up project.
- 👍 To Nigel and the New England family support service and the band Four Book Trilogy for hosting a wonderful free BBQ and music night last Saturday at Woolbrook Hall. Great night had by all.
- 👍 To Larissa from Riverview - you have been such a great asset to Riverview for over a decade. Thank you for all you have done for residents, families and staff. Best wishes for the future.

Contributions will be received in person, by phone or email and must be accompanied by your name and contact details. They will be printed at the discretion of the editor.

Bendemeer Art Show
Colours of Autumn
TAMWORTH REGION

NEST

Discover More Art While You're Here!
Visiting for the Bendemeer Art Show from **April 30 to May 3?**
Take the time to explore the breathtaking sculptures of the **New England Sculpture Track (NEST)**
Make it a full art experience — gallery to landscape.

FOR MORE INFORMATION VISIT
[HTTPS://BENDEMEERARTSHOW.ORG/](https://bendemeerartshow.org/)



LUX ELECTRICAL

LEE HARRISON
 ☎ 0448 840 461
 ✉ leeharrisonelectrical@gmail.com

LICENCE NO. 480795C
 CCTV | SECURITY SYSTEMS | RE-WIRES | LIGHTING & POWER | SAFETY
 SWITCH UPGRADES | RENOVATIONS | INSTALLATIONS & MAINTENANCE
 | FULLY LICENCED & INSURED

Nick Moore PLUMBING & EXCAVATION SERVICES

WALCHA & SURROUNDING AREAS



Highly qualified and experienced plumber
 All aspects of Plumbing and Gas Fitting
 Wood heater installation
 Roofing and Guttering
 Gold License No 59555C

Nick 0418 691 306
 nickmoore203@yahoo.com.au
 Katy 0422 034 660

WALCHA LAW

- PROPERTY • ESTATES • WILLS
- POWER OF ATTORNEY & ENDURING GUARDIAN DRAFTING
- FAMILY LAW & MEDIATION

Sophie Thomson
 Director/Solicitor

James Levingston
 Consultant/Solicitor

6777 2066
 info@walchalaw.com.au

– Local lawyers for over 76 years –
Incorporating Patterson Byfield and Bryen

New England IT ONSITE COMPUTER SERVICE + SALES

Tim Sutton 0414 874 523

CHIROPRACTOR

Samantha Goor
 B.Sc. Anatomy (NSW) M Chiroprac (Macq)
 Tuesday & Friday from 9.00am
6777 1340

A G W RURAL CONTRACTING

GPS Equipped boom spraying
Andrew Wauch 0427 549 748

Andrew: 0427 549 748
Toni: 0421 972 354

AQF3 ARBORIST

Tree lopping & removal
 Truck
 Bobcat
 Post hole digger
 Trencher
 Woolshed Cleaning

Scott Kermode
0427 100 889

treetopservices@bigpond.com

MOBILE-FIX AUTO+AIR

Mobile Repairer & Airconditioning Specialist
Licensed Vehicle Repairer
 LIC No. 46696 RPL Lic No. 422616

PATRICK STACE – WALCHA
 Mob. 0428 780 077 Ph. 6778 0595

CA & TL GOODWIN CONTRACTING SERVICES

We specialise in:

- Rural fencing
- Stock work
- Machinery operation
- Fully insured with competitive rates
- Servicing the New England and surrounding areas

Call Craig: 0428 780 150 or Tracy: 0428 422 860

ADVERTISE YOUR BUSINESS ON THIS TRADE & PROFESSIONS PAGE

Small Trade Ad \$30 • Large \$40

DISCLAIMER LETTERS TO THE EDITOR are submitted on the condition that The Walcha Telecottage as the publisher of The Apsley Advocate may edit and has the right to, and license third parties to reproduce in electronic form and communicate these letters. They are published at the discretion of the Editor and Board. The Apsley Advocate is printed by The Walcha Telecottage, PO Box 116 Walcha NSW 2354. Phone 6777 1111 Fax 6777 1112. The Walcha Technology Co Operative Limited, the Editor and Staff of this Newspaper have published any article here-in in good faith and bear no responsibility in respect to the accuracy of the information contained in such article. Any person or persons publishing material in this Newspaper do so in the knowledge that they shall personally accept any responsibility for the accuracy and other correctness of such articles and also accept full responsibility for the legal consequences if it be found that the article contains any inaccuracies in the contents of any such articles.

DEADLINE MONDAY 4.30PM Editor: Anthea Nivison. News: Susie Crawford. Advertising/Sport: Joscisca Matapakia and Kate Connors.

church notices

ANGLICAN
April 26 - Family Service 9.30am
 Anglican Church
 Phone 6777 2543
 or email: walchaanglican@gmail.com

PRESBYTERIAN
 Walcha: every Sunday 9:30am
Youth Group every Saturday 5pm - 7pm, during term.
 We'd love for you to join us.
 All welcome.
 Phone 6777 2539.

CATHOLIC
Sunday Mass 10.00am



Marchant

BROS. PTY. LTD. Est. 2000



BULK WATER DELIVERY AVAILABLE

A FULL RANGE OF AFFORDABLE TRANSPORT & EARTHMOVING

Dam construction/maintenance, stick raking, gravel available, road building, site prep, pipe laying and all timber work. Check out our website for the full range of machinery, attachments and services available.

Earthmoving and Heavy Haulage Transport
Jason 0427 490 487 • Jamie 0429 771 351

02 6777 2024 marchantbros@bigpond.com
 www.marchantbros.com.au

WALCHA BOWLING & RECREATION CLUB

"Let the good times roll"

MEMBERS DRAW

FRIDAY **\$350** SATURDAY **\$400**

YOU MUST BE A MEMBER FOR 2025/2026 TO BE ELIGIBLE TO WIN

WHAT'S ON?

Thursday 23 12.00pm – Close

BOWLS 9.00am Ladies, 1pm Social

Friday 24 2.00pm – Close

BISTRO

- Sausage & Mash Pot Pies
 - Cheesy Chilli Prawns with Fried Rice
 - Honey Butter Chicken
 - Home deliveries • Town limits only
- FOR CATERING NEEDS CALL:**
 Dianna – 0412 536 760 or 5722 6003

Saturday 25 11.00am – Close

5.00PM BISTRO

Sunday 26 11.00am – Close

12.00PM BISTRO

Raffle tickets from 12pm, drawn 1pm.

Friday Bingo

has now moved to
 12.30pm on Thursday
 Come and have a go!

Saturday 25th April

The club will be open for
 bacon & egg rolls after the
 Dawn Service. Then again for
 lunch after the 11am Service
 and march. 2up will start
 around 2pm

DO YOU LIVE IN WALCHA SHIRE?

If so you MUST be a member
 to enter the Club Social
**Membership \$15. Full
 Membership \$120. PHONE
 6777 2077**



OK EARTHMOVING

SPECIALISING IN ROAD CONSTRUCTION & MAINTENANCE

- Bulldozers
- Excavator 2t - 30t
- Truck and Dogs
- Gravel supply
- Graders
- Rollers
- Skid steers + multiple attachments
- Forestry mulching
- Land development
- Large Dam construction

Peter O'Keefe : 0429 944 821

Will O'Keefe : 0488 925 845



Proudly servicing Walcha and surrounding districts for over 30 years



Wayne Hoy: 0427 281 060
 Matthew Hoy: 0427 322 640
 Aaron Bullen: 0409 776 340

SPRAYING EXCAVATING EARTHMOVING

GPS & Auto Steer Equipped

Remote Aerial Spraying & Spreading
 4x4 Truck & Boomspray, Quikspray Trailers
 4x4 Tractors & Casotti's

