

# THE APSLEY Advocate

CIRCULATION 1920 – P 02 6777 1111 F 02 6777 1112 wtc@walchatelecottage.com.au walchatelecottage.com.au

8 July 2026



## MICHAEL McHUGH BA LLB (Hons)

Acc. Specialist - Property Law  
Australian Legal Practitioner

Property Law & Conveyancing  
Company & Business Law  
Dispute Resolution  
Succession Planning  
Wills and Estate

17/429 Peel Street, Tamworth

## WALCHA By Appointment

6768 0888  
0418 658 217

mmchugh@lawexchange.com.au  
www.lawexchange.com.au

telecottage  
WALCHA

## Need a sale catalogue designed & printed?

Support your local business



Contact us today

6777 1111  
wtc@walchatelecottage.com.au

## Austin Scrivener named NSW Tree Feller of the Year

Walcha's Austin Scrivener has added another major achievement to an already remarkable year, being named the 2026 NSW Axemen's Association Tree Feller of the Year at the inaugural NSWAA Awards Night, held at Rydges Resort Hunter Valley on Saturday, 4 July.

The award recognises Austin's outstanding performances throughout the season and is considered one of the highest individual honours within the NSW Axemen's Association.

It has been a standout year for Austin, who has consistently proven himself against the best competitors in Australia and overseas.

Earlier this year, Austin was named the Most Successful Tree Feller at the Sydney Royal Easter Show after an exceptional week of competition. That success was followed by one of the biggest milestones of his career when he qualified for the 2026 World Championship Tree Felling Final.

Competing at Charles Moses Stadium at the Sydney Showground, Sydney Olympic Park, Austin lined up against some of the world's best axemen in what is regarded as one of the sport's biggest stages. Qualifying for the World Championship Final had been a long-held goal and was a reward for years of dedication, training and hard work.

Unfortunately, Austin was unable to attend the NSWAA Awards Night to accept his latest honour in person, as he is currently travelling and competing throughout North America. His brother, Mitchell, proudly accepted the award on his behalf.

Austin's impressive form has continued overseas, with strong performances across several competitions. Most recently, he claimed victory in the Springboard Tree Felling event in Quebec, Canada, on Sunday, adding another international title to his list of achievements.

Austin is expected to return home this weekend before quickly turning his attention to his next

event, the Royal Queensland Show, better known as the Ekka, in Brisbane early next month.

He will once again compete alongside his brother Mitchell, as the pair continue to represent Walcha and Australia at the highest level of the sport.

With plenty more major competitions still ahead, Austin's year is showing no signs of slowing down.



Photo: Head First Photos

## VIPER™ POUR-ON TWICE THE KILLING POWER AGAINST SHEEP LICE

- Highly potent, second generation neonicotinoid chemistry
- 4 weeks protection when applied within 24 hours of shearing
- Flexible off-shears application - up to 7 days
- 6 months off shears lice free guarantee



WVS  
WALCHA VETERINARY SUPPLIES

6 Aberaldie Road Walcha. Phone 6777 2588 • www.wvs.com.au

**OXLEY GROUP**  
**HEAVY EQUIPMENT HIRE**

**CURRENT EQUIPMENT READY FOR HIRE**  
D6T Dozer, 45t Excavator, 40t Dump Truck  
OHIO QUARRY OPENING SEPTEMBER 2026

SKID STEER LOADER rear grade, stick raise, loader, wheel driver	40t ARTICULATED DUMP TRUCK	D6T XL DOZER stick raise and pipelaying	31-45t EXCAVATORS grabs, 99 bucket GPS, augers	TRACTORS 27t matching loader, mulcher, pipelaying	TIPPER and WATER CART
--	----------------------------	--	---	--	-----------------------

**OUR EXPERTISE**

- Civil Infrastructure
- Bridges
- Quarries, Crushing & Gravel
- Dam Construction
- Airstrips
- Bulk Earthworks
- Shed Pads & Construction
- Trenching & Pipelaying
- Bush Fire Mitigation
- Mulching & Heavy Slashing
- Stormwater
- GPS, Laser, Survey & Drone Services

CALL NOW ON 0403 726 780

www.oxleycivil.com.au  
info@oxleycivil.com.au

## around the traps



By DAN COULTHURST

Winter has well and truly settled across New England, with a run of frosty mornings reminding us that July has arrived. While the cold has slowed pasture growth, most producers around the Walcha district remain in a much stronger position than earlier this year with reasonable late autumn rainfall. Feed reserves are generally holding up well, and livestock are carrying good condition heading into the coldest part of the year. The challenge now is making sensible decisions around stocking rates and supplementary feeding to ensure paddocks are not overgrazed before spring arrives. There continues to be noticeable confidence throughout the district, with many producers looking to retain quality breeding stock rather than selling into the current strong market. The question amongst traders is whether to purchase additional trade units now and compete with high restocker demand or sit and wait to see if the heat comes off. My thoughts would be to hedge your bets. As we continue to see rain through New England and better rain out west, restocker demand is going to remain firm for the foreseeable future.

One of the biggest talking points remains the sheep and lamb market. Tight supplies continue to underpin exceptional prices across eastern Australia, with processors competing strongly for well-finished lambs and quality mutton. Export demand remains robust despite ongoing uncertainty in global markets, and Australian lamb continues to command premium prices. Restocker demand has also remained resilient, reflecting confidence that seasonal conditions will continue to support production through 2026. Merino, first cross and composite breeders are all attracting keen competition with \$7.50 per kg liveweight or better the norm with an isolated sale last week of \$10.42 for SIL Primeline ewe lambs equating to \$575 per head. Lambs are not to be forgotten with barely anything available for under \$220 per head with a smaller line of mixed sex suckers in the south making \$9.30 per kg liveweight. I'm not sure who's doing the sums on these lambs given the current slaughter rates, however, as producers, it is certainly promising signs for times ahead.

While sheep markets continue to dominate conversation, the cattle industry is also continuing to show encouraging signs. Feeder cattle remain highly sought after, supported by both domestic feedlots and northern buyers. The Ekka RNA Show Sale in Dalby last week saw Angus feeder steers making out to \$6.50 with quality cross bred steers pushing through \$6 per kg. Strong processor competition for finished cattle is maintaining confidence throughout the supply chain, while quality backgrounding cattle continue to sell well whenever they become available. Seasonal conditions across much of northern New South Wales are considerably good for this time of year despite a dry "growing" season, allowing producers to market cattle in excellent conditions. As always at this time of year, animal health remains a priority, with producers encouraged to monitor body condition, mineral requirements and water supplies as winter progresses. Good management during these colder months will pay dividends once spring growth begins.

Monday's Tamworth prime sale reflected the continued strength in the market. A yarding of approximately 1,295 cattle saw all major buying groups operating in a competitive market. Prime yearling cattle improved by around 15 cents, selling between 514 and 520 cents/kg, while feeder steers ranged from 580 to 626 cents/kg. Restocker competition remained solid, with light steers reaching 646 cents/kg and averaging around 615 cents/kg. Better quality light heifers also improved, making from 518 to 575 cents/kg. Heavy cows eased slightly, while lighter manufacturing cows experienced stronger competition. Overall, the market remains very positive, with demand continuing to outweigh supply for quality cattle. The sheep and lamb market also maintained its firm tone, with well-finished trade and heavy lambs attracting strong processor support and quality mutton remaining in demand. As winter numbers traditionally begin to tighten, current indications suggest livestock markets should remain well supported over the coming weeks.



## WALCHA LAW

- PROPERTY • ESTATES • WILLS
- POWER OF ATTORNEY & ENDURING GUARDIAN DRAFTING
- FAMILY LAW & MEDIATION

**Sophie Thomson**

Director/Solicitor

**James Levingston**

Consultant/Solicitor

6777 2066

info@walchalaw.com.au

– Local lawyers for over 76 years –  
Incorporating Patterson Byfield and Bryen

# Northern NSW Central Schools Touch Football Championships

Walcha Central School conquered the Northern NSW Central Schools region at the Touch Football Championships held in Inverell. The Open Boys and Girls competitions were contested on Tuesday 16 June, with the Under 16 Boys and Girls taking the field on Wednesday 17 June.

Across the two days, Walcha's students displayed outstanding skill, determination and sportsmanship, competing with great pride and representing the school exceptionally well both on and off the field. The respect shown towards officials, opposition teams and one another was a credit to everyone involved.

The results were outstanding, with three of Walcha's four teams qualifying for the Central Schools State Finals, to be held in mid September.

The Open Boys were dominant throughout the day, winning all four of their pool matches to finish undefeated and secure qualification for the State Finals. They scored an impressive 35 tries while conceding just six.

The Under 16 Boys were equally impressive, going through the carnival undefeated. They topped their pool before recording a convincing victory in the play offs, they scored 38 tries while conceding just one, an outstanding defensive effort that highlights their teamwork, discipline and commitment.

The Under 16 Girls also enjoyed an excellent carnival. After finishing second in their pool, they defeated Uralla 3-0 in the play-offs to secure their place at the State Finals.

Although the Open Girls narrowly missed qualification, they showed tremendous resilience and determination throughout the day, competing strongly against quality opposition and never giving up.



*Above: U16 girls Bree Smolders, Arley Olsen, Matisse Pascoe, Xaphyn Petuha, Veja-Lee Petuha, Isabelle Saxby, Emily Zorgrader, Madison Morris, Rachelle Beckhaus and Almaz Evans*

*Right: U16's Flynn O'Connell, Brax Kemp, Lachie Provost, Tyler Ross, Nathan Ross, Jack Wall, Hunter Linton, Kobie Brown, Cameron Mooney and Nate Bloomfield.*



Congratulations to all students on their outstanding performances and the way they represented Walcha Central School. A sincere thank you is extended to Mr Ussher and Mrs Provost for generously giving their time to coach the teams and support our students throughout the carnival. Their commitment and encouragement were instrumental in our success.

We wish our three qualifying teams all the very best as they prepare to represent Northern NSW at the Central Schools State Finals in Dubbo.



## Stock and Property Watch

[www.nutrienharcourts.com.au](http://www.nutrienharcourts.com.au)

### Family home with additional block of land

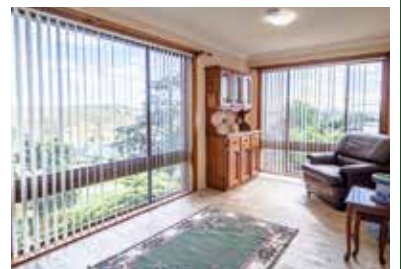


**Peta Carter 0407 350 781**

- 1363 sqm block
- 3 generous sized bedrooms
- Well appointed three-way bathroom with separate toilet
- The kitchen has great storage space
- Natural light throughout the whole house
- Great sized backyard
- Single garage with storage options for tools and outdoor equipment
- Home is a short distance from local schools, parks, shops, and amenities



**\$560,000**



Nutrien Boulton's Walcha ■ 3n Derby Street Walcha ■ 6777 2044

# WALCHA WINTERFEST

~ A WEEKEND OF WINTER FUN

**Twilight @ Winterfest**  
Saturday 11<sup>th</sup> July, 2pm - 7pm  
McHattan Park  
music, food, activities & winter warmth

**Winter in Walcha markets**  
Sunday 12<sup>th</sup> July, 9am - 1pm  
McHattan Park  
local, handmade and artisan stalls

**Sunday Welcomes @ Walcha**  
Sunday 12<sup>th</sup> July, 10am - 2pm  
Fitzroy and Derby Sts  
shop, indulge and explore Walcha on Sunday

Come for a day, stay for the weekend.  
Book your accommodation at Walcha Motel, Walcha Caravan Park or one of our BnBs.  
Event details at [Facebook.com/Walchabusinessgroup](https://www.facebook.com/Walchabusinessgroup)  
Accommodation details [walchansw.com.au/where-to-stay](http://walchansw.com.au/where-to-stay)

# letters to the editor

## State of Origin

The rugby league world has changed many times over the past 70 years but the rivalry between New South Wales and Queensland has not. In the good old days the better players from Queensland and country New South Wales came to live and test their skills in Sydney with the result that Sydney almost always won the annual City-Country contest and NSW almost always defeated Queensland.

In those days the game was "residential" based – if you lived in Redfern you played for South Sydney and if you lived in NSW you played for NSW. Queenslanders constantly cried foul when their best players lined up to play for NSW because that was where they now lived. The remedy of State of Origin football has now been in use for many years.

The game was always professional and players could accept payments and prizes but still needed to have a full time job to make ends meet. Many an employer did not want their employees to play football on Saturday and then turn up for work on Monday with a black eye, an arm in a sling or with other injuries.

**Bob Walsh**

## Transmission Line Petition 'Debated'

A large group of around 300 landholders impacted by High Voltage (HV) transmission lines and supporters from many other regional areas travelled to Sydney on 25th June to the NSW Parliament in Macquarie Street Sydney after the petition raised by the Walcha High Country Guardians (WHCG) recently received in excess of 22,000 signatures, triggering a Parliamentary debate.

The petition was asking the government to pause the planned high voltage power lines being imposed on landholders between Bayswater and Walcha traversing through landscapes ranging from pristine old native forests to high value open grazing native flora and fauna habitats and prime agricultural land. Since a new corridor for proposed HV transmission lines was announced last October, The Walcha High Country Guardians (WHCG) and other groups in the Hunter have been pushing back on the route for many reasons, most of which were identified by Energy Co in their own documentation as the reasons they would not use this route just two years prior. The groups of impacted landholders have been asking the government to pause and reassess this route before they spend an estimated \$20bn building what many consider will be a white elephant due to a lack of proposed generation projects to feed into these lines.

The WHCG were hoping the Labor Government would treat this debate seriously and actually use the opportunity to provide some cost analysis comparisons with alternate routes and explain how they arrived at this route. It was too much to ask for apparently, as the Government did not even show up! The only speakers in the so called 'debate' were from the Coalition, who spoke passionately about the impact these projects were having in rural communities and how we were being run over by the Minister (Ms Sharpe) and the rush to renewables. So much for this democracy we live in. We were completely ignored to the extent other members of the Parliament had never seen such disrespect paid to any group by the government of the day. A large contingent from impacted communities around NSW had filled the Parliamentary gallery and we did expect Premier Minns to, at the very least, show some respect to many of us who had taken time away from our businesses and farms to hear him speak to the issue.

I have to say, despite all the rhetoric and spin from government and their agencies saying otherwise, we have been ignored since day one, so we should not have been surprised. What we were surprised to hear before leaving Parliament (from Aiden Morrison) was that Minister Sharpe had written to the Australian Energy Market Operator (AEMO) on 12th May 2026 requesting this project be moved up from "Actionable" to the "Anticipated" level in planning of the grid. **Cont. over**

**45ft flat top • 45ft single deck cattle float • 26mtr B Double  
19mtr mini B Double • Low Loader available for hire**

# BRIAN Smith TIMBER TRANSPORT

**WALCHA  
02 67772126**

**Bonnie Smith 0429 772 077  
Brian Smith 0427 780 216**

Call us for  
your large  
Transport  
needs

# A Trip Down Memory Lane for Kerry Carey

It was a special trip down memory lane recently for Kerry Carey, who returned to the Walcha Bar & Grill to share two beautiful dance performances and reminisce about days gone by.

Kerry's performances brought back memories from 30 years ago, when the venue was known as the Ex Services Club and yearly dance festivals were a much-loved part of Walcha's entertainment calendar.

The occasion was enjoyed by members of the local Walcha Aged Care group, who gathered together for a lovely meal and enjoyed the afternoon's entertainment.

Staff Suman and John were kept busy preparing a delicious lunch for everyone, making it a wonderful day filled with memories, good food and community connection.



*Continued from page 4....*

And on the same day as the debate AEMO did just that in their 2026 Integrated System Plan. According to Aiden Morrison this means there will be no further cost analysis done and it is an effort by Minister Sharpe to hide the fact that the New England REZ is coming off the rails. It is just one more example of unprecedented interference in due process by Minister Sharpe which Cameron Greig recently highlighted on our page.

As an impacted landholder I am still waiting to be informed by Energy Co of this development. All along, they have had the attitude that if I don't like it they have the powers to simply compulsorily acquire the easement when they need to. This process is flawed and far from over from our perspective. We are an incredibly strong and resilient community and the WHCG will continue to work hard to highlight the spin, stop the Govt waste and environmental destruction this infrastructure will bring to our district.

We need your help: While the government continue to listen to energy salesmen/ speculators about possible projects around Walcha (in 2021 they were told there would be 10 projects in the Walcha district) we are working hard to prove the actual on the ground realities from landholders. We are producing a map indicating those who do not wish to host any renewable infrastructure on their farms by marking them in red. Many have already shared their answers, but if you haven't, please let us know if you would like your farm marked red on this map. We will be sharing this map to help highlight the real level of interest, with a view to demonstrating these ridiculously over specked dual 500KV transmission lines being forced upon us are not required in the NE REZ plan. You can email us at whcg.funding@gmail.com

**Bruce Rutherford**

**REAL ESTATE & LIVESTOCK**  
 pitt.son.walcha@bigpond.com  
 www.pittsons.com.au

*Pitt Son's*

**OFFICE 6777 2000**  
 Sam Payne 0428 667 404  
 Ron Vincent 0427 775 821

## Open Plan Living



- Three bedrooms, built ins to main
- Open plan, lounge, dining and kitchen
- Near new kitchen and bathroom
- Woodfire

- Ceiling fully insulated
- Reverse cycle air con
- Near new hot water system
- Well fenced

*Well Priced*

**\$470,000**

*Locally owned and operated*

The Census is coming this August.

# EVERY ANSWER MATTERS

Help us understand what Australia  
needs now and into the future.  
Census night - Tuesday 11 August

➔ [census.abs.gov.au](https://census.abs.gov.au)



**Census**

Authorised by the Australian Bureau of Statistics, Canberra

# APPRENTICESHIPS AVAILABLE

## Tamworth Council positions

Youth in Walcha who are interested in traineeships or apprenticeships are encouraged to apply for a range of opportunities which were launched this week through Tamworth Regional Council.

The annual program offers a unique opportunity to earn while you learn, gain hands-on experience, work towards a nationally recognised qualification and build a rewarding career in local government.

This year's intake includes opportunities across a diverse range of professions, including:

- **Trainee Business Support Officer – Infrastructure & Works**
- **Trainee Water Operator – South East Headworks**
- **Cadet – Building Certification**
- **Trainee Operator – AELEC**
- **Trainee Designer - Survey & Design**
- **Trainee Water Operator – Manilla/Barraba**
- **Apprentice – Electrical Technician**
- **Cadet – Asset Management**
- **Trainee Operator – Water Operations (Distribution)**

"Whether you're finishing school, looking for a career change or returning to the workforce, we have opportunities that combine practical experience with ongoing learning, mentoring and support," Tamworth Regional Council Chief People Officer Bec Cosgrove said.

To learn more or apply, visit [tamworth.nsw.gov.au/kickstart](http://tamworth.nsw.gov.au/kickstart). Applications opened on Monday 6 July and close Monday 3 August 2026.

## Applications open for Transgrid's 2027 Apprentice Program

Applications are now open for Transgrid's 2027 Apprentice Program, offering school leavers, career changers and regional jobseekers the opportunity to learn a trade while helping deliver Australia's transition to renewable energy.



The program follows Transgrid's largest apprentice intake to date, with 29 first-year apprentices joining this year. Women made up 45 per cent of the intake, taking on roles in substations, telecommunications and transmission lines across regional New South Wales.

Apprentices receive nationally recognised qualifications, hands-on experience maintaining and expanding Transgrid's high-voltage network, and the opportunity to work on major projects including EnergyConnect, HumeLink and the NSW section of VNI West.

Transgrid Executive General Manager of Delivery Jennifer Hughes said the program provides practical training, mentoring and career opportunities, while encouraging more women, First Nations people and regional residents to apply.

Positions are available in Newcastle, Orange, Tamworth, Wagga Wagga, Wallgrove and Yass.

For more information or to apply, visit [www.transgrid.com.au/careers/apprentice-program](http://www.transgrid.com.au/careers/apprentice-program)

## ROCKY RIVER via URALLA | NSW Davidson Cameron & Co. A NUTRIEN AG SOLUTIONS PARTNER



Land Size - 22.01 Ha\* | 54.4 Ac\*



### Tranquil Riverfront Lifestyle on 22.01 Hectares\*

Escape to your own private slice of country paradise with this picturesque 22.01ha (54.4 acre) property, ideally located just 4km from the heart of Uralla. Featuring a blend of open grazing country and scattered timber, the property boasts frontage to the beautiful Rocky River, complete with stunning waterholes that are home to platypus and yabbies, creating a truly unique natural environment. This section of Rocky River is also renowned for its quality gold fossicking being one of Uralla's long-standing attractions.

A substantial 17m x 7.5m lockable Colourbond shed provides excellent storage and workshop space, complete with two roller doors, windows, side entry access, and supported by 88,000-litres of freshwater storage.

Whether you're looking to establish a hobby farm, build your dream home - this lot has council approval, run a few animals/horses, or simply enjoy the privacy and peaceful surroundings, this versatile property offers endless possibilities.

**Price Range: \$520,000-\$550,000**

**Address:** 218 Rifle Range Road,  
ROCKY RIVER via  
URALLA NSW 2358

**Contact:** Andrew Blomfield  
0428 667 402  
[ablomfield@dcco.com.au](mailto:ablomfield@dcco.com.au)



**Davidson Cameron & Co.**

A NUTRIEN AG SOLUTIONS PARTNER

Livestock & Rural Property Agents

[www.dcco.com.au](http://www.dcco.com.au)

# Financial Services



- Rural and Commercial Finance
- Leasing
- Home Loans
- Insurance Premium Funding

**Kel Penfold**

6766 5309; 0427 667 118



**Brendan Moylan MP**

MEMBER FOR NORTHERN TABLELANDS

ADVERTISEMENT



**Electorate Office Armidale**

☎ Suite 1, 175 Rusden Street, Armidale NSW 2350

☎ 02 6772 5552

✉ PO Box 77, Armidale NSW 2350

@ northerntablelands@parliament.nsw.gov.au

**Electorate Office Moree**

☎ Suite 2-6, 161 Balo Street

Moree NSW 2400

☎ 02 6752 5002

**Electorate Office Inverell**

☎ Inverell Shire Council

144 Otho Street, Inverell NSW 2360

☎ 02 6728 8320

Authorised by Brendan Moylan MP, Suite 2-6, 161 Balo Street, Moree NSW 2400. Funded using Parliamentary entitlements.

# what's the goss



with AJ Cross

**Well it wasn't quite the start** local legends Willy Brennan and Simeon Cross were looking for when they decided to dabble into 'Weather Forecasting' recently, where they postponed the Cross Brothers Butchery 3 person golf ambrose fundraiser for Rotary exchange Matisse Pascoe, scheduled for last Sunday due to 'extremely inclement' weather expected.

...

**It certainly didn't faze** the 3 dozen players who teed off in the monthly Stroke Medal round last Sunday, brought forward a week to accommodate the above postponed event which is set down for this Sunday - weather permitting of course. Nominations are being taken from 9.30am for a 10am tee off and the \$30 entry fee includes a sausage sizzle. Let's hope for the sake of the 'Dynamic Duo', Willy and 'Simone', that the weather is at least as good as what it was last Sunday.

...

**Congratulations to local Horse Racing enthusiast** Mark Taylor and his 'Tamac Stud' bred 'Liszomania' on winning the Ladbrokes Mega Multi Benchmark 85 over 1200 metres at Eagle Farm late last month. The 7 year old gelding trained by Todd Payne at Inverell and affectionately known as 'Harry', was ridden by jockey Luke Nolen who piloted Black Caviar to 22 of her 25 wins. 'Harry' snuck home by a nostril and paid a healthy \$21 for the win.

...

**Good to catch up with the Baker Boys** Paul and Norm last weekend when they stopped over at their former hometown where they lived across the road from the 'Millhole' now occupied by Delma Freed (nee Laurie). Their father Mackie was a member of the Walcha Rugby League team that won the Group 5 premiership in 1958 when they defeated Moree 13-9 at the Walcha Showground the year Paul was born.

...

**This year marks 75 years** since the Walcha Rugby League Reserve Grade team won their 1951 New England competition. Walcha went through the season undefeated without having their tryline crossed and only had four points scored against them, penalties conceded by 'Dear Old Dad' I.J. Cross and Bruce Levingston. Outstanding record really.

...

**Back in those days I.J.** was a 19 year old slippery, side stepping, swerving five eighth who also kicked goals - well according to him anyway. Quite a few people both locals and visitors would have heard the story about when he lined up a shot at goal on 'The Park' better known now as Peter Fenwicke Oval. Kicking on a very acute angle I.J. couldn't have connected with the ball any better but as it sailed towards the posts a puff of wind caught it and changed the flight from end over end to sideways which caused the ball to get stuck between the posts.

...

**The referee that day looked directly at I.J.** and asked him what they were going to do now which prompted the kicker to suggest to the nearby ball boy that he should throw him another ball so he could line up a shot to dislodge the stuck ball. It never ceased to amaze me that no matter how many times I.J. told that yarn the amount of listeners that seemed to be half believing him.

...

**Big Wigs of the Week** - Vet Supplies - Katie Cummins; TBW Cafe - Miles Lawrence, Leanne Presnell; Apsley - Brian 'Raggy' Smith; B.C - Julie McLennan, Max Holstien, Adam Hall; Newie - Cindy Brown, Tony Martin, Phil Henny, Miles Lawrence. (All tipsters picked four winners out of the five games on the shortened card.) Some competitions still have tonights State of Origin to go. Special mention - Alice Gibson, Emma Hillier, Phil Bell, Buck Byrne, Adrian Groves all failed to select 1 winner at the Newie.

...

**Back in 2021** my much better half Linda and myself attended a State of Origin game at Suncorp Stadium in Brisbane with Sandra and Rob Laurie, Sonia and Johnny O'Hara, Phillipa and Deon Lawrence where we witnessed NSW whitewashing Queensland 26-0. Not saying that scoreline will repeat itself this evening but 'fair dinkum' NSW supporters will be hoping it does. GO THE NSW BLUES.



## ELITE FODDER

Quality feed from across Australia to your front gate - Simple reliable and Fair



DELIVERED ARMIDALE & WALCHA REGION

CEREAL HAY (Oaten, Barley, Wheaten)		VETCH HAY	
STANDARD FROM	PREMIUM FROM	STANDARD FROM	PREMIUM FROM
\$515 /pt	\$535 /pt	\$620 /pt	\$690 /pt



LUCERNE, CLOVER & STRAW  
AVAILABLE - PRICED  
ON REQUEST

LOADED AND READY TO GO!  
SECURE YOUR  
WINTER FEED TODAY!



All prices are based off B-double loads or larger delivered to you and are Plus GST.



Feed analysis available on all lines on request



CALL JOSH  
0427 598 287

josh@elitefodder.com.au



CALL TIM  
0482 583 276

tim@elitefodder.com.au



www.elitefodder.com.au



Find us on Facebook

# Sally nominated for Nursing Award

The NSW Excellence in Nursing and Midwifery Awards recognise nurses and midwives from across the state who make an outstanding contribution to their patients, colleagues and communities through the work they do every day.

Walcha MPS is incredibly proud that Sally Heazlett has been nominated for the 2026 *Healing Heart Award* in recognition of the compassion and dedication she brings to patients, residents, families and colleagues each day.

The Healing Heart category, which is one of the award categories within the program, recognises nurses and midwives who make a real difference through the care, compassion and support they provide to patients, families and those around them. It acknowledges the quieter side of nursing that often goes unseen outside of healthcare — taking the time to sit with a worried family member, offering reassurance during difficult moments, supporting colleagues through challenging days and consistently going that little bit further to make a difference in someone's experience of care.

Finalists will be announced in August, with the awards ceremony to be held in November. "We wish Sally every success and will be keeping everything crossed that she receives the recognition that we as a service already know she deserves," Walcha MPS Manager, Karen Jenkins said.

# Rugby Sevens Team Crowned Regional Champions

Walcha Central School's Under 14 Rugby Sevens team has booked its place at the NSW Rugby Sevens State Finals after an outstanding undefeated performance at the Secondary Schools Armidale Rugby Sevens Tournament.

The boys showcased exceptional teamwork, skill and determination throughout the day, comfortably progressing through the pool rounds with victories over Glen Innes High School, Armidale Secondary College and O'Connor Catholic College. Finishing on top of their pool earned them a place in the tournament final against the winners of Pool B, The Armidale School (TAS).

In an exciting and hard-fought final, the Walcha boys rose to the occasion, producing another impressive performance to defeat TAS and claim the regional tournament. Their commitment in both attack and defence, along with their excellent sportsmanship, was evident throughout the tournament and made them the deserving winners.

The victory sees the team qualify for the NSW Rugby Sevens State Finals in Sydney, where they will proudly represent the Armidale Region against the best school teams from across the state.



## Armidale Family Day Care

Local Care From People Who Care ❤️

**VACANCIES AVAILABLE NOW!**

**ARMIDALE • GUYRA • WALCHA**

### ♥️ A PLACE WHERE CHILDREN THRIVE

At Armidale Family Day Care, children enjoy safe, nurturing home-based environments where they receive individual attention and quality early childhood education from experienced educators.

#### WHY CHOOSE FAMILY DAY CARE?



**EXPERIENCED EDUCATORS**  
Qualified and experienced educators.



**CCS APPROVED**  
Child Care Subsidy available.



**MINIMUM 8-HOUR CHARGE**  
Only pay for a minimum of 8 hours care.



**SMALL GROUP CARE**  
Home-like environments with individual attention.



**SAFETY FIRST**  
Safe, secure and caring environments.



**QUALITY ASSURED**  
Meeting National Quality Standards.



**ENROL TODAY**  
**6772 5300**



[armidaleanddistrictfamilydaycare.com](http://armidaleanddistrictfamilydaycare.com)

# Eight Walcha Students Help Drive PLC Armidale's Creative Arts Success

Eight students from Walcha have helped PLC Armidale conclude Term Two with exceptional success across its Creative and Performing Arts (CAPA) program, contributing to outstanding results in music, dance, drama and visual arts at regional and state levels.

Georgina Arundale-Fuller, Anna and Georgie Blake, Sophia Marchant, Hannah Swain, Amelia Webb, Jess Wellings and Claire Williams were among the talented performers representing the College in its award-winning choirs and dance ensembles throughout a remarkable term of competition and performance.

Throughout Term 2, PLC girls excelled across multiple competitions, including the Tamworth Choral Eisteddfod, Armidale Eisteddfod, New England and Tamworth Dance Eisteddfods, the Sport for Jove Shakespeare Carnival and the University of New England School Acquisitive Art Prize (UNESAP), demonstrating both breadth and depth of artistic talent.

Walcha girls were part of the more than 45 PLC Armidale choristers who returned from the Tamworth Choral Eisteddfod with impressive results. Bel Canto won the Secondary Schools Choir section, the PLC SIP Ensemble placed first in the Chamber Choir section, and the PLC Senior Choir achieved second place in the Tamworth Choral Championship. The Stage 6 Choir placed third in the Secondary Schools Choir section, while the Stage 5 Elective Music Class received a Highly Commended award.

Success continued at the Armidale Eisteddfod, where PLC ensembles dominated across multiple categories. First-place awards were achieved by the K-2 Choir, Years 3-6 Choir (Unison and Two-Part sections), Junior Piano Trio, Year 8 Band, Stage 5 Class Ensemble, which also received the Perpetual Shield, Stage 6 Music Ensemble and PLC Cello Ensemble, which was awarded the K-6 String Ensemble Perpetual Shield. Sharni Webb excelled in the string section and was selected for the Armidale Youth Strings Ensemble earlier this year.

At the Armidale Eisteddfod Gala Concert, PLC students featured prominently, including a Character Sketch performance by Georgina

Arundale-Fuller, while across the festival the College collected five Adjudicator Awards and eight Championship Awards.

Dance students also enjoyed outstanding success, with the Stage 5 Jazz Ensemble placing second, the Senior Dance Ensemble placing third, and the Stage 5 Contemporary Ensemble receiving a Highly Commended award - seven of the Walcha girls were part of these ensembles.

PLC's drama program also shone, with five entries progressing to the NSW Shakespeare Carnival State Finals - including a Smartphone Film produced by Hannah Swain, Georgie and Anna Blake and a Physical Theatre entry featuring Sophia Marchant. Competing against schools from across New South Wales and the ACT, PLC was crowned State Champion in both the Duologue and Music categories.

Head of Creative and Performing Arts Mrs Jo Wysel said she was proud of what students had accomplished throughout the term.

"As we reach the end of another busy and rewarding term, I have been reflecting on just how much our students have achieved," she said.

"From state-level success to thought-provoking theatre, this term has demonstrated not only the talent of our students, but also their willingness to embrace challenge, creativity and artistic risk."

Principal Nicola Taylor said the contribution of the College's Walcha students reflected the opportunities available through PLC Armidale's extensive CAPA program.

"Our Walcha students have embraced every opportunity to perform, create and grow this term," Mrs Taylor said.

"Their involvement across our award-winning choirs and dance ensembles is a wonderful example of the confidence, commitment and teamwork that define our Creative and Performing Arts program. We are incredibly proud of the way they have represented both PLC Armidale and the Walcha community."



## New Financial Year Ad Rates

- Front Page \$145 - Vertical 4.5cm x 11cm
- Full Page \$420 - 19cm x 27.4cm
- 1/2 Page \$280
  - Vertical 9.4cm x 27.4cm
  - Horizontal 19cm x 13.5cm
- 1/3 Page \$210 - Vertical 6.3cm x 27.4cm
- 1/4 Page \$175 - 9.4cm x 13.5cm
- 1/8 Page \$105 - 9cm x 6.3cm

### Trade & Professions Only

- 5.4cm x 6.3cm - \$45
- 6.3cm x 3cm - \$35

**DISCOUNTS FOR  
REGULAR ADVERTISERS**  
(MIN. 4 CONSECUTIVE WEEKS)

FULL PAGE **\$350**  
HALF PAGE **\$220**  
QUARTER PAGE **\$135**

**CLASSIFIED PAGE**  
**\$12 per line**  
(min. charge \$24. Up to and including 7 lines)

**(8 lines+)**  
**\$16 per cm**  
(column width 6cm)

**CLASSIFIED BOXED ADS \$20**  
per column cm

**FULL PAGE INSERTS**  
**\$370 PLUS**  
IF YOU NEED US TO PRINT THEM  
(2000 copies)

A4 White paper - Black printing  
Single sided \$230  
Double sided \$290

A4 coloured paper—black printing  
Single sided \$290  
Double sided \$340

A4 colour  
Single sided \$350  
Double sided \$500

Out of town only  
1/2 the price then  
add \$50

**PLEASE NOTE**  
**SOME PAGES HAVE PERMANENT BOOKINGS**

### TO PLACE ADS

Contact **Walcha Telecottage** Phone: 6777 1111 [or](mailto:wtc@walchatelecottage.com.au)  
Email: [wtc@walchatelecottage.com.au](mailto:wtc@walchatelecottage.com.au)

### DEADLINE FOR BOOKINGS

**Mondays 4pm**  
Booking early will secure your preferred page



## Wednesday Golf

It was a stableford round that we played on Wednesday for a trophy donated by Nick Hall's Adcock Partners trophy.

The winner was Donna Martin with 36 points. Both Simone Sweeney and Lorraine Walshe were hot on her heels, also on 36 points.

Sweepstakes were also extremely close with Polly Locke, Sal Rutherford and Ark Street all accumulating 35 points. The second shot on Hole 16 was Donna Martin with a birdie and Alison Cameron claimed nearest the pin on Hole 3.

Today is a draw for partners round, playing for a trophy donated by Cheryl McDonald and Donna Martin.

## Ladies Bowls

Last week after the greens had been cleaned thanks to a volunteer, and a drop of rain, an enjoyable game of fours was played. Marie Spink, Lyn Burnell, Esther Hunt and Pam Makeham had a win against Debbie Richards, Olive Chandler, Margaret Tickle and Lee McCoy. Save the date Saturday 31 October for our bowls fundraiser day. The monthly meeting is Thursday 16 July. We invite all new players to join us for a game 9.00am for a 9.30am start.

## At the Nineteenth

A healthy field of around three dozen players teed off last Sunday in a Stroke Medal round for a trophy donated by

Doug McDonald which was won by Will Nicholls after he registered a 67 nett and then survived a countback with Rose Baumer.

The overall winner also took out the A Grade division and Putting Competition after engaging his flat stick on just 20 occasions.

Club Champion Michael Stackman carded the best Scratch score, a five over par 75, and hit the most accurate tee shot on the third hole.

B Grade went to Col Berry on 69 nett whereas in C Grade Rose Baumer got the job done with her equal best 67 nett which included the NTP on 16.

Sweepstakes to Lee Fletcher 68, John McCormack 69, Bill Fletcher, Michael Stackman, Andrew Crawford and Willy Brennan (all 70 nett) on countback from Daniel Boyd. Long drives sponsored by Tony 'Backhand Larry' Asmus were caressed by Nixon Bird (A), Dion Bird (B) and Brian Lynch (C) while the 'Coveted Pink Shirt' for most Putts was eagerly accepted by Dion Bird after he racked up 34 jabs.

NTP on the 18th was won by Billy Fletcher.

In Match Play Lee Fletcher defeated Peter Berry 7 and 6. Last Saturday the weekly 9 hole competition attracted six players including winner Pete Whellan who accumulated 19 stableford points comfortably clear of runner up Pauline Carter on 15 pts but only after surviving a countback with organiser John McCormack.

This Sunday the postponed Cross Brothers Butchery 3 person Ambrose Fundraiser for Rotary Exchange student Matisse Pascoe is scheduled where nominations are being taken from 9.30am for 10am tee off. The \$30 entry fee includes a sausage sizzle.

## Bowls

Thursday bowls: Greg Carter & Peter Halliday defeated Brian Goodwin & Tony Batterham 13/10. Noel Goodwin & John McCormack defeated Don Mahoney & Barry Kliendienst 19/9. Noel & John won the chooks. The next round of Pairs will be played this Saturday 11th July.



Motor Dealer Licence #MD064996

# TICK'S PICK'S

## THIS WEEK AT APSLEY MOTORS

**DRIVE LARGE & IN CHARGE, ANYWHERE YOUR SENSE OF ADVENTURE DARES TAKE YOU IN THE NEW-GEN MITSUBISHI TRITON & OUTLANDER**



**DRIVE AWAY!**

~~\$46,990~~

**\$42,990**

### MITSUBISHI TRITON GLX DOUBLE CAB

- ◆ 2.4L intercooled Bi-turbo diesel
- ◆ 6 speed automatic transmission with manual shift
- ◆ Easy select 4WD
- ◆ Vinyl floor covering
- ◆ All terrain tyres
- ◆ Built 2024

**EVERYTHING YOU WANT IN A TOUGH, RELIABLE & ENDURABLE UTE**



**DRIVE AWAY!**

~~\$50,100~~

**\$39,990**

### 2024 MITSUBISHI OUTLANDER LS

- ◆ 2.5L 4 cyl. unleaded engine
- ◆ CVT transmission
- ◆ 7 seater
- ◆ 18" alloy rims
- ◆ White diamond paint

**ADVENTUROUS, STYLISH & SOPHISTICATED!**



**DRIVE AWAY!**

~~\$49,490~~

**\$44,990**

### MITSUBISHI TRITON GLX +

Includes all GLX double cab features plus:

- ◆ Rear diff lock
- ◆ 17" alloy wheels
- ◆ Side steps
- ◆ Privacy glass & silver accent seat stitching

**THE POWER, PERFORMANCE & TOWING CAPACITY TO GET THE JOB DONE**

**10 YEARS WARRANTY, 10 YEARS CAPPED PRICE SERVICING, 10 YEARS ROADSIDE ASSISTANCE**

**FOR MORE INFO OR TO MAKE ONE YOURS CALL JAYDEN OR JAMES (TICK) 02 6777 2755**



## Public Notice

### BETTER BORES & PUMPS

Don't Settle for Dust - Drill for Water!  
Our Water Drilling Rig is in the Area.  
No Rain. No Run-Off.

Work Guaranteed. Phone 0428 667 842

The **Walcha Vet Clinic** will not have normal trading on Friday the 10th of July due to a major electrical upgrade being done meaning there will be no power in the building for the day. As always, there will be a vet on call for genuine emergencies. We will be back to normal trading on Saturday from 10-12.

## WINDOW CLEANING

Do not panic Fletcher Chappell and Lockie Chappell will clean windows for you while I am away.

**Fletcher: 0457 834 196**

Please do not call as I am away.  
Cal Krossley

## For Sale

**SO HOT FIREWOOD** - Keep warm this season. Premium well seasoned hardwood. Locally owned and operated supporting our rural community. Call now to place your order 0428 370 356.

## Public Notice (cont)

### Walcha Council Public Truck Wash Bay Temporary Closure



Residents are advised that the public Truck Wash Bay will be temporarily closed from Tuesday 21 July to Thursday 23 July 2026 (inclusive) to allow for scheduled maintenance works.

The facility is expected to reopen on Friday 24 July 2026. However, should the works be delayed due to adverse weather conditions, the reopening date may be postponed. Any changes will be communicated to the public as soon as possible.

We apologise for any inconvenience and thank you for your understanding.

**Stephen Parry, General Manager**  
Walcha Council, PO Box 2, Walcha NSW

## Walcha Home Furnishing

**Now Open**  
**Buying and Selling**  
**Quality Furniture**  
PH: Dave 0427 771 469

## Save the Date

**Save the Date** - Saturday October 31, 2026.  
The event is Bowling Club Fundraising Day.

## Position Vacant (cont)

### Walcha Council

*Small Council, Big Opportunities*



**Administration Officer - Riverview**

- Permanent Part-Time

**Closing 27 July 2026**

For more information about these positions or to apply please go to <https://bit.ly/WCvacant>

**Stephen Parry, General Manager**  
Walcha Council, PO Box 2, Walcha NSW

## Meeting Notice

**Walcha Hospital Auxiliary AGM** 16th July 2026 6pm, Walcha Council Community Care Centre. R.S.V.P. 9th July to Vic Mclvor 0427 772950 or [walchahospitalauxiliary@outlook.com](mailto:walchahospitalauxiliary@outlook.com)

thumbs



- 👉 To the Police for their Community morning at Cafe Graze, mingling with the community.
- 👉 To the man who climbed onto my up-turned car. Thank you for being such a lovely presence when I needed one. Thank you for rescuing my dog, and for your reassurance and help.

**Contributions will be received in person, by phone or email and must be accompanied by your name and contact details. They will be printed at the discretion of the editor.**

## Public Notice (cont)



## New England Renewable Energy Zone

### Draft Access Scheme Declaration

EnergyCo is inviting community and industry feedback on the proposed access scheme for the New England Renewable Energy Zone (REZ). The Draft Access Scheme Declaration and accompanying Positions Paper set out the rules for how solar, wind and large-scale battery storage projects would connect to network infrastructure within the New England REZ.

To view the Draft Declaration and Positions Paper, register for a webinar or provide feedback, follow the links on our website at [energyco.nsw.gov.au/ne](http://energyco.nsw.gov.au/ne)

Feedback on the Draft Declaration is open until **Thursday 6 August 2026**.

## DEADLINE FOR STORIES, ADS AND CLASSIFIEDS

Monday 4:30pm



## SELF STORAGE

NORTH STREET – WALCHA  
**Various sized sheds**  
**Security fenced**

0439 584 344  
 or 0428 653 307

## Nick Moore PLUMBING & EXCAVATION SERVICES

WALCHA & SURROUNDING AREAS



Highly qualified and experienced plumber  
 All aspects of Plumbing and Gas Fitting  
 Wood heater installation  
 Roofing and Guttering  
 Gold License No 59555C

**Nick 0418 691 306**  
 nickmoore203@yahoo.com.au  
 Katy 0422 034 660

# LUX ELECTRICAL

LEE HARRISON  
 0448 840 461  
 lee.harrison@electrical@gmail.com  
LICENCE NO. 480725C  
 CCTV | SECURITY SYSTEMS | RE-WIRES | LIGHTING & POWER | SAFETY  
 SWITCH UPGRADES | RENOVATIONS | INSTALLATIONS & MAINTENANCE  
 FULLY LICENCED & INSURED



Serving Homes, Business & Rural Properties

- ✓ General Pest Control (Spiders, Ants, Cockroaches & more)
- ✓ Timber Pest & Termite Inspections
- ✓ Termite Treatment & Monitoring Systems
- ✓ Rodent Control & Baiting Programs
- ✓ Wild Animal Control



Also offering Property Maintenance & Rural Contracting services

Licensed & Insured | Local & Reliable

0437 532 954

## CHIROPRACTOR

**Samantha Goor**

B.Sc. Anatomy (NSW) M Chiroprac (Macq)  
 Tuesday & Friday from 9.00am  
**6777 1340**

## STACES FAST FREIGHT

Delivering  
 Tamworth – Walcha  
**0429 608 409**



## KG'S CAR DETAILING

Ph: 0419 469 405

## ENGINEERING

**John Wall**

- Stock floats • Feeders • Sheep & cattle yards • Steel framed sheds & mobile welding
- 6778 0588 • 0428 778 087**

## A G W RURAL CONTRACTING

GPS Equipped boom spraying  
 Andrew Wauch 0427 549 748

## MOBILE-FIX AUTO+AIR

Mobile Repairer & Airconditioning Specialist  
Licensed Vehicle Repairer LIC No. 96696 RTA Lic No. AU23616  
**PATRICK STAGE – WALCHA**  
 Mob. 0428 780 077 Ph. 6778 0595

## AQF3 ARBORIST

Tree lopping & removal  
 Truck  
 Bobcat  
 Post hole digger  
 Trencher  
 Woolshed Cleaning  
 treetopservices@bigpond.com

**Scott Kermode**  
 0427 100 889



Andrew: 0427 549 748  
 Toni: 0421 972 354

## church notices



### ANGLICAN

**July 12** - Walcha Service 9.30am  
 Nowendoc Service 2.00pm  
**July 19** - Walcha Service 9.30am  
**July 26** - Walcha Service 9.30am  
 Anglican Church  
 Phone 6777 2543  
 or email: walchaanglican@gmail.com

### PRESBYTERIAN

Walcha: every Sunday 9:30am  
**Youth Group** every Saturday 5pm - 7pm, during term.  
 We'd love for you to join us.  
 All welcome.  
 Phone 6777 2539.

### CATHOLIC

**Sunday Mass** 10.00am

**DISCLAIMER** LETTERS TO THE EDITOR are submitted on the condition that The Walcha Telecottage as the publisher of The Apsley Advocate may edit and has the right to, and license third parties to reproduce in electronic form and communicate these letters. They are published at the discretion of the Editor and Board. The Apsley Advocate is printed by The Walcha Telecottage, PO Box 116 Walcha NSW 2354. Phone 6777 1111 Fax 6777 1112. The Walcha Technology Co Operative Limited, the Editor and Staff of this Newspaper have published any article here-in in good faith and bear no responsibility in respect to the accuracy of the information contained in such article. Any person or persons publishing material in this Newspaper do so in the knowledge that they shall personally accept any responsibility for the accuracy and other correctness of such articles and also accept full responsibility for the legal consequences if it be found that the article contains any inaccuracies in the contents of any such articles.

**DEADLINE MONDAY 4.30PM** Editor: Anthea Nivison. Advertising/Sport: Joscisca Matapakia, Kate Connors and Kersten Wall.

# Marchant Est. 2000

**BROS. PTY. LTD.**



**BULK WATER DELIVERY AVAILABLE**

A FULL RANGE OF AFFORDABLE TRANSPORT & EARTHMOVING

Dam construction/maintenance, stick raking, gravel available, road building, site prep, pipe laying and all timber work. Check out our website for the full range of machinery, attachments and services available.

**Earthmoving and Heavy Haulage Transport**  
**Jason 0427 490 487 • Jamie 0429 771 351**  
 02 6777 2024 marchantbros@bigpond.com  
 www.marchantbros.com.au

## WALCHA **BOWLING** & RECREATION CLUB

*"Let the good times roll"*

### WHAT'S ON?

**Thursday 9** 12.00pm – Close  
**BOWLS** 9.00am Ladies, 1pm Social  
**BINGO** 12.30pm

**Friday 10** 3.00pm – Close  
**Free Bingo** drawn at 6.30pm  
**Raffles** drawn at 7pm

### FRIDAY NIGHT SPECIALS

- Home Made Lasagna
  - Creamy Prawn & Crab Pots Topped With Parmesan
  - Panko Topped Avocado & Bacon Parmigiana
- Home deliveries • Town limits only  
**FOR CATERING NEEDS CALL:**  
 Dianna – 0412 536 760 or 5722 6003

**Saturday 11** 11.00am – Close  
**5.00PM BISTRO**

**Sunday 12** 11.00am – Close  
**12.00PM BISTRO**  
**Raffle** tickets from 12pm, drawn 1pm.

### MEMBERS DRAW

DRAWN AFTER THE RAFFLES  
**FRIDAY \$900**  
 YOU MUST BE A MEMBER FOR 2025/2026 TO BE ELIGIBLE TO WIN

Come down on Wednesday night at 6pm for some Boot Scoot'n fun with our Line Dancing classes. \$10 for an hour of pure toe tapping fun

#### Up Coming Event

Christmas in July  
 Contact Di on 0412 536 760 to book your table

**Next round of pairs is due to be played this Saturday**

Bistro open on Thursday night, don't cook, let the dinner ladies take care of that for you

#### DO YOU LIVE IN WALCHA SHIRE?

If so you MUST be a member to enter the Club **Social Membership \$15. Full Membership \$120.** PHONE 6777 2077



## OK EARTHMOVING

**SPECIALISING IN ROAD CONSTRUCTION & MAINTENANCE**

- Bulldozers
- Excavator 2t - 30t
- Truck and Dogs
- Gravel supply
- Graders
- Rollers
- Skid steers + multiple attachments
- Forestry mulching
- Land development
- Large Dam construction

**Peter O'Keefe : 0429 944 821**  
**Will O'Keefe : 0488 925 845**



Proudly servicing Walcha and surrounding districts for over 30 years



Wayne Hoy: 0427 281 060  
 Matthew Hoy: 0427 322 640  
 Aaron Bullen: 0409 776 340

## SPRAYING EXCAVATING EARTHMOVING

*GPS & Auto Steer Equipped*

Remote Aerial Spraying & Spreading  
 4x4 Truck & Boomspray, Quikspray Trailers  
 4x4 Tractors & Casotti's

