

# SESSION 2: LAND AS RELATIONSHIP + INTRODUCTIONS TO THE LPRM

January 28, 2026  
Elder Copper Joe Jack



**Land and Peoples  
Relationship Model**



Funded by the  
Government of Canada's Sustainable  
Development Goals Funding Program

Program Partners

**Canada** 



# WELCOME AND OPENING FROM ELDER COPPER JACK

Program Partners



Funded by the  
Government of Canada's Sustainable  
Development Goals Funding Program

Canada





## A NOTE FROM ELDER COPPER

---

It's okay to not to understand everything shared throughout the course.

There are many layers to the teachings, and it can take people a long time to hear and understand them all.

Don't be afraid to ask questions.

Program Partners



Funded by the  
Government of Canada's Sustainable  
Development Goals Funding Program

Canada





# HOUSEKEEPING

---

**Questions:** Please always type your questions in the chat; we will note them down and either address them today or by email. We appreciate good questions, so please keep them coming.

**Mic & Camera:** Please mute yourself, and feel free to turn off your camera during the teachings if you prefer. Please turn on your camera during discussion time, if you can!

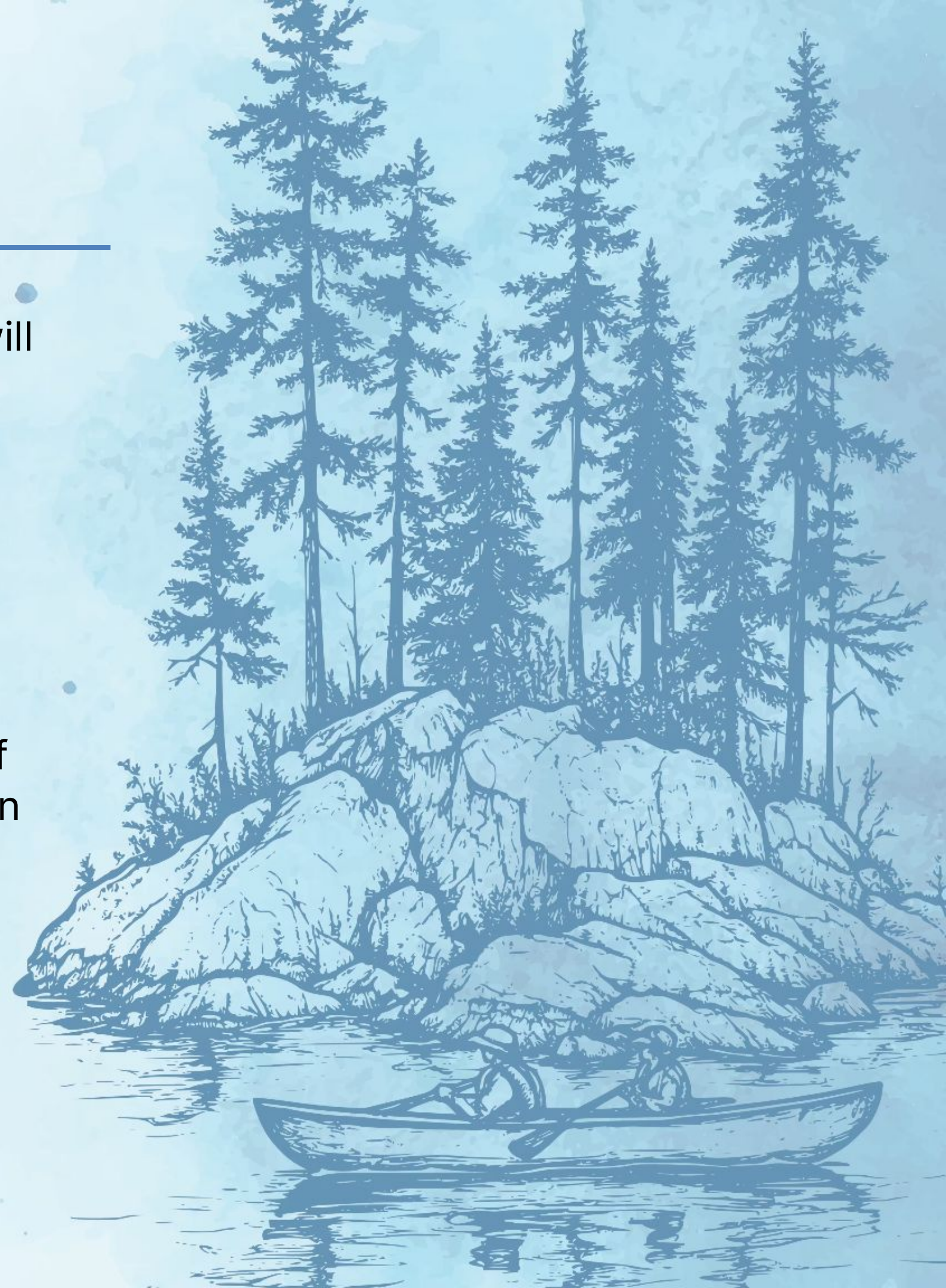
**Media Release:** We will be recording sessions for internal use. If you have not filled out your media release, there will be a copy in your personal LPR Model Winter 2026 Cohort folder.

Program Partners



Funded by the  
Government of Canada's Sustainable  
Development Goals Funding Program

Canada





# SESSION FLOW

---

**1 HOUR**

An Introduction to the LPR Model with Elder Copper

**5 MINS**

Body Break

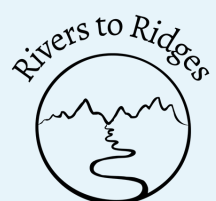
**45 MINS**

Breakout groups, report back

**10 MINS**

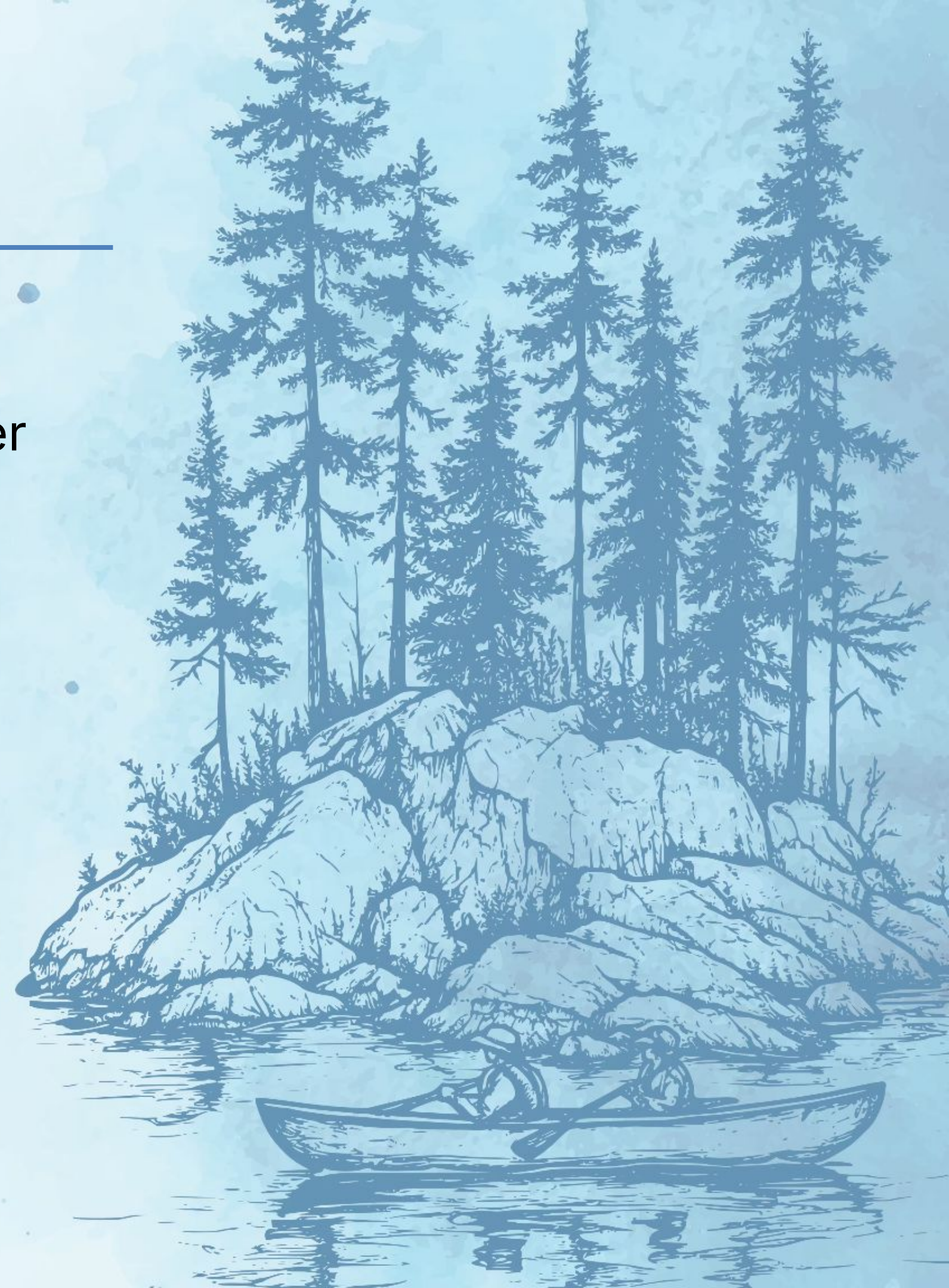
Closing thoughts from Elder Copper

Program Partners



Funded by the  
Government of Canada's Sustainable  
Development Goals Funding Program

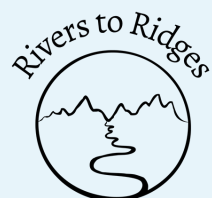
Canada





# AN INTRODUCTION TO THE LPR MODEL

Program Partners



Funded by the  
Government of Canada's Sustainable  
Development Goals Funding Program

Canada





# THE LAND AND PEOPLES RELATIONSHIP MODEL

---

Functions as:

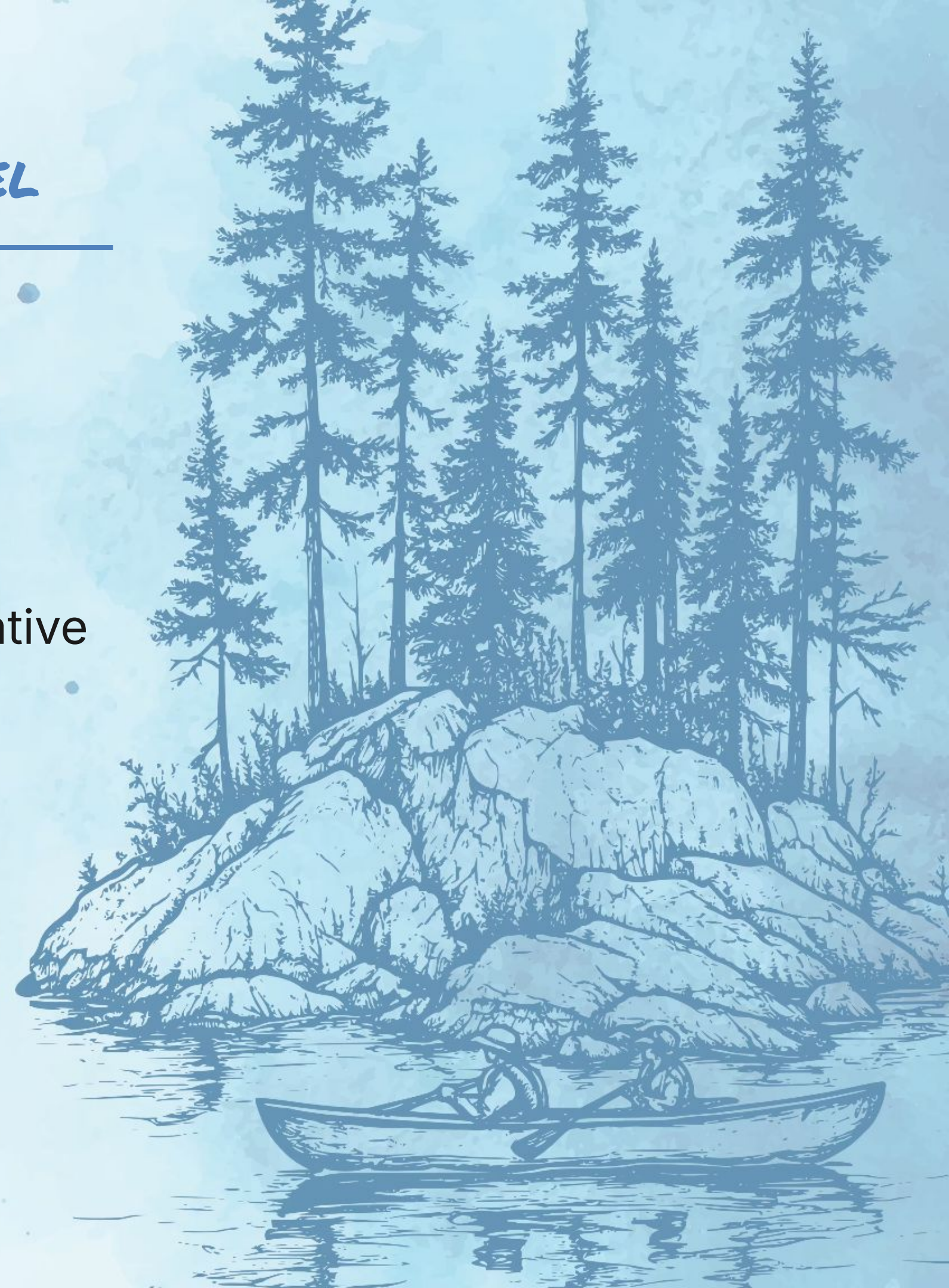
- A consent-based decision-making tool
- A method to direct, balance and frame the collaborative planning process
- Also described as a 'No Voice Talking Stick'

Program Partners



Funded by the  
Government of Canada's Sustainable  
Development Goals Funding Program

Canada





# THE LAND AND PEOPLES RELATIONSHIP MODEL

---

Is intended to:

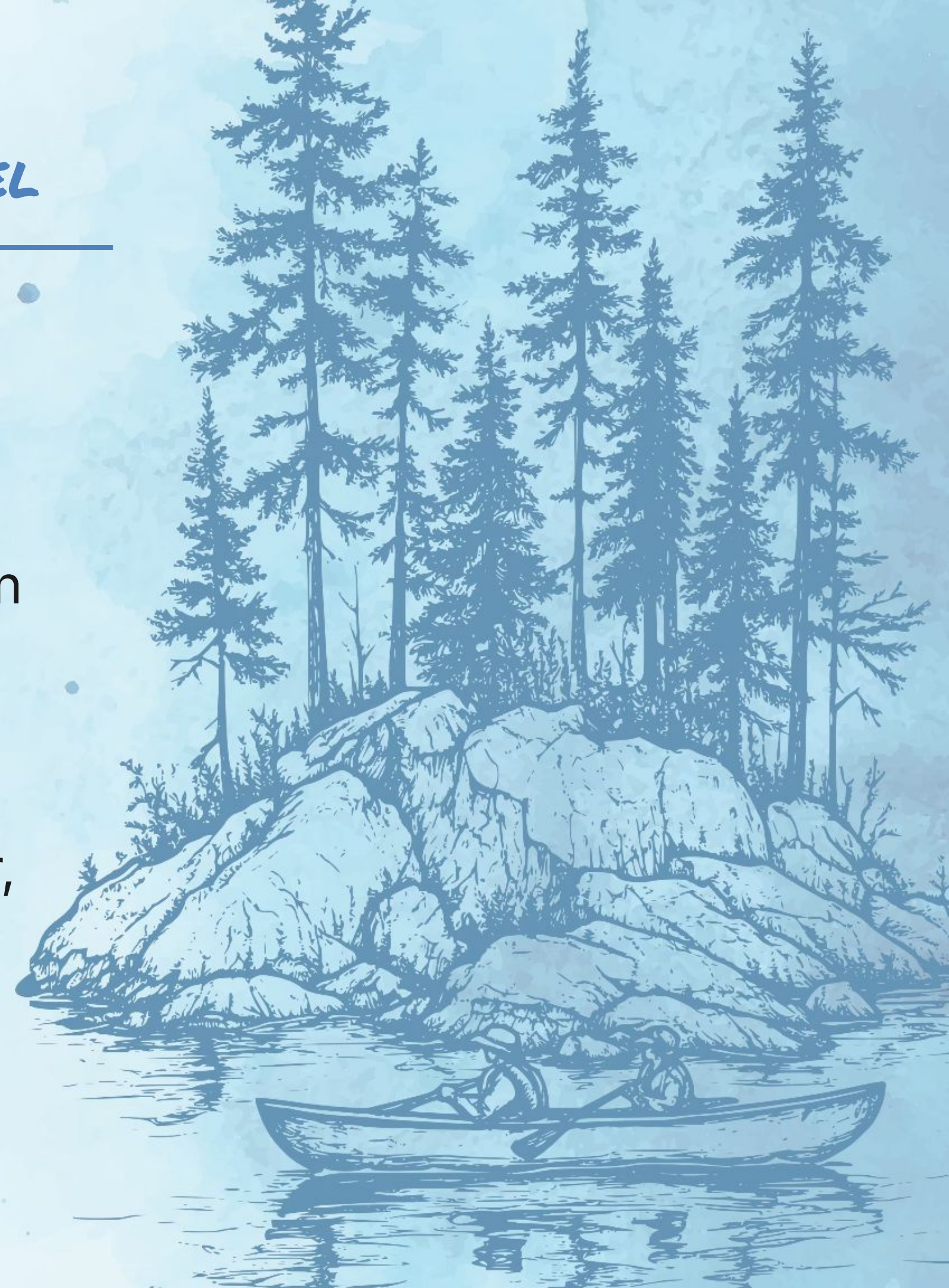
- Rebuild healthy relationships and respect between land and people, knowing that reconciliation can only happen if people live in harmony with nature
- Rebuild respectful relationship between peoples where no knowledge system, gender, or group is superior to another.

Program Partners



Funded by the  
Government of Canada's Sustainable  
Development Goals Funding Program

Canada





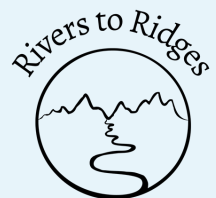
# THE LAND AND PEOPLES RELATIONSHIP MODEL

---

Consists of:

- Three key laws
  - Respect
  - Care
  - Share
- Two decision-making tools
  - No Voice
  - Knowledge Stream Tree

Program Partners



Funded by the  
Government of Canada's Sustainable  
Development Goals Funding Program

Canada



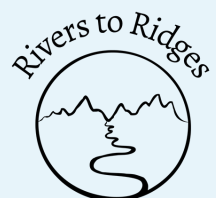


## RESPECT, CARE, SHARE LAWS

---

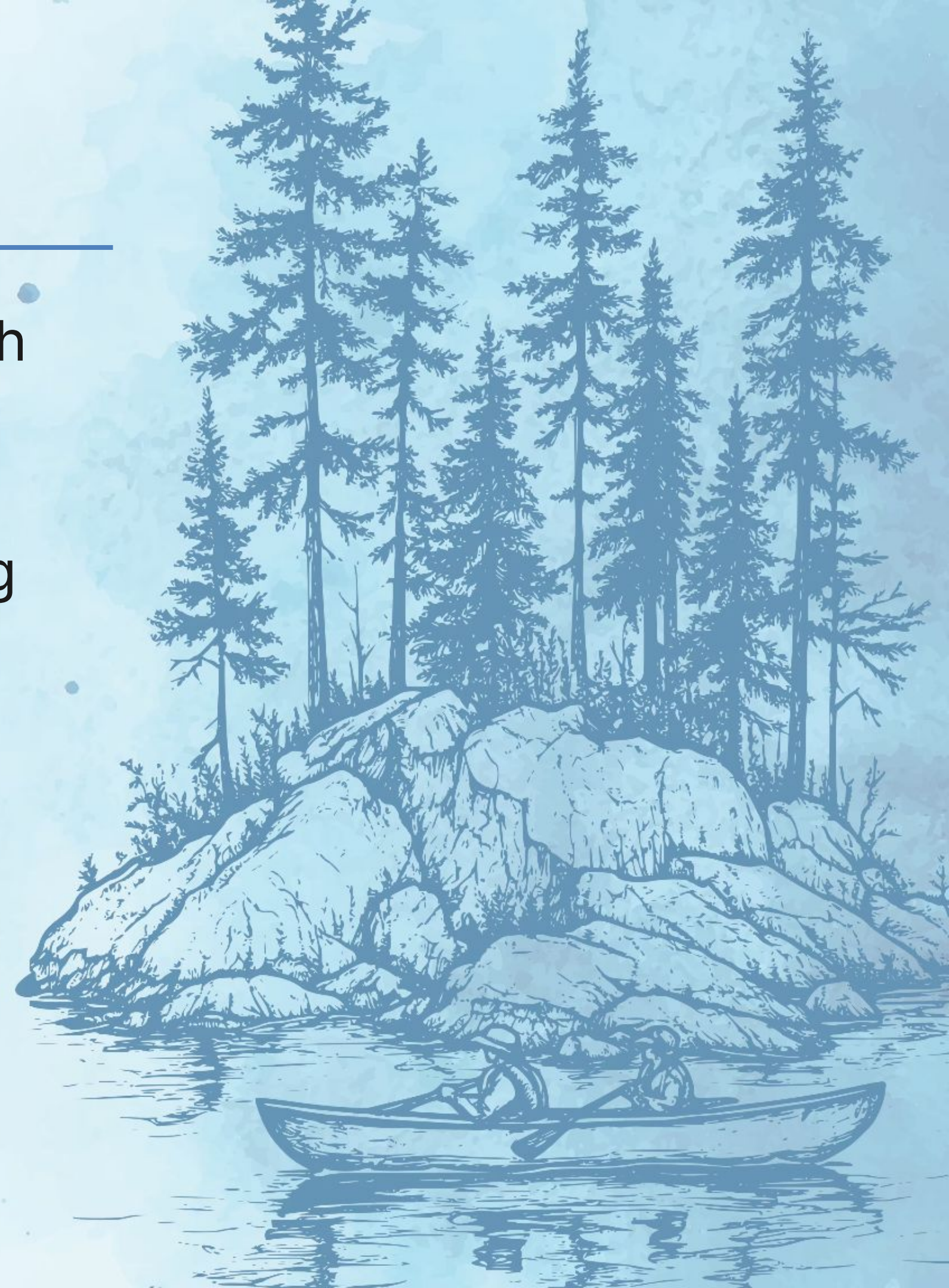
- Treated equally and used in combination with other natural laws
- Applied internally first, then to others moving outwards towards the broader worldview
- A sacred space is created by overlapping all three laws.

Program Partners



Funded by the  
Government of Canada's Sustainable  
Development Goals Funding Program

Canada





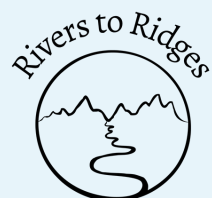
# THE NO VOICE PERSPECTIVE

- Long Ago Peoples' approach to land relationship includes all affected parties' perspective in planning and decision-making;
- Those with "No Voice" are included in all discussions and decisions made at the roundtable;
- The "No Voice" contribution is a critical factor in decision-making.



*"No Voice" includes non-human relations of the lands & waters, and future or past generations, represented at the table with a sign or symbol.*

Program Partners



Funded by the  
Government of Canada's Sustainable  
Development Goals Funding Program

Canada



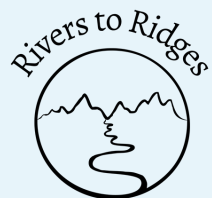


# KNOWLEDGE STREAM TREE

---

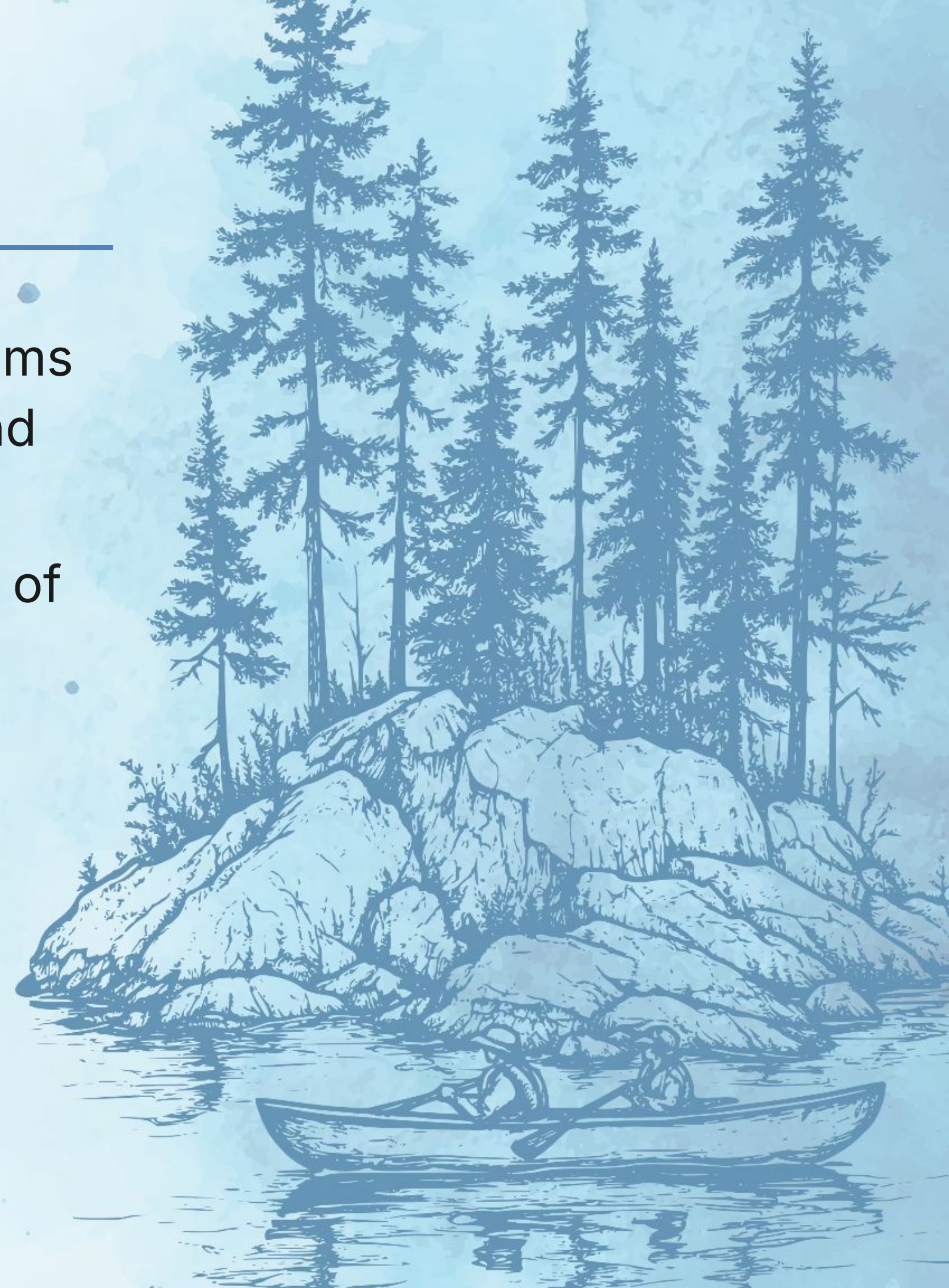
- A parable of how two (or more) knowledge systems and worldviews could function collaboratively and equitably side-by-side;
- Sometimes referred to as “walking on both sides of the stream”
- The watershed framework of the stream tree consists of tributaries (branches) that allow life-giving water (knowledge) to flow into the mainstream (trunk).

Program Partners



Funded by the  
Government of Canada's Sustainable  
Development Goals Funding Program

Canada





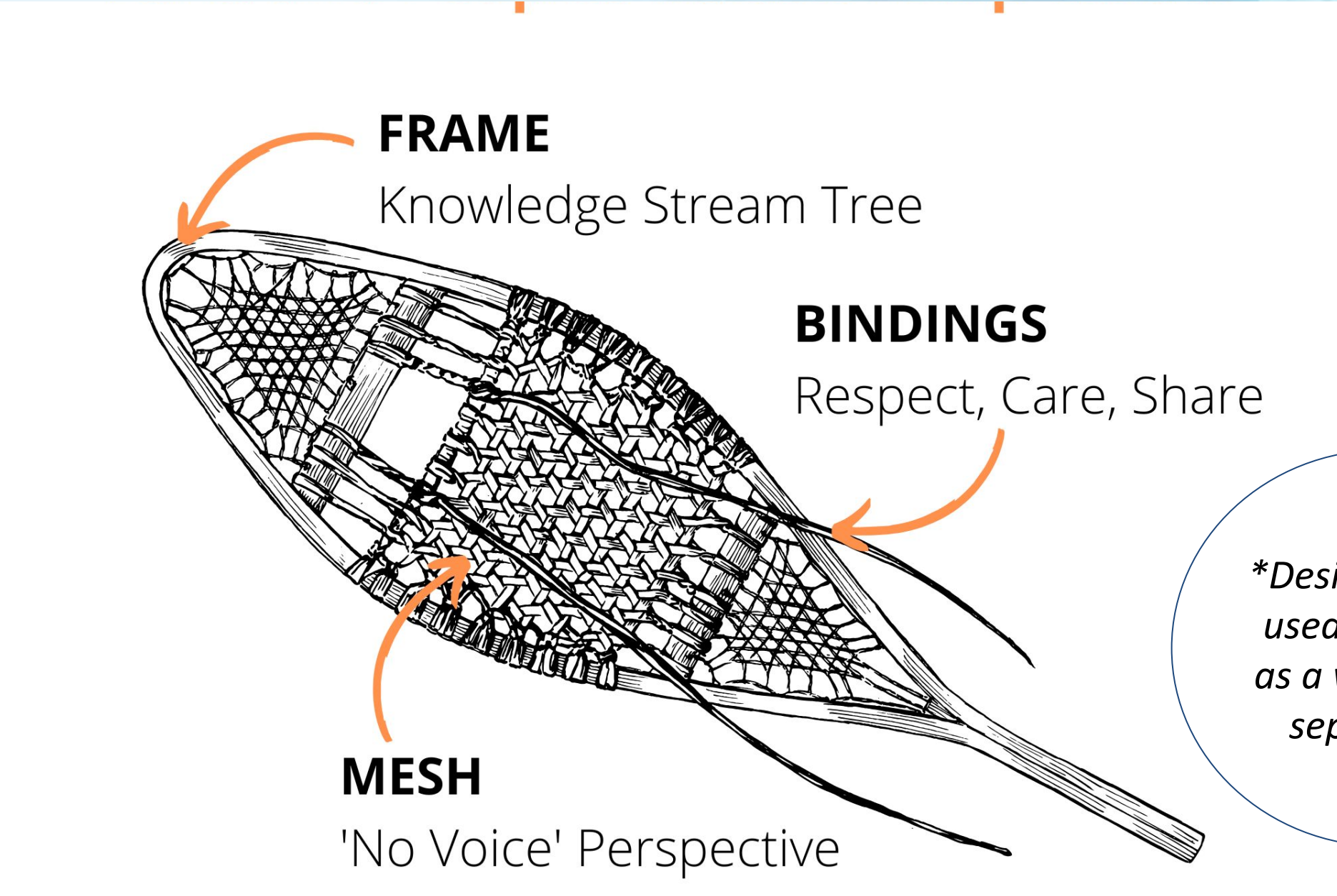
# KNOWLEDGE STREAM BANKS



Knowledge system regard each other,  
but do not necessarily meet or bridge



# LPR MODEL AS A RELATIONSHIP BUILDING TOOL



*\*Designed to be used together, as a whole (not separately)*

Program Partners



Funded by the  
Government of Canada's Sustainable  
Development Goals Funding Program



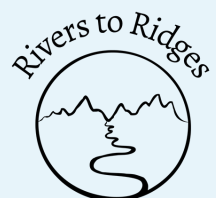


# RULES OF ENGAGEMENT

---

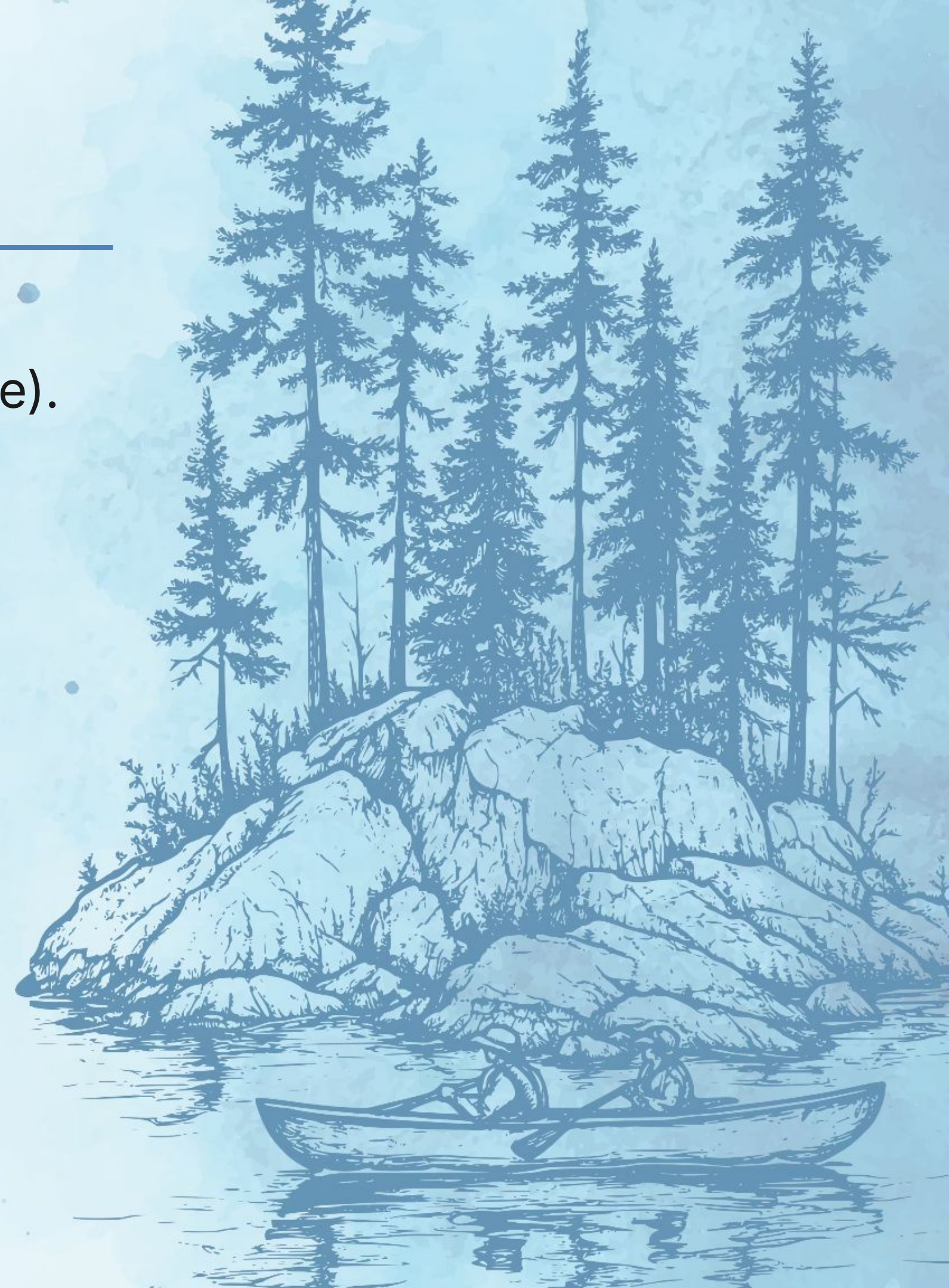
1. Show respect for each other (including No Voice).
2. Feel as much as you think.
3. Listen to understand what is said.
4. Clarify what you say and hear.
5. Have patience.

Program Partners



Funded by the  
Government of Canada's Sustainable  
Development Goals Funding Program

Canada





# WATER

# LAND

## Collaborative Planning Process

ITK



ITK

B

C

D

STEWARDSHIP PLAN



### WHAT?

Key ITK

- Values
- Protocols
- Principles
- Laws

A

Watermarkers where consensus could be achieved / areas of common interest throughout the process

WS

### HOW?

Critical Elements in Plan

Implementation Plan (IP) should be developed at the same time the plan is developed



# 5-MINUTE BODY BREAK

Program Partners



Funded by the  
Government of Canada's Sustainable  
Development Goals Funding Program

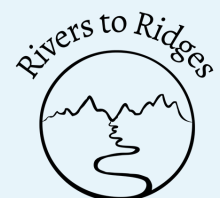
Canada





# STORY REFLECTIONS AND TEACHINGS

Program Partners



Funded by the  
Government of Canada's Sustainable  
Development Goals Funding Program

Canada





## SHARING CIRCLE – BREAK OUT GROUPS

---

In groups of 7, take **25 minutes** to discuss:

- What were your takeaways from 1) this week's stories and 2) the model teachings?

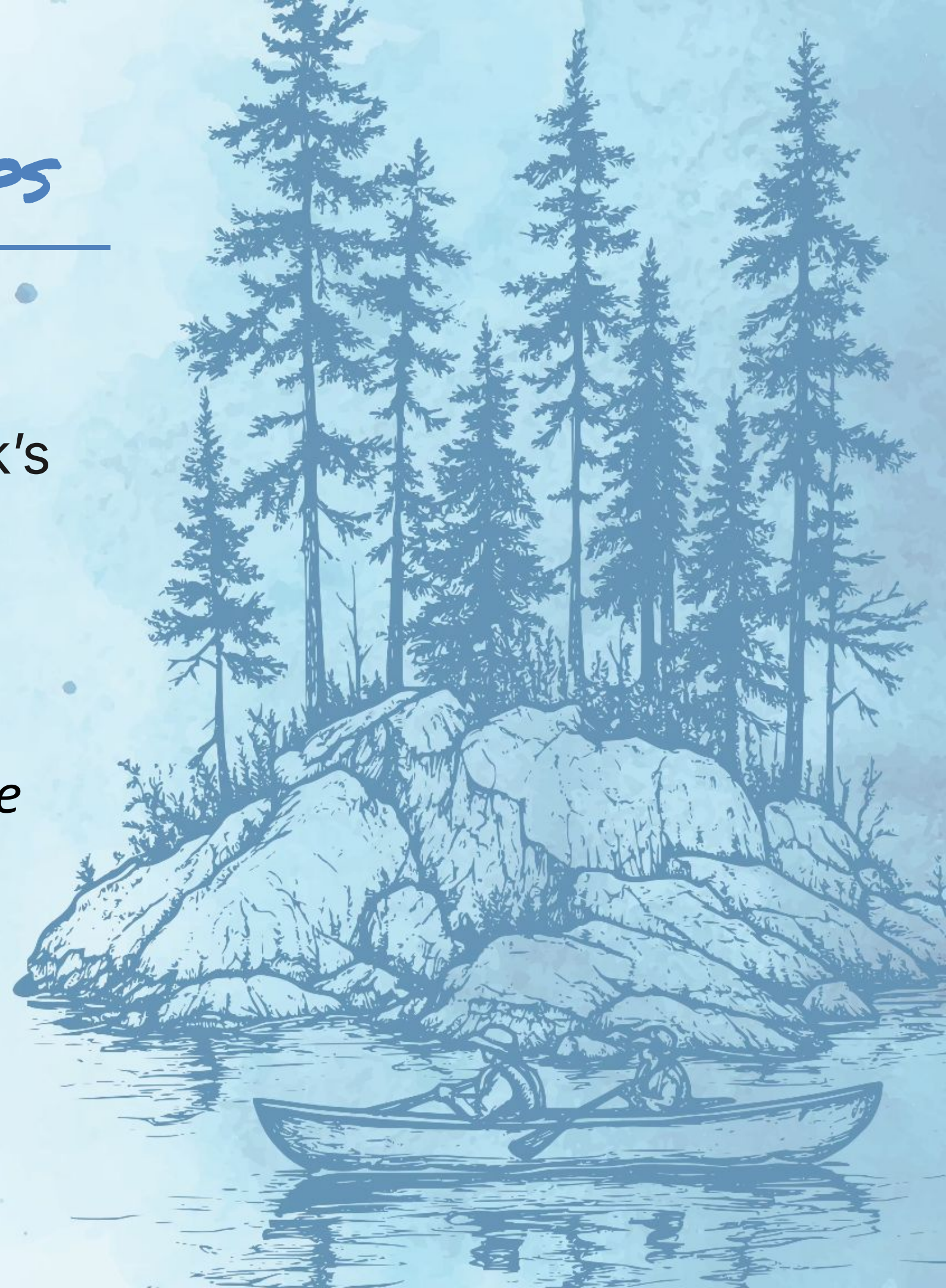
*\*Please **select one individual** to report back and summarize your break-out group's discussion for the larger group\**

Program Partners



Funded by the  
Government of Canada's Sustainable  
Development Goals Funding Program

Canada



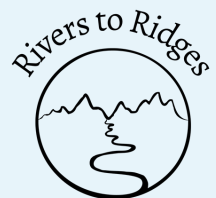


## FOR NEXT SESSION

---

- Complete Week 2 in the Project Workbook.
- Review **Session 3** content on the course page, including watching and reflecting on the story:
  - “Haeckel Hill Teaching”.
- Complete the first check-in survey, sent via email.

Program Partners



Funded by the  
Government of Canada's Sustainable  
Development Goals Funding Program

Canada







Land and Peoples  
Relationship Model



info@respectcareshare.ca  
www.respectcareshare.ca

Gunatchéesh Ho Ho (Teslin Tlingit)  
Shaw Nithan (Southern Tutchone)  
Shaw Than (Northern Tutchone)  
Mahsi Cho (Gwich'in; Tr'ondek Hwech'in)



Follow us on social media!



@ Land and Peoples Relationship Model



Funded by the  
Government of Canada's Sustainable  
Development Goals Funding Program

Program Partners

