

SESSION 6: BIODIVERSITY + LAND STEWARDSHIP

March 25, 2026

Elder Copper Joe Jack



Land and Peoples
Relationship Model



Funded by the
Government of Canada's Sustainable
Development Goals Funding Program

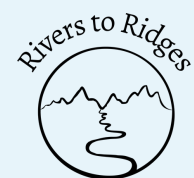
Program Partners

Canada

WELCOME AND OPENING FROM ELDER COPPER JACK



Program Partners



Funded by the
Government of Canada's Sustainable
Development Goals Funding Program



HOUSEKEEPING

Questions: Please always type your questions in the chat; we will note them down and either address them today or by email. We appreciate good questions, so please keep them coming.

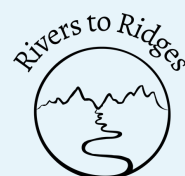
Mic & Camera: Please mute yourself, and feel free to turn off your camera during the teachings if you prefer. Please turn on your camera during discussion time, if you can!

Land Camp Application EXTENDED

<https://forms.gle/AZqwc5anUjoag9C36>



Program Partners



Funded by the
Government of Canada's Sustainable
Development Goals Funding Program

Canada



THE LPR MODEL IS CEREMONY

You are NOT required to use the model in any way for your project plan! If you wish to, however:

1. Bring on the LPR Model Team to facilitate the model.
2. Use our services as guidance (Copper could help select and support a facilitator, for example).
3. If using/facilitating the model independently, use it as a whole, without cherry picking components.

**2 & 3: LPR Model Team is not responsible for the outcome of externally facilitated processes.*

Program Partners



Funded by the
Government of Canada's Sustainable
Development Goals Funding Program

Canada



SESSION FLOW

60 MINS – Welcome and teachings from Elder Copper

10 MINS – Body Break

25 MINS – Group discussion

25 MINS – Q&A, closing thoughts from Elder Copper



Program Partners



Funded by the
Government of Canada's Sustainable
Development Goals Funding Program

Canada



BIODIVERSITY + LAND STEWARDSHIP

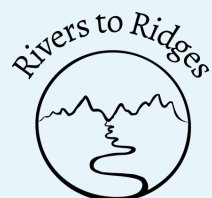
Can you unpack some of the teachings about

- biodiversity
- life on land
- land stewardship

woven into this week's stories (1. tree messages - leaves and the spruce, 2. Copper Jack & the wolves)?

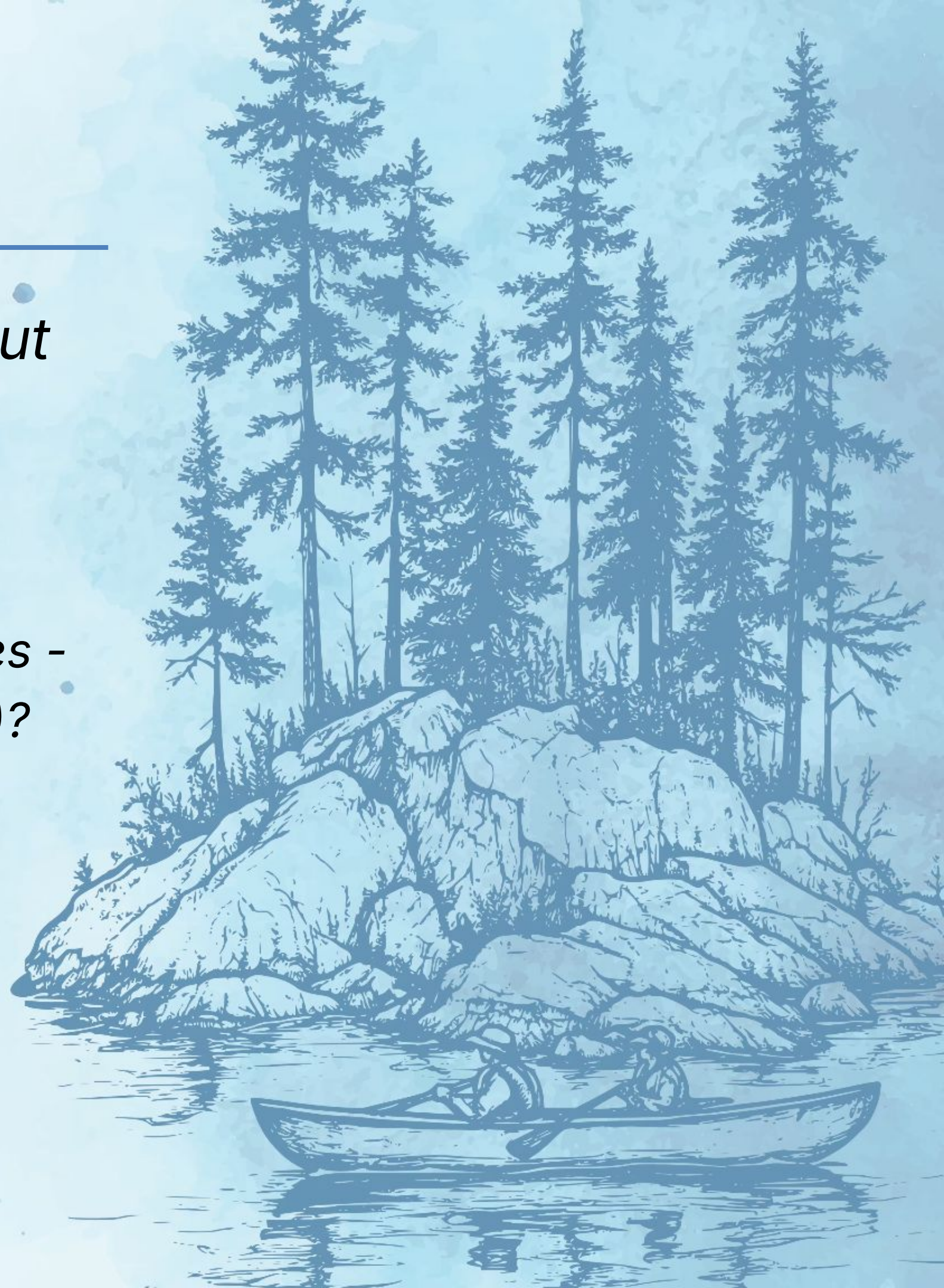
- responsibility
- reciprocity
- obligation - future generations

Program Partners



Funded by the
Government of Canada's Sustainable
Development Goals Funding Program

Canada

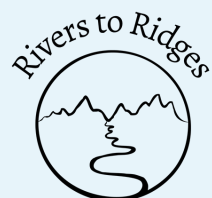


BIODIVERSITY + LAND STEWARDSHIP

What does land stewardship look like for you?

- Get to know the Land that you're on
- The whiskey jacks at Annie Lake (share video)
- Honouring your obligation and responsibility

Program Partners



Funded by the
Government of Canada's Sustainable
Development Goals Funding Program

Canada

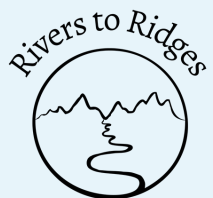


BIODIVERSITY + LAND STEWARDSHIP

How does the Land, and your relationship with the Land, shape your identity?

- By being on the Land, the Land will teach you, impacting your values and principles
- Prepare yourself to begin to communicate with the Land
- The more you learn to communicate with the Land, the more the Land will communicate with you and teach you

Program Partners



Funded by the
Government of Canada's Sustainable
Development Goals Funding Program

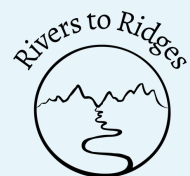
Canada



10-MIN BODY BREAK



Program Partners



Funded by the
Government of Canada's Sustainable
Development Goals Funding Program

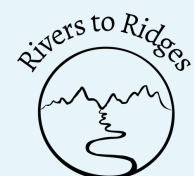


GROUP DISCUSSION

Together as a group, we will take **25 minutes** to discuss the question:

- *What does land stewardship look like for you? (connection, relationship, and obligation between yourself and No Voice)*

Program Partners



Funded by the
Government of Canada's Sustainable
Development Goals Funding Program

Canada



FOR NEXT SESSION

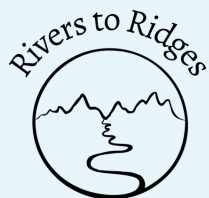
- Complete **Week 6** in the Project Workbook.
- Review **Session 7** content on the course page, including watching and reflecting on the stories:
 - “Messages from the No Voice”
 - “Model Breakdown video”

Land Camp Application EXTENDED

Application QR Code here:



Program Partners



Funded by the
Government of Canada's Sustainable
Development Goals Funding Program

Canada 





Land and Peoples
Relationship Model



info@respectcareshare.ca
www.respectcareshare.ca

Gunatchéesh Ho Ho (Teslin Tlingit)
Shaw Nithan (Southern Tutchone)
Shaw Than (Northern Tutchone)
Mahsi Cho (Gwich'in; Tr'ondek Hwech'in)



Follow us on social media!



@ Land and Peoples Relationship Model



Funded by the
Government of Canada's Sustainable
Development Goals Funding Program

Program Partners

