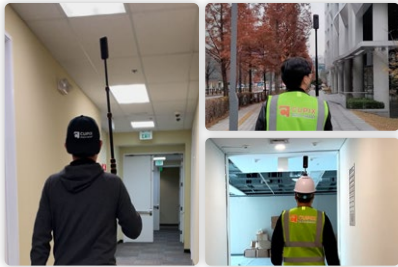




Turn 360° Video into Spatial Intelligence

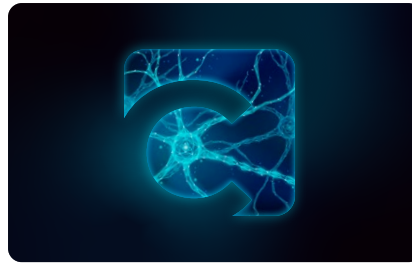
Capture

Transform 360° videos into complete 3D maps anyone can navigate.



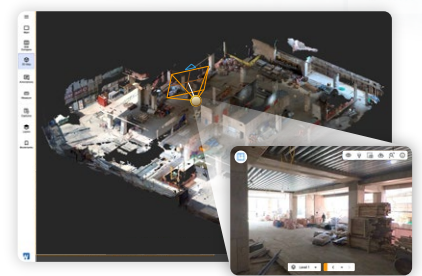
Intelligence

AI-engine generates and analyzes data to deliver insights at every level.



Connect

Universal access for every stakeholder from anywhere.



Address Every Phase, Solve Every Problem

From planning to operations, Cupix addresses industry-wide challenges and streamlines workflows:

Planning & Design

Lack of site information leads to costly design changes.

Cupix provides comprehensive 3D documentation of sites for informed planning.

Site Survey | RFP Documentation | Design Validation

Construction

98% of projects suffer cost overruns and 77% finish late.

Cupix delivers automated progress tracking to pinpoint delays.

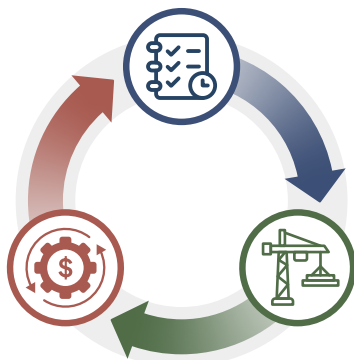
Progress Tracking | BIM Verification | Quality Control

Operation

Incomplete documentation leads to inefficient maintenance.

Cupix ensures instant access to complete spatial history.

Asset Management | Remote Inspection | As-Built Verification



“Caught a £150,000 wall placement error immediately with 360° capture that tape measures missed”



Seán McKirdy
RB Plant Construction



Scan to Read Story ▶



“We went from 3 hours/week for creating field progress reports to 20 minutes with 360° capture”



Breanne Hanson
Senior Engineer



Scan to Read Story ▶



Transform Sites with Spatial Intelligence

From 360° capture to analysis, here's how Cupix transforms your workflow:

Comprehensive documentation

"Your site's complete story in 3D over time"

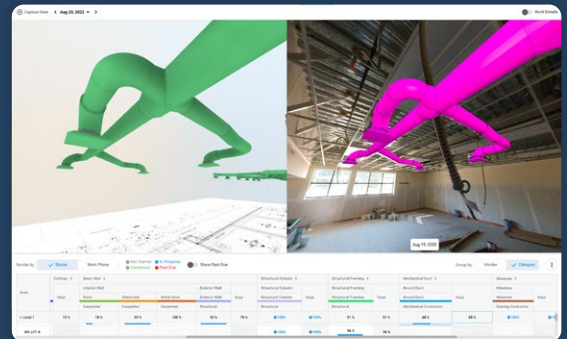
Turn simple 360° videos into rich digital records that show how your project changes over time. Snap photos with your phone and record voice notes while walking – everything gets automatically tagged to exact locations. Never lose track of what happened where and when.



Automated Progress Tracking

"See What's Built vs. What's Designed"

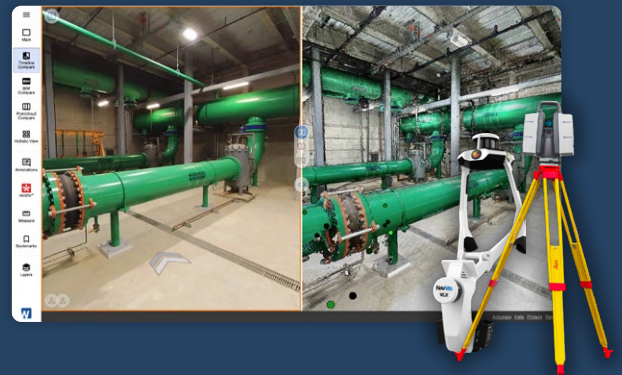
Compare your actual site against BIM data and schedules. Spot construction errors and delays before they become expensive problems. Get automatic progress reports showing exactly where reality matches design – no manual checking required.



All-in-One Spatial Hub

"All Your Project Data, Finally in One Place"

Stop juggling different apps for laser scans, drone photos, BIM drawings, and site photos. Everything connects in one platform with perfect spatial alignment. Your team sees the complete picture, makes faster decisions, eliminates confusion.



Transform Sites with Spatial Intelligence

Cupix integrates with the platforms you already use, organized by project stage:

BIM Tools



Project Management



Reality Capture



Geographic Information

