

# Heights Life

A COMMUNITY MAGAZINE  
La Habra Heights Improvement Association  
Serving the Heights since 1939 • December 2025

## Morning With Santa

See page 8





*To all our neighbors in La Habra Heights,*

As the holiday season arrives, my family and I just wanted to take a moment to send you a little warmth and a whole lot of good wishes. From our family to yours, we hope your holidays are filled with joy, laughter, and the people who mean the most.

These photos are from a trip we took in early November to Minnesota — we visited family, caught a Ducks vs. Wild game, and even squeezed in a Vikings game. It was cold... but the memories were worth every frozen finger.

*Wishing you and your loved ones a wonderful  
Holiday Season and a happy, healthy New Year.*

*Warmly,  
The Fernandez Family*



**NEXTMOVE**  
REAL ESTATE



# MAYOR'S CORNER

John Pespisa



As we enter the holiday season in La Habra Heights, I want to extend warm wishes to all our residents. This time of year brings celebration, reflection, and the joy of gathering with friends and family. It also brings unique seasonal hazards that we should all keep in mind—especially when it comes to the safety of our pets and animals.

## Holiday Safety Reminders

Decorations, lighting, and busy households all increase the chance of accidents. Simple precautions can make a meaningful difference:

- Inspect light strands and cords for damage, and avoid overloading electrical outlets.
- Keep flammable décor such as trees, wreaths, and garlands away from heat sources.
- Never leave candles unattended—consider using battery-operated LED candles as a safer option.
- If you're traveling for the holidays, secure your home and ask a trusted neighbor to keep an eye out while you're away.

## Pet and Animal Safety

Many of our homes—and our equestrian properties—include cherished pets and livestock that may be more vulnerable during the holidays. Increased activity, unfamiliar noises, and new decorations can create stress or hazards. Be aware of these holiday dangers to animals:

- **Toxic holiday plants:** Poinsettias, mistletoe, holly berries, lilies, and amaryllis can be harmful or poisonous to dogs, cats, and livestock if ingested. Keep these plants well out of reach or consider pet-safe alternatives.
- **Food hazards:** Chocolate, grapes and raisins, caffeine, alcohol, xylitol (in some sugar-free foods), and rich holiday leftovers can be dangerous for pets.
- **Electrical cords and décor:** Curious pets may chew on cords or ingest ribbons and ornaments, which can cause serious injury.
- **Noise sensitivity:** Holiday gatherings or unexpected fireworks can frighten animals. Provide secure, quiet spaces for pets, and ensure horses and other large animals are safely contained.

A bit of extra awareness goes a long way in keeping all members of your household—two- and four-legged—safe and comfortable.

## Fire Engine Dedication Ceremony

I'm pleased to share an important milestone for our city. We recently held the dedication ceremony for our new fire engine, made possible through the support of State Senator Bob Archuleta. His commitment, partnership, and patience throughout the lengthy procurement process were instrumental in bringing this life-saving resource to our community. Special thanks go to our great city staff and fire department for making this a memorable event! Please see details and photos on pages 6 and 7.

## Closing Thoughts

As we celebrate the holidays, let's take care of one another, our homes, and our animals. With a few proactive steps, we can all enjoy a safe, peaceful, and joyful season.

—John Pespisa



Gil Taylor



## PRESIDENT'S PEN

We had the biggest turnout ever for our annual *Morning With Santa* party at The Park gym on December 6! A gang of excited kids, parents and grandparents were waiting to greet Santa when he arrived in our big, new La Habra Heights fire engine, and he then led them into the gym where he passed out goodies, listened to kids' requests and posed for many photos (see page 8).

LHHIA board member Diana Taylor was chairperson for the event, and a great team of volunteers did the work (below).



## LHHIA membership dues

At this time of year, we remind you about joining LHHIA or renewing your membership, and we've included an envelope in this issue to make it easier for you to mail your check. You can also pay online at [lhhia.com](http://lhhia.com). Either way, we really appreciate your support for our organization that has been serving the people of the Heights for 86 years. See more about membership on page 4. On page 5, we once again recognize our generous *Premium Members*.

We don't publish *Heights Life* in January, so let me take this opportunity to wish you and yours the happiest of holidays and a great new year. Join us for a full slate of LHHIA activities in 2026!

—Gil Taylor

## La Habra Heights Improvement Association Fiscal Year-end Report: 2024-2025

### Assets

Advertising.....	\$ 25,204.00
Membership Dues.....	44,175.00
Fire Department Donations.....	21,700.00
Donations.....	24,273.00
<b>Total Revenue.....</b>	<b>\$115,352.00</b>

### Liabilities

<i>Heights Life</i> magazine.....	\$43,080.09
Events.....	23,210.87
Fire Department Donations.....	32,885.70
Miscellaneous Expenses.....	6,897.43
<b>Total Liabilities.....</b>	<b>\$106,074.09</b>
<b>Net Assets.....</b>	<b>\$ 9,277.91</b>



# Please join LHHIA or renew membership

We cordially invite you to become a member of La Habra Heights Improvement Association or to renew your LHHIA membership—with our sincere thanks.

Founded in 1939, LHHIA is a 501(c)(3) independent, all-volunteer charitable organization that is eligible to receive tax-deductible donations in accordance with IRS Section 170.

LHHIA is *not* part of the City of La Habra Heights and receives no city funding. We rely solely on the support of our members and sponsors to help pay for:



- **Heights Life magazine**, which spotlights community events and residents and provides articles pertinent to our rural lifestyle. We rely on your dues to help with publishing and mailing costs (which have risen considerably) so that we can produce 11 issues each year. *Heights Life* has been an integral part of the Heights since 1949.

- **Music in The Park summer concerts:**

We hold these well-attended concerts on Wednesday evenings during the summer at our beautiful La Habra Heights city park. Thanks to the generosity of our members and sponsors, we provide an entertaining opportunity for our community to gather, listen to good music, dance, picnic and spend quality time together in a lovely rural setting.



- **Easter Egg Hunt:** Held annually at The Park, this popular event features egg hunts for three different age groups, free pony rides, a petting zoo, face painting, photos with the Easter bunny and prizes for golden egg winners.

- **Halloween Haunt:** Each October 31, our community volunteers transform the gym at The Park into “La Haunted Heights” so that kids can enjoy a fun, safe Halloween with our trick-or-treat alley, games, events and refreshments. We’ve been “haunting” since 1980! Bring your children or grandchildren for a *spooktacular* evening!



- **Morning With Santa:** Every December, we begin celebrating the Christmas season in La Habra Heights with our Morning With Santa event that features photos with Santa Claus and holiday crafts, games, music and goodies. Bring the whole family for a morning of holiday fun!



- **Community Yard Sale:** This LHHIA event, held periodically at The Park, has proven very popular, with many sales booths offering a wide variety of used goods, as well as crafts. Watch

*Heights Life* for details about our next Community Yard Sale.

- **Special community programs and projects:** LHHIA sponsors Welcome Wagon and our annual Photo Contest (we publish the winning shots in *Heights Life*). As our name implies, over the years LHHIA has regularly managed and funded a variety of community improvement projects, including:

- Removing dead trees throughout the Heights and providing new trees and shrubs in a major, multi-year “re-greening” program for which LHHIA received a special commendation from the Los Angeles County Board of Supervisors.
- Building and maintaining the gazebo that serves as a bandstand for Music in The Park and other events.
- Helping upgrade and maintain the horse arena at The Park.
- Providing and maintaining the original marquee sign on Hacienda Road that publicizes community events.
- Providing picnic tables, benches, railings and pet receptacles to make The Park a pleasant place for community gatherings.
- Providing numerous flags for City Hall and The Park.
- Extensive painting and repairs at the gym at The Park, including installing new fireproof exterior doors.
- Donations to the LHH Fire Department for and providing new life-saving equipment, as well as kitchen utensils and supplies.
- LHHIA is currently participating in fund-raising efforts to help our Fire Department upgrade its equipment and make much-needed repairs to its facilities. Watch *Heights Life* for details—and please help.

## LHHIA membership levels

LHHIA offers the following annual membership levels:

- **Regular** Membership: \$35 per year
- **Bronze** Premium Membership: \$75 per year
- **Silver** Premium Membership: \$100 per year
- **Gold** Premium Membership: \$250 per year
- **Platinum** Premium Membership: \$500 per year
- **Diamond** Premium Membership: \$1,000 or more per year
- **Sapphire** Premium Membership: \$5,000 or more per year

We’re eager to make all our residents aware of the important role that La Habra Heights Improvement Association continues to play in improving the quality of life in our unique rural community. We cordially welcome you to get involved in our LHHIA activities—contact any of our board members, listed on the back of this magazine, or e-mail [MemberLHHIA@gmail.com](mailto:MemberLHHIA@gmail.com).

You’ll find an envelope in this magazine. Please use it to mail your check to join or to renew your membership. You can also pay online anytime at [lhbha.org](http://lhbha.org).



# Premium Members

Each year in *Heights Life* we offer this special recognition to those who have purchased our LHHIA Premium Memberships. We sincerely thank all these Premium Members, and we invite you to join them (for details, please see "Become a Member" on page 20).

## PREMIUM MEMBERSHIP LEVELS:

*Sapphire*—\$5,000+, *Diamond*—\$1,000+,

*Platinum*—\$500, *Gold*—\$250,

*Silver*—\$100, *Bronze*—\$75.

Regular LHHIA membership is \$35.

## SAPPHIRE

JAMES & PRICILLA KOURY

## DIAMOND

BRIAN BERGMAN

ESTHER & RAFAEL FERNANDEZ

MIKE HIGGINS & PAM McVICAR

KENT & DOROTHY ROBERTS

## PLATINUM

PHILLIP & JACKIE BOR

MICHAEL & CHRISTINE GALLAGHER

SONDRA & JOHN HEINE

DR. PAUL & CYNTHIA JACOBSEN

DENNIS & PHYLLIS LAHERTY

AMY & TONY PEREZ

## GOLD

KURT ANDEREGG

LAYNE & KAREN BAROLDI

RICHARD & PEGGY CASLOW

KEITH & MARY FORSTER

LISA & RANDALL HALL

MARIALUZ SEVILLA-HERRERA & JOSE HERRERA

BRIAN & LAURA HESS

CURTIS & LYNN KELLEY

HENG LI & THEODORE KING

KWAN LEE

RUDY & MONIQUE MARTINEZ

JONATHAN & MEGAN MCKEMY

ROSS & ANGELA OWEN

JOHN & CAROLINE PESPISA

JAMES & PAULINE PON

HARRIETT PROCTOR

JOSE & CYNTHIA SALAZAR

JOHN, LILY, SARA & SUZY SARAGOSA

MARIE & MIKE SCHEIERN

JOHN DOMINGUEZ & R. KENT SHERANIAN

GUADALUPE HOXIE & BRIAN SHISHIDO

JOHN & MARGUERITE SMITH

## SILVER

NANCY AMARILLAS

DANIEL & ECATARINA ARROYAS

J. RICHARD & ANNETTE ATWOOD

JANET AVERILL

GEORGE & CHRISTINA BAKIS

BILL & ROWENA BEINBRECH

ALAN & ELIZABETH BLOMCKER

WALT & CAROLYN BOEHRINGER

C. SCHAFFER BOHLEN

TITUS & DIANA BOTEZAN

RICK & SUSAN BROOKS

ELIZABETH & KENT BURRELL

RANDY & JERRY BUE

WADE CALMER

STAN & ARDIS CARROLL

XIAOYING ZHUO & YU CHEN

YVETTE MUNOZ & ESPARZA COLE

BRAD & VICKI COOKE

CAREY DAVID

TONY & RITA DONATO

GARY & SHEILA DRESSEN

CARLOS FANUNAL

GARRY WHITE & SUSAN GANDY

RAMON & SYLVIA GARCIPARRA

JAMES & LAURIE GEIGER

DARLYN MILLER-GEISER & NORM GEISER

DINESH & USHA GHIYA

CINDIE & CHET GRISSO

MI H GU

MONICA GUNNS

MATTHEW & GRACE HANSON

CHRISTOPHER & MELISSA HARPER

GRACIA & NOEL HAWORTH

ROBERT & MAYUMI HIGA

DONALD & PATRICIA HOLM

CHARLENE WONG & JIAN HUANG

CHRIS JOHNSON

CONNIE REMINGTON JOHNSON

MICHAEL & LEAH KANTOR

LARRY & JANE KELLEY

MICHELLE & ROBBIE KELTERER

MARTHA & JAMES KLASSEN

REBECCA & MICHAEL KLAUSMAN

DAVID & SUSAN KLINGER

JOY & DAVID LANFRANCHI

KATHY LECLAIR

ROMALYN LITCHFIELD

WILLIAM & SANDRA LOVE

VIRGINIA T. MACAULAY

JOSEPH & GLORIA MCNEIL

GENE & RITA MECHERIKOFF

JAMES & MANYA METCHKOFF

DAVID & KATHRYN NOLTE

ROBERT & JANEEN PARMINTER

PETER & LESLIE PASZTERKO

JASON PAULUS

MARK, VART & CAROL PERUMEAN

DON & ELOISE PHILLIPS

ED & NACHI PI

CATHERINE RICHERT

CRAIG & DEBBIE ROBERSON

LAWRENCE ROHLFING

LAURA & MICHAEL ROSSONI

PAUL & KIM ROWELL

CELINA LUNG & WILLIAM RUSHING

ROBERT & LINDA RUTKOWSKI

GEORGE & DIANA SATTLER

ELLIE & GREG SAVEE

RENKE & CHRISTA SCHROEDER

GLENN & FLORETTA SHEPPARD

RALPH & MARY SHIMER

ELISA & THOMAS SHORT

STEVE & VIVIAN SIROTA

VICKI HENNESSEY & DON SKALA

DAN & SANDA SLATER

DONALD & DIANNA SMITH

DAVID & CHRISTINE STANLEY

JOHN & KATHY STEELE

DAN & BARBARA STRACNER

DANIEL & OLGA TORRES

SUSAN & STEPHEN TROY

MARY & HAROLD TUCK

JERRY VIGLIOTTI

ALEXANDER & VIVIAN VILLANUEVA

DENNIS & TERESA VINOPAL

LINDA LETZIA VOLSKI

DAVID & SIRI WHITESEL

SCOTT & LISA WYLDE

MARTA YACKEY

WEL TI, LI & ALISSA YIN

## BRONZE

RUTH BIBB

ROBERT & TRUDY BOHR

BIN & GUO CHEN

CHRIS & SUMMER CONTES

S. CORTEZ

RANDALL & CHERIE FERGUSON

ROXANE REQUIO & DOUGLAS FRANCIS

ARTURO & AMY FRANZ

GREG & BARBARA GUNTER

LEONARD & PHOENIX HSU

NOOR KHAN

KATHY KINGETT

FRED KORNOFF

MICHAEL & ANGELA LASCARI

RAYMOND & DIANNA LEW

GEORGE & ARLENE NORSWORTHY

RUSSELL & PATTY O'DALY

JEFF & EVA ONG-SIONG

RANDY & CATHERINE STEELE

YVONNE SANCHEZ & DON TILLEY

DIANE & RICHARD TOSCANO

SPRUSTON TRUST

SCOTT WALGREN

SHARON YANG

ROBERTO ZAMORA





# Fire Engine Dedication



The community gathered at The Park on November 8 to dedicate our new Type 1 fire engine and to thank California State Senator Bob Archuleta (District 30) for securing a state grant of more than \$1 million to purchase and outfit the vehicle.

In their speeches during the ceremony, Mayor John Pespisa, City Manager Rafferty Wooldridge and Fire Chief Edward Martin all expressed the gratitude of the City of La Habra Heights to the senator.

During his remarks, Senator Archuleta commended the La Habra Heights Fire Department and described it as “a mini fire academy” that provides valuable training and experience to those who aspire to fire-service careers. He said that such training benefits many California communities.

The senator encouraged Fire Chief Martin “to make a list” for him of other equipment and improvements needed to upgrade the LHH Fire Department.

Our fire department is not the only one to benefit from the senator’s efforts. In October, his office announced that he had secured a grant of \$1.5 million to replace an outdated fire station in Whittier, as well as a similar grant for a new brush fire station in Montebello.

After the ceremony, the senator joined those in attendance to watch demonstrations by fire department personnel, including hose-deployment tactics used to fight wildland fires and using the Jaws of Life® to remove a door from a wrecked car, a method for extricating trapped passengers.

Senator Archuleta also enjoyed interacting with “junior firefighters” during target practice with a fire hose.



*Our new Pierce Type 1 fire engine is a heavy-duty vehicle used to fight fires in urban, rural and suburban areas. The truck features a powerful pump with a high gallon-per-minute output, large water and hose capacities and long, expandable ladders. Mayor John Pespisa observed: “This new engine strengthens our emergency response capability and represents a significant investment in the safety of La Habra Heights residents.”*







*Kids had a great time playing firefighter—and so did Senator Archuleta!*



*Senator Bob Archuleta secured a \$1 million grant used to purchase our new fire engine.*



Ceremony speakers were (from top) Senator Bob Archuleta, LHH Mayor John Pespisa, City Manager Rafferty Wooldridge and Fire Chief Edward Martin.



*"Jaws of Life" demonstration.*



*Firefighters demonstrated hose deployment techniques that would be used to fight a wildland fire.*



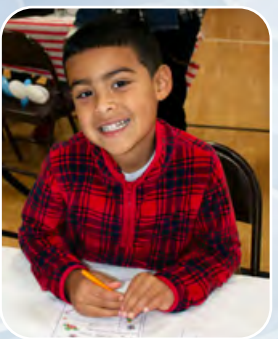
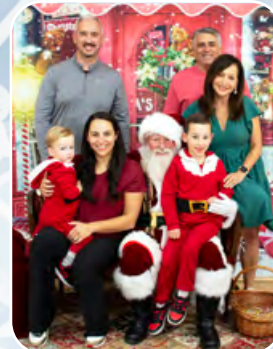
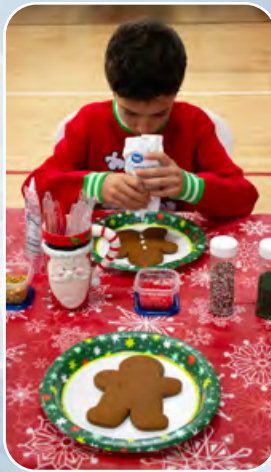




# Morning With Santa











Poinsettias

# Garden Plot

By **Beverley Lepak**  
*Horticulturalist & Landscape Consultant*

**T**he winter solstice (first day of winter), arrives on Sunday, December 21, at 7:30 a.m. Even with longer nights and more of a chill in the air, gardens could use a bit of sprucing up. Decorate your entranceway with poinsettias, which are available in a delightful array of colors. Kids could have fun collecting pine cones and evergreens to make wreaths and decorative swags.



## **Traditional holiday plants & blooms**

In addition to poinsettias, Christmas trees, amaryllis, Christmas cactus, holly, mistletoe and paper whites are popular holiday plants. As soon as you bring a live Christmas tree home, cut a half-inch off the trunk bottom and put the trunk in water. Place the tree and your other holiday plants a safe distance away from fireplaces and heat vents to keep them from drying out.

Most holiday plants do well indoors for awhile, but move them outdoors when the new year arrives. Paper whites (narcissus) have a rather strong fragrance, so you might want to keep them outdoors so they won't overwhelm your guests. Mistletoe is poisonous, so hang it high so pets and children can't reach it. Mistletoe native to the U.S. is not as dangerous as European species, but it can still be harmful if ingested.

## **Cold-season blooms**

While we don't see lovely snow-covered trees in the Heights, our fortunate compensation is that we can have blooms all year long—and help provide food for migrating birds and insects. Plant cineraria, cyclamen, dianthus, Iceland poppies, pansies, primrose and viola—all of which can take some frost. Also plant any bulbs (e.g., tulips) left chilling in the refrigerator.

## **Bare root season**

Winter in La Habra Heights is bare root season for planting certain trees, shrubs, vines, berry brambles and even some vegetables. Bare roots are trees and plants harvested during their dormant season and sold without a container. Soil, leaves and buds have been removed, leaving only bare roots, stalks and canes. Roots are packed in wet sawdust, hay or other materials and wrapped in plastic to keep them moist and protect them from freezing. It's more cost-effective for growers to produce bare roots than to put such plants in greenhouses or to keep dormant plants in containers with water that can freeze and kill them. Because bare roots are less costly both to maintain and ship, they're a win-win for growers *and* customers.

Do your research and be sure to purchase only bare roots that will do well with our warm Heights climate, low rainfall and soil conditions (e.g., pH levels). When your bare roots arrive, check the packing and make sure roots are still moist and canes or branches are pliable.

**Planting bare roots:** Planting techniques vary among trees, shrubs and vines, so follow instructions that come with your bare roots (you can also find good "how-to" videos online).

A general rule for trees is to dig a hole two times the width and twice the depth of the roots. Fill the hole with water and allow it to completely drain into the soil. Soak the bare root ball in water for at least a couple of hours to rehydrate the roots—but not overnight.



Holly



Mistletoe



Paper-white  
(narcissus)



Christmas cactus



Place the root ball in the hole and gently separate the roots into a circular pattern for even anchorage and water distribution. Be sure to plant the root ball so that the top of the hole is at the *original soil level* (you'll be able to see the soil line from when the tree was harvested); placing a cane pole or straight stick across the hole can help. Backfill the hole with soil and amendments to the proper level. Water a couple of times while backfilling, allowing complete drainage each time. This will help compact the soil and improve surrounding hydration.

Depending on the size and sturdiness of the young tree, you may need to install stakes to keep it upright until it can stand on its own (*right*). Drive stakes into the ground outside the root circumference and secure the trunk with wire or twine cushioned with rubber or canvas, leaving room for future growth.

***Happy Holidays to everyone in the Heights!***



Cyclamen



Amaryllis



Cineraria



Primrose

Photos from Pixabay (from left): Sean van der Merwe & Jeno Szabo.

Photo: Mathias Bockel (Pixabay); illustration: Evi Richner (University of Wisconsin).

REPRESENTING SENATE DISTRICT 30



*Season's Greetings*

To La Habra Heights from Senator Bob Archuleta

WEBSITE-SD30.SENATE.CA.GOV - facebook.com/senatorbobarchuleta



# Three SuperMoons—lovely show in our dark skies!



**T**hree *consecutive* SuperMoons recently rose in our Heights sky: the “Harvest Moon” on October 7 (shown above from the west Heights), the “Beaver Moon” on November 5 and the “Cold Moon” on December 4. Those traditional names apply to any type of full Moon in those months, but this year, they were all SuperMoons—full Moons at or within 90 percent of perigee, the point in our Moon’s elliptical orbit when it’s closest to Earth. At perigee, the Moon is 221,474 miles away, and at apogee, the farthest point, it’s 252,731.4 miles from Earth (a difference of 31,263.4 miles).

The “Harvest Moon” (sometimes called the “Hunter’s Moon”) is a full Moon occurring closest to the autumnal equinox, the beginning of autumn when the day and night are equal, which was September 22 this year. This full Moon rises when harvest is underway and hunters are stocking up on game for winter. The “Beaver Moon” refers to the time when native people observed beavers busily preparing for chilly weather. The name “Cold Moon” is self-explanatory—it’s wintertime. If you missed these three SuperMoons, you’ll have another chance on January 4, 2026—that one (*four* in a row: a rare event!) will be the “Wolf Moon.” The only other SuperMoon in 2026 will occur on Christmas Eve.

A perigee SuperMoon appears about 14 percent larger and 30 percent brighter than a full Moon at apogee. But if you watch a SuperMoon when it just begins to rise over the horizon, it will probably appear much larger due to the so-called “Moon illusion,” a powerful optical effect that can be both breathtaking and baffling. The proximity of the Moon’s image to buildings, trees and other horizon features makes our brains perceive it as larger than when it’s high in the sky. In fact, the Moon on the horizon and the Moon high up are about the same size. The illusion can also occur when the setting Moon is just above the horizon, and the atmosphere can dramatically affect the color, turning the Moon yellow or even orange (the photo on the next page, taken in November, is similar to shots posted online by several Heights residents).

Humans have used phases of the moon to keep time for at least 30,000 years. In fact, the word “month” is derived from Moon, and many ancient civilizations divided the year into 12 lunar months (lunations) lasting 29.5 days each, with a year lasting 354.36707 days. The lunar calendar is still used in most Islamic countries, as well as in China, Korea, Vietnam, Thailand, India and Israel. However, different regions use different Moon phases to signal the beginning of new months, and those differences—as well as variances between lunar and solar cycles—require periodic “leap” adjustments.

Those supermoons were beautiful in our dark skies, and a number of residents posted nice photos online of the rising and setting Moon both when it was full and going through its phases. If you want to photograph the Moon, you’ll find that when the Moon isn’t full, you can often see craters and other surface features better, especially along the shadow edge.

This is a good time to remind you that La Habra Heights has a “dark skies” ordinance that protects our lovely night skylines by requiring residents to use only outdoor lighting that is subdued, shielded and directed downward to avoid interfering with our views of stars, planets, comets, galaxies and, of course, the Moon.





Moon images by Dan Stracner.

# Happy Holidays!

from La Habra Heights Improvement Association

## PLUMBING SERVICE YOU CAN COUNT ON

Proudly Servicing:

- Residential
- Commercial
- Emergency



5 STAR RATING



**562-365-8036** License 758929 [scottcoleplumbing.com](http://scottcoleplumbing.com)

## RURAL LIVING

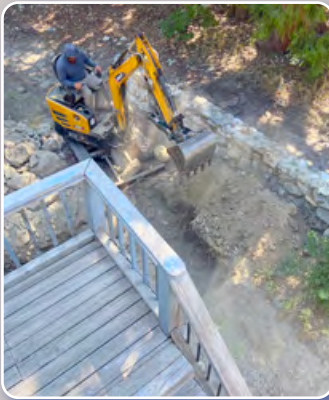
### LHH license plate frames on sale at City Hall for \$10 each

*Made in the USA of high-quality, die-cast metal, these attractive, sturdy frames are a great way to display your pride in our unique rural community.*

## LA HABRA HEIGHTS



# Three generations of plumbers servicing La Habra Heights...



**C**arl Cole Plumbing, founded in 1973 by my late father, had many satisfied customers in La Habra Heights, and so did my great-uncle Al Ramer. I learned the plumbing business from them, and now my family-owned company, **Scott Cole Plumbing**, is carrying on our more than 50-year legacy by providing the latest plumbing technologies and techniques to the Heights.

Our expert team is ready to help with all your plumbing jobs and problems both large and small, including:

- Repairing **septic systems** and restoring **seepage pits**—especially critical in the Heights. We'll help you avoid costly system breakdowns and keep your septic system working well for years to come.
- Water and gas **leak detection** and repairing and replacing **water mains** and **gas mains**.
- Repairing **slab leaks**.
- **Repiping**—whether it's a bathroom, kitchen or your whole house.
- **Total residential plumbing**, including emergency repairs and installing water heaters, sinks and toilets.

Whether you need us to specify and install new plumbing equipment or to repair your existing plumbing, we're ready to help. *Give us a call!*



## 562-365-8036

Call for a  
free estimate

# Scott Cole Plumbing



California License 758929 • Bonded & insured • [proplumber0101@gmail.com](mailto:proplumber0101@gmail.com)  
[scottcoleplumbing.com](http://scottcoleplumbing.com) • Check out our many five-star Google reviews!







# California Arborist

## WE ARE THE EXPERTS!

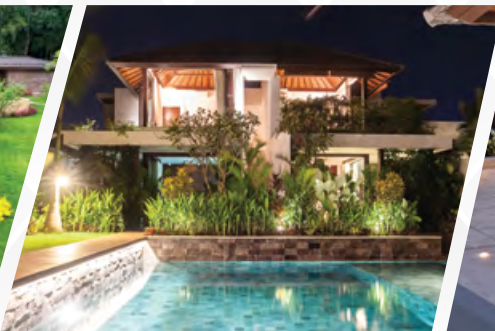


### WHO WE ARE?

**California Arborist** was created to balance the professional workmanship and expertise in the landscape, tree trimming, and construction industries that consumers can trust, while still making it cost-effective for a wide variety of customers and jobs that these industries bring.

### WE DO IT ALL!

- ✓ Tree Health Assessment & Maintenance
- ✓ Tree Planting, Trimming, and Removal
- ✓ Weed Abatement
- ✓ Custom Hardscape
- ✓ Landscape Design & Remodel
- ✓ Complete Pool & Remodel
- ✓ Brush Clearance & Fire Prevention
- ✓ High-Risk & **24hr Emergency Services**



**OSCA**  
OCCUPATIONAL SAFETY  
COUNCILS OF AMERICA



energy **API**

**TCIA**  
VOICE OF TREE CARE



Don't Wait, Call Today To Schedule Your

## FREE ESTIMATE

 **(562)698-3280**

STATE LICENSE #748668 • CTSP LICENSE #2177 • DPR LICENSE #140021

**GET IN TOUCH**



14068 Lambert Rd., Whittier, CA 90605



[www.californiaarborist.com](http://www.californiaarborist.com)





## FREE ESTIMATES SENIOR DISCOUNTS

- ARBORIST IT CONSULTATION •
- PROFESSIONAL TREE TRIMMING •
- PALMS SKINNED, TRIMMED & REMOVAL •
- POWER STUMP GRINDING •
- LACING, PRUNING, & THINNING •
- SOD & SEED LAWNS •
- SPRINKLER SYSTEMS •
- STONE WALKWAYS & PLANTERS •
- LOTS & HILLSIDE CLEANED •

## BRUSH CLEANING FOR FIRE REGULATION DON'T WAIT FOR FIRE SEASON!



FULLY INSURED & WORKERS COMP. LICENSE #949263  
SAT. & SUN. - 24 HOUR RESPONSE

**(562) 321-8074**



## Expert Septic & Sewer Service



- Septic tank pumping
- System design & installation
- Certification for real estate
- Full 24/7 service



**GOLDEN PENNY SANITATION INC.**

**626-208-7090**

(Call or text Alan)



## ANGELO PLUMBING

'DON'T CUSS—CALL US!'

RESIDENTIAL • COMMERCIAL • MUNICIPAL • INDUSTRIAL

- Septic tanks—pumping, repair and all-new installations
- Rooter service • Drain replacement • Copper repiping
- Expert electronic water and gas leak detection and repair
- Heating and air troubleshooting and repair, including certified backflow testing • Trenchless pipe replacement

SINCE 1949

Licensed  
& insured

License #261690

Cash, checks & major  
credit cards accepted

**866-687-8865**



## Quality Jet Rooter

Drain-cleaning specialists

Complete plumbing services

- Water & gas leak detection & repair • Pipe tracing
- In-line video inspection • High-tech water jetting
- Septic tank pumping, repairs & new installations

Cash, checks & major  
credit cards accepted

**562-693-1573**

Prompt emergency  
service available

## Caregiver with CPR training available

Great local references. Sadly, lost my Heights patient after 4 years. Expertise in bathing, dressing, feeding, exercising, walking patient (w/Dr approval), driving to appointments, shopping. OK with light housework. Speak English, Spanish. Call AMALIA: **951-335-1268**.



# Taking care of trees since 1983



- Trimming
- Topping
- Removal
- Stump grinding
- Fire risk management


Free estimates  
**562-237-4651**  
Call anytime




Psalm 1:3  
A FAMILY BUSINESS

## Goodman Tree Service


State Contractor License #696928



# Septic Tank Pumping



Serving La Habra Heights since 1959



## Robert's Liquid Disposal

14018 Carmenita Road  
Santa Fe Springs, CA 90670

**562-864-2953**

# NORWALK/LA MIRADA

## Plumbing Heating & Air Conditioning

### La Habra Heights RESIDENT

- HVAC Services
- Water Heaters
- Home Inspections
- Sewer Stoppages
- Re-piping

*Commercial and Residential*

**562-868-7777**

*Since 1958*

**laplumber.com**

# Eco-conscious Landscaping




Design & construction

*Let us create your dream yard!*



Installation & maintenance



Irrigation



Tree care



Quality & reliability

**AZURY LANDSCAPING, INC.**

Azury Landscaping, Inc.  
info@azurylandscaping.com  
**562-968-9811**

California Landscape Contractors Association





Service since  
**1986**

# WILLIAMS TREE SERVICE

P.O. Box 5557, Whittier, CA 90607-5557

**FREE ESTIMATES**

TRIMMING  
STUMP GRINDING  
PALMS  
INSURED  
COMMERCIAL



TOPPING REMOVAL  
GENERAL CLEAN-UPS  
FIREWOOD  
LICENSED  
RESIDENTIAL



Call Greg Williams

**(562) 692-8677**

Fax: (562) 698-4085

wtreedude@aol.com • State License #941245 • Bonded



**Visiting Angels**  
SENIOR HOMECARE BY ANGELS®

Experienced local senior care for total peace of mind.  
PROVIDING QUALITY SENIOR HOMECARE SINCE 2007

HYGIENE ASSISTANCE • LIGHT HOUSEKEEPING  
MEAL PREPARATION • ERRANDS & TRANSPORTATION  
JOYFUL COMPANIONSHIP • AMBULATION

562.947.5390  
HCO #194700936

14155 WHITTIER BLVD., WHITTIER, CA 90603  
FACEBOOK.COM/VISITINGANGELSWHITTIER

**NORWALK/LA MIRADA**  
Plumbing  
Heating & Air Conditioning

(800) 238-5558  
(562) 646-1222  
www.laplumber.com  
HEIGHTS RESIDENT  
Quality Service Since 1958

**XCEL ELECTRIC**  
Residential • Commercial • Industrial  
Heights Resident • Free Estimate • Lic# C10-911443  
**TIM BAGDONOFF • (562) 318-4651**

**ALL CITY SERVICES**  
**Plumbing & Electrical Home Services**

Licensed and insured  
La Habra Heights resident  
Quality service at half the cost

**562-329-7886**

**Gateway Cities Krav Maga**  
2430 W. Whittier Blvd, La Habra, CA 90631  
562.266.1595  
gatewaycitieskravmaga.com

\* f i y

**COMPACT TRACTOR**

STARTING AT  
**\$150**  
PER HOUR

With operator & attachments • Over 40-year Heights resident  
..... Call Tom at **562-708-2665** .....

**SEE THRU WINDOW CLEANING**  
Residential • Commercial • Pressure Washing  
**Joel Innamorato • 562-587-7844**  
Mobile: 562-587-7844

Professional  
Window Cleaning Service

**Fido Come Home**  
Report lost or found pets  
**562-694-8090**



# JAN FIORE

Your Neighborhood's Most Chosen Realtor® Since 1999!

**\$571M+**

Total Sales  
Volume

**716+**

Homes  
Total Sold

**Since 1999**

Happy Holidays! We are grateful for our valued clients and appreciate the trust you place in us. Wishing you a joyful season and a successful year ahead.



## JAN FIORE

Realtor® | DRE #01262942

**562.522.9620**

Jan@JanFiore.com | www.JanFiore.com



**COLDWELL BANKER  
DIAMOND**



## Community Events

- December 8** City Council meeting: 6:30 p.m. at City Hall.  
**December 18** Emergency Preparedness: 6 p.m. at City Hall.  
**December 23** Planning Commission: 6:30 p.m. at City Hall.  
**December 24** Roads Advisory meeting: 6:30 p.m. at City Hall.  
**December 25** **MERRY CHRISTMAS!** City Hall closed.  
**January 1** **HAPPY NEW YEAR!** City Hall closed.  
**January 12** City Council meeting: 6:30 p.m. at City Hall.



P.O. Box 241  
 La Habra, CA 90631

## Emergency & City Numbers

<b>EMERGENCY</b> .....	<b>911</b>
CITY HALL: <a href="http://lhhcity.org">lhhcity.org</a> .....	562-694-6302
SHERIFF'S DEPARTMENT.....	562-694-5923 or 626-330-3322
RANGER SERVICES.....	562-698-1446
FIRE DEPARTMENT (non-emergency).....	562-694-8283
LA HABRA HEIGHTS COUNTY WATER DISTRICT.....	562-697-6769
LOS ANGELES COUNTY ANIMAL CONTROL.....	562-940-6898
FIDO COME HOME (report lost and found pets).....	562-694-8090
WARE DISPOSAL.....	877-714-9273

## La Habra Heights City Council

BRIAN BERGMAN.....	562-690-5047	Briansbergman@hotmail.com
CAROL ENGELHARDT.....	562-217-0983	clengelhardt1@yahoo.com
JOHN PESPIA.....	562-694-1371	Jmp100@roadrunner.com
GREG STEFFLRE.....	213-324-0809	gregstefflre@gmail.com
NORM ZEZULA.....	562-697-9914	normzezulaLhh@gmail.com

## Community Service Opportunities

BSA TROOP 1814 • 951-538-8377 or cookmaster251@yahoo.com  
 BSA TROOP 793 (female troop) • Call Carl Diamond at 562-706-8279  
 or email Carl@cdiamond.org  
 CUB SCOUT PACK 817 • 562-267-9022 • lahbrapack817@gmail.com  
 • Facebook.com/pack817  
 BOYS AND GIRLS CLUB • 562-694-1805 • ourchildrensfuture.org  
 HABITAT AUTHORITY • habitatauthority.org/waystohelp  
 MEALS ON WHEELS • 562-451-9047 • LaHabraMealsonWheels.org  
 VCC: THE GARY CENTER • 562-264-6000 • vccthegarycenter.org



## LHH Fire Report

OCTOBER 2025

Advanced life-support calls: 22 (16 in LHH, 6 in LA County), Basic life-support calls: 22 (13 in LHH, 9 in LA County), Public assist: 8 (7 in LHH, 1 in LA County), Fire calls: 7 (4 in LHH, 3 in LA County), Traffic collisions: 6 (4 in LHH, 2 in LA County), "LHH Island": 3, Automatic aid into LA County: 21.

**Total calls: 68**



## Sheriff's Report

OCTOBER 2025

Aggravated assault on child: 1, Grand theft: 1, Vehicle burglary: 2, Petty theft: 2, Elder abuse: 1, Persons dead: 2, Mentally ill person: 1, Vehicle impounded: 1, Traffic accidents: 4, Miscellaneous felonies: 1, Miscellaneous misdemeanors: 1.

**Total incidents: 17**



## BOARD of DIRECTORS • [lhhia.com](http://lhhia.com)

Gil Taylor, President (LHHIAPresident@gmail.com).....	562-322-3453
Lynn Kelley, Vice President, Halloween Haunt & Yard Sale Co-Chairperson (lynnkelley91@gmail.com).....	562-371-4603
Pam McVicar, Secretary & Membership Chairperson (Memberlhhia@gmail.com).....	714-504-3415
Diana Garcia Taylor, Treasurer & Morning With Santa Chairperson (Diana@myjesmar.com).....	562-577-4802
Susan Brooks, Easter Egg Hunt Chairperson & Yard Sale Co-Chairperson (susanbrooks827@gmail.com).....	714-222-5091
Angela Owen, Halloween Haunt Co-Chairperson & Yard Sale Co-Chairperson (arowen3@yahoo.com).....	562-201-1119
Carolyn Boehringer, Advertising Co-Chairperson.....	310-849-4582
Monica Gunns, Advertising Co-Chairperson.....	714-412-2667
Amy Perez, Director (armacvean@yahoo.com).....	562-631-1208
Rita Donato, Director (rwdonato@gmail.com).....	626-824-7363

*Heights Life*: heightslifeeditor@gmail.com

Editors: Dan & Barbara Stracner.....562-632-0691

For information about advertising in *Heights Life*, visit [lhhia.org](http://lhhia.org) or call:

Advertising Co-Chairperson: Carolyn Boehringer.....310-849-4582

Advertising Co-Chairperson: Monica Gunns.....714-412-2667

**Welcome Wagon**: welcomewagonLHHIA@gmail.com

Chairperson: Vicki Cooke.....562-694-4949

## = Become a member =

La Habra Heights Improvement Association is a 501(c)(3) volunteer organization (Tax ID# 95-2455456) that receives no funding from the City of La Habra Heights—so we rely on your annual dues and other donations to pay for our many community events and projects. Annual membership dues are:

• REGULAR.....	\$35
• BRONZE.....	\$75
• SILVER.....	\$100
• GOLD.....	\$250
• PLATINUM.....	\$500
• DIAMOND.....	\$1,000+
• SAPPHIRE.....	\$5,000+

Pay online at [www.lhhia.com](http://www.lhhia.com) or mail your check (made payable to LHHIA) to: LHHIA, P.O. Box 241, La Habra, CA 90631.