



**INTERNATIONAL**  
LANGUAGE CENTRES



**INTERNATIONAL**  
LANGUAGE HOLIDAYS

**LEARN  
ENGLISH**



**MAKE  
FRIENDS**



**CREATE  
MEMORIES**



## **English Language Summer Centres**

**Ages 5 - 17**

**For Young Learners**

**Homestay and Residential Centres**

 [www.ilcentres.com](http://www.ilcentres.com)

 [info@ilcentres.com](mailto:info@ilcentres.com)

 +44 (0) 1206 544422

# Welcome!

ILC has provided summer schools under the name of International Language Holidays (ILH) since 1988. Students from around the world have benefitted from our wealth of experience in delivering dynamic full-immersion programmes. Courses are designed to maximise learners' understanding of English and increase their confidence in using it.

We are delighted to announce that we now have 7 young learner centres across the UK. Each of them offers high quality facilities with typical British charm and exciting study trip destinations nearby.



Ages : 5 -17



Levels : ★ A1 - C1



International environment



Friendly, caring homestay accommodation, all meals included at selected Centres



15 hours of lessons per week



Dedicated and enthusiastic teachers



1 full-day excursion and 1 half-day excursion per week at selected Centres



After-school programme of activities



Close supervision

★ We cannot accept A0 students.



# Care & Supervision

\* At every Centre, we provide a safe and caring environment where there are many opportunities to socialise and practise English.



The highest priority is given to welfare and supervision



The overall staff: student ratio is 1:10; this ensures close supervision



Staff and homestay providers All undergo thorough checks before working for us

\* Whether students stay with British homestay providers or in a residential centre, a student's welfare is our utmost priority



Homestay providers are visited regularly to maintain consistently high standards



All homestays are located within easy reach of the Centre and public transport



Residential centres are risk-assessed to ensure the ultimate safety of our students

# Programme Of Study

The ILH academic team has developed a unique, creative and current in-house syllabus using authentic materials.



The programme is :

- Age Relevant
- Communicative
- Fun

The programme builds includes

- Fluency
- Accuracy
- Vocabulary

The programme builds:

- 10 hours of learner-centred lessons
- 5 hours of topic-based project classes

Teachers use authentic English language media from online sources, including, quizzes, radio programmes, music, news websites and videos. Students actively interact with these online media to discuss, review and make recommendations.



# Accommodation

Residential or Homestay Summer Centres provide the following assurances.

- Homestay providers are visited regularly to maintain consistently high standards
- The staff assigned to arrange homestay are onsite.
- All meals are provided, including packed lunches when students are off-site for their tuition or on trips.
- Residential centres offer single room accommodation or rooms for up to 4 students sharing. Students can also relax in shared common rooms on the campus.
- Residential centres provide nutritionally balanced meals to help learners stay healthy, focused and energised. Hot and cold meals are served from a buffet in a large dining hall with a selection of starters, main courses and desserts, including a salad and fruit bar. The menu comprises cuisine from around the world and all dietary requirements are catered for.

We also have summer centres for students living with their own families or relatives.



# Activities and Excursions

*There are fun-filled and action-packed activities to cater for all ages and interests. Students can choose from a range of sporting and artistic activities with something for everyone.*

Excursions to nearby cities and famous attractions are an integral part of our programme. Students practice their English outside as well as inside the classroom for an authentic learning experience.

Activity programmes and excursions vary from centre to centre.  
For more information contact us at [info@ilcentres.com](mailto:info@ilcentres.com)



# Bristol Summer Centre

## Summer Centre

**Capacity: 54 students**

**For individuals and small groups**

Bristol has been described as a city that doesn't just buzz, it thumps!

Bristol has a reputation for being a centre of creativity, artistic energy, and exciting opportunities.

It has its own unmistakable identity, carved out by passionate locals and spirited fans.

In the city centre, there is a great variety of galleries and cultural exhibitions, like the aquarium and the M Shed, as well as fun indoor activities like laser quest and bouldering centres. However, as a city surrounded by the rolling hills and picturesque scenery of the Cotswolds and South West England, there are also any number of interesting and iconic sites to visit, such as Bath, Glastonbury and of course the famous Stonehenge. A visit to Bristol will include fantastic street food from all over the world, top-class shopping and a calendar packed with dynamic, public events and friendly festivals to complete the Bristol experience.



**Age**  
10-16 years



**Duration**  
1-6 weeks



**Lessons p/w**  
15 hours tuition:  
15 x 60 minute  
lessons per week



**Class sizes**  
10-14



# Bristol Summer Centre



**Britain's first  
European  
Green Capital**

# Cambridge Summer Centre

## Homestay Centre

**Capacity: 95 students**

**For individuals and small groups**

The beautiful, historic and exciting city of Cambridge is a great place to be, especially in the summer. Home to a world-famous university and the latest scientific and academic research and technology, Cambridge is a safe and friendly city with lots of parks and green spaces. It's easy to get around by bus, bike or electric scooter - or you can just walk to many places.

Our students can enjoy visiting the historic centre, with its incredible architecture and museums, restaurants and shops, cinemas and theatres. We can also offer a wonderful range of options for activities – everything from punting on the River Cam to afternoon tea in the beautiful village of Grantchester. And if you want to go further at the weekend, London is only 50 minutes by train.

Our dedicated and friendly team at ILC Cambridge look forward to welcoming you to our amazing city.



**Age**  
5-16 years



**Duration**  
1-8 weeks



**Lessons p/w**  
15 hours tuition:  
15 x 60 minute  
lessons per week



**Class sizes**  
10-14



# Cambridge Summer Centre



**A centre of  
learning for  
800 years**

# Colchester Summer Centre

## Homestay Centre

**Capacity: 120 students**

**For individuals and small groups**

ILC Colchester was established in 1969. The school is a short walk from the centre of Colchester - famous for being Britain's oldest recorded town. It is only 15km from Mersea Island and the coast.

The town has a rich heritage and history with interesting monuments such as the Roman wall, the Norman castle and "Jumbo", the Victorian water tower. It is also a vibrant, modern university town with a wide variety of shops, cafes, theatres, art galleries and a cinema complex.

The Centre has a student lounge with table tennis and pool tables, a library with computer access and large gardens. There is Wi-Fi throughout the building

By living with one of our friendly and welcoming homestay providers, students will be immersed in the British way of life. Colchester has a mainly British population, with over 90% being native speakers of English.



**Age**  
11-16 years



**Duration**  
1-8 weeks



**Lessons p/w**  
15 hours tuition:  
15 x 60 minute  
lessons per week



**Class sizes**  
10-14



# Colchester Summer Centre



**ILC Colchester  
was  
established in  
1969**

# Ipswich Summer Centre

**Homestay & Residential Centre**  
**Capacity: 110 students**  
**For individuals and groups**

Ipswich is an interesting mix of an ancient port, a busy commercial centre and an attractive historic town. Its famous Christchurch Park which has an annual music festival brings many visitors each summer.

In the town there are networks of narrow streets full-of wooden framed houses, handsome Victorian buildings and lots of interesting shops and good museums.

Modern Ipswich offers a wide range of exciting entertainment options in cinema, theatre and music.

Ipswich Summer Centre is located very close to the town centre making it easy for students to walk to a wide range of attractions.

By living with our friendly and welcoming homestay providers, students will learn more about British life as well as improving their speaking and listening skills.



**Age**  
11-17 years



**Duration**  
2-4 weeks



**Lessons p/w**  
15 hours tuition:  
15 x 60 minute  
lessons per week



**Class sizes**  
10-14



# Ipswich Summer Centre



Ipswich  
school  
was  
established  
in 1399

# Ipswich Summer Centre Residential

Residential

Capacity: 110 students

## Westwood House

Westwood house offers attractive boarding facilities in a Victorian mansion set in wooded grounds, just a 5-minute walk from the main school site.

Rooms range from single to three bed dorms.

Toilet and washing facilities are shared between rooms. There are separate male and female buildings.

Westwood house has an onsite common room, dining area, activity space and astroturf sports pitches. And dedicated areas for Group Leaders.



**Age**  
11-17 years



**Duration**  
2-4 weeks



**Lessons p/w**  
15 hours tuition:  
15 x 60 minute  
lessons per week



**Class sizes**  
10-14



# Ipswich Summer Centre

Single rooms, with  
ensuite facilities

This is a modern, newly refurbished building. with a warm and welcoming lounge, TV room, kitchen, IT suites and music rooms. All rooms in the boarding house are single beds & have ensuite toilet and shower facilities.

Contact ILH for further information on upgrading your booking to Sixth Form House.

## SIXTH FORM HOUSE



Large common area, for  
relaxing with friends



TV room, with gaming  
consoles



**INTERNATIONAL**  
LANGUAGE HOLIDAYS

# Portsmouth Summer Centre

## Summer Centre

**Capacity: 95 students**

**For individuals and small groups**

Portsmouth is known as 'the waterfront city', because it has many miles of coastline and beaches.

However, it is also technically an island.

Portsmouth is a fun place to visit with lots of activities and places to visit. If you like history, there are the museums of Britain's naval history, but it is also home to the modern Royal Navy with a large port to the west. There is also the coastal resort of Southsea at the foot of the city. It is a great place to spend time in the summer with people sunbathing and swimming in the sea. There are many tennis courts nearby and other sporting facilities such as a beach volleyball court on the seafront. Portsmouth is the home of the world famous hovercraft which can whizz you across the sea to the Isle of Wight in less than 15 minutes. If you like shopping, Gunwharf Quays is ideal with lots of shops to explore. It is also the location of the Spinnaker Tower, so you can see the whole of the city and beyond at the top of the iconic building.



**Age**  
10-16 years



**Duration**  
1-6 weeks



**Lessons p/w**  
15 hours tuition:  
15 x 60 minute  
lessons per week



**Class sizes**  
10-14



# Portsmouth Summer Centre



Home  
of the  
British  
navy

# Southampton Summer Centre

## Summer Centre

**Capacity: 54 students**

**For individuals and small groups**

Southampton is possibly the most famous port in England. Not only for the number of Cruises that arrive and depart annually, but it is internationally known for the departure of the Titanic in 1912 which sank on its maiden voyage to New York. Although Southampton lies on the South Coast of England, it is only a short bus ride to the New Forest. If you enjoy walking or hiking, then the New Forest is for you. There are also open top buses for you to enjoy the beautiful scenery at your leisure. If you prefer history, then Southampton has town walls which are in the main city centre. These are located next to one of Southampton's main shopping centres, West Quay, which has plenty of shops and restaurants for you to enjoy. For a day trip, London is only 1-hour 20mins away by train or bus. Winchester, the capital of England before London, is only 20 minutes on the train. There is something for everyone to do in Southampton.



**Age**  
10-16 years



**Duration**  
1-6 weeks



**Lessons p/w**  
15 hours tuition:  
15 x 60 minute  
lessons per week



**Class sizes**  
10-14



# Southampton Summer Centre



**Britain's  
cruise  
ship port**

# Walhampton Summer Centre

**Residential Centre**  
**Capacity: 60 Students**

Walhampton lies in beautiful ancient woodland on the edge of the New Forest, near Lymington in Hampshire. It is a private day and boarding school for boys and girls.

The School is set in 100 acres of lawns, lakes and woodland by the sea.

The school has a full campus with a Boarding House upstairs in the main building. There are dormitories for the Juniors to sleep ranging from 3-6 beds in size. Boys and girls are housed in separate sections of the building and there are well equipped common rooms for relaxation after the day's studies and activities are finished.

The school has an outdoor swimming pool, as well as tennis courts, football pitches and a hall for indoor games. All of this is in a country setting with trees to the front of the school and beautiful views across the field towards the Solent sea crossing to the Isle of Wight.



**Age**  
9 -14 years



**Duration**  
2-4 weeks



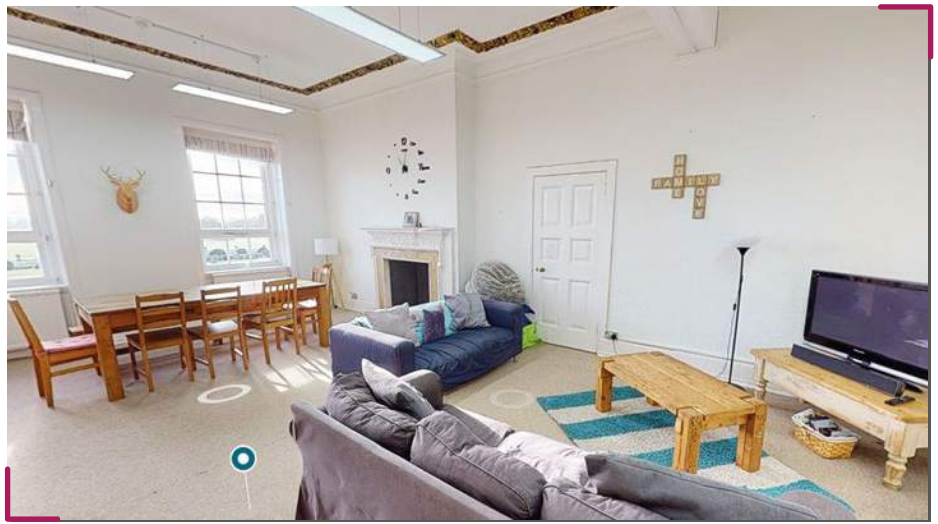
**Lessons p/w**  
15 hours tuition:  
15 x 60 minute  
lessons per week



**Class sizes**  
10-14



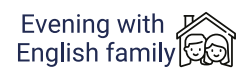
# Walhampton Summer Centre



Located on  
the edge  
of the  
New Forest

# Sample programme - HOMESTAY

## Homestay Centre



	Sunday	Monday	Tuesday	Wednesday	Thursday	Friday	Saturday
09.00 - 12.30							
12.30 - 13.45							
13.45 - 16.00				Half-day 			
19:00 - 21:00							

★ Full day excursion may be scheduled for Saturday or a weekday.

Afternoon activities	Evening activities	Half-day excursions	Full-day excursions
African drumming Fencing Badminton Football Basketball Friendship bracelets Board games Rounders Swimming Cheerleading T-shirt painting Dodgeball Table Tennis Cricket Tennis Drama Volleyball English baking Zumba	BBQ Bowling Disco Games night International Evening Movie night Quiz night	Bury-St-Edmunds Clacton-On-Sea Colchester Dedham Felixstowe Ipswich Layer Marney Mersea Island Suffolk Coast	Brighton Cambridge London Norwich



## Activities



Baking



T-shirt Painting



London Excursions



Drama



Table Tennis



Tennis



BBQ



# Sample programme - RESIDENTIAL

	Sunday	Monday	Tuesday	Wednesday	Thursday	Friday	Saturday
07:30 – 09:00		Wake up and get ready, and have breakfast					07:00 – 08:30
09:00 - 09:30		ASSEMBLY					
09:30 - 10:30		Lesson 1	Lesson 1	Lesson 1	Lesson 1	Lesson 1	
10:30 - 10:45		BREAK					
10:45 - 11:45		Lesson 2	Lesson 2	Lesson 2	Lesson 2	Lesson 2	
11:45 - 12:00		BREAK					
12:00 - 13:00		Project Lesson	Project Lesson	Project Lesson	Project Lesson	Presentations	Excursion to Cambridge Coach departs School at 9:00 Coach departs Cambridge at 17:00
13:00 - 14:00	House tour	LUNCH					
14:00 - 16:00	and rules, tour of school grounds, teambuilding activity, film, free time	<b>Woodbridge Tour</b> Buttrum's Windmill River Walk and Tide Mill Market Hill and Shire Hall 	<b>On-site activities</b> CHEERLEADING PHOTO HUNT TENNIS VOLLEYBALL	<b>1/2 Day Excursion:</b> Guided tour of Ipswich and shopping  Depart school at 13:30  Depart Ipswich at 16.30	<b>On-site activities</b> FENCING T-SHIRT PAINTING SWIMMING KORFBALL	<b>On-site activities</b> FOOTBALL DRAWING DRUMMING BASKETBALL	
16:00 - 18:00		Free time/Town trip/Shower and change					
18:00 - 19:00		DINNER					
19:00 - 21:00		Mini Olympics	Murder Mystery	BBQ and Quiz	Debate Night / Public Speaking	Disco and Karaoke	
22:30 LIGHTS OUT		Get ready for bed					

- Volleyball
- Basketball
- Korfball
- Handball
- Football
- Rounders
- Zip Line
- Swimming
- Tennis
- Table Tennis
- Archery
- Fencing
- Karate
- Yoga
- Climbing Wall
- Slip 'n' Slide
- Casino
- KinBall
- Dodgeball
- Kayaking

- Arts & Crafts
- Drama
- Baking
- Discos
- Karaoke
- Cheerleading
- Drumming
- Photo Hunt
- Film
- Castle visit
- Museum visits
- Team building
- T-shirt Painting

An action-packed week jammed full of team sports and adventurous activities!



# Centre Location



ILH Summer Centre

Airport



International Language Holidays  
19 Lexden Road, Colchester  
CO3 3PW, United Kingdom



INTERNATIONAL  
LANGUAGE CENTRES

[www.ilcentres.com](http://www.ilcentres.com)

[info@ilcentres.com](mailto:info@ilcentres.com)

+44 (0) 1206 544422

Accredited by the  
 BRITISH  
COUNCIL  
for the teaching  
of English in the UK



**ROAD TO IELTS**  
IELTS preparation and practice