



**sinap's**

# Fifteen Years of Impact

**2025  
IMPACT  
REPORT**



# FIFTEEN YEARS OF IMPACT



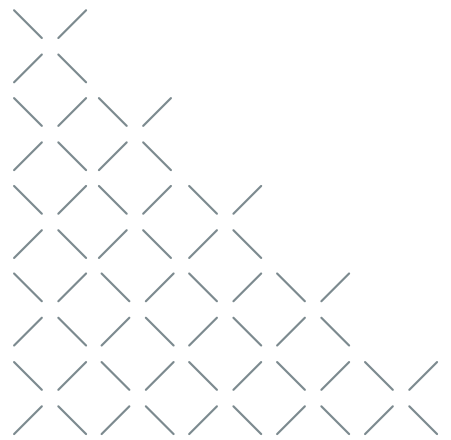
# THE POWER OF

## MULTIPLYING IMPACT





What happens when we equip an entrepreneur to grow a healthy business, lead with integrity, and follow Jesus boldly in the marketplace? The impact multiplies.

Across emerging and frontier markets, Sinapis entrepreneurs multiply access to dignified work, essential products, and economic opportunity in communities too often overlooked. As they grow profitable businesses, they foster human flourishing while stewarding the earth for future generations. Most importantly, they make disciples by using business as a platform to live out the gospel through word and deed.

Each story in this report is part of a larger narrative unfolding around the world. Because when God grows a seed, the harvest multiplies.



# MULTIPLYING

	06	10	12	20	22	26
						
	<b>Access</b> Dr. Angela Kidambi KENYA	<b>Flourishing</b> Alexandre Niyongira RWANDA	<b>Hope</b> Thomas & Manju INDIA	<b>Disciples</b> Genesis Buinwi CAMEROON		<b>A Movement</b> FORGE Summit SOUTH AFRICA
		<b>Sustainability</b> Bryan Lukano KENYA				

Dr. Angela Kidambi | Medserv  
3 MILLION PATIENTS

MULTIPLYING  
ACCESS

# Creating *Life-Saving* Supply Chains

**Dr. Angela Kidambi knew people were dying needlessly, and she refused to accept it.**

As a pharmacist in Kenya, Angela regularly visited doctors and supplied the medications they needed. But again and again, doctors would ask her for life-saving drugs she couldn't access anywhere in the country.

The deeper she looked, the clearer the problem became: access. Patients were not dying because their diseases were untreatable, but because the medicine they needed was unavailable.

She made it her business to change that.

Her opportunity came when a doctor launching a new cancer center challenged Angela to supply a specialized drug that no one else in Kenya could provide. Angela researched global markets, evaluated quality, compared prices, and delivered. The doctor responded by requesting 15 more medications. Soon people were being referred to the center from across the continent. Angela and her team helped bring world-class cancer treatment to East Africa.

But Angela didn't stop there. Her business, Medserv, is now the exclusive Kenyan distributor of a surgical product for hole-in-the-heart procedures for children, while providing hands-on training to teach doctors across the country how to use it. To date, over 500 children have received life-saving heart procedures because of Medserv. This care previously required travel to other countries like India at more than four times the cost.



**“People in Africa often die not because a disease is untreatable, but because they cannot get access to the right treatment.”**

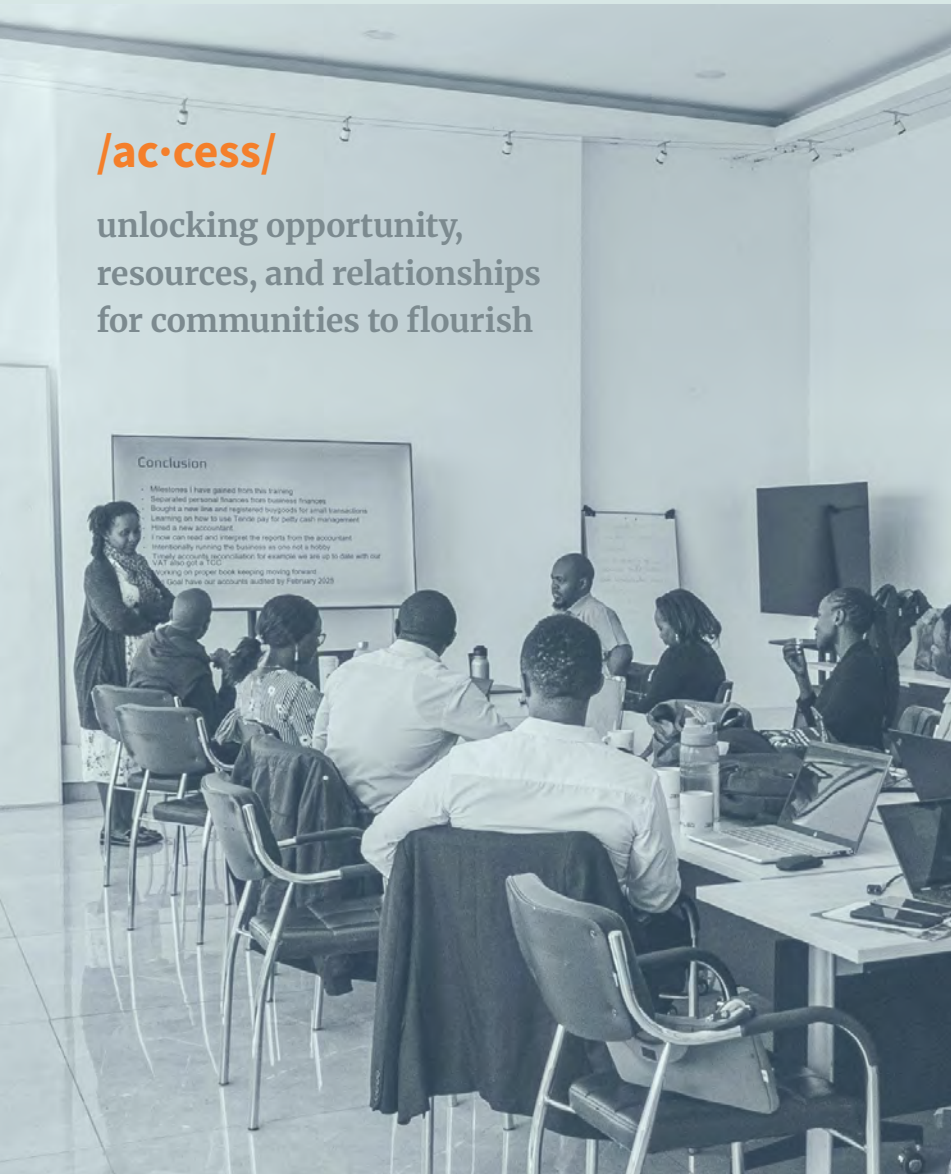
— Dr. Angela Kidambi

In the midst of this growth, Angela joined Sinapis' Ascent accelerator in 2025. Ascent unified her team around a Kingdom vision and helped put processes in place for staff development. Since completing Ascent, Medserv has grown from 15 to 23 employees, with several advancing to become managers.

Ascent also helped Angela prepare for investment. She has now secured \$500,000 USD in funding and is actively seeking \$1.5 million to expand her inventory.

Angela's faith drew her to Sinapis, and her faith is propelling her forward. With a bold vision to impact one billion lives, she plans to expand Medserv into 15 countries across Africa by 2032, bringing advanced diagnostics, rare disease therapies, and treatments for conditions like diabetes to patients who have never had access.

Medserv has already transformed cancer treatment in Kenya. Now, Angela is excited to work across the continent to ensure that no patient's survival is dependent on where they live.



**/ac·cess/**

unlocking opportunity,  
resources, and relationships  
for communities to flourish

**ACCESS**

**ACCESS TO JOBS**

15 million new jobs are needed each year to absorb Africa's growing youth population.

**ACCESS TO MARKETS**

Limited connections prevent businesses from capturing more value from what they produce.

**ACCESS TO CAPITAL**

Capital is scarce in frontier markets. Banks are conservative. Risk tolerance is low. Interest is high.

**Sinapis alumni are creating jobs and increasing incomes**

**95%**

of Ascent alumni pay their staff **above market rates** for the same level of employment

**\$120M**

in investment capital raised by alumni over the past **15 years**

**\$34M**

in investment capital raised by alumni within the past **three years** alone

**Our 4,080 graduates have:**

Created **16,328** new jobs

Impacted **81,642** dependents through jobs

Improved the lives of **437,379** more people through the supply chains of their businesses

**Bryan Lukano** | Zijani  
 118 TONS RECYCLED IN 2021  
 TO 908 TONS IN 2025



# Turning Waste into Worth

When Bryan Lukano looks at waste, he sees opportunity.

That instinct is at the heart of Zijani, the company Bryan founded on a simple question: what if used cooking oil could be recycled rather than thrown away? Through partnerships with restaurants, hotels, and catering companies across Kenya, Zijani collects oil that would otherwise pollute waterways and clog drainage systems. That waste is then processed into biodiesel, which is a cleaner, renewable alternative to fossil fuels.

Zijani's system reduces harmful emissions, improves public health, and creates dignified employment. Restaurants gain an additional revenue stream and longer-lasting kitchen infrastructure. Workers gain meaningful livelihoods. Communities gain cleaner air and water. What once harmed neighborhoods now strengthens them.



“Doing the right thing is important. It is possible. And it is profitable.”

— Bryan Lukano

Seeing value where others see waste is a reflection of the Kingdom.

Because of Sinapis, Bryan has now connected with key business partners, improved his systems, deepened his approach to delegation and strategy, and committed his business to God. Bryan views himself as a steward of Zijani. That perspective influences how he leads and cares for the people and resources entrusted to the business. As a result, the company grew from three employees to a team of 32. Zijani now serves 1,500 clients across Kenya, including supplying Kenya Airways with sustainable aviation fuel, for which there is increasing demand.

Bryan saw a problem in his community and created a marketable solution. Through Zijani, his work will impact lives, build the economy, and restore the environment for years to come.

**49%**  
 of Sinapis alumni are applying sustainability principles in their businesses. This is up from **36%** last year.



Zijani supplies Kenya Airways with sustainable aviation fuel for long-haul flights.

Alexandre Niyongira | Freedom Farm

1 GREENHOUSE TO 6  
1 EMPLOYEE TO 12



## MULTIPLYING FLOURISHING

# Cultivating for the Community

Alexandre Niyongira longed to grow a business that could meet the needs of his community.

After earning a degree in Business Information Technology and gaining several years of professional experience, Alexandre was excited to create a company that reflects his Christian values and made a real impact.

Before forming his business, he joined the Sinapis Aspire Launchpad. This startup accelerator helped him hone his business idea while equipping him with a strong peer network and a clear framework for integrating faith and leadership.

“What I achieved in two years would have taken 10 without Sinapis.”

— Alexandre Niyongira

In 2024, Alexandre officially launched Freedom Farm. In less than two years, he has grown from one greenhouse to six and produces high-value crops such as sweet peppers, cucumbers, and tomatoes for both local and export markets. To strengthen sustainability, Alexandre introduced livestock and created a closed-loop farming system where crop waste feeds animals, animals produce organic fertilizer, and fertilizer enriches greenhouse production.

“Agriculture needs an ecosystem. Everything supports each other,” Alexandre says.

That belief shapes more than his farming methods. Just as each part of a healthy ecosystem contributes to growth, Alexandre believes communities flourish when people intentionally support one another.

What began as a one-man operation now employs 12 team members. For employees who once struggled with financial uncertainty, stable income has brought dignity and hope.



“Before, life was really difficult,” Alexandre’s employee Emeline shared. “Today, many of us can see real progress in our lives.”

Beyond growing his own enterprise, Alexandre helped establish the Rwanda Greenhouse Farmers Cooperative and a centralized collection center. This strengthens bargaining power, reduces price volatility, and enables farmers to access fair and reliable markets.

In addition, he created a community initiative that mentors children and pays their school fees. He is also developing programs to equip young mothers with practical, income-generating skills so they can build stable futures.

Alexandre’s long-term vision is bold—over 100 greenhouses, more than 1,000 children educated, and an ever-growing network of farmers and families.

Alexandre shows us that when one entrepreneur plants a seed in faith, an entire community can flourish.

# At Sinapis, we equip entrepreneurs to build businesses that **help** their **communities flourish.**

While we've always prioritized relationship building in our offerings, this year we conducted focus groups which confirmed how important relationships are in entrepreneurship. How leaders treat employees, suppliers, and customers shapes not only business success, but the health of entire communities. As these relationships grow, ecosystems become stronger.



## FLOURISHING BUSINESSES

In East Africa, only **40%** of businesses survive beyond three years. However...

**88%**

of Sinapis companies are still in business three years after our engagement with them

**66%**

of alumni say Sinapis saved their business from failure

**47%**

compound annual growth rate (CAGR) in revenue across Sinapis alumni

## FLOURISHING COMMUNITIES

**83%**

of alumni **refuse** to give or accept **bribes** as a direct result of what they learned at Sinapis

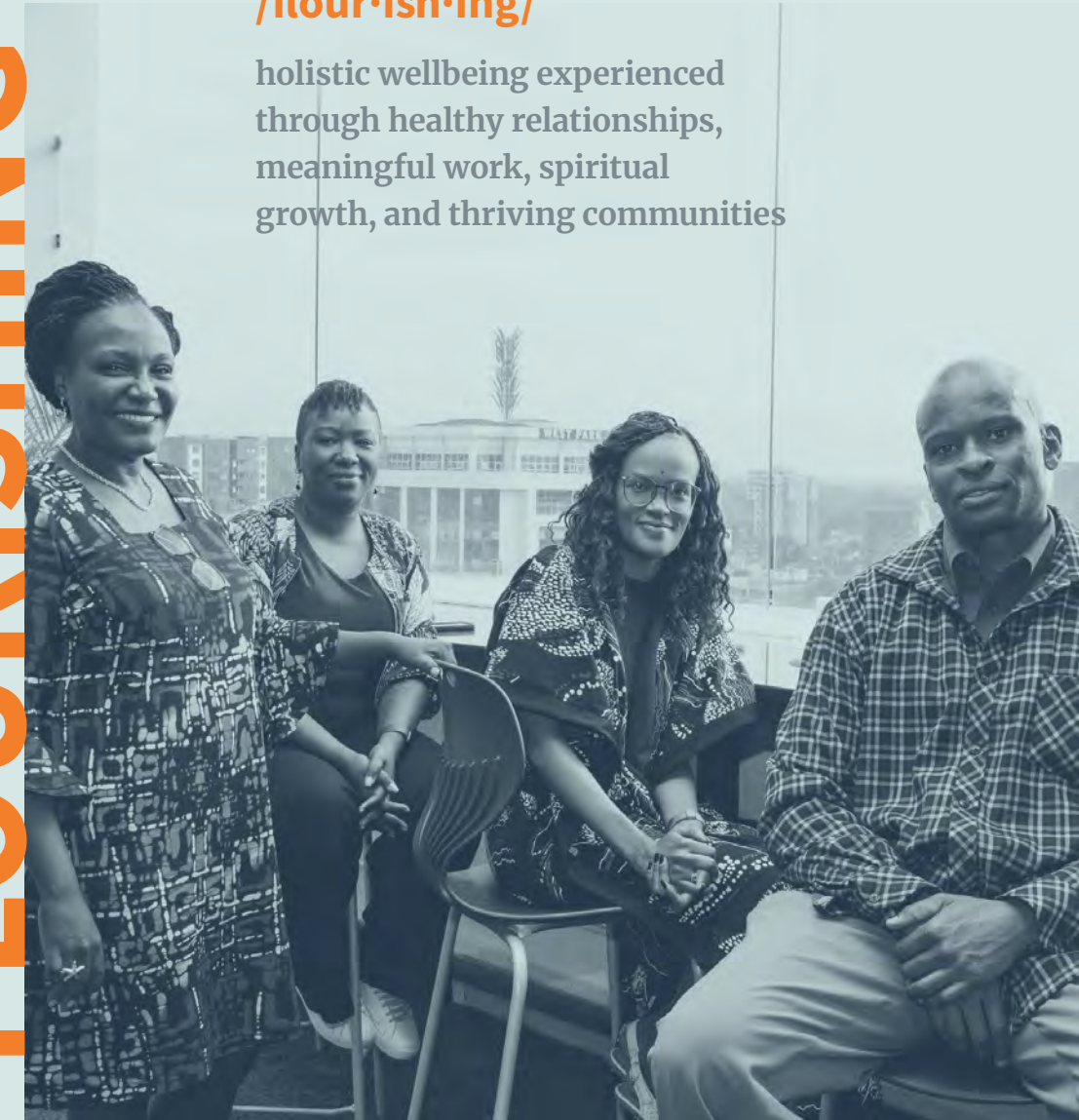
**100%**

of Ascent alumni pay suppliers **fairly and on-time**

**FLOURISHING**

## **/flour·ish·ing/**

holistic wellbeing experienced through healthy relationships, meaningful work, spiritual growth, and thriving communities



# MULTIPLYING GLOBALLY

We want to empower a movement of Christ-centered entrepreneurs to grow businesses that transform nations.

We equip entrepreneur support organizations to raise up the next generation of business leaders within their own countries. Today, we partner with 12 organizations who make up the Sinapis Network. Since 2011, our proven programs, toolkits, and systems have supported entrepreneurs in 18 countries with ongoing access to our experienced team. We also connect entrepreneurs with mission-aligned investors ready to accelerate their growth.

But the network is more than our tools and content; it's a collaborative community of practitioners. Through regular gatherings, our partners share hard-won lessons, refine best practices, and sharpen one another's work in ways no single organization could do alone.

What began as a seed in Kenya has grown into a global network of thousands of entrepreneurs whose businesses are creating jobs, strengthening communities, and making disciples.



In 2025, we welcomed **2** new partners in India & Zimbabwe



## How do we select partners?

Sinapis partners with organizations that share our mission to equip Kingdom entrepreneurs. Each is uniquely positioned to serve their local context. Some operate in regions with high aid dependency and a small number of Kingdom businesses. Others support growth-stage companies creating hundreds of jobs.

Our partners unlock the power of entrepreneurship to offer sustainable, hope-filled solutions to poverty. The Sinapis Network fuels a global movement, advancing sustainable solutions to economic and spiritual poverty across diverse regions, cultures, and economies. This is multiplication in action.

# INDIA

## NEW NETWORK PARTNER SPOTLIGHT

In early 2025, members of our team traveled to India to equip a new network partner. By year's end, this organization\* had engaged with 48 early-stage entrepreneurs across six different cities in India.

What makes their approach distinct is their posture of service. Rather than asking city ecosystem leaders to adopt their model, they ask what those leaders need. In a country where each city experiences different economic realities and cultural dynamics, that humility built trust.

The results speak for themselves: 96% of graduates finished with a robust business model and a clear path forward. In 2026, this partner plans to expand to two new cities and launch an alumni program to stay connected with entrepreneurs throughout their business journey.

“We are so grateful for this partnership. What makes it special is how intentional and relational Sinapis’ team is to journey with us and make sure we are getting enough support.”



In their **first year** offering Aspire, our India partner reached:

**48**

early-stage entrepreneurs

**6**

cities

**96%**

of founders were confident they had a robust business model and clear path forward

**Thomas & Manju**  
Joshua Farms

DISTRIBUTING TO  
40 CITIES IN INDIA



## MULTIPLYING HOPE

Thomas and his wife Manju\* had the type of careers most people in India long for. Thomas was a successful mechanical engineer and Manju a pharmacist. Yet, one morning they read a statistic that they couldn't ignore. In India, farmers were taking their own lives at a rate of one per hour.

Thomas and Manju didn't know how they could help, but they were determined to learn. They spent the next 14 years praying and discerning. Thomas enrolled in a three-year agricultural program to gain deeper understanding. The couple traveled across India, often staying at mission stations where Bible translation teams and church planters were embedded in rural communities. There, they observed and asked questions. What were farmers truly facing? And what would actually help?

They discovered that most farmers were not lacking land or basic resources, but training and access to fair markets. Some had abandoned farming altogether and migrated to cities, only to struggle there as well. Others were trapped in cycles of exploitation, forced to sell their produce at unfair prices because they didn't know how to get their products into more profitable markets.

# From Despair to Dignity

What was needed was not short-term charity, but a sustainable system that could restore dignity and long-term provision. That conviction led Thomas and Manju to start Joshua Farms in the fall of 2024 with a vision that by transforming farmers, they could transform societies.

"We didn't know how to run the business, but still we started," Manju says.

Eager to launch Joshua Farms with a sturdy foundation, they joined Aspire through Sinapis' network partner in India. Determined, Thomas drove six hours each way for nine weeks to attend the program! The investment paid off. Aspire helped Thomas and Manju identify their customers, strengthen their financial processes and sales channels, and connect with other Christ-centered entrepreneurs. As a result, their business tripled in less than a year.

Joshua Farms' model is a win-win-win. They buy honey and spices directly from farmers at fair prices, which cuts out exploitative middlemen. They market the products under the Joshua Farms brand and resell to broader markets online. From the profits, they help fund the education of farmers' children and train suppliers in more effective farming practices.



God continues to confirm their path. One of the clearest moments came when they met Sudha Mary, a beekeeper whose husband passed away suddenly, leaving her family in crisis. Though money was short, she had nearly 2,000 pounds of honey and needed to sell it quickly to cover mounting expenses.

Thomas and Manju stepped forward in faith.

**"God led us to buy the honey from her and market it under our brand. Her happiness and how God guided us influenced us a lot."**

— Manju

Thomas and Manju aim to source directly from rural communities by partnering with mission stations across India. They will build their inventory based on what grows best in each region, offering a diverse product range while strengthening local supply chains. As a result, the mission stations will bring added value to the communities they serve.

Thomas and Manju didn't stay on the comfortable path. They stepped fully into what God was calling them to do, investing their talents, connections, and resources for the sake of others. And God is using their faithfulness to multiply hope across India.

*\*Names changed for security.*



**Genesis Buinwi**  
Faith Health Center

FROM 30 TO 80  
PATIENTS PER MONTH

# Bringing True Healing

MULTIPLYING  
**DISCIPLES**



In 2019, Genesis Buinwi opened Faith Health Center with nothing more than a one-room clinic and a burden to serve his community and share the gospel. At first, he could only meet with one patient at a time. Today, he operates the leading healthcare facility in the area, serving nearly 80 patients per month.

The turning point came in 2025, when Genesis joined the Aspire Launchpad through Sinapis' network partner, CMBC Africa in Cameroon.

"Sinapis was a silver lining in a dark cloud," Genesis says. Aspire helped him understand how to apply sound accounting principles and improve his marketing. It also inspired him to invest more heavily in his staff. He realized scaling his business was not just personal ambition. It was a way God could use him to impact more lives.

## Discipling Employees and Patients

As a result, the clinic grew from six to 15 employees and Genesis set out to disciple each one. He brought in a marketplace ministry pastor who opens each morning with devotions and prayer. This pastor currently invests in over 500 patients and caregivers at the clinic, often meeting with them in their homes. Many who would never walk into a church come to the clinic for prayer and guidance.

This love extends to how they handle payment. "We look at patients from the love of Christ. Though some of them may not be able to pay their bills, we take delight when they are healthy," Genesis says. This principle has influenced many young women who came to the clinic seeking abortions to stay, receive care, and deliver healthy babies.

Kakeu Aida testifies, "When my mother fell seriously ill, we were overwhelmed and unsure where to turn. Faith Health Center received us with kindness and care. But what impacted me most went beyond the medical care. There were times of prayer which touched me deeply. As my mother began to improve, I also began to change."

**"My faith, which had grown weak over time, was renewed. I began praying and reconnecting with God again."**

— Kakeu Aida, daughter of a Faith Health Center patient



## Discipling an Industry

Aspire also reframed Genesis's understanding of profit. "In impacting lives, you make more profit. People trust you more, and they come to you more," Genesis says. Despite giving freely, their revenue has more than tripled. "God gives the growth. Whatever we need, God has a way He will supply."

Now Faith Health Center is mentoring three other healthcare facilities in the region on how to operate with excellence and biblical values. Each one plans to join Aspire. Genesis's dream reaches further still: owning land where he can build a full-service hospital, and satellite campuses beyond Cameroon.

"Many people will give their lives to Christ and be disciplined in the marketplace," Genesis says.

He is proving it one patient at a time.

DISCIPLES

**/dis·ci·ples/**

Followers of Jesus who embody His love, live out their faith daily, and lead others toward Him through word and deed



Our mission is to **make disciples** and **alleviate poverty** through the power of entrepreneurship.

This year, alumni reported:

- 75%**  
have seen someone **come to Christ** through their business
- 64%**  
have completely **changed mindsets** relating faith to business
- 69%**  
state their **faith** was significantly **strengthened** through Sinapis
- 38%**  
are actively helping **five or more** people move forward in their discipleship journeys

“Go therefore and make disciples of all nations, baptizing them in the name of the Father and of the Son and of the Holy Spirit, teaching them to observe all that I have commanded you. And behold, I am with you always, to the end of the age.”

**MATTHEW 28:19-20**

# FORGE

## MULTIPLYING A MOVEMENT

What if the greatest impact came not from what an organization could accomplish alone, but from what all of us could build together?

At Sinapis, our vision is to see a thriving community of Kingdom entrepreneurs bringing flourishing to every frontier market nation in the world. A challenge of that magnitude requires more than organizational ambition. It demands a global movement. That means thinking beyond our own capacity and collaborating generously with other aligned organizations.

That's why the FORGE Movement was born.

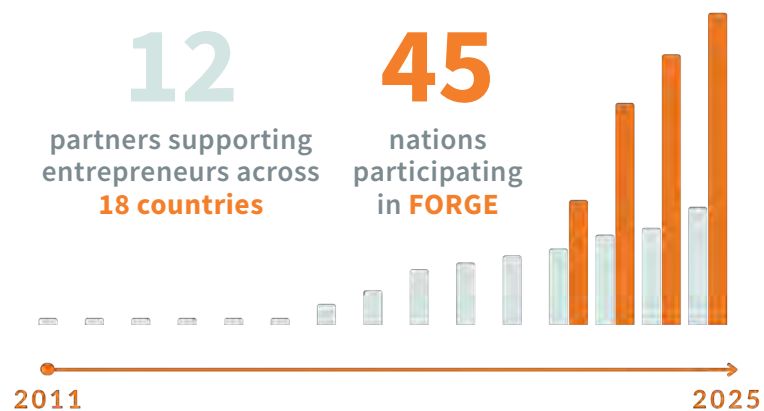
WATCH THE HIGHLIGHTS



In 2025, we co-lead the fourth FORGE Summit in Cape Town, South Africa, alongside Heron Group, Angello, and a fantastic team of local host organizations. This invitation-only summit drew 285 leaders from 45 nations.

At its heart, FORGE encourages locally-led change. Investors, entrepreneurs, and leaders from accelerators gathered to worship and collaborate around a shared vision of the kingdom of God advancing through the marketplace. What unfolded in Cape Town made one thing abundantly clear: God is on the move.

The Summit's theme, Reimagine, invited participants to unleash God-given creativity and practical solutions for their ecosystems. In a moment marked by polarization, the FORGE Movement is pursuing a mindset grounded in redemption, generosity, and possibility. Each session equipped leaders with practical tools and renewed participants' imagination for their work and their nations.



Next Global Summit  
APRIL 2027  
CAIRO, EGYPT





# ACCELERATING LOOKING AHEAD MULTIPLIERS

Over the past 15 years, it has become increasingly clear to us that a relatively small number of entrepreneurs are creating an outsized share of the impact. These founders are building durable, profitable companies that create jobs at scale, strengthen local economies, and become pillars in their communities. We will be focusing more on these “Multiplier” entrepreneurs in the years ahead, providing access to mentorship, advisory services, and capital connectivity to help them grow to their full potential.

## Deeper Investment

In addition to preparing founders for investment and growing our network of capital providers, in 2026, Sinapis will begin investing capital directly to further support high-potential founders. This will begin with our highest level accelerator, Ascent, and then include integrating capital or potential funding into other offerings.

## A Global Movement

We are also helping our international partners build pathways for growth-stage entrepreneurs while continuing to invest in the FORGE Movement globally. Through it all, our commitment remains unchanged: equipping entrepreneurs to scale profitable businesses, lead with integrity, and integrate their faith into their work.



## 2025 Financials

# You are changing lives at scale

The impact highlighted in this report was made possible by the generosity of our partners. Together, you are helping entrepreneurs change lives around the world. People who were once out of work are experiencing the dignity of meaningful employment for the first time. Families have food on the table. Children are able to attend school. Communities are growing stronger. And most importantly, people are coming to know Jesus.

Every

# \$25

donated to Sinapis changes someone's life through jobs and supply chains

For every \$1 donated, Sinapis alumni generated

# \$7

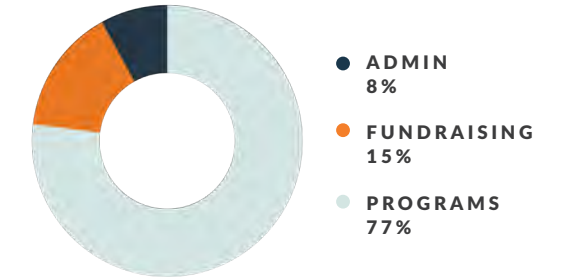
in additional revenue *this year*

# 80.3

**All Time Net Promoter Score**  
(70 or above is considered world class)

	2024	2025
<b>SUPPORT</b>	<b>\$2,422,308</b>	<b>\$3,153,943</b>
<b>EXPENSES</b>	<b>\$2,305,607</b>	<b>\$2,627,093</b>
Programs	\$1,766,522 (77%)	\$2,023,866 (77%)
Administration	\$234,788 (10%)	\$205,475 (8%)
Fundraising	\$304,297 (13%)	\$397,752 (15%)
<b>NET</b>	<b>(\$116,701)</b>	<b>\$526,850*</b>
<b>ASSETS</b>	<b>\$1,002,476</b>	<b>\$1,539,591</b>
<b>LIABILITIES</b>	<b>\$6,213</b>	<b>\$16,478</b>
<b>NET ASSETS</b>	<b>\$996,263</b>	<b>\$1,523,113</b>

\*In 2025, Sinapis began raising philanthropic capital restricted for direct investment into portfolio companies. Some funds raised in 2025 will be deployed in future years, but are included in 2025 support.



## Good Stewardship

Sinapis prioritizes accountability. We belong to the Evangelical Council for Financial Accountability (ECFA) and adhere to their standards of governance, financial oversight, legal compliance, and stewardship. Candid, Excellence in Giving, and Charity Navigator have also affirmed our best practices in financial transparency.



# Fifteen years ago, Sinapis began with a bold conviction: local entrepreneurs rooted in faith can transform communities from the inside out.

Since 2011, we have served 4,080 entrepreneurs who are launching and growing businesses in frontier markets. They are solving difficult problems with innovative solutions. The jobs they create support families, making it possible for people to put food on the table, access healthcare, and keep kids in school. These entrepreneurs are strengthening their economies and funding local churches. All through the power of profitable Kingdom business.



GIVE TODAY



[sinapis.org/give](https://sinapis.org/give)