

INSTALLATION INSTRUCTIONS

DUO SAFETY CARTRIDGE

**SAFETY EQUIPMENT**

 -Safety Goggles

 -Gloves

 -Other
as required by facility

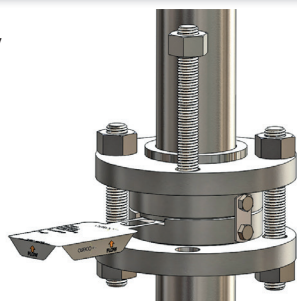
TOOLS & MATERIALS

 -Cleaning Solvent
compatible with service media

 -Torquing Specifications

 -Torque Wrench

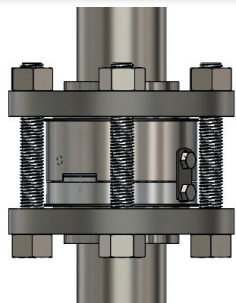
1 Disassembly



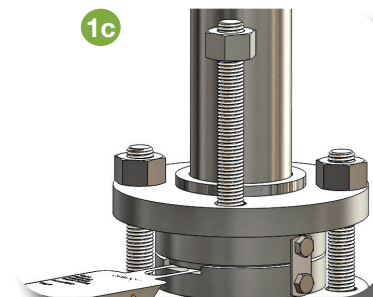
2 Placement & Alignment



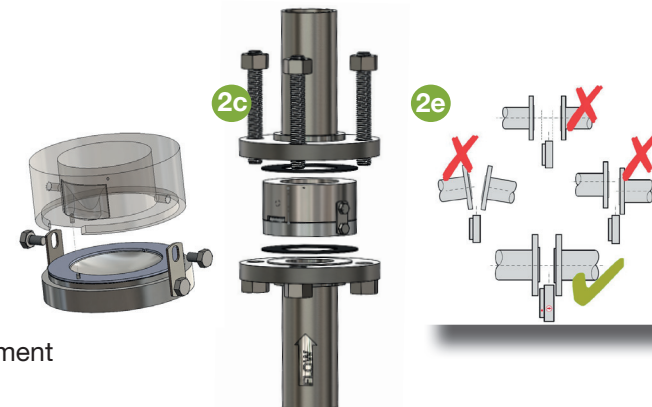
3 Torquing & Inspec



- 1a** Perform lockout & tagout procedures
- 1b** Depressurize system
- 1c** Loosen nuts, remove studs as needed, inspect for rust, galling, and other damage
- 1d** Remove assembly



- 2a** Clean flange surfaces, inspect for damage
- 2b** Place gaskets and Safety Cartridge between flanges
- 2c** Check flow arrows
- 2d** Lubricate Studs & Nuts, replace & finger tighten
- 2e** Ensure proper piping alignment



- 3a** Determine Torque:
 - follow gasket manufacturer requirement
 - or reference ASME PCC-1
- 3b** Torque evenly, in increments, up to 100%, following star pattern
- 3c** Follow facility's testing & inspection procedures

