

SCHMALENBACH

HOME LIVING

distributed by eggersmann usa





SCHMALENBACH DESIGN. HANDMADE IN GERMANY.

We invite you with this brochure to discover some projects realized with furniture from Schmalenbach Design. Custom-built furniture, which also allow you to arrange your living, working and public space according to your individual wants and needs. This hand-made furniture is manufactured according to your dimension, material and surface requirements in our factory, which is located just outside of Cologne, in Oberbergischen Land.

Welcome to the world of Schmalenbach Design.



SHELVING SYSTEM

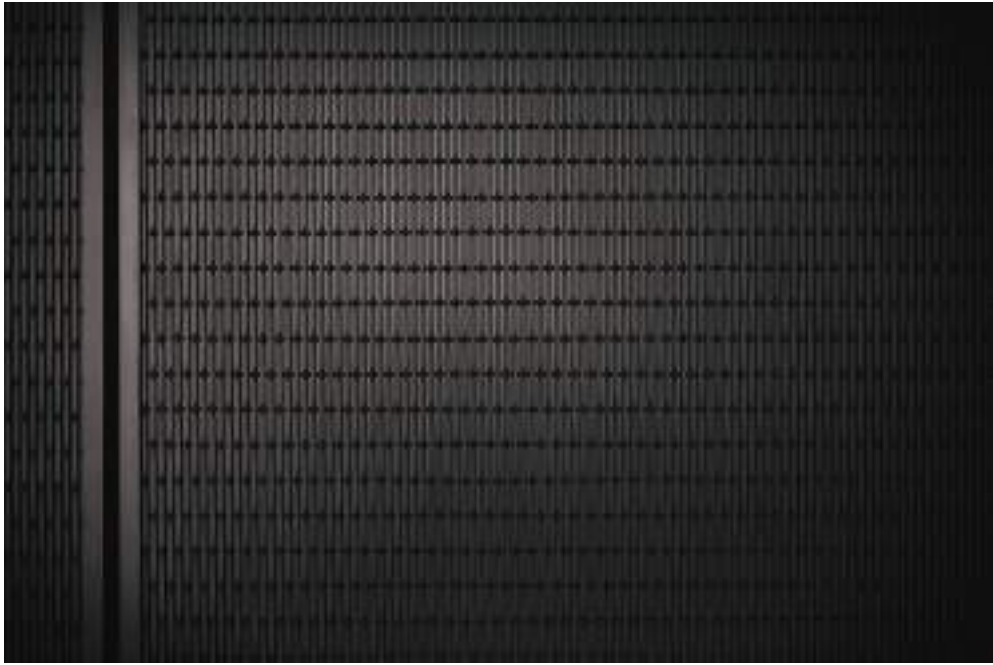
with integrated bar and hidden door



Shelving system in eco leather finish, cabinet elements in decor eucalyptus dark, bar shelves in white onyx stone, bronze mirror front panels with woven aluminum material









ENTERTAINMENT CENTER S 28

with integrated TV lift, bar compartment,
open niches for artwork and paintings



Entertainment center S 28 in veneer eucalyptus smoked,
wall panels in eco leather slate, storage behind wall panels







ENTERTAINMENT CENTER S 28

with integrated TV lift, bar compartment, open niches,
glass door units , integrated electrical fire place



Entertainment center S 28 in veneer choco nut, wall panels
in eco leather camel, storage behind wall panels









ENTERTAINMENT CENTER S 28
with mechanism to hide TV, electrical fire place,
built in bar area, AV storage and display niches

Entertainment center with smoked larch veneer niches and cupboards, wall paneling in eco leather taupe color, built in bar, LED light on all sides in niches, storage behind eco leather panels

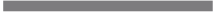






**SHELVING SYSTEM S 28
WITH INTERGRATED FLIP DOWN DESK**

with glass cabinet, flip down desk, drawers
and file drawers, open shelving storage



Shelving system S 28, finish decor metal look, niche, drawer fronts and desk in
veneer smoked larch, indirect LED strip lights, glass doors with bronze tinted
glass







WALL PANELING

with metal details, integrated shelving and TV niche



wall panels veneer eucalyptus smoked,
metal details anodized in gold colour





SHELVING SYSTEM S 28

with intergrated seating niche, sliding ladder,
tv wall with integrated bar and electrical fire place



Shelving system S 28 in matte lacquer dark blue, veneer larch smoked,
sliding ladder in metal black finish









LIVING ROOM WALL S 28

with concealed bar element, glass cabinets
and electrical fire place

Living room wall S 28, wood decor finish, bar element with eco leather accents,
glass doors with frame in bronze anodized and parsol glass, built in humididor and
wine fridge, bar element can be concealed with a motorized front panel











ENTERTAINMENT CENTER S 28

with integrated TV lift, bar compartment, open niches,
glass door units, integrated optimist fire place



Entertainment center S 28 in smoked oak, wall panels in eco leather slate,
storage behind wall panels, glass door cabinets with glass doors in parsol glass





SCHMALENBA



DINING AREA

with table and room dividing glass doors



dining area in black oak veneer, eco leather black, laminated glass
with fabric inlay







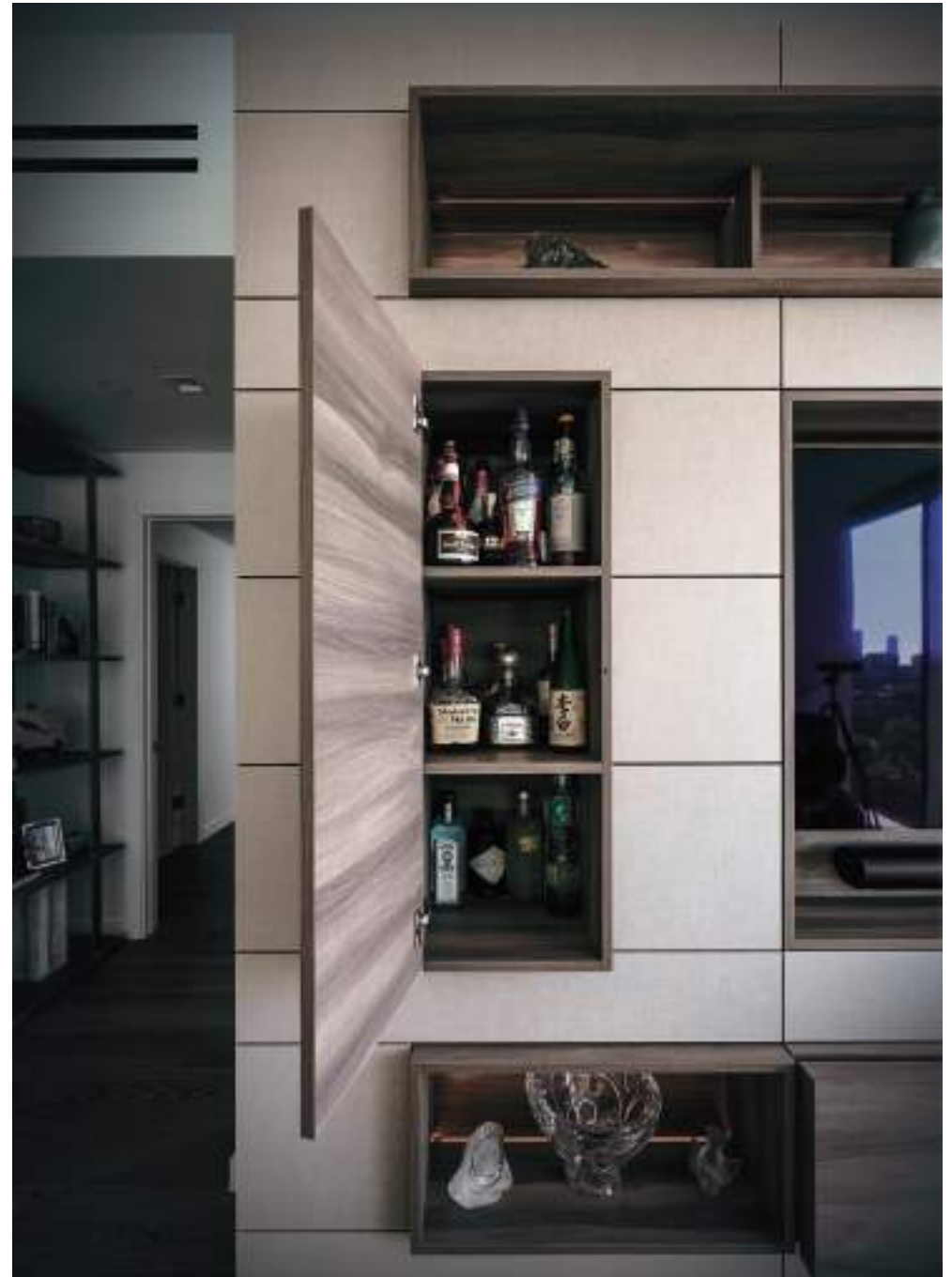


ENTERTAINMENT CENTER S 28

with TV niche, storage units with hinged and flip doors,
open display niches



Entertainments center S 28 in elm truffle decor,
wall panels in decor linen look







WALL-MOUNTED SIDEBOARD AND GLASS DOOR UNIT



Wall-mounted sideboard in elm truffle decor, with integrated grip channel, glass door unit with glass side panels and glass shelves with integrated lighting







SHELVING SYSTEM S 28



Shelving system S 28, finish decor eucalyptus grey, indirect LED lighting,
TV niche, hinged doors, storage for books and decoration











SHELVING SYSTEMS

with integrated desk solution, vertical sliding doors, movable ladder



Shelving system in veneer thermo oak, flat and structured, accents in various matte lacquer colors







SHELVING SYSTEM S 28



shelving system S 28 in veneer oak sand, storage units with hinged doors, open niches with stack shelves, wall panel for TV





GLASS DISPLAY CABINET AND SHELVING SYSTEM S 28

Glass cabinet with four side glass and integrated LED lights, shelving system with integrated TV

Glass cabinet S 28, parsol glass, aluminum profiles in bronze finish, integrated LED light, shelving system S 28, red gum veneer, matte and high gloss lacquer finish, center panel starburst veneer pattern





SHELVING SYSTEM S 28

Veneer oak, stained and lacquered, with integrated bench,
seat and back seat upholstered with eco leather, soft stitch pattern







SIDEBOARD SYSTEM S28

with drawers and hinged doors,
recessed edge grip







SIDEBOARD SYSTEM S 28

wall-mounted, with drawers
and recessed edge grip







SIDEBOARD SYSTEM S 28



Finish matte lacquer and fineline veneer
with doors, drawers and wall mounted shelves







BOOKCASE S 28

with niches to present items and chests of drawers



Bookcase S 28, finish decor icy white, full planning flexibility, system can be produced up to a height of 375 cm in on piece





SHELVING SYSTEM SOLUTION S 28

for home office application

Finish veneer walnut and veneer satin walnut, center wall panels with individual starburst pattern, drawer fronts with high gloss lacquer finish





SHELVING SYSTEM S 28

for home office application

wall panels in veneer oak sand, sideboard and stack shelves in
eco leather finish, glass door unit with tinted glass front











WRITING DESK S 28



Counter top completely clad in eco leather,
integrated cable feed through, cover in eco leather





SCHMALENBACH DESIGN HANDMADE IN GERMANY.

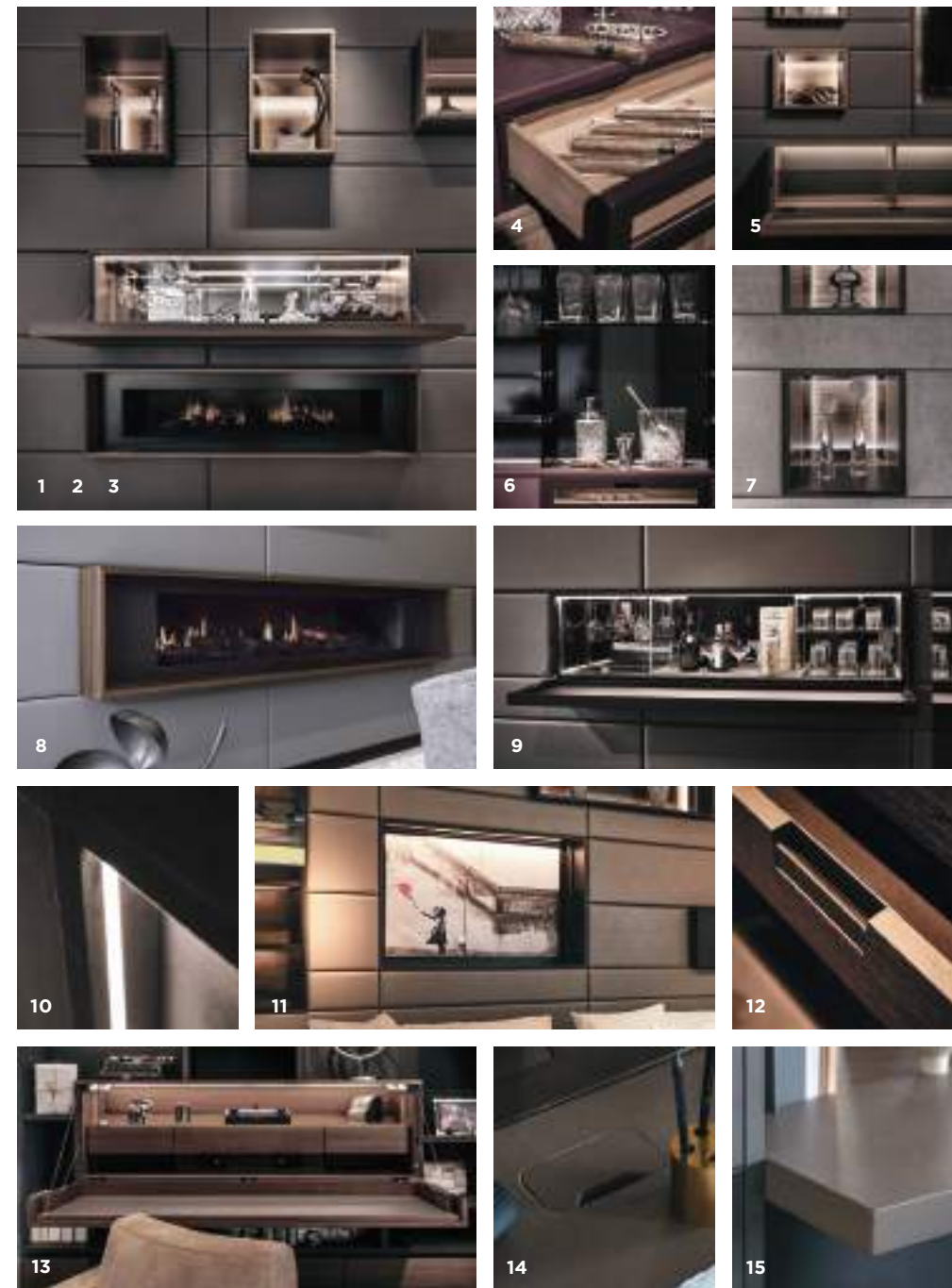
Hand made in Oberberg: wardrobes, built in cabinets, shelving systems, sideboards, office furniture. What the 35 employees of our manufacturing in Gummersbach produce has been well recognized worldwide within a very short time, from Los Angeles to London and Amsterdam, up to St. Petersburg and Moscow.

More and more people love the idea of creating their cabinetry individually and having it produced in high quality. Interesting details inclusive: e.g. integrated bar solutions, different methods of integrating TV or wall coverings in fabric or eco leather.

Additionally it is an interesting experience to work with a young and engaged team of designers and architects, who make the realisation of exclusive design furniture a real event. Make your try!



WARDROBE ACCESSORIES



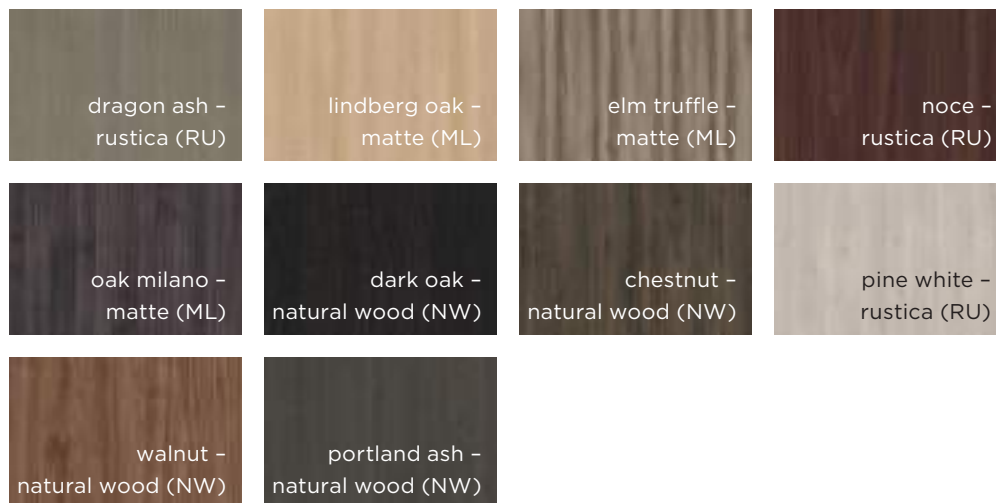
- 1 / 2 / 3 Wall paneling in eco leather / flip down bar unit / integrated electrical fireplace
- 4 Drawer with integrated humidior
- 5 Flip down AV storage closet with integrated LED light
- 6 Bar interior for glasses and spirits
- 7 Lighted accessories niche
- 8 Integrated electrical fireplace
- 9 Bar cabinet with flip down front and bar interior
- 10 Integrated LED strip lights
- 11 TV niche and electrical TV lift
- 12 Recessed leather handle
- 13 Flip down desk unit with work space accessories
- 14 Cable feed through in eco leather finish
- 15 Desk top in eco leather finish

SURFACES

MELAMINE UNICOLOURED



WOOD MELAMINE WITH PATTERN



TEXTURES



classymatt, smooth surface,
sensitively designed with
gloss effect

a soft texture for
pleasing haptics

a soft texture with
a micro structure

TEXTURES



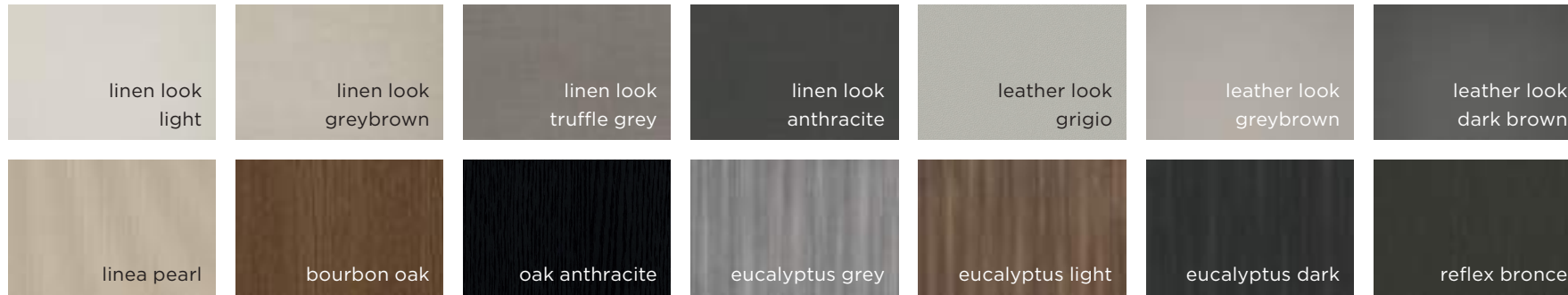
trendy texture with a striking
wooden structure,
that convices with a gloss-
matt-effect.

wood grain structure like
natural wood finish

this texture is the best
solution if very matte optics
is required.
A soft texture for pleasing
haptics

SURFACES

MELAMINE WITH TEXTURE



MELAMINE WITH MATTE OR GLOSS SURFACE



LACQUER MATTE

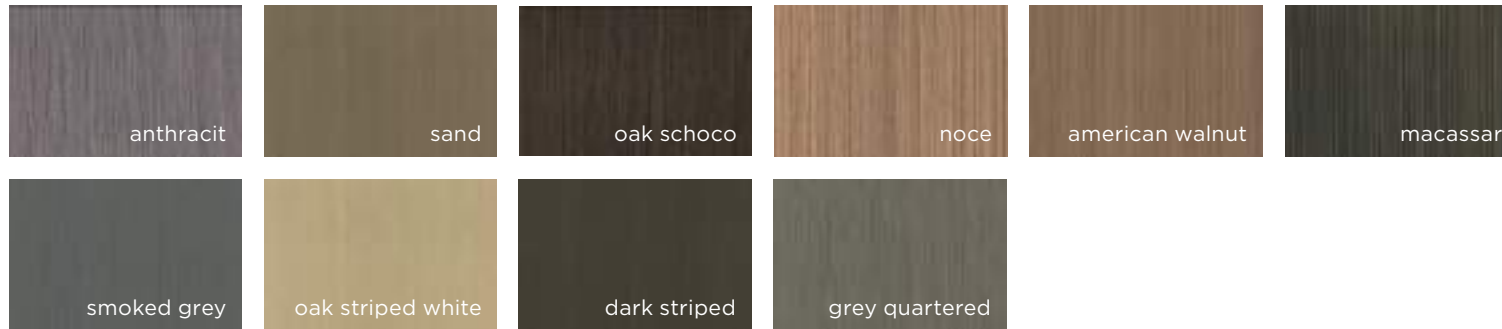


COLOUR SYSTEMS

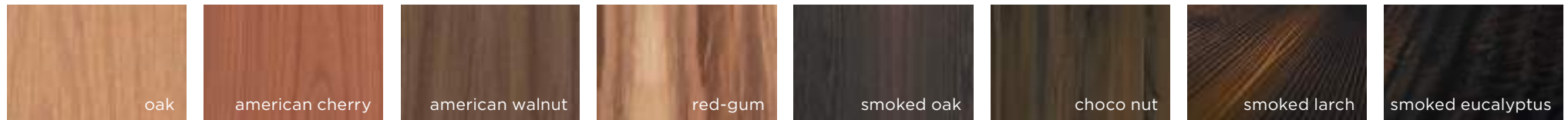


SURFACES

FINELINE VENEER



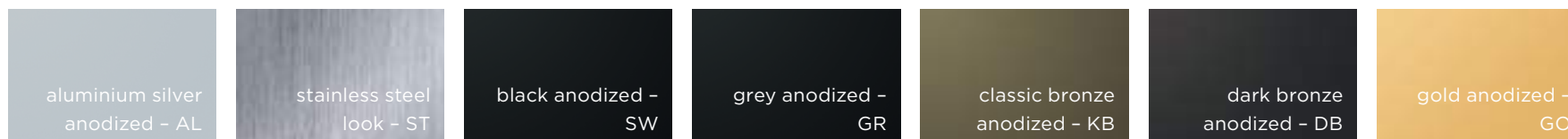
REAL WOOD VENEER



ECO LEATHER

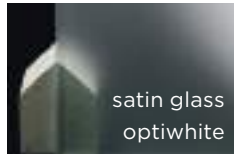
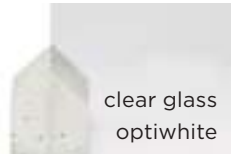


ALUMINUM FINISHES

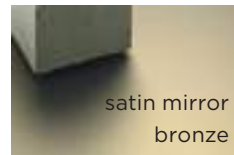
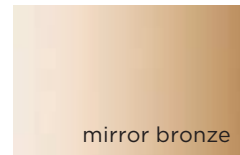
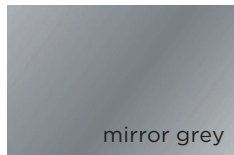
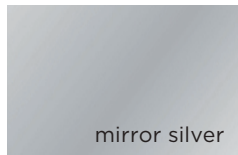


SURFACES

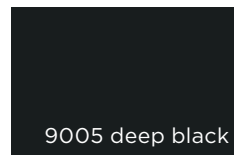
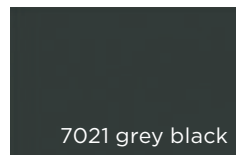
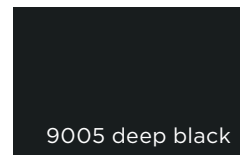
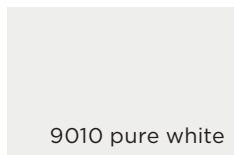
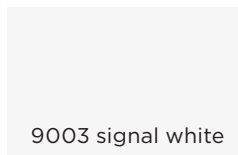
GLASS AND PARSOL GLASS



MIRROR AND SATIN MIRROR



CLEAR OR SATIN GLASS BACK LACQUERED



STRUCTURED AND MESH GLASS (for glass sliding doors only)





© Schmalenbach Design GmbH

Bunsenstraße 6
51647 Gummersbach
T +49 22 61 8 15 86-0

www.schmalenbach-design.de
info@schmalenbach-design.de

Showroom
Bunsenstraße 6