



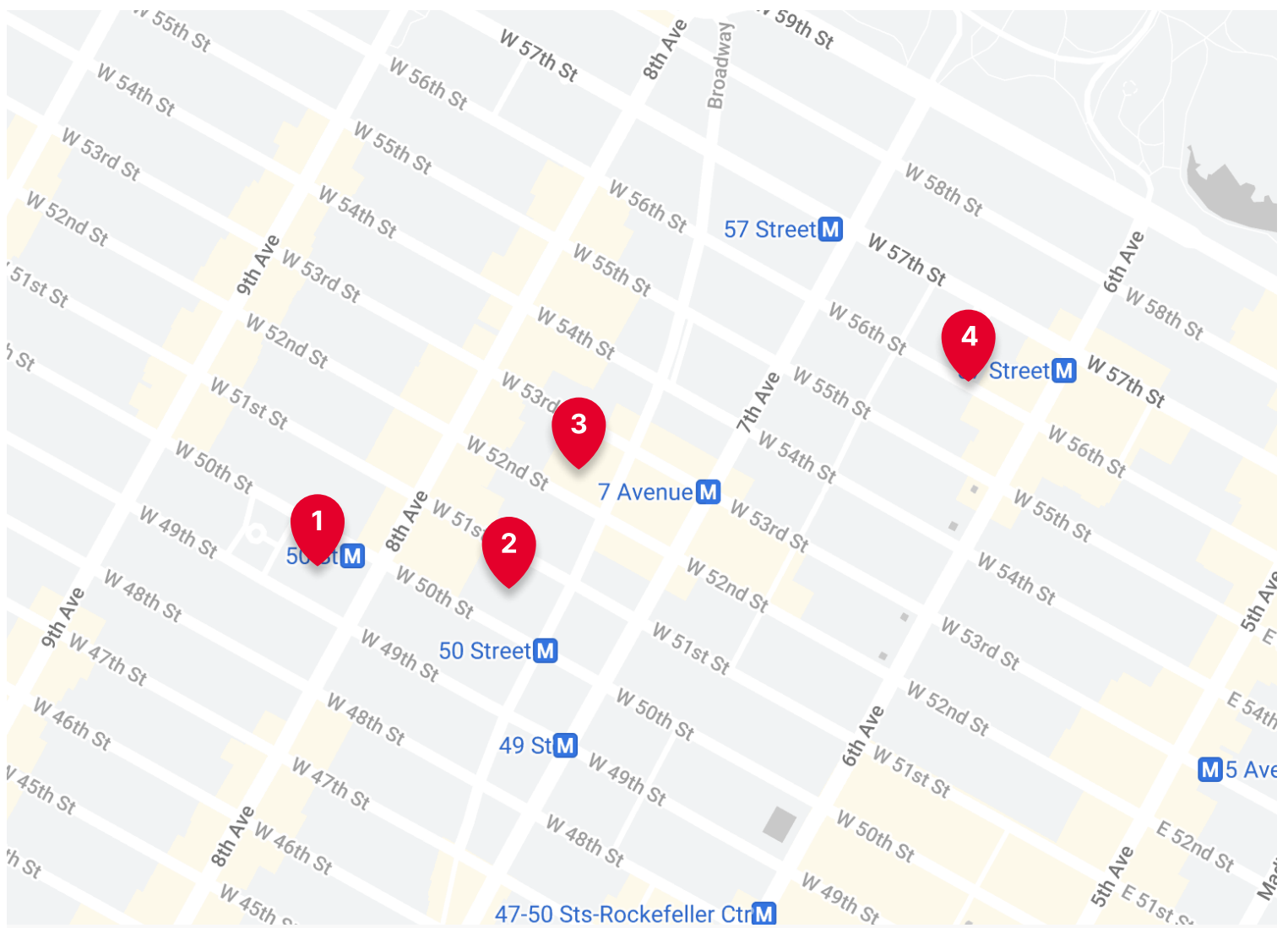
Cushman & Wakefield

New York Office Space

Lisa Samuels

lisa@cushmanwakefield.com

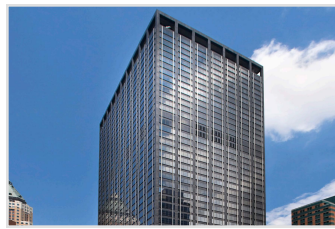




#	ADDRESS	BUILDING SIZE	FLOORS
1	825 8th Avenue	2,051,943 sqft	49
2	1633 Broadway	2,499,105 sqft	48
3	1675 Broadway	880,000 sqft	35
4	106 West 56th Street	90,000 sqft	26



Worldwide Plaza
825 8th Avenue
New York, New York
10019



Paramount Plaza
1633 Broadway
New York, New York
10019



1675 Broadway
1675 Broadway
New York, New York
10019



The Six
106 West 56th Street
New York, New York
10019

PROPERTY TYPE

Office

Office

Office

Office

FLOORS

49

48

35

26

BUILDING SIZE

2,051,943 sqft

2,499,105 sqft

880,000 sqft

90,000 sqft

BUILDING CLASS

A

A

A

A

YEAR RENOVATED

2013

2015

2000

N/A new construction

YEAR BUILT

1989

1971

1989

2020

PARKING

475 Covered Spaces

250 Covered Spaces

On-site valet

No on-site parking

AMENITIES

24h Access, Fitness center, Restaurant, Banking, On-site management, Security system

24h Access, Banking, Fitness center, Restaurant, Security system, On-site management

24h Access, Banking, Atrium, Security system

24h Access, Concierge, Wi-Fi, Stantalone HVAC, Food service

Worldwide Plaza

825 8th Avenue, New York, New York 10019



Worldwide Plaza

825 8th Avenue, New York, New York 10019



Floor plates range from 20,000 to 35,000 square feet apiece with 13-foot average slab heights. Sub lease options available. Amenities include a 28,000 square foot outdoor retail plaza, 475-space parking garage, 35,000 square foot health club, five-stage theater, tenant-controlled HVAC and a 24-hour lo...

[View building in app](#)

AVAILABLE SPACE

Partial 18th Fl... 9,376 sqft \$48.00 psf

Partial 20th Fl... 12,350 sqft \$65.00 psf

Walk Score®
Walker's Paradise



99

Transit Score®
Rider's Paradise



100

Bike Score®
Biker's Paradise



94

BUILDING DETAILS

Property Type: Office

Floors: 49

Building Size: 2,051,943 sqft

Building Class: A

Year Renovated: 2013

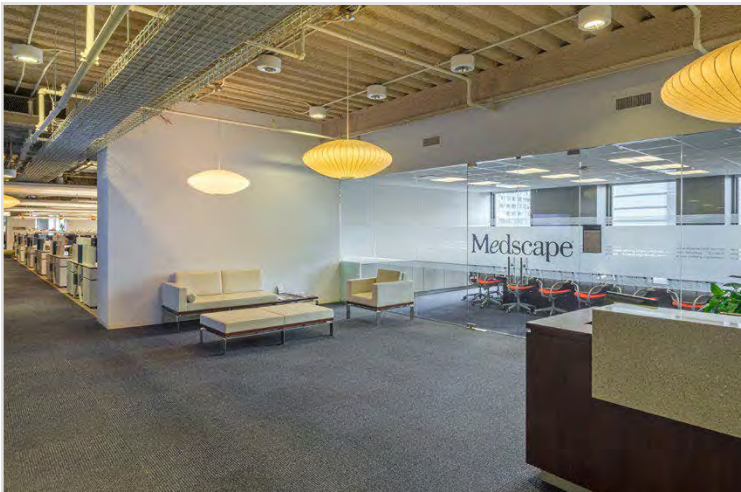
Year Built: 1989

Parking: 475 Covered Spaces

Amenities: 24h Access, Fitness center, Restaurant, Banking, On-site management, Security system

Worldwide Plaza

825 8th Avenue, New York, New York 10019





Worldwide Plaza

825 8th Avenue, New York, New York 10019



Partial 18th Floor, Suite A

- Built out space, ready for move in
- Sublease opportunity short term



Partial 20th Floor, Suite B

- Can be combined with adjacent floors
- Good space, buildout in progress

SQFT AVAILABLE

9,376 sqft

12,350 sqft

PRICE / SQFT

\$48.00

\$65.00

DATE AVAILABLE

Jun 1, 2023

Aug 3, 2023

LEASE TERM

2 years+

5 years+

FURNISHED

Yes

Yes

CEILING HEIGHT

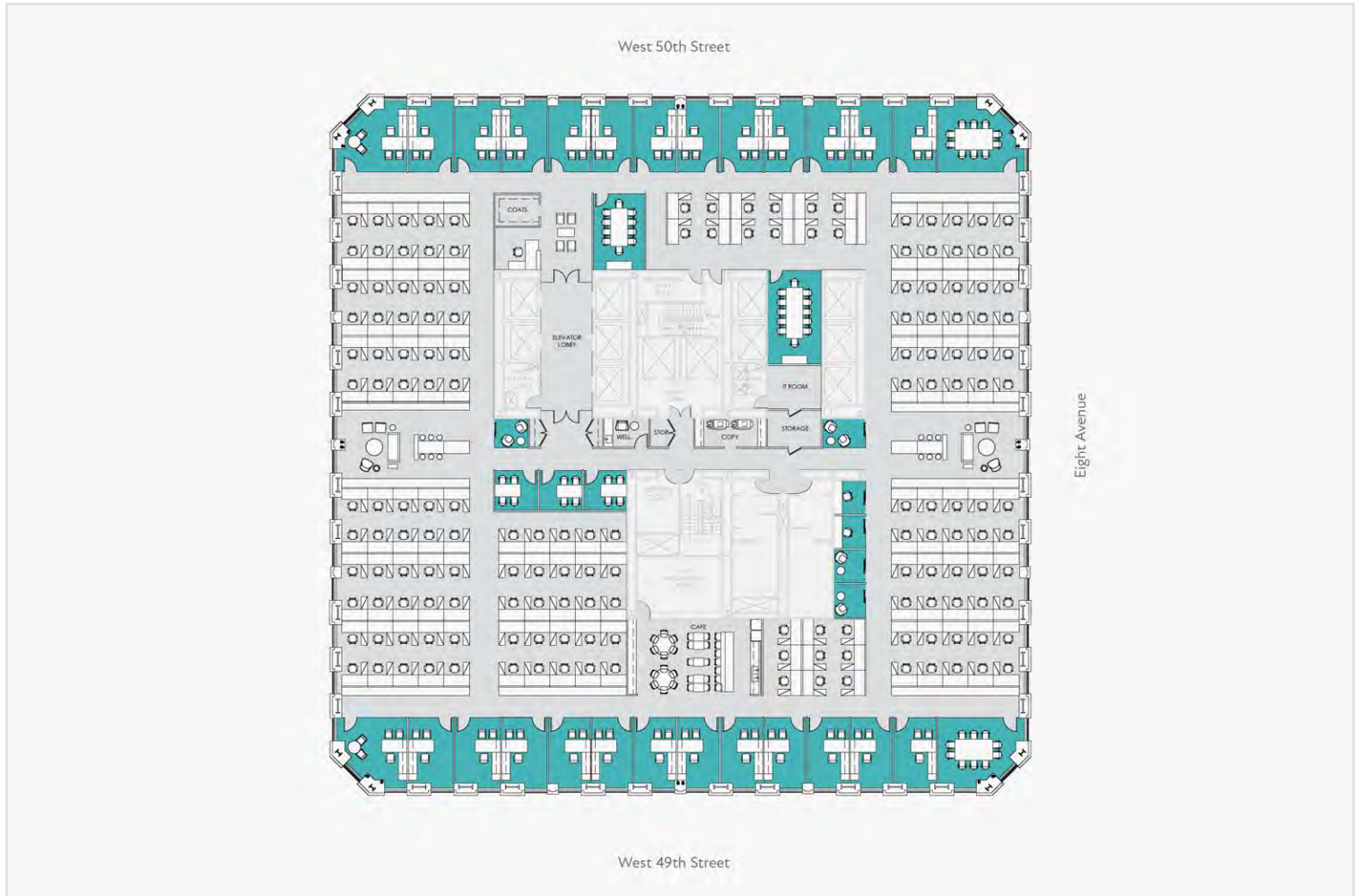
13'

13'



Partial 18th Floor, Suite A

825 8th Avenue, New York, New York 10019



- Built out space, ready for move in
- Sublease opportunity short term



Partial 18th Floor, Suite A

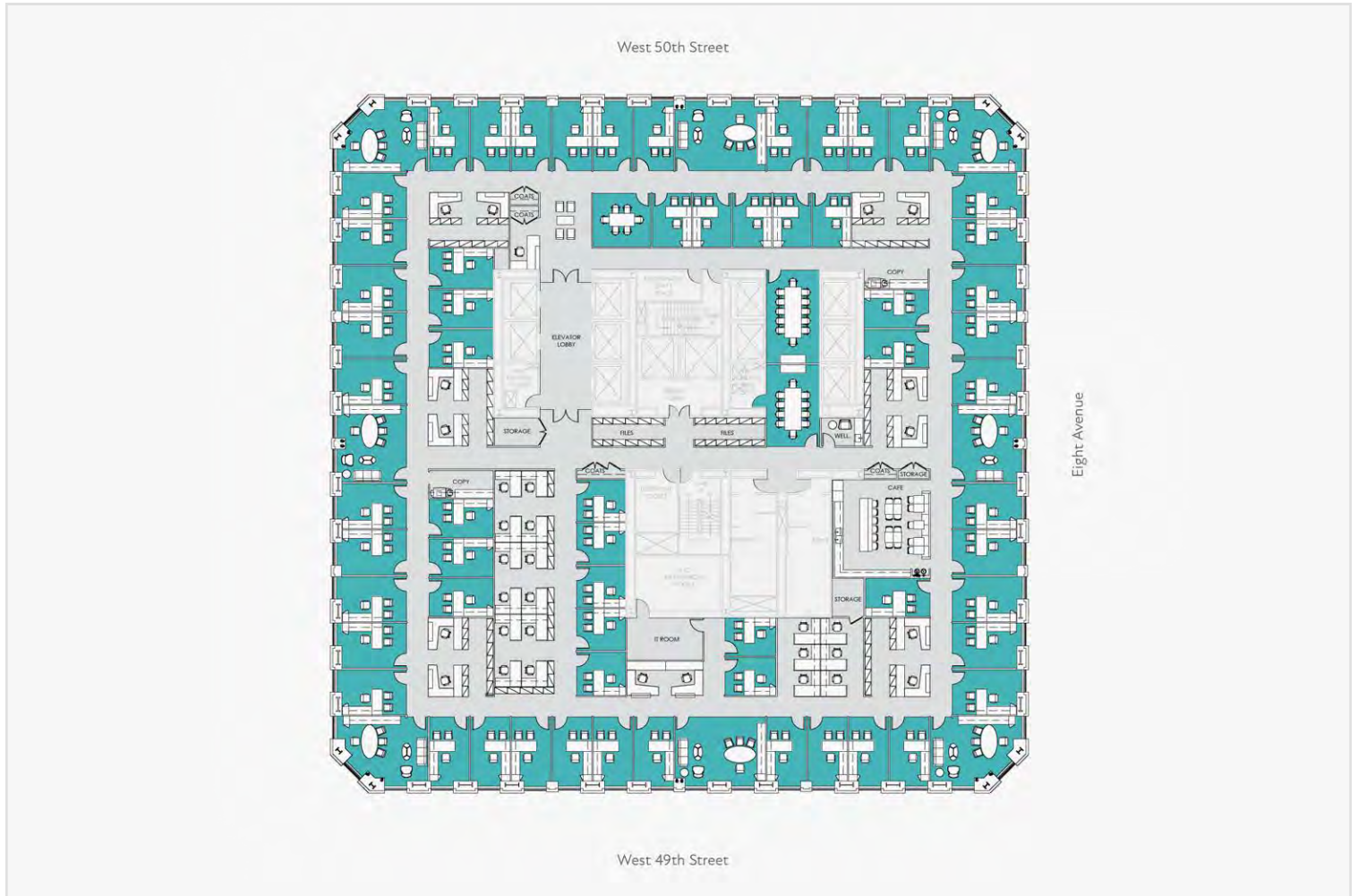
825 8th Avenue, New York, New York 10019





Partial 20th Floor, Suite B

825 8th Avenue, New York, New York 10019



- Can be combined with adjacent floors
- Good space, buildout in progress



Partial 20th Floor, Suite B

825 8th Avenue, New York, New York 10019



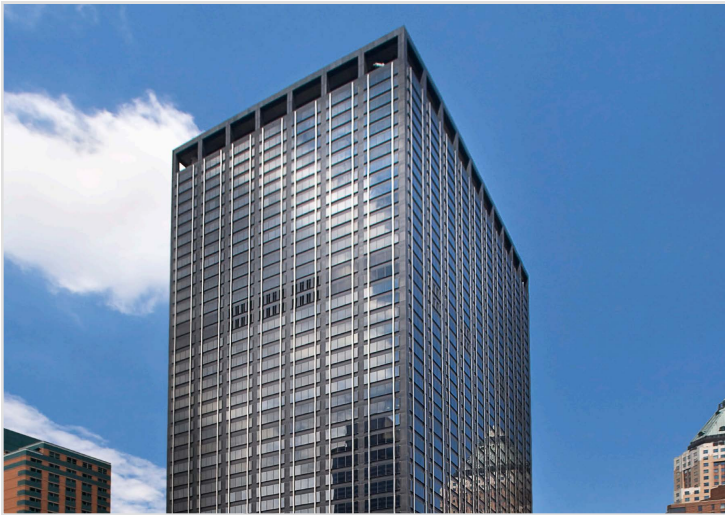
Paramount Plaza

1633 Broadway, New York, New York 10019



Paramount Plaza

1633 Broadway, New York, New York 10019



This property offers premier office space for a wide variety of leading industries. The 48-story, 2,500,000 square foot building is LEED Gold certified. The availability of the partial 22nd floor for sublease is a great opportunity, and gives you access to some of New York's most popular cultur...

[View building in app](#)

AVAILABLE SPACE

Partial 22nd,...	18,501 sqft	\$55.00 psf
------------------	-------------	-------------

Partial 22nd,...	13,195 sqft	\$55.00 psf
------------------	-------------	-------------

Walk Score®
Walker's Paradise



99

Transit Score®
Rider's Paradise



100

Bike Score®
Biker's Paradise



91

BUILDING DETAILS

Property Type: Office

Floors: 48

Building Size: 2,499,105 sqft

Building Class: A

Year Renovated: 2015

Year Built: 1971

Parking: 250 Covered Spaces

Amenities: 24h Access, Banking, Fitness Center, Security system, On-site management

Paramount Plaza

1633 Broadway, New York, New York 10019





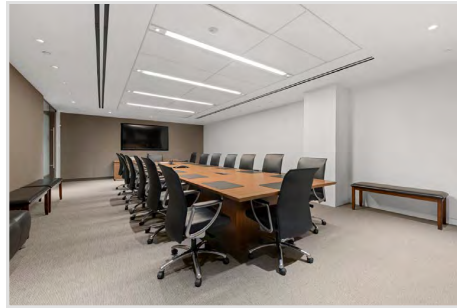
Paramount Plaza

1633 Broadway, New York, New York 10019



Partial 22nd, Suite K

- Sublease space
- Larger of the two footprints



Partial 22nd, Suite A

- Sublease space
- This footprint has more open desking

SQFT AVAILABLE

18,501 sqft

13,195 sqft

PRICE / SQFT

\$55.00

\$55.00

DATE AVAILABLE

Jun 1, 2023

Jun 1, 2023

LEASE TERM

Negotiable

Negotiable

FURNISHED

Yes

Yes

CEILING HEIGHT

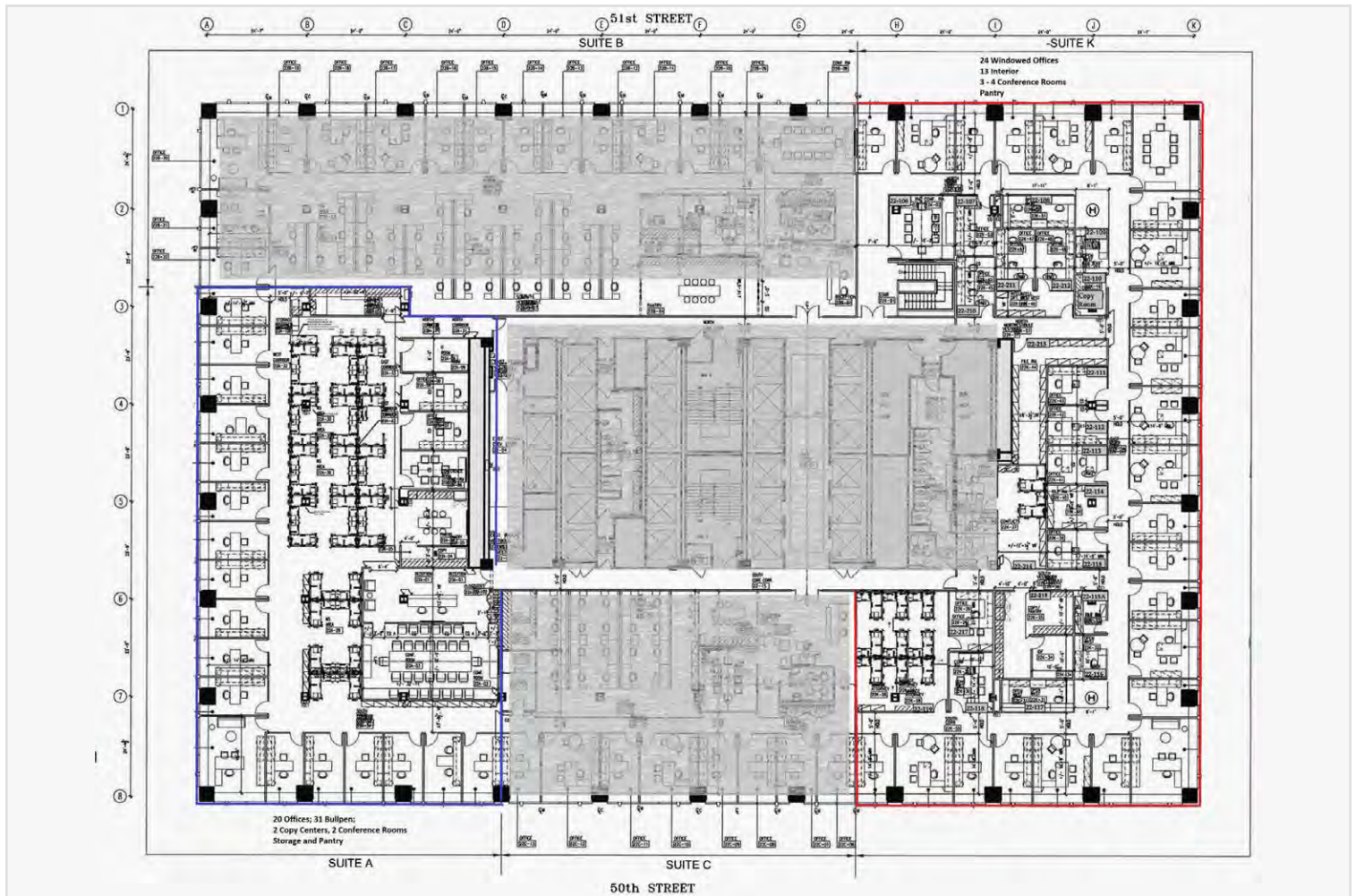
12'

12'



Partial 22nd, Suite K

1633 Broadway, New York, New York 10019



- Sublease space
- Larger of the two footprints



Partial 22nd, Suite K

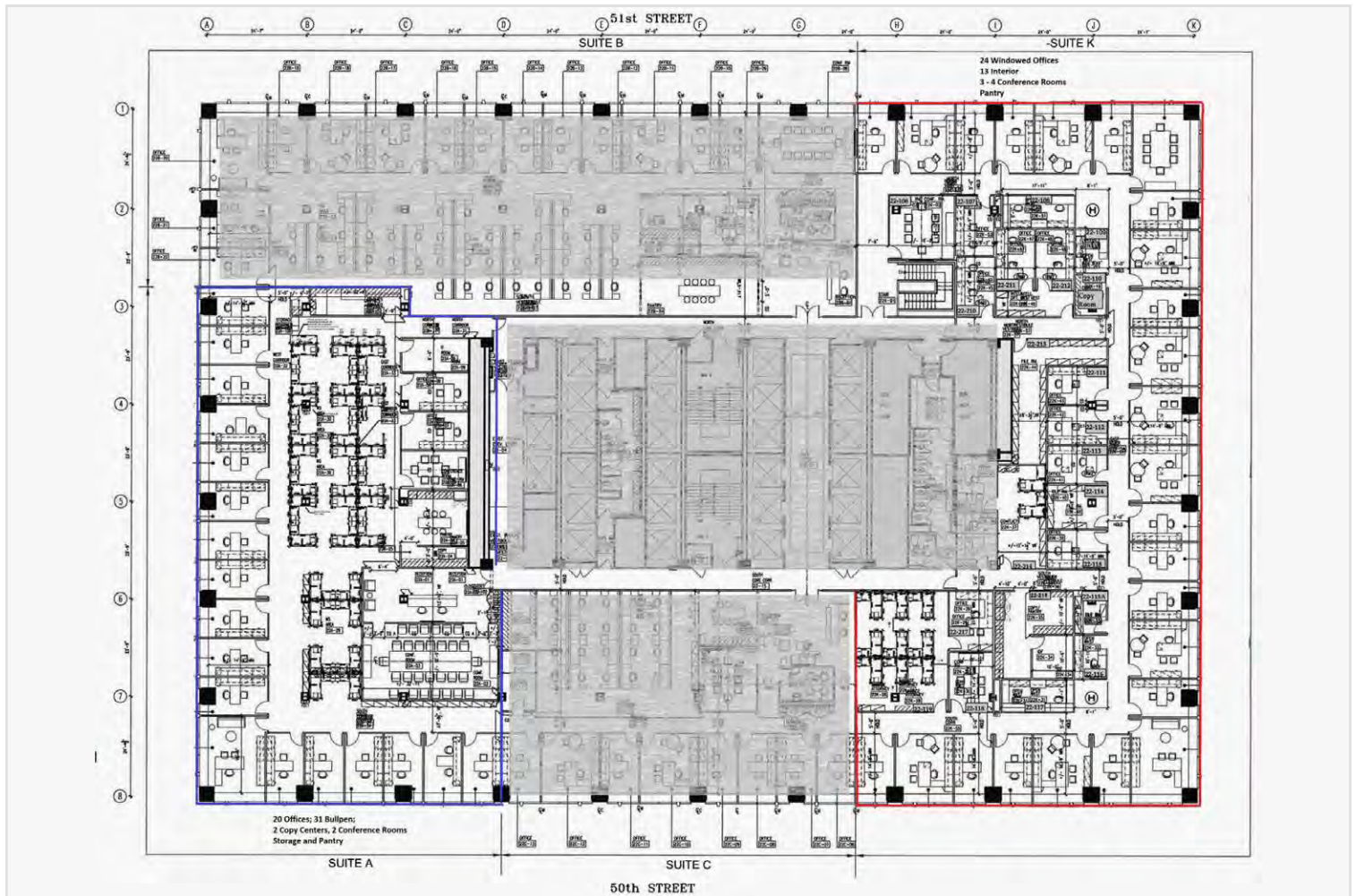
1633 Broadway, New York, New York 10019





Partial 22nd, Suite A

1633 Broadway, New York, New York 10019



- Sublease space
- This footprint has more open desking



Partial 22nd, Suite A

1633 Broadway, New York, New York 10019



1675 Broadway

1675 Broadway, New York, New York 10019



1675 Broadway

1675 Broadway, New York, New York 10019



1675 Broadway is a postmodernist style tower with a granite curtain wall facade offering views of Times Square, the Hudson River, Central Park, and the Midtown skyline. The property is Leed Gold and WiredScore Platinum certified. Less parking than the other options as it has a garage with valet rat...

[View building in app](#)

AVAILABLE SPACE

Partial 22nd,... 18,501 sqft \$55.00 psf

Partial 22nd,... 13,195 sqft \$55.00 psf

Walk Score®
Walker's Paradise



99

Transit Score®
Rider's Paradise



100

Bike Score®
Biker's Paradise



91

BUILDING DETAILS

Property Type: Office

Floors: 35

Building Size: 880,000 sqft

Building Class: A

Year Renovated: 2000

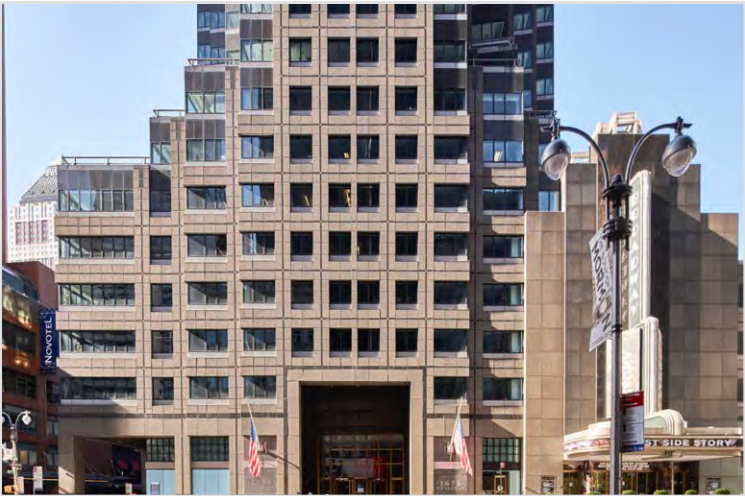
Year Built: 1989

Parking: On-site valet

Amenities: 24h Access, Banking, Atrium, Security system

1675 Broadway

1675 Broadway, New York, New York 10019





1675 Broadway

1675 Broadway, New York, New York 10019



Partial 22nd, Suite K

- Full kitchen
- 4 private offices
- 81 workstations



Partial 22nd, Suite A

- Full kitchen
- 4 private offices
- 81 workstations

SQFT AVAILABLE

18,501 sqft

13,195 sqft

PRICE / SQFT

\$55.00

\$55.00

DATE AVAILABLE

Jun 1, 2023

Jun 1, 2023

LEASE TERM

Negotiable

Negotiable

FURNISHED

Yes

Yes

CEILING HEIGHT

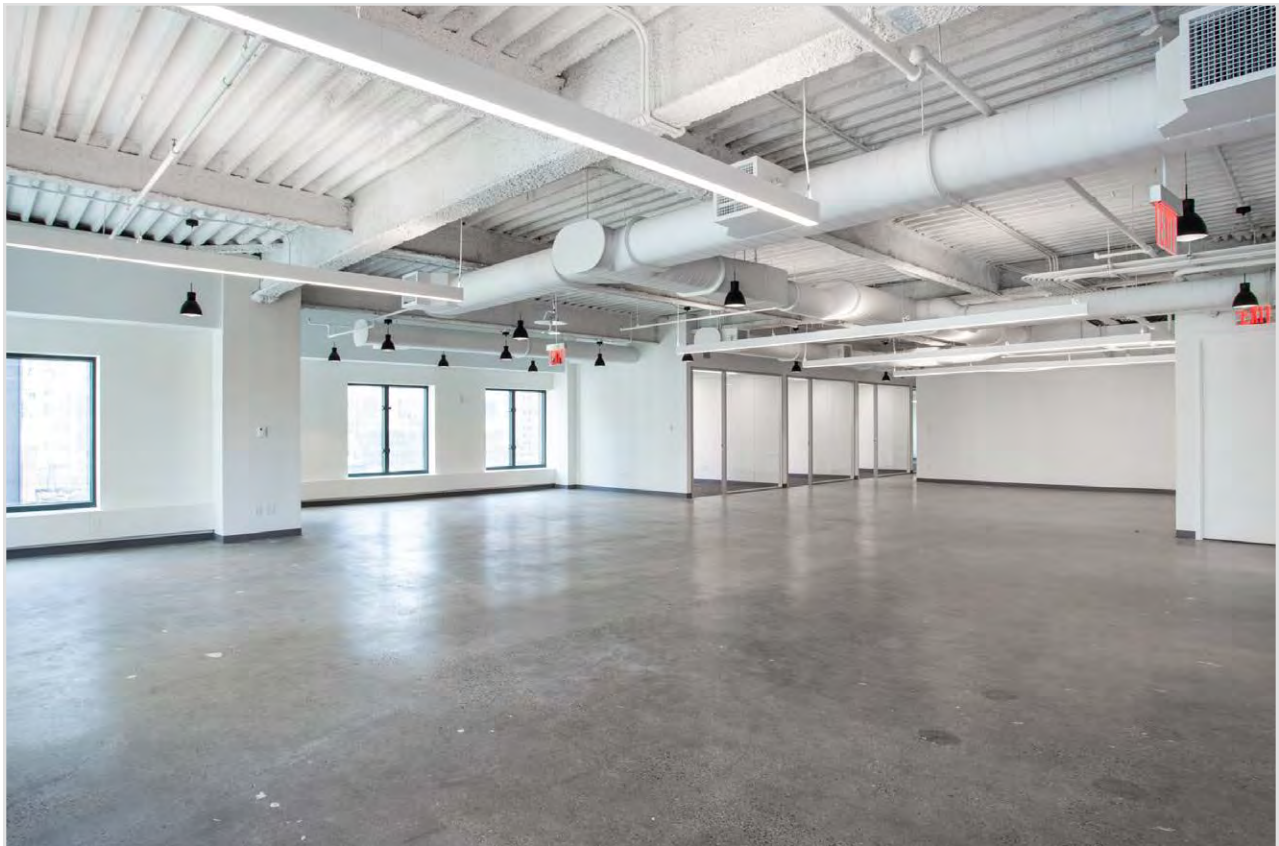
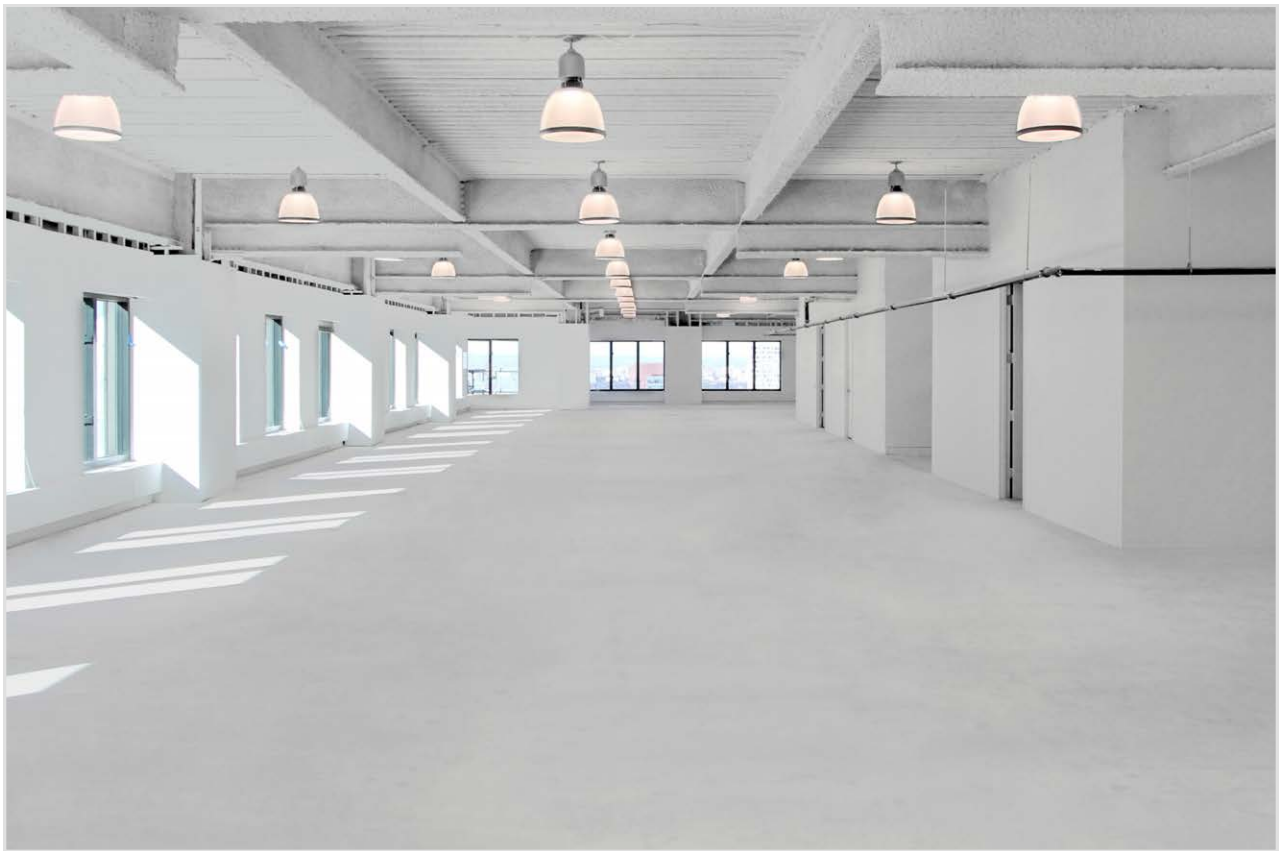
12'

12'



Partial 18th Floor, Suite A

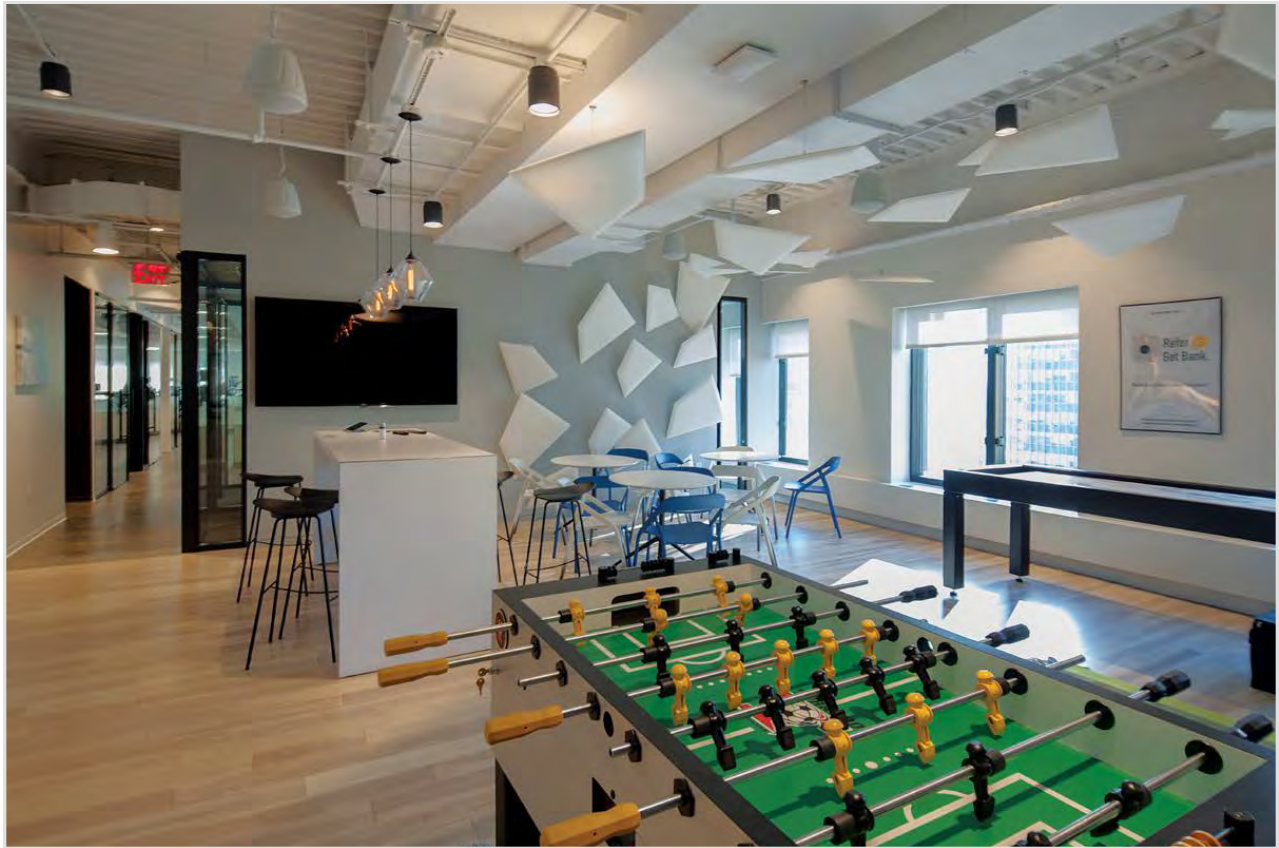
1675 Broadway, New York, New York 10019





Partial 18th Floor, Suite B

1675 Broadway, New York, New York 10019



The Six

106 West 56th Street, New York, New York 10019



The Six

106 West 56th Street, New York, New York 10019



Note: Smaller spaces, so we need to look into combining multiple spaces to get the square footage we need. Brand new construction, 90,000 sqft, 26 stories full of brand new, never occupied spaces boasting a boutique look and feel. The floors feature 10 foot high ceilings with private ba...

[View building in app](#)

AVAILABLE SPACE

Entire 2nd Floor 4,524 sqft \$89.00 psf

Entire 6th Floor 4,524 sqft \$92.00 psf

Walk Score®
Somewhat Walkable



63

Transit Score®
Good Transit



53

Bike Score®
Biker's Paradise



92

BUILDING DETAILS

Property Type: Office

Floors: 26

Building Size: 90,000 sqft

Building Class: A

Year Renovated: N/A new construction

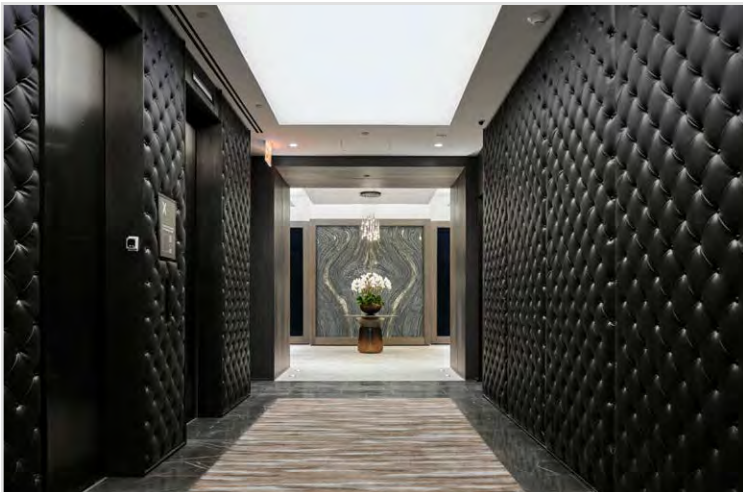
Year Built: 2020

Parking: No on-site parking

Amenities: 24h Access, Concierge, Wi-Fi, Standalone HVAC, Food service

The Six

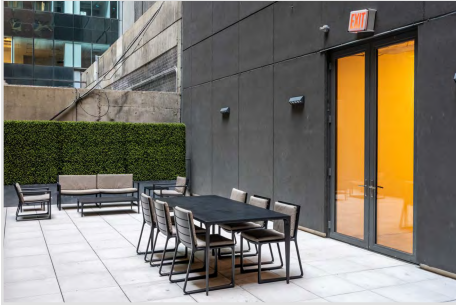
106 West 56th Street, New York, New York 10019





The Six

106 West 56th Street, New York, New York 10019



Entire 2nd Floor

- New space, never occupied
- Private balcony
- Open floor plan



Entire 6th Floor

- New space, never occupied
- Private restrooms
- Can be combined with other spaces up to 37,284 sqft

SQFT AVAILABLE

4,524 sqft

4,524 sqft

PRICE / SQFT

\$89.00

\$92.00

DATE AVAILABLE

Jun 1, 2023

Jun 1, 2023

LEASE TERM

Negotiable

Negotiable

FURNISHED

No

No

CEILING HEIGHT

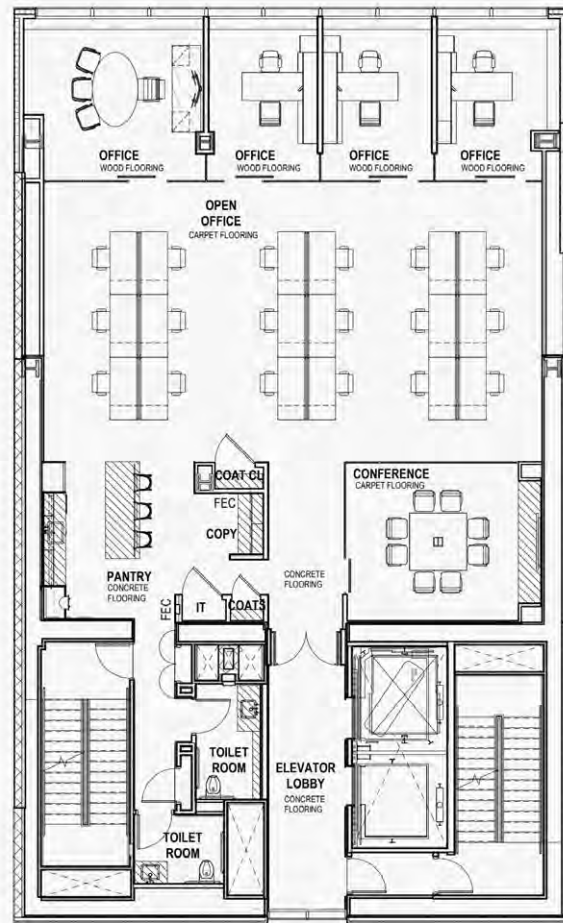
10'-13'6"

10'



Entire 2nd Floor

106 West 56th Street, New York, New York 10019



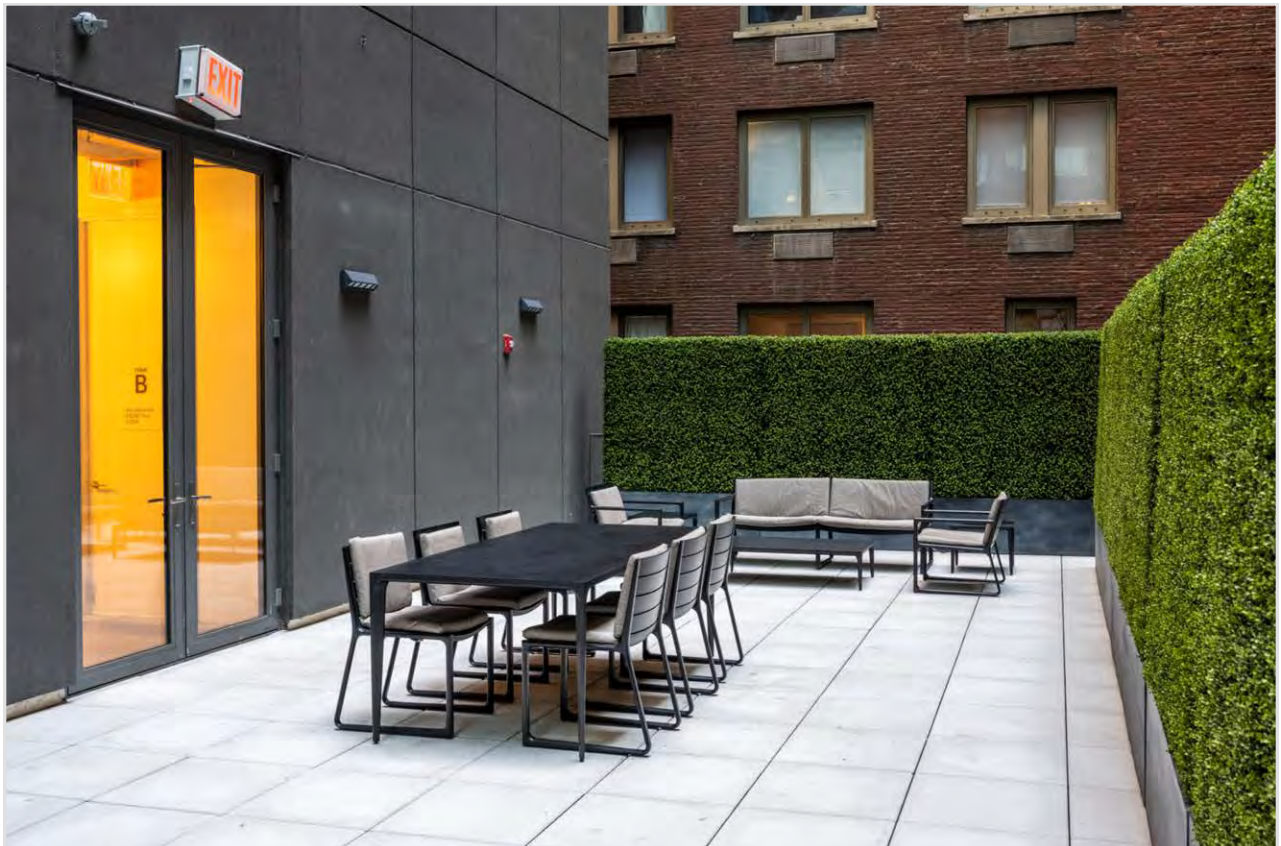
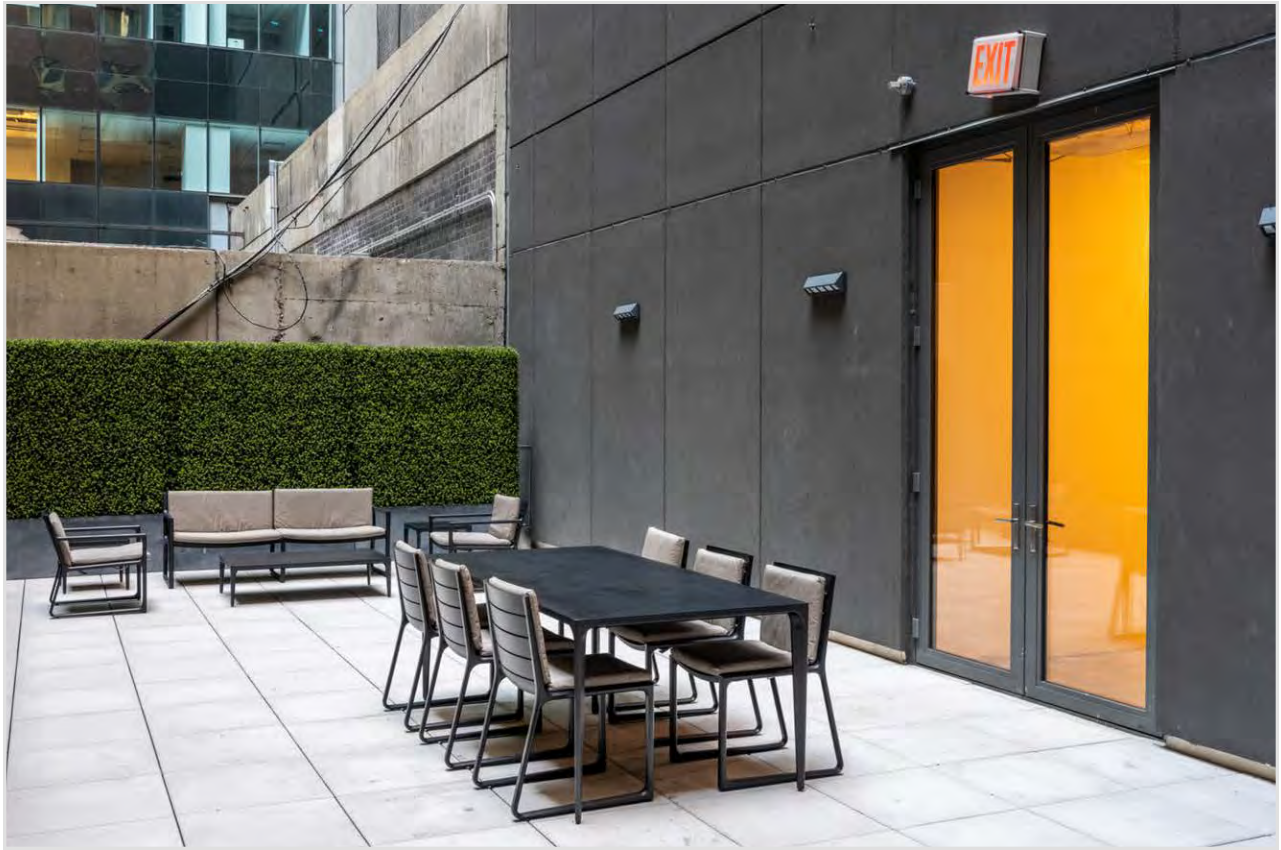
THESIX56.COM

- New space, never occupied
- Private balcony
- Open floor plan



Entire 2nd Floor

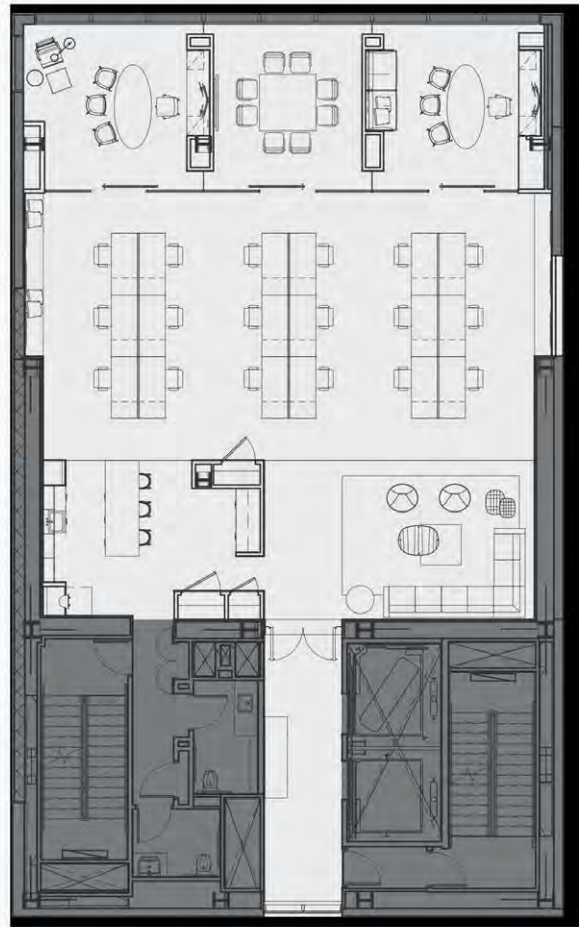
106 West 56th Street, New York, New York 10019





Entire 6th Floor

106 West 56th Street, New York, New York 10019



THESIX56.COM

- New space, never occupied
- Private restrooms
- Can be combined with other spaces up to 37,284 sqft



Entire 6th Floor

106 West 56th Street, New York, New York 10019

