



Landscape  
Brochure

Designed  
for Nature



# Welcome to Roberts Limbrick

Designed for Life

We are a team of over 100 architects, designers and creatives working across all project types. Our portfolio includes a wide range of successful projects throughout the UK in both the public and commercial sector.

1 What we do →



Spirax-Sarco Engineering Headquarters

# Landscape Architecture

Our team creates dynamic outdoor spaces which bring people and nature together. Every design seeks to benefit communities and work in harmony with the surrounding environment.

## In-house team

Working as part of the design team at all stages of a project, our in-house team ensures landscape is fully considered and integrated into a scheme. Our expertise helps to enhance our designs, ensuring quality external spaces for both public and private uses as well as integrating functional aspects, such as sustainable drainage systems and habitat creation.



# Our landscape services

Our team offers a range of services, covering landscape design, planning and management. We work at all project stages, across all sectors and scales of schemes. Services include:

- Concept design and feasibility studies
- Landscape appraisals
- Landscape masterplanning
- Detailed hard and soft landscape design
- Play space design
- Inputs into design & access statements and design codes
- Assistance with BNG
- Public realm, public art, and green infrastructure strategies
- Landscape maintenance plans
- Procurement advice

## 2 Our Projects →



University of the West of England (UWE)

Our projects

## University of the West of England (UWE)

Education

Our team has carried out several projects for UWE, including reviewing the Frenchay and Bower Aston campuses, and designing and delivering the Centre for Fine Print and Research and Future Space innovation centre.

Client

University of the West of England

Location

Bristol

Our latest project at UWE sees the refurbishment of W Block at the Frenchay Campus. Our team has developed proposals to enhance the surrounding public realm. This includes a wildlife garden, tree glade, outdoor workspace, wildlife ponds, and enhanced arrival spaces.

We worked in close collaboration with key stakeholders at UWE to ensure the proposals for the new planting provided significant biodiversity and health and wellbeing benefits, such as bee friendly planting and edible plant species.



# Waddesdon Sixth Form

Education

Our education and landscape teams designed and delivered a new sixth form building and courtyard space for Waddesdon C of E Secondary School.

The two-storey building offers students dynamic learning spaces, including modern classrooms, dedicated study areas, collaborative workspaces, Innovation Rooms, a café and a versatile double-height auditorium with retractable seating.

The building is set around a new courtyard space providing an attractive green outlook from the sixth form building, offering social spaces for pupils framed by planting.

## Client

Waddesdon C of E Secondary School

## Location

Waddesdon, Buckinghamshire



Our projects

# Warden Hill Primary School

Education

Roberts Limbrick worked with Gloucestershire County Council to find the best solution for improving Warden Hill's facilities.

After reviewing multiple strategies, the chosen option was to deliver a new building and partially demolish the existing buildings.

To enhance the existing external learning environment, our landscape team worked with the school to provide new and refurbished outdoor spaces, including external classrooms, social seating and dining areas, an outdoor reading room, orchard and habitat areas, formal hard play area, new car parking facilities and an improved arrival experience.

## Client

Gloucestershire County Council

## Location

Cheltenham, Gloucestershire



# Brough Active Environments

Sport & Leisure

Staffordshire Moorlands District Council have appointed Roberts Limbrick to improve and update the existing leisure centre to better meet the needs of the local community.

A new public entrance space will be created under the Sports England Active Environments initiative. The proposals, which were developed through stakeholder consultation, create a diverse, welcoming space for all, encouraging a variety of formal and informal activities.

The space is focused on a central lawn with opportunities for informal play through undulating mounds, incidental play and fun floor markings. An equipped outdoor gym, pétanque court and games tables offer more formal activities. There are a variety of seating opportunities including picnic spaces and hammocks, along with new planting areas.

**Client**  
Staffordshire Moorlands District Council

**Location**  
Leek, Staffordshire



# Kingston Leisure Centre

Sport & Leisure

Roberts Limbrick were appointed to design and deliver the replacement leisure centre within the heart of Kingston Upon Thames.

The landscape proposals create public realm to all sides of the new centre. A new entrance plaza provides a strong, formal green street offering clear pedestrian connections to the leisure centre from the town. The plaza is defined by a strong avenue of trees, set within raised lawns with attractive perennial planting, seating and natural stone paving.

To the east, the existing park space is to be enhanced with the creation of a community garden and growing space, orchard and wildflower meadows. The existing play area is relocated and improved with new equipment and a natural play trail.

**Client**  
Royal Borough of Kingston Upon Thames

**Location**  
Kingston Upon Thames



# Plasdŵr, Cardiff's garden city

Residential

Plasdŵr is Cardiff's new garden city which will be made up of 7,000 new homes, five new schools, and retail and leisure facilities located across five distinct, walkable neighbourhoods.

Around 40% of the site is made up of green infrastructure, including parks, community woodlands, sports pitches, green corridors, and allotments.

Teresa, who heads up our landscape team, has worked on the scheme for several years, leading on the development of the landscape vision for the site, including landscape masterplanning, design codes, public realm and public art strategies, and detailed open space proposals. She now provides strategic advice on the delivery of green infrastructure across the site.

Client

Redrow Homes,  
South Wales

Location

Cardiff



Image left

Redrow Homes / Aerial Photography Wales



## Gateway Linear Park

2023 will see the delivery of the first significant piece of public realm at Plasdŵr, the Gateway Linear Park. In conjunction with lead engineers Arup, the park has been designed to be a significant green and blue gateway corridor, which will lead into the heart of Plasdŵr. A series of ponds, swales, and wildflower meadows meander through the space, with footpaths and cycleways, seating areas, public art and play opportunities.

# Mornings Mill Residential Development

Residential

Our landscape and residential teams prepared detailed proposals for a 700 mixed tenure scheme at Mornings Mill Farm in Lower Willingdon, East Sussex.

The designs for this exciting landscape led development required our urban design and landscape teams to prepare a masterplan that balances this new residential settlement with a range of other uses including community facilities, a new school, play/leisure facilities, commercial/employment and medical centre.

A variety of green infrastructure corridors build upon existing public footpath networks (including the '1066' route) and has resulted in a series of high-quality spaces integrating SuDS throughout.



## Public Realm

A new public square integrating rain gardens, informal play and social spaces sits at the heart of the new local centre.

# Lydney Masterplan

Urban design

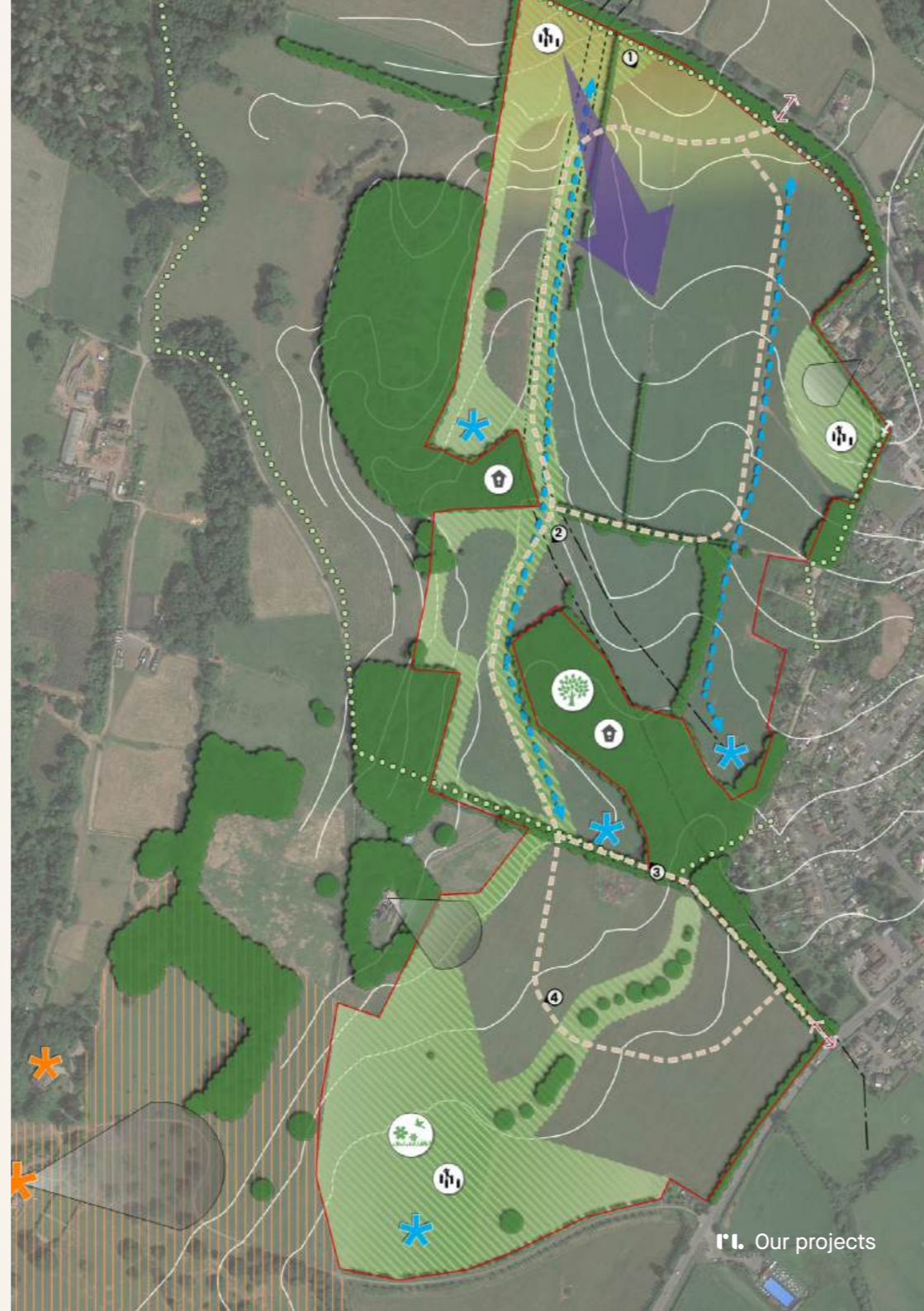
Residential

Our masterplanning and landscape teams were appointed by Mactaggart & Mickel Strategic Land to support them with initial design work for a large residential led scheme on the edge of Lydney.

Client  
**Mactaggart & Mickel Strategic Land**

Location  
**Lydney, Gloucestershire**

Our landscape architects undertook a high level landscape and visual appraisal, identifying the site's landscape constraints and opportunities, such as key views into and out of the site, locations for green corridors, green infrastructure and SuDS, all of which fed into a landscape-led masterplan.



# Renishaw, Miskin

Commercial

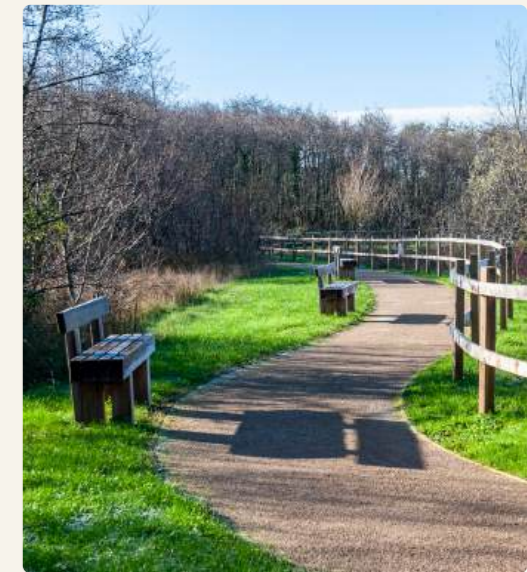
Our landscape team have been working with Renishaw to enhance the external spaces at their Miskin campus.

Client  
**Renishaw PLC**

Location  
**Miskin, South Wales**

We have designed a range of new and enhanced external spaces with strong focus on health and wellbeing.

These include a large central garden with outdoor dining areas, lawns and ornamental planting, linked to the adjacent refurbished wellness centre. Smaller breakout and picnic spaces have been located across the campus including around a large wetland basin, along with a 2km perimeter walking route.



# Spirax-Sarco Engineering Headquarters

Commercial

We were appointed to replace the current extension at the company's Grade II listed headquarters with a contemporary, four-storey office.

The new design needed to be sympathetic to the listed building and highly sustainable. The building has been accredited with BREEAM 'Outstanding', a rating which recognises the top 0.5% of sustainable new builds and is the highest rating BREEAM offers.

The redevelopment of the building offered an opportunity to enhance the existing outdoor space around the replacement building, alongside creating a haven for nature to thrive in line with the group's focus on biodiversity. The existing underused garden space has been redesigned as a green oasis with a water feature, outdoor workspaces and new tree and planting areas.

Client

Spirax-Sarco Engineering plc

Location

Cheltenham, Gloucestershire



## Biodiversity

A new biodiversity area is to be created alongside the River Chelt which runs through the site, with wildflower meadows, native tree, hedge and shrub planting, a wildlife pond and the addition of bird and bat boxes.

# Safran Landing Systems, Gloucester

Commercial

Our team has designed a replacement office building and conference centre for Safran Landing Systems in Gloucester.

A key aspect to the project is a new health and wellbeing garden that our team has designed. This space will transform an area of hard standing into a small, green oasis at the heart of the site. Outdoor seating, dining and workspaces are proposed, set amongst swathes of planting, and focused around a central lawn, offering a flexible soft space. Bespoke elements such as aviation inspired laser cut metal work art panels and benches will add to the character of the garden.

As part of the new office building, the site's existing frontage will be improved through new planting, introduction of swales and wildflower meadows and a high-quality entrance plaza inspired by the adjacent Art Deco building.

Client  
Safran Landing Systems

Location  
Gloucester,  
Gloucestershire



## 'Green streets'

New green streets will sit either side of the office building providing both a green outlook from within the building and outdoor seating pockets for staff to enjoy.



# Maindee Public Realm Regeneration

Urban design

Our urban design and landscape teams have worked with Chris Jones Studio and local group Maindee Unlimited to create a regeneration plan for the area.

This has involved extensive public consultation to discover and address residents' priorities, which include more trees and greenery, more spaces to sit out, and areas for young people to play.

The landscape team developed a design for a greener district centre with the aims of creating meaningful community spaces, introducing nature, boosting health and wellbeing, and creating a more biodiverse and sustainable neighbourhood.

Client

Maindee Unlimited

Location

Newport



# Sandfields Public Realm

Urban design

Following on from our Aberavon Seafront Masterplan, we have been developing public realm enhancements as part of the councils Active Travel improvement scheme.

The proposals cover three pedestrian spaces, two of which are currently large, underutilised areas of tarmac along the seafront promenade and the third, an area close to the local primary school.

The spaces sit as part of the wider seafront masterplan developed by Roberts Limbrick in conjunction with the council, and will set the precedent for the new furniture, planting and materials palettes for future improvements.

The proposals introduce new areas of planting, seating and social spaces, informal play and biodiversity enhancements.

Client

Neath Port Talbot Council

Location

Aberavon



# Caldicot Masterplan

Urban design

Caldicot is a small town based around a central pedestrianised retail core. It was developed in the 1960s with a public realm makeover during the 80s.

Over the past 20 years, like many centres, Caldicot saw a downturn in trade and use, leading to the town looking tired and neglected. We prepared an overarching vision and development plan which set out long-term goals based around a series of projects and positive interventions. Through a range of long-term and short-term strategies, Caldicot is seeing regeneration and physical improvements that benefit the community.

The first short term project was the creation of an improved focal square at The Cross. This intervention reclaimed a tired and traffic-dominated space into a people-focused public square with plenty of greenery set at the historic core of the town.

Client

Monmouthshire County Council

Location

Caldicot, Monmouthshire



Design Guide

We delivered a shopfront design guide to support a grant-funded improvement scheme. The Cross project has stimulated confidence with several shop owners who are now submitting grant applications to deliver real physical improvements to their businesses.

Community Input

Following our own thorough place and context analysis, we asked the community to identify issues and opportunities which needed to be resolved or exploited. This approach enabled us to the prepare a strategy using our professional findings, while taking into account the needs of the community.

# Monnow Street Improvements

Urban design

We have been working with Monmouthshire County Council preparing options to enhance Monnow Street, within Monmouth town centre.



Client

Monmouthshire County Council

Location

Monmouth

Our designs look at ways to enhance pedestrian movements as well as add greenery to the street, incorporate rain gardens for sustainable urban drainage, and provide spill-out spaces with seating. This will animate the street and encourage people to spend more time there.

Image  
Forest of Dean College Campus



## Work with us

Our experience covers landscape design, planning and management. We work at all project stages, across all sectors and scales of schemes.

If you are interested in collaborating on your upcoming project, our team would be delighted to discuss ideas with you. Contact us at:

[mail@robertslimbrick.com](mailto:mail@robertslimbrick.com)  
03333 405 500



# Roberts Limbrick

## **Gloucester office:**

The Carriage Building  
Bruton Way  
Gloucester  
GL1 1DG

## **Newport office:**

1 Gold Tops  
Newport  
NP20 4PG

## **London office:**

4 Garrett Street  
London  
EC1Y 0TY

03333 405 500

[mail@robertslimbrick.com](mailto:mail@robertslimbrick.com)

