

# ESD-Safety shoes uni6 Low shoe black ESD



**Art. 31628**

**uni6**



- ▶ Size 35-48
- ▶ CE, EN ISO 20345:2011, S3, SRC
- ▶ Breathable textile, black
- ▶ Breathable lining with Silver ions
- ▶ Instep area with lacing
- ▶ Foamed PU midsole
- ▶ Slip resistance TPU outsole sole
- ▶ Steel toe cap
- ▶ Metalfree penetration resistance
- ▶ Replaceable Active Comfort Insole (art. 352520)
- ▶ Sanitized treated
- ▶ ESD dissipative according to DIN EN 61340
- ▶ Water-repellent

**CLIMATE CLASS 1**



## TECHNOLOGY

### OUTSOLE

- 1\_ ESD dissipative according to DIN EN 61340
- 2\_SRC slip resistance according to EN ISO 20345:2011
- 3\_Animal fats and oil resistant
- 4\_Fuel resistance

**352520**  
Size 35-48



steel toe-cap

**S3**  
METAL FREE  
PENETRATION RESISTANCE



Product qualification DIN EN 61340-5-1:	
test method	IEC 61340-5-1
limit values	$R \leq 10^8 \Omega$
average value	$R = 10^7 \Omega$

**Art. 31676**

**uni6**

- ▶ Size 35-48
- ▶ CE, EN ISO 20345:2011, S3, SRC
- ▶ Knitted textile , black
- ▶ Breathable lining with Silver ions
- ▶ Instep area with lacing
- ▶ Foamed PU midsole
- ▶ Slip resistance TPU outsole sole
- ▶ Steel toe cap
- ▶ Metalfree penetration resistance
- ▶ Replaceable Active Comfort Insole (art. 352510)
- ▶ ESD dissipative according to DIN EN 61340
- ▶ Protection against splash water
- ▶ Weight Size 42: 1100g



**TECHNOLOGY**

**OUTSOLE**

- 1\_Antistatic
- 2\_SRC slip resistance according to EN ISO 20347:2012
- 3\_Animal fats and oil resistant
- 4\_Fuel resistance

**352510**  
Size 35-48



	Product qualification DIN EN 61340-5-1:
test method	IEC 61340-5-1
limit values	$R \leq 10^8 \Omega$
average value	$R = 10^7 \Omega$

# ESD-Safety shoes uni6 Low shoe black ESD



**Art. 31721**

**uni6**



- ▶ Size 35-48
- ▶ CE, EN ISO 20345:2012, S1, SRC
- ▶ Velours with breathable textile inlays, black
- ▶ Breathable lining with Silver ions
- ▶ Instep area with lacing
- ▶ Foamed PU midsole
- ▶ Slip resistance TPU outsole sole
- ▶ Steel toe cap
- ▶ Replaceable Active Comfort Insole (art. 352520)
- ▶ Sanitized treated
- ▶ ESD dissipative according to DIN EN 61340
- ▶ Reflective material

**CLIMATE CLASS 1**



## TECHNOLOGY

### OUTSOLE

- 1\_ ESD dissipative according to DIN EN 61340
- 2\_SRC slip resistance according to EN ISO 20345:2011
- 3\_Animal fats and oil resistant
- 4\_Fuel resistance

**352520**  
Size 35-48



Product qualification DIN EN 61340-5-1:	
test method	IEC 61340-5-1
limit values	$R \leq 10^8 \Omega$
average value	$R = 10^7 \Omega$

# ESD-Safety shoes uni6 Low shoe black ESD



**Art. 31761**

**uni6**



- ▶ Size 35-48
- ▶ CE, EN ISO 20345:2012, S2, SRC
- ▶ Functional leather with honeycomb pattern, black
- ▶ Breathable lining with Silver ions
- ▶ Instep area with lacing
- ▶ Foamed PU midsole
- ▶ Slip resistance TPU outsole sole
- ▶ Steel toe cap
- ▶ Replaceable Active Comfort Insole (art. 352520)
- ▶ Sanitized treated
- ▶ ESD dissipative according to DIN EN 61340
- ▶ Water-repellent
- ▶ Scratch-proof

**CLIMATE CLASS 1**



## TECHNOLOGY

### OUTSOLE

- 1\_ ESD dissipative according to DIN EN 61340
- 2\_SRC slip resistance according to EN ISO 20345:2011
- 3\_Animal fats and oil resistant
- 4\_Fuel resistance

**352520**  
Size 35-48



Product qualification DIN EN 61340-5-1:	
test method	IEC 61340-5-1
limit values	$R \leq 10^8 \Omega$
average value	$R = 10^7 \Omega$

# ESD-Safety shoes uni6 Low shoe black ESD



**Art. 31765**

**uni6**



- ▶ Size 35-48
- ▶ CE, EN ISO 20345:2012, S3, SRC
- ▶ Functional leather with honeycomb pattern, black
- ▶ Breathable lining with Silver ions
- ▶ Instep area with lacing
- ▶ Foamed PU midsole
- ▶ Slip resistance TPU outsole sole
- ▶ Steel toe cap
- ▶ Metalfree penetration resistance
- ▶ Replaceable Active Comfort Insole (art. 352520)
- ▶ Sanitized treated
- ▶ ESD dissipative according to DIN EN 61340
- ▶ Water-repellent
- ▶ Scratch-proof

**CLIMATE CLASS 1**



## TECHNOLOGY

### OUTSOLE

- 1\_ ESD dissipative according to DIN EN 61340
- 2\_SRC slip resistance according to EN ISO 20345:2011
- 3\_Animal fats and oil resistant
- 4\_Fuel resistance

**352520**  
Size 35-48



steel toe-cap

**S3**  
METAL FREE  
PENETRATION RESISTANCE



Product qualification DIN EN 61340-5-1:	
test method	IEC 61340-5-1
limit values	$R \leq 10^8 \Omega$
average value	$R = 10^7 \Omega$

# ESD-Safety shoes uni6 Low shoe white ESD



**Art. 31772**

**uni6**



- ▶ Size 35-48
- ▶ CE, EN ISO 20345:2012, S2, SRC
- ▶ Knitted textile , white
- ▶ Breathable lining with Silver Point
- ▶ Instep area with lacing
- ▶ Foamed PU midsole
- ▶ Slip resistance TPU outsole sole
- ▶ Steel toe cap
- ▶ Replaceable Active Comfort Insole (art. 352520)
- ▶ Sanitized treated
- ▶ ESD dissipative according to DIN EN 61340
- ▶ Protection against splash water

**CLIMATE CLASS 1**



## TECHNOLOGY

- 1 ESD dissipative according to DIN EN 61340
- 2 SRC slip resistance according to EN ISO 20345:2011
- 3 Animal fats and oil resistant
- 4 Fuel resistance

**352520**  
Size 35-48



Product qualification DIN EN 61340-5-1:	
test method	IEC 61340-5-1
limit values	$R \leq 10^8 \Omega$
average value	$R = 10^7 \Omega$

# ESD-Safety shoes uni6 Low shoe blue ESD



**Art. 31773**

**uni6**

- ▶ Size 35-48
- ▶ CE, EN ISO 20345:2012, S2, SRC
- ▶ Knitted textile , blue
- ▶ Breathable lining with Silver Point
- ▶ Instep area with lacing
- ▶ Foamed PU midsole
- ▶ Slip resistance TPU outsole sole
- ▶ Steel toe cap
- ▶ Replaceable Active Comfort Insole (art. 352520)
- ▶ Sanitized treated
- ▶ ESD dissipative according to DIN EN 61340
- ▶ Protection against splash water



**CLIMATE CLASS 1**

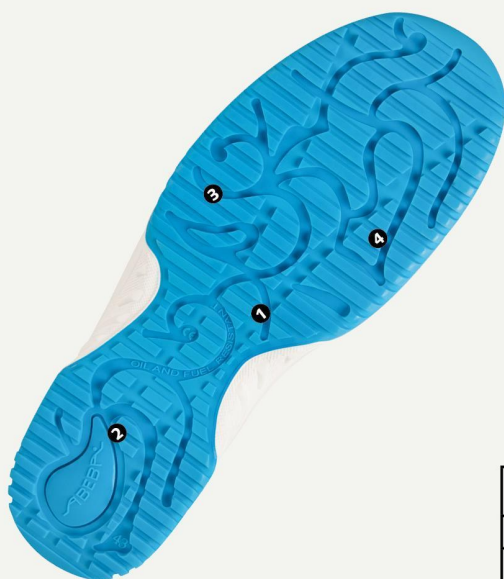


## TECHNOLOGY

### OUTSOLE

- 1\_ ESD dissipative according to DIN EN 61340
- 2\_SRC slip resistance according to EN ISO 20345:2011
- 3\_Animal fats and oil resistant
- 4\_Fuel resistance

**352520**  
Size 35-48



Product qualification DIN EN 61340-5-1:	
test method	IEC 61340-5-1
limit values	$R \leq 10^8 \Omega$
average value	$R = 10^7 \Omega$

# ESD-Safety shoes uni6 Low shoe anthracite ESD



**Art. 31775**

**uni6**



**CLIMATE CLASS 1**

- ▶ Size 35-48
- ▶ CE, EN ISO 20345:2012, S2, SRC
- ▶ Knitted textile , anthracite
- ▶ Breathable lining with Silver ions
- ▶ Instep area with lacing
- ▶ Foamed PU midsole
- ▶ Slip resistance TPU outsole sole
- ▶ Steel toe cap
- ▶ Replaceable Active Comfort Insole (art. 352520)
- ▶ Sanitized treated
- ▶ ESD dissipative according to DIN EN 61340
- ▶ Protection against splash water



## TECHNOLOGY

### OUTSOLE

- 1\_ ESD dissipative according to DIN EN 61340
- 2\_SRC slip resistance according to EN ISO 20347:2012
- 3\_Animal fats and oil resistant
- 4\_Fuel resistance

**352520**  
Size 35-48



Product qualification DIN EN 61340-5-1:	
test method	IEC 61340-5-1
limit values	$R \leq 10^8 \Omega$
average value	$R = 10^7 \Omega$

# Safety shoes anatom Low shoe dark blue ESD



**Art. 32147**

anatom

- ▶ Size 36-50
- ▶ CE, EN ISO 20345:2011, S1, SRC
- ▶ Velours with breathable textile inlays, dark blue
- ▶ Breathable lining with Silver ions
- ▶ Instep area with lacing
- ▶ Shock absorbant PU midsole
- ▶ Slip resistance PU outsole sole
- ▶ Steel toe cap
- ▶ Replaceable Active Comfort Insole (art. 352320)
- ▶ ESD dissipative according to DIN EN 61340
- ▶ Reflective material
- ▶ Scratch-resistant coating in heel area



**CLIMATE CLASS 1**



## TECHNIK

### LAUFSOHL

- 1\_ESD-gerecht nach DIN EN 61340
- 2\_SRC-Rutschhemmung nach EN ISO 20345:2011
- 3\_Selbstreinigendes Profil
- 4\_Asymmetrische Ferse (natürliche Lagerung des Fußes)
- 5\_Torsionsgelenk aus TPU
- 6\_Umknickschutz (hohe Seitenstabilität)
- 7\_Kraftstoffbeständigkeit



**ASYMMETRICAL HEEL**



Product qualification DIN EN 61340-5-1:	
test method	IEC 61340-5-1
limit values	$R \leq 10^9 \Omega$
average value	$R = 10^7 \Omega$

# ESD-Safety shoes anatom Low shoe black ESD



**Art. 32256**

anatom

- ▶ Size 36-52
- ▶ CE, EN ISO 20345:2011, S3, SRC
- ▶ Smooth leather, black
- ▶ Breathable lining with Silver ions
- ▶ Instep area with lacing
- ▶ Shock absorbant PU midsole
- ▶ Slip resistance PU outsole sole
- ▶ Steel toe cap
- ▶ Metalfree penetration resistance
- ▶ Replaceable Active Comfort Insole (art. 352320)
- ▶ ESD dissipative according to DIN EN 61340
- ▶ Reflective material
- ▶ Scratch-resistant coating in toe and heel area



**CLIMATE CLASS 1**



## TECHNIK

### LAUFSOHL

- 1\_ESD-gerecht nach DIN EN 61340
- 2\_SRC-Rutschhemmung nach EN ISO 20345:2011
- 3\_Selbstreinigendes Profil
- 4\_Asymmetrische Ferse (natürliche Lagerung des Fußes)
- 5\_Torsionsgelenk aus TPU
- 6\_Umknickschutz (hohe Seitenstabilität)
- 7\_Kraftstoffbeständigkeit



**S3**  
METAL FREE  
PENETRATION RESISTANCE



Product qualification DIN EN 61340-5-1:	
test method	IEC 61340-5-1
limit values	$R \leq 10^8 \Omega$
average value	$R = 10^7 \Omega$