

**Presentation will start at 6:05**

**Questions and Answer Session after the Presentation**



# Greater Mill Valley Fuel Break Project

Public Information Meeting  
June 24, 2025



# Welcome and Introductions



## Agenda and Purpose of Meeting

- Brief Summary of the Marin Wildfire Prevention Authority
- Introduce the Greater Mill Valley Fuel Break Project and purpose
- Summary of sensitive resources and the environmental process
- Questions?



- **Marin Wildfire Prevention Authority (Marin Wildfire)**
  - Mark Brown, Executive Officer
  - Anne Crealock, Planning and Program Manager
- **Southern Marin Fire District**
  - Marshall Nau, Deputy Fire Marshal
  - Madison Mead, Vegetation Management Specialist
- **Marin County Fire Department**
  - Jordan Reeser, Battalion Chief
  - Gavin Albertoli, Vegetation and Fuels Management Program Manager

## Additional Key Partners and Land Managers

- Marin County Open Space District / Marin County Parks
- Marin Municipal Water District
- City of Mill Valley

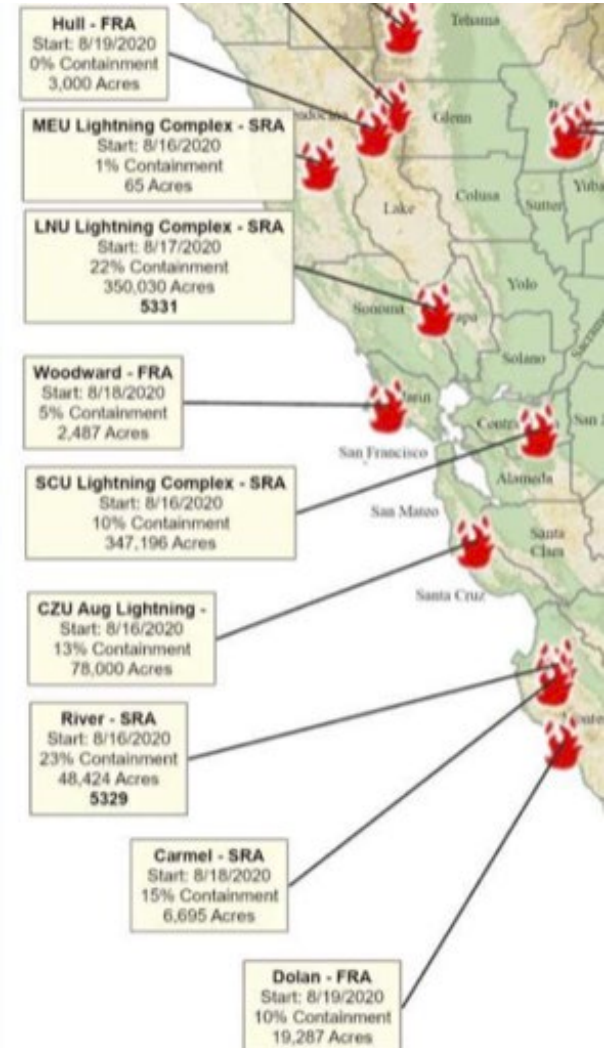
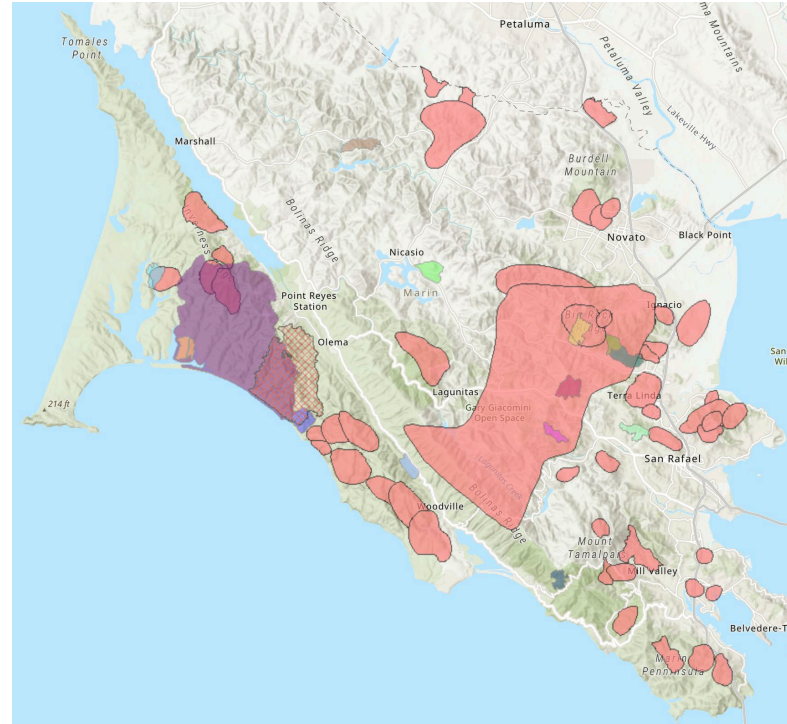
## Environmental Consultant, Panorama Environmental

- Caitlin Gilleran, Project Manager

# Fire History of Marin County



- Significant history of wildfires
- Neighboring communities and counties severely damaged by catastrophic fires over last decade
- Any of our communities could be next - we are all vulnerable





# Marin Wildfire Boundaries

- Marin Wildfire is a Joint Powers Authority (JPA)
- Funded through a parcel tax (Measure C, 2020)
- Five geographic zones
- The JPA includes 17 Member Agencies
- Member Agencies in the Southern Marin Zone include Southern Marin Fire District, County Fire, Muir Beach CSD, and Mill Valley
- Additional partners include land management agencies, such as Marin County Parks and Marin Water







# Marin Wildfire's Role in Project Planning & Implementation

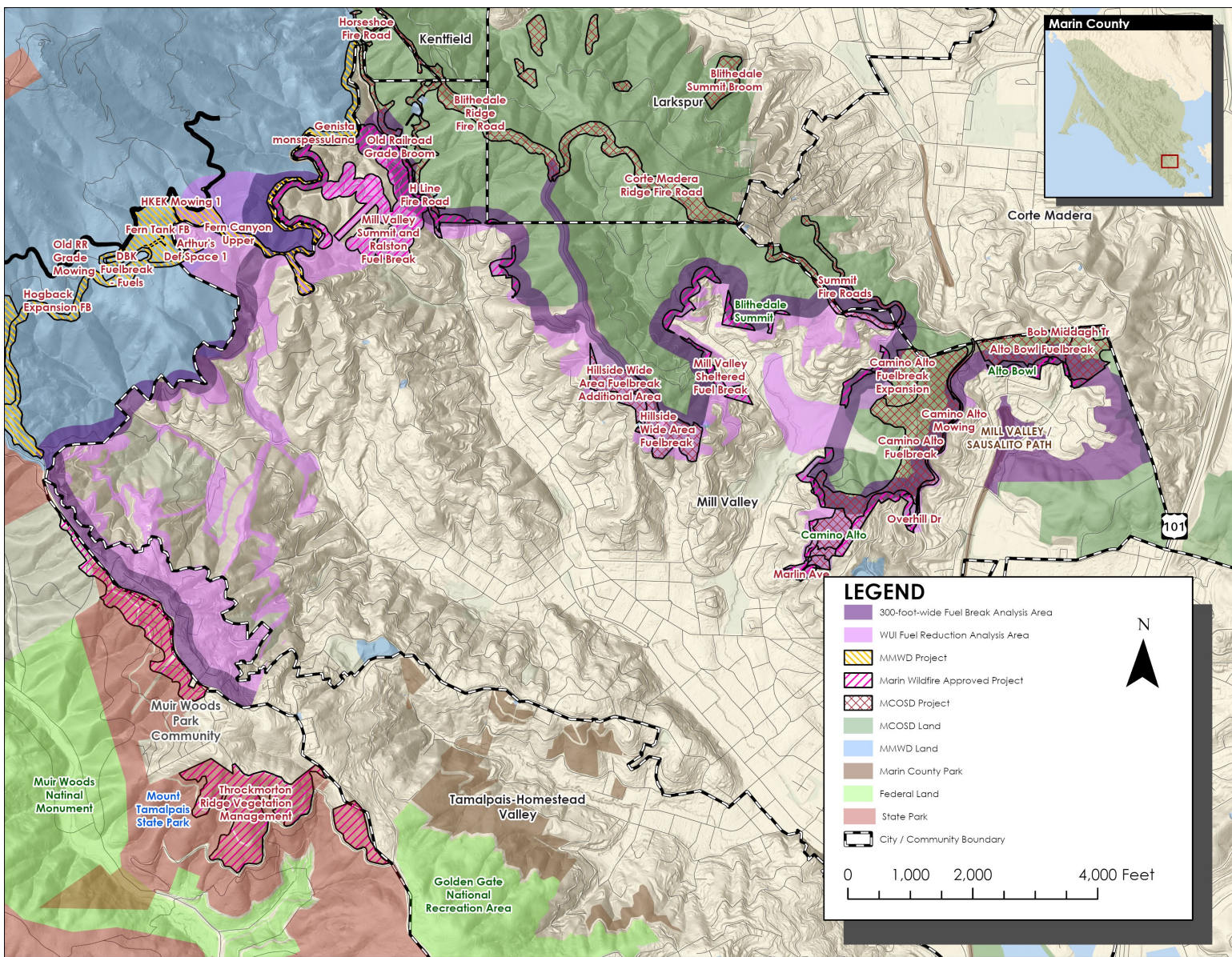


- Marin Wildfire:
  - Collects and distributes Measure C funds to Member Agencies for local and defensible space projects/programs
  - Annual Work Plan development
  - Coordinates most JPA-wide projects/programs
  - Coordinates planning of "core" vegetation management projects, such as shaded fuel breaks, including environmental compliance
  - Assists in project implementation of most "core" projects, sometimes including contracting, crew management, biological or other surveys, access agreements, etc.
  - Role may vary depending on Member Agency capacity





# Project Purpose



Create and maintain a continuous fuel reduction and wildfire resilience zone that interconnects existing or planned fuel management areas to reduce wildfire risk, including wildfire intensity and rate of spread, and to provide strategic locations for firefighters and emergency personnel to fight a wildfire in the event of ignition.

Intention is for post-treatment outcome to resemble pre-fire suppression conditions by enhancing native, fire-resilient plant communities.



# Project Location and Design

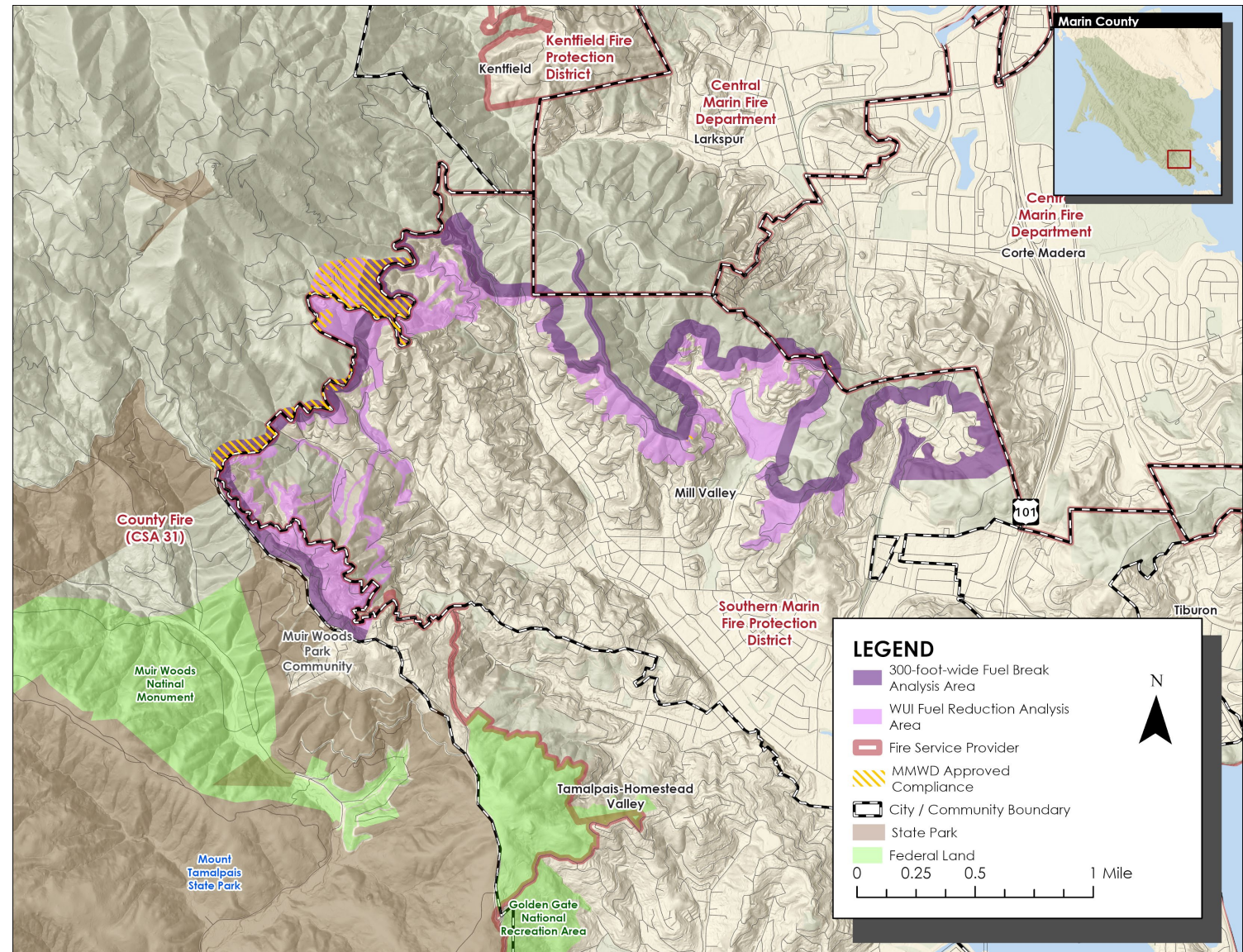


## Location

- Approximately 23 miles long
- 673 acres of private and public lands in the City of Mill Valley and unincorporated Marin County

## Fuel Break Design

- Interconnects existing and approved fuel management areas into a single contiguous fuel reduction area
- SMFD and County Fire worked with Panorama and Willow Labs to enhance the potential fuel break and wildland urban interface (WUI) areas based on locations of homes at the WUI, fire modeling, and expert local knowledge
- Refined based on coordination with Marin County Open Space District and Marin Municipal Water District staff





# Project Landowners and Jurisdictions

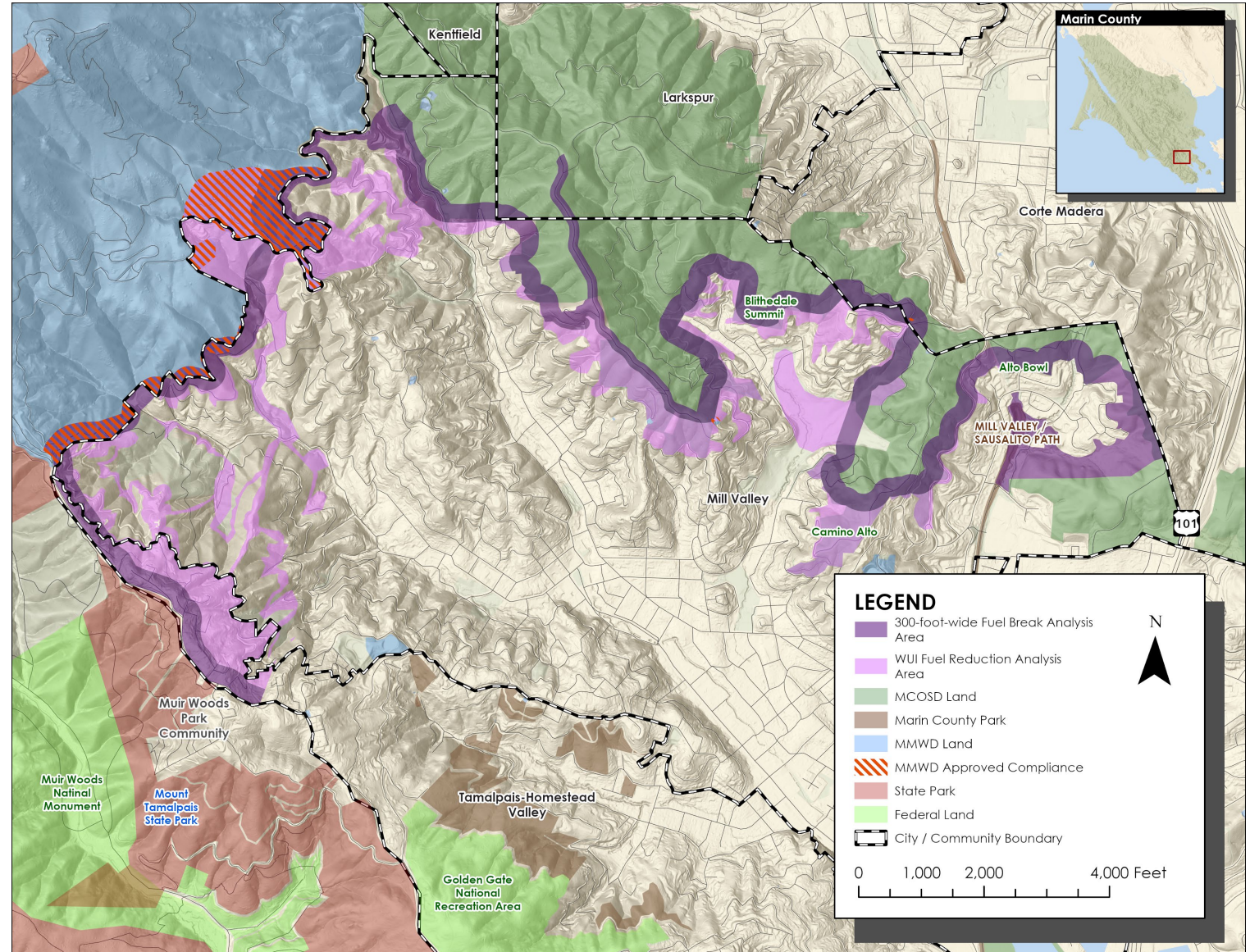


## Jurisdictions

- City of Mill Valley
- Unincorporated Marin County (Muir Woods area)

## Main Landowners

- Marin County Open Space District and Marin County Parks
- Marin Municipal Water District
- City of Mill Valley
- Large residential parcels
- Large private open space





# Project Description



## Features

- Includes a continuous, generally 200-foot-wide shaded fuel break around the Mill Valley community at the wildland urban interface (WUI), but evaluates an up to 300-foot-wide analysis area in the environmental document
- Approximately 345 acres of designated fuel break
- Approximately 328 acres of WUI fuel reduction area

## Anticipated Treatments

- Primarily manual treatments
- Ground-based mechanical treatment potential
- Discrete areas of:
  - Prescribed herbivory
  - Targeted herbicide application
- Biomass disposal:
  - Pile (prescribed) burning
  - Chipping
- Some areas may not be treatable due to slopes/access
- Some areas may not need treatment (serpentine, golf courses, rocky areas, or already treated areas)

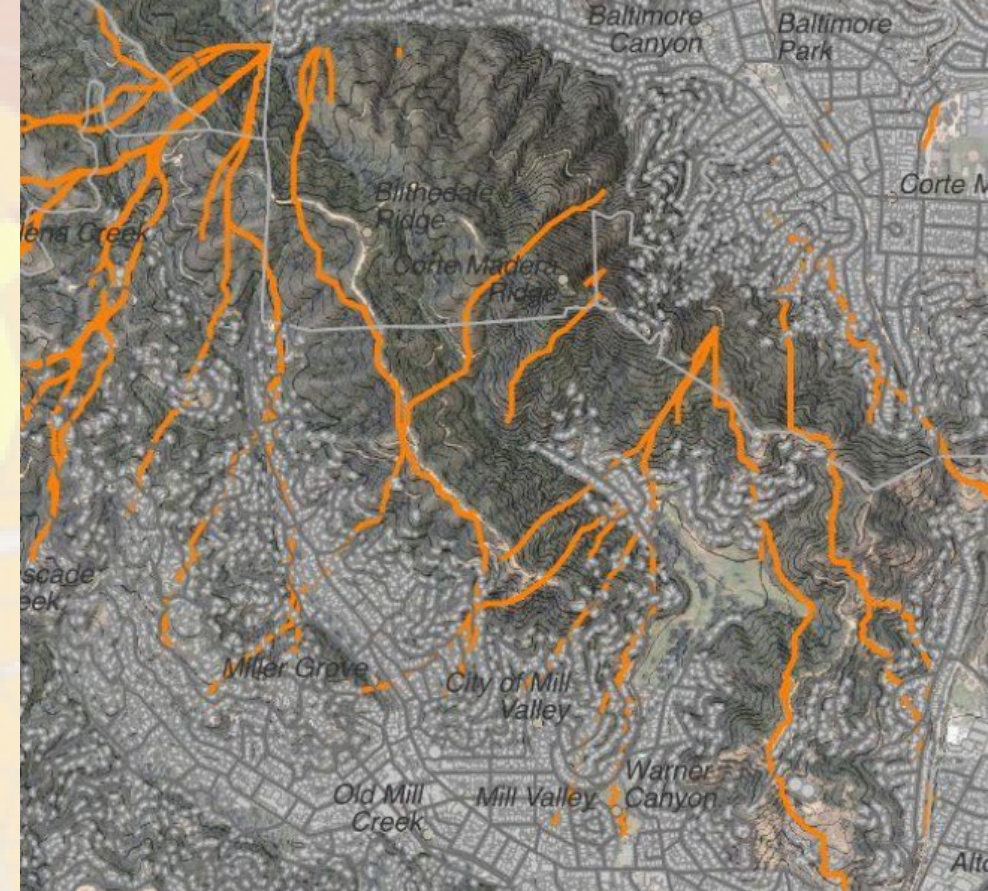




# Wildfire Modeling and Project Design



- Fire pathways indicate the portions of the landscape where fire spread is likely to align with topography, fuels, and fire weather winds to produce runs toward communities.
- Industry-standard fire behavior analysis techniques were used to calculate the rate of spread and flame length potential for the untreated landscape.
- Helped inform refinements to where to expand the potential project treatment areas to interrupt key pathways and reduce rate of spread and flame lengths.



Two key scenarios were modeled: Diablo Wind (depicted) and West Wind



# Examples of Similar Fuel Reduction Work





# Examples of Similar Fuel Reduction Work



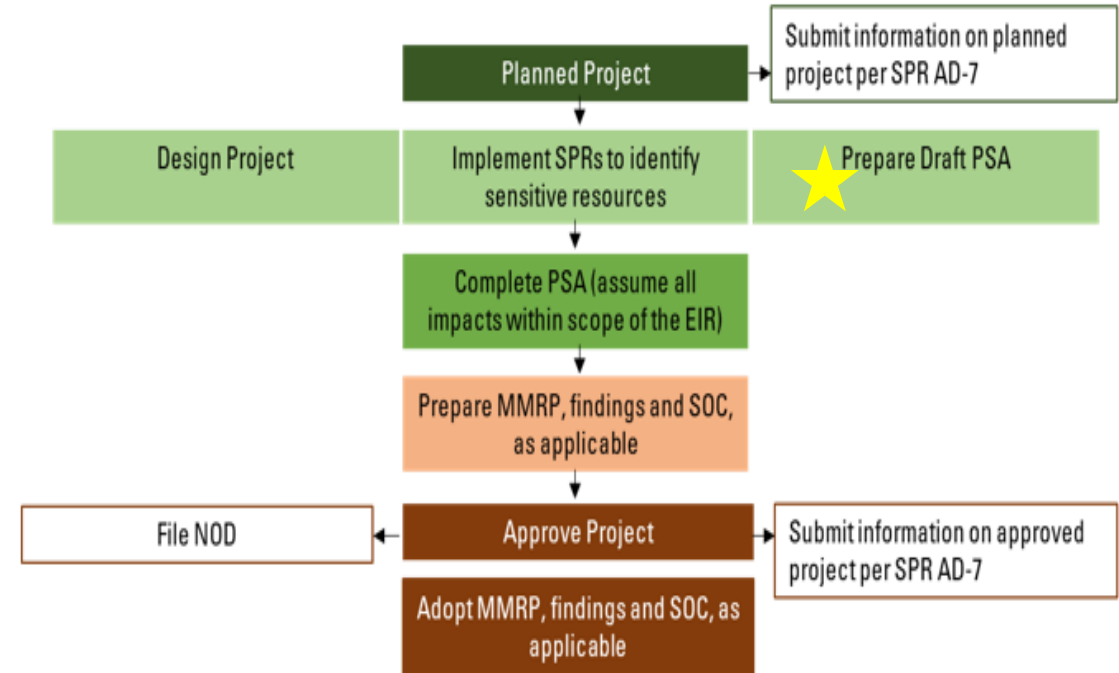


# Environmental Review Process



## California Vegetation Treatment Program (CalVTP) and Project-Specific Analysis (PSA)

- Preparing a PSA under the CalVTP Program Environmental Impact Report (EIR) including an Addendum for areas outside of the treatable landscape
- Certified EIR – identify that this project is “within scope”
- Mitigation Measures and Standard Project Requirements (SPRs) defined in the CalVTP EIR are selected as applicable
- No formal public review period is required





## Biological Resources

- Known sensitivities:
  - Northern spotted owl
  - Rare manzanitas
- Biological resources desktop review and reconnaissance surveys (in progress)
- Botanical surveys in priority treatment areas planned for treatment this coming field season (in progress)



Northern spotted owl

## Cultural Resources

- Known sensitivities:
  - Precontact and historic resources are documented in the analysis area
- Cultural resources records search and buried resource sensitivity analysis (in progress)
- Native American outreach and coordination (in progress)
- Surveys and/or monitoring is anticipated



Glass bottle with embossed lettering



20th Century cosmetic bottle



# Schedule



	Start	Finish
Project Definition	Fall 2024	Spring 2024
Community and Agency Outreach	June 2025	Late Summer/Fall 2025
Environmental Review and PSA Drafting	May 2025	July 2025
Biological Surveys and Report	May 2025	Late June 2025
Cultural Resources Records Search and Report	May 2025	July 2025
Final PSA Checklist and MMRP and Findings	Late Summer/Fall 2025	Late Summer/Fall 2025
Marin Wildfire Approval of Project and Adoption of MMRP and Findings	--	Late Summer/Fall 2025
Initial Implementation	Fall 2025	Through next 5 years with maintenance – 10 years for PSA

**Public Field Visit: Late Summer/Fall 2025**

# Public Participation



- Complete and maintain the defensible space around your structures (0-100 feet)
- Opportunities to work with MWPA and your local fire agency for additional fuel reduction work on private land
- Provide access to areas where work would be occurring
  - Fire agencies will coordinate with you to acquire right-to-enter
- Continue to stay informed about this project and other vegetation treatment projects by attending public meetings and following the website for updates





# Questions?



**You can also email questions to: [prevention@smfd.org](mailto:prevention@smfd.org)**

**Project website: <https://www.marinwildfire.org/project/greater-mill-valley-fuel-break-project>**