

2026 Marin County Community Wildfire Protection Plan – DRAFT West Marin Summary

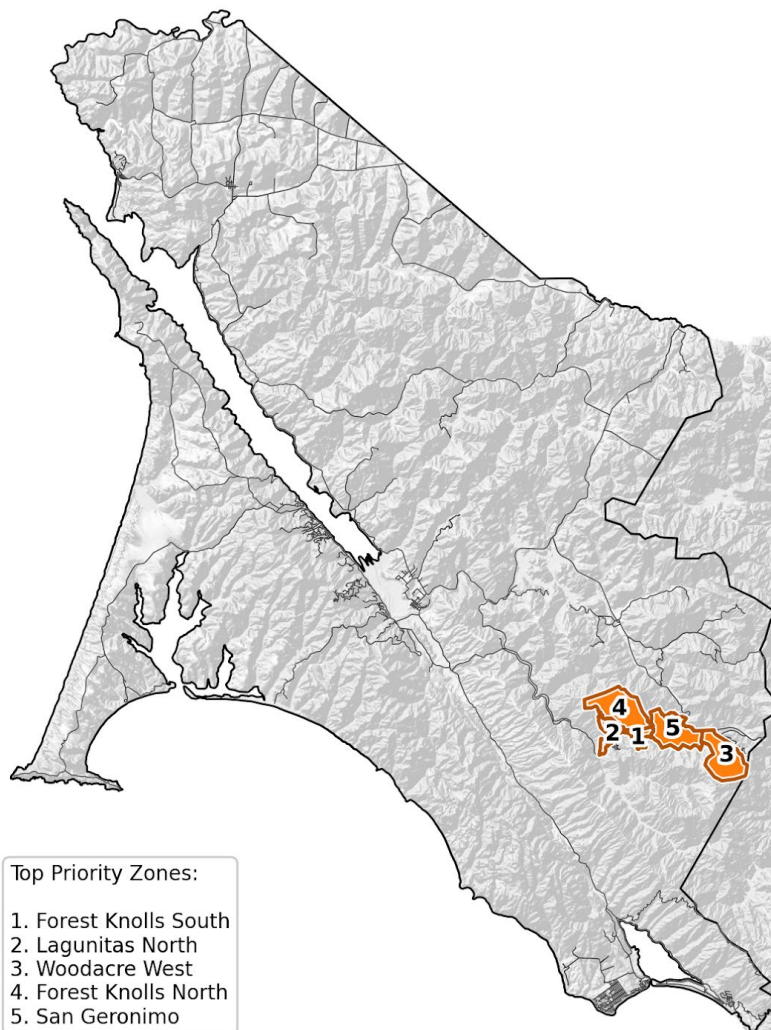
West Marin’s diverse landscapes are anticipated to support frequent fires and active fire behavior. Combined with rural communities and constrained infrastructure that limits access for fire responders, elevated wildfire risk conditions are expected. Fuel-reduction projects and structure hardening within and adjacent to high-risk communities would reduce community exposure. Because anticipated fire behavior is anticipated to outpace fire response under high-severity conditions, communities should leverage pre-fire mitigations and playbooks to limit consequences. Household characteristics in some communities may complicate evacuation, and roadway networks are often narrow and difficult to travel, particularly during a large-scale evacuation. Improvements to alerting procedures and the development of detailed, locally tailored evacuation playbooks would reduce the likelihood of evacuation failure during a fast-moving incident. Enhanced detection capabilities are recommended in some areas of the zone to complement the existing camera network.

This zone-specific summary provides a brief description of the highest-priority zones within the West Marin JPA zone. These recommendations are intended to be interpreted in conjunction with local knowledge and expertise to develop effective risk-reduction strategies in West Marin.

Near-Community Vegetation Management

The highest-priority areas for Near-Community Vegetation Management in West Marin are within the San Geronimo Valley, including Lagunitas, Forest Knolls, and Woodacre. In the San Geronimo Valley, fire pathways under both northeast and west wind events align to create elevated risk of fire exposure to communities. Flame lengths are projected to exceed 8 feet in some developed areas. Strategically located shaded fuel breaks would reduce moderate fire behavior at the community edge and provide improved operating areas for suppression resources. Similar treatments are recommended in the zones in and around Point Reyes Station.

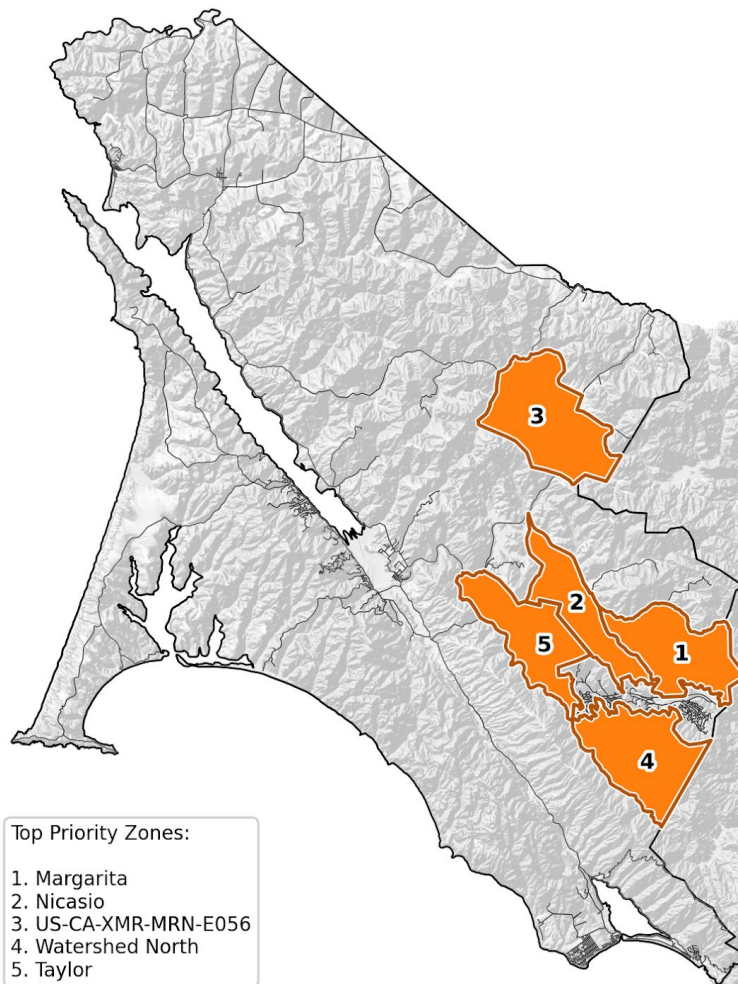
West Marin Vegetation Management Near Community



Open-Space Vegetation Management

Open-Space Vegetation Management is most strongly recommended where a fire is likely to pass through and continue into adjacent communities along the Highway 101 corridor or within the San Geronimo Valley. These zones include Margarita, Nicasio, MRN-E056, Watershed North, and Taylor. Strategically located SPLATs within these corridors could moderate fire growth and reduce downstream exposure in adjacent communities. In addition to transmission lines, water and communications infrastructure are located throughout these zones. Targeted vegetation management around these assets would improve continuity of water and communication services during a wildfire incident. These high-priority areas also lie within drinking water watersheds. A high-severity fire in these landscapes could adversely affect water quality and supply reliability, making proactive vegetation management an important initiative.

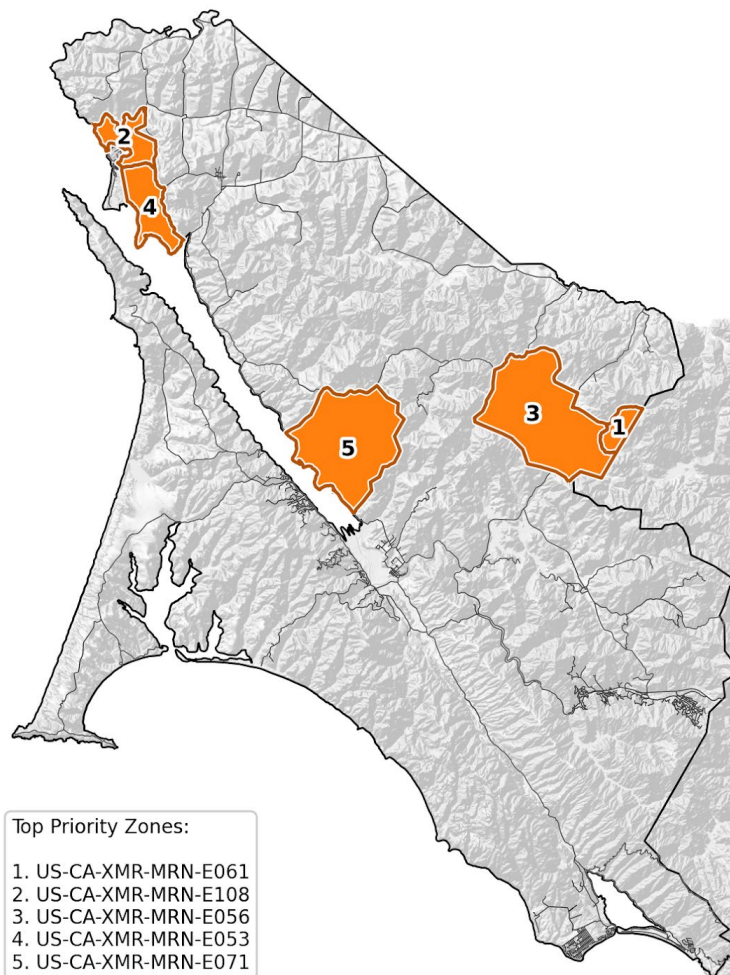
West Marin Vegetation Management Open Space



Detection

Compared with other parts of Marin County, West Marin contains the largest concentration of areas where enhanced Detection is recommended. Although the overall camera coverage is strong throughout West Marin, coverage gaps remain in some small areas. In addition, many areas are remote and located far from primary roadways, reducing the likelihood of rapid resident reporting through 911. The highest-priority areas for enhanced detection initiatives include zones west of Novato, northwest of Point Reyes Station, and near Dillon Beach. Ignitions within existing camera blind spots could spread rapidly, with modeled rates of spread exceeding 50 meters per minute under severe conditions. Detection enhancements in these areas would reduce the probability that fast-moving fires become established before identification and increase the likelihood of successful initial attack.

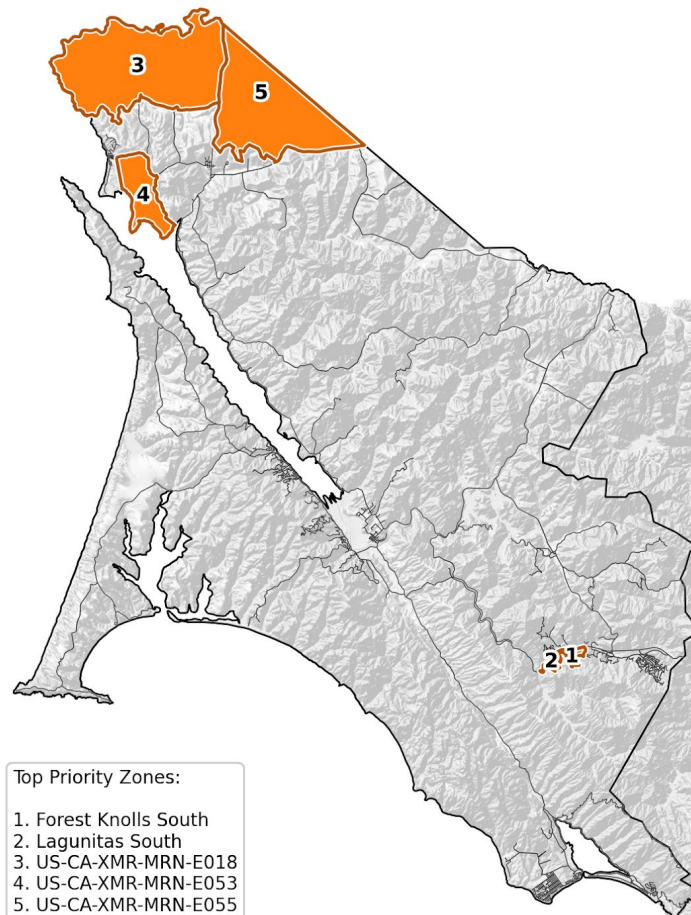
West Marin Detection



Alerting

Investments in enhanced Alerting systems are most strongly recommended in the Lagunitas South and Forest Knolls South zones and in the far-northern portions of the county along the Sonoma County line. Although these areas are relatively sparsely populated, AlertMarin enrollment is extremely low, with subscription rates as low as 7% in some areas. Modeled burn probability and rates of spread are high, and fires may advance at more than 50 meters per minute under severe fire weather. These zones also exhibit elevated concentrations of residents whose household characteristics may complicate rapid evacuation. Taken together, low AlertMarin enrollment, high fire growth potential, and demographic factors indicate increased potential for enhanced warning initiatives to improve evacuation outcomes. Targeted outreach and supplemental notification strategies would improve the likelihood that residents receive and act on emergency alerts in a timely manner.

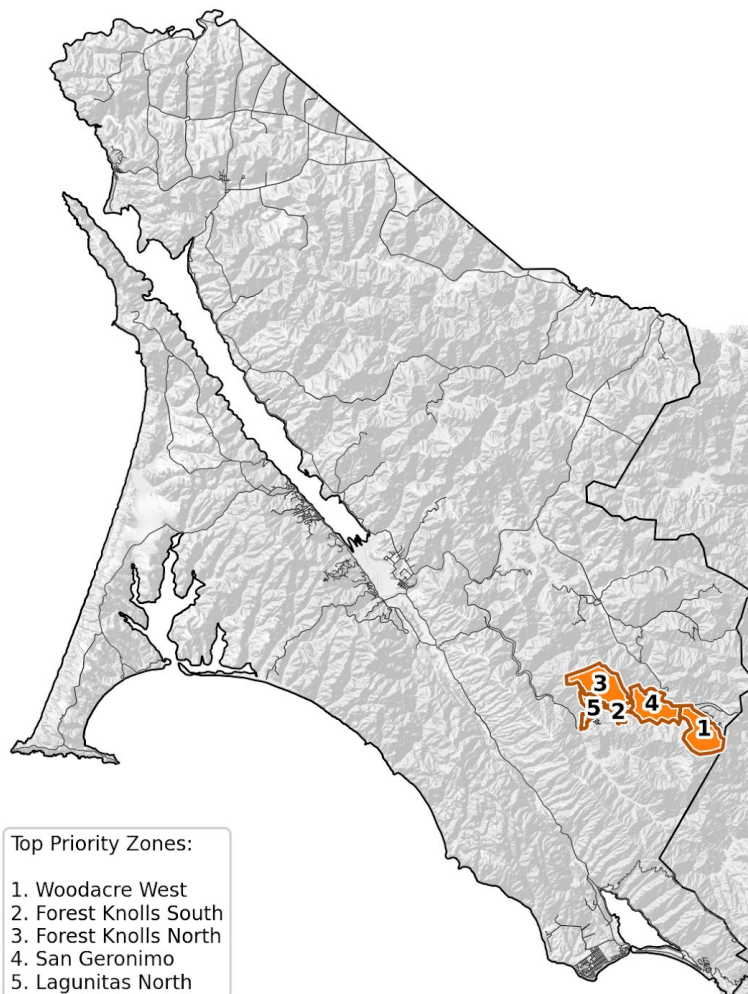
West Marin Alerting



Evacuation Planning

Initiatives to enhance Evacuation Planning are most strongly recommended in the San Geronimo Valley, including Woodacre, Forest Knolls, and Lagunitas. These zones are modeled to have very high fire occurrence and a high likelihood of fire pathways impacting both structures and roadway networks. Road configuration presents additional constraints: many roads are narrow and winding and are likely to be difficult to travel during emergency conditions, particularly when driver behavior becomes unpredictable and visibility is reduced by smoke. These communities are also comparatively difficult for suppression resources to access. The combination of elevated exposure, constrained egress, and limited responder access increases evacuation complexity and underscores the importance of detailed, zone-specific evacuation planning.

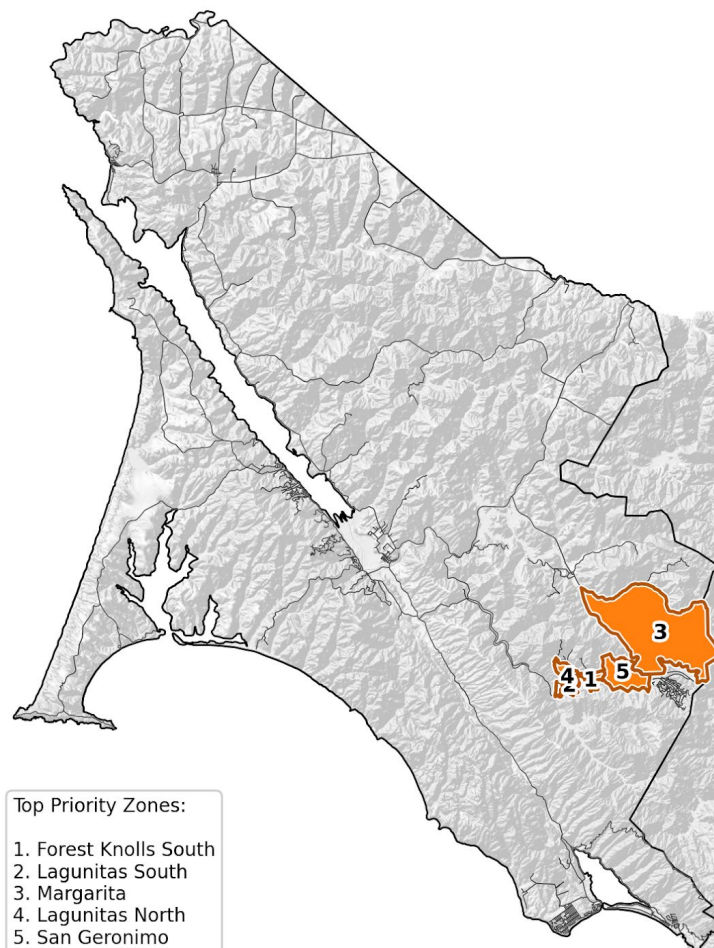
West Marin Evacuation Planning



Roadside Clearance

The highest-priority areas for Roadside Clearance are within the San Geronimo Valley, where high fire probability, elevated flame lengths, and increased likelihood of canopy fire coincide, raising the risk to evacuating vehicles. The highest-priority zones include Forest Knolls, Lagunitas, San Geronimo, and Margarita. These areas rank above the 90th percentile for burn probability and are projected to support flame lengths along roads exceeding 10 feet during severe fire weather events. In some zones, more than 15% of roadway segments are not fire resilient, indicating limited capacity for safe travel during peak fire conditions. Targeted roadside vegetation management would improve evacuation safety and support firefighter ingress. Moreover, these initiatives can reduce the probability of roadside ignitions in these high-exposure corridors by limiting vegetation along the roadway.

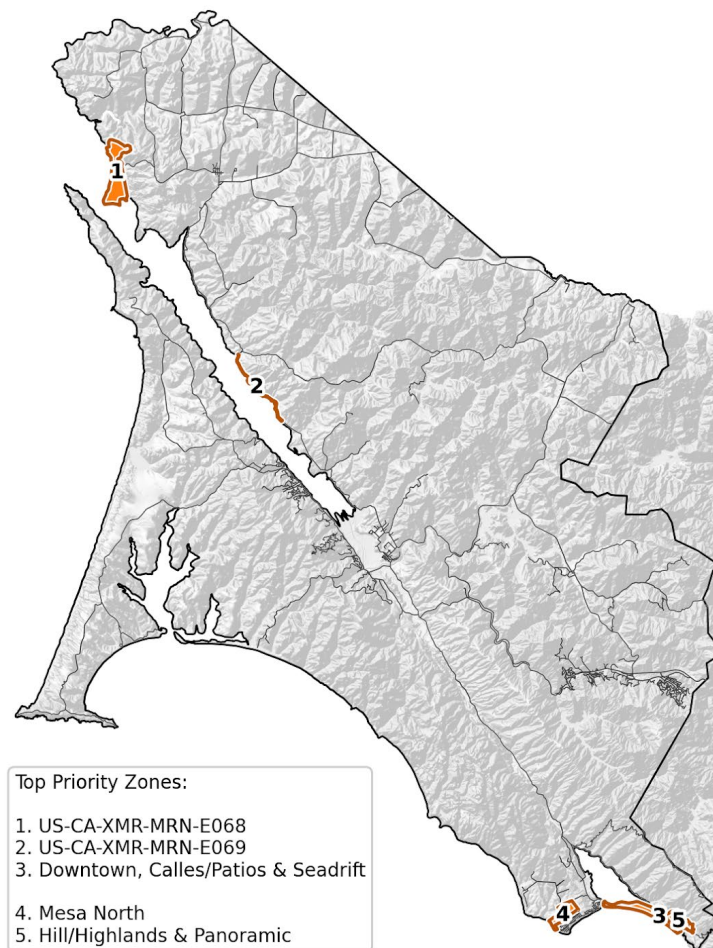
West Marin Roadside Clearance



Residential Risk Reduction

Residential risk reduction West Marin is most strongly recommended in Dillon Beach, Marshall, Bolinas, and Stinson Beach. While enhanced defensible space and home hardening would benefit all West Marin communities, these highest-priority communities are characterized by tightly spaced structures and constrained suppression access due to their remote locations. Many parcels contain multiple unresolved defensible-space and home-hardening vulnerabilities that increase the likelihood of structure ignition during a wildfire. Fire-behavior modeling shows that these zones are likely to exhibit high-severity fire characteristics, including high flame lengths, rapid rates of spread, and substantial ember showers. Strengthening defensible space compliance and implementing robust home-hardening measures would reduce loss potential in these difficult-to-access communities, where initial response capacity may be limited.

West Marin On Parcel Risk Reduction



Countywide Comparison

The table below compares priorities in the West Marin JPA zone relative to the rest of the county. Unlike the summaries above, which identify the top five zones for each theme, the data in this table indicate how often high-priority zones occur within each theme.

Theme	Number of Zones at or Above 75th Percentile Countywide
Near-Community Vegetation Management	8
Vegetation Management Distant	34
Detection	10
Alerting	4
Roadside Clearance	17
Evacuation Planning	8
Residential Risk Reduction	18