

# POLARIS HEART

SIZING GUIDE

26'



All of  
ARCHITECTURE



HEARTLAND

# GUIDELINE BOOKLET

This booklet is a guide to help you choose furniture that optimizes your unit's space. Always check your unit for recommended furniture placement, type & size. All images are conceptual interpretations of what the intended interior would represent.

# TYPE A

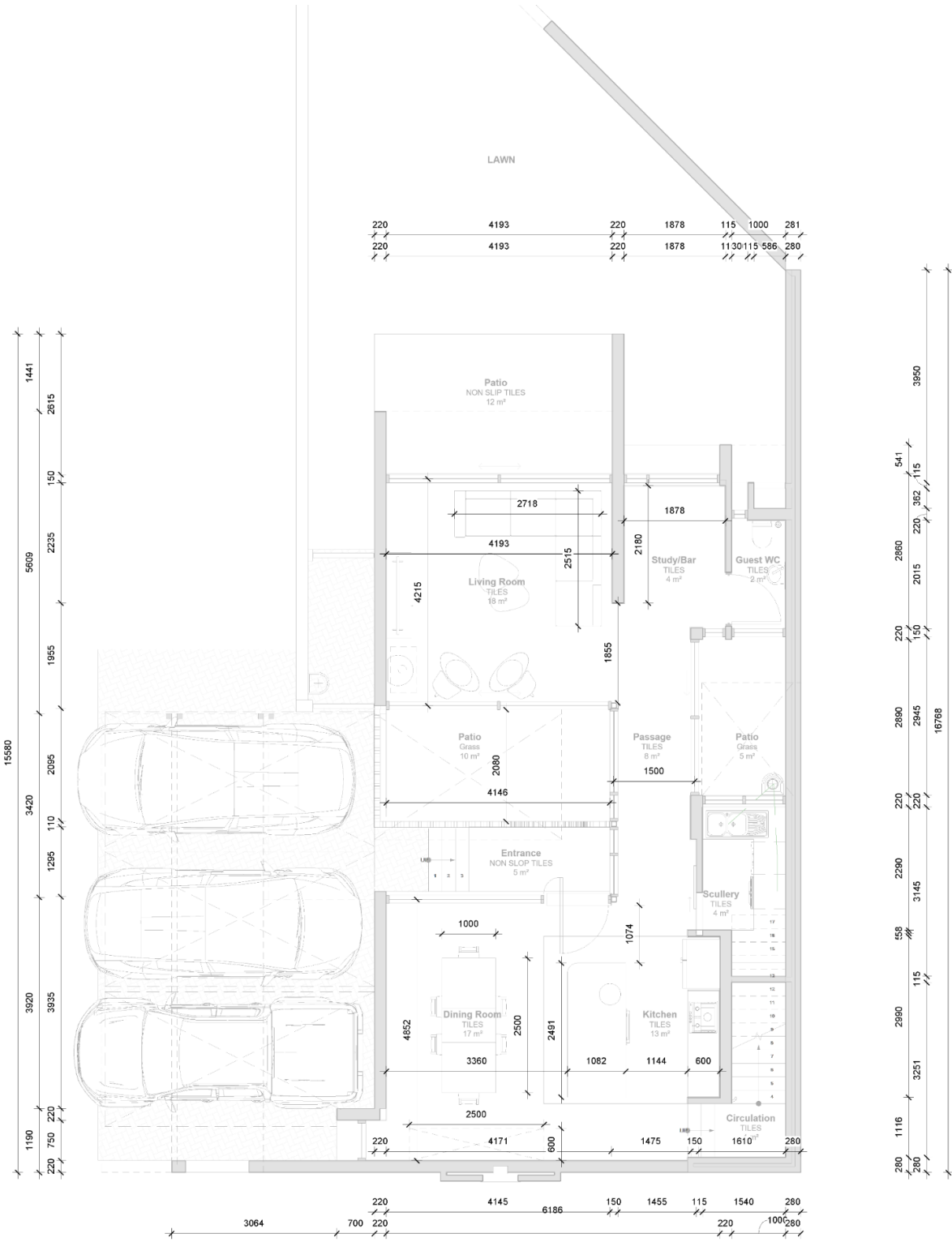


GROUND FLOOR

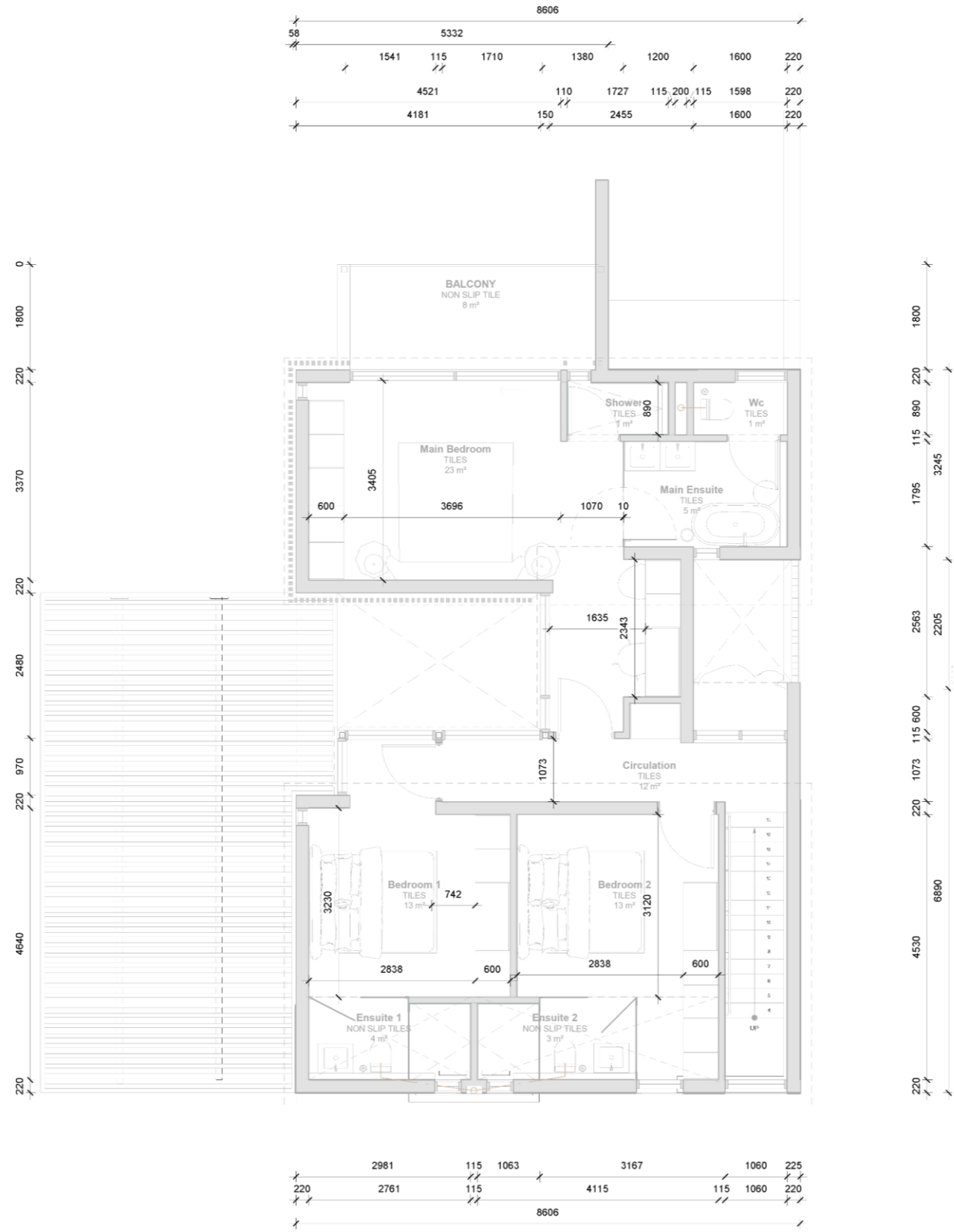


FIRST FLOOR

# TYPE A



GROUND FLOOR



FIRST FLOOR

# TYPE A KITCHEN:

## GENERAL INTERIOR:

An 8-10-seater DINING TABLE of a maximum of 2.5m - 3m (without console) x 1.2m.

## GENERAL INTERIOR:

The 2.4m long kitchen island can fit Three BAR CHAIRS not wider than 0.6m.

## CONSOLE:

The Dining allows for a Console/Server UNIT of up to 2.5m x 0.6m..



Always refer to your unit for the recommended furniture placement and type.



# TYPE A LIVING ROOM:

## GENERAL LOUNGE:

For the living room, consider a small L-SHAPED OR THREE-SEATER couch with two occasional chairs to fill your living room with tons of comfort. The maximum recommended couch size is 3m x 1m, or an L-shape not exceeding 3m x 1.8m

## CONSOLE:

The Dining allows for a MEDIA UNIT of up to 2m x 0.6m..

## COFFEE TABLE:

Comfortably fits a 1.2 Diameter coffee table or 1x1,2 Rectangular Table.

## STUDY:

An 1.5m x 0.6m Desk with shelving and chair will easily fit within the study



Always refer to your unit for the recommended furniture placement and type.



# TYPE A MAIN BEDROOM:

## GENERAL INTERIOR:

A Desk chair for vanity and décor table and Decor can easily be placed within the various open spaces and niches

## KING SIZE BED:

All main bedrooms are designed for a Standard King bed and Guest bedrooms for a Queen Size bed.

## SIDE TABLES:

700 x 700mm side tables recommended



Always refer to your unit for the recommended furniture placement and type.



# TYPE A PATIO:

## PATIO:

The Patio can easily accommodate an outdoor set x2 single and x2 double loungers with coffee table and outdoor braai.. Or six seater table.



Always refer to your unit for the recommended furniture placement and type.

# TYPE B

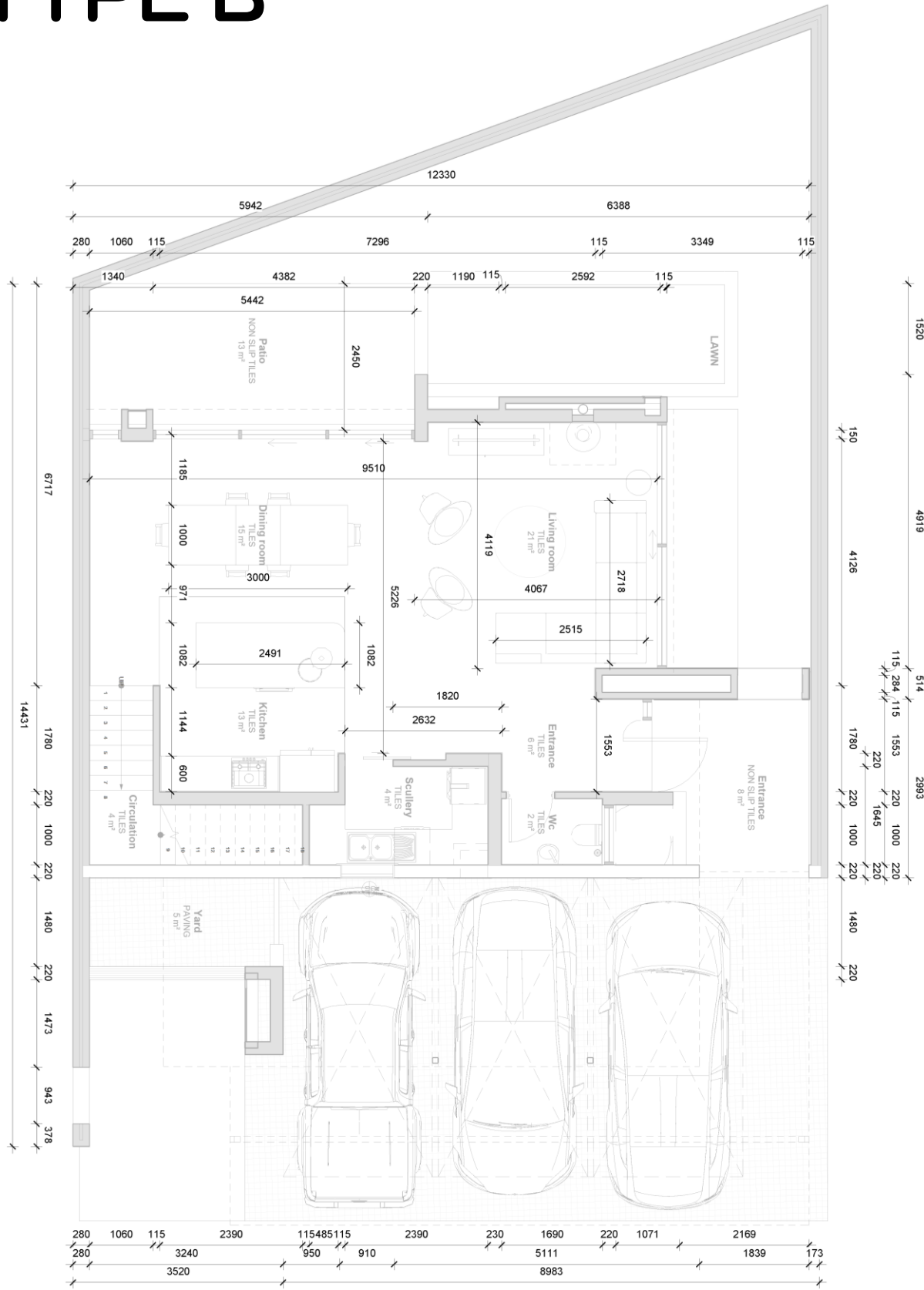


GROUND FLOOR

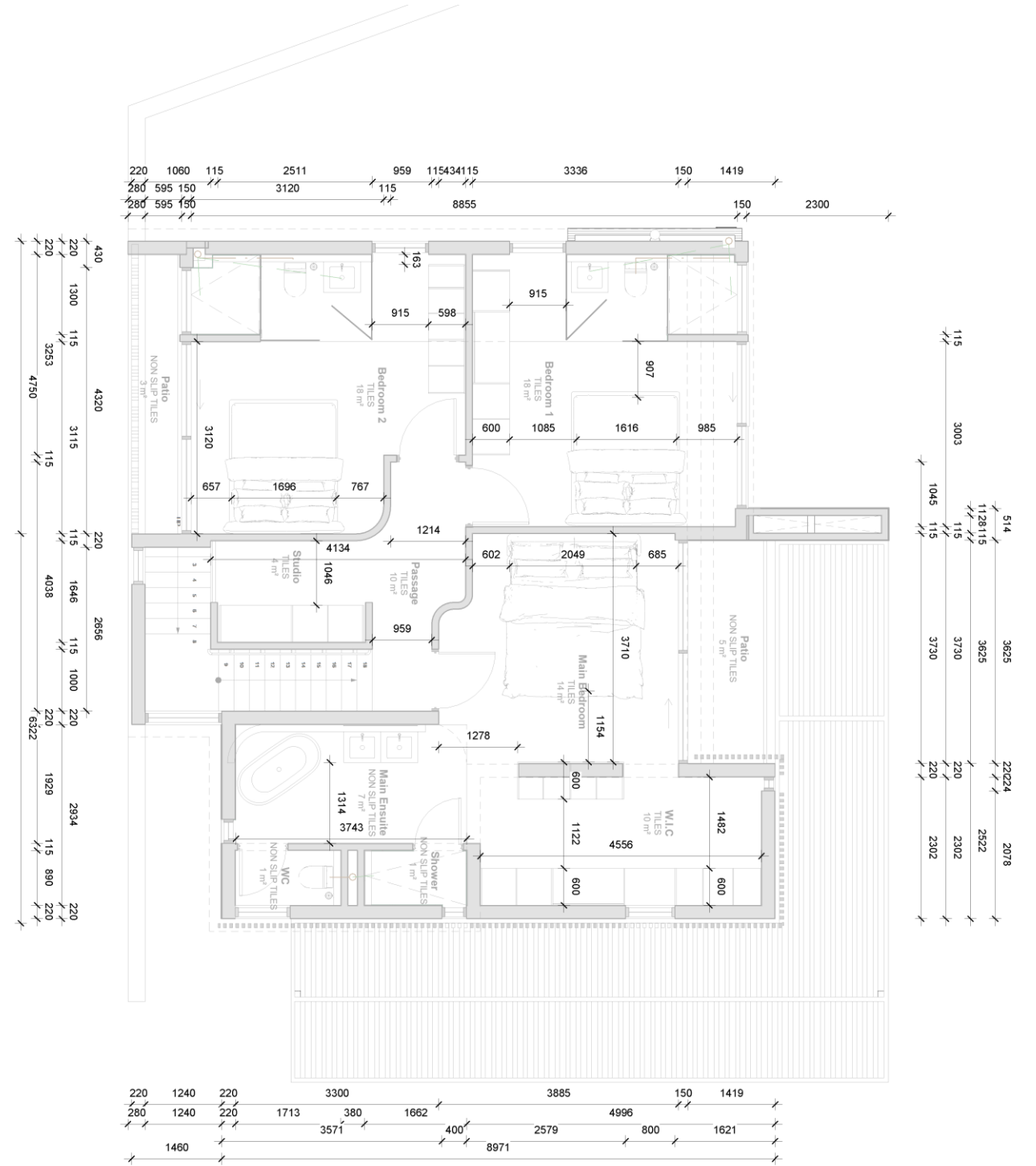


FIRST FLOOR

# TYPE B



GROUND FLOOR



FIRST FLOOR

# TYPE B KITCHEN & LOUNGE:

## DINNING AREA:

An 8-10-seater DINING TABLE of a maximum of 2.5m - 3m (without console) x 1.2m.

## MEDIA:

The Dining allows for a MEDIA UNIT of up to 2m x 0.6m..

## GENERAL LOUNGE:

For the living room, consider a small L-SHAPED OR THREE-SEATER couch with two occasional chairs to fill your living room with tons of comfort. The maximum recommended couch size is 3m x 1m, or an L-shape not exceeding 3m x 1.8m

## KITCHEN COUNTER:

The 2.4m long kitchen island can fit Three BAR CHAIRS not wider than 0.6m.

## CONSOLE:

The Dining Area allows for a Console/Server UNIT of up to 2.5m x 0.6m..



Always refer to your unit for the recommended furniture placement and type.



# TYPE B MAIN BEDROOM:

## GENERAL INTERIOR:

A Desk chair for vanity and décor table and Decor can easily be placed within the various open spaces and niches

## KING SIZE BED:

All main bedrooms are designed for a Standard King bed and Guest bedrooms for a Queen Size bed.

## SIDE TABLES:

700 x 700mm side tables recommended



Always refer to your unit for the recommended furniture placement and type.



# TYPE B PATIO:

## PATIO:

The Patio can easily accommodate an outdoor set x2 single and x2 double loungers with coffee table and outdoor braai. Or six seater table



Always refer to your unit for the recommended furniture placement and type.

