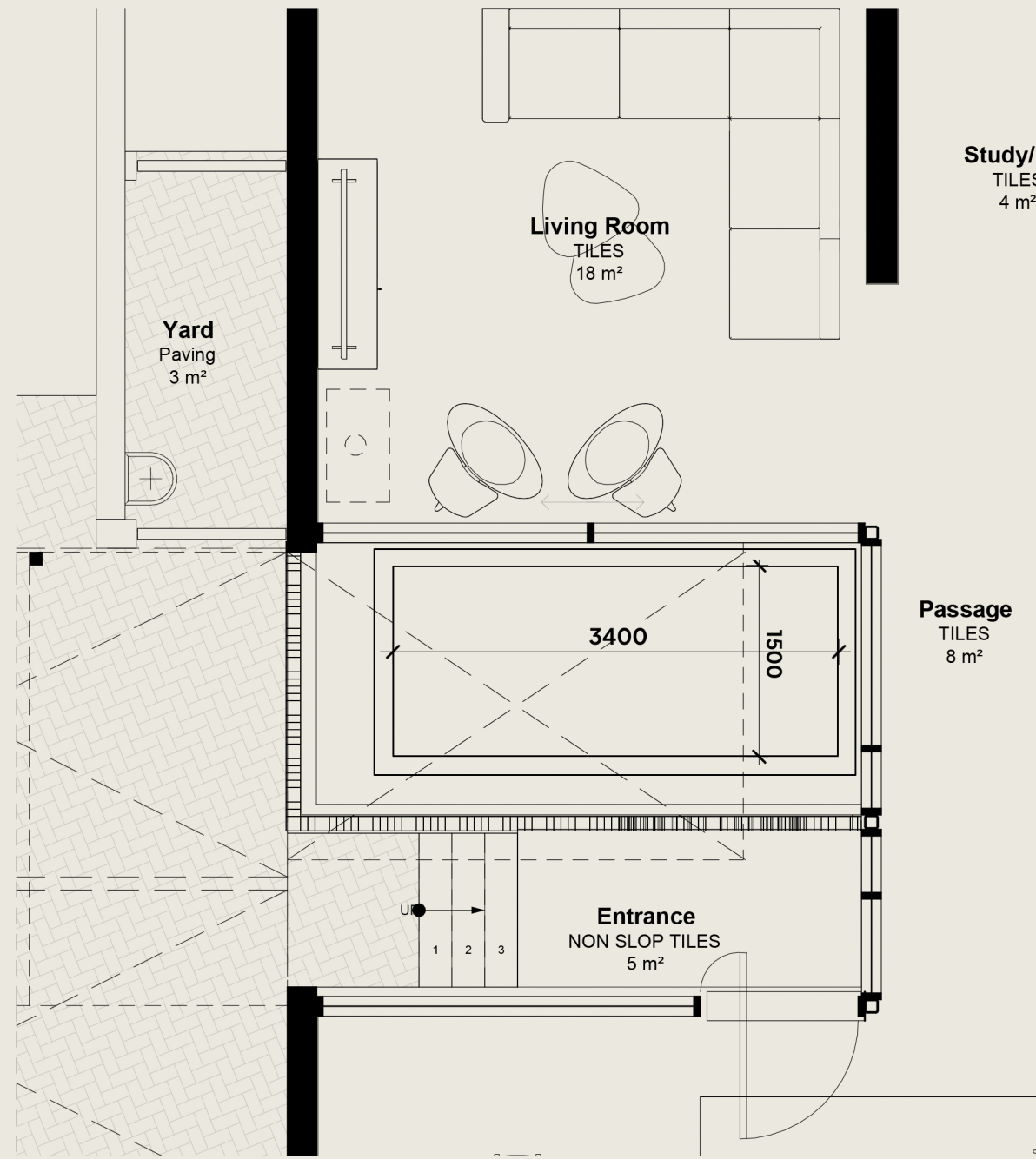


# POLARIS

The pool will be constructed as a reinforced brick / block masonry pool with a reinforced concrete floor slab, reinforced masonry walls, internal waterproof plaster, waterproofing system and final pool finish.

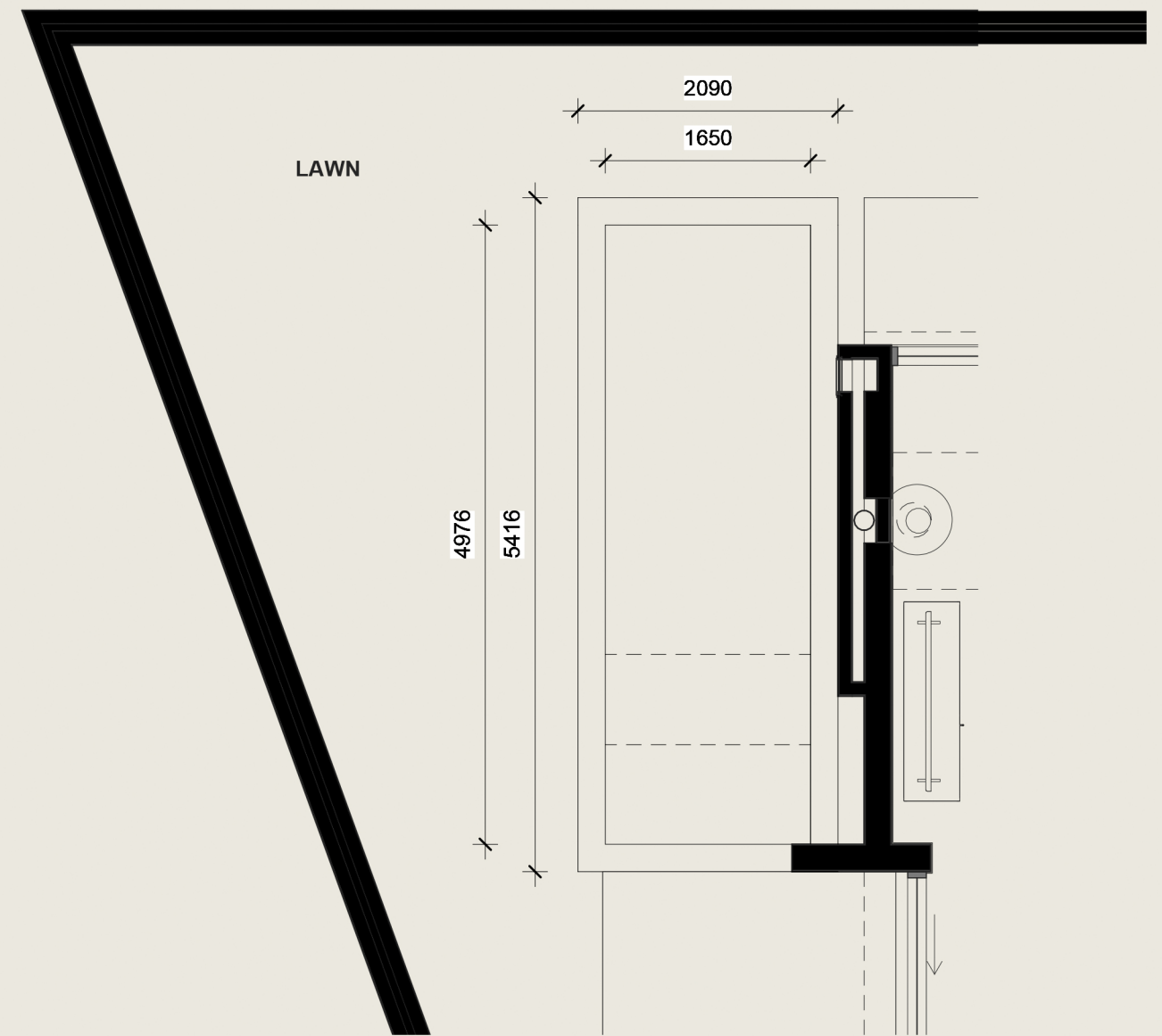


## TYPE A

Terms and conditions apply. In the event of any differences between this specification and other designs or verbal commitments, this specification will override. Unless reduced to writing, no verbal commitments will apply. All materials herein specified are subject to availability. If any materials are not readily available, or undue delay is experienced in obtaining them, the Seller shall have the right to use the nearest similar material available. The Seller cannot guarantee that the materials used will be the same colour or texture as any sample inspected by the Purchaser or shown to the Purchaser by the Seller or its representatives. Where any materials are not clearly specified or indicated on the drawings, the Seller shall have the right to use the material it considers to be the most suitable for the purpose.

\*Requoting may be required per unit for specific and unique items that differs from the typical unit.  
\*All items are subject to price variations and price increases.

For South Africa, pool access control is not optional. The National Building Regulations state that the owner of any site containing a swimming pool must ensure that access to the pool is controlled, and compliance is deemed to satisfy the regulation where access complies with SANS 10400-D.



## TYPE B