



FOR IMMEDIATE RELEASE

Systems With Intelligence Launches INTELLINSPECT™ to Automate Substation Visual and Thermal Inspections

Mississauga, ON – February 2, 2026 — Systems With Intelligence (SWI), a global leader in utility-grade Touchless™ Monitoring solutions, today announced the release of INTELLINSPECT™, a cloud-based inspection automation platform that enables utilities to streamline the analysis of visual and thermal sensor data.

INTELLINSPECT™ empowers utilities to increase the frequency of equipment inspections, without increasing workload, by automatically analyzing images collected by SWI's installed sensor network. The platform is designed to detect thermal and visual anomalies, identify trends, and produce actionable reports that flag issues before they result in failures and outages.

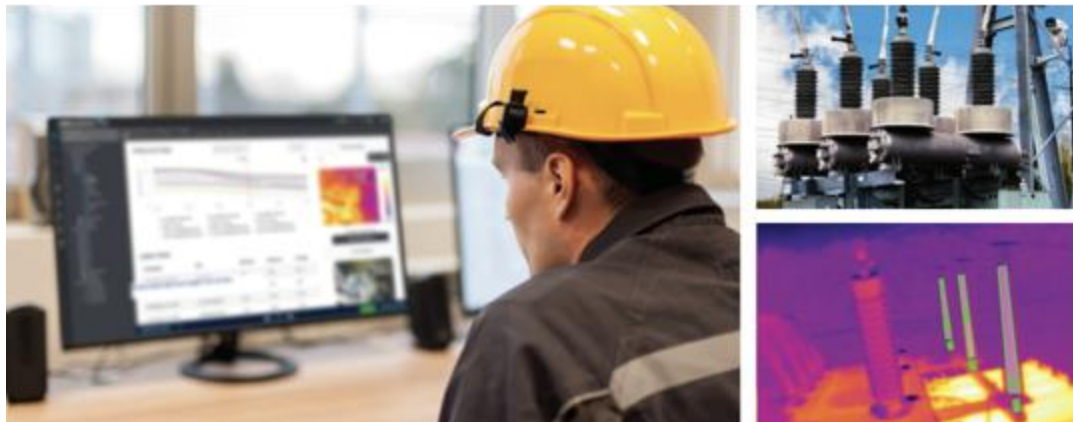
"Utilities are under pressure to do more with less, more inspections, more data, more awareness, with fewer resources," said Angelo Rizzo, President and CEO of Systems With Intelligence. "INTELLINSPECT™ helps bridge that gap. It allows operators to remotely assess the condition of assets with greater accuracy and efficiency, supporting a smarter approach to grid maintenance."

Instead of relying solely on alarms or manual image reviews, utilities can use INTELLINSPECT™ to schedule asset-specific inspections on a daily, weekly, or custom basis. The platform generates inspection reports that highlight performance trends, such as gradual temperature increases on specific bushings or visible signs of fluid leakage at the transformer base.

Key Capabilities

- Inspection automation: Eliminates the need for manual image reviews or routine site visits
- Anomaly detection: Identifies visual or thermal irregularities before alarms are triggered
- Trend analysis: Tracks temperature changes and surface conditions across assets over time
- Cloud-based reporting: Centralized dashboard provides clear summaries of inspection results
- AI-enhanced classification: Supports the identification of issues like leaks or abnormal heating patterns

Currently available to select customers, INTELLINSPECT™ will be formally introduced at DISTRIBUTECH 2026 at SWI's booth #4100.



Quick Facts

- Systems With Intelligence was founded in 2009
- Systems With Intelligence Touchless™ monitoring systems are installed with over 900 customers worldwide
- Systems With Intelligence's senior management team has over 100 years of collective experience in utility asset monitoring and communications technologies

About Systems With Intelligence Inc.

Systems With Intelligence Inc. (SWI) is a global provider of Touchless™ Monitoring Solutions for electric power, industrial, and oil & gas applications with over 900 clients worldwide. SWI systems collect and analyze the data that allows companies to increase safety and reliability while reducing operating costs. Coupling advanced sensor technology with advanced AI analytic algorithms, SWI solutions automate remote site monitoring and inspections.

Systems With Intelligence products are engineered to operate in the harshest environments and withstand high levels of electromagnetic interference, static discharge, and voltage surges found in industrial applications, ensuring uninterrupted operation. Providing a monitoring system that operates reliably and connects seamlessly allows customers to remain focused on their operations.



Further reading:

- [Register for white papers](#), case studies, application notes and the latest information from Systems With Intelligence.
- [Read the most recent](#) company news.
- [SWI product listings](#) and explanations.
- [SWI solutions](#) and explanations.

For more information contact:

Angelo Rizzo - President & CEO, Systems With Intelligence

angelo.rizzo@systemswithintelligence.com +1-289-562-0126