

INTELLINSPECT™

Automated Inspection and Reporting System

FEATURES

- Automated visual and thermal inspections
- Report generation
- Event detection and reporting

KEY BENEFITS

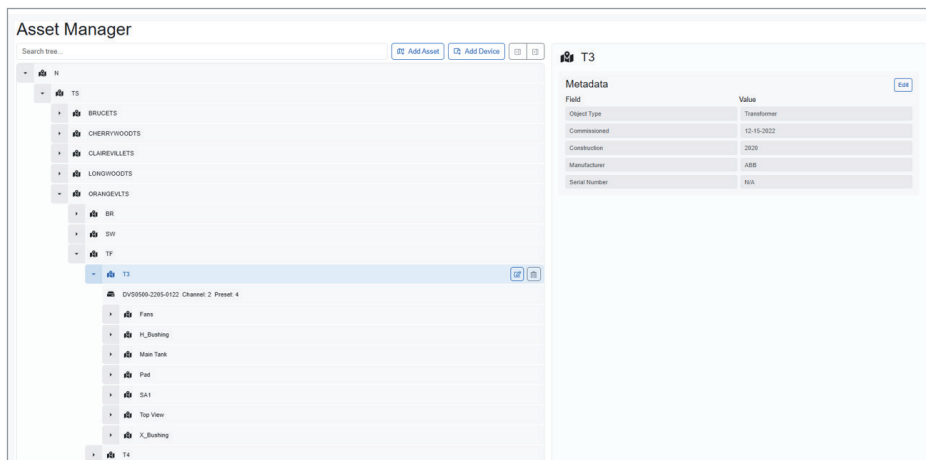
- Immediate notification of operational anomalies
- Reduced travel to site for inspections and maintenance
- Improved operational reliability
- Consistent reporting and visibility

The SWI Intellinspect™ system allows the quick setup and customization of remote visual and thermal inspections. Identify the points to inspect and the performance parameters and the system will automatically patrol the site and report back on any system irregularities. The system provides full situational awareness of all your sites in a single interface and allows you to take control and perform manual inspections at any time. SWI Intellinspect™ system enables quick setup and customization of remote visual and thermal inspections. Once inspection points and performance parameters are defined, the system automatically patrols sites, reports irregularities, and provides full situational awareness through a single interface—while allowing manual inspections at any time. Intellinspect™ includes the Asset Manager for organizing and navigating assets, the Alert Manager for centralized alert handling and tracking, and Virtual Inspection tools that support remote visual assessments, documentation, and reporting.



Asset Manager

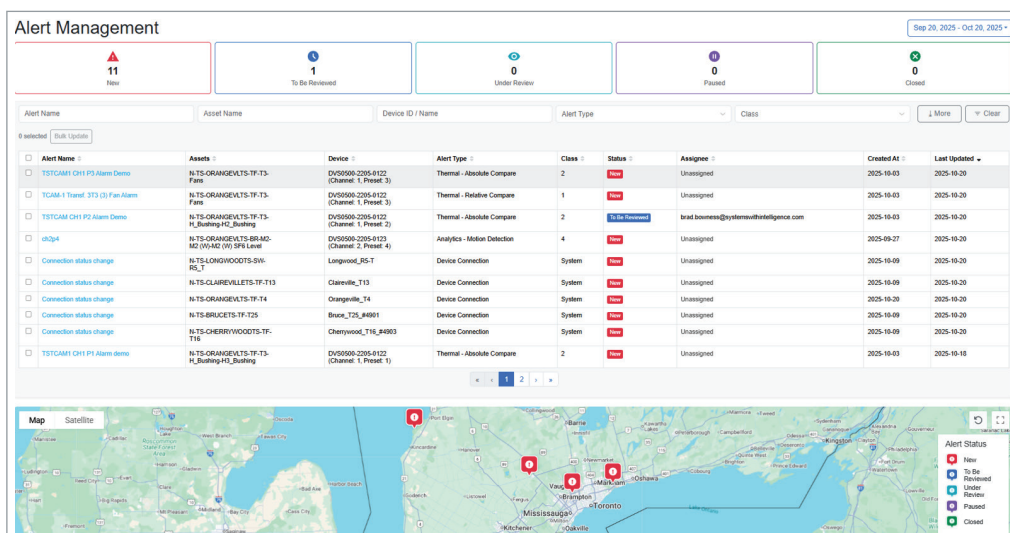
Easily create or integrate your asset hierarchy to bring context to all content within Intellinspect™ Solution.



Multi-level hierarchy can be defined and asset meta-data can easily be added to bring additional context to the user

Alert Manager

The Alert Manager provides operators with a centralized interface to monitor, investigate, and manage all system alerts in real time. Alerts are displayed on a dynamic dashboard, allowing users to quickly identify the type, severity, and location of each event. From this interface, operators can acknowledge new alerts, drill down into detailed information to determine root causes, and document their findings. The system enables alerts to be paused when no immediate action is required, cleared once resolved, or escalated through the creation of follow-up actions and work orders for further investigation or maintenance. By consolidating all alert activity into one intuitive workspace, the Alert Manager streamlines incident response, ensures accountability, and enhances overall situational awareness across all monitored sites.





Point	Temp 1	Temp 2	Temp 3
1	21.0	18.9	26.9 C
2	20.8	14.4	24.1 C
3	21.1	15.6	26.3 C
4	20.9	15.6	24.0 C
5	21.1	19.3	26.8 C
6	21.2	14.5	22.5 C

Virtual Inspection

The Virtual Inspection module enables the collection and review of both visual and thermal images from substations to assess asset condition over time. Visual inspections can be configured to focus on selected assets during a specific period, generating inspection reports that summarize findings for follow-up or work order generation. The Inspection Manager presents collected data alongside pass/fail criteria and asset status to support decision-making. For thermal inspections, temperature data is gathered from defined points—such as bushings, arrestors, connections, load tap changers, fans, radiators, and switches—and manually reviewed to flag areas as acceptable or unacceptable. This integrated view enhances situational awareness and supports proactive maintenance planning.

Schedule Setup
Every 1 Day(s) at 10 AM (GMT-04:00: America/Toronto) starting 2025-10-20

Device Selection

- Selected Devices:
 - EV5598-2383-0147 Channel 1 Preset 11
 - Pat
 - EV5598-2383-0147 Channel 1 Preset 31
 - EV5598-2383-0147 Channel 2 Preset 4

Assessment Details

Asset: N-TS-ORANGEVLT5-TF-T3_X_Bushing_H1_Bushing (Status: Pass)

Asset: N-TS-ORANGEVLT5-TF-T3_Top View (Status: Pass)

Asset: N-TS-ORANGEVLT5-TF-T3 (Status: Pass)

Asset: N-TS-ORANGEVLT5-TF-T3_Pad (Status: Pass)

Asset: N-TS-ORANGEVLT5-TF-T4 (Status: Pass)

Asset: N-TS-ORANGEVLT5-TF-T3_H1_Bushing_H2_Bushing (Status: Pass)


Validate Images
Status: Select...
Notes: (Max 200 characters allowed)

Device Images
2025-10-20 9:13 a.m. Show Previous | 2025-10-20 9:13 a.m. Show Previous



Virtual Inspection

The Virtual Inspection module leverages site-installed visual cameras to automatically patrol and capture images at pre-defined inspection points across the facility. These images are remotely reviewed by operators, who access asset condition, mark images as acceptable or unacceptable, add notes, and flag key visuals for follow-up. Typical inspection points include bushings, arrestors, electrical connections, load tap changers, fans, radiators, switches, gauges, and cooling systems. Operators can flag signs of leaks, low fluid levels, rust, corrosions, physical damage, cracks, chips, burns, and abnormal gauge readings. A visual inspection report is then generated to support follow-on actions, work order creation, and maintenance tracking.

systems with intelligence 

Page 1 of 3

Work Order #: 12345
Inspected by: edgar.sotter@systemswithintelligence.com
Inspected on: 2025-09-26

Summary


Asset	Status
N-TS-ORANGEVLTS-TF-T3-H_Bushing-H0_Oil	Acceptable
N-TS-ORANGEVLTS-TF-T3-H_Bushing-H3_Oil	Unacceptable
N-TS-ORANGEVLTS-TF-T3	Acceptable
N-TS-ORANGEVLTS-TF-T3-X_Bushing	Unacceptable
N-TS-ORANGEVLTS-TF-T3-Pad	Unacceptable
N-TS-ORANGEVLTS-TF-T3-X_Bushing-X1_Oil	Unacceptable
N-TS-ORANGEVLTS-TF-T3-X_Bushing-X3_Bushing	Acceptable
N-TS-ORANGEVLTS-TF-T3-H_Bushing-H2_Oil	Acceptable


Detailed Results

Asset: N-TS-ORANGEVLTS-TF-T3-H_Bushing-H3_Oil
Status: **Unacceptable**
Notes: Low level

Asset: N-TS-ORANGEVLTS-TF-T3-X_Bushing
Status: **Unacceptable**
Notes: Rust

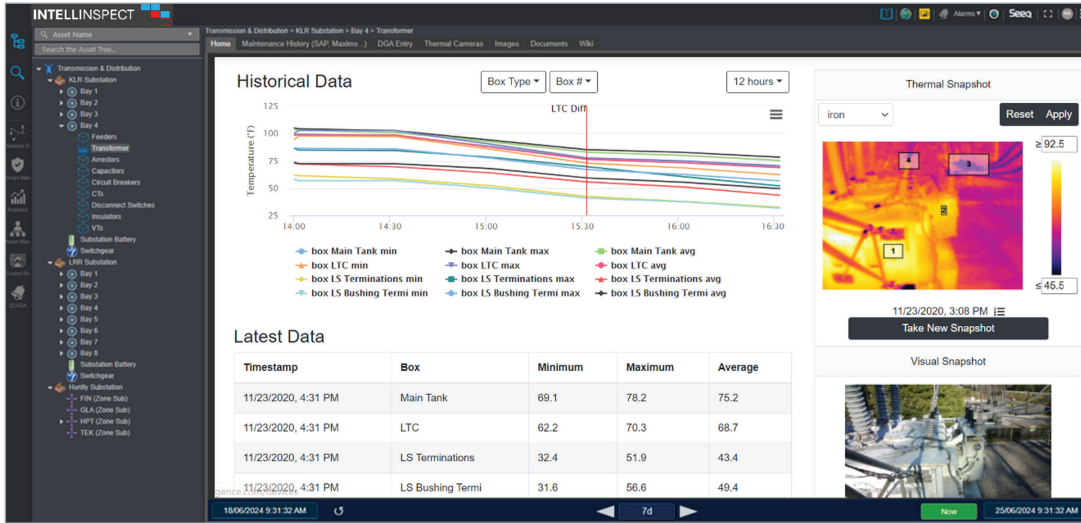


systems with intelligence 

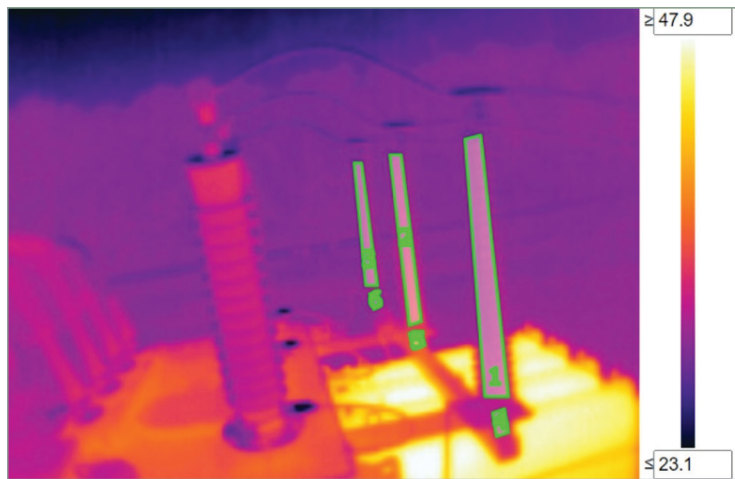




INTELLINSPECT™ User interface examples



Access asset data and images from all sites



Setup target inspection points.

Configure Thermal Alarm

Name:

Description:

Condition

Condition Type:

Relative Comparison:

box 1 = Ph1 HS LA, box 2 = Ph2 HS LA, box 3 = Ph3 HS LA, box 4 = Ph1 HS Ref, box 5 = Ph2 HS Ref, box 6 = Ph3 HS Ref

The min temperature of box 1 is greater than box 2 by °C for 1 reading(s)

Output

Snapshot: Thermal

Digital Output: N/A

Alarm Subscriptions

Cancel Save

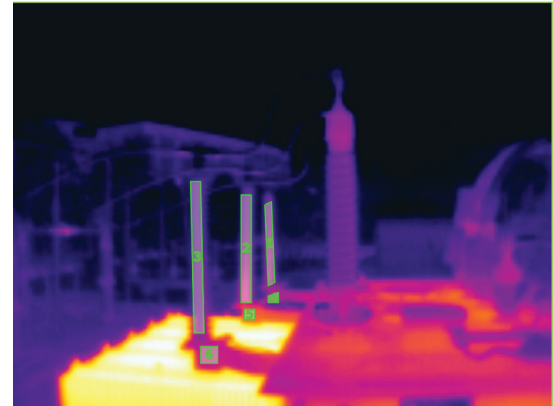
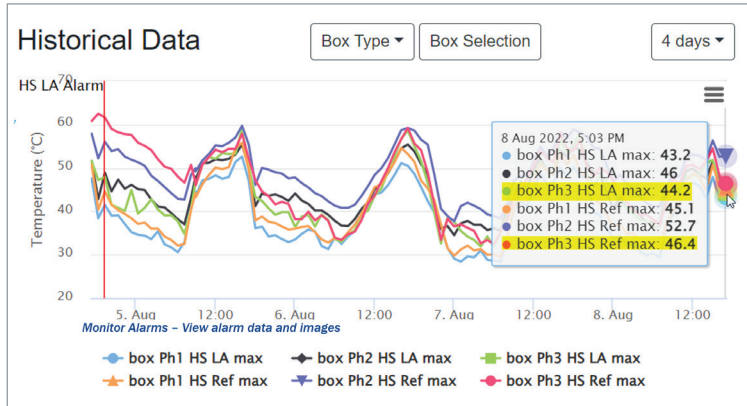
Setup alarm parameters



Trend thermal data



INTELLINSPECT™ USER INTERFACE EXAMPLES



Monitor alarms, trend historical data.

Work Order #: 96875 | Assignee: johnson@SWI.com | Inspected on: 24/01/2025 | Systems with Intelligence

Summary

Row#	Asset Name	FLOC	Manufacturer	Model	Status
1	BR-T4Y-T4Y-Bushing	N-TS-GEVLTS-BP-T4Y	-	-	Acceptable
2	BR-M2-M2 (W) -M2 (W) SF6 Level	N-TS-GEVLTS-BP-M2	-	-	Unacceptable

Detailed Results

Asset Name: BR-M2-M2 (W) -M2 (W) SF6 Level
FLOC: N-TS-GEVLTS-BR-M2 | Status: Unacceptable

Orangeville, ON, TS, PTZ 2
01/23/2025 14:28:47
Z: 1165.400
H: 17.18° T: 20.60°

Notes:
inspection notes

Orangeville, ON, TS, TCM 2
01/24/2025 12:51:29

Run and View Inspection Reports



Follow Us:



Systems With Intelligence Inc.
6889 Rexwood Road, Unit #9
Mississauga, Ontario, CANADA
L4V 1R2

Tel: +1-289-562-0126
Fax: +1-289-562-0152

General Inquiries:
info@systemswithintelligence.com

Sales Inquiries:
sales@systemswithintelligence.com

Product Support:
support@systemswithintelligence.com

All specifications in this document are subject to change without notice.

© Copyright 2025 Systems With Intelligence Incorporated. All rights reserved.