

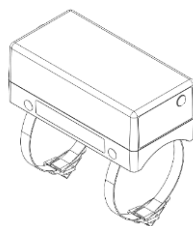
FeedFlo



FLO75 Sensor Datasheet

Published November 27, 2024

Technological Specifications	
General	
Manufacturer	FeedFlo
Model #	FLO75
Product Description	Feed measurement sensor
Country of Origin	Canada
Mechanical Properties	
Enclosure Material	PA6-30GF
Protection Level	Unrated - target rating of IP66
Electrical Properties	
Input Power	2W
Input Type	RJ45 PoE
Network Requirements	
Communication Standard	POE IEEE802.3af
DHCP	Enabled
Data Usage (typical)	500 MB/Month
Compatibility	
Delivery Method	Flexible Auger, PVC, 75mm OD
Shipping Details	
Weight without Packaging	353 g (12.5 oz.)
Weight with Packaging	403 g (14.2 oz.)
Packing Size	76x76x152 mm (3x3x6")



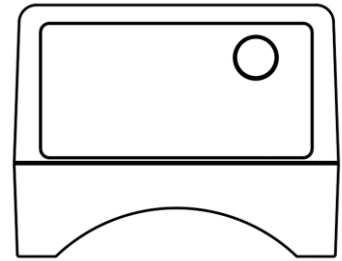
Feed Flow Limited
 300 Keewatin St., Winnipeg, MB R2X 2R9, Canada
support@feedflo.com | +1 (431) 803-0831
www.feedflo.com



LED INDICATORS

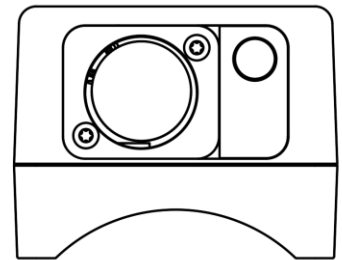
FEED LINE STATUS

A light found on the front of the sensor shows the status of the feed line at a glance, indicating if the pipe is full or empty (red or green), and if the auger is running (flashing).



NETWORK STATUS

A light found next to the connector indicates the network status and can be helpful to ensure that the sensor is properly connected to the internet.



APPS

Web

my.feedflo.com



iOS

FeedFlo



Android (Play Store)

FeedFlo

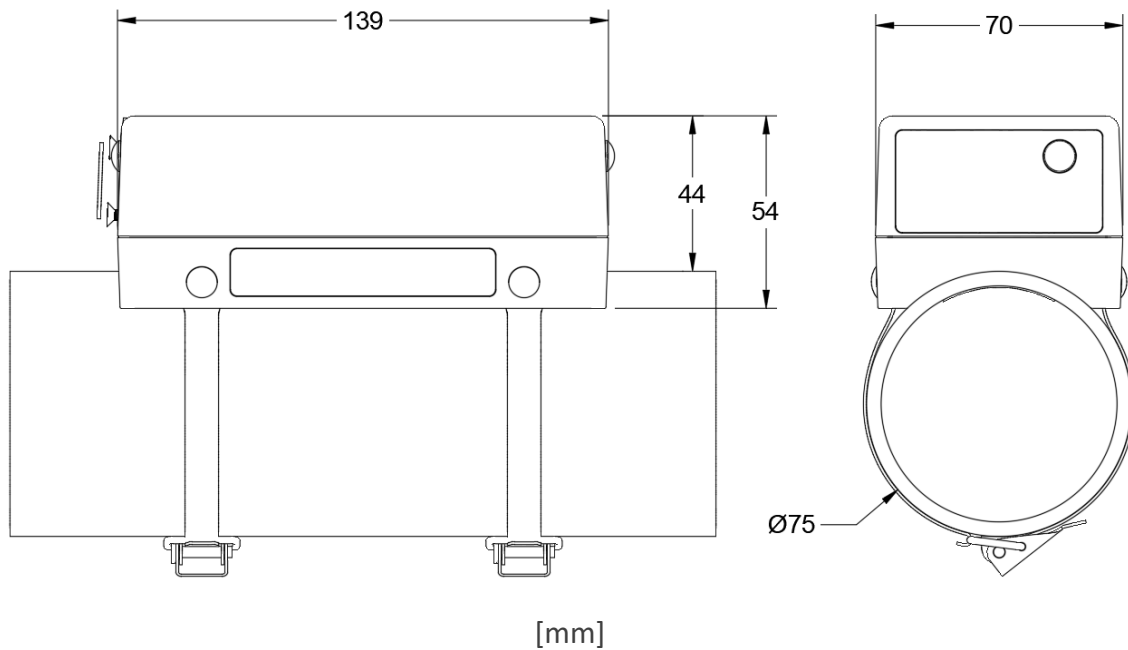


PACKAGE CONTENTS

- (1) FLO75 Sensor
- (4) Clamp sections (2 latching ends, 2 receiving ends)
- (4) Push rivets for securing the clamp sections to the sensor
- (1) Waterproof male ethernet connector housing



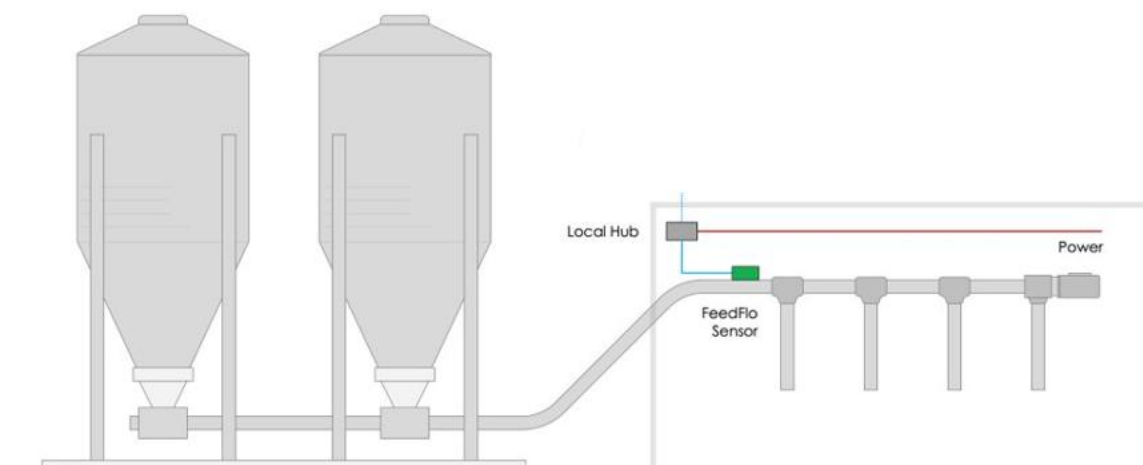
MECHANICAL SPECIFICATION



INSTALLATION

LOCATION CRITERIA

For each sensor, select a horizontal section of pipe inside the barn before the first feed drop as illustrated below.



DRILLING A HOLE IN THE PIPE

Using the provided self-installation kit, follow the installation guide to drill a 32mm hole in the pipe for each sensor being installed.

<https://youtu.be/FFOo2ledpyE>

SECURING THE CLAMPS TO THE SENSOR

<https://youtu.be/qyl8refwfvU>

SECURING THE SENSOR TO THE PIPE

https://youtu.be/PASWw_xejYk

CLEANING

The FLO75 may be cleaned simply by leaving it in place while the barn is being power washed. Do not expose it to water when it is removed from the pipe.

REPAIR

The FLO75 contains no user-serviceable parts. If it stops working properly for any reason, please contact us or your FeedFlo dealer to have it replaced.

PATENTS

FeedFlo holds patents for its core technology and approach in many key markets:

“Flow rate estimation of a fluent solid material in a generally horizontal pipe”

Region	Number	Status
Canada	CA3149327A1	Granted
USA	US11650090B2	Granted
Mexico		Granted
Brazil	BR 11 2022 017063 7	Pending
EU	EP4111141A1	Pending
Australia	AU2021227729B2	Granted
China	CN115427769A	Pending

