



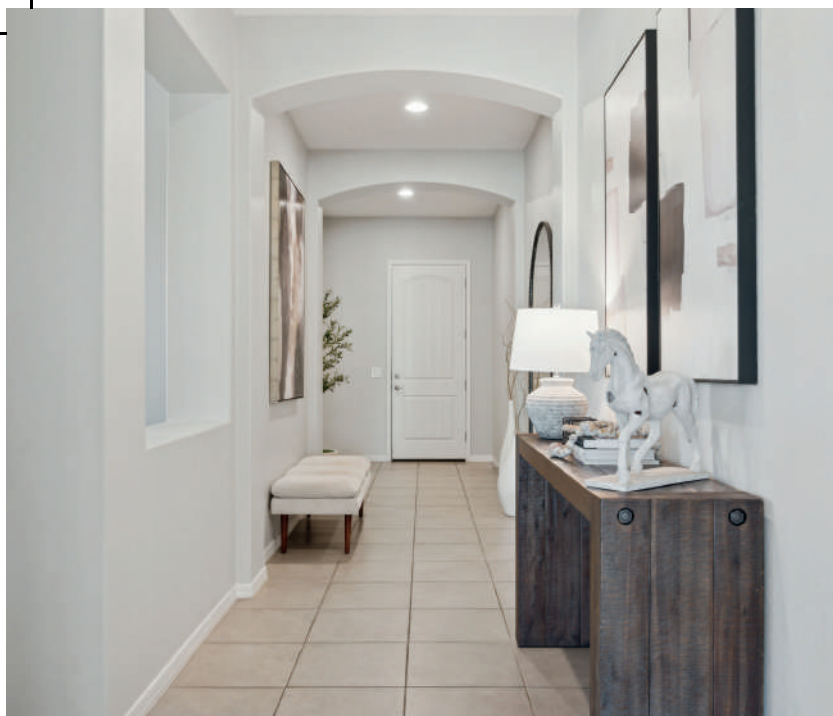
ELPIS

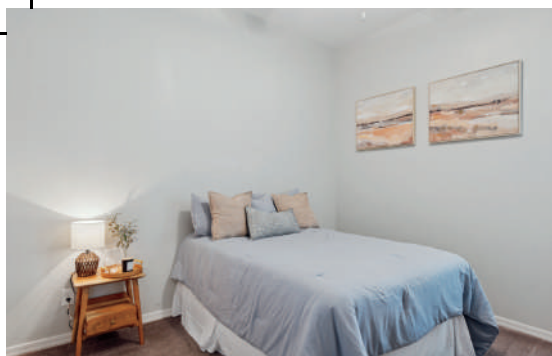
REAL ESTATE BOUTIQUE



19038 N Arbor Dr

MARICOPA, ARIZONA 85138





ABOUT THE PROPERTY

Located in the desirable Glennwilde community of Maricopa, this 2019 Fulton-built home offers an exceptional blend of comfort and convenience. Positioned on a private corner lot with no rear neighbors, this residence provides a peaceful setting while maintaining close proximity to community amenities. A short 7-minute walk brings you to the community pool, while a quick 3-minute bike ride takes you to the expansive 28-acre Pacana Park with its fishing lake, sports fields, and walking paths.

Adding to this home's appeal is its rare assumable 2.75% FHA loan, providing significant financial advantages in today's higher interest rate market. With a thoughtful single-level design, energy-efficient construction, and quality finishes throughout, this home represents both smart value and comfortable Arizona living.



SCAN FOR
MORE DETAILS



PROPERTY FEATURES

2,515 Sq Ft / 4 Bedrooms / 3 Bathrooms / Den /
Assumable 2.75% FHA Loan / 10-Foot Ceilings /
Oversized Kitchen Island / Gas Cooktop / Stainless
Appliances / White Cabinetry with Designer Finishes /
Primary Bath with Quartz Countertops / 3-Car Tandem
Garage / LP Tech Shield Radiant Barrier Roof / Dual-
Pane Low-E Windows



ELPIS

REAL ESTATE BOUTIQUE



Aimee Burrell

CEO | DESIGNATED BROKER

Office (480) 447-2199

Mobile (480) 378-2514

Email AB@ElpisRealEstate.com

Website ElpisRealEstate.com

1820 East Ray Road
Chandler Arizona 85225

  @elpisrealestate

