

16,900 SF

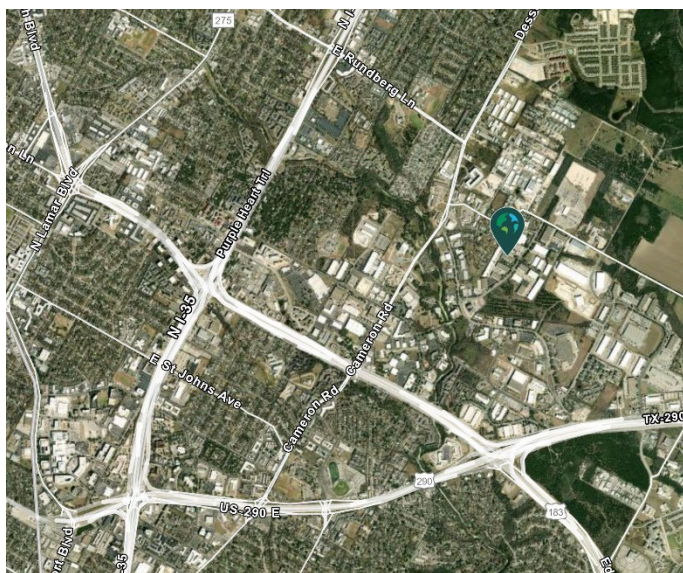
Industrial Space For Lease



Prologis Walnut Creek 17



8606 Wall Street, Suite 1740
Austin, TX 78754 USA



LOCATION

- Located in Walnut Creek Business District Park, Austin's largest master-planned, mixed use business park
- Direct entry from Wall Street
- Located near Hwy 183 and Hwy 290 intersection, just east of IH-35
- Convenient to major employers: Applied Materials, US Farathane, Flextronics, HID Global, and Samsung Semiconductor

FACILITY

- Approximately 3,289 sf office
- 20' clear height
- 40' x 40' column spacing
- 5 dock high doors
- 1 drive-in door
- ESFR sprinkler system

ADVANTAGES AND AMENITIES

- End cap space
- Climate controlled warehouse production area
- Rear load configuration
- Access to the [Prologis Essentials](#) platform, which includes:
 - [Operations Essentials](#)
 - [Energy + Sustainability Essentials](#)
 - [Mobility Essentials](#)
 - [Workforce Essentials](#)

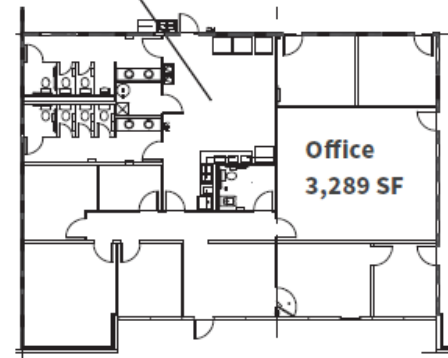
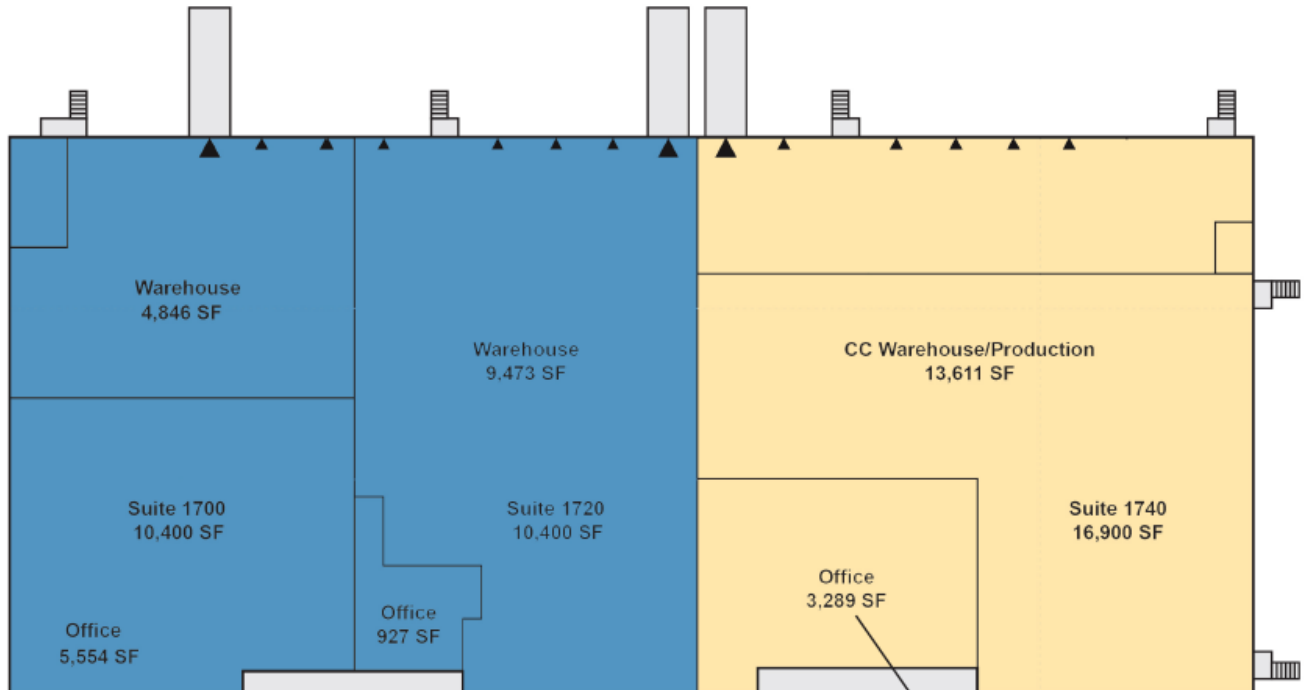
Your single-source service for efficient move-in and operations: [prologisessentials.com](https://www.prologisessentials.com)

16,900 SF

Industrial Space For Lease



Prologis Walnut Creek 17



Live Oak

Ryan Whalen
rwhalen@liveoak.com
ph +1 512 472 5000
cell +1 512 803 9928
2725 Bee Cave Road
Austin, TX 78746 USA

Live Oak

Doug Thomas
doug@liveoak.com
ph +1 512 472 5000
cell +1 512 695 3985
2725 Bee Cave Road
Austin, TX 78746 USA

Live Oak

Dax Benkendorfer
dax@liveoak.com
ph +1 512 472 5000
cell +1 512 848 2581
2725 Bee Cave Road
Austin, TX 78746 USA

Prologis

Whitney Williamson
wwilliamson@prologis.com
ph +1 972 884 9244
cell +1 817 781 5186
600 Congress Ave #14026
Austin, TX 78701 USA

