

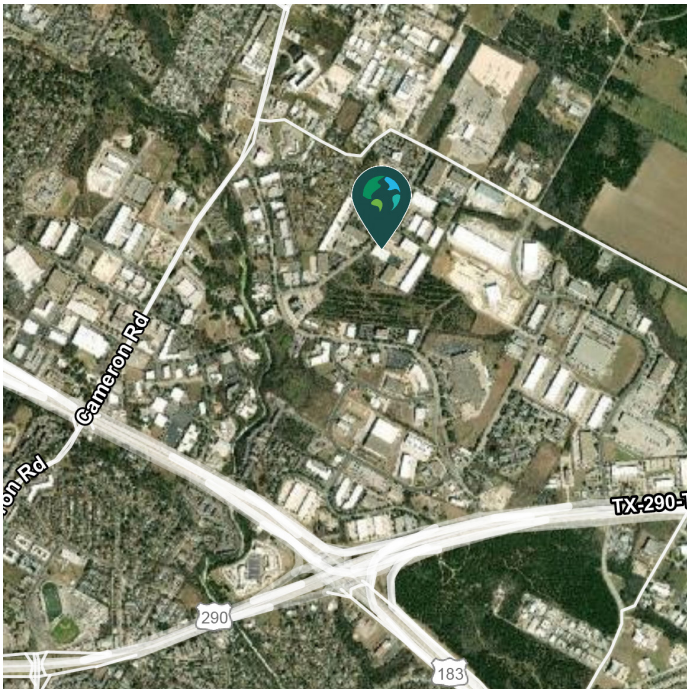
21,813 SF
Industrial Space For Lease



Prologis Walnut Creek 4



8619 Wall Street, Building 4
Austin, TX 78754 USA



LOCATION

- Located in Walnut Creek Business District Park, Austin's largest master-planned, mixed use business park
- Located near Hwy 183 and Hwy 290 intersection, just east of IH-35
- Convenient to major employers: Applied Materials, US Farathane, Tesla, HID Global, and Samsung Semiconductor

FACILITY

- Approximately 2,062 SF office
- 24' clear height
- 40' x 40' column spacing
- 4 dock high doors with 4 levelers
- 100% climate controlled
- ESFR sprinkler system

ADVANTAGES AND AMENITIES

- Rear load configuration
- Access to the [Prologis Essentials](#) platform, which includes:
 - [Operations Essentials](#)
 - [Workforce Essentials](#)
 - [Transportation Essentials](#)

Your single-source service for efficient move-in and operations: [prologisessentials.com](https://www.prologisessentials.com)

21,813 SF
Industrial Space For Lease



Prologis Walnut Creek 4



Live Oak
Ryan Whalen
rwhalen@liveoak.com
ph +1 512 472 5000
cell +1 512 803 9928
2725 Bee Cave Road
Austin, TX 78746 USA

Live Oak
Doug Thomas
doug@liveoak.com
ph +1 512 472 5000
cell +1 512 695 3985
2725 Bee Cave Road
Austin, TX 78746 USA

Live Oak
Dax Benkendorfer
dax@liveoak.com
ph +1 512 472 5000
cell +1 512 848 2581
2725 Bee Cave Road
Austin, TX 78746 USA

Prologis
Whitney Williamson
wwilliamson@prologis.com
ph +1 972 884 9244
cell +1 817 781 5186
600 Congress Ave., Suite 14026
Austin, TX 78701 USA