

netnology

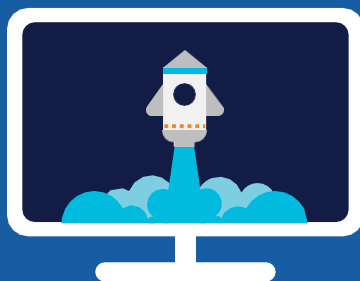
Cisco AI FACTORY Health Check Offer

Overview

The Cisco AI FACTORY Health Check Service is designed to provide a comprehensive assessment of the customer's existing AI FACTORY environment. The engagement evaluates fabric performance, integration posture, and operational efficiency while identifying any configuration or policy gaps that may affect scalability, automation, or security. The outcome enables customers to achieve optimal performance, reliability, and manageability across their AI FACTORY deployment.

Discovery

- AI FACTORY infrastructure topology and scale-unit architecture (GPU server count, AI cluster layout, spine/leaf fabric design, rail-optimized network connectivity, and integration with upstream data-center networks and storage platforms).
- Configuration details from Cisco Nexus switching fabric and UCS GPU compute infrastructure, including leaf-spine network configuration, high-bandwidth Ethernet connectivity (100/400/800 Gb), RoCE/RDMA enablement for GPU communication, server-to-fabric connectivity, GPU node roles within the AI cluster, Cisco Security (AI-Defense, Secure Firewall), Splunk.



About Netnology

Netnology brings a proven approach to building and managing application-rich complex software defined, cloud and full-stack observability environments leveraging years of industry experience working with large scale multi-vendor networks. We help enterprises and service providers reduce time from concept to value through our software and services.



Recommendations

- Provide feedback and recommendations on:
 - AI FACTORY architecture and scalability
 - AI networking fabric design and Security design
 - GPU-to-network performance, QoS policies
 - Day-0/1/2 operations.
- Identify areas of improvement and overall optimization of the AI FACTORY environment.

Deliverables

- Executive Summary Presentation
- Health Check Review Report
- Findings and Recommendations Document

Award-Winning SDx and Cloud Solution Provider

