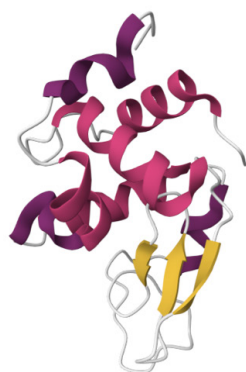


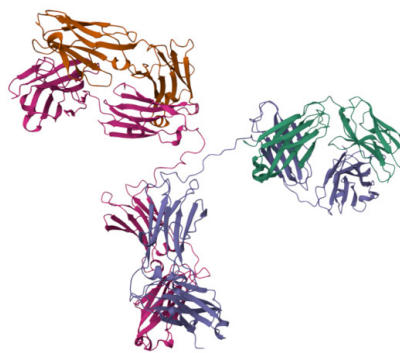
## Structural Characterization and Comparison of Temperature Stress on a Protein Library Across pH and Concentration using Microfluidic Modulation Spectroscopy

### Abstract

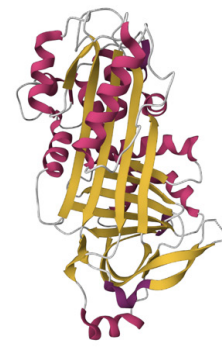
Thermal stress is the most common stress condition utilized for gauging protein stability. However, techniques to measure the effects of thermal stress such as UV melts, circular dichroism (CD) and differential scanning calorimetry (DSC) typical only provide an overall melt temperature,  $T_m$ , and thermodynamic parameters, with very low granularity on structural changes associated with the melt. Microfluidic Modulation Spectroscopy (MMS) is an automated mid-IR technique capable of measuring protein secondary structure at very high resolution across a broad range of concentrations and buffer conditions. MMS can be used to measure and monitor the structural changes that are occurring, leading to protein unfolding, and then thermally induced aggregation. In this study, we started by measuring thermal unfolding for lysozyme across a range of pH values and found the  $T_m$  to be pH dependent. We next melted an IgG across a range of concentrations and found the  $T_m$  to be modestly concentration independent. Finally, we used MMS to determine the structural differences of the two  $T_m$  values determined for ovalbumin.



Lysozyme  
(PDB ID: 1DPX)



IgG  
(PDB ID: 1IGT)



Ovalbumin  
(PDB ID: 1OVA)

### Introduction

The melting temperature ( $T_m$ ) of biologic drugs is critical to characterization as it sheds light on functionality, manufacturability, and formulation stability in particular. Furthermore,  $T_m$  is a versatile parameter that can report on the stabilizing effects of small molecule drug candidates on target proteins or RNA.  $T_m$  refers to the temperature at which the molecule unfolds and is specifically the temperature at which half the molecules are unfolded and half are folded. Therefore, the higher the  $T_m$ , the more stable the macromolecule. Historically, instruments that measure  $T_m$  provide just the  $T_m$  with no other information or context on the structure.<sup>1</sup> However, here we present a way to determine  $T_m$  using MMS, giving full secondary structure information at each temperature along the ramp so we can observe which structural components are changing, and use 2D heat maps to see the effects of different drugs or formations on the stabilities of different parts of the biologic.

MMS interrogates the amide I band of the IR spectrum to sensitively probe protein structure while modulating against the reference buffer for accurate, real-time background subtraction in aqueous-based samples.

- Biosimilars
- mAbs
- ADCs
- AAVs
- Ligand Binding
- Protein/Peptide Analysis
- VLPs
- Nucleic Acid
- Fusion Proteins
- Enzyme Analysis

- Aggregation
- Quantitation
- Structure
- Stability
- Similarity

Application Note  
AUG 2024

## Introduction, continued

As it is so sensitive, this technique is particularly useful for quality control and is compatible with many different formulation buffers. The MMS system, Aurora Tx, was used for this study and is equipped with a high-power Quantum Cascade Laser that is significantly more intense than traditional FTIR light sources. The combination of more light and modulating background subtraction makes MMS about 30 times more sensitive than FTIR and 5 times more sensitive than CD to small changes in structure.<sup>2</sup> Given that MMS is a flow system, our unique temperature control of the cell means that samples are only exposed to the increased temperature right before sample measurement. This gives a  $T_m$  that is relative to the real-time temperature increase.



Figure 1. Aurora Tx used for structure and  $T_m$  characterization.

## Methods

### Lysozyme sample preparation:

Hen Egg White Lysozyme (HEWL) from Sigma (#L6876) was prepared at 2 mg/mL in 100 mM citrate buffer at pH 3, 100 mM glycine buffer at pH 4, 100 mM acetate buffer at pH 5, and 100 mM phosphate buffer at pH 7.

### IgG sample preparation:

Lyophilized IgG from bovine serum (Sigma #15506) was prepared at 0.5, 1, and 2 mg/mL in phosphate buffer saline (PBS) pH 7.4.

### Ovalbumin sample preparation:

Ovalbumin was dissolved at 5 mg/mL in PBS buffer and incubated in a water bath at 60, 65, 70, 75, 80°C, and boiling water for 5 mins, cooled to room temperature and run on the Aurora in addition to a control sample that was not exposed to increased temperature.

### Thermal Ramping Methods:

All samples were run on an Aurora Tx from 25-95°C at a ramp rate of 1°C/min and a modulation speed of 1 Hz. Samples are maintained in a room temp 96 well plate, while the flow cell is ramped from 25-95°C.

The backing pressure was adjusted to maintain 60  $\mu$ L/min flow rate, and the instrument collects a full spectrum from 1590-1710  $\text{cm}^{-1}$  every 17 seconds, yielding about 250 spectra for the full ramp.

## Results and Discussion

Formulation development is the process for determining the optimum buffer and excipients for a biologic drug to be the most stable, soluble, and active. One of the most important features in determining biologic stability is the pH. The pH condition that results in the highest  $T_m$  typically corresponds to the condition with the highest thermal stability for the macromolecule. Figure 2A shows the melt curve of lysozyme at pH 3 focusing on just the signal at 1656  $\text{cm}^{-1}$ , which corresponds to the amount of alpha-helical structure. The first derivative plot demonstrates how the  $T_m$  can be calculated from the curve by showing a peak at the temperature that has the largest slope and, therefore, the fastest rate of alpha-helical unfolding. Figure 2B depicts the melt curves for lysozyme collected at four different pH values. The sample at pH 4 results in the highest  $T_m$ , indicating it is the most stable formulation pH, and the pH 3 sample has the lowest  $T_m$ , making it the least thermally stable. This result is in agreement with other reports from the literature comparing the stability of HEWL at different pH values.<sup>3</sup>

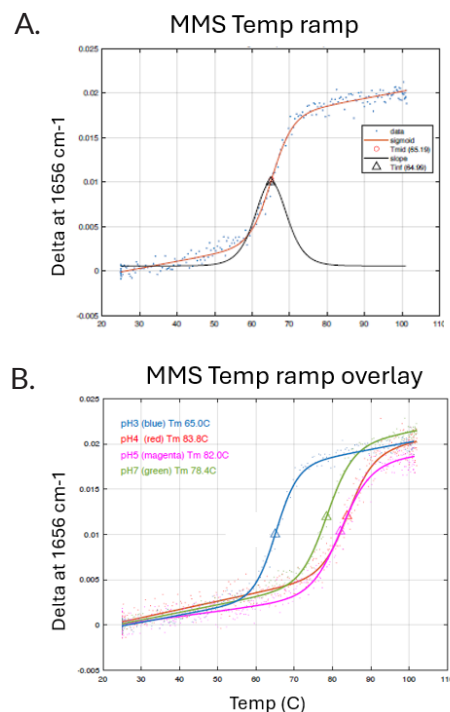


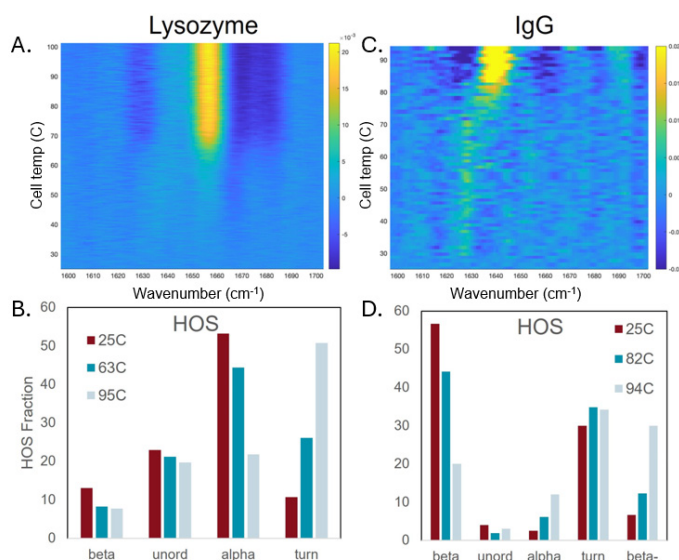
Figure 2 (A). Melt curve for 2 mg/mL lysozyme at pH 3. The first derivative plot indicates the  $T_m$ . (B). Overlay of the melt curves for pH 3, 4, 5, and 7.

Application Note  
AUG 2024

## Results and Discussion, continued

Unlike traditional techniques used for measuring  $T_m$ , MMS provides structural information across the entire melt curve. This is exemplified in Figure 3A for lysozyme (pH 3), where the y-axis is temperature, the x-axis is wavenumber, yellow regions represent loss in structure, and dark blue represents increase in structure. Figure 3B shows the higher order structure (HOS) at 3 temperatures, demonstrating conversion of alpha-helix to turn structure due to the thermal stress.

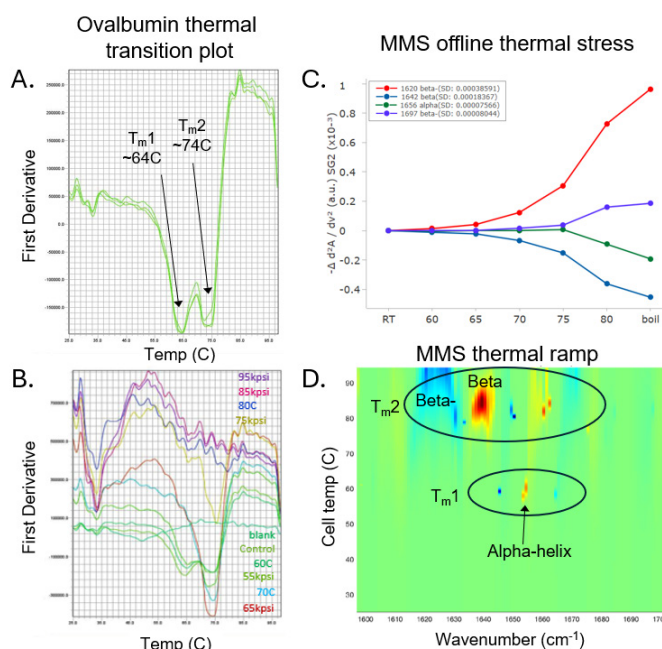
$T_m$  values measured for the 0.5, 1, and 2 mg/mL IgG samples were all approximately 81°C. Shown in Figure 3C is the 2D plot for 0.5 mg/mL and it is clear that the unfolding of IgG occurs at a much higher temperature compared to lysozyme. The major components that we see are native beta-sheet converting to intermolecular beta-sheet (beta-).



**Figure 3** (A). MMS thermal melt plot as an inverted heat map. (B). The higher order structure (HOS) bar graph for lysozyme shows the loss in alpha-helix and increase in turn structure caused by temperature. (C). 2D MMS melt plot for IgG and (D). the structure changes observed for IgG, specifically loss in native beta-sheet and gain in intermolecular beta (beta-):

The next study compares MMS melt data with a more traditional  $T_m$  technique, differential scanning fluorimetry (DSF), using Sypro Orange fluorescent dye in the buffer as a probe. Figure 4A shows the first derivative of the DSF data depicting a melt curve of native ovalbumin with two transition temperatures. By pre-stressing the sample with temperature or pressure, the melt curve could appear very different, but yield the same  $T_m$  (Figure 4B). We tested ovalbumin in MMS to tease out which structural components were affected by thermal stress.

Figure 4C shows the stability plot and how each secondary structure is affected by 5 mins incubation at each temperature and below in Figure 4D is the MMS thermal ramp corroborating the loss in native beta-sheet structure and gain in intermolecular beta-sheet structure. Both  $T_m$  values are visible and now we can see  $T_{m1}$  corresponds to a loss in alpha-helix and  $T_{m2}$  corresponds to a loss in native beta-sheet structure and increase in aggregated beta-sheet structure. This result suggests that ovalbumin is likely to aggregate at its  $T_{m2}$  rather than its  $T_{m1}$ , providing valuable structural information on top of the melting temperatures.



**Figure 4** (A). DSF melt curve for ovalbumin using a Thermo 7500 instrument with Sypro Orange dye to visualize protein unfolding. (B). Pre-stressing the ovalbumin for 5 mins at various temps, or 10 mins using Pressure BioScience's HUB 880 Explorer led to different looking curves, but all had the same  $T_m$ . (C). MMS data can show which secondary structure is affected by the temp applied. (D). MMS thermal ramp shows both  $T_m$  values and loss in structure is shown as yellow/red, gain in structure as blue/dark blue.

## Conclusions

In this study, we used MMS for structural characterization and for thermal melting, correlating structure and stability for various proteins with different types of structures. In the first example, we showed that lysozyme at pH 4 is the most thermally stable of the pH values that were tested, and pH 3 is the least stable. Additionally, comparing lysozyme to IgG, lysozyme has a much lower  $T_m$ .

Application Note  
AUG 2024

## Conclusions, continued

Temperature stress unfolds lysozyme by converting alpha-helical structure to turn structure, whereas the same temperature stress causes IgG native beta-sheet to form intermolecular beta-sheets. In the last example, pre-stressed ovalbumin melt curves using traditional methods result in the same  $T_m$  but appear very different, while MMS thermal ramp data can distinguish both  $T_m$  values and correlate the type of secondary structures to each  $T_m$ . For ovalbumin, the alpha-helix structures melt at the first  $T_m$  and the native beta-sheet structures melt at the second  $T_m$  and convert to aggregated beta-sheet. Overall, this data demonstrates MMS adds a high level of structural granularity to melt experiments that was not previously accessible to formulation scientists, providing valuable insight into how various formulation components stabilize different structural motifs in biologic drugs.

## Contributors

Valerie Collins, Ph.D.  
Eugene Ma, Ph.D.

RedShiftBio,  
80 Central St.  
Boxborough, MA 01719

Vera Gross, Ph.D.  
Alexander Lazarev, Ph.D.

Pressure Biosciences Inc.  
14 Norfolk Ave  
South Easton, MA 02375

## References

1. Huynh, Kathy, and Carrie L. Partch. "Analysis of protein stability and ligand interactions by thermal shift assay." *Current protocols in protein science* 79.1 (2015): 28-9.
2. Kendrick, Brent S., et al. "Determining spectroscopic quantitation limits for misfolded structures." *Journal of pharmaceutical sciences* 109.1 (2020): 933-936.
3. Venkataramani, Sathyadevi, et al. "Thermal stability of high concentration lysozyme across varying pH: A Fourier Transform Infrared study." *Journal of pharmacy & bioallied sciences* 5.2 (2013): 148.