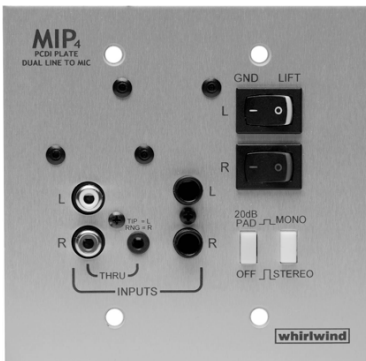


MIP4

MIP4B (Black) MIP4S (Clear)



WHIRLWIND MEDIA INPUT PLATE MIP4

The Whirlwind **MIP4** Media Input Plate is a 2-gang wall mount version of the popular Whirlwind pcdI for permanent installation in conference rooms, banquet halls, houses of worship, etc. It reduces unbalanced line level signals by 20 dB and balances them for connection to a sound system's microphone inputs.

Inputs are via dual RCA, dual ¼" tip-sleeve or single stereo 3.5 mm jacks. The RCA and 3.5 mm jacks are wired in parallel if a through connection is required.

Outputs are on the rear via 3.5 mm screw type removable plugs (Phoenix 1984329 or equivalent).

The MIP4 also features buttons for mono/stereo input combine and a pad for adding an additional 20 dB of attenuation. Ground lift switches are provided for each channel.

The plate is brushed aluminum and available in either a black (MIP4B) or clear (MIP4S) anodized finish.

MIP4 OPERATION

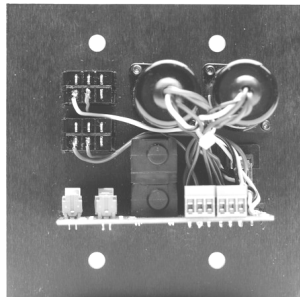
Signal is input via 3.5mm (1/8") stereo TRS, color-coded RCA phono type or independent left and right 1/4" jacks. The 3.5mm and RCA jacks are wired as "loop through" connections. The tip is connected to the + side of the white RCA (Left), the ring is wired to the + side of the red RCA (Right) and the sleeve is common ground to both jacks. Use only one type as an input at a time. The 1/4" inputs disconnect the other input jacks to provide complete left and right ground isolation.

The 20dB PAD switch adds 20dB of attenuation to both the left and right inputs, to reduce the possibility of distortion with very "hot" signals.

The STEREO/MONO switch sums the left and right input jacks into a mono signal that is fed to both outputs in the "MONO" position.

The GND/LIFT switches disconnect the ground between the input and the corresponding output. If hum occurs in either channel when using the MIP4, setting the switch to the "LIFT" position may help to reduce it.

REAR VIEW



This product is warranted to be free of defects in materials or workmanship to the original purchaser for a period of 3 years from the date of purchase. Should warranty service be required, return the unit postage paid along with the original sales receipt to:

whirlwind

99 Ling Road Rochester, NY 14612
Ph. 800 733-9473 · Fax 585 865-8930
sales@whirlwindusa.com
www.whirlwindusa.com
Made In USA