

## Seal MadX 8.0s SD

8000lb / 3630Kg Self Recovery Winch

	12V
Part No.	296088



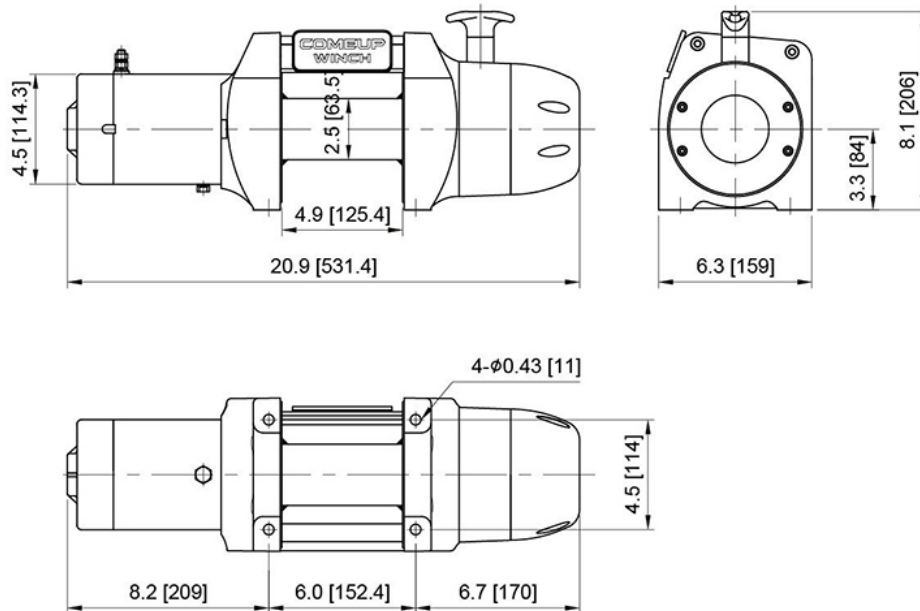
### Features include

- Low profile and compact with a narrow drum.
- Lightweight with Dyneema SK-75 synthetic rope
- 8000lb of pulling power and fast line retrieval
- 5250W / 7.0HP 12V series wound motor delivers superior torque
- All motor and gearbox housing joints are silicone sealed to reduce water and dust ingress
- Submersible sealed contactor
- Stainless steel free spool clutch T-handle can be rotated to suit various installations.
- Water resistant remote control with LED indicator to monitor motor temperature.
- Mechanical cone brake positioned away from the drum to hold the full specified load without slipping.

### Specifications

- Rated line pull: 3630 kg (8000 lb) single line
- Line speed (1st layer): 13.7 m/min @ 55A (12V, no load)  
2.1 m/min @ 350A (12V, full load)
- Motor: 5250W / 7.0hp 12V series wound
- Gear ratio: 67:1, 3 Stage Planetary
- Clutch (free-spool): Lift and turn SS T-bar handle
- Brake: Automatic cone brake holds full load
- Winch construction: Aluminum die-cast housings with steel drum
- Drum size: 63.5 mm x 125 mm
- Control: Waterproof remote with thermometric LED indicator, 5m cord
- Rope: Synthetic Dyneema SK-75
- Rope size: 10 mm x 15.2 m
- Mounting bolt pattern: 152 mm x 114 mm

## Dimensions inch / mm



## Accessories

- Synthetic rope 10 mm x 15.2 m w/clevis hook
- Remote control 5m cord
- Alloy Hawse fairlead
- Detachable control box
- 1.8 m 2/0 gauge battery lead

## Warning!

- Do not use winch to transport, lift or otherwise move personnel.
- The rated line pull shown is based on the first layer of wire rope on the drum.
- The wire rope must remain on the drum at all time with at least 10 wraps.

## Warranty

Limited lifetime warranty for mechanical components and one (1) year warranty for electrical components from date of purchase. Wire/Synthetic ropes are not included under warranty.