

Jackson-Bell Model 4 Notes

I believe this may be the first Commercial Jackson-Bell radio. In many Advertisements, Herbert Bell, referred to his company as, 'All Electric, since 1926'. So, I would assume this is what he considered his first set.

This radio is very crudely built. One would think it was the only one built. However the Serial Number on the tag, says 1361. Assuming numbering began at 1000, many were made? However, because the performance must have been substandard, and the look, ugly; it is not surprising few exist today!

The Electrolytic Rectifier would have been a very unpleasant feature of this radio. The toxic gases that are released must not have been well received by the user. The electrodes would require replacement often. Requiring the handling of concentrated Caustic Soda (Sodium Hydroxide). It is worthy of note that for the next 3 years, after this set, Jackson-Bell used packaged power supplies, from others!

The claim of 'All Electric' may not have included the fact that there probably was a 'C' battery, since the battery life would be several years.

The sensitivity, and selectivity is probably very poor. So if the user lived near one radio station, I assumed that is the only station they could get. If they lived several miles from any station, they probably got nothing!

Observations:

Very compact, space is well filled in three dimensions

Simple appearance

Nice Label

Very Crude construction

Poor fasteners

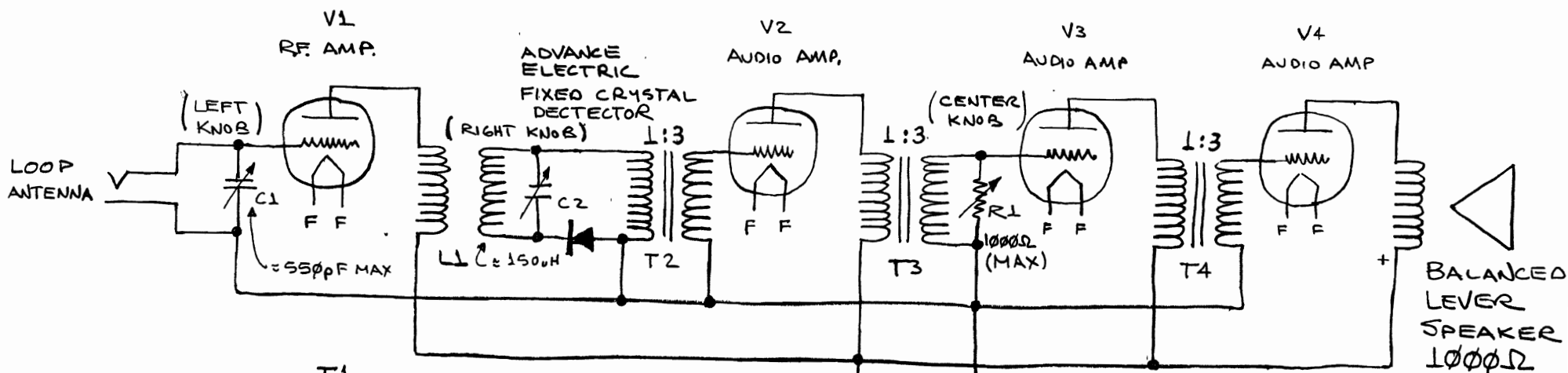
Sloppy work

Cheaply made

Power Transformer looks custom built

Loop antenna is missing

Unit could not be tested, bad transformers, etc.



ALL TUBES
ARE VX20LA'S

JACKSON-BELL
MODEL 4
SKETCH 21 JAN '96
R.A. GRAY

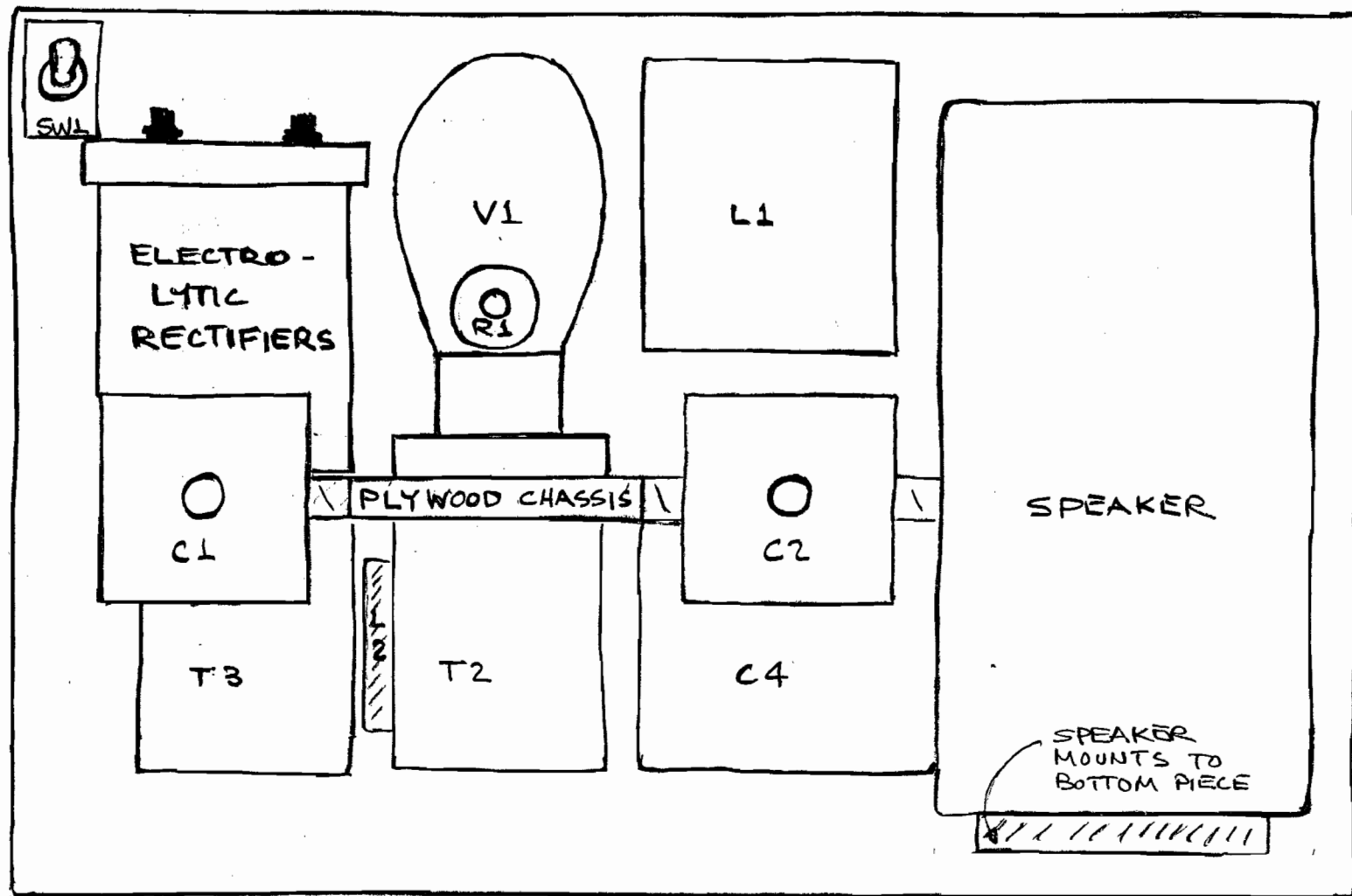
"C" BATTERY
THIS COULD HAVE
BEEN A FIXED
RESISTOR &
A BYPASS
CAPACITOR
HOWEVER, NONE
WAS FOUND!

ELECTROLYTIC RECTIFIER
DETAILS
K IS A LEAD SCREW
A IS AN ALUMINUM SLUG

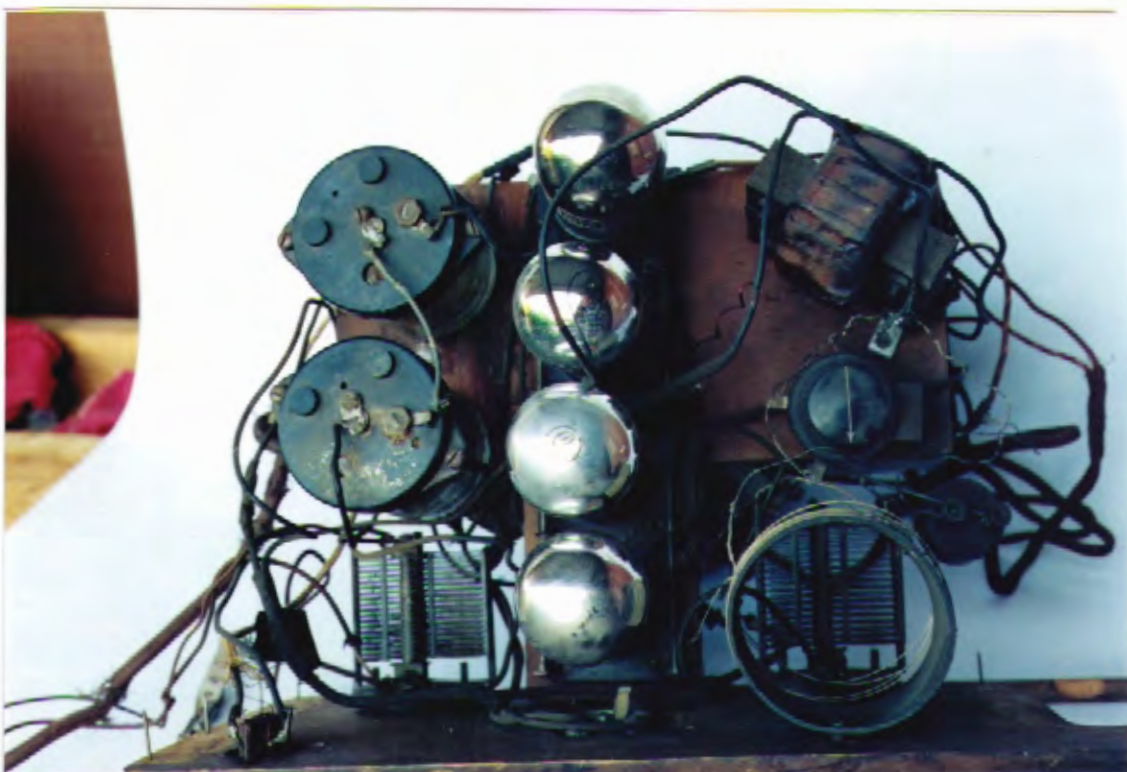
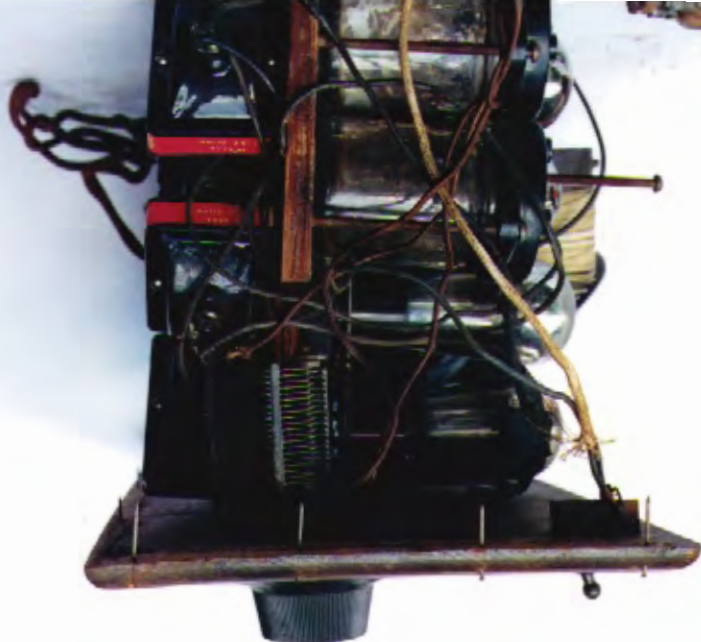




JACKSON-BELL MODEL 4 (FALSE CUTAWAY FRONT VIEW) (NOT TO SCALE)

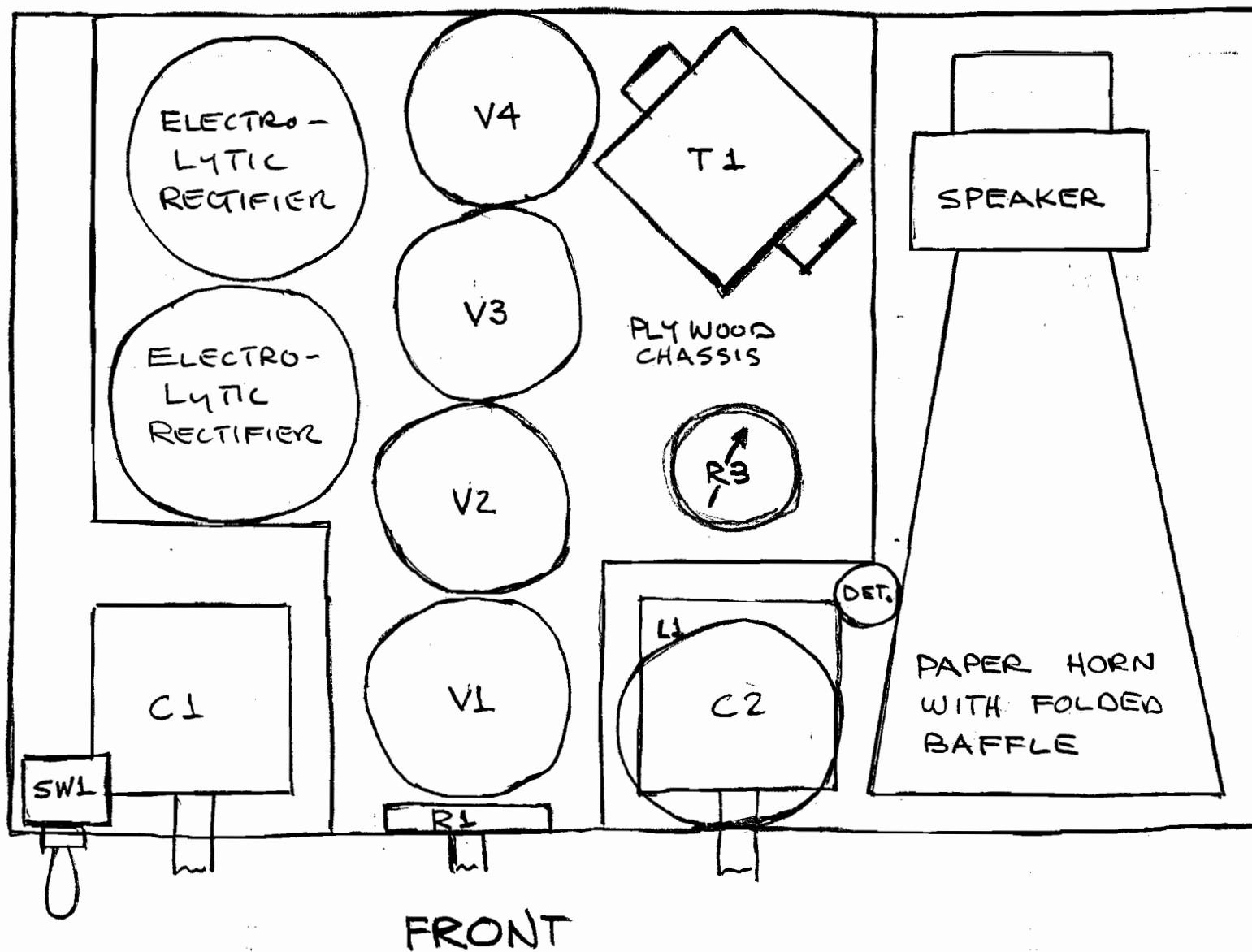


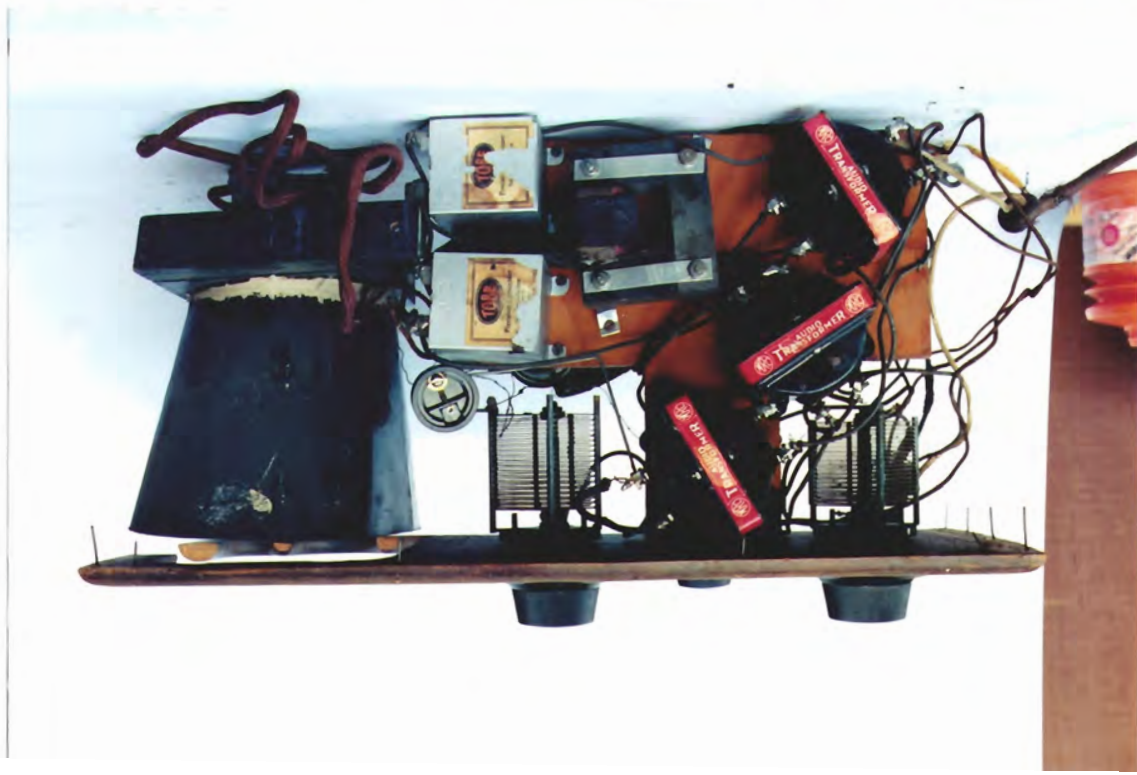
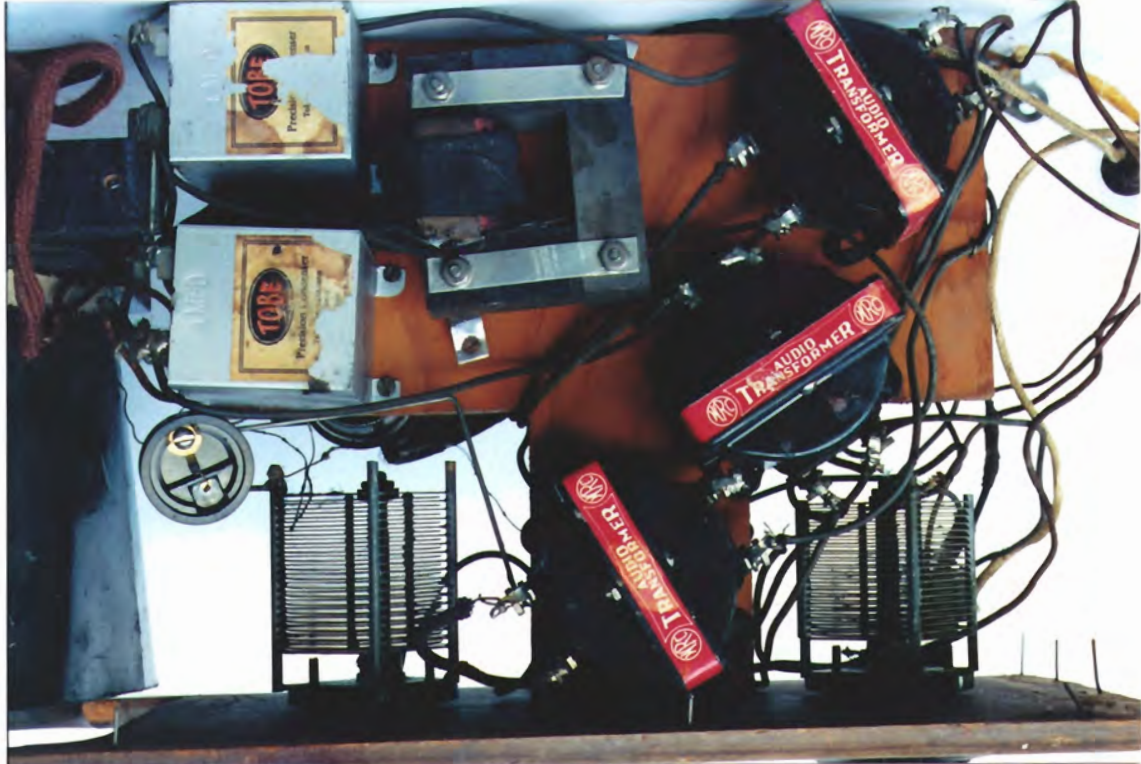
THIS VIEW CANNOT BE SEEN SINCE THE FRONT PANEL & PLYWOOD CHASSIS ARE PERMANENTLY JOINED TO FORM AN ASSEMBLY. THIS VIEW DOES ILLUSTRATE THE PARTS PLACEMENT.



JACKSON-BELL Model 4 (Top View)

(NOT TO SCALE)





JACKSON-BELL MODEL 4 (BOTTOM VIEW)
(NOT TO SCALE)

