

The following values of voltage should be read with the set connected to a 110 volt line and the volume control set at maximum:

Tube	Ef.	Eg.	Ep	Ip.
226 R.F.	1.35	12	135	5
227 Detector	2.3	0	48	3
226 A.F.	1.35	12	130	3
171 A.F.	5	23	125	15
280 Rectifier	2	-	200 volts A.C. per plate	
280 Filament to ground	-	-	175 volts	
Drop across choke	-	-	40 volts	

The following approximate values of resistance should be noted when making continuity tests:

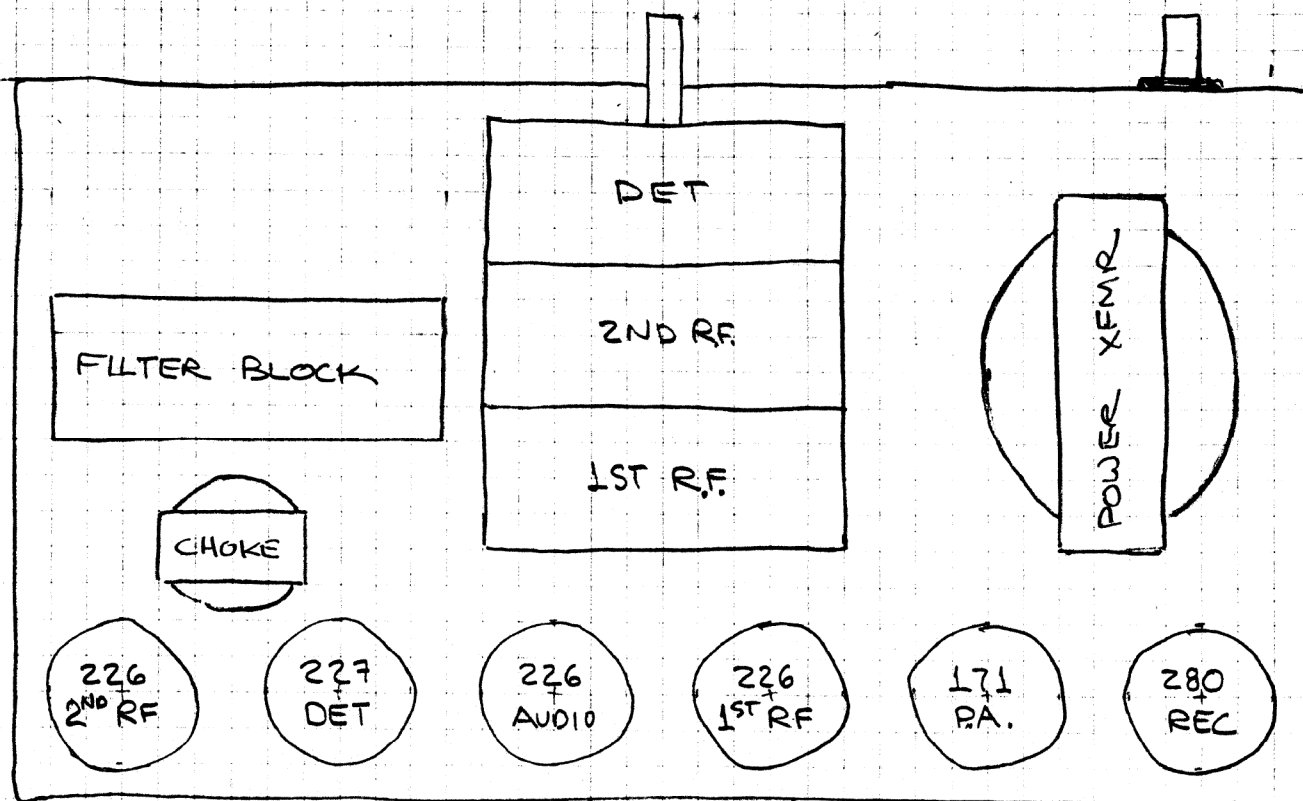
With volume control at maximum:

226 Filament to ground,	1500 ohms
171 Filament to ground,	1500 ohms
Detector Heater to ground,	0
Detector cathode to ground,	0
280 Filament to R.F. Plate	600 "
280 Filament to Detector Plate	30000 "
280 Filament to 171 Plate	1600 "
First R.F. Grid to ground	2 "
Second R.F. Grid to ground,	300 to 800 ohms
Detector grid to ground	2 meg ohms
First A.F. Grid to ground	5000 ohms
Second A.F. Grid to ground	5000 "
First audio Plate to 280 Filament,	1600 "

Leakage current in electrolytic filter condenser should not exceed two milliamperes per unit. This set will operate satisfactorily on A.C. lines of from 50 to 60 cycles, 105 to 120 volts A.C.

JACKSON-BELL CO., LTD.

OFFICIAL RADIO SERVICE MANUAL
Supplement No. 2



JACKSON-BELL "S" (CREST)

LAYOUT SKETCH

RA4 APRIL '93