

## Flint Model 84 Peter Pan



Front View

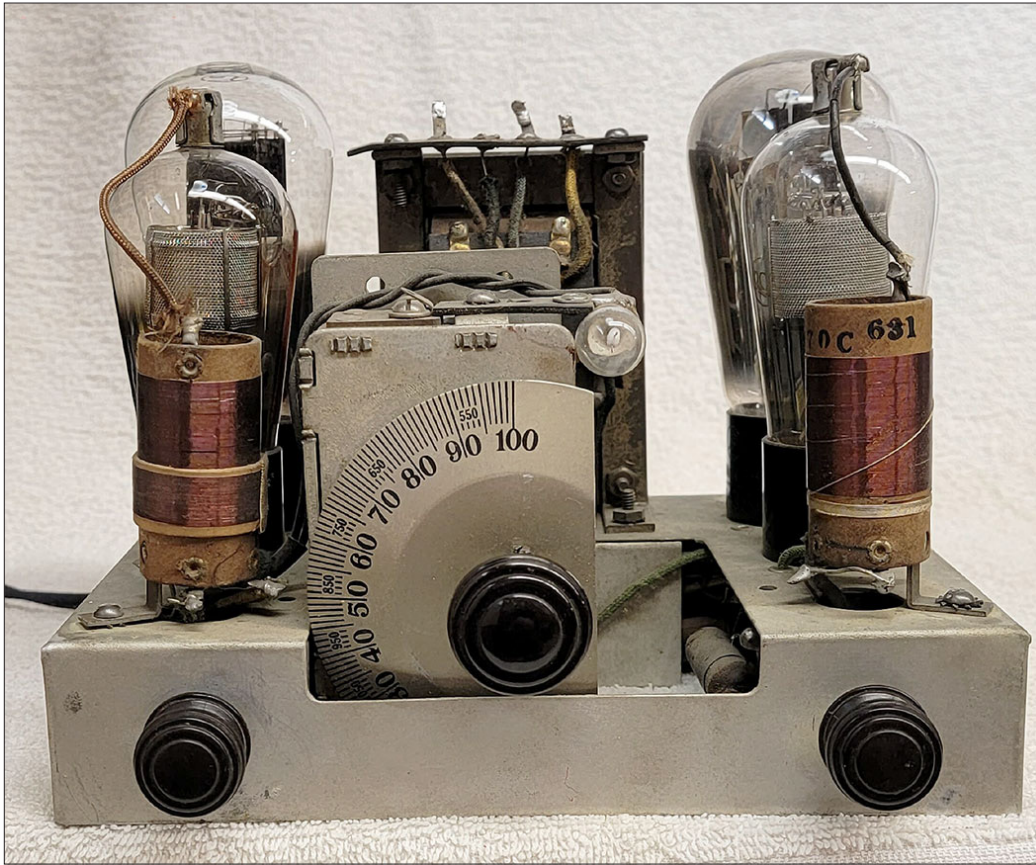


Rear View

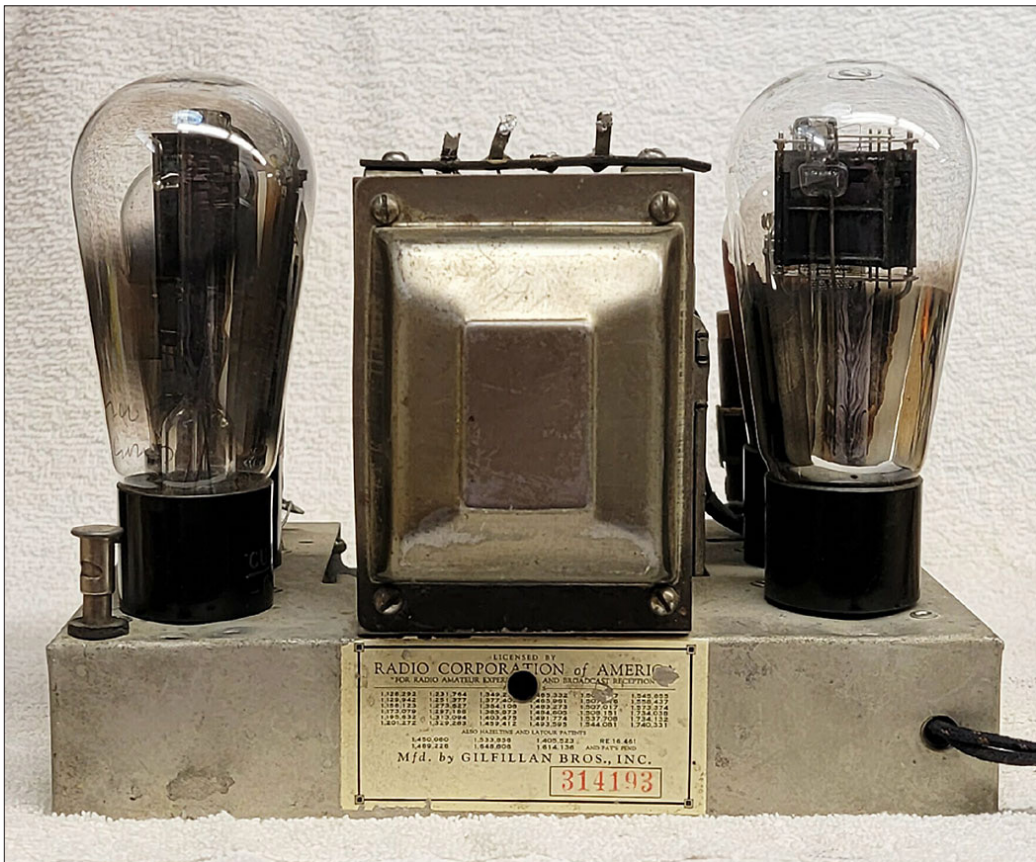


Cabinet Bottom View



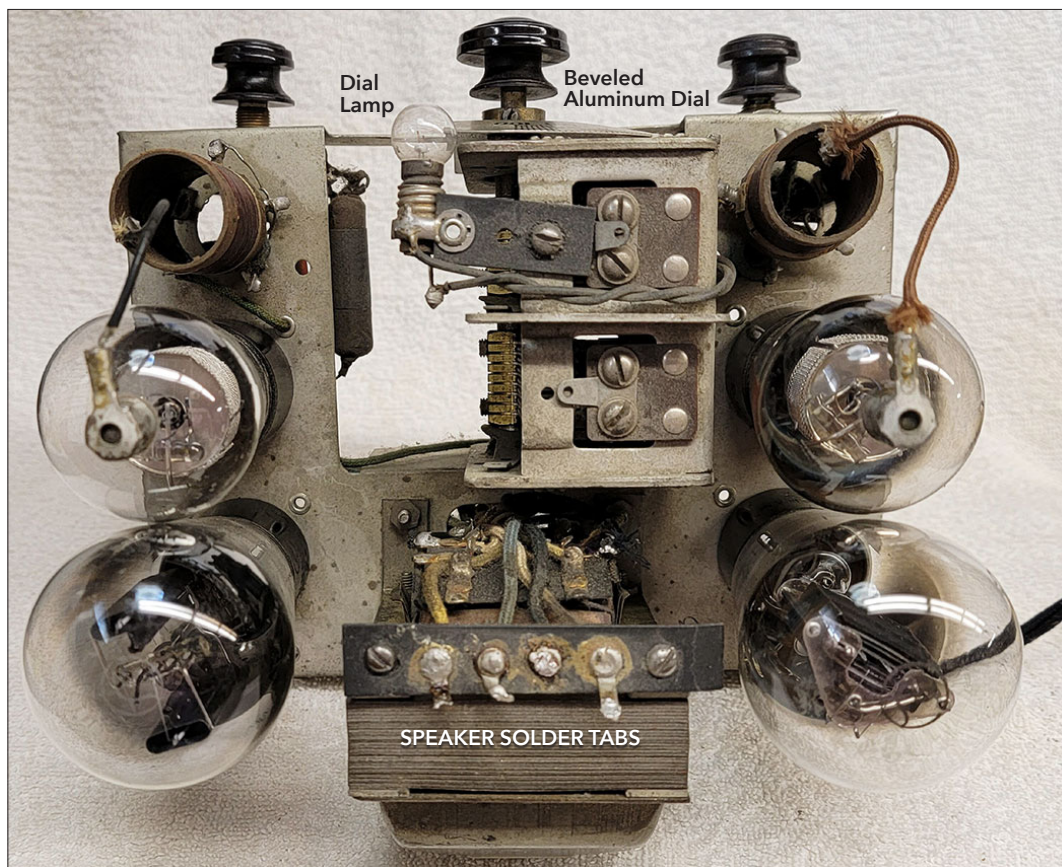


Chassis Front View

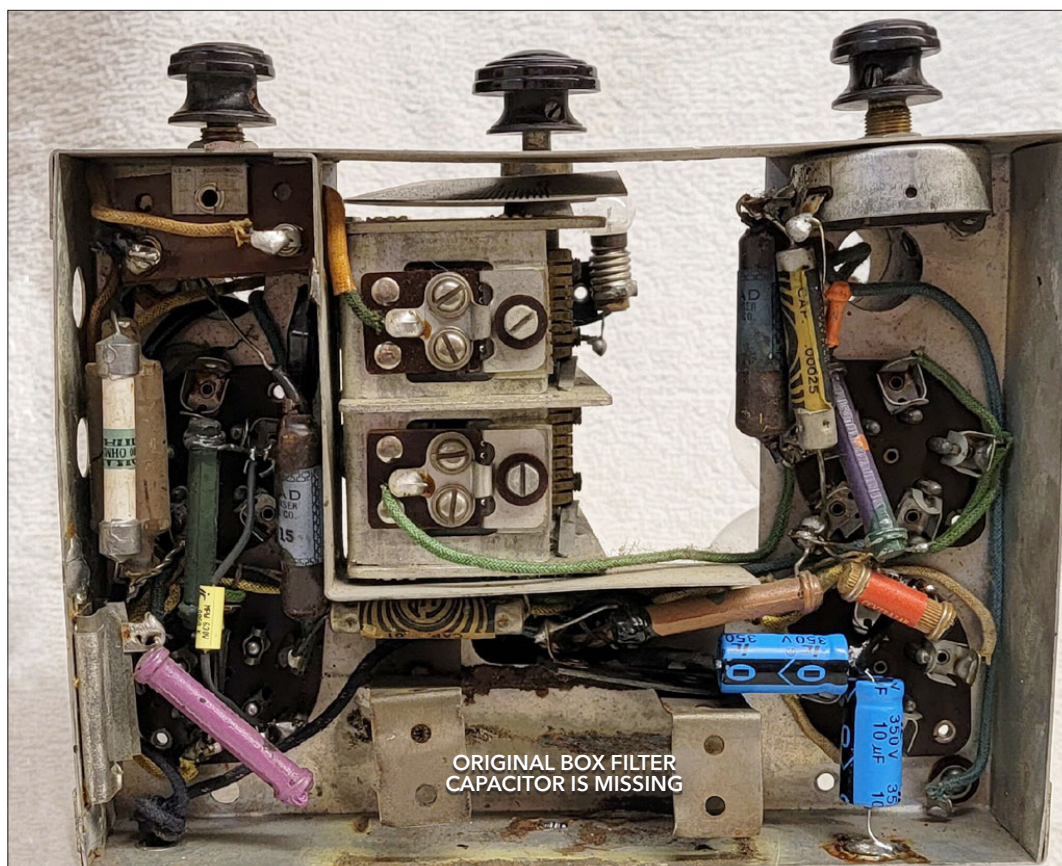


Chassis Rear View



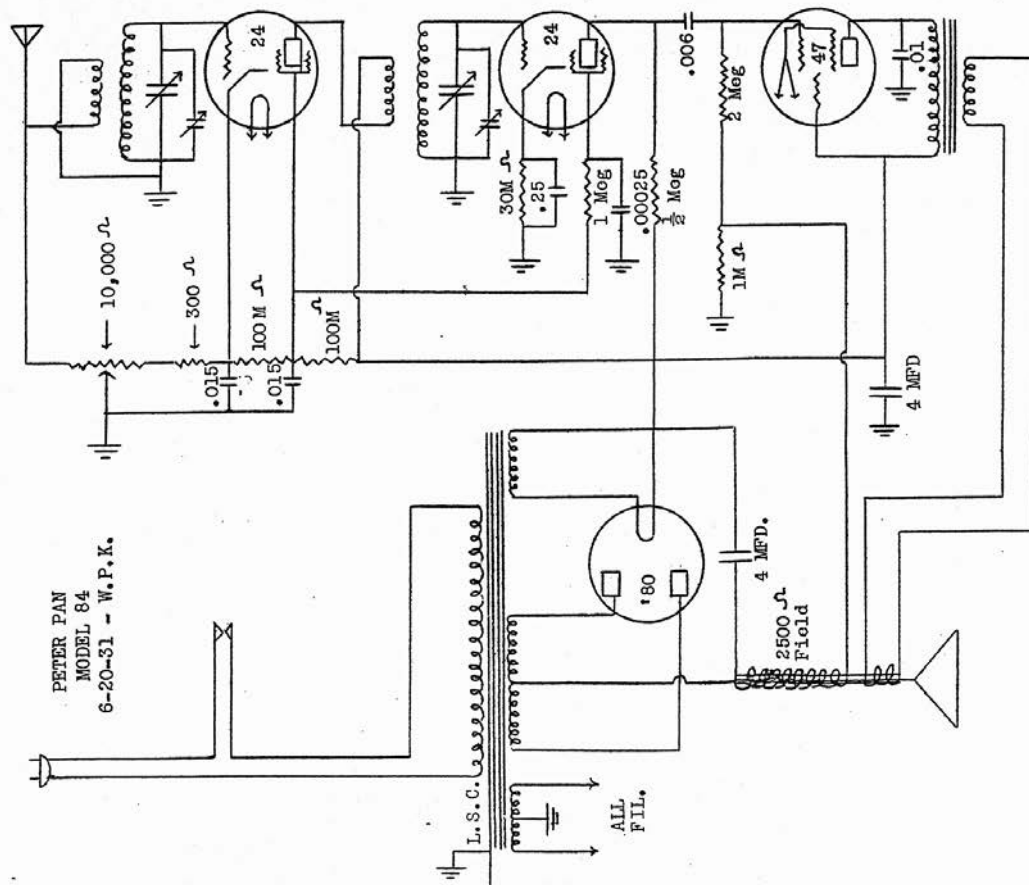


Chassis Top View



Chassis Bottom View

## Jackson-Bell Early Model 84 Schematic, same as Flint Peter Pan



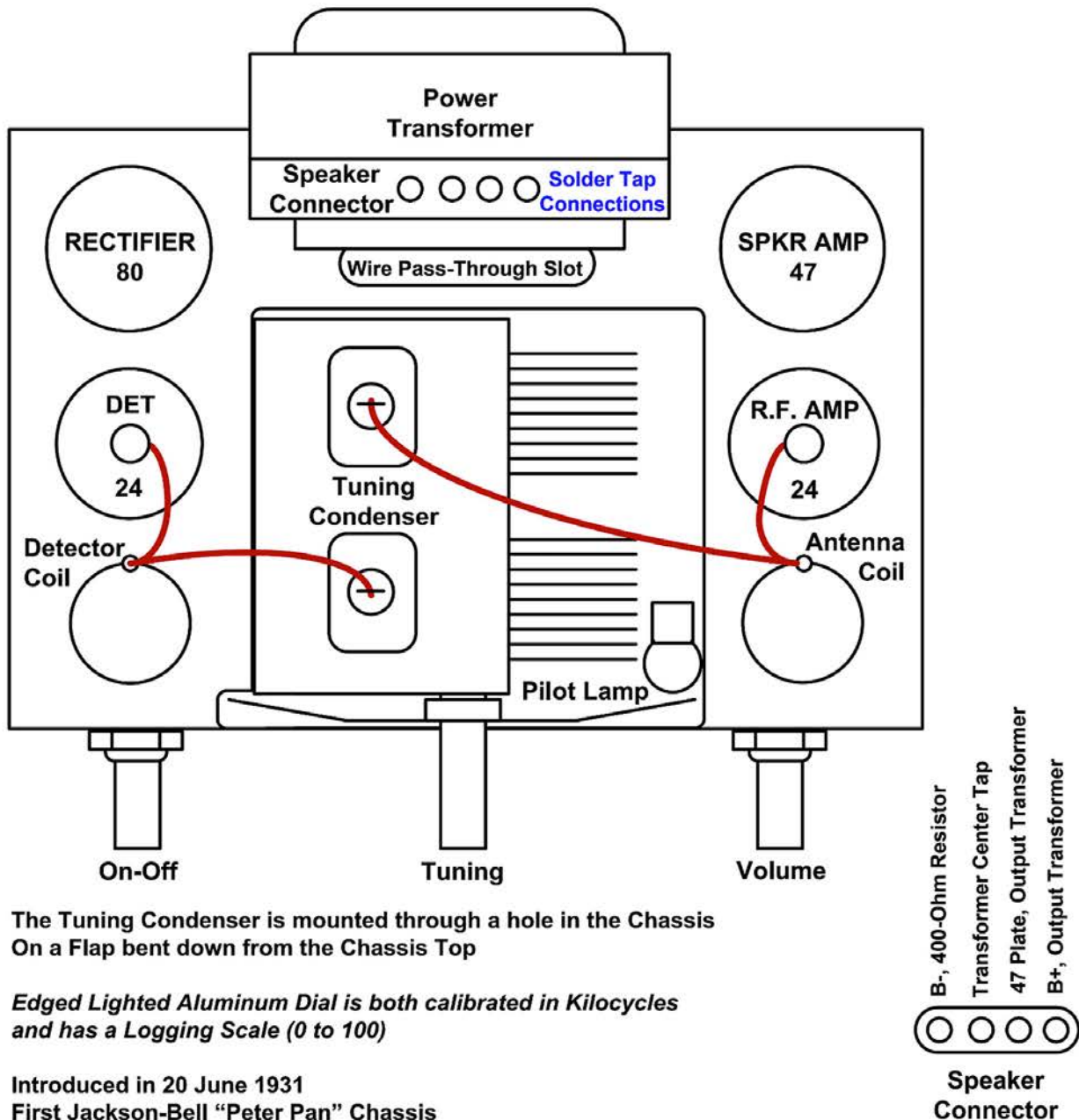
See the Jackson-Bell Model 84 for Alignment Procedures

EARLY VERSION



**JB-84 Chassis Notes**

15DEC2022RAG



The Tuning Condenser is mounted through a hole in the Chassis  
 On a Flap bent down from the Chassis Top

*Edged Lighted Aluminum Dial is both calibrated in Kilocycles  
 and has a Logging Scale (0 to 100)*

Introduced in 20 June 1931  
 First Jackson-Bell "Peter Pan" Chassis

Same Chassis in Jackson-Bell Peter Pan Cabinet with "Eyebrow" & Escutcheon  
 introduced February 1932

The Flint "Peter Pan" (Kewpie Grille), with a **Solder Tab Connector Strip** for the Speaker  
 We have a Flint Peter Pan Ad, JUNE 1931 in "Western Music & Radio Trade Journal"  
 With a Photo, indicates May (April) Prototype (Production) from Flint

This Chassis also appears in a Domed "Peter Pan" Cabinet, with a Flint "Kewpie" Grille and Metal  
 Escutcheon with a Backlighted Translucent Dial  
Stamped in Metal 1132... November 1932... obviously blowing out old parts inventory!

We have seen some later Versions of this Chassis with a  
 Tone Control Pot.. All assumed to be added aftermarket.