

A vintage wooden clock with a semi-circular top. The clock face is a large, dark, arched opening containing a black silhouette of a person in a dynamic pose, holding a hammer or mallet. The background of the clock face is a light-colored, textured material with a repeating diamond pattern. Below the clock face, there are four small, round, dark knobs or buttons arranged in a row. The clock is made of dark wood and has a decorative base with a row of small, square, raised elements.

PETER PAN
MODEL 84
G-20-31-W. P.K.

RESISTOR CODE
300 OHM WIRE WOUND
400 - - - 3 WATT
300000 - ORANGE BLACK ENV. ORANGE DOT
1000000 - BROWN - - - YELLOW
1/2 MEG GREEN - - - YELLOW
2 - RED - - - GREEN

6X4
6X5
6X6

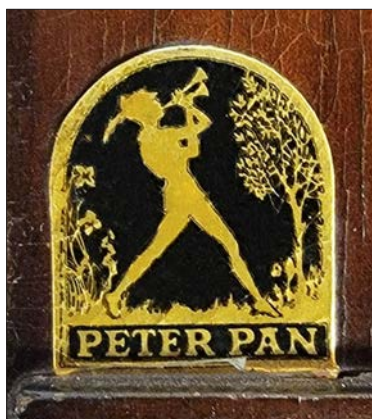
10,000 Ω
300 Ω
100 M Ω
200 M Ω
30 M Ω
1/2 Meg
.006
2500 Ω Field
4 MFD
400 Ω
4 MFD
8 31

ALIGNMENT
ADJUSTMENT
HOLES

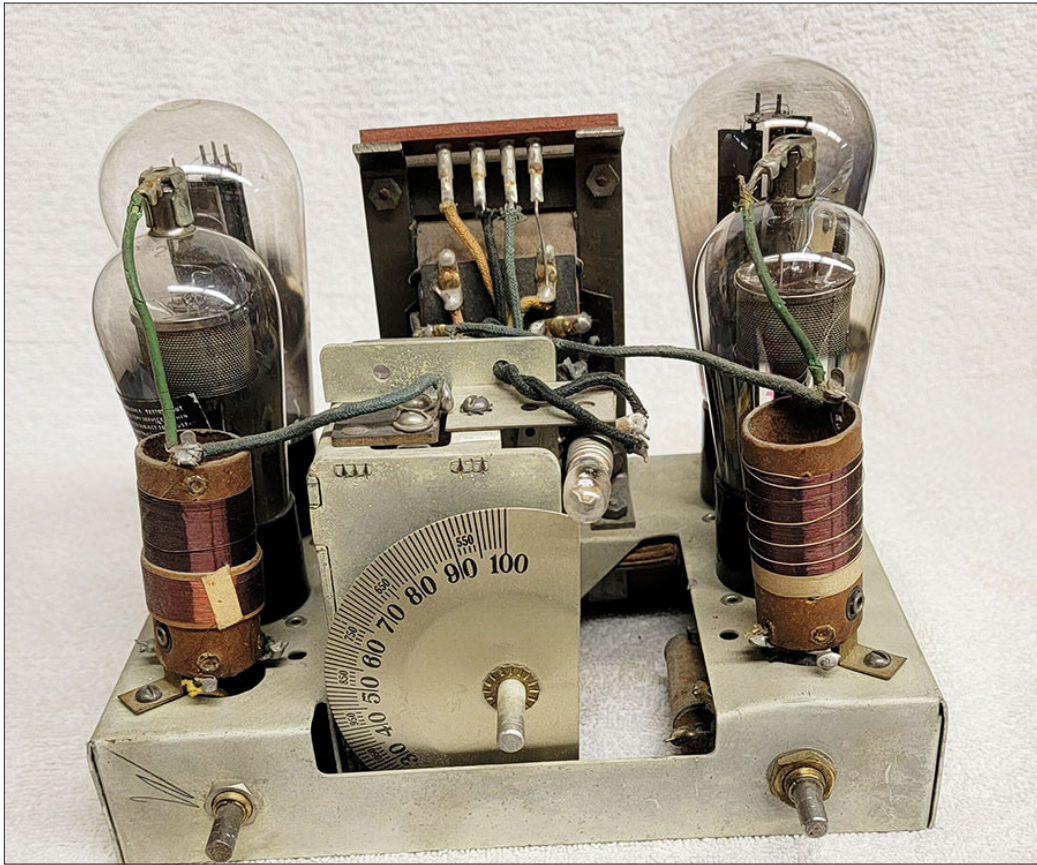
ALIGNMENT ADJUSTMENT HOLES



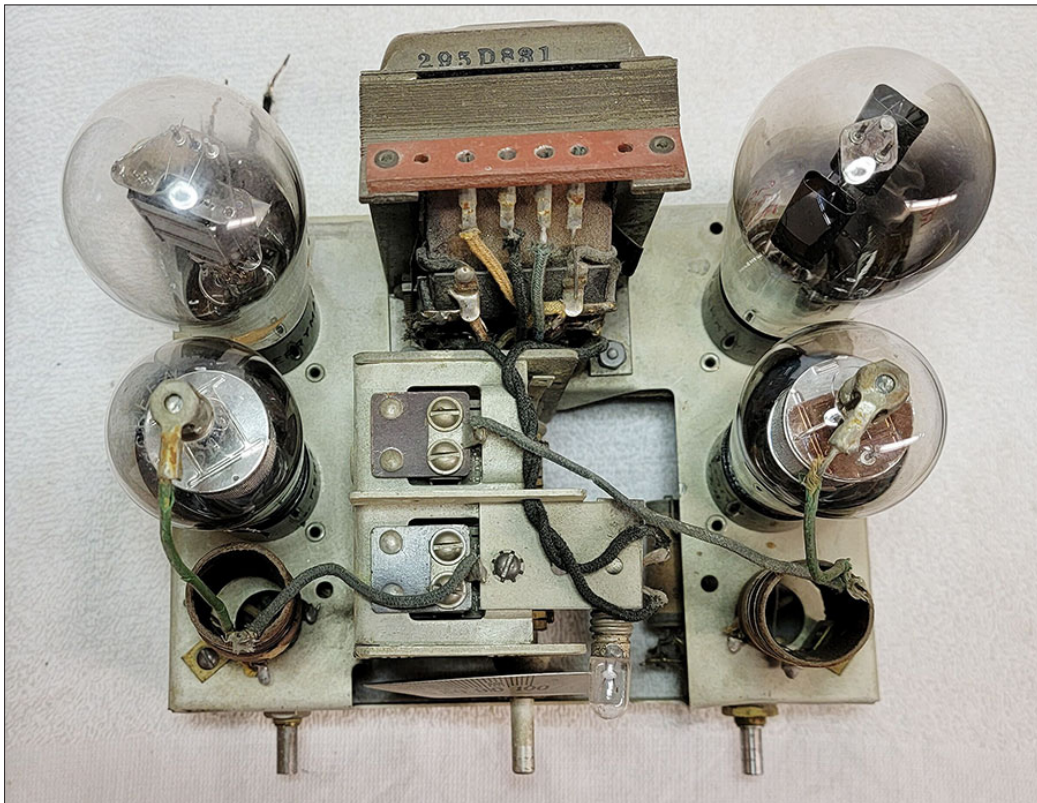
Cabinet Side View



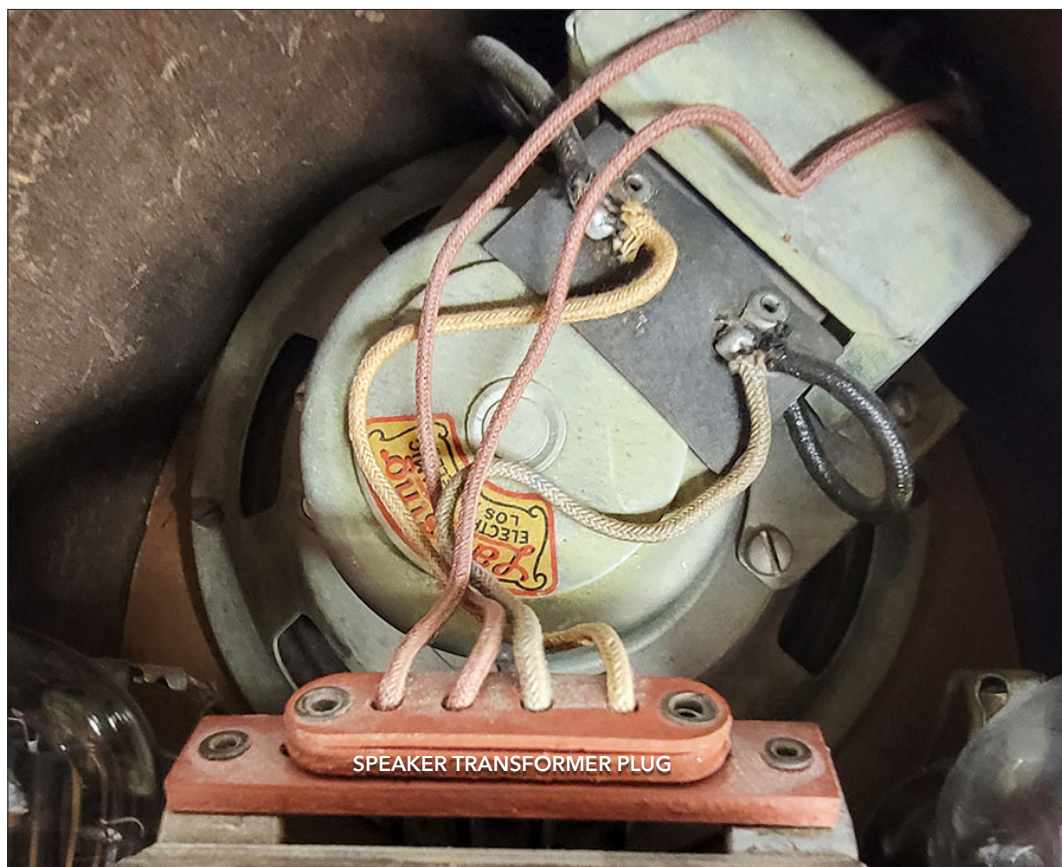
Peter Pan Logo Sticker



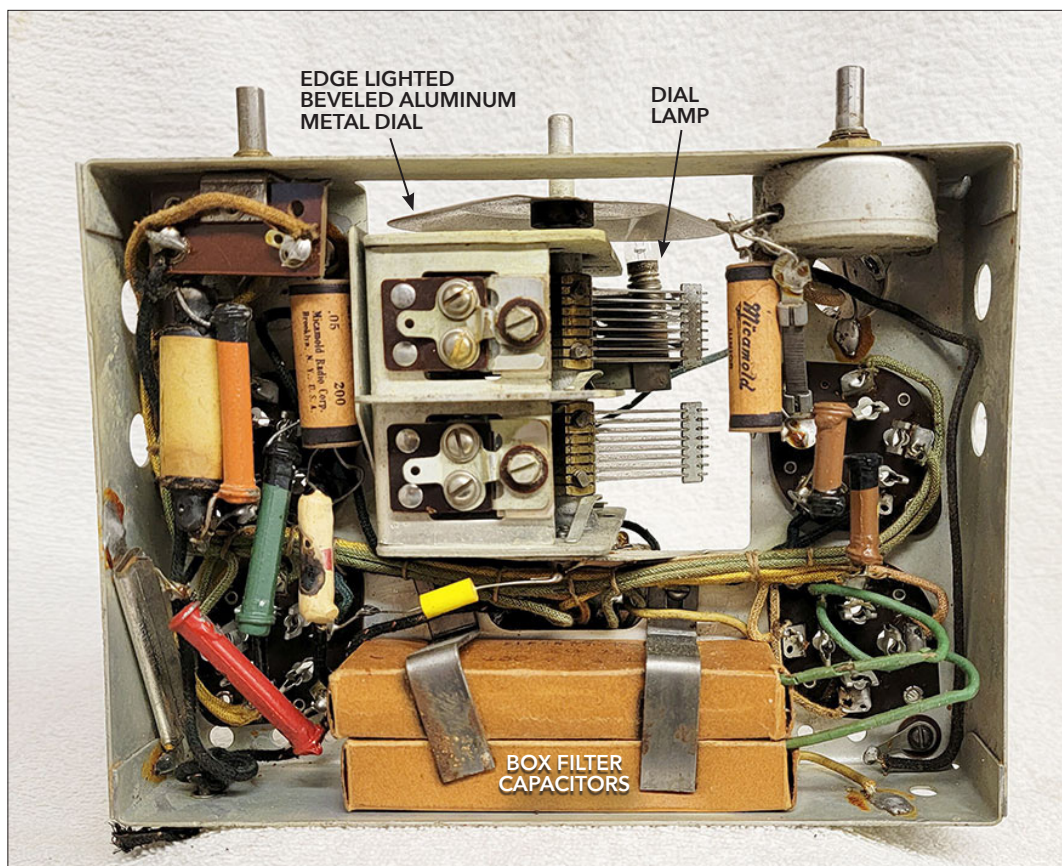
Chassis Front View



Chassis Top View

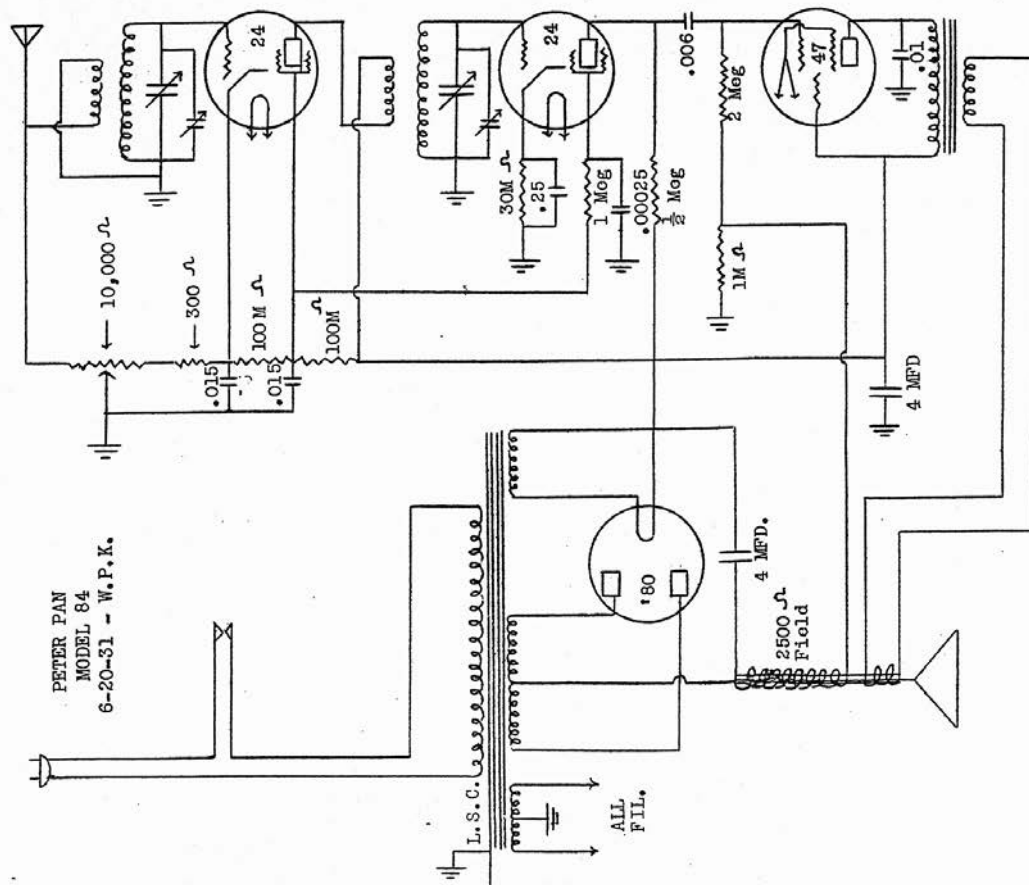


Chassis Top View



Chassis Bottom View

Jackson-Bell Early Model 84 Schematic, same as Flint Peter Pan

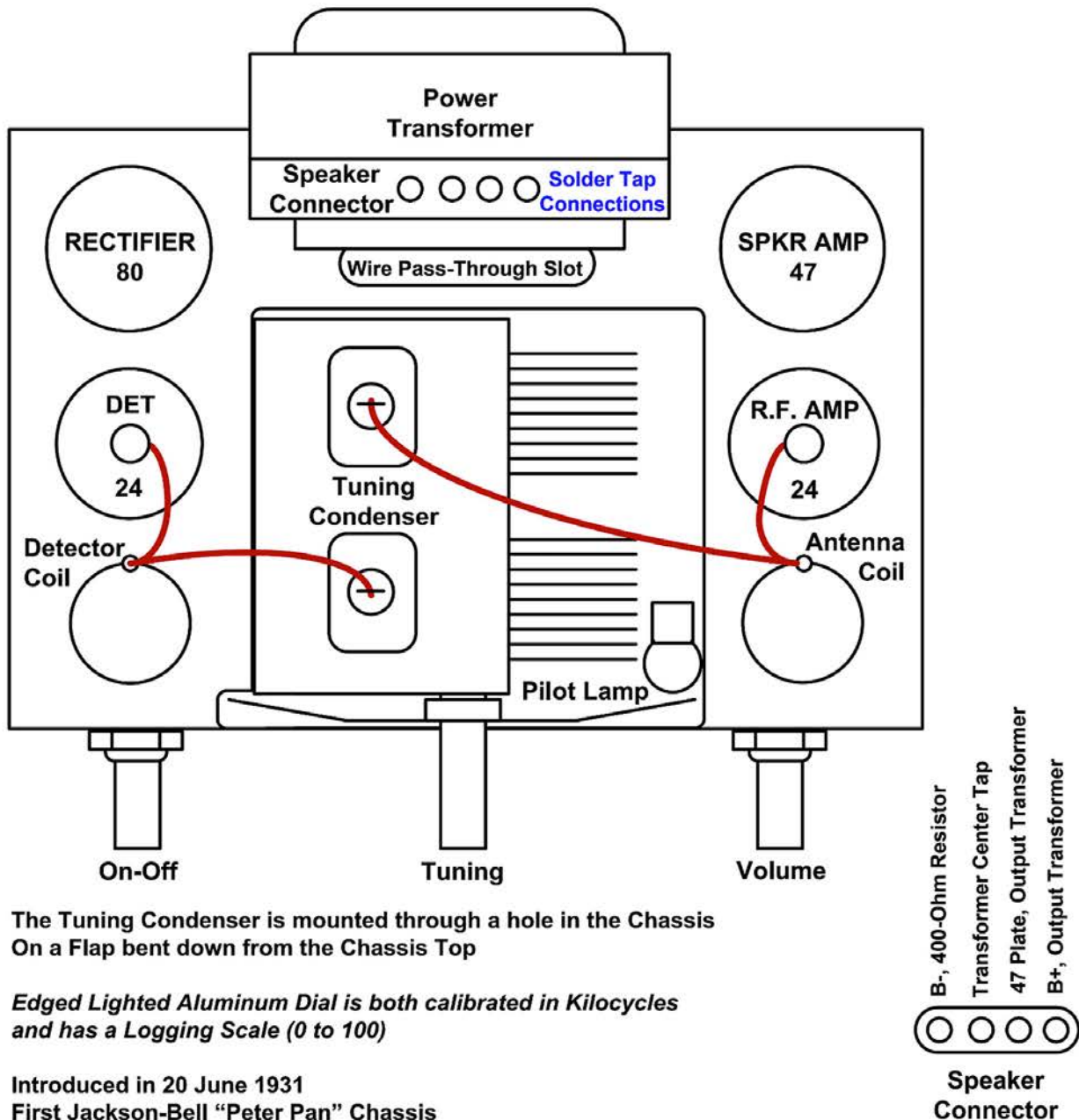


See the Jackson-Bell Model 84 for Alignment Procedures

EARLY VERSION

JB-84 Chassis Notes

15DEC2022RAG



The Tuning Condenser is mounted through a hole in the Chassis
On a Flap bent down from the Chassis Top

*Edged Lighted Aluminum Dial is both calibrated in Kilocycles
and has a Logging Scale (0 to 100)*

Introduced in 20 June 1931
First Jackson-Bell "Peter Pan" Chassis

Same Chassis in Jackson-Bell Peter Pan Cabinet with "Eyebrow" & Escutcheon
introduced February 1932

The Flint "Peter Pan" (Kewpie Grille), with a **Solder Tab Connector Strip** for the Speaker
We have a Flint Peter Pan Ad, JUNE 1931 in "Western Music & Radio Trade Journal"
With a Photo, indicates May (April) Prototype (Production) from Flint

**This Chassis also appears in a Domed "Peter Pan" Cabinet, with a Flint "Kewpie" Grille and Metal
Escutcheon with a Backlighted Translucent Dial
Stamped in Metal 1132... November 1932... obviously blowing out old parts inventory!**

**We have seen some later Versions of this Chassis with a
Tone Control Pot.. All assumed to be added aftermarket.**