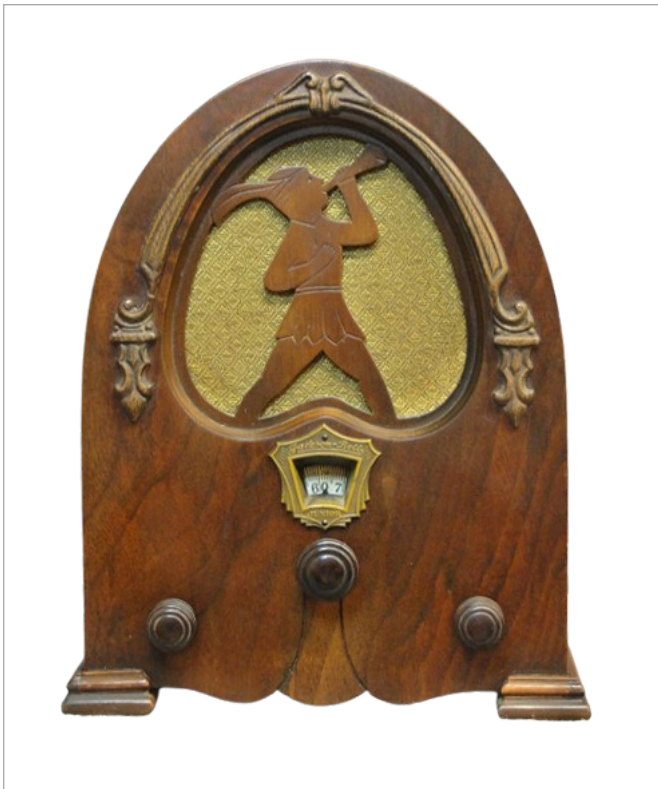


## Jackson-Bell Model 84 Peter Pan - With Eyebrow



Jackson-Bell Model 84 Willard Front View



Jackson-Bell Model 84 Willard Rear View

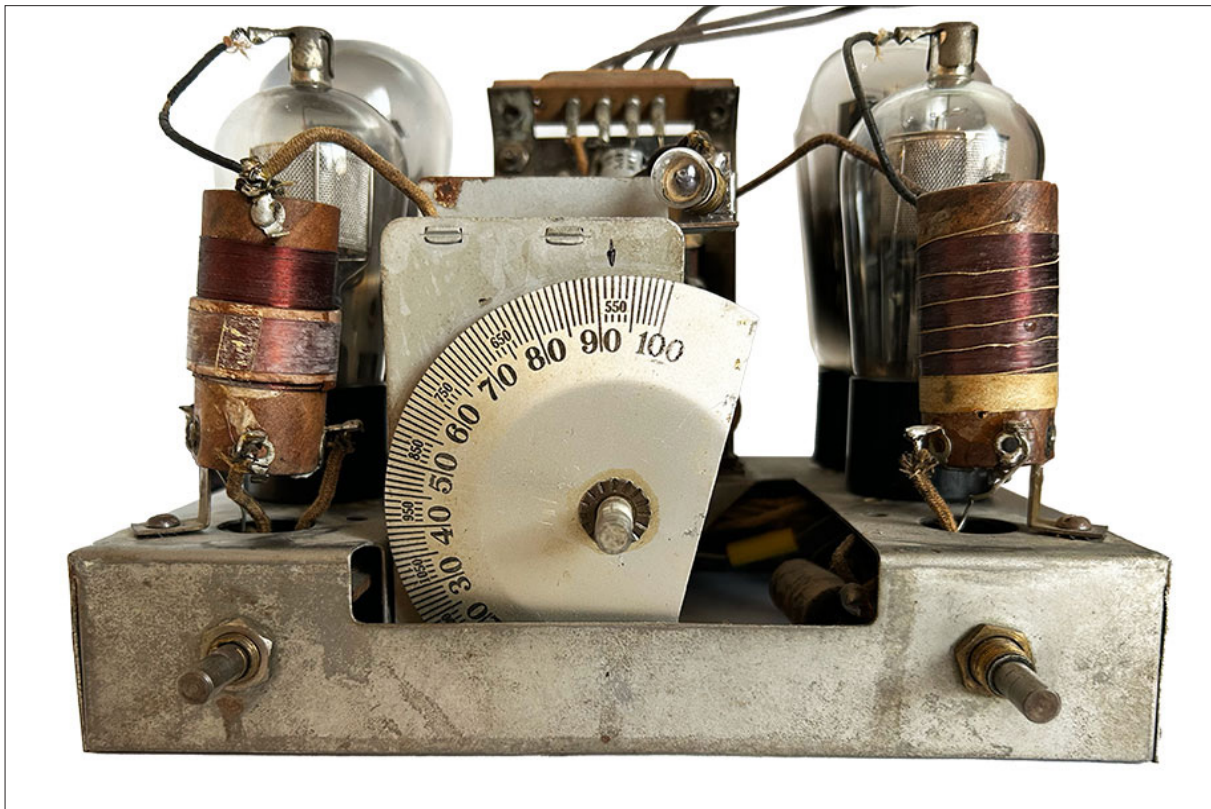


Jackson-Bell Model 84 Eyebrow Peter Pan Cabinet Bottom View



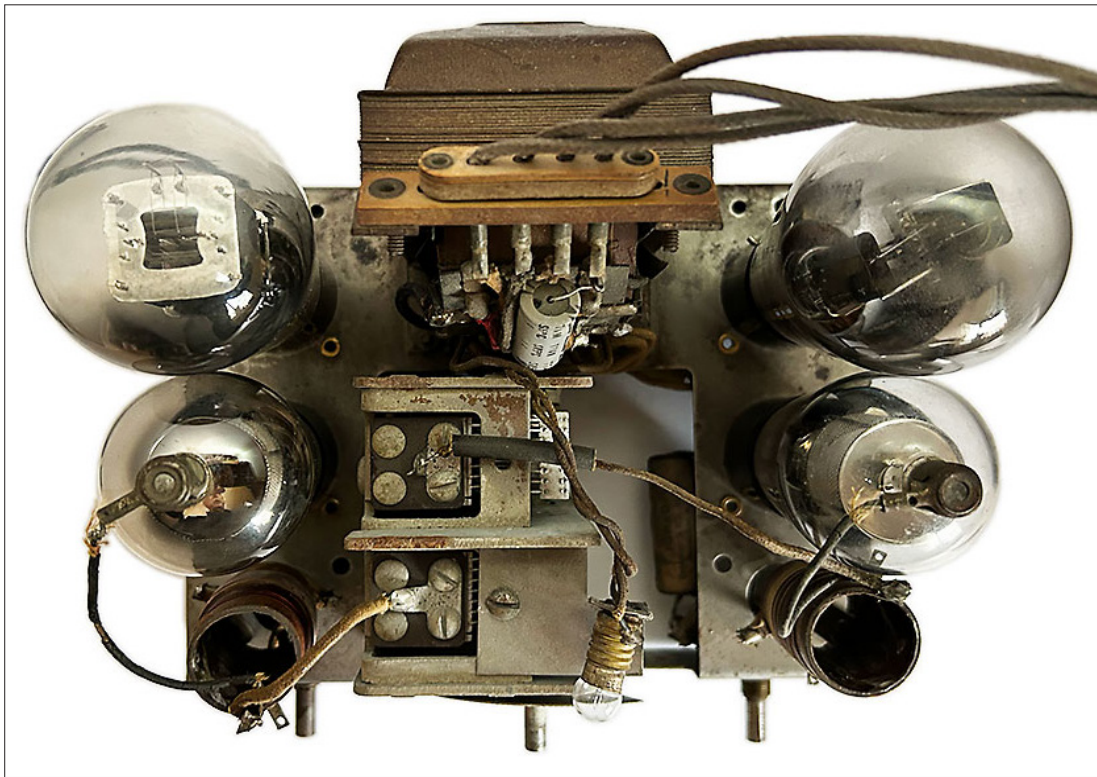


Jackson-Bell Model 84 Eyebrow Peter Pan Speaker Plug

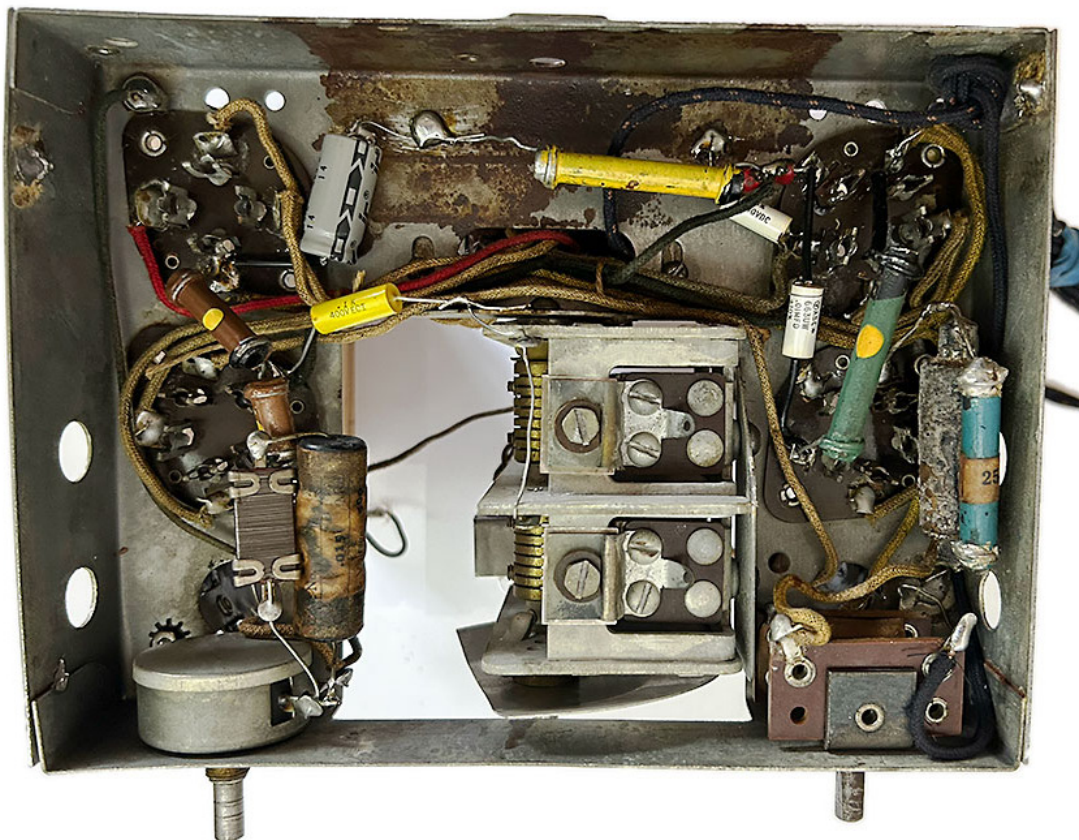


Jackson-Bell Model 84 Eyebrow Peter Pan Chassis Front View



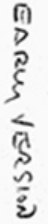


Jackson-Bell Model 84 Eyebrow Peter Pan Chassis Top View



Jackson-Bell Model 84 Eyebrow Peter Pan Chassis Bottom View

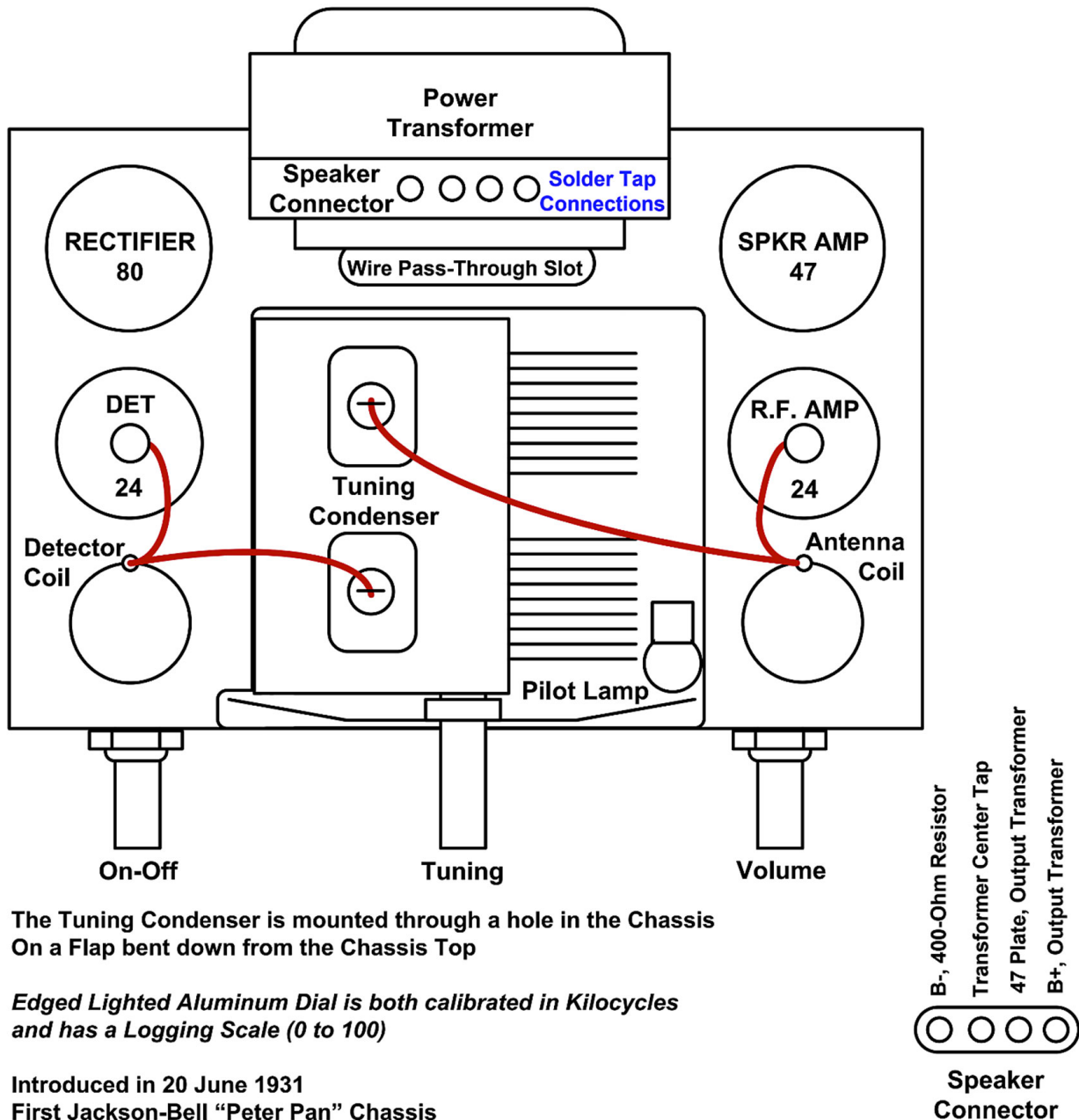
4



4

## JB-84 Chassis Notes

15DEC2022RAG



The Tuning Condenser is mounted through a hole in the Chassis  
On a Flap bent down from the Chassis Top

*Edged Lighted Aluminum Dial is both calibrated in Kilocycles  
and has a Logging Scale (0 to 100)*

Introduced in 20 June 1931  
First Jackson-Bell "Peter Pan" Chassis

Same Chassis in Jackson-Bell Peter Pan Cabinet with "Eyebrow" & Escutcheon  
introduced February 1932

The Flint "Peter Pan" (Kewpie Grille), with a **Solder Tab Connector Strip** for the Speaker  
**We have a Flint Peter Pan Ad, JUNE 1931 in "Western Music & Radio Trade Journal"**  
**With a Photo, indicates May (April) Prototype (Production) from Flint**

**This Chassis also appears in a Domed "Peter Pan" Cabinet, with a Flint "Kewpie" Grille and Metal  
Escutcheon with a Backlighted Translucent Dial  
Stamped in Metal 1132... November 1932... obviously blowing out old parts inventory!**

**We have seen some later Versions of this Chassis with a  
Tone Control Pot.. All assumed to be added aftermarket.**