

Jackson-Bell Model 84 - 1132

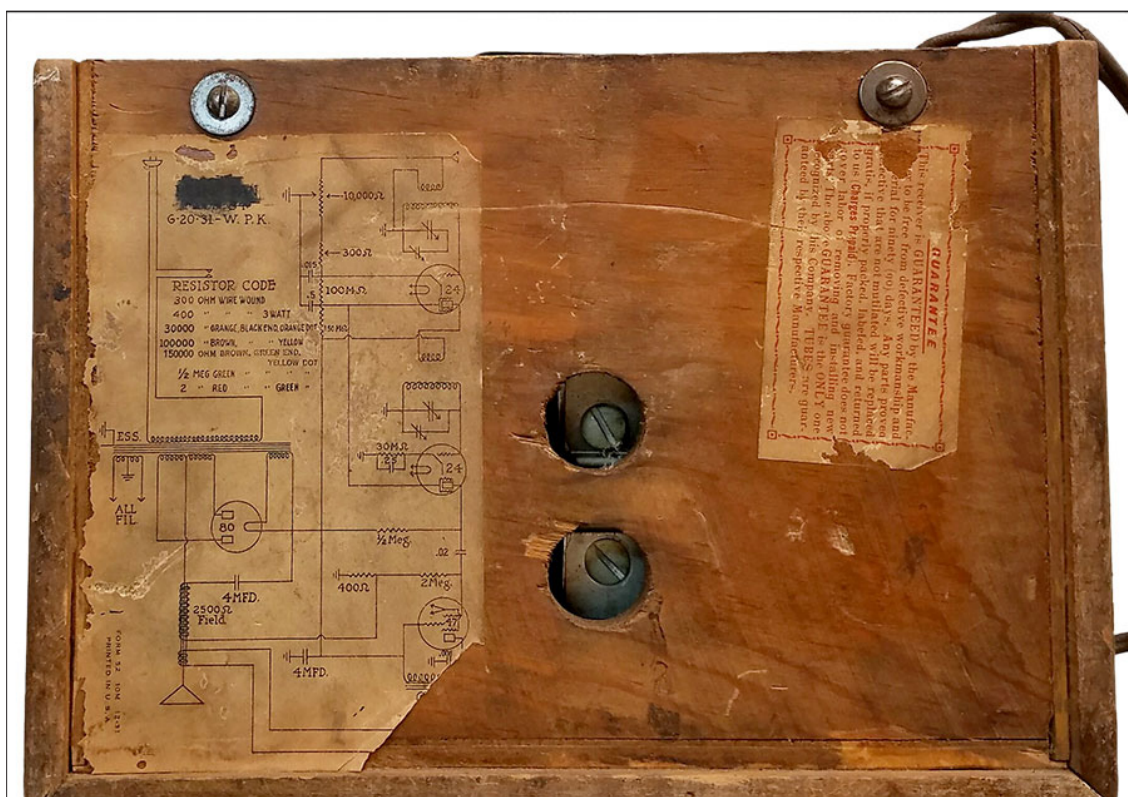
Images are from two examples of this model



Jackson-Bell Model 84 - 1132 Front View



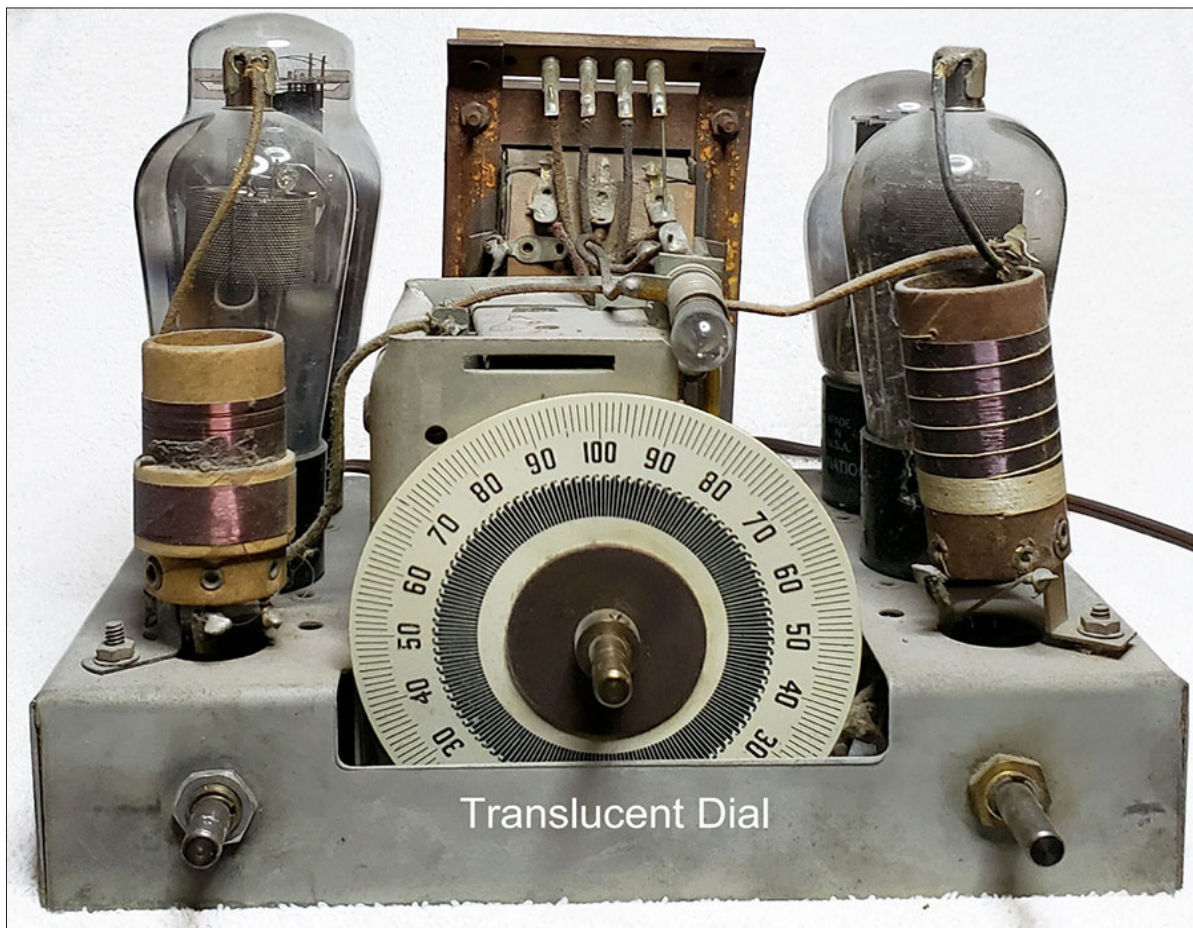
Jackson-Bell Model 84 - 1132 Rear View



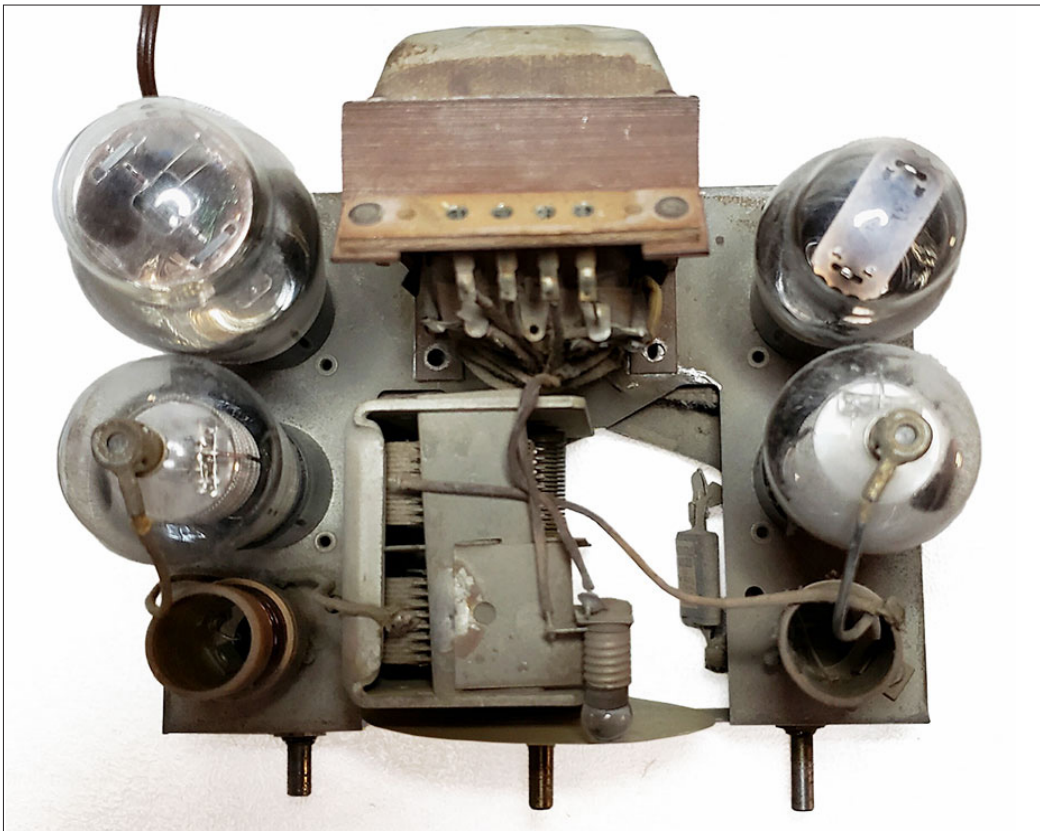
Jackson-Bell Model 84 - 1132 - Cabinet Bottom View



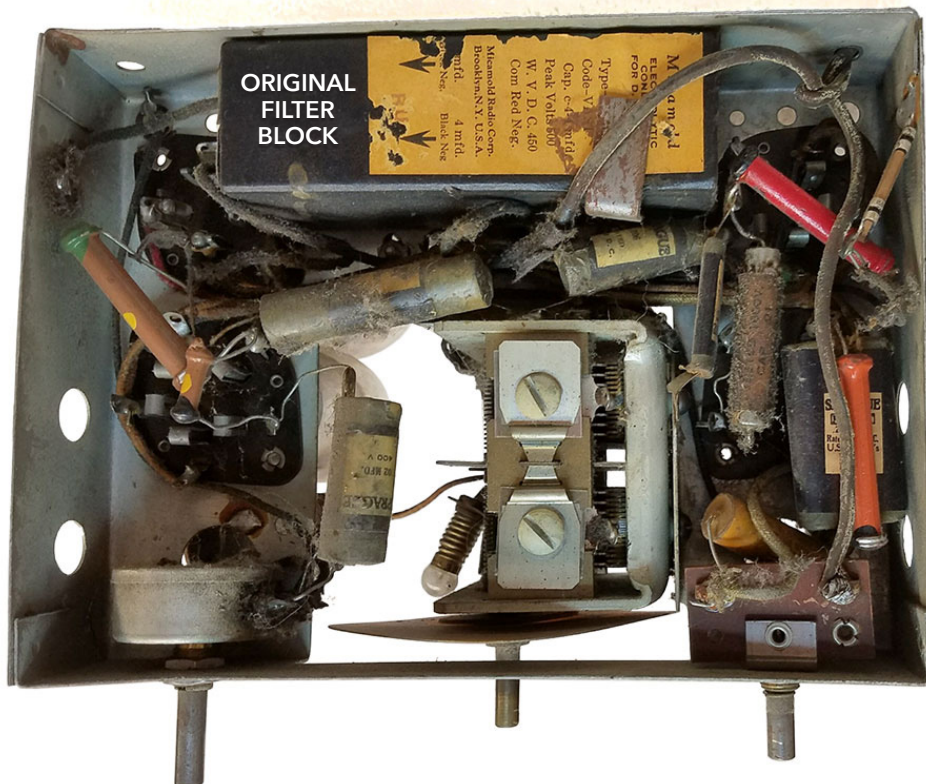
Jackson-Bell Model 84 -1132 Speaker Plug



Jackson-Bell Model 84 -1132 - Chassis Front View

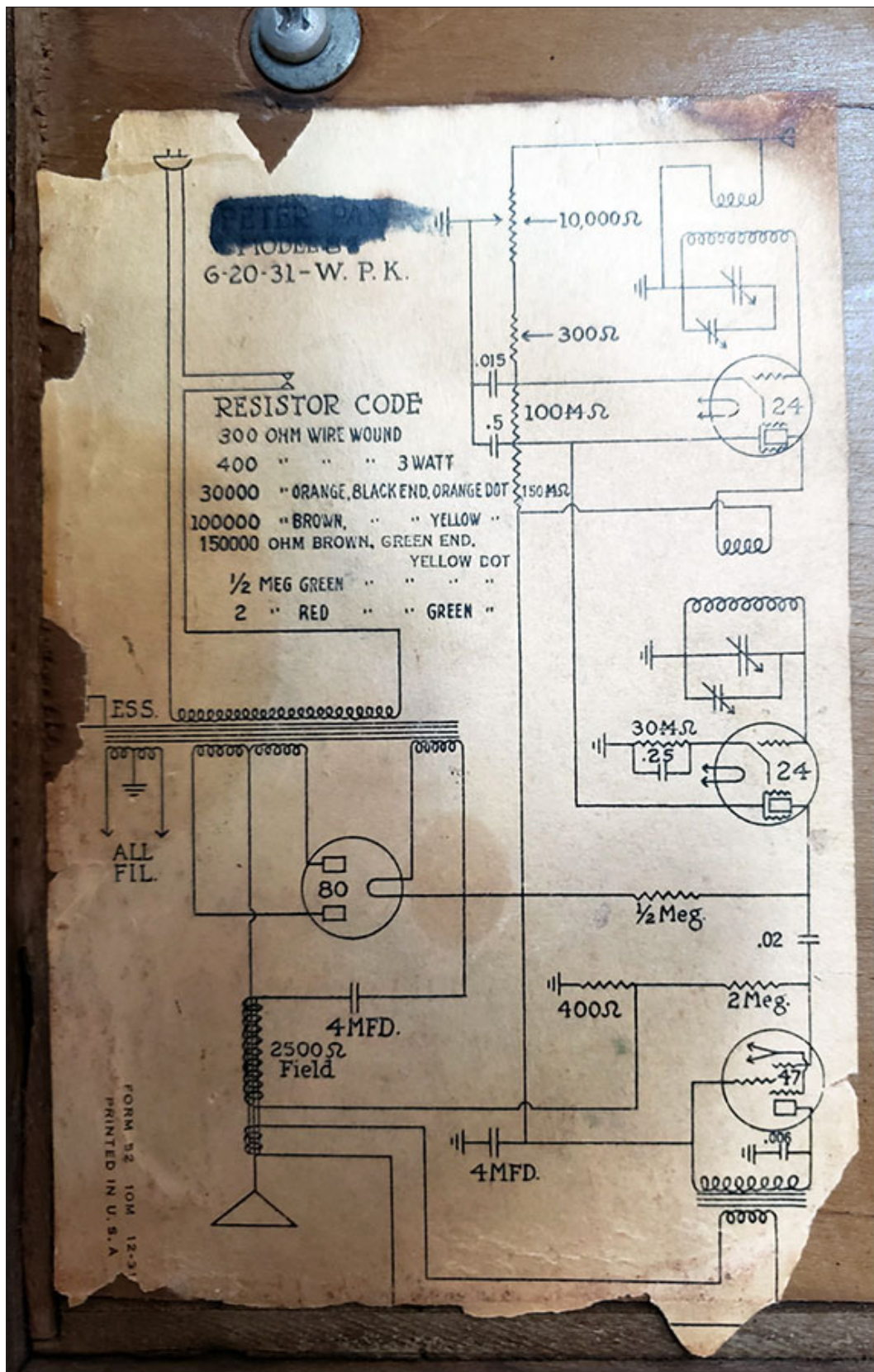


Jackson-Bell Model 84 - 1132 Chassis Top View



Jackson-Bell Model 84 - 1132 Chassis Bottom View

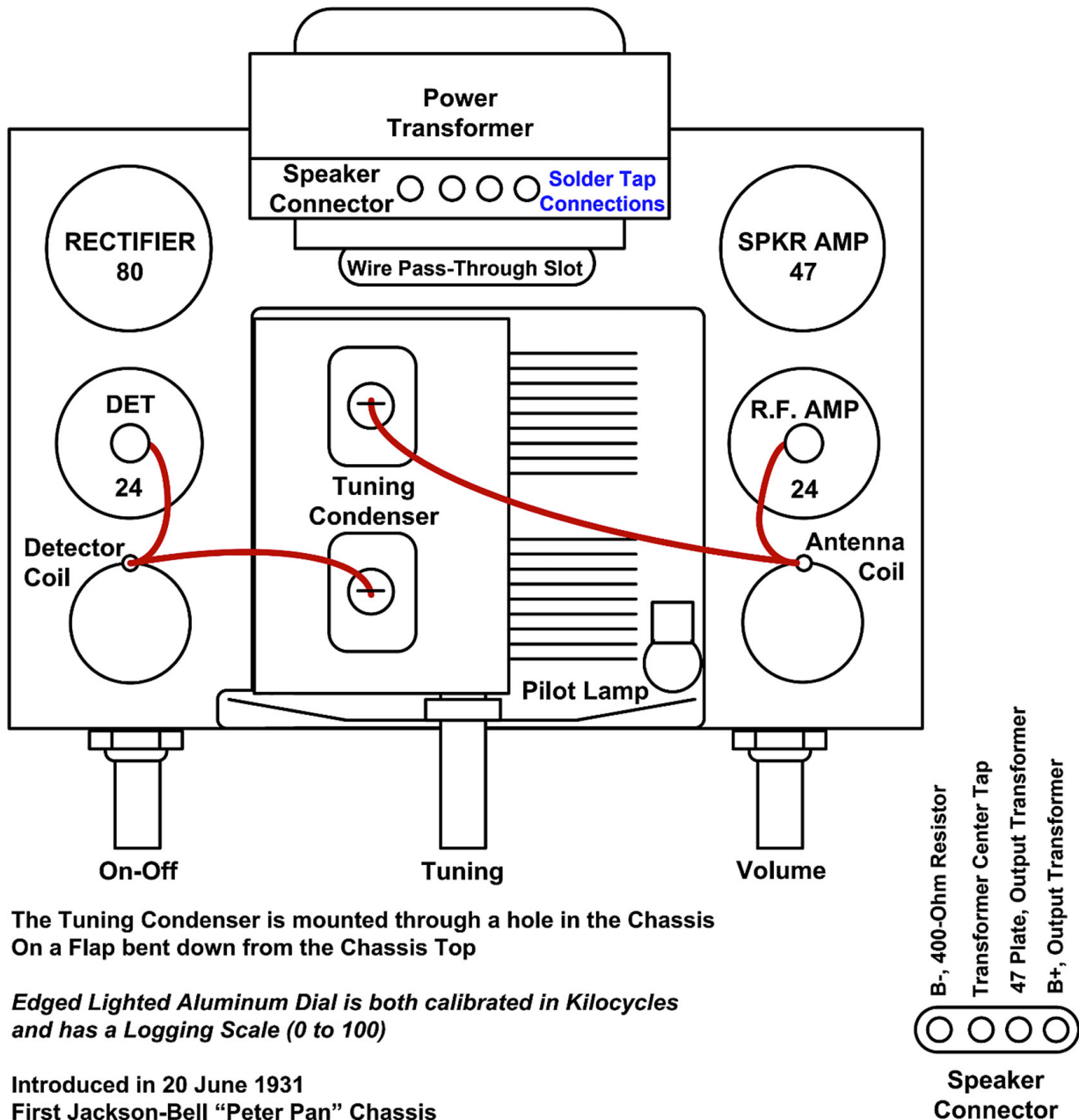
Schematic attached to cabinet base (Peter Pan name blacked out)



Jackson-Bell Model 84 - 1132 Chassis Base Schematic

JB-84 Chassis Notes

15DEC2022RAG



The Tuning Condenser is mounted through a hole in the Chassis
On a Flap bent down from the Chassis Top

*Edged Lighted Aluminum Dial is both calibrated in Kilocycles
and has a Logging Scale (0 to 100)*

Introduced in 20 June 1931
First Jackson-Bell "Peter Pan" Chassis

Same Chassis in Jackson-Bell Peter Pan Cabinet with "Eyebrow" & Escutcheon
introduced February 1932

The Flint "Peter Pan" (Kewpie Grille), with a **Solder Tab Connector Strip** for the Speaker
We have a Flint Peter Pan Ad, JUNE 1931 in "Western Music & Radio Trade Journal"
With a Photo, indicates May (April) Prototype (Production) from Flint

**This Chassis also appears in a Domed "Peter Pan" Cabinet, with a Flint "Kewpie" Grille and Metal
Escutcheon with a Backlighted Translucent Dial
Stamped in Metal 1132... November 1932... obviously blowing out old parts inventory!**

**We have seen some later Versions of this Chassis with a
Tone Control Pot.. All assumed to be added aftermarket.**