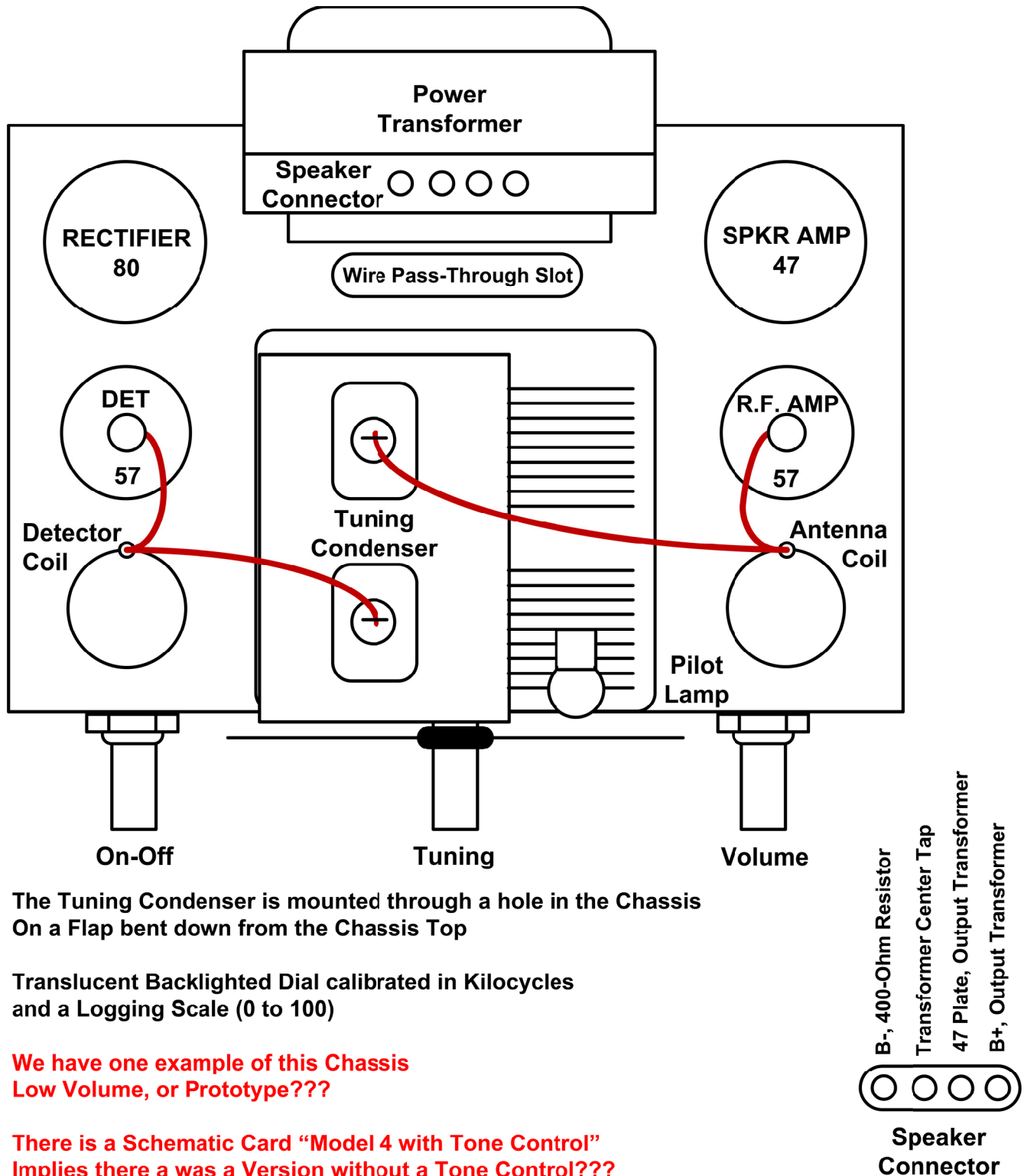
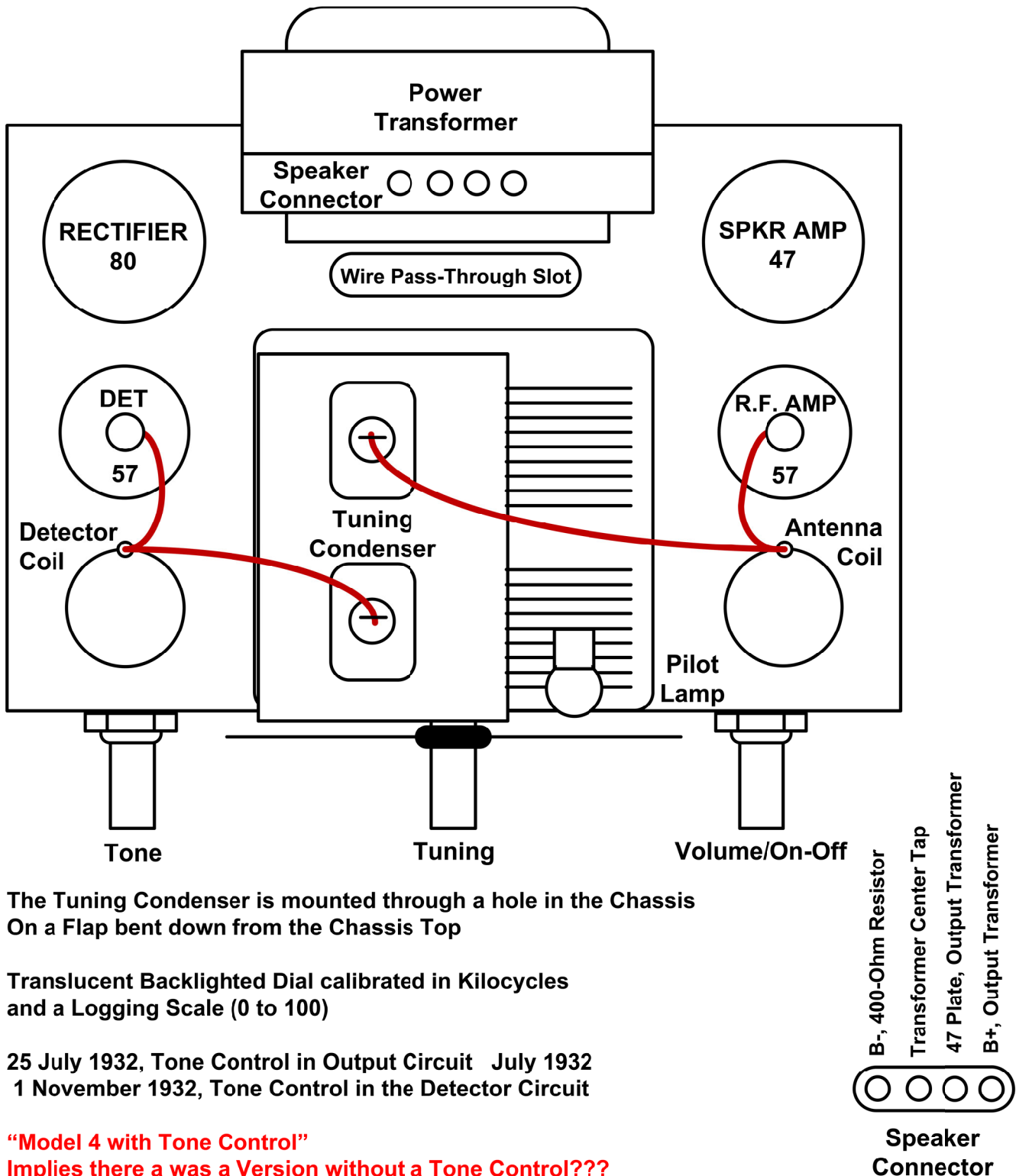


**JB Model “4” Early Version or Prototype**  
(No Tone Control)



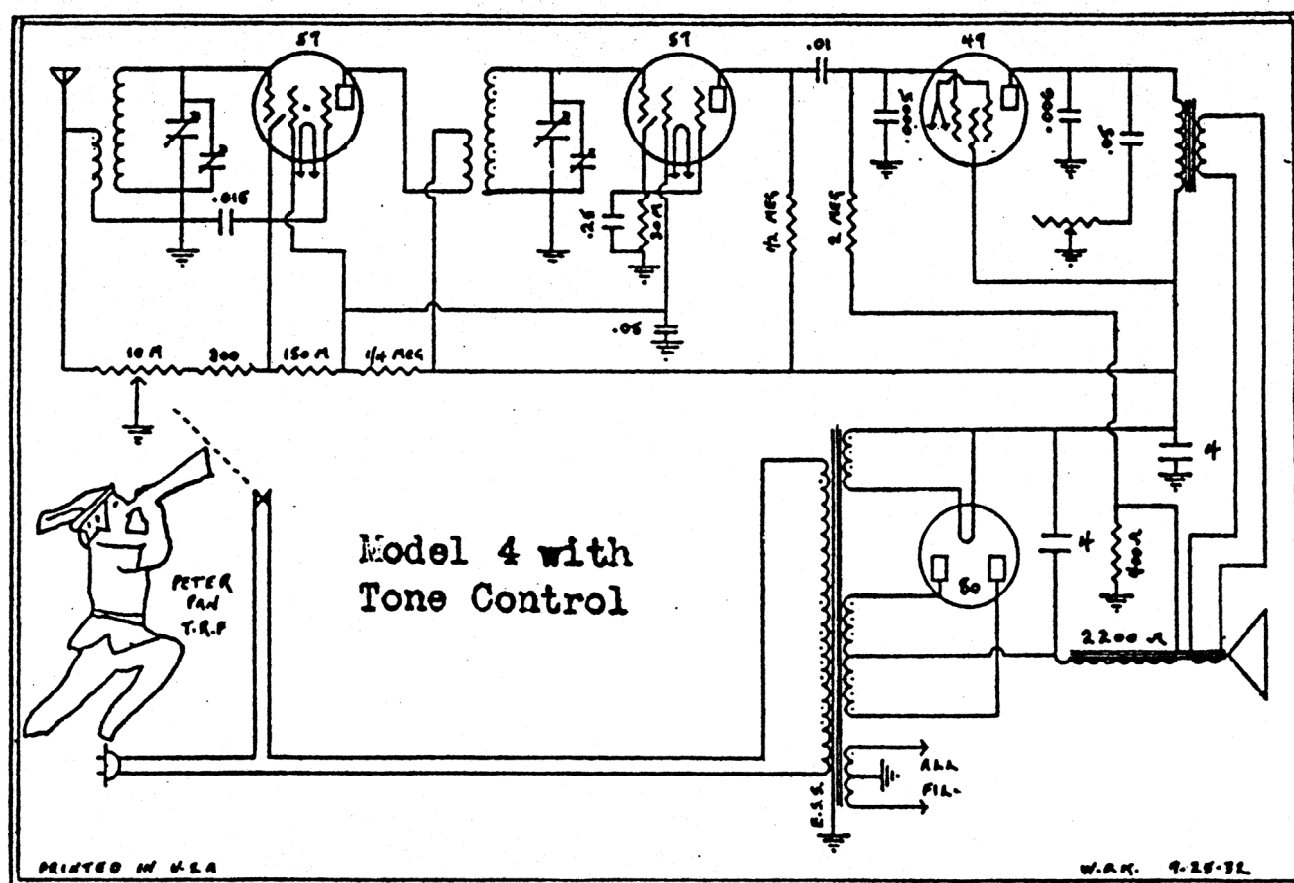
# JB “Model 4 with Tone Control” Later/Production Versions

Image of Peter Pan on the Schematic Diagram Label



PRESUMABLY THERE WAS A MODEL 4 WITHOUT A TONE CONTROL!?

I HAVE THIS CHASSIS SAME AS BELOW WITH ONLY THE .006 UF IN THE  
PLATE OF THE 47 OUTPUT TUBE



## JACKSON-BELL MODEL 4 WITH TONE CONTROL

Early Version 1, 25JUL1932

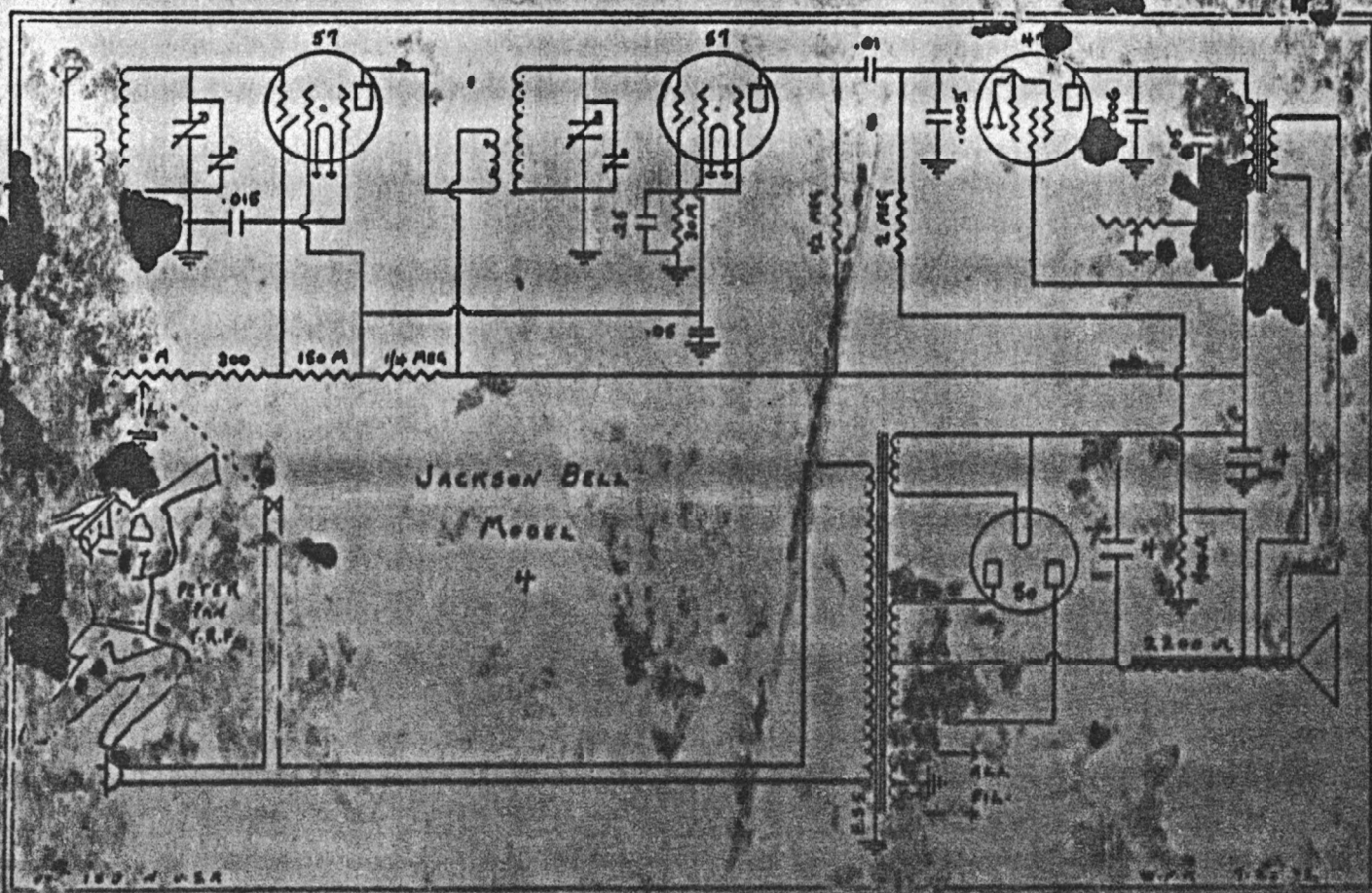
# PETER PAN

# JACKSON BELL MODEL 4

**T. R. F.**  
**PETER PAN**

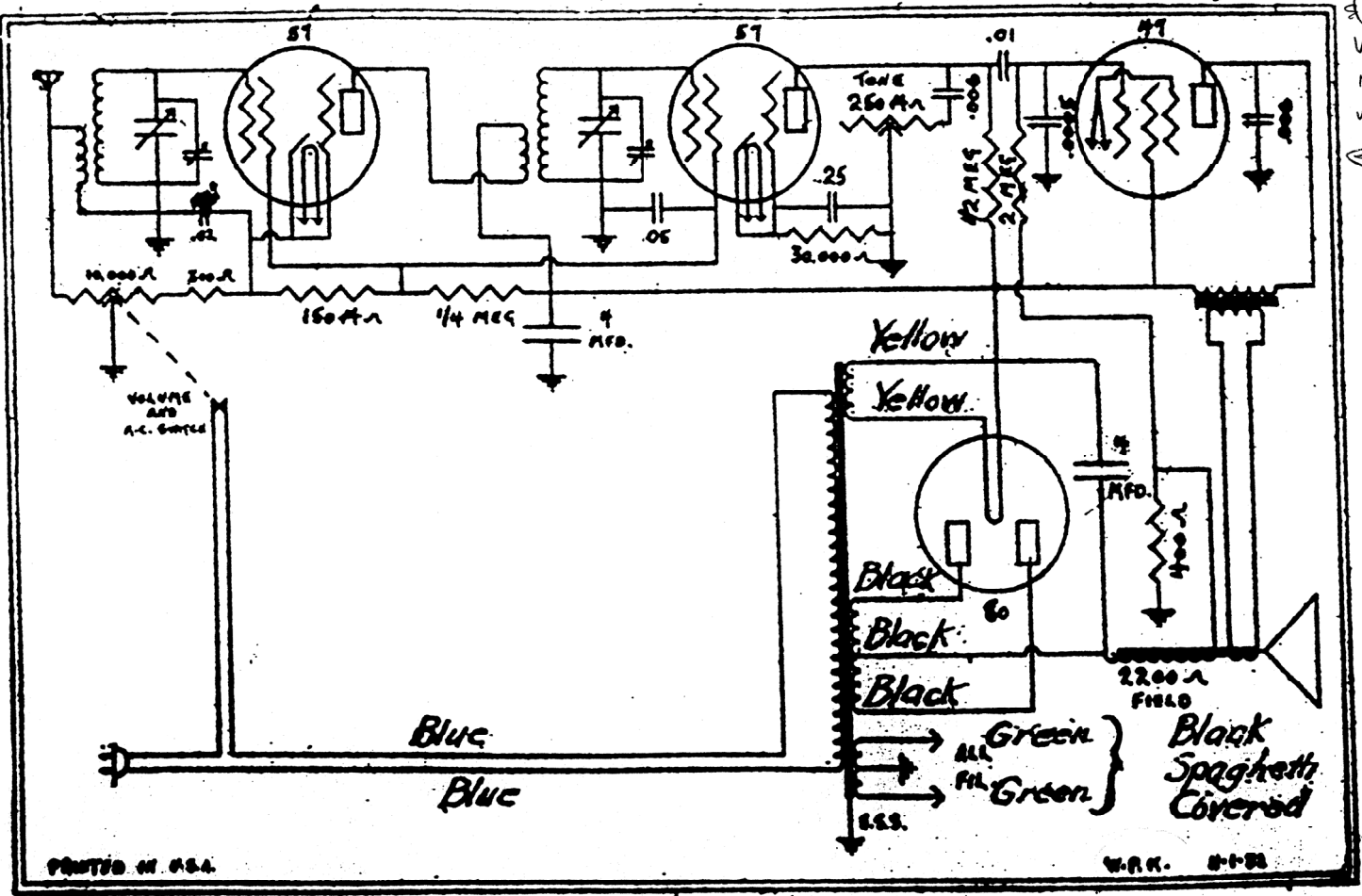


# Schematic on Cabinet Bottom



25 ~~SEP 14~~ 32  
JUL 4

TONE CONTROL MOVED TO DETECTOR  
 ALLOWS A SMALLER (CHEAPER)  
 CAPACITOR TO BE USED... .006 UF  
 & LESS  
 VOLTAGE!  
 NOW SAME  
 VALUE AS  
 ???



JACKSON BELL

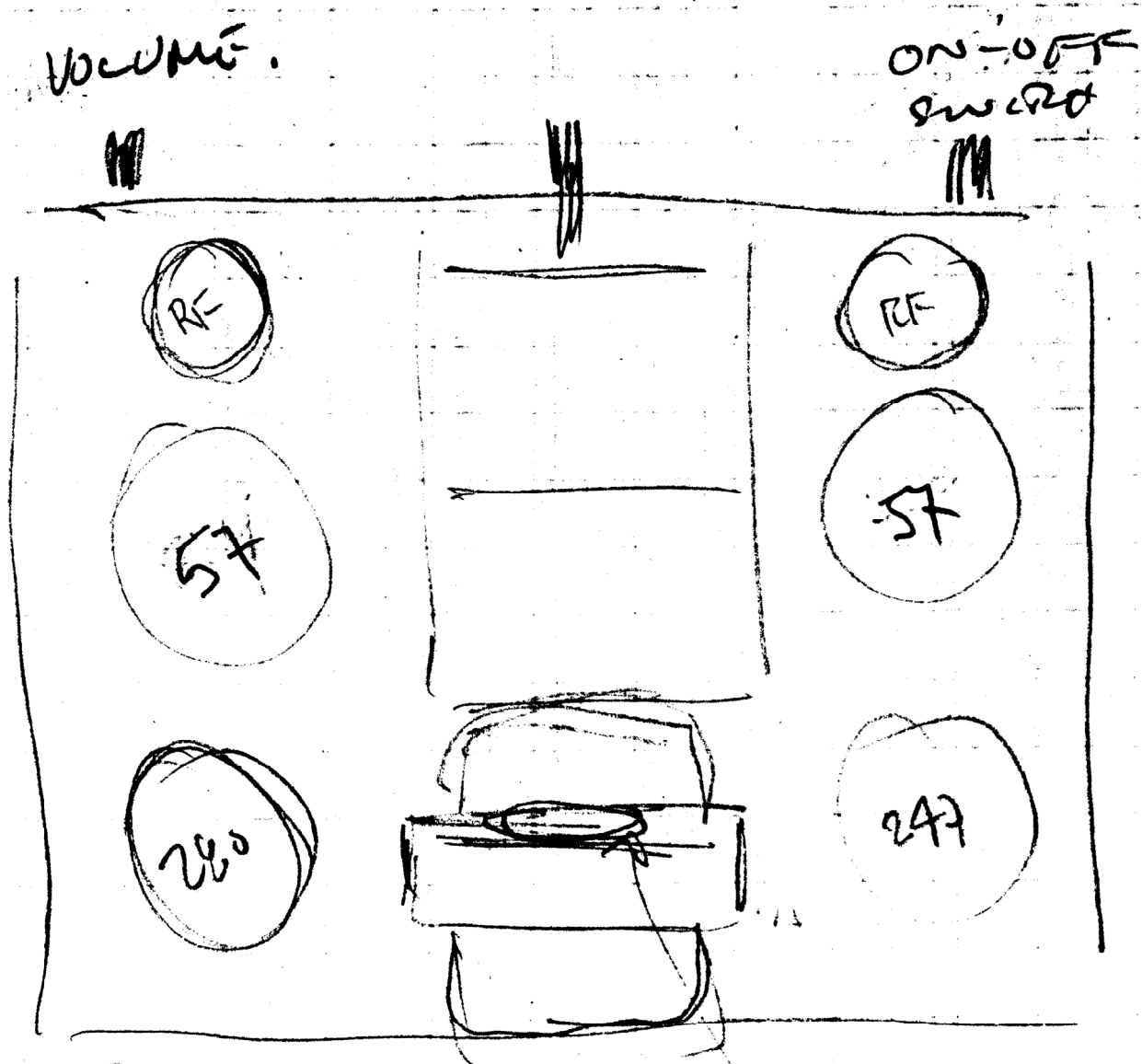
MODEL 4

1 NOV 32

USED A  
 DRAFTING  
 TEMPLATE

VERSION 2





Hand Sketch  
Circa 1993 RAG

JB-14