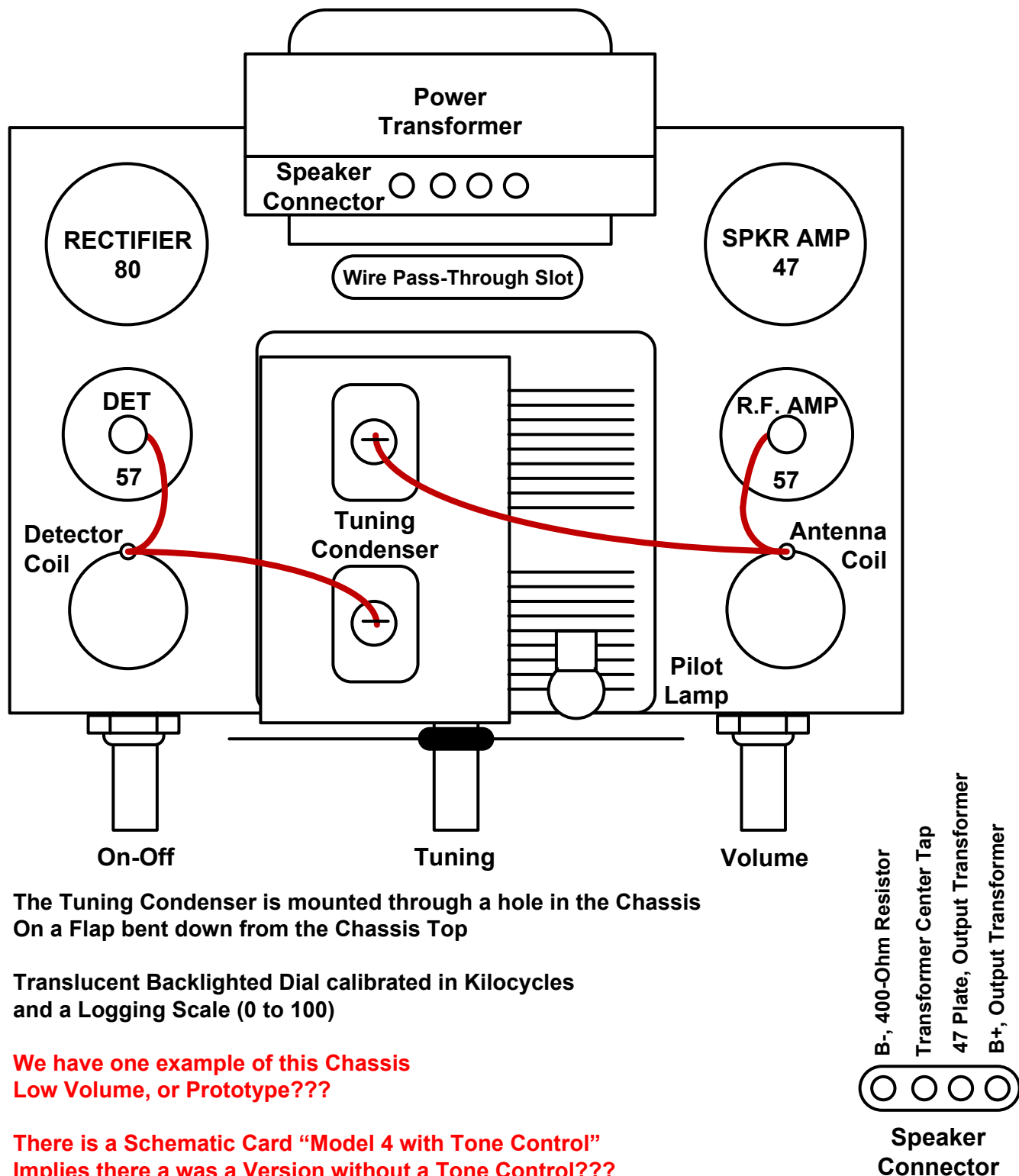


# JB-4 Chassis Notes

2DEC2022RAG

## JB Model "4" Early Version or Prototype (No Tone Control)



The Tuning Condenser is mounted through a hole in the Chassis  
On a Flap bent down from the Chassis Top

Translucent Backlighted Dial calibrated in Kilocycles  
and a Logging Scale (0 to 100)

We have one example of this Chassis  
Low Volume, or Prototype???

There is a Schematic Card "Model 4 with Tone Control"  
Implies there a was a Version without a Tone Control???

We have seen Sets with an (After Market) added Metal Tube Shield on the  
Detector. This reduces the Regeneration at High Gain (Volume) Levels, and  
makes the Set much easier to Tune...

# JB “Model 4 with Tone Control” Later/Production Versions

Image of Peter Pan on the Schematic Diagram Label

