

# CANZAC® | GROUP

Improving the performance of concrete worldwide®

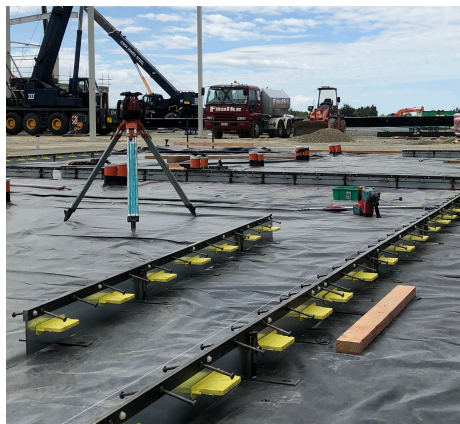


## DOWEL SYSTEMS

### DOMINATOR DOWEL SLEEVE

PROVIDING EXCEPTIONAL LOAD TRANSFER &  
LATERAL MOVEMENT

The Dominator Dowel Sleeve is the most advanced in plate dowel design.



#### KEY FEATURES / BENEFITS

- A constant width steel plate
- High bearing capacity (but no excessive bearing capacity) in narrow joint widths
- High bending capacity for a range of joint widths
- Tapered dowel sleeve to allow increasing lateral movement as the joint width increases

#### PLATE DOWEL SELECTION

Much of the concrete movement will be perpendicular to the line of the joint as the joint opens. However, some relative movement between the bays of concrete on each side of the joint will occur along the line of the joint. It is vital that the dowels allow for this relative movement.

If the dowels do not allow for this movement, then unnecessary stresses will develop in the slab, and these may contribute to cracking. With the range of floor construction techniques available, the selection of the dowels must suit the design of the floor, and adequately allow for slab movement, while still retaining adequate load capacity.

Feel free to contact us for any assistance in dowel selection.



## DOWEL SYSTEMS

### DOMINATOR DOWEL SLEEVE

#### PRODUCT INFORMATION

#### DOMINATOR SLEEVES AND PLATE DOWELS

CODE	SIZE	UNIT
10 030	Lesas Dominator Dowel Sleeve 10mm - Yellow	Each
12 060	Lesas Dominator Dowel Sleeve with 75 x 10mm - Black Plate Dowel	Each
12 065	Lesas Dominator Dowel Sleeve with 75 x 10mm - Galv Plate Dowel	Each

