

CANZAC® | GROUP

Improving the performance of concrete worldwide®



DOWEL SYSTEMS

DOMINATOR DOWEL SLEEVE

PROVIDING EXCEPTIONAL LOAD TRANSFER & LATERAL MOVEMENT

The Dominator Dowel Sleeve is the most advanced in plate dowel design.

PLATE DOWEL SELECTION

Much of the concrete movement will be perpendicular to the line of the joint as the joint opens. However, some relative movement between the bays of concrete on each side of the joint will occur along the line of the joint. It is vital that the dowels allow for this relative movement.

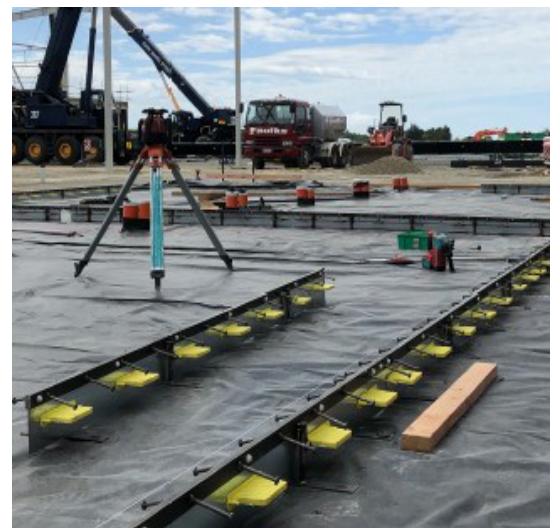
If the dowels do not allow for this movement, then unnecessary stresses will develop in the slab, and these may contribute to cracking. With the range of floor construction techniques available, the selection of the dowels must suit the design of the floor, and adequately allow for slab movement, while still retaining adequate load capacity.

Feel free to contact us for any assistance in dowel selection



KEY FEATURES

- A constant width steel plate
- High bearing capacity (but no excessive bearing capacity) in narrow joint widths
- High bending capacity for a range of joint widths
- Tapered dowel sleeve to allow increasing lateral movement as the joint width increases
- Manufactured in New Zealand



CANZAC®
Under Slab - In Slab - On Slab

LESASYSTEMS
ENGINEERED CONCRETE FLOOR SYSTEMS

MONSTA-SLAB

converge

ROMBUS INDUSTRIES

CANZAC® LTD
Concrete Lifting Systems®

0800 422 692 | www.canzac.com

CANZAC® | GROUP

Improving the performance of concrete worldwide®

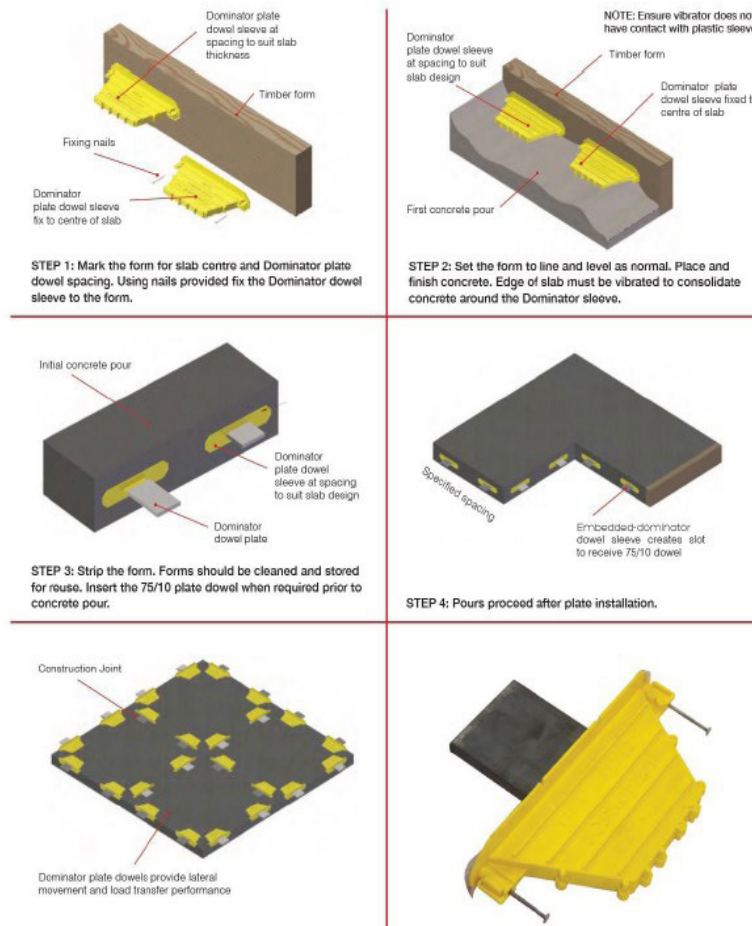


DOWEL SYSTEMS

DOMINATOR DOWEL SLEEVE

PROVIDING EXCEPTIONAL LOAD TRANSFER & LATERAL MOVEMENT

CODE	DESCRIPTION	UNIT
10 030	LESA DOMINATOR DOWEL SLEEVE 10MM YELLOW	EACH
12 060	LESA DOMINATOR DOWEL SLEEVE w 75 x 10mm BLACK PLATE DOWEL	EACH
12 065	LESA DOMINATOR DOWEL SLEEVE w 75 x 10mm GALV PLATE DOWEL	EACH



CANZAC®
Under Slab - In Slab - On Slab

LESA
SYSTEMS
ENGINEERED CONCRETE FLOOR SYSTEMS

MONSTA-SLAB

converge

ROMBUS
INDUSTRIES

CANZAC®
Concrete Lifting Systems®

0800 422 692 | www.canzac.com